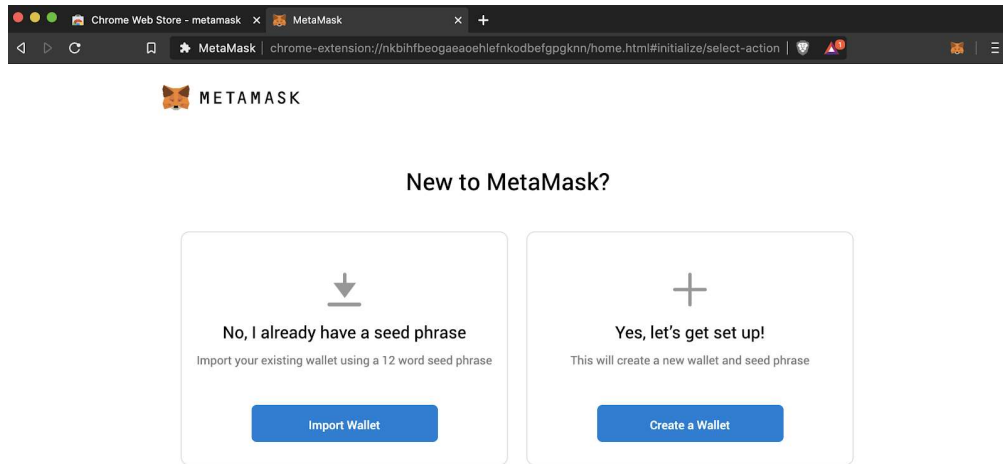


Step 1: Install METAMASK wallet in your Browser.

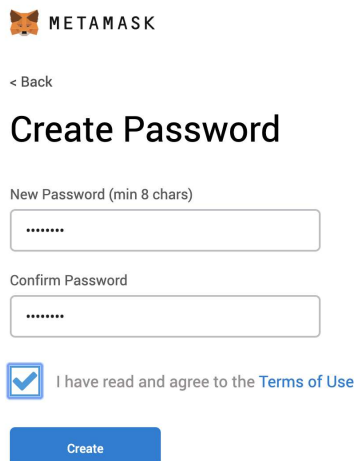
Note: If you want help setting up MetaMask, please use this link: <https://metamask.io/>

Step 2: Create an account in MetaMask.

1. Click on the “Create a wallet” button



2. Create Password of at least 8 characters

A screenshot of the MetaMask 'Create Password' screen. The page title is 'Create Password'. Below the title, there is a '< Back' link. The main content area has two input fields: 'New Password (min 8 chars)' and 'Confirm Password', both containing masked characters. Below the input fields is a checked checkbox with the text 'I have read and agree to the Terms of Use'. At the bottom of the form is a blue button labeled 'Create'.

Next: Click on “Create” and then write down your backup phrase



Secret Backup Phrase

Your secret backup phrase makes it easy to back up and restore your account.

WARNING: Never disclose your backup phrase. Anyone with this phrase can take your Ether forever.



Tips:

Store this phrase in a password manager like 1Password.

Write this phrase on a piece of paper and store in a secure location. If you want even more security, write it down on multiple pieces of paper and store each in 2 - 3 different locations.

Memorize this phrase.

[Download this Secret Backup Phrase and keep it stored safely on an external encrypted hard drive or storage medium.](#)



Select each phrase in order to make sure it is correct then click "Confirm".



< Back

Confirm your Secret Backup Phrase

Please select each phrase in order to make sure it is correct.

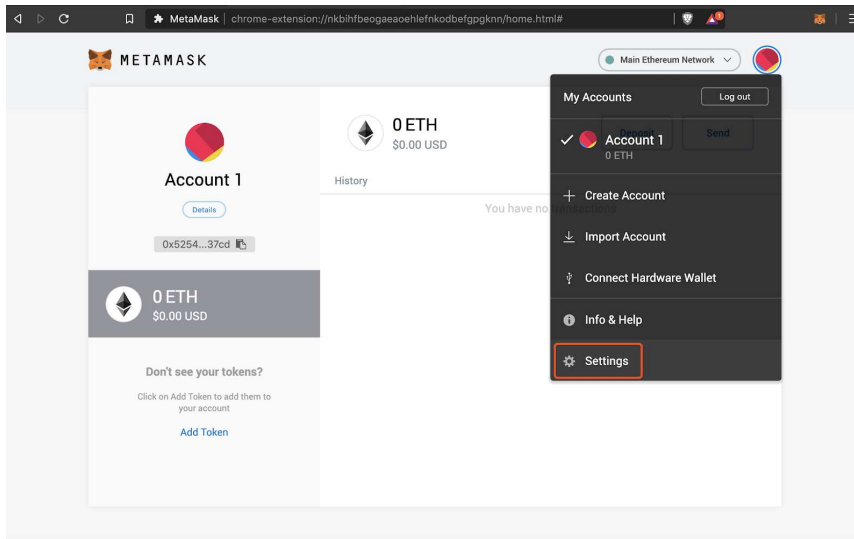


Congratulations! you have created your MetaMask account!

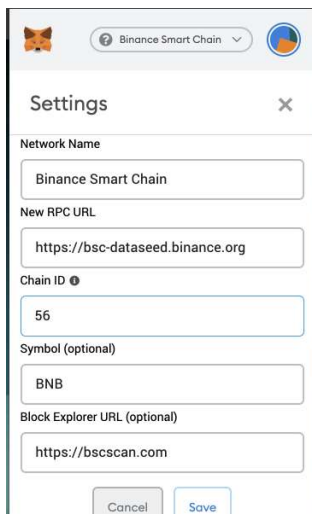
(Next we will connect your MetaMask account to BINANCE SMART CHAIN)

Connect Your MetaMask With Binance Smart Chain

Step 1: Go to setting page > Scroll down to the section that reads “NETWORKS” > Click on it.



Step 2: Click on “Add network” button to add a new network. You will come to the following screen:



Enter the following information carefully:

- **Network Name:** Binance Smart Chain
- **New RPC URL:** <https://bsc-dataseed.binance.org/>
(note: please check once if the above URL is present in the recommended section here: <https://bit.ly/3brn7PQ>)
- **Chain ID:** 56
(note: if 56 does not work, try entering 0x38)
- **Symbol:** BNB

- Block Explorer: <https://bscscan.com/>

Click **SAVE**

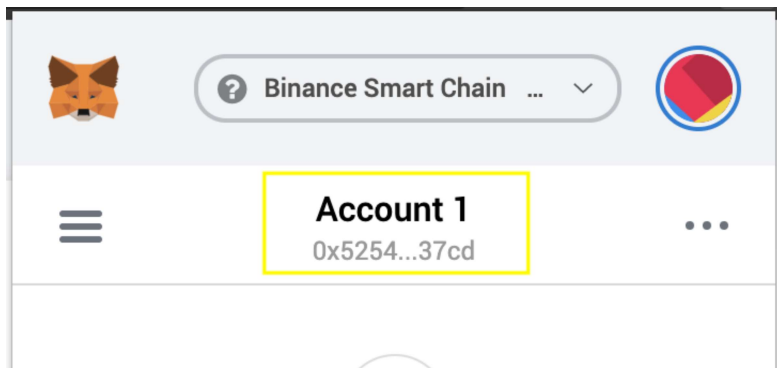
Great! So you have now setup your BINANCE SMART CHAIN (BSC) account in MetaMask. Next let's generate the wallet address to deposit your custom made tokens.

Step 1: Open your MetaMask

Make sure the Binance account you just added is selected on the top drop down. If not select the Binance Smart Chain account you just added.

Step 2:

Tap on your wallet address and it will automatically be copied to your clipboard. This is present right on top of your wallet, below your account name (starts with 0x)



Step 3: Send us this address. This is the address to which we will be sending your tokens to.

Thank you.