

OMEGA Generalized Water Coverage



Source: Ohio EPA, Community Water Systems coverage area data and/or line area data. Created by Ohio University Voinovich School June, 2022

OMEGA WITH PUBLIC WATER ACCESS

OMEGA_With_Water
Area: 859.7 square miles

Source: Generalized drinking water coverage data overlay with U.S. Census Bureau, Census 2010 Summary File 1. Esri forecasts for 2021 and 2026. All survey-based estimates are subject to sampling error. The calculated population displayed with Census data measures the variability of the estimates.

POPULATION



332,356

Total Population



43.5

Median Age

INCOME



18%

Households Receiving Food Stamps/SNAP



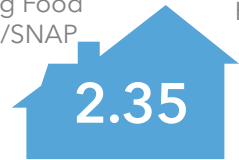
\$48,739

Median Household Income



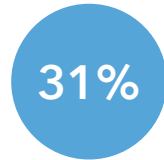
16%

Households Below the Poverty Level



2.35

Average Household Size



31%

Households with 1+ Persons with a Disability

EMPLOYMENT



56%

White Collar



31%

Blue Collar



Services



5.3%

Unemployment Rate

EDUCATION



11%

No High School Diploma



42%

High School Graduate



29%

Some College



17%

Bachelor's/ Grad/Prof Degree

MISCELLANEOUS FACTS



88%

Have Internet Access at Home



\$446

Average Household Cost of Water & Sewer Maintenance (per year)



32%

Pop 35-64: One Type of Health Insurance



\$155,010

Median Home Value



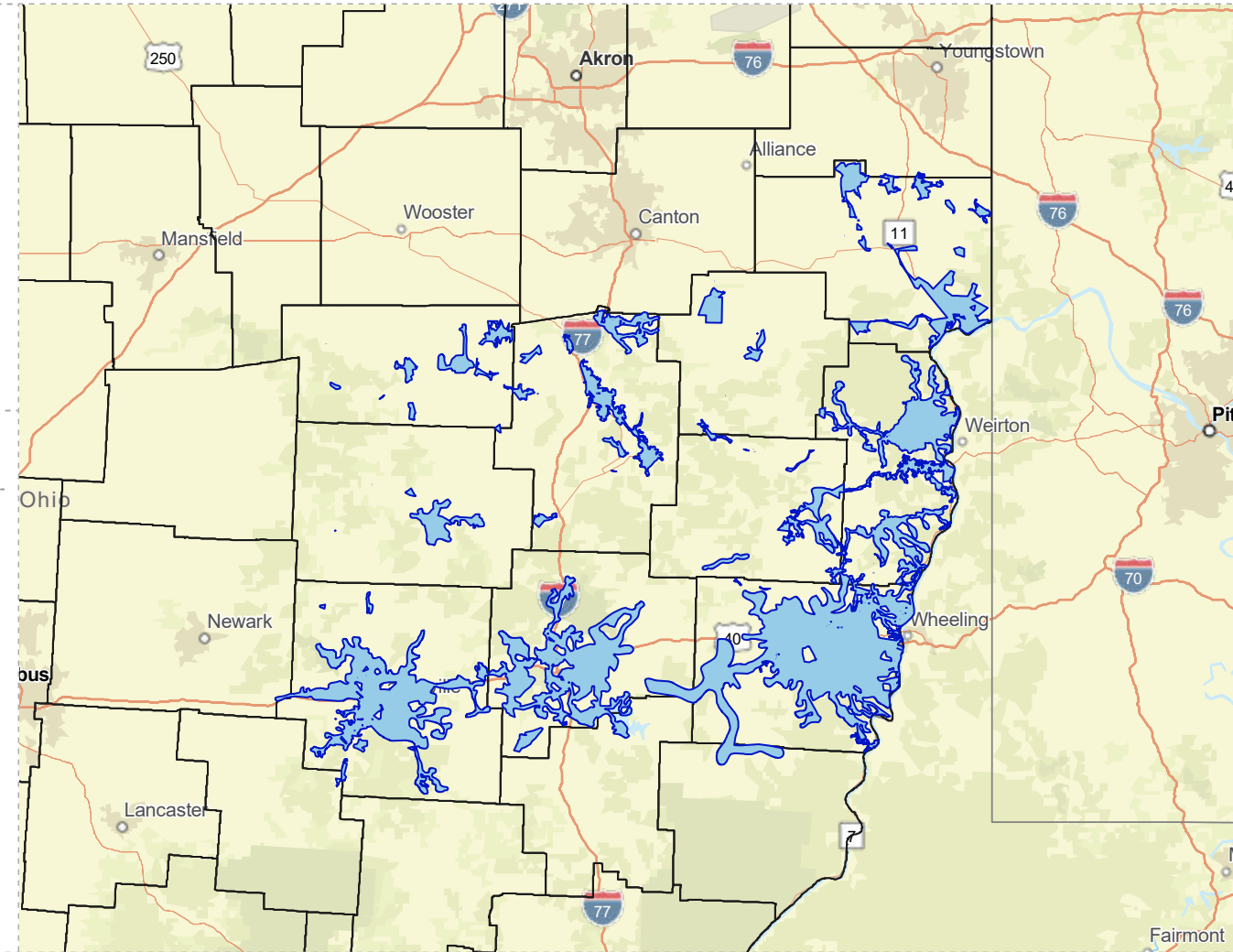
87%

Household Owns or Leases Any Vehicle



22%

Household Spent \$1-\$99 in Average Week at Food Stores



OMEGA WITHOUT PUBLIC WATER ACCESS

OMEGA_Without_Water

Area: 4,219.17 square miles

Source: Generalized drinking water coverage data overlay with U.S. Census Bureau, Census 2010 Summary File 1. Esri forecasts for 2021 and 2026. All survey-based estimates are subject to sampling error. The calculated population displayed with Census data measures the variability of the estimates.

POPULATION



249,104

Total Population



42.5

Median Age

INCOME



10%

Households Receiving Food Stamps/SNAP



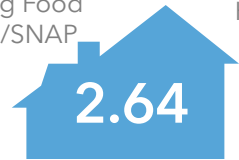
\$56,082

Median Household Income



11%

Households Below the Poverty Level



2.64

Average Household Size



29%

Households with 1+ Persons with a Disability

EMPLOYMENT



51%

White Collar



40%

Blue Collar



Services



3.6%

Unemployment Rate

EDUCATION



16%

No High School Diploma



44%

High School Graduate



25%

Some College



15%

Bachelor's/ Grad/Prof Degree

MISCELLANEOUS FACTS



88%

Have Internet Access at Home



\$514

Average Household Cost of Water & Sewer Maintenance (per year)



32%

Pop 35-64: One Type of Health Insurance



\$192,083

Median Home Value



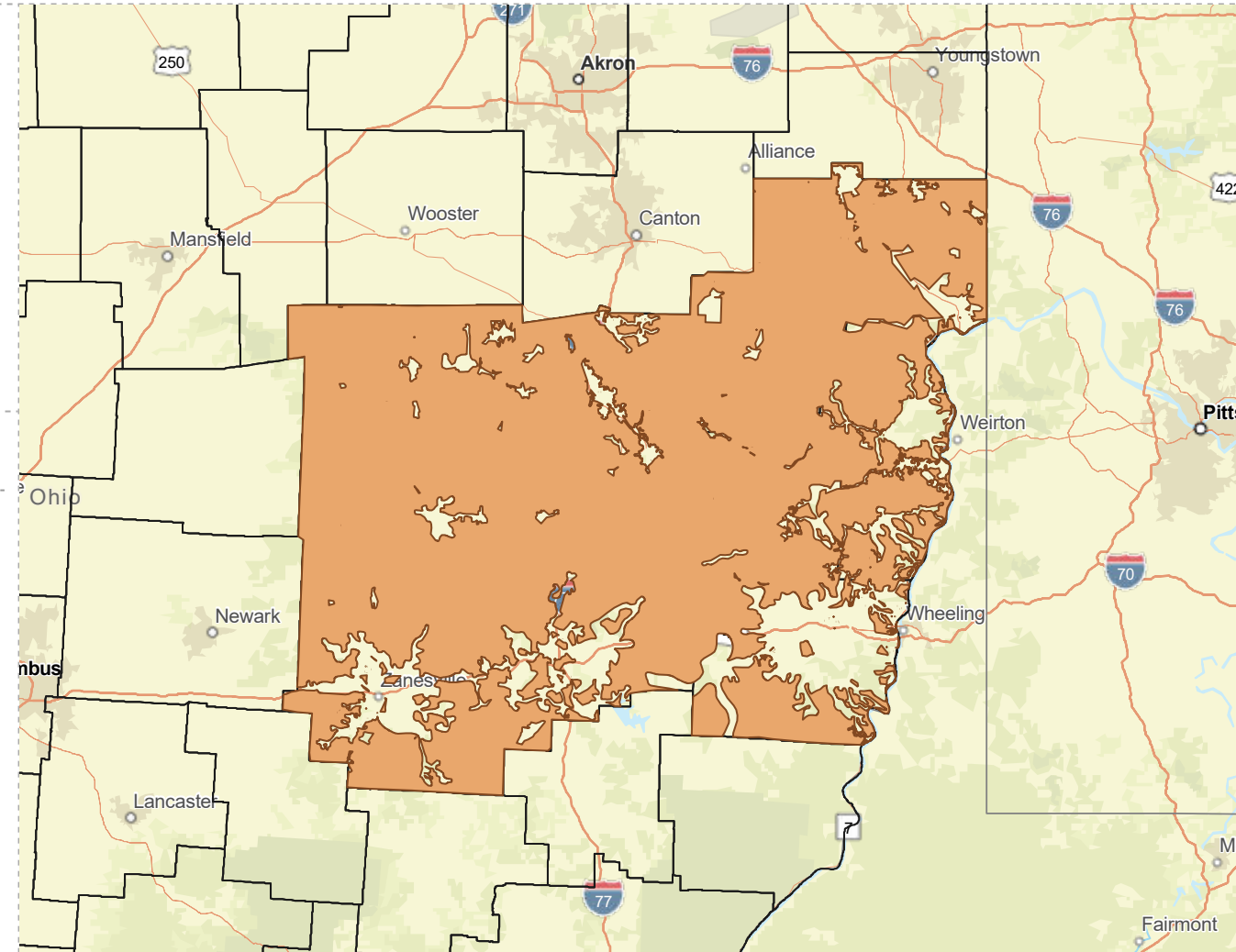
91%

Household Owns or Leases Any Vehicle



22%

Household Spent \$1-\$99 in Average Week at Food Stores



BELMONT COUNTY WITH PUBLIC WATER ACCESS

Belmont_Co_With_Water_Merge

Area: 271.98 square miles



Voinovich School of Leadership and Public Service

Source: Generalized drinking water coverage data overlay with U.S. Census Bureau, Census 2010 Summary File 1. Esri forecasts for 2021 and 2026. All survey-based estimates are subject to sampling error. The calculated population displayed with Census data measures the variability of the estimates.

POPULATION



54,692

Total Population



Median Age

INCOME



12%

Households Receiving Food Stamps/SNAP



\$50,326

Median Household Income

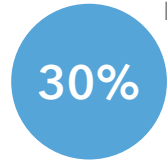


12%

Households Below the Poverty Level



Average Household Size



Households with 1+ Persons with a Disability

EDUCATION



No High School Diploma



41%

High School Graduate



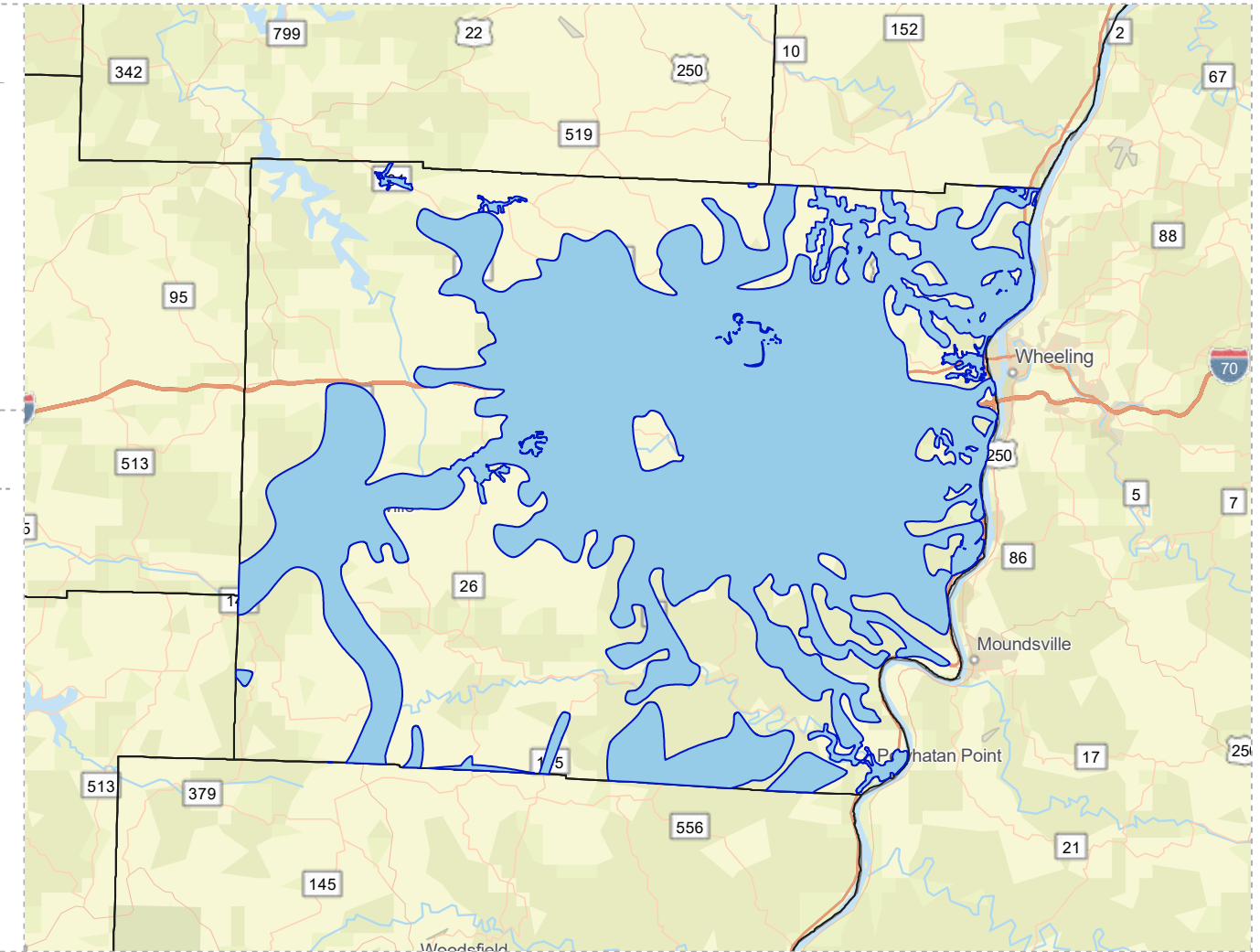
31%

Some College



19%

Bachelor's/ Grad/Prof Degree



EMPLOYMENT



56%

White Collar



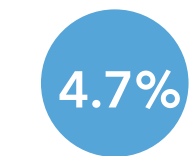
30%

Blue Collar



Services

14%



Unemployment Rate

MISCELLANEOUS FACTS



89%

Have Internet Access at Home



\$507

Average Household Cost of Water & Sewer Maintenance (per year)



35%

Pop 35-64: One Type of Health Insurance



\$192,285

Median Home Value



89%

Household Owns or Leases Any Vehicle



21%

Household Spent \$1-\$99 in Average Week at Food Stores

BELMONT COUNTY WITHOUT PUBLIC WATER ACCESS

Belmont_Co_Without_Water

Area: 269.3 square miles



Voinovich School of Leadership and Public Service

Source: Generalized drinking water coverage data overlay with U.S. Census Bureau, Census 2010 Summary File 1. Esri forecasts for 2021 and 2026. All survey-based estimates are subject to sampling error. The calculated population displayed with Census data measures the variability of the estimates.

POPULATION



12,442

Total Population



46.9

Median Age

INCOME



13%

Households Receiving Food Stamps/SNAP



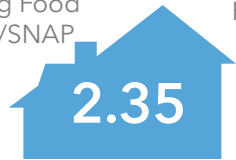
\$48,094

Median Household Income



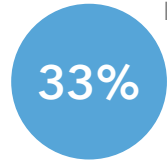
13%

Households Below the Poverty Level



2.35

Average Household Size



33%

Households with 1+ Persons with a Disability

EMPLOYMENT



53%

White Collar



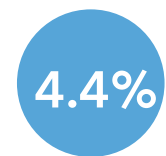
33%

Blue Collar



14%

Services



4.4%

Unemployment Rate

EDUCATION



10%

No High School Diploma



45%

High School Graduate



31%

Some College



14%

Bachelor's/ Grad/Prof Degree

MISCELLANEOUS FACTS



87%

Have Internet Access at Home



\$519

Average Household Cost of Water & Sewer Maintenance (per year)



36%

Pop 35-64: One Type of Health Insurance



\$186,364

Median Home Value



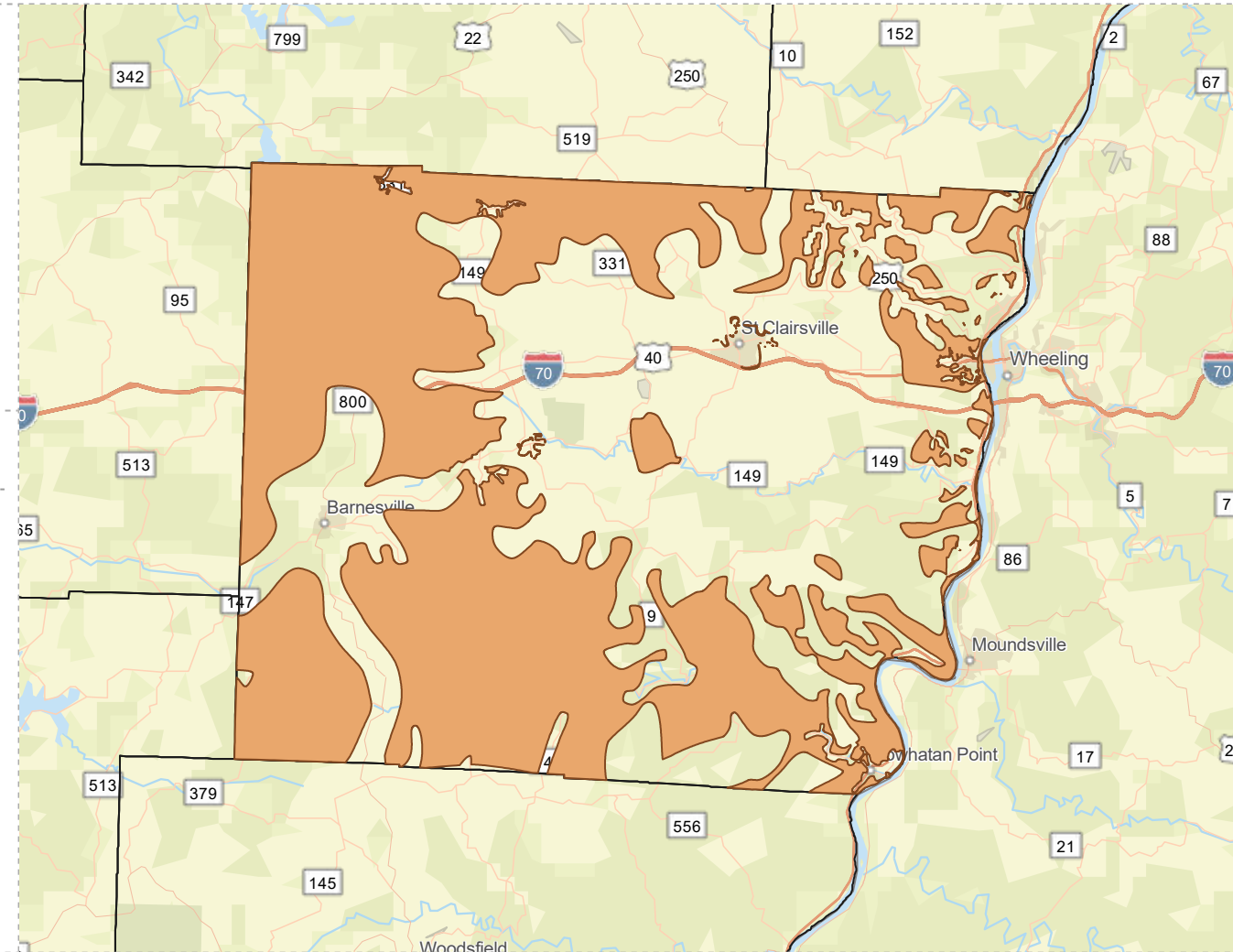
89%

Household Owns or Leases Any Vehicle



22%

Household Spent \$1-\$99 in Average Week at Food Stores



CARROLL COUNTY WITH PUBLIC WATER ACCESS

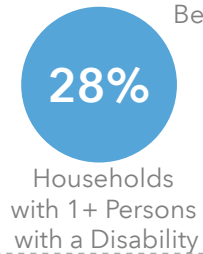
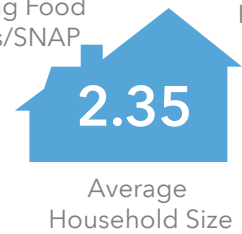
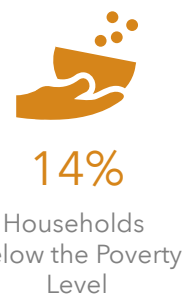
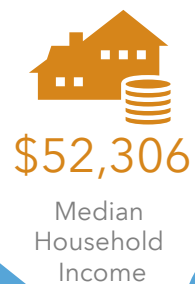
Carroll_Co_With_Water
Area: 14.74 square miles

Source: Generalized drinking water coverage data overlay with U.S. Census Bureau, Census 2010 Summary File 1. Esri forecasts for 2021 and 2026. All survey-based estimates are subject to sampling error. The calculated population displayed with Census data measures the variability of the estimates.

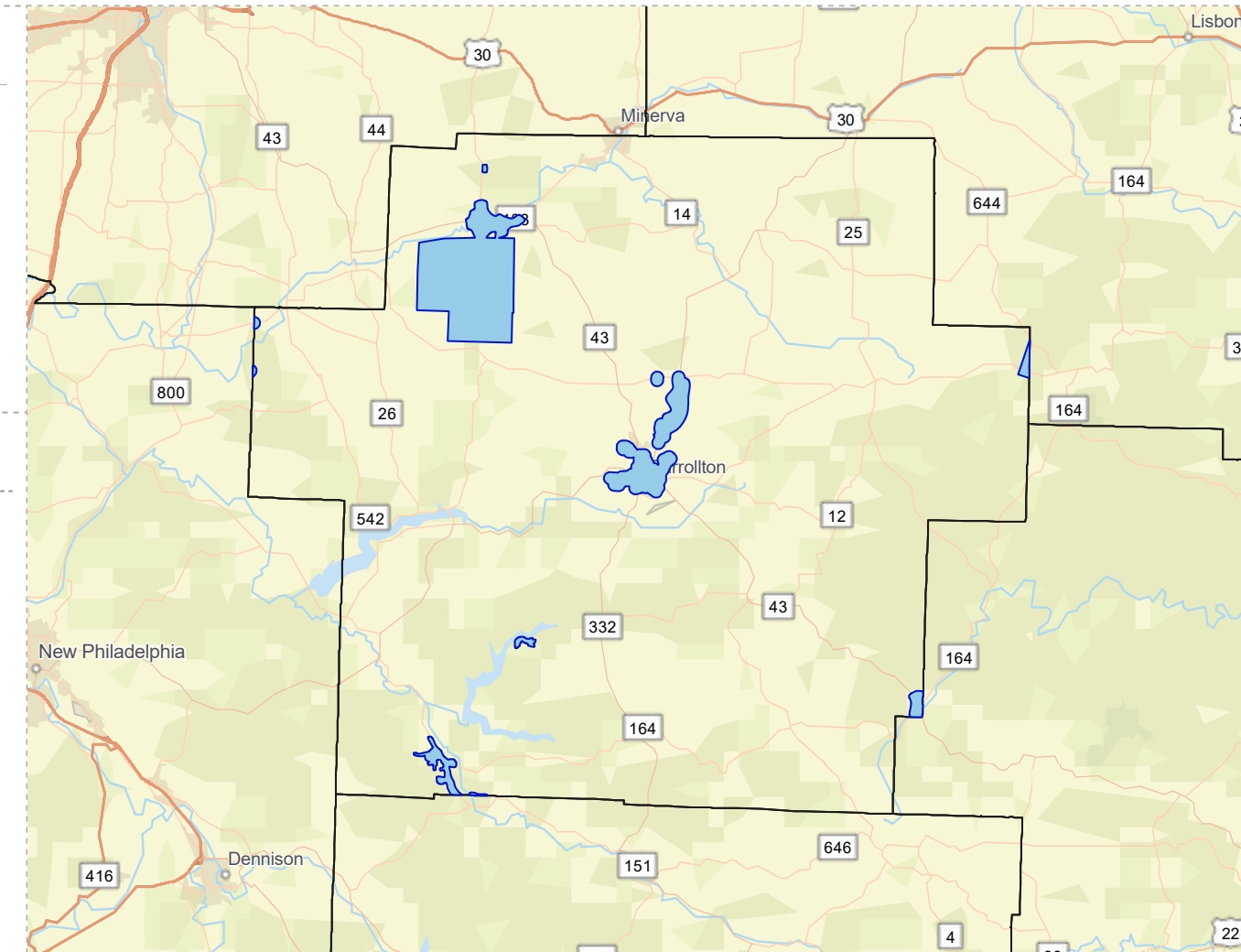
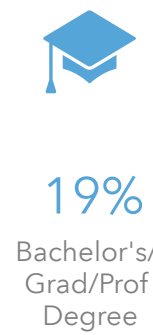
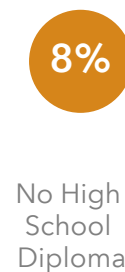
POPULATION



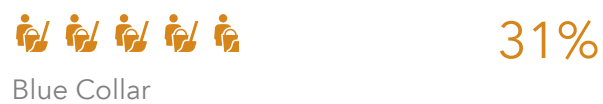
INCOME



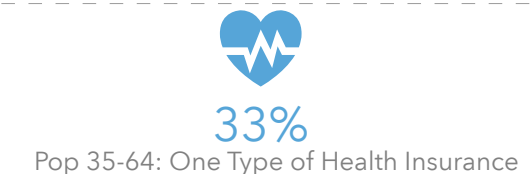
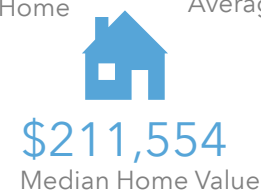
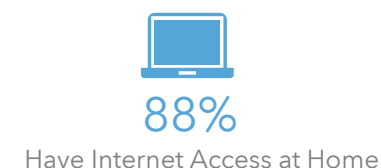
EDUCATION



EMPLOYMENT



MISCELLANEOUS FACTS



CARROLL COUNTY WITHOUT PUBLIC WATER ACCESS

Carroll_Co_Without_Water

Area: 384.19 square miles



Voinovich School of Leadership and Public Service

Source: Generalized drinking water coverage data overlay with U.S. Census Bureau, Census 2010 Summary File 1. Esri forecasts for 2021 and 2026. All survey-based estimates are subject to sampling error. The calculated population displayed with Census data measures the variability of the estimates.

POPULATION



21,164

Total Population



45.3

Median Age

INCOME



9%

Households Receiving Food Stamps/SNAP



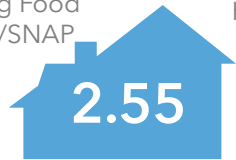
\$54,642

Median Household Income



11%

Households Below the Poverty Level



2.55

Average Household Size



29%

Households with 1+ Persons with a Disability

EMPLOYMENT



50%

White Collar



38%

Blue Collar



Services

12%



3.0%
Unemployment Rate

EDUCATION



11%

No High School Diploma



51%

High School Graduate



25%

Some College



13%

Bachelor's/ Grad/Prof Degree

MISCELLANEOUS FACTS



87%

Have Internet Access at Home



\$509

Average Household Cost of Water & Sewer Maintenance (per year)



34%

Pop 35-64: One Type of Health Insurance



\$207,789

Median Home Value



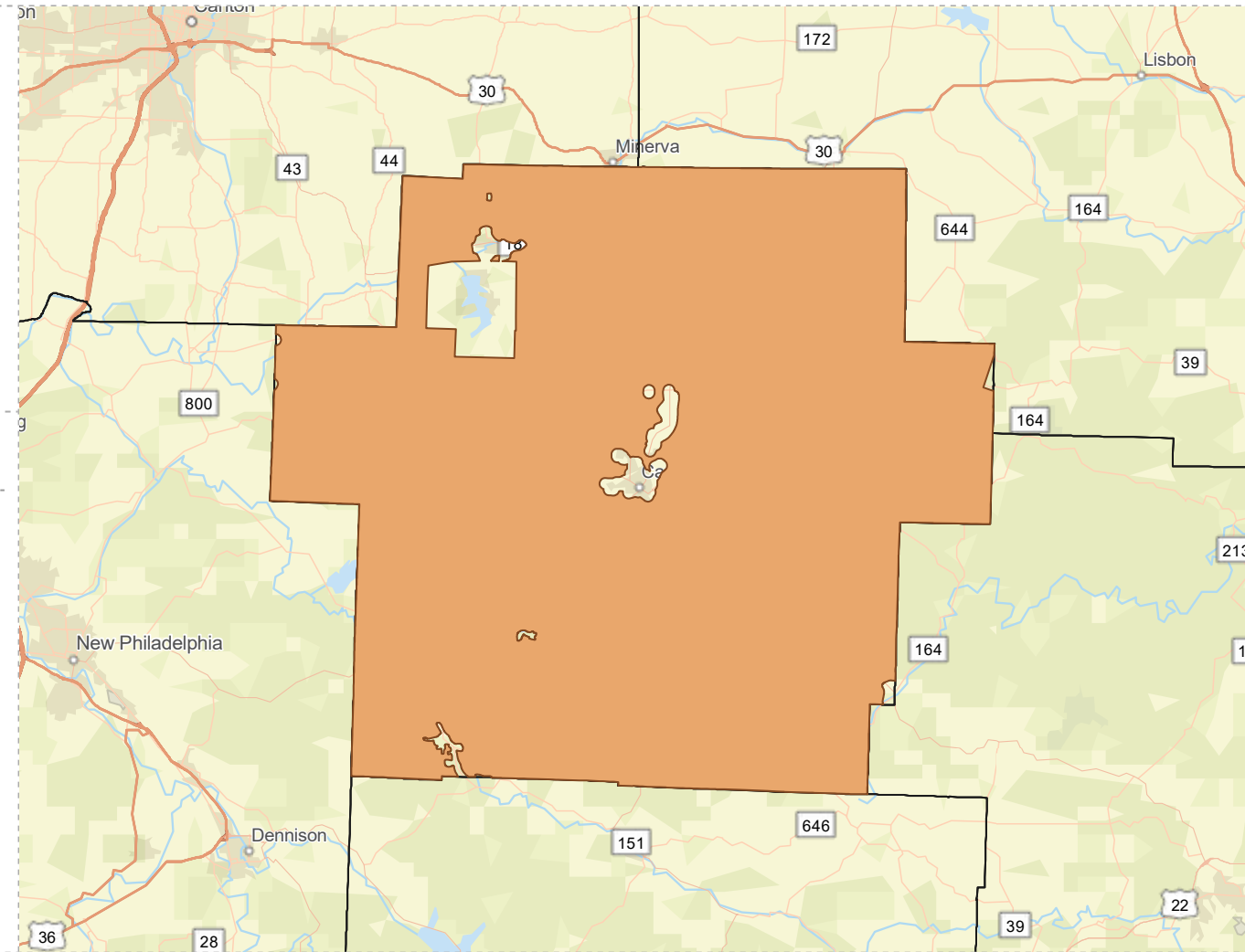
91%

Household Owns or Leases Any Vehicle



23%

Household Spent \$1-\$99 in Average Week at Food Stores



COLUMBIANA COUNTY WITH PUBLIC WATER ACCESS

Columbiana_With_Water_Merge

Area: 66.16 square miles



Voinovich School of Leadership and Public Service

Source: Generalized drinking water coverage data overlay with U.S. Census Bureau, Census 2010 Summary File 1. Esri forecasts for 2021 and 2026. All survey-based estimates are subject to sampling error. The calculated population displayed with Census data measures the variability of the estimates.

POPULATION



54,657

Total Population



Median Age

INCOME



18%

Households Receiving Food Stamps/SNAP



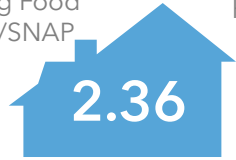
\$49,781

Median Household Income

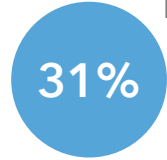


17%

Households Below the Poverty Level



Average Household Size



Households with 1+ Persons with a Disability

EDUCATION

12%

No High School Diploma



43%

High School Graduate



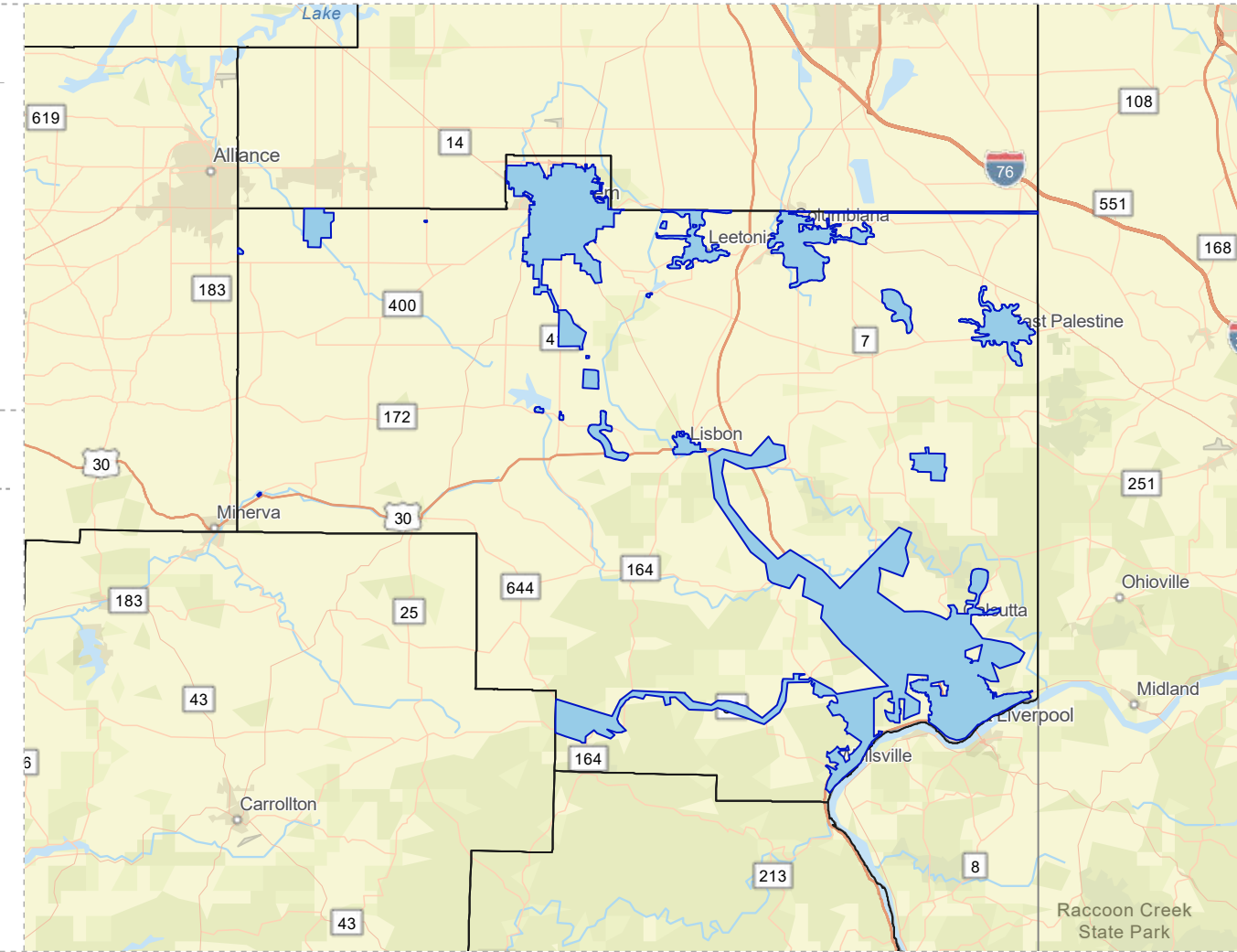
29%

Some College



16%

Bachelor's/ Grad/Prof Degree



EMPLOYMENT



54%

White Collar



33%

Blue Collar



Services

13%



Unemployment Rate

MISCELLANEOUS FACTS



88%

Have Internet Access at Home



\$416

Average Household Cost of Water & Sewer Maintenance (per year)



32%

Pop 35-64: One Type of Health Insurance



\$133,984

Median Home Value



88%

Household Owns or Leases Any Vehicle



22%

Household Spent \$1-\$99 in Average Week at Food Stores

COLUMBIANA COUNTY WITHOUT PUBLIC WATER ACCESS

Columbiana_Without_Water

Area: 468.53 square miles



Voinovich School of Leadership and Public Service

Source: Generalized drinking water coverage data overlay with U.S. Census Bureau, Census 2010 Summary File 1. Esri forecasts for 2021 and 2026. All survey-based estimates are subject to sampling error. The calculated population displayed with Census data measures the variability of the estimates.

POPULATION



49,015

Total Population



45.5

Median Age

INCOME



10%

Households Receiving Food Stamps/SNAP



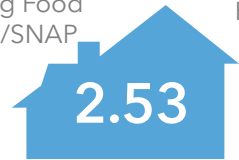
\$58,421

Median Household Income



10%

Households Below the Poverty Level



2.53

Average Household Size



28%

Households with 1+ Persons with a Disability

EMPLOYMENT



53%

White Collar



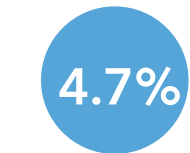
38%

Blue Collar



Services

9%



4.7%

Unemployment Rate

EDUCATION



10%

No High School Diploma



46%

High School Graduate



29%

Some College



16%

Bachelor's/ Grad/Prof Degree

MISCELLANEOUS FACTS



88%

Have Internet Access at Home



\$498

Average Household Cost of Water & Sewer Maintenance (per year)



36%

Pop 35-64: One Type of Health Insurance



\$184,912

Median Home Value



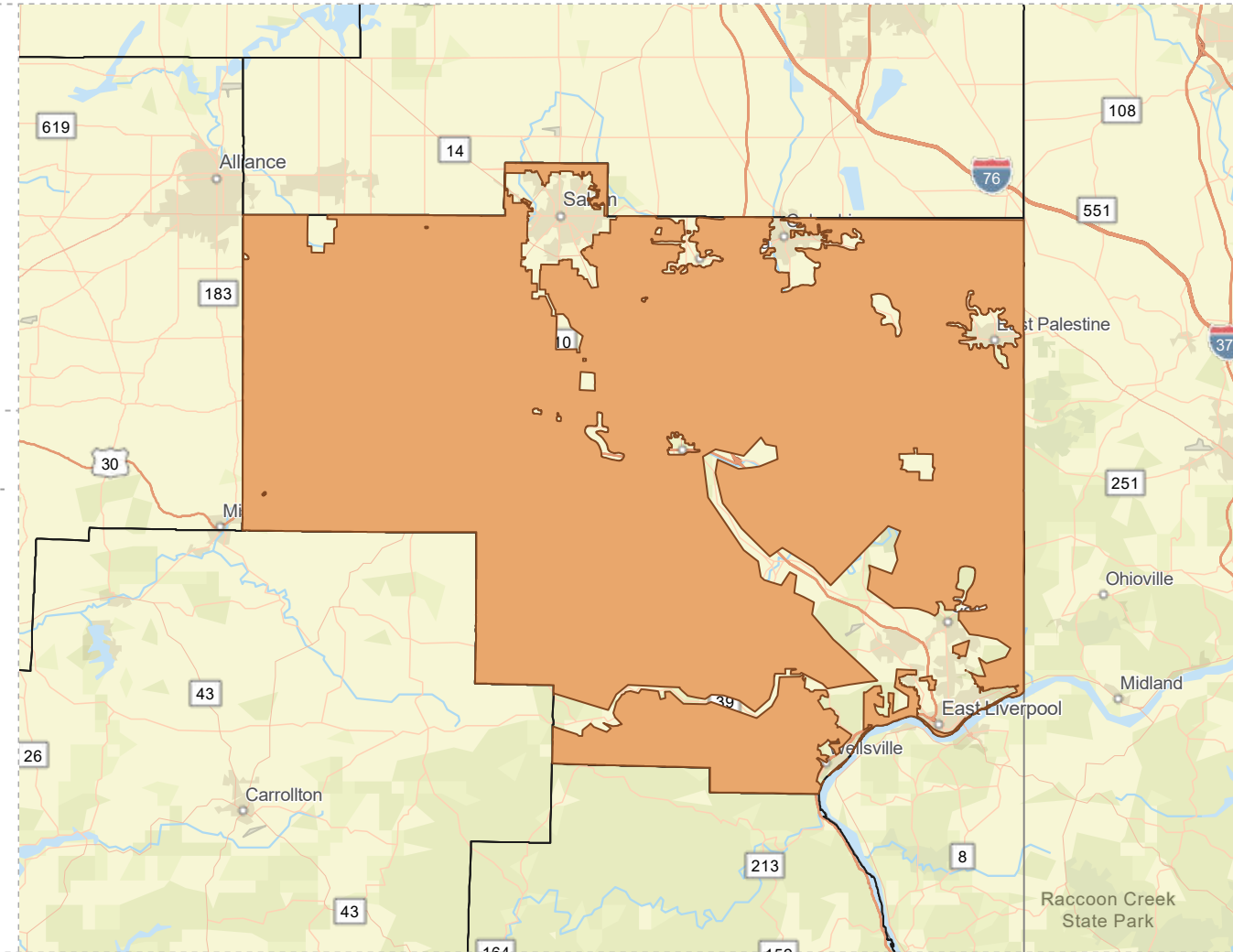
91%

Household Owns or Leases Any Vehicle



21%

Household Spent \$1-\$99 in Average Week at Food Stores



COSHOCTON COUNTY WITH PUBLIC WATER ACCESS

Coshocton_Co_With_Water

Area: 18.03 square miles



Voinovich School of Leadership and Public Service

Source: Generalized drinking water coverage data overlay with U.S. Census Bureau, Census 2010 Summary File 1. Esri forecasts for 2021 and 2026. All survey-based estimates are subject to sampling error. The calculated population displayed with Census data measures the variability of the estimates.

POPULATION



15,703

Total Population



43.0

Median Age

INCOME



23%

Households Receiving Food Stamps/SNAP



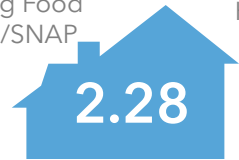
\$40,143

Median Household Income



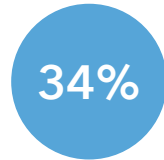
17%

Households Below the Poverty Level



2.28

Average Household Size



34%

Households with 1+ Persons with a Disability

EMPLOYMENT



50%

White Collar

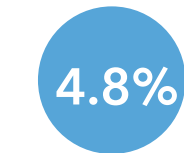


36%

Blue Collar



Services



4.8%

Unemployment Rate

EDUCATION



11%

No High School Diploma



49%

High School Graduate



25%

Some College



14%

Bachelor's/ Grad/Prof Degree

MISCELLANEOUS FACTS



89%

Have Internet Access at Home



\$369

Average Household Cost of Water & Sewer Maintenance (per year)



\$98,150

Median Home Value



86%

Household Owns or Leases Any Vehicle



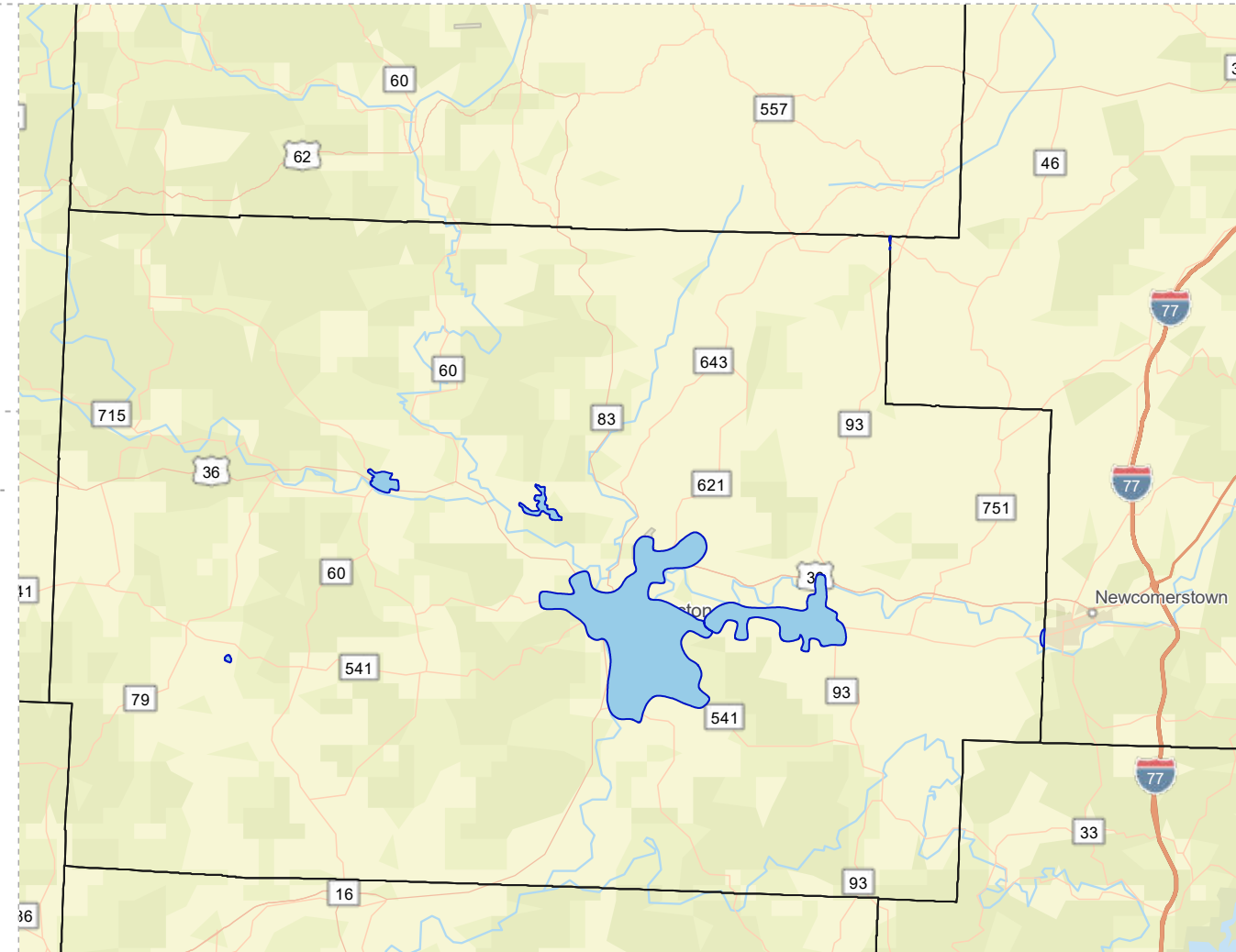
30%

Pop 35-64: One Type of Health Insurance



22%

Household Spent \$1-\$99 in Average Week at Food Stores



COSHOCTON COUNTY WITHOUT PUBLIC WATER ACCESS

Coshocton_Co_Without_Water

Area: 549.46 square miles



Voinovich School of Leadership and Public Service

Source: Generalized drinking water coverage data overlay with U.S. Census Bureau, Census 2010 Summary File 1. Esri forecasts for 2021 and 2026. All survey-based estimates are subject to sampling error. The calculated population displayed with Census data measures the variability of the estimates.

POPULATION



21,326

Total Population



Median Age

INCOME



11%

Households Receiving Food Stamps/SNAP



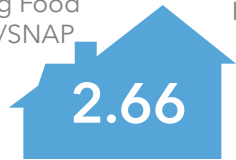
\$54,930

Median Household Income



11%

Households Below the Poverty Level



Average Household Size



Households with 1+ Persons with a Disability

EDUCATION



No High School Diploma



45%

High School Graduate



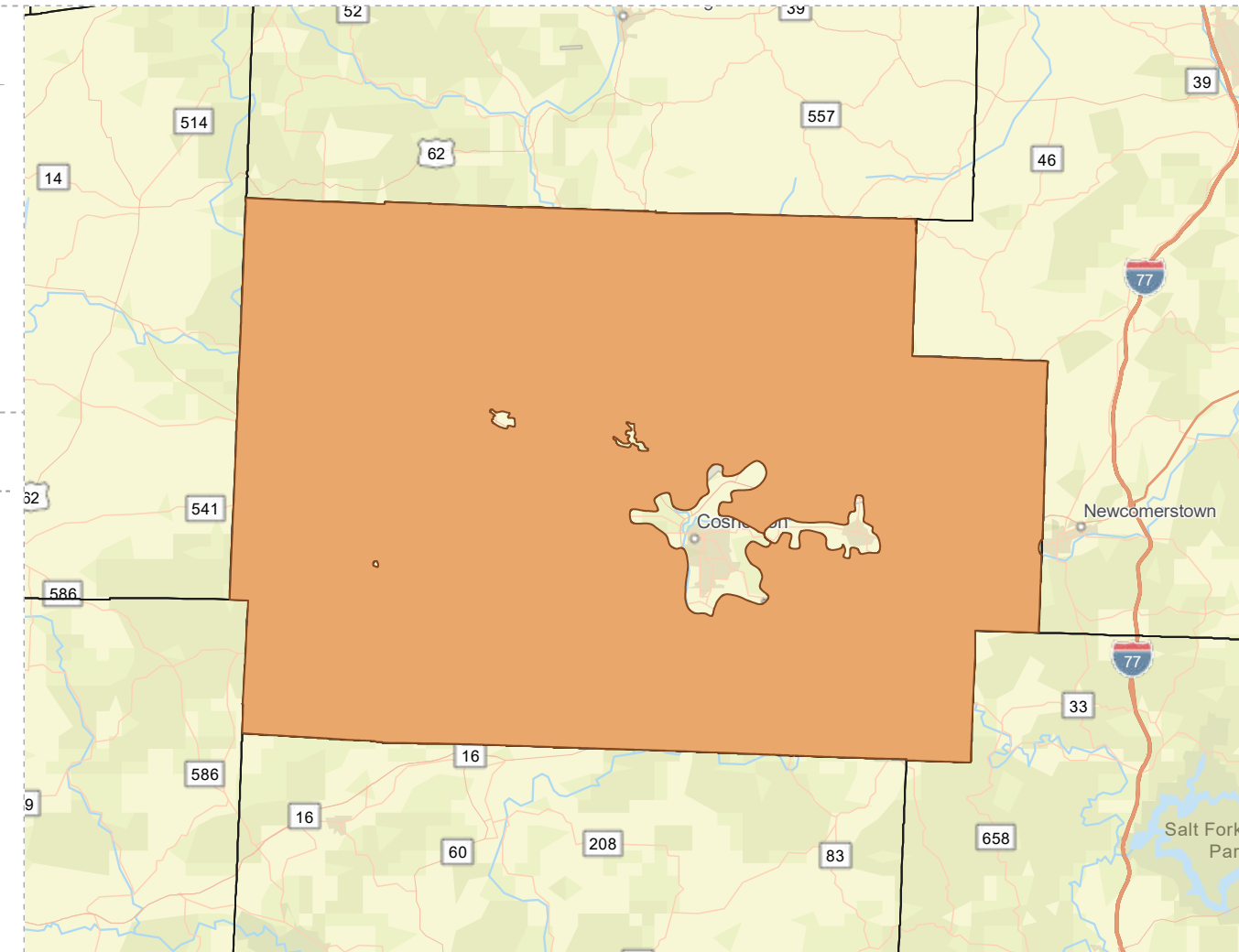
25%

Some College



14%

Bachelor's/ Grad/Prof Degree



EMPLOYMENT



46%

White Collar



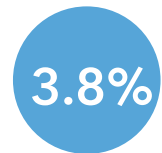
43%

Blue Collar



10%

Services



Unemployment Rate

MISCELLANEOUS FACTS



89%

Have Internet Access at Home



\$494

Average Household Cost of Water & Sewer Maintenance (per year)



31%

Pop 35-64: One Type of Health Insurance



\$205,076

Median Home Value



92%

Household Owns or Leases Any Vehicle



21%

Household Spent \$1-\$99 in Average Week at Food Stores

GUERNSEY COUNTY WITH PUBLIC WATER ACCESS

Guernsey_Co_With_Water_Merge

Area: 135.22 square miles



Voinovich School of Leadership and Public Service

Source: Generalized drinking water coverage data overlay with U.S. Census Bureau, Census 2010 Summary File 1. Esri forecasts for 2021 and 2026. All survey-based estimates are subject to sampling error. The calculated population displayed with Census data measures the variability of the estimates.

POPULATION



25,447

Total Population



42.8

Median Age

INCOME



20%

Households Receiving Food Stamps/SNAP



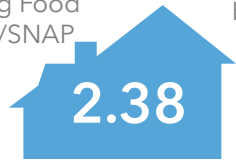
\$45,200

Median Household Income



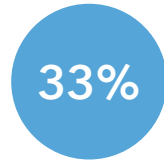
21%

Households Below the Poverty Level



2.38

Average Household Size



33%

Households with 1+ Persons with a Disability

EMPLOYMENT



57%

White Collar



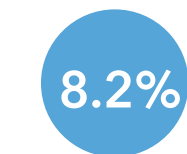
32%

Blue Collar



Services

11%



8.2%

Unemployment Rate

EDUCATION



13%

No High School Diploma



42%

High School Graduate



30%

Some College



16%

Bachelor's/ Grad/Prof Degree

MISCELLANEOUS FACTS



87%

Have Internet Access at Home



\$439

Average Household Cost of Water & Sewer Maintenance (per year)



31%

Pop 35-64: One Type of Health Insurance



\$153,684

Median Home Value



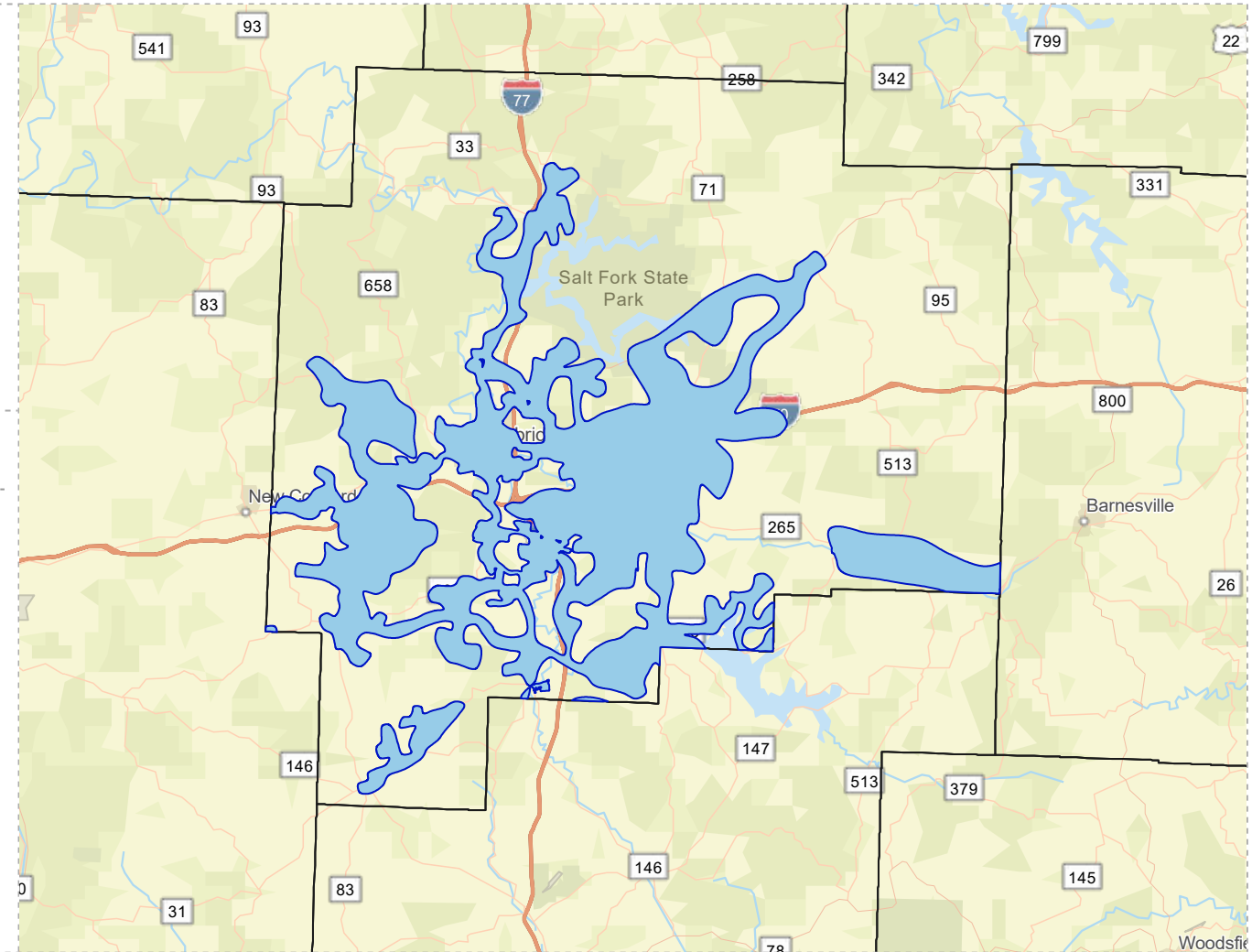
87%

Household Owns or Leases Any Vehicle



23%

Household Spent \$1-\$99 in Average Week at Food Stores



GUERNSEY COUNTY WITHOUT PUBLIC WATER ACCESS

Guernsey_Co_Without_Water

Area: 393.08 square miles



Voinovich School of Leadership and Public Service

Source: Generalized drinking water coverage data overlay with U.S. Census Bureau, Census 2010 Summary File 1. Esri forecasts for 2021 and 2026. All survey-based estimates are subject to sampling error. The calculated population displayed with Census data measures the variability of the estimates.

POPULATION



13,850

Total Population



Median Age

INCOME



12%

Households Receiving Food Stamps/SNAP



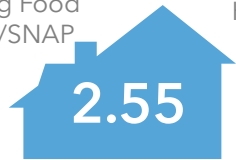
\$52,982

Median Household Income

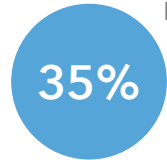


14%

Households Below the Poverty Level



Average Household Size



Households with 1+ Persons with a Disability

EDUCATION



No High School Diploma



43%

High School Graduate



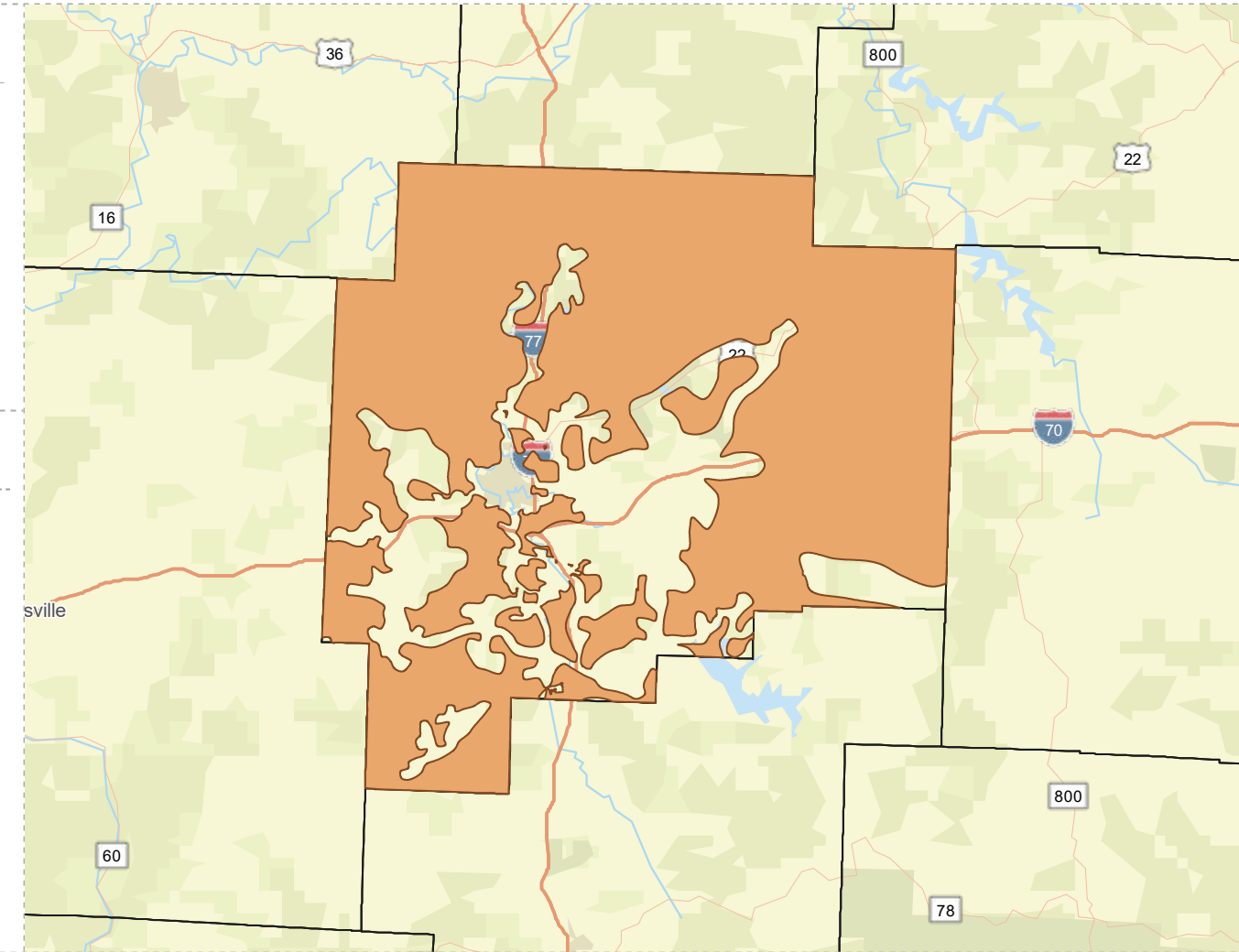
26%

Some College



16%

Bachelor's/ Grad/Prof Degree



EMPLOYMENT



54%

White Collar



36%

Blue Collar



Services

10%



Unemployment Rate

MISCELLANEOUS FACTS



87%

Have Internet Access at Home



\$502

Average Household Cost of Water & Sewer Maintenance (per year)



\$192,158

Median Home Value



91%

Household Owns or Leases Any Vehicle



31%

Pop 35-64: One Type of Health Insurance



24%

Household Spent \$1-\$99 in Average Week at Food Stores

HARRISON COUNTY WITH PUBLIC WATER ACCESS

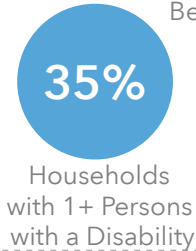
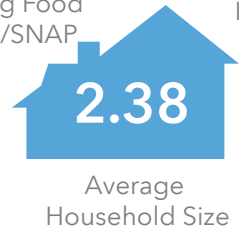
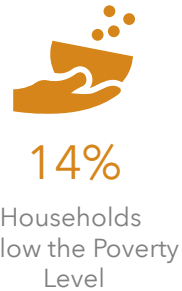
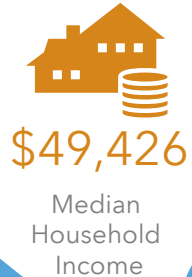
Harrison_Co_With_Water
Area: 27.51 square miles

Source: Generalized drinking water coverage data overlay with U.S. Census Bureau, Census 2010 Summary File 1. Esri forecasts for 2021 and 2026. All survey-based estimates are subject to sampling error. The calculated population displayed with Census data measures the variability of the estimates.

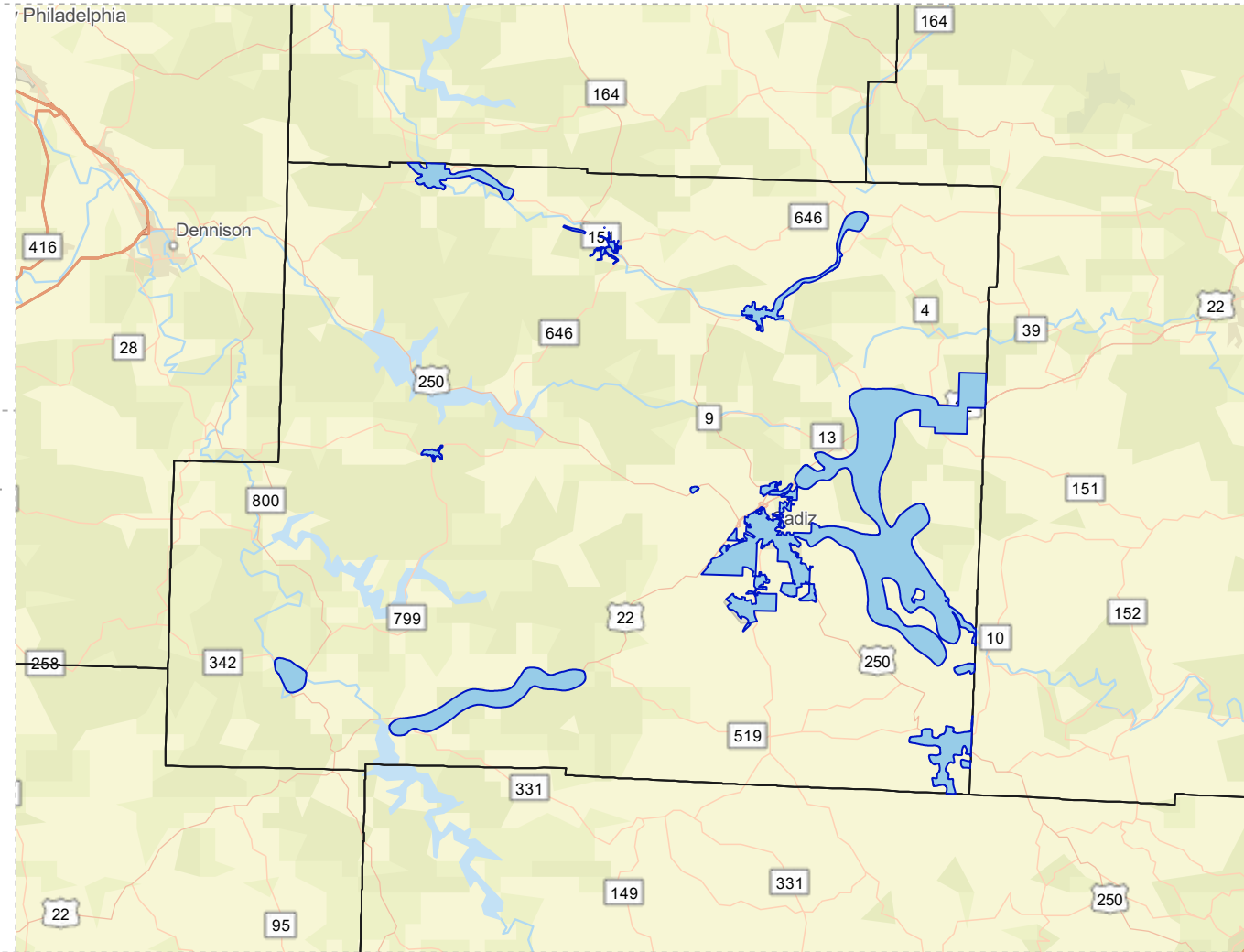
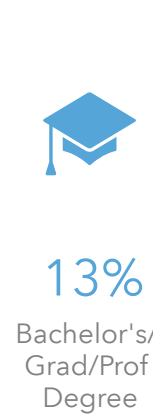
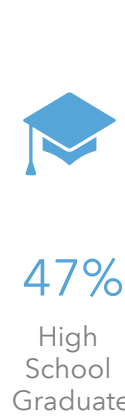
POPULATION



INCOME



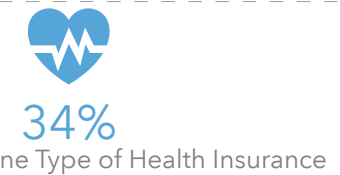
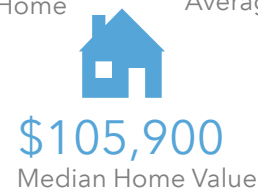
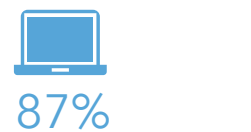
EDUCATION



EMPLOYMENT



MISCELLANEOUS FACTS



HARRISON COUNTY WITHOUT PUBLIC WATER ACCESS

Harrison_Co_Without_Water

Area: 383.26 square miles



Voinovich School of Leadership and Public Service

Source: Generalized drinking water coverage data overlay with U.S. Census Bureau, Census 2010 Summary File 1. Esri forecasts for 2021 and 2026. All survey-based estimates are subject to sampling error. The calculated population displayed with Census data measures the variability of the estimates.

POPULATION



10,339

Total Population



46.9

Median Age

INCOME



16%

Households Receiving Food Stamps/SNAP



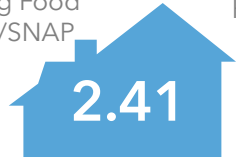
\$51,004

Median Household Income



17%

Households Below the Poverty Level



2.41

Average Household Size



34%

Households with 1+ Persons with a Disability

EMPLOYMENT



51%

White Collar



40%

Blue Collar



Services

9%



2.6%

Unemployment Rate

EDUCATION



13%

No High School Diploma



48%

High School Graduate



27%

Some College



12%

Bachelor's/ Grad/Prof Degree

MISCELLANEOUS FACTS



85%

Have Internet Access at Home



\$484

Average Household Cost of Water & Sewer Maintenance (per year)



35%

Pop 35-64: One Type of Health Insurance



\$119,332

Median Home Value



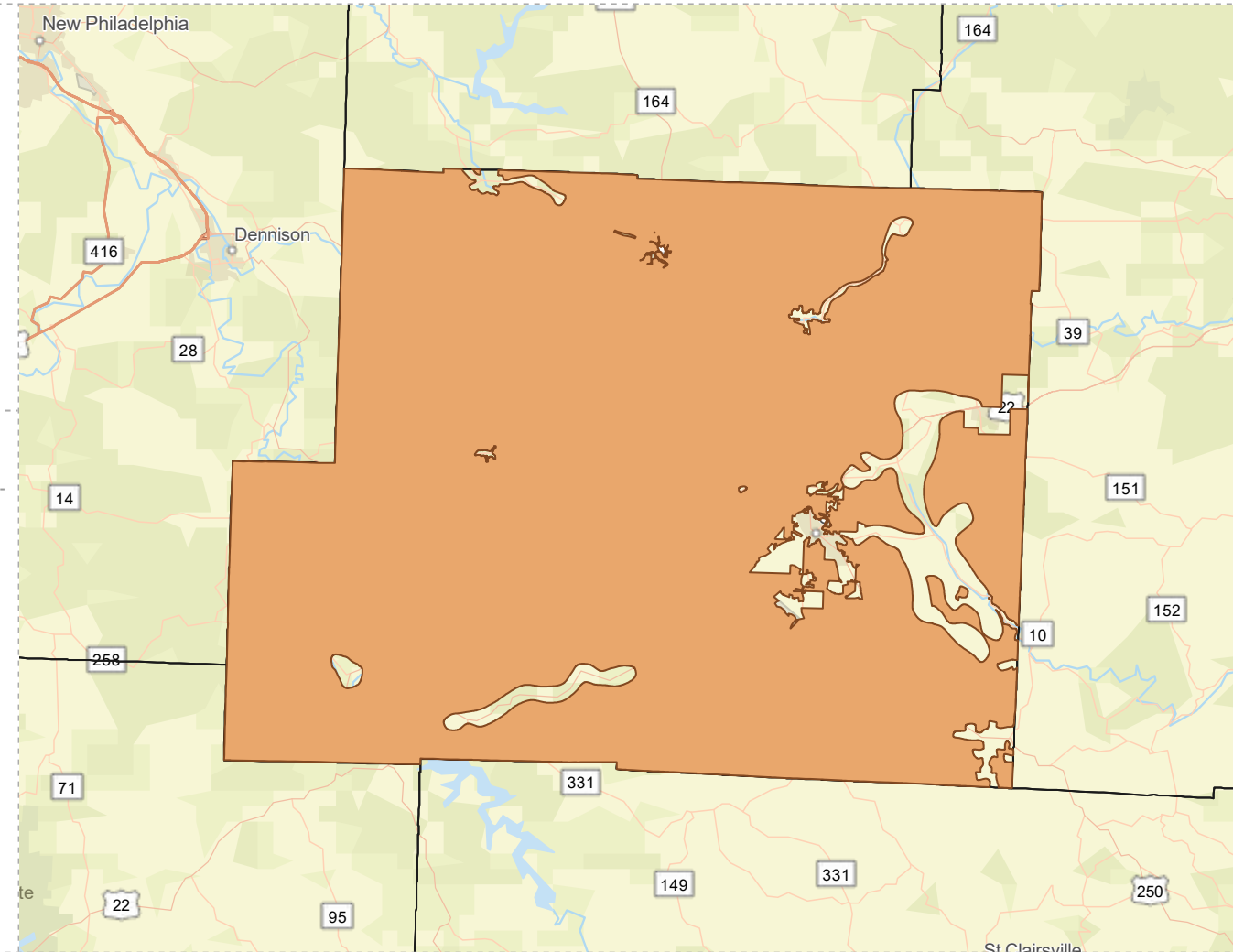
89%

Household Owns or Leases Any Vehicle



25%

Household Spent \$1-\$99 in Average Week at Food Stores



HOLMES COUNTY WITH PUBLIC WATER ACCESS

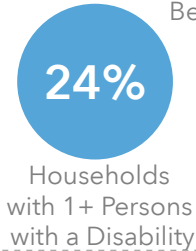
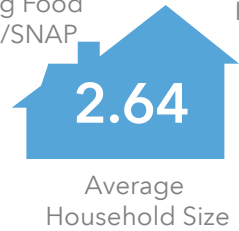
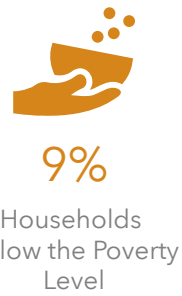
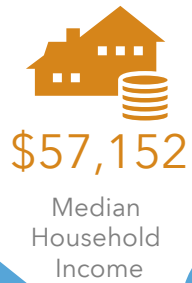
Holmes_Co_With_Water
 Area: 23.24 square miles

Source: Generalized drinking water coverage data overlay with U.S. Census Bureau, Census 2010 Summary File 1. Esri forecasts for 2021 and 2026. All survey-based estimates are subject to sampling error. The calculated population displayed with Census data measures the variability of the estimates.

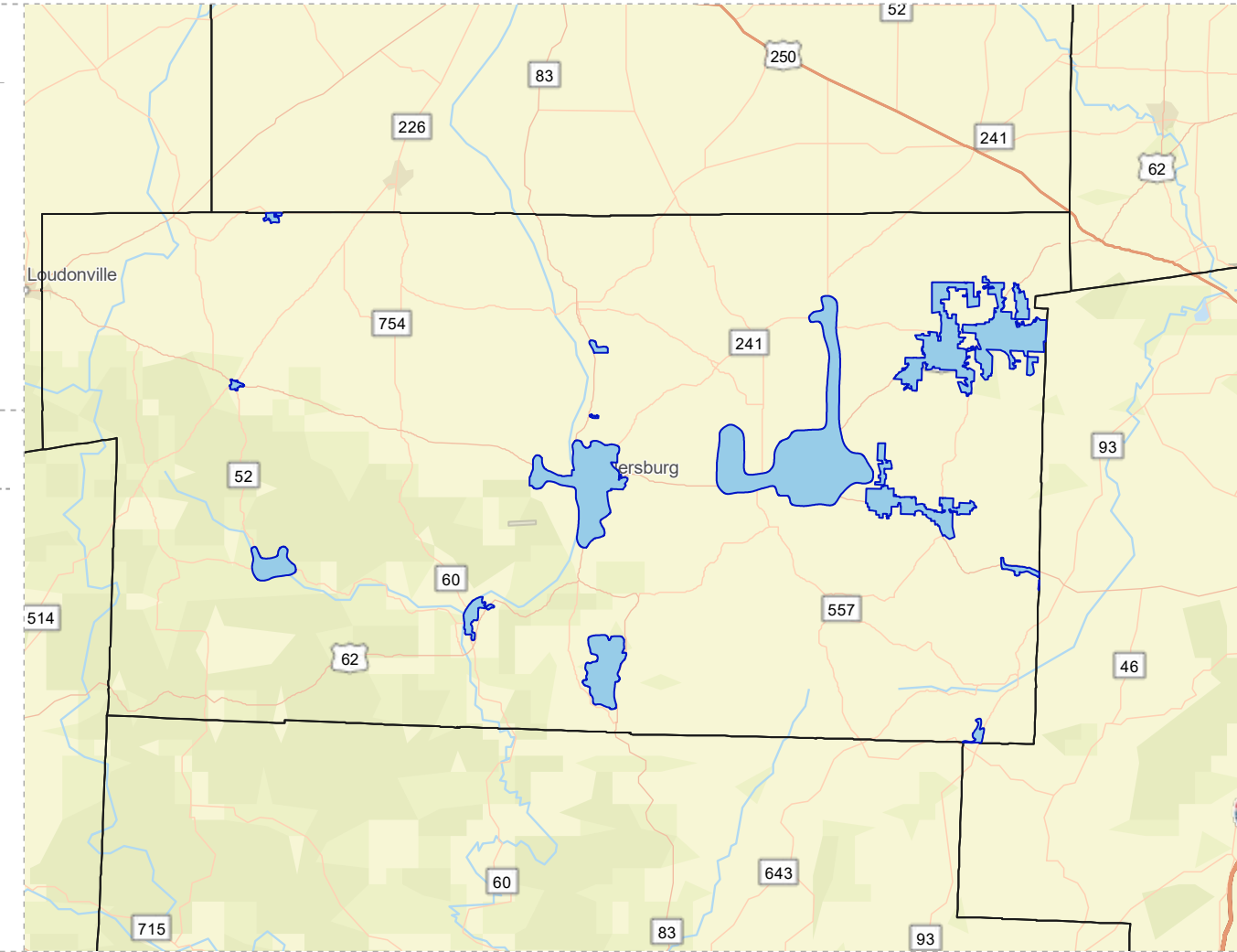
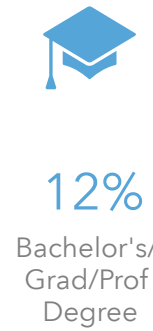
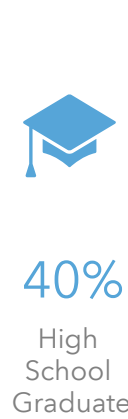
POPULATION



INCOME



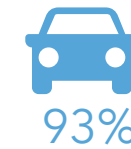
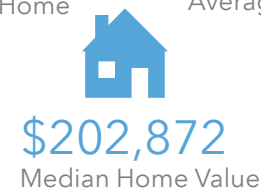
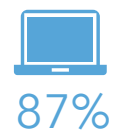
EDUCATION



EMPLOYMENT



MISCELLANEOUS FACTS



HOLMES COUNTY WITHOUT PUBLIC WATER ACCESS

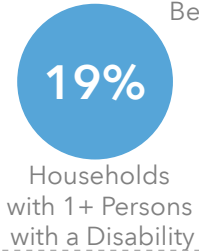
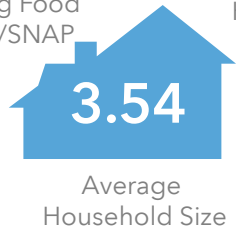
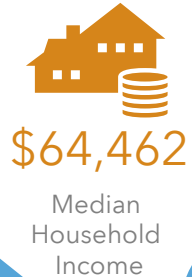
Holmes_Co_Without_Water
Area: 400.74 square miles

Source: Generalized drinking water coverage data overlay with U.S. Census Bureau, Census 2010 Summary File 1. Esri forecasts for 2021 and 2026. All survey-based estimates are subject to sampling error. The calculated population displayed with Census data measures the variability of the estimates.

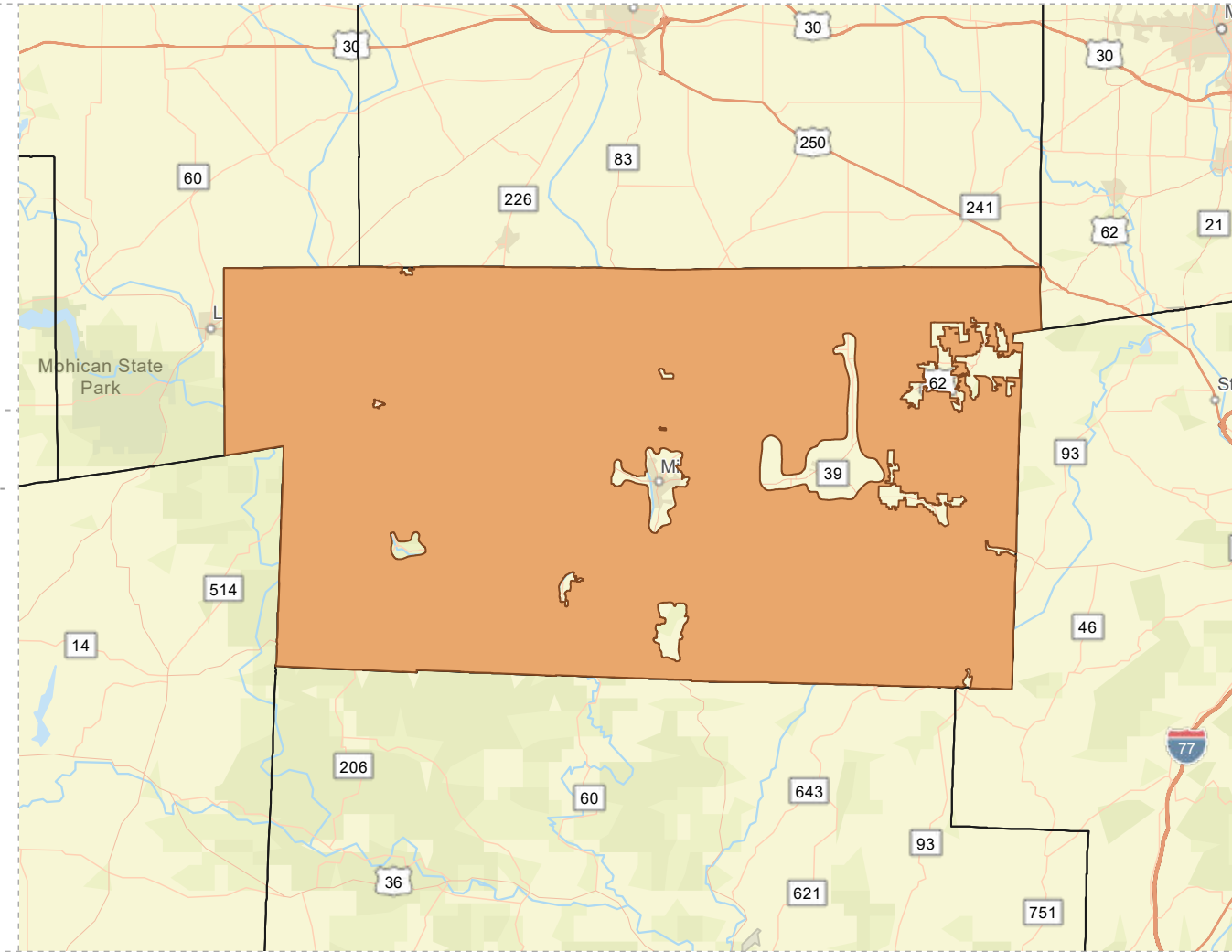
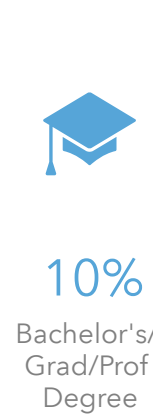
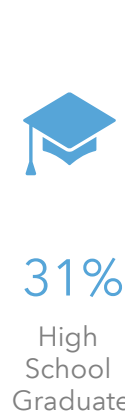
POPULATION



INCOME



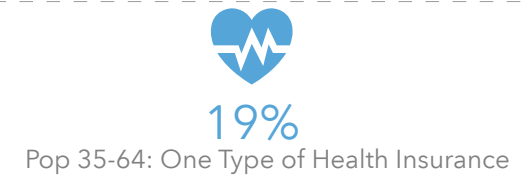
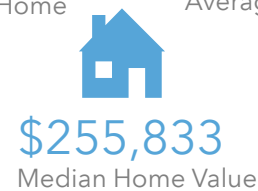
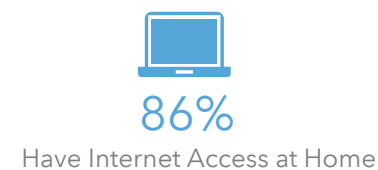
EDUCATION



EMPLOYMENT



MISCELLANEOUS FACTS



JEFFERSON COUNTY WITH PUBLIC WATER ACCESS

Jefferson_Co_With_Water

Area: 111.79 square miles



Voinovich School of Leadership and Public Service

Source: Generalized drinking water coverage data overlay with U.S. Census Bureau, Census 2010 Summary File 1. Esri forecasts for 2021 and 2026. All survey-based estimates are subject to sampling error. The calculated population displayed with Census data measures the variability of the estimates.

POPULATION



45,668

Total Population



46.5

Median Age

INCOME



19%

Households Receiving Food Stamps/SNAP



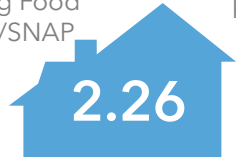
\$45,148

Median Household Income



19%

Households Below the Poverty Level



2.26

Average Household Size



33%

Households with 1+ Persons with a Disability

EMPLOYMENT



60%

White Collar



26%

Blue Collar



Services

13%



5.0%

Unemployment Rate

EDUCATION



8%

No High School Diploma



43%

High School Graduate



31%

Some College



17%

Bachelor's/ Grad/Prof Degree

MISCELLANEOUS FACTS



88%

Have Internet Access at Home



\$422

Average Household Cost of Water & Sewer Maintenance (per year)



33%

Pop 35-64: One Type of Health Insurance



\$150,043

Median Home Value



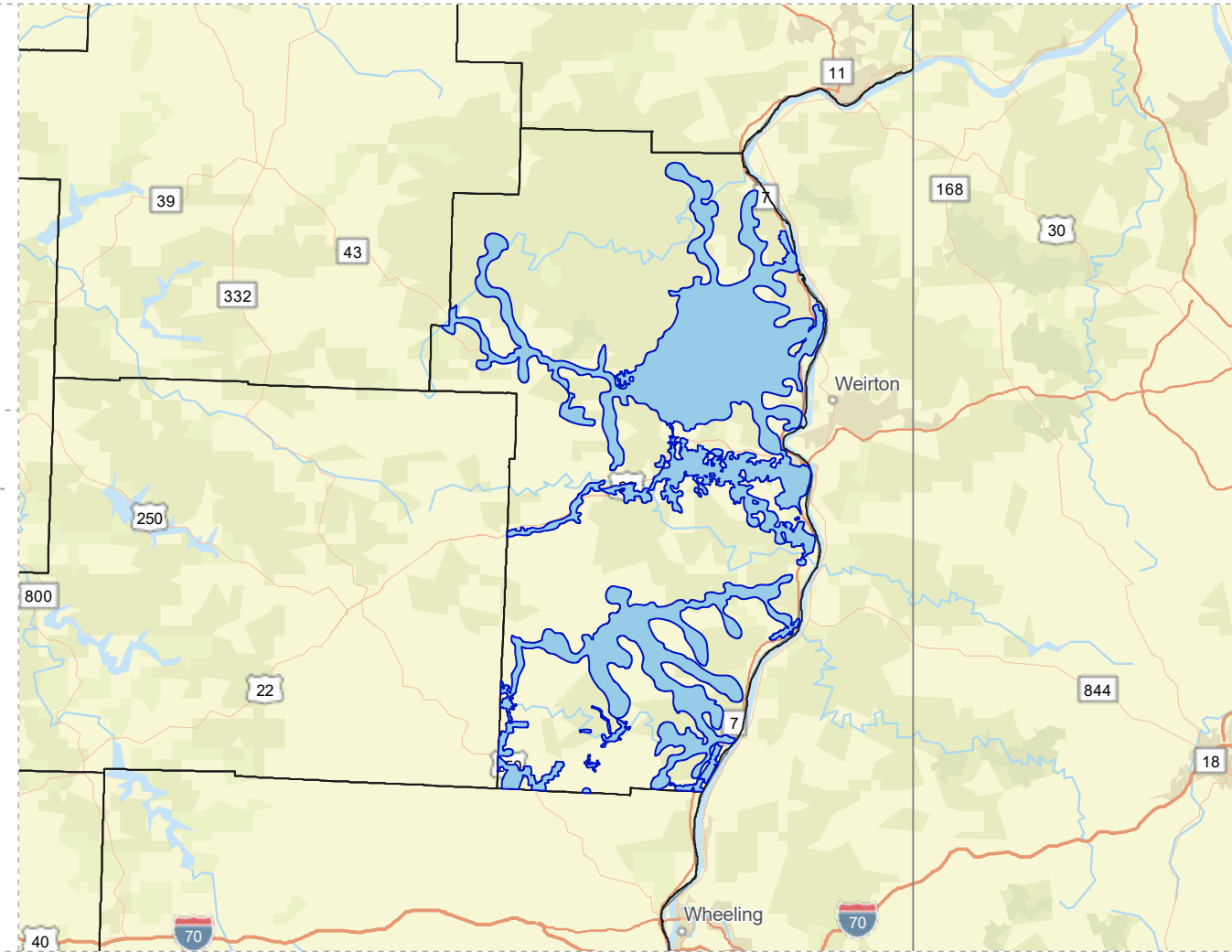
87%

Household Owns or Leases Any Vehicle



21%

Household Spent \$1-\$99 in Average Week at Food Stores



JEFFERSON COUNTY WITHOUT PUBLIC WATER ACCESS

Jefferson_Co_Without_Water

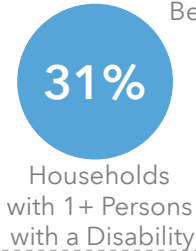
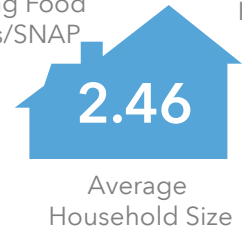
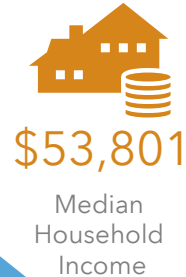
Area: 299.16 square miles

Source: Generalized drinking water coverage data overlay with U.S. Census Bureau, Census 2010 Summary File 1. Esri forecasts for 2021 and 2026. All survey-based estimates are subject to sampling error. The calculated population displayed with Census data measures the variability of the estimates.

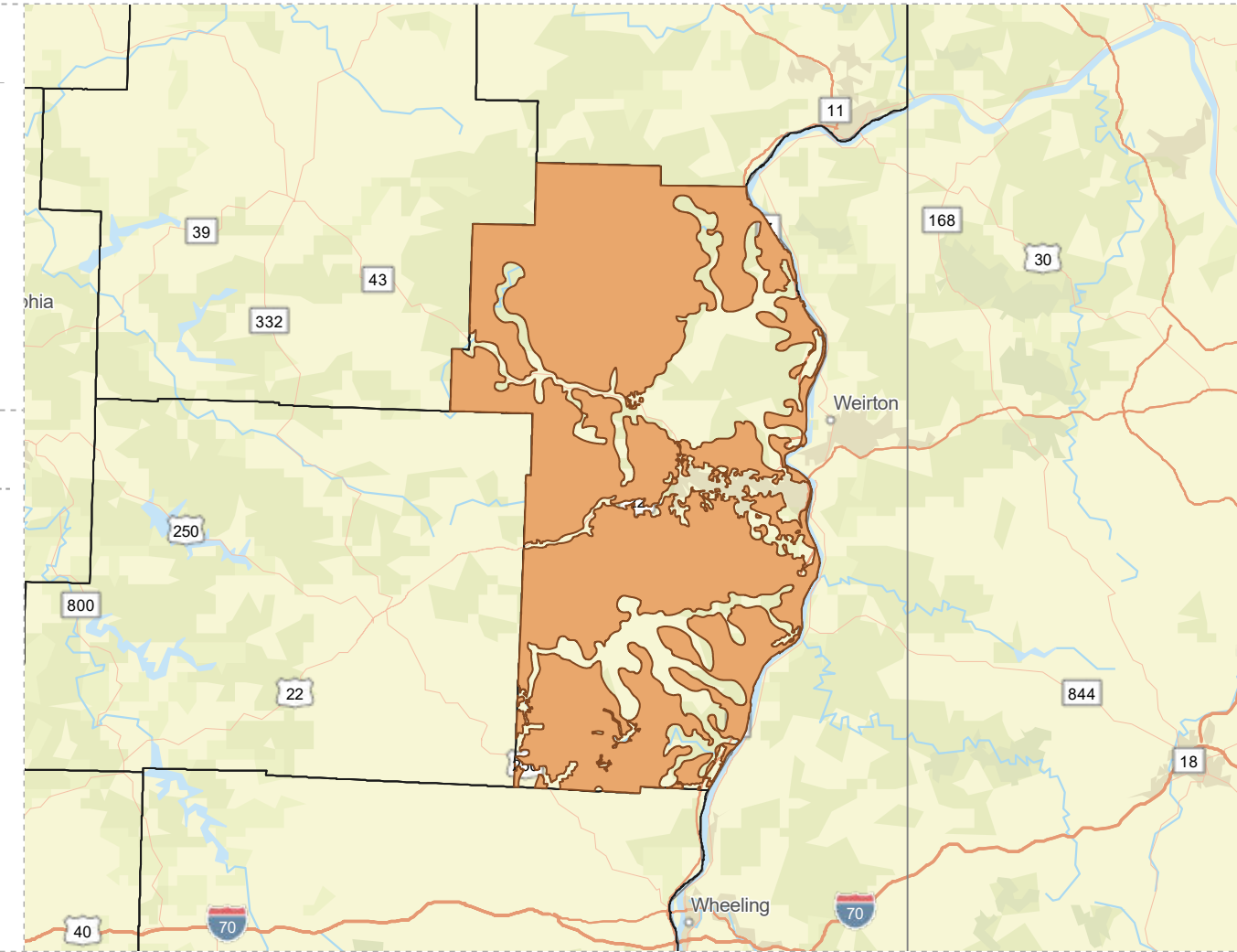
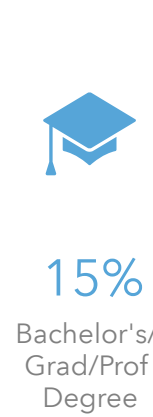
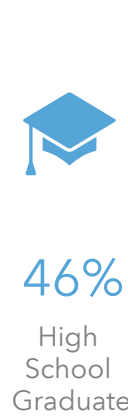
POPULATION



INCOME



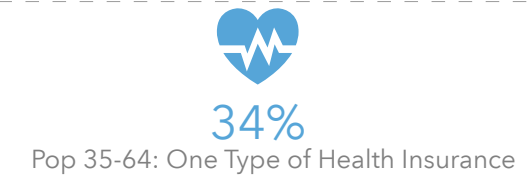
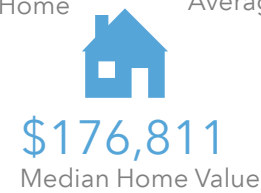
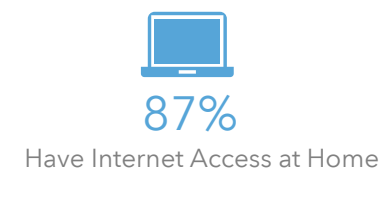
EDUCATION



EMPLOYMENT



MISCELLANEOUS FACTS



MUSKINGUM COUNTY WITH PUBLIC WATER ACCESS

Muskingum_Co_With_Water_Merge

Area: 140.63 square miles



Voinovich School of Leadership and Public Service

Source: Generalized drinking water coverage data overlay with U.S. Census Bureau, Census 2010 Summary File 1. Esri forecasts for 2021 and 2026. All survey-based estimates are subject to sampling error. The calculated population displayed with Census data measures the variability of the estimates.

POPULATION



63,198

Total Population



41.4

Median Age

INCOME



22%

Households Receiving Food Stamps/SNAP



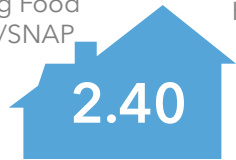
\$49,172

Median Household Income



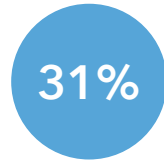
17%

Households Below the Poverty Level



2.40

Average Household Size



31%

Households with 1+ Persons with a Disability

EMPLOYMENT



59%

White Collar



29%

Blue Collar



Services

12%



5.3%

Unemployment Rate

EDUCATION



11%

No High School Diploma



40%

High School Graduate



31%

Some College



18%

Bachelor's/ Grad/Prof Degree

MISCELLANEOUS FACTS



89%

Have Internet Access at Home



\$442

Average Household Cost of Water & Sewer Maintenance (per year)



32%

Pop 35-64: One Type of Health Insurance



\$158,451

Median Home Value



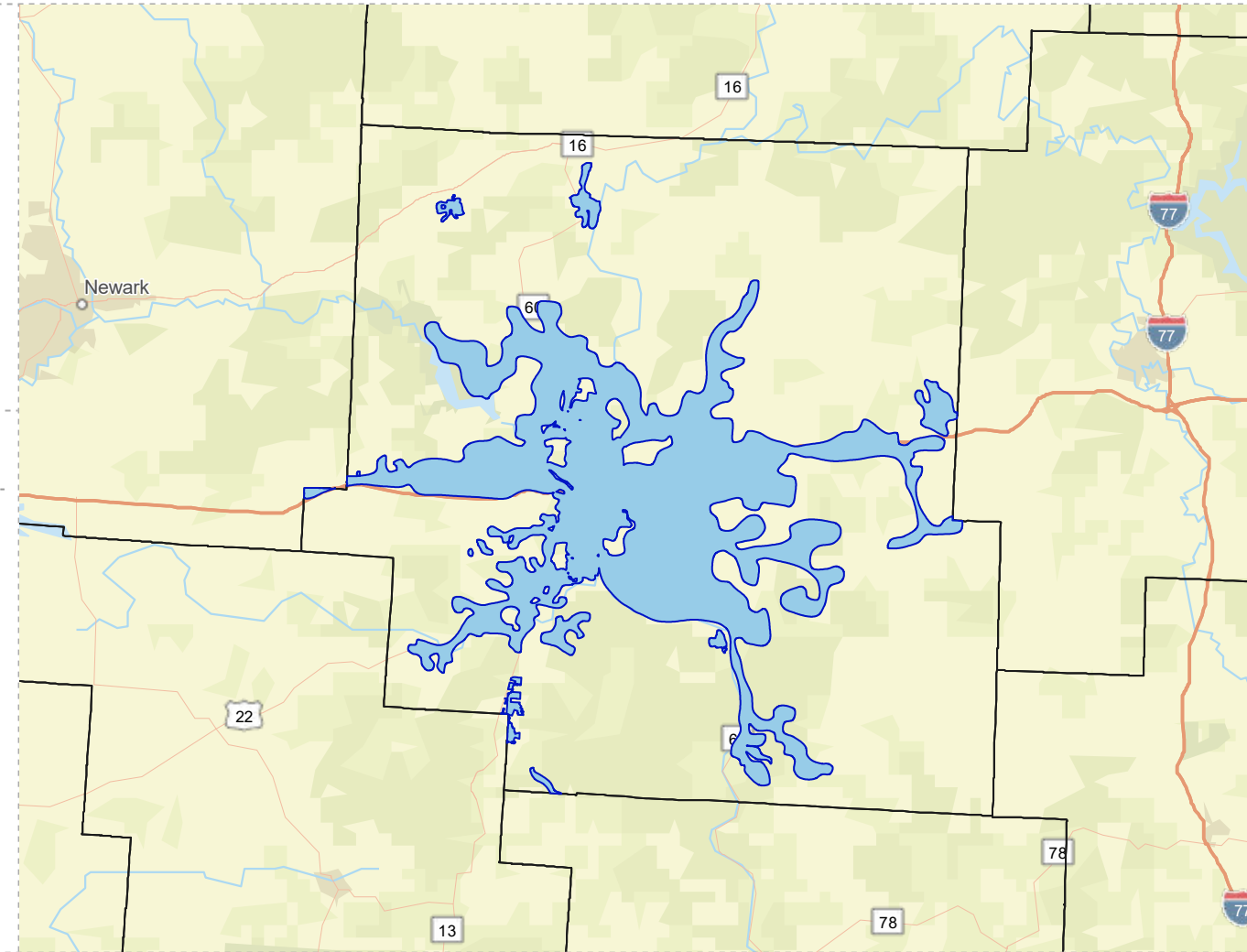
84%

Household Owns or Leases Any Vehicle



22%

Household Spent \$1-\$99 in Average Week at Food Stores



MUSKINGUM COUNTY WITHOUT PUBLIC WATER ACCESS

Muskingum_Co_Without_Water

Area: 531.95 square miles



Voinovich School of Leadership and Public Service

Source: Generalized drinking water coverage data overlay with U.S. Census Bureau, Census 2010 Summary File 1. Esri forecasts for 2021 and 2026. All survey-based estimates are subject to sampling error. The calculated population displayed with Census data measures the variability of the estimates.

POPULATION



23,389

Total Population



42.4

Median Age

INCOME



12%

Households Receiving Food Stamps/SNAP



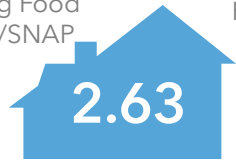
\$56,639

Median Household Income



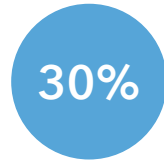
9%

Households Below the Poverty Level



2.63

Average Household Size



30%

Households with 1+ Persons with a Disability

EDUCATION



12%

No High School Diploma



43%

High School Graduate



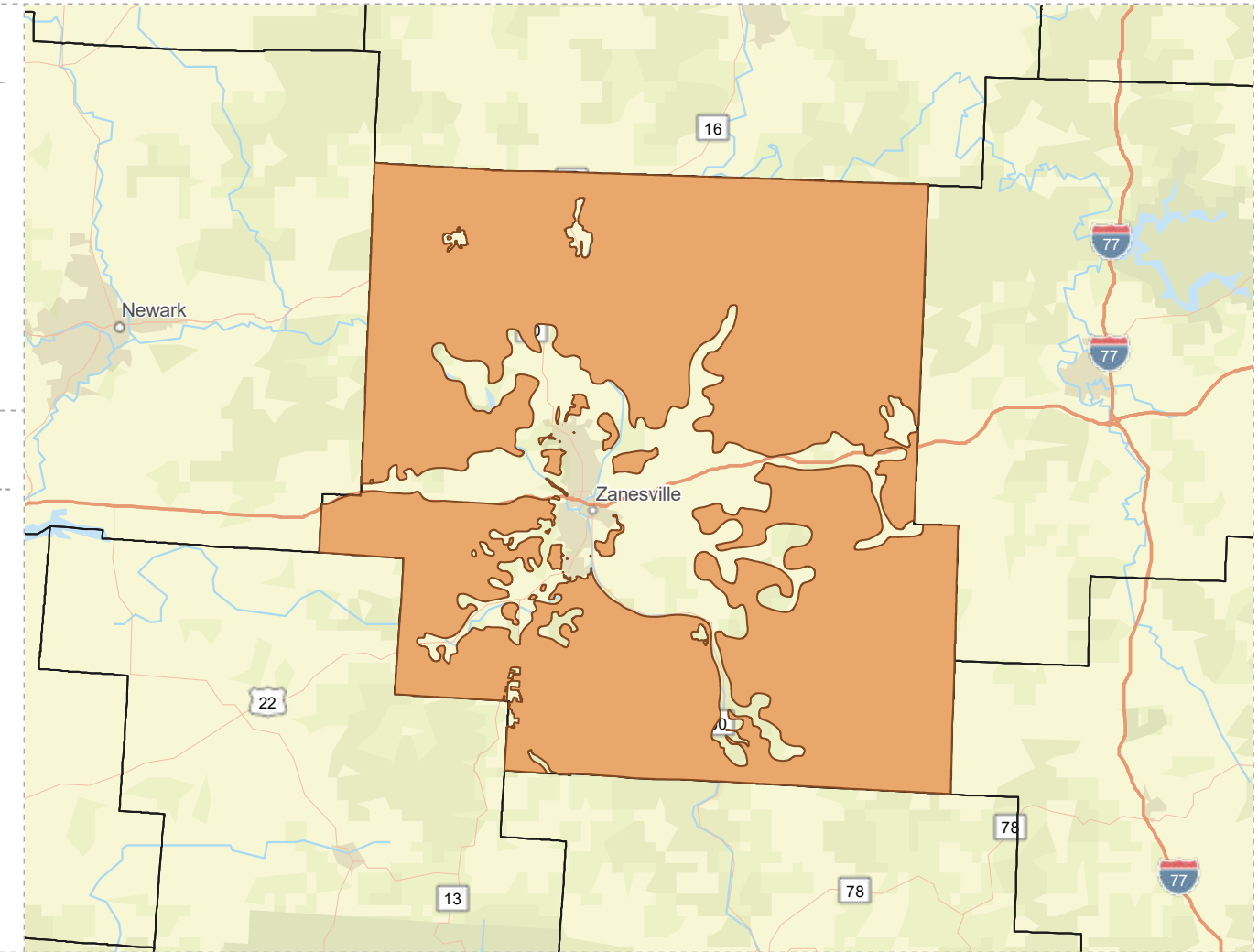
29%

Some College



16%

Bachelor's/ Grad/Prof Degree



EMPLOYMENT



54%

White Collar



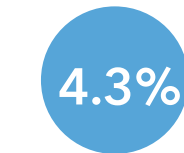
36%

Blue Collar



Services

10%



4.3%

Unemployment Rate

MISCELLANEOUS FACTS



90%

Have Internet Access at Home



\$508

Average Household Cost of Water & Sewer Maintenance (per year)



34%

Pop 35-64: One Type of Health Insurance



\$180,983

Median Home Value



92%

Household Owns or Leases Any Vehicle



20%

Household Spent \$1-\$99 in Average Week at Food Stores

TUSCARAWAS COUNTY WITH PUBLIC WATER ACCESS

Tuscarawas_Co_With_Water

Area: 49.39 square miles



Voinovich School of Leadership and Public Service

Source: Generalized drinking water coverage data overlay with U.S. Census Bureau, Census 2010 Summary File 1. Esri forecasts for 2021 and 2026. All survey-based estimates are subject to sampling error. The calculated population displayed with Census data measures the variability of the estimates.

POPULATION



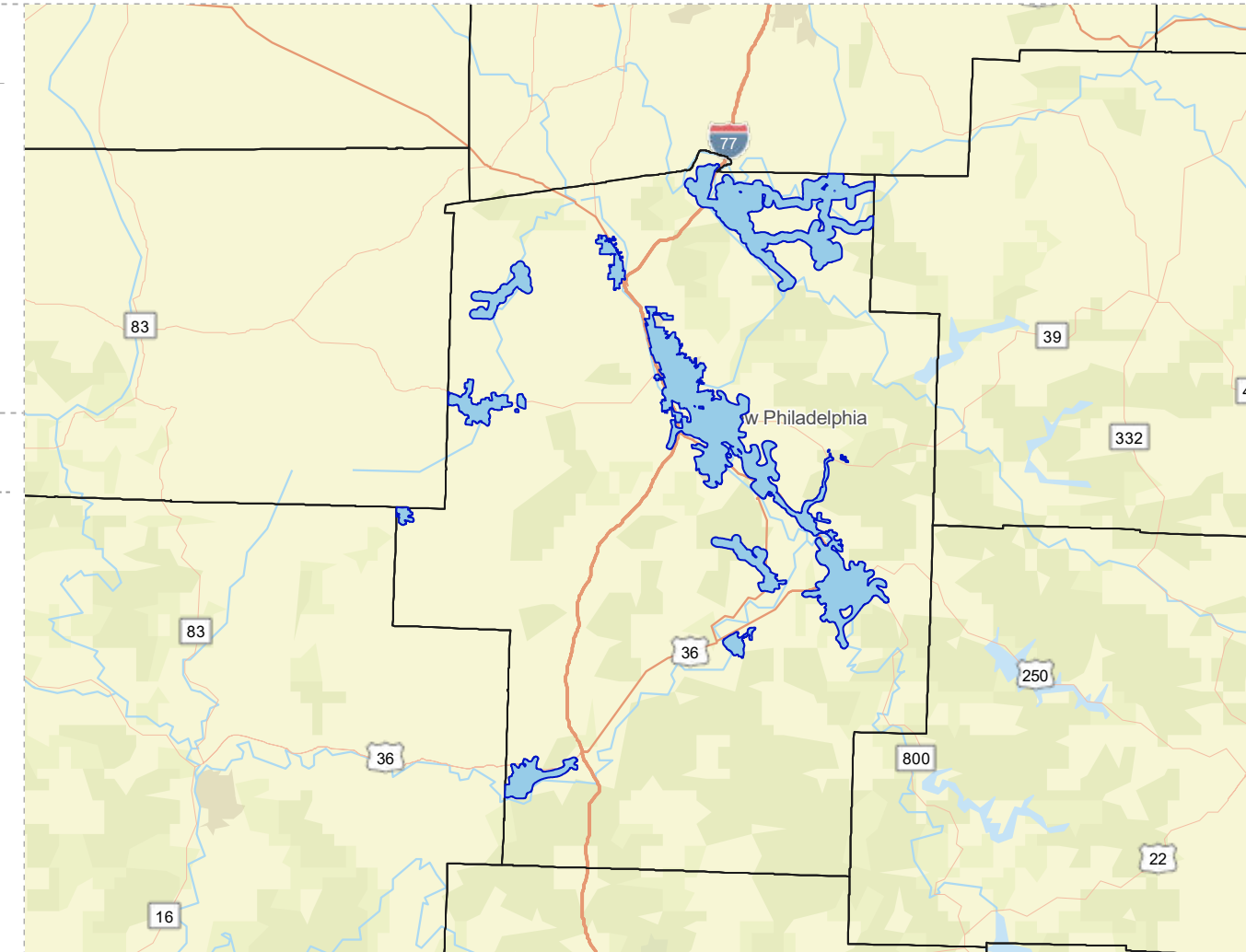
56,945

Total Population



42.6

Median Age



INCOME



16%

Households Receiving Food Stamps/SNAP



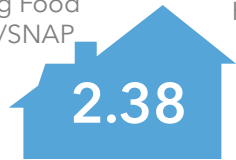
\$50,840

Median Household Income



15%

Households Below the Poverty Level



2.38

Average Household Size



29%

Households with 1+ Persons with a Disability

EDUCATION



13%

No High School Diploma



43%

High School Graduate



25%

Some College



19%

Bachelor's/ Grad/Prof Degree

EMPLOYMENT



55%

White Collar



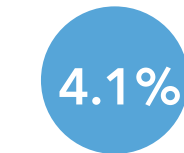
34%

Blue Collar



Services

11%



4.1%

Unemployment Rate

MISCELLANEOUS FACTS



89%

Have Internet Access at Home



\$441

Average Household Cost of Water & Sewer Maintenance (per year)



\$159,327

Median Home Value



89%

Household Owns or Leases Any Vehicle



30%

Pop 35-64: One Type of Health Insurance



22%

Household Spent \$1-\$99 in Average Week at Food Stores

TUSCARAWAS COUNTY WITHOUT PUBLIC WATER ACCESS

Tuscarawas_Co_Without_Water

Area: 522.06 square miles



Voinovich School of Leadership and Public Service

Source: Generalized drinking water coverage data overlay with U.S. Census Bureau, Census 2010 Summary File 1. Esri forecasts for 2021 and 2026. All survey-based estimates are subject to sampling error. The calculated population displayed with Census data measures the variability of the estimates.

POPULATION



35,798

Total Population



43.4

Median Age

INCOME



8%

Households Receiving Food Stamps/SNAP



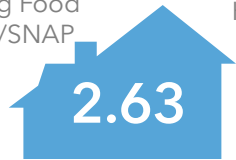
\$58,735

Median Household Income



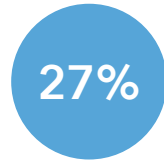
9%

Households Below the Poverty Level



2.63

Average Household Size



27%

Households with 1+ Persons with a Disability

EMPLOYMENT



52%

White Collar



40%

Blue Collar



8%

Services



2.6%

Unemployment Rate

EDUCATION



14%

No High School Diploma



46%

High School Graduate



22%

Some College



18%

Bachelor's/ Grad/Prof Degree

MISCELLANEOUS FACTS



89%

Have Internet Access at Home



\$519

Average Household Cost of Water & Sewer Maintenance (per year)



35%

Pop 35-64: One Type of Health Insurance



\$210,612

Median Home Value



92%

Household Owns or Leases Any Vehicle



21%

Household Spent \$1-\$99 in Average Week at Food Stores

