

# OVRDC Water Access

N  
 Source: Ohio EPA, Community Water Systems coverage area data and/or line area data. Created by Ohio University Voinovich School June, 2022



# OVRDC WITH PUBLIC WATER ACCESS

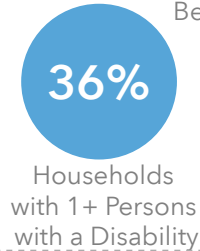
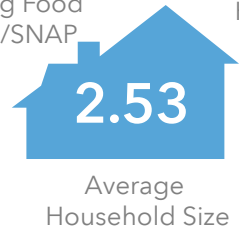
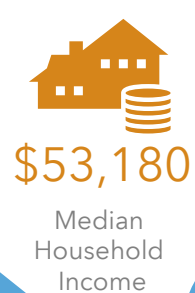
OVRDC\_With\_Water  
Area: 3,898.49 square miles

Source: Generalized drinking water coverage data overlay with U.S. Census Bureau, Census 2010 Summary File 1. Esri forecasts for 2021 and 2026. All survey-based estimates are subject to sampling error. The calculated population displayed with Census data measures the variability of the estimates.

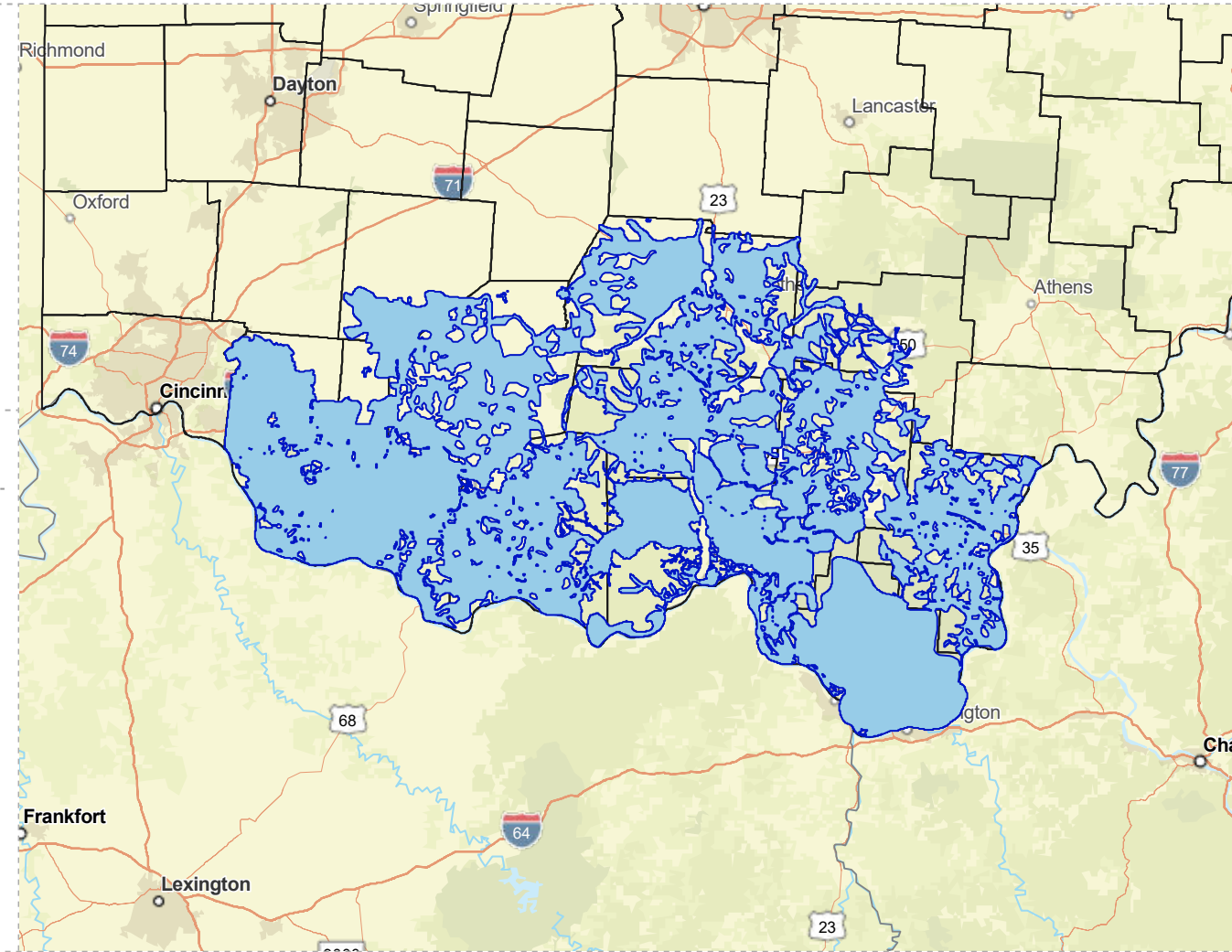
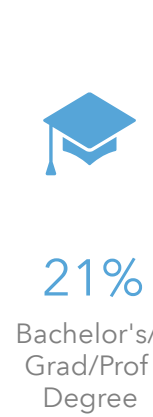
## POPULATION



## INCOME



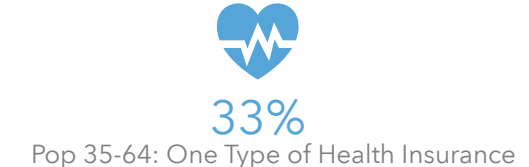
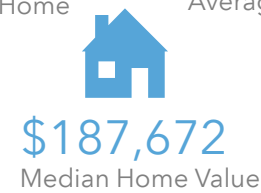
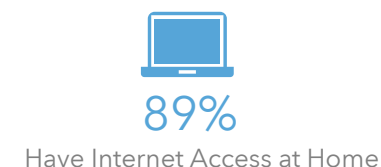
## EDUCATION



## EMPLOYMENT



## MISCELLANEOUS FACTS



# OVRDC WITHOUT PUBLIC WATER ACCESS

OVRDC\_Without\_Water  
Area: 1,848.29 square miles

Source: Generalized drinking water coverage data overlay with U.S. Census Bureau, Census 2010 Summary File 1. Esri forecasts for 2021 and 2026. All survey-based estimates are subject to sampling error. The calculated population displayed with Census data measures the variability of the estimates.

## POPULATION



89,493

Total Population



42.2

Median Age

## INCOME



19%

Households Receiving Food Stamps/SNAP



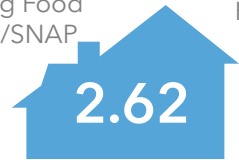
\$52,580

Median Household Income



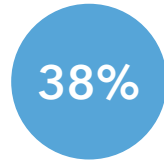
16%

Households Below the Poverty Level



2.62

Average Household Size



38%

Households with 1+ Persons with a Disability

## EMPLOYMENT



55%

White Collar



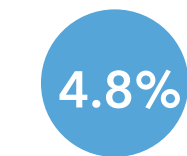
34%

Blue Collar



Services

11%



4.8%

Unemployment Rate

## EDUCATION



15%

No High School Diploma



43%

High School Graduate



26%

Some College



16%

Bachelor's/ Grad/Prof Degree

## MISCELLANEOUS FACTS



87%

Have Internet Access at Home



\$508

Average Household Cost of Water & Sewer Maintenance (per year)



34%

Pop 35-64: One Type of Health Insurance



\$177,278

Median Home Value



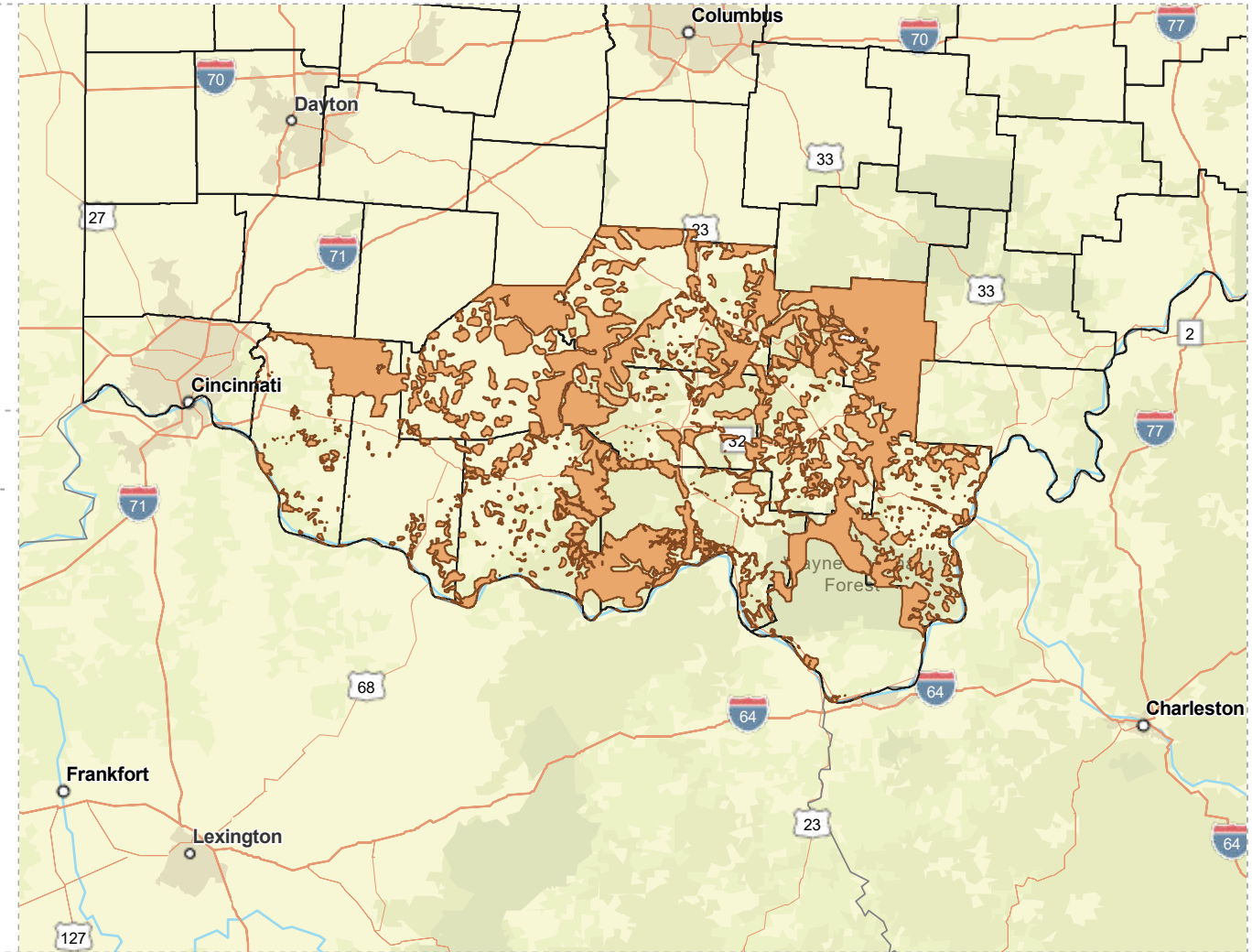
89%

Household Owns or Leases Any Vehicle



23%

Household Spent \$1-\$99 in Average Week at Food Stores



# ADAMS COUNTY WITH PUBLIC WATER ACCESS

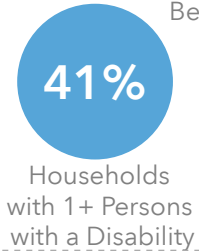
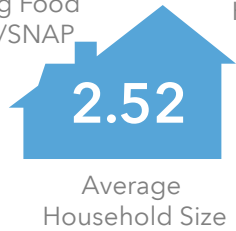
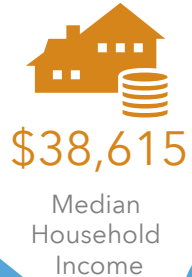
Adams\_Co\_With\_Water  
Area: 437.5 square miles

Source: Generalized drinking water coverage data overlay with U.S. Census Bureau, Census 2010 Summary File 1. Esri forecasts for 2021 and 2026. All survey-based estimates are subject to sampling error. The calculated population displayed with Census data measures the variability of the estimates.

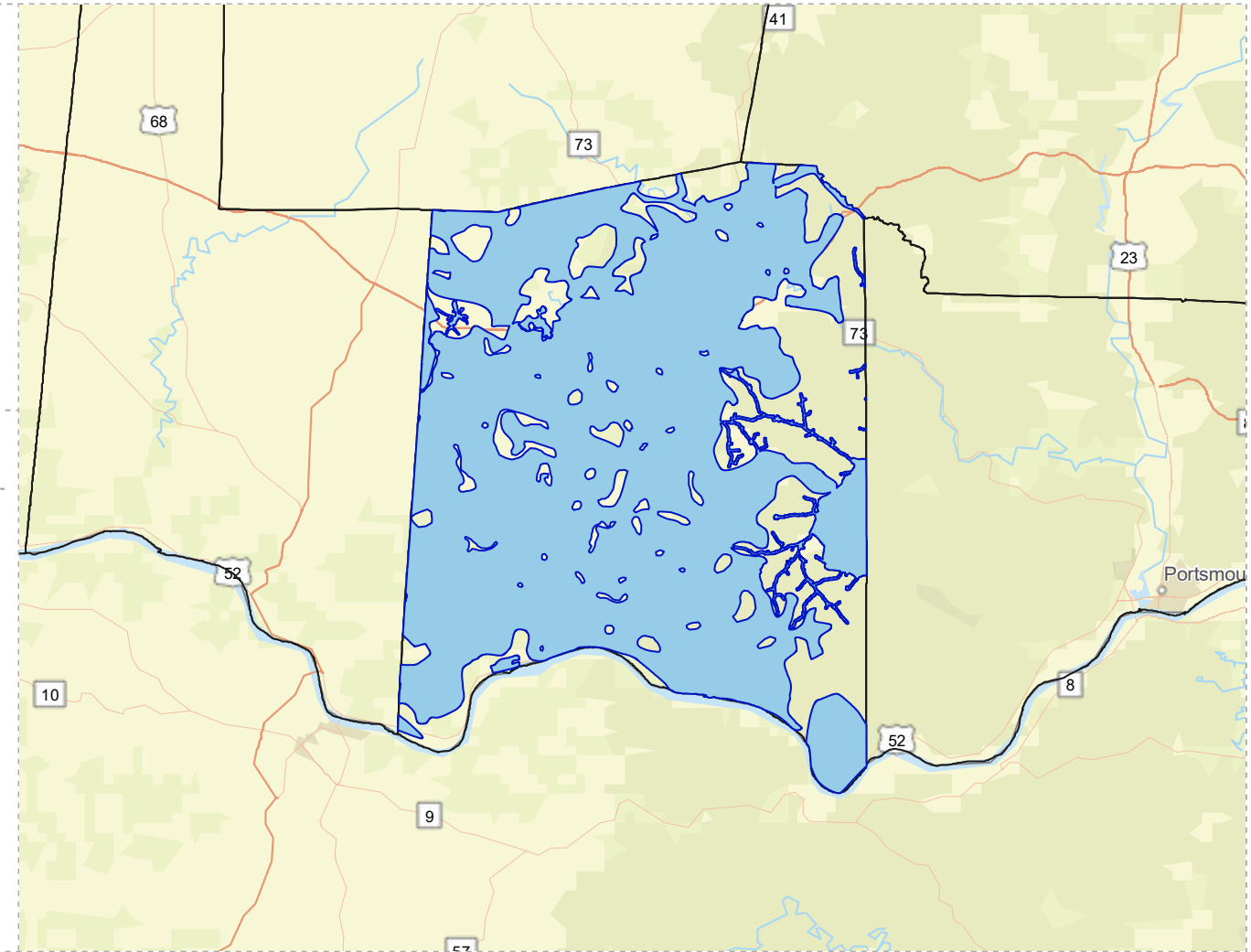
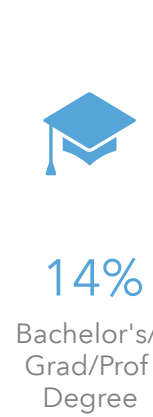
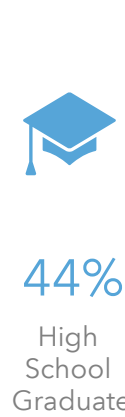
## POPULATION



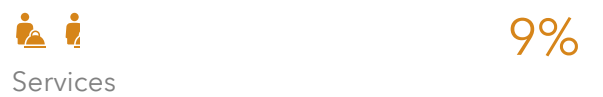
## INCOME



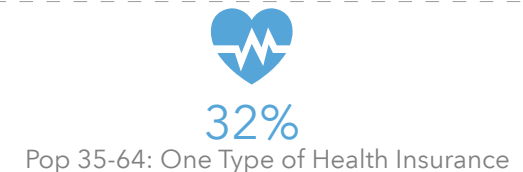
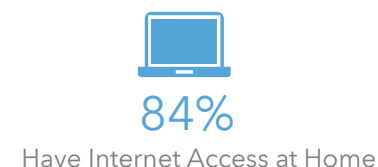
## EDUCATION



## EMPLOYMENT



## MISCELLANEOUS FACTS



# ADAMS COUNTY WITHOUT PUBLIC WATER ACCESS

Adams\_Co\_Without\_Water

Area: 148.75 square miles

Source: Generalized drinking water coverage data overlay with U.S. Census Bureau, Census 2010 Summary File 1. Esri forecasts for 2021 and 2026. All survey-based estimates are subject to sampling error. The calculated population displayed with Census data measures the variability of the estimates.

## POPULATION



4,467

Total Population



42.2

Median Age

## INCOME



21%

Households Receiving Food Stamps/SNAP



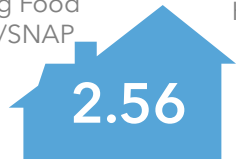
\$39,905

Median Household Income



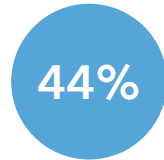
21%

Households Below the Poverty Level



2.56

Average Household Size



44%

Households with 1+ Persons with a Disability

## EMPLOYMENT



53%

White Collar



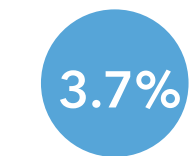
38%

Blue Collar



Services

10%



3.7%  
Unemployment Rate

## EDUCATION



19%  
No High School Diploma



46%

High School Graduate



22%

Some College



13%

Bachelor's/ Grad/Prof Degree

## MISCELLANEOUS FACTS



84%

Have Internet Access at Home



\$444

Average Household Cost of Water & Sewer Maintenance (per year)



33%

Pop 35-64: One Type of Health Insurance



\$140,966

Median Home Value



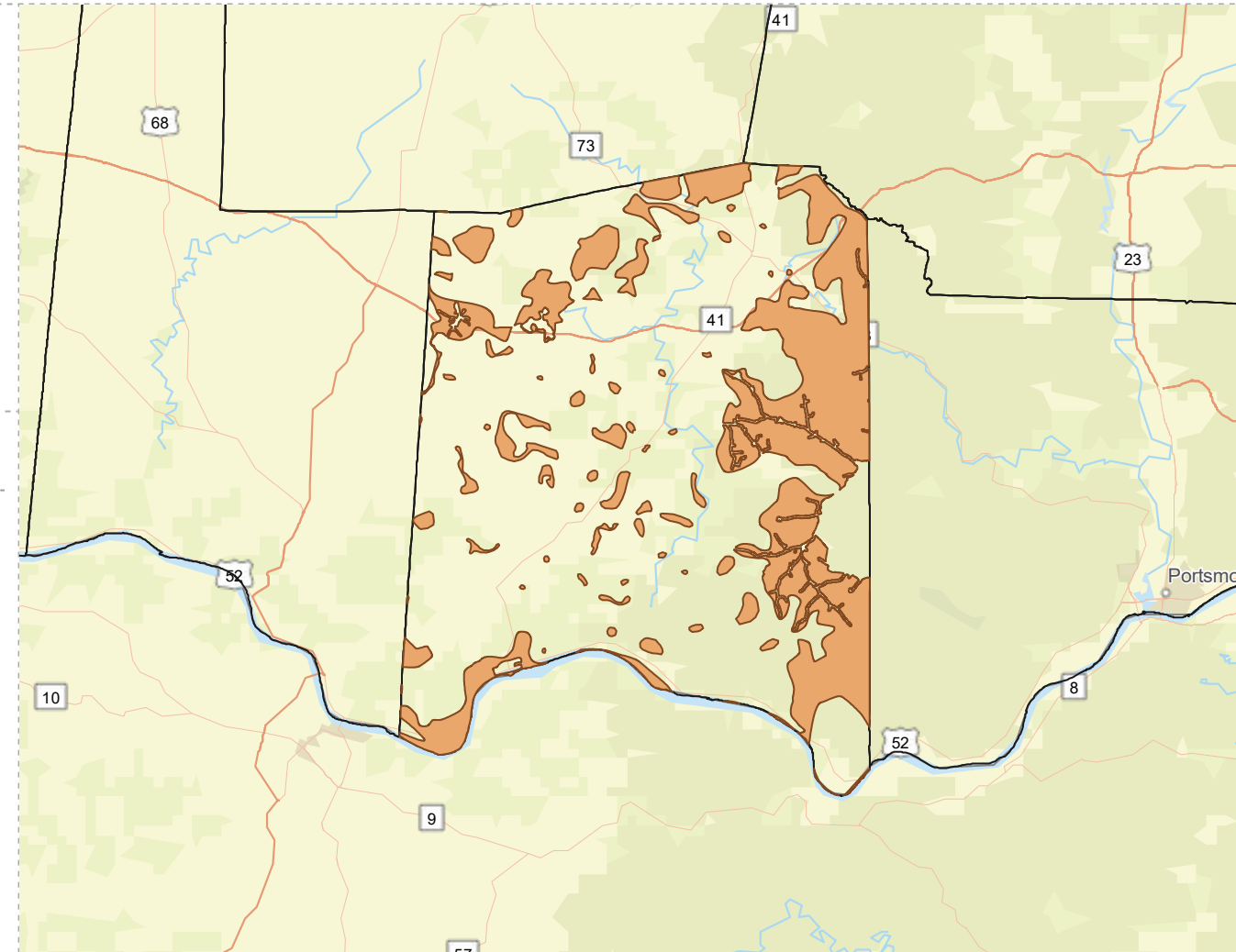
87%

Household Owns or Leases Any Vehicle



25%

Household Spent \$1-\$99 in Average Week at Food Stores





# BROWN COUNTY WITH PUBLIC WATER ACCESS

Brown\_Co\_With\_Water  
Area: 409.8 square miles

Source: Generalized drinking water coverage data overlay with U.S. Census Bureau, Census 2010 Summary File 1. Esri forecasts for 2021 and 2026. All survey-based estimates are subject to sampling error. The calculated population displayed with Census data measures the variability of the estimates.

## POPULATION



**40,188**  
Total Population



Median Age

## INCOME



**14%**

Households Receiving Food Stamps/SNAP



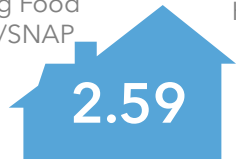
**\$52,282**

Median Household Income

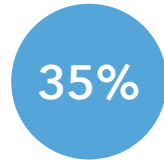


**15%**

Households Below the Poverty Level



Average Household Size



Households with 1+ Persons with a Disability

## EMPLOYMENT



**54%**

White Collar



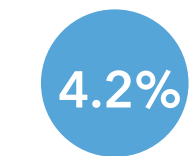
**33%**

Blue Collar



Services

**13%**



Unemployment Rate

**42.3**

Median Age

## EDUCATION

**12%**

No High School Diploma



**45%**

High School Graduate



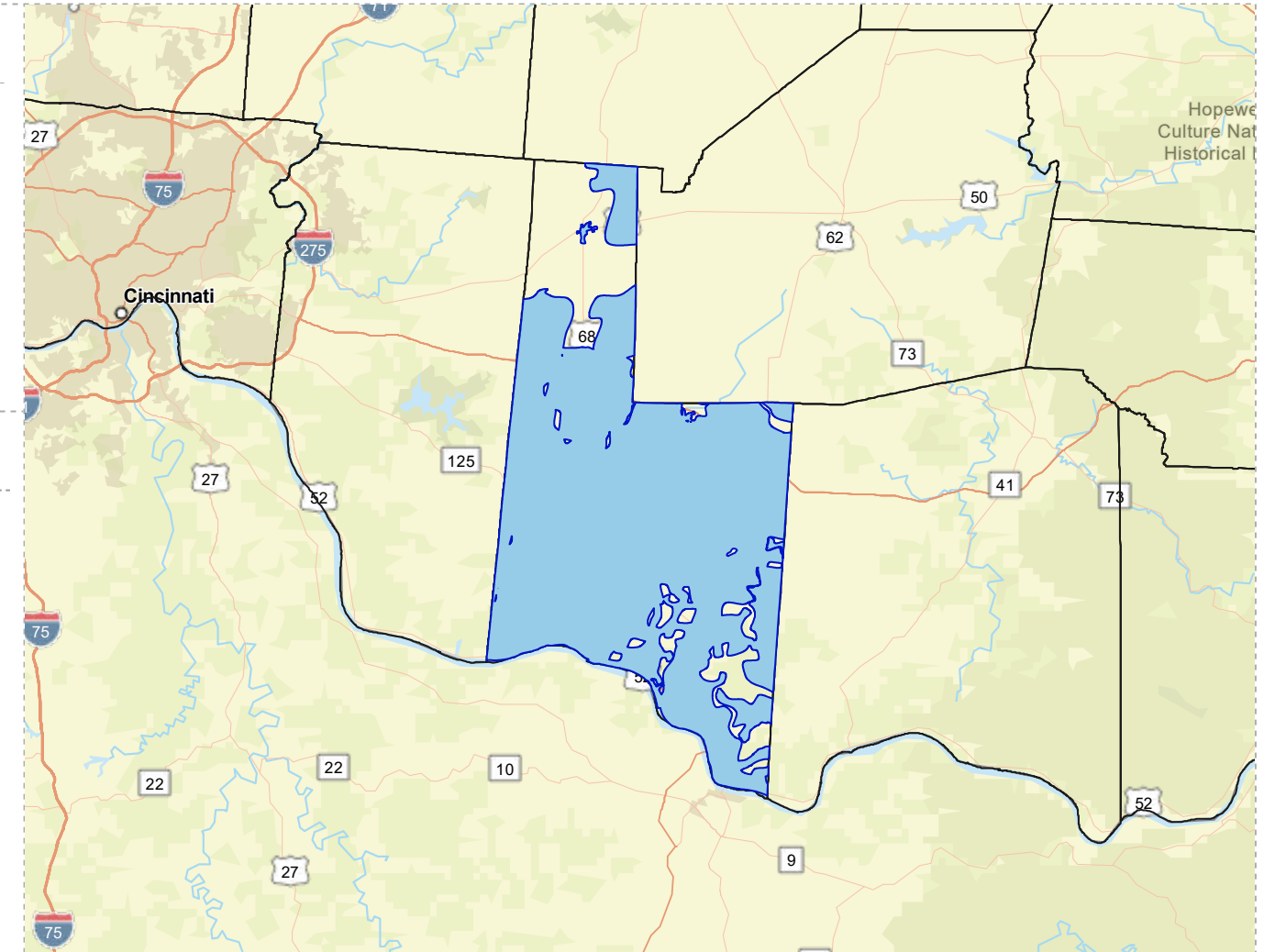
**27%**

Some College



**16%**

Bachelor's/ Grad/Prof Degree



## MISCELLANEOUS FACTS



**87%**

Have Internet Access at Home



**\$511**

Average Household Cost of Water & Sewer Maintenance (per year)



**33%**

Pop 35-64: One Type of Health Insurance



**\$196,036**

Median Home Value



**90%**

Household Owns or Leases Any Vehicle



**23%**

Household Spent \$1-\$99 in Average Week at Food Stores

# BROWN COUNTY WITHOUT PUBLIC WATER ACCESS

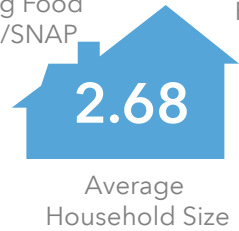
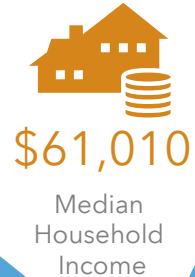
Brown\_Co\_Without\_Water  
Area: 83.65 square miles

Source: Generalized drinking water coverage data overlay with U.S. Census Bureau, Census 2010 Summary File 1. Esri forecasts for 2021 and 2026. All survey-based estimates are subject to sampling error. The calculated population displayed with Census data measures the variability of the estimates.

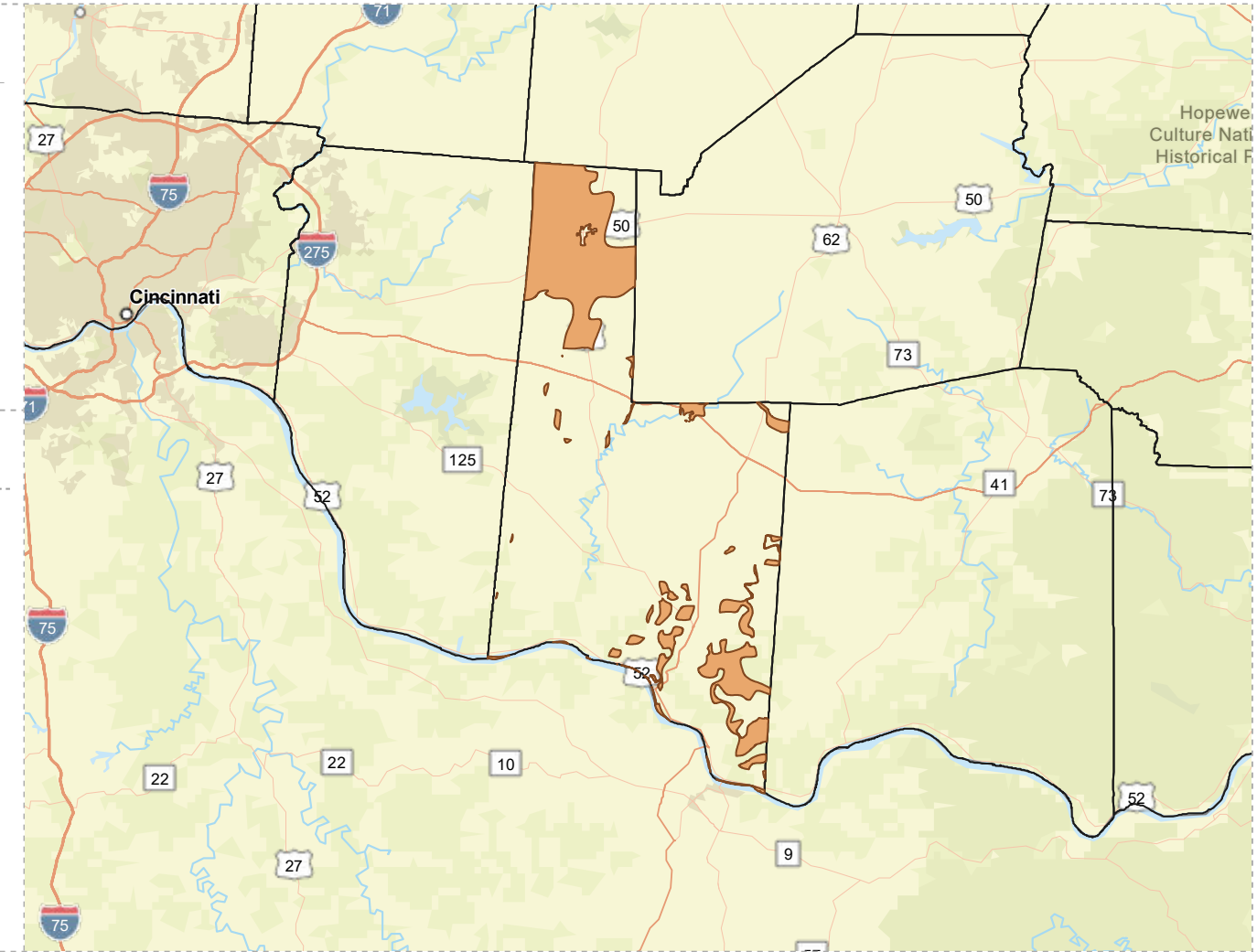
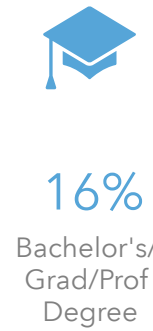
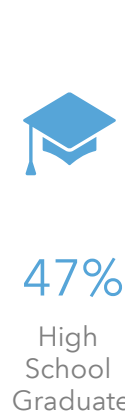
## POPULATION



## INCOME



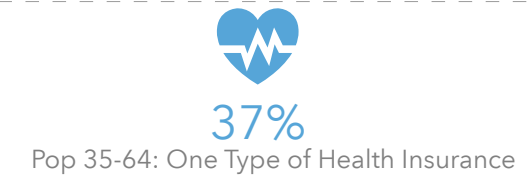
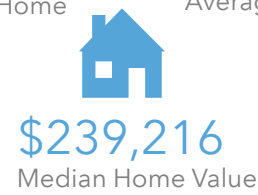
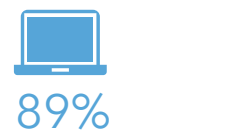
## EDUCATION



## EMPLOYMENT



## MISCELLANEOUS FACTS

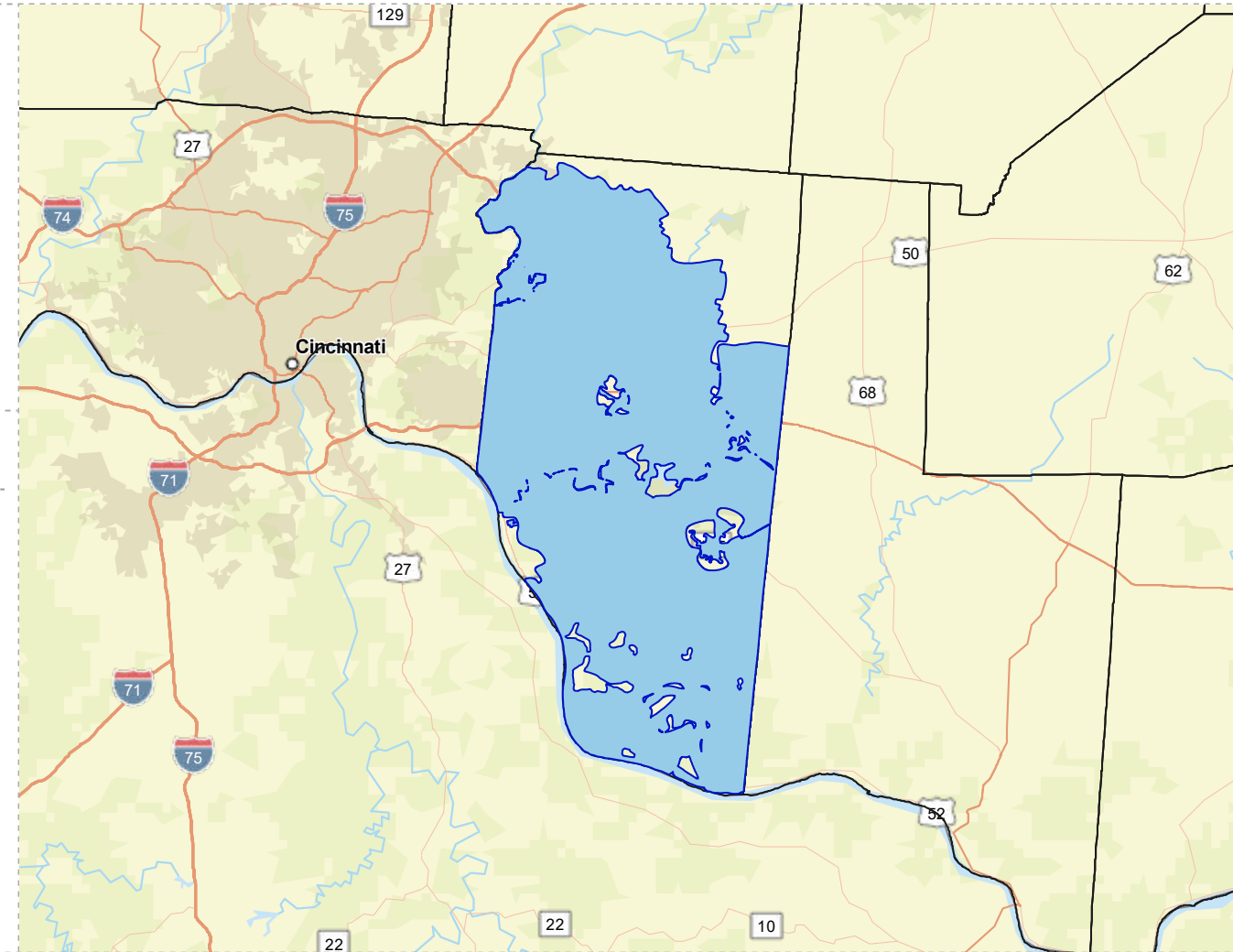


# CLERMONT COUNTY WITH PUBLIC WATER ACCESS

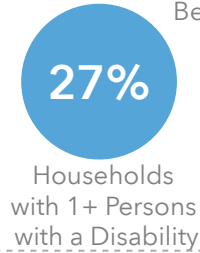
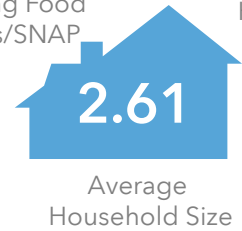
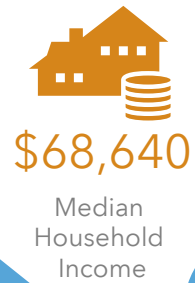
Clermont\_Co\_With\_Water  
Area: 378.16 square miles

Source: Generalized drinking water coverage data overlay with U.S. Census Bureau, Census 2010 Summary File 1. Esri forecasts for 2021 and 2026. All survey-based estimates are subject to sampling error. The calculated population displayed with Census data measures the variability of the estimates.

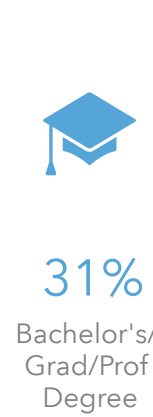
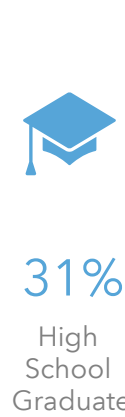
## POPULATION



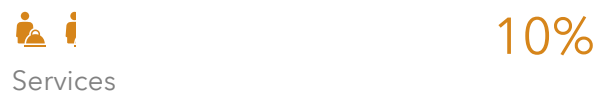
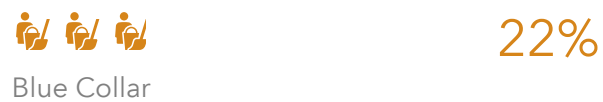
## INCOME



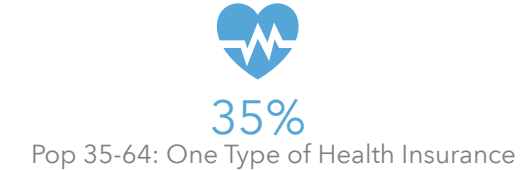
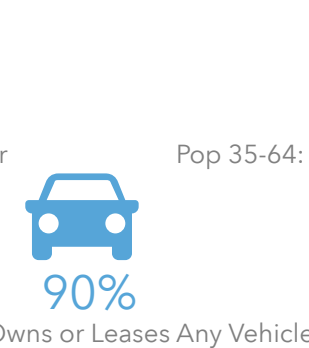
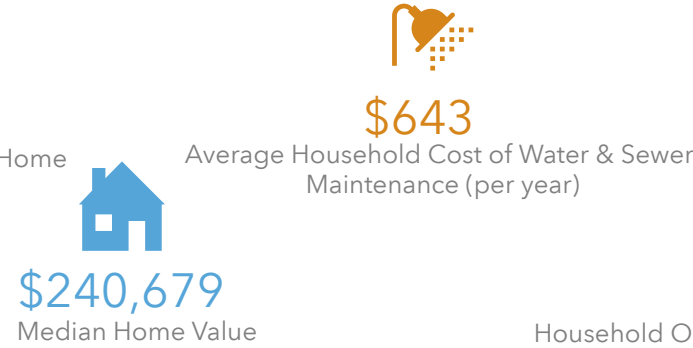
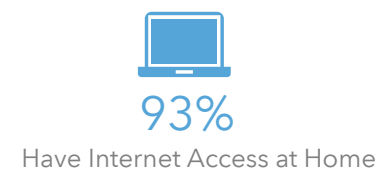
## EDUCATION



## EMPLOYMENT



## MISCELLANEOUS FACTS





# CLERMONT COUNTY WITHOUT PUBLIC WATER ACCESS

Clermont\_Co\_Without\_Water

Area: 81.61 square miles

Source: Generalized drinking water coverage data overlay with U.S. Census Bureau, Census 2010 Summary File 1. Esri forecasts for 2021 and 2026. All survey-based estimates are subject to sampling error. The calculated population displayed with Census data measures the variability of the estimates.

## POPULATION



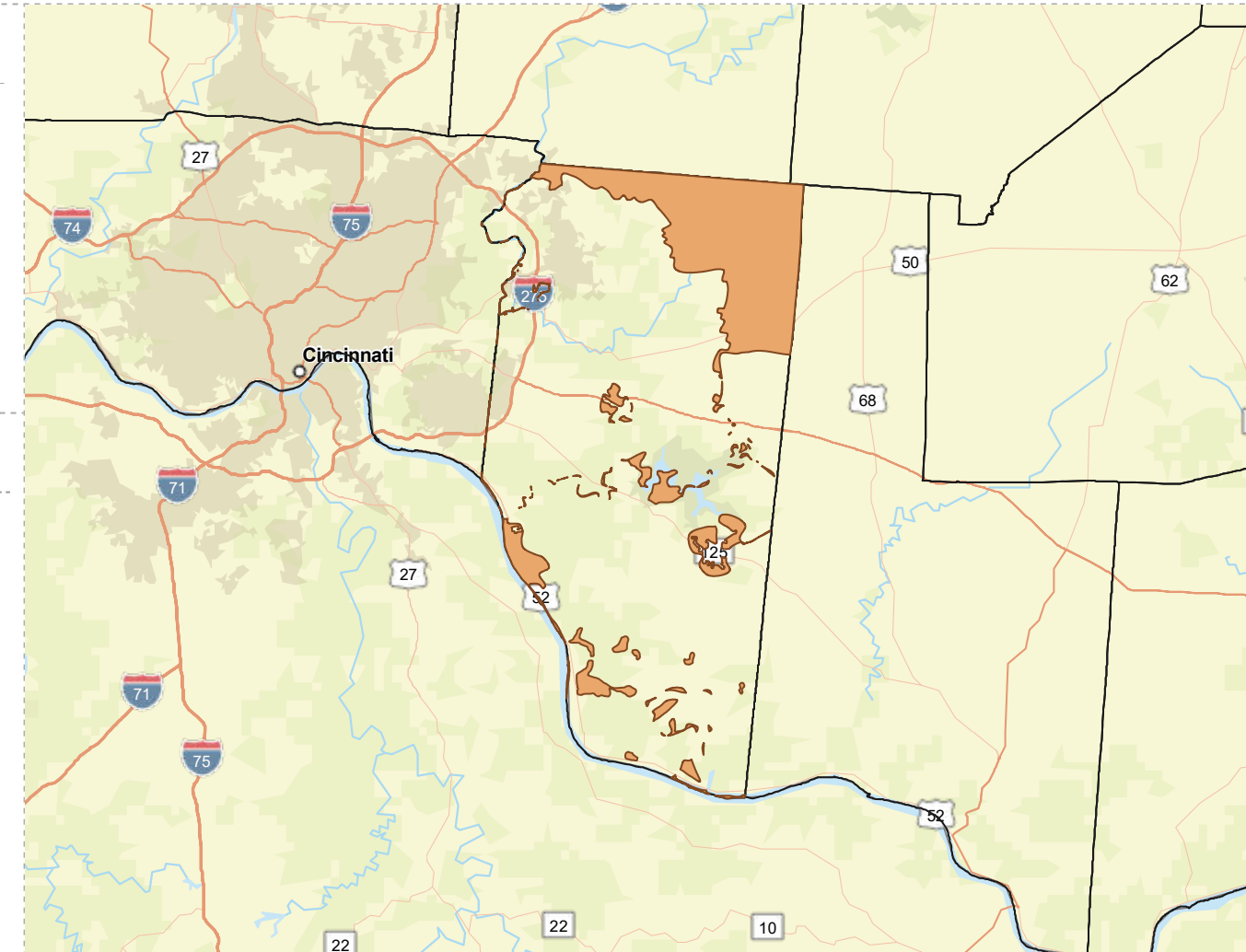
15,928

Total Population



42.8

Median Age



## INCOME



10%

Households Receiving Food Stamps/SNAP



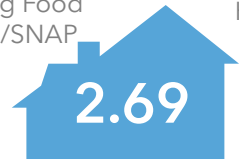
\$63,140

Median Household Income



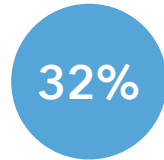
9%

Households Below the Poverty Level



2.69

Average Household Size



32%

Households with 1+ Persons with a Disability

## EMPLOYMENT



59%

White Collar



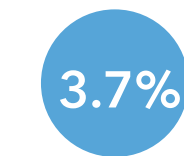
30%

Blue Collar



Services

11%



3.7%  
Unemployment Rate

## EDUCATION



13%  
No High School Diploma



40%

High School Graduate



27%

Some College



21%

Bachelor's/ Grad/Prof Degree

## MISCELLANEOUS FACTS



91%

Have Internet Access at Home



\$611

Average Household Cost of Water & Sewer Maintenance (per year)



36%

Pop 35-64: One Type of Health Insurance



\$259,091

Median Home Value



92%

Household Owns or Leases Any Vehicle



20%

Household Spent \$1-\$99 in Average Week at Food Stores

# GALLIA COUNTY WITH PUBLIC WATER ACCESS

Gallia\_Co\_With\_Water\_Merge

Area: 316.13 square miles

Source: Generalized drinking water coverage data overlay with U.S. Census Bureau, Census 2010 Summary File 1. Esri forecasts for 2021 and 2026. All survey-based estimates are subject to sampling error. The calculated population displayed with Census data measures the variability of the estimates.

## POPULATION



25,734

Total Population



41.7

Median Age

## INCOME



20%

Households Receiving Food Stamps/SNAP



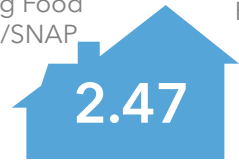
\$48,802

Median Household Income



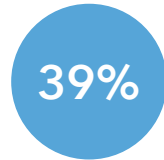
19%

Households Below the Poverty Level



2.47

Average Household Size



39%

Households with 1+ Persons with a Disability

## EMPLOYMENT



59%

White Collar



29%

Blue Collar



Services

12%



3.6%

Unemployment Rate

## EDUCATION



15%

No High School Diploma



40%

High School Graduate



28%

Some College



17%

Bachelor's/ Grad/Prof Degree

## MISCELLANEOUS FACTS



86%

Have Internet Access at Home



\$476

Average Household Cost of Water & Sewer Maintenance (per year)



32%

Pop 35-64: One Type of Health Insurance



\$160,016

Median Home Value



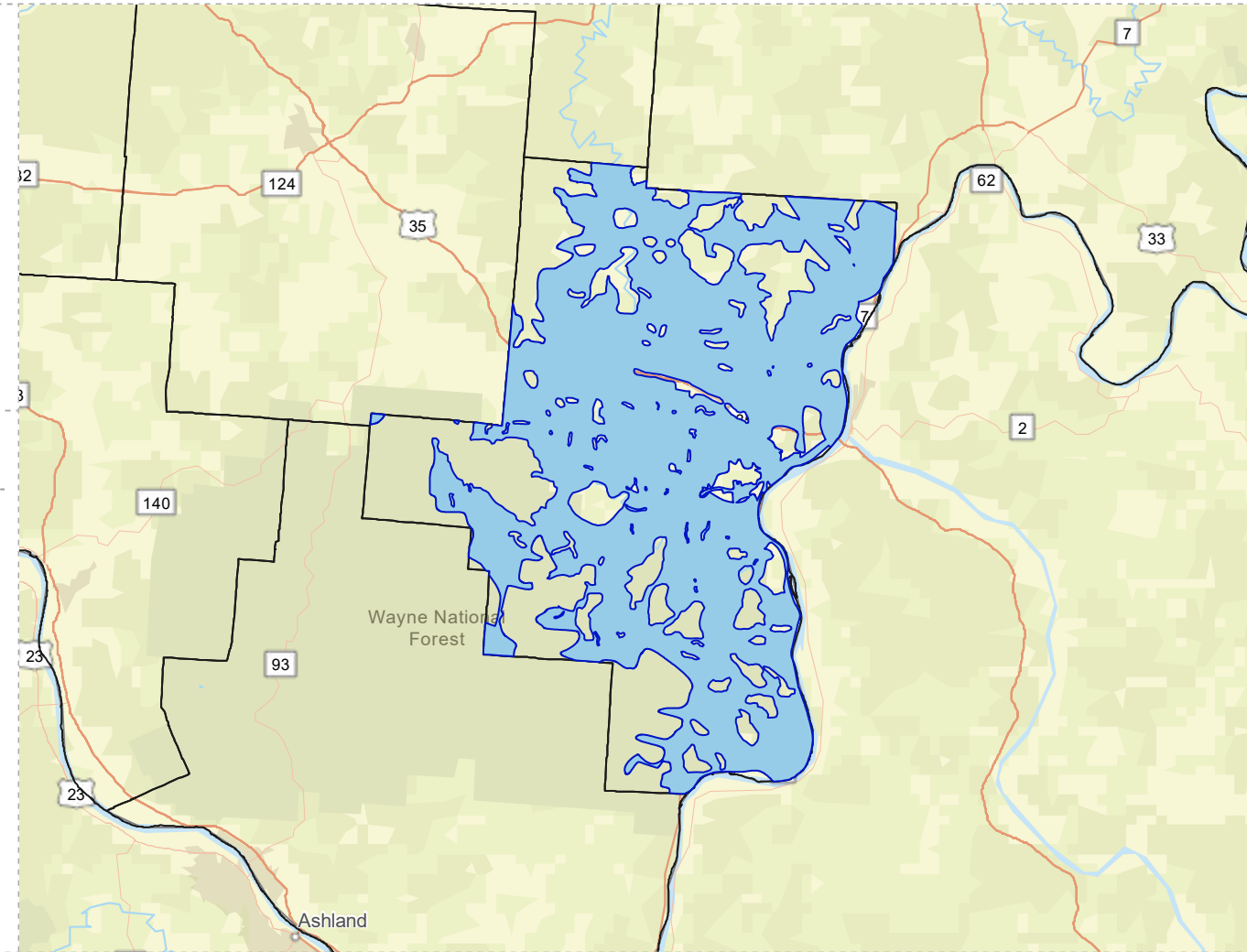
89%

Household Owns or Leases Any Vehicle



24%

Household Spent \$1-\$99 in Average Week at Food Stores



# GALLIA COUNTY WITHOUT PUBLIC WATER ACCESS

Gallia\_Co\_Without\_Water\_Merge

Area: 155.07 square miles



Voinovich School of Leadership and Public Service

Source: Generalized drinking water coverage data overlay with U.S. Census Bureau, Census 2010 Summary File 1. Esri forecasts for 2021 and 2026. All survey-based estimates are subject to sampling error. The calculated population displayed with Census data measures the variability of the estimates.

## POPULATION



4,855

Total Population



Median Age

## INCOME



16%

Households Receiving Food Stamps/SNAP



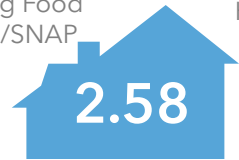
\$50,582

Median Household Income

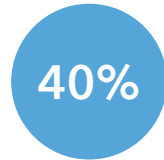


18%

Households Below the Poverty Level



Average Household Size



Households with 1+ Persons with a Disability

## EDUCATION



No High School Diploma



42%

High School Graduate



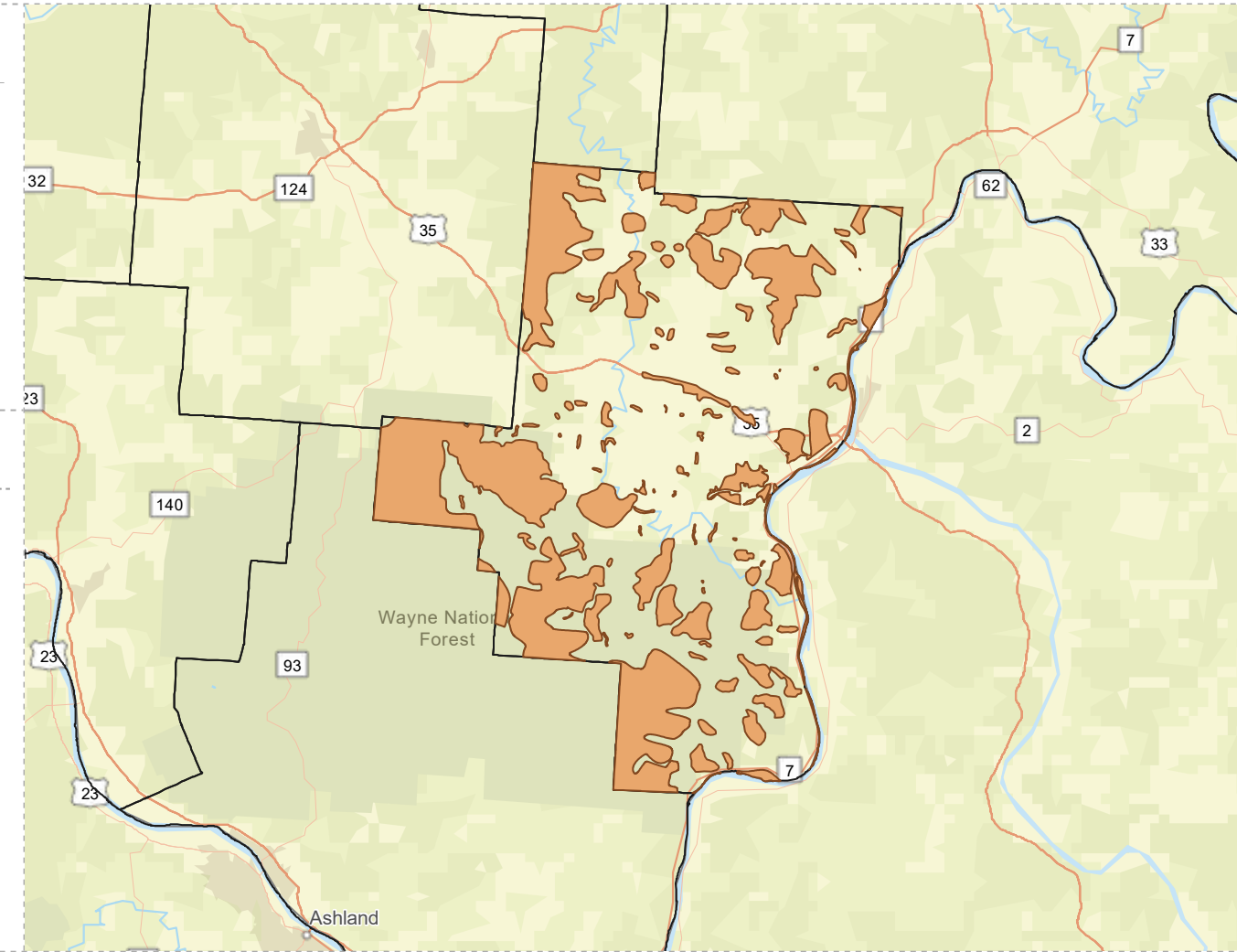
25%

Some College



17%

Bachelor's/ Grad/Prof Degree



## EMPLOYMENT



53%

White Collar



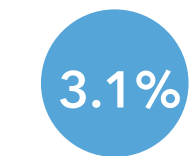
36%

Blue Collar



Services

11%



Unemployment Rate

## MISCELLANEOUS FACTS



87%

Have Internet Access at Home



\$487

Average Household Cost of Water & Sewer Maintenance (per year)



31%

Pop 35-64: One Type of Health Insurance



\$161,358

Median Home Value



91%

Household Owns or Leases Any Vehicle



23%

Household Spent \$1-\$99 in Average Week at Food Stores



# HIGHLAND COUNTY WITH PUBLIC WATER ACCESS

Highland\_Co\_With\_Water

Area: 329.11 square miles



Voinovich School of Leadership and Public Service

Source: Generalized drinking water coverage data overlay with U.S. Census Bureau, Census 2010 Summary File 1. Esri forecasts for 2021 and 2026. All survey-based estimates are subject to sampling error. The calculated population displayed with Census data measures the variability of the estimates.

## POPULATION



33,495

Total Population



41.3

Median Age

## INCOME



20%

Households Receiving Food Stamps/SNAP



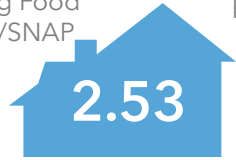
\$42,615

Median Household Income



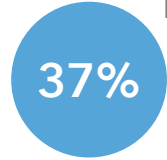
19%

Households Below the Poverty Level



2.53

Average Household Size



37%

Households with 1+ Persons with a Disability

## EMPLOYMENT



52%

White Collar



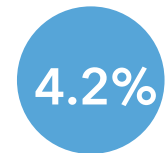
39%

Blue Collar



9%

Services



4.2%

Unemployment Rate

## EDUCATION



14%

No High School Diploma



45%

High School Graduate



26%

Some College



15%

Bachelor's/ Grad/Prof Degree

## MISCELLANEOUS FACTS



87%

Have Internet Access at Home



\$428

Average Household Cost of Water & Sewer Maintenance (per year)



31%

Pop 35-64: One Type of Health Insurance



\$142,562

Median Home Value



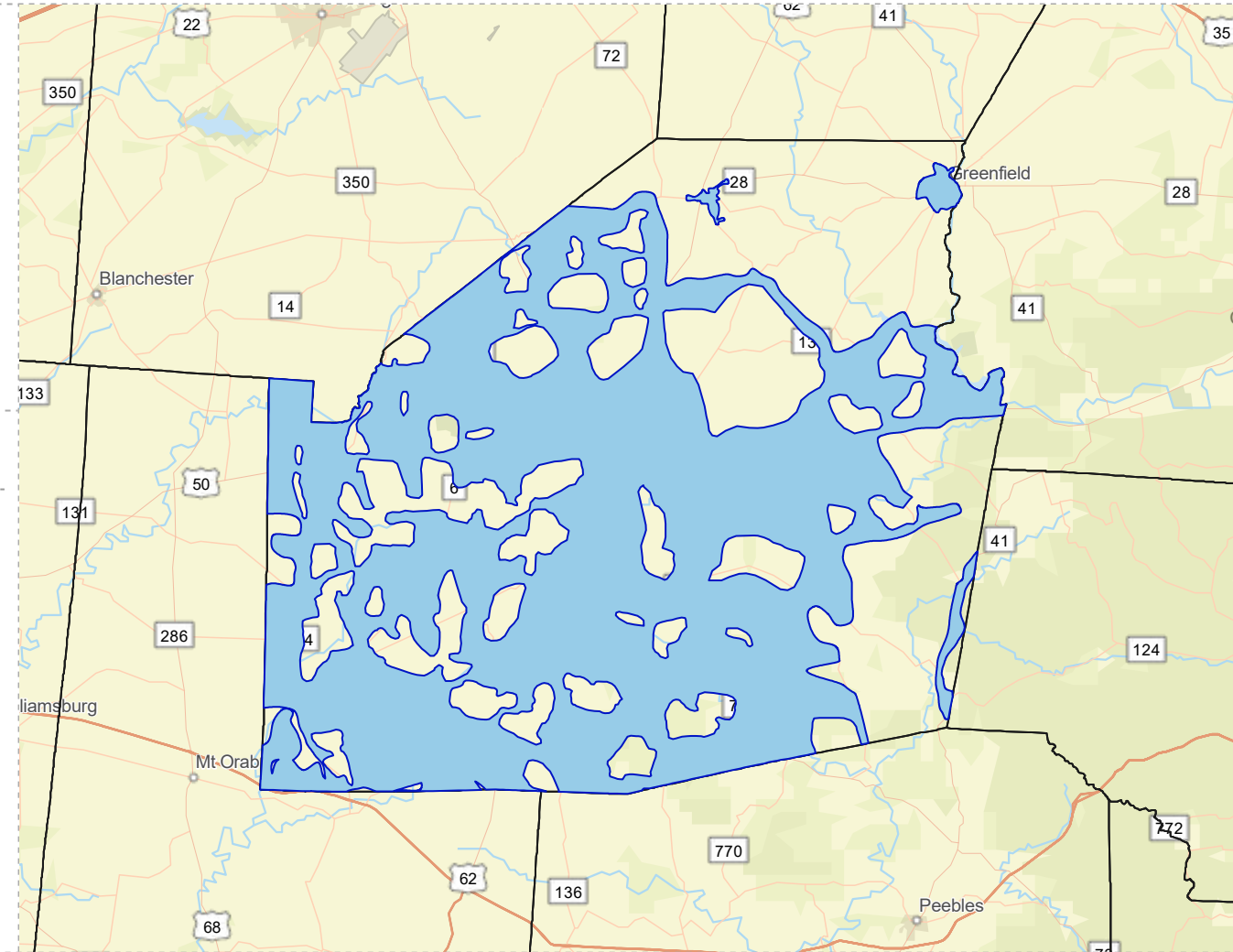
88%

Household Owns or Leases Any Vehicle



23%

Household Spent \$1-\$99 in Average Week at Food Stores



# HIGHLAND COUNTY WITHOUT PUBLIC WATER ACCESS

Highland\_Co\_Without\_Water

Area: 228.69 square miles



Voinovich School of Leadership and Public Service

Source: Generalized drinking water coverage data overlay with U.S. Census Bureau, Census 2010 Summary File 1. Esri forecasts for 2021 and 2026. All survey-based estimates are subject to sampling error. The calculated population displayed with Census data measures the variability of the estimates.

## POPULATION



10,292

Total Population



40.9

Median Age

## INCOME



14%

Households Receiving Food Stamps/SNAP



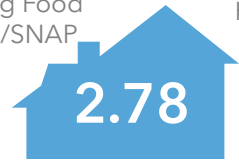
\$52,715

Median Household Income



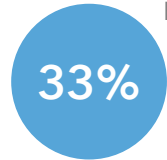
13%

Households Below the Poverty Level



2.78

Average Household Size



33%

Households with 1+ Persons with a Disability

## EMPLOYMENT



52%

White Collar



39%

Blue Collar



Services

10%



3.8%  
Unemployment Rate

## EDUCATION



14%  
No High School Diploma



46%

High School Graduate



26%

Some College



14%

Bachelor's/Grad/Prof Degree

## MISCELLANEOUS FACTS



88%

Have Internet Access at Home



\$492

Average Household Cost of Water & Sewer Maintenance (per year)



32%

Pop 35-64: One Type of Health Insurance



\$154,237

Median Home Value



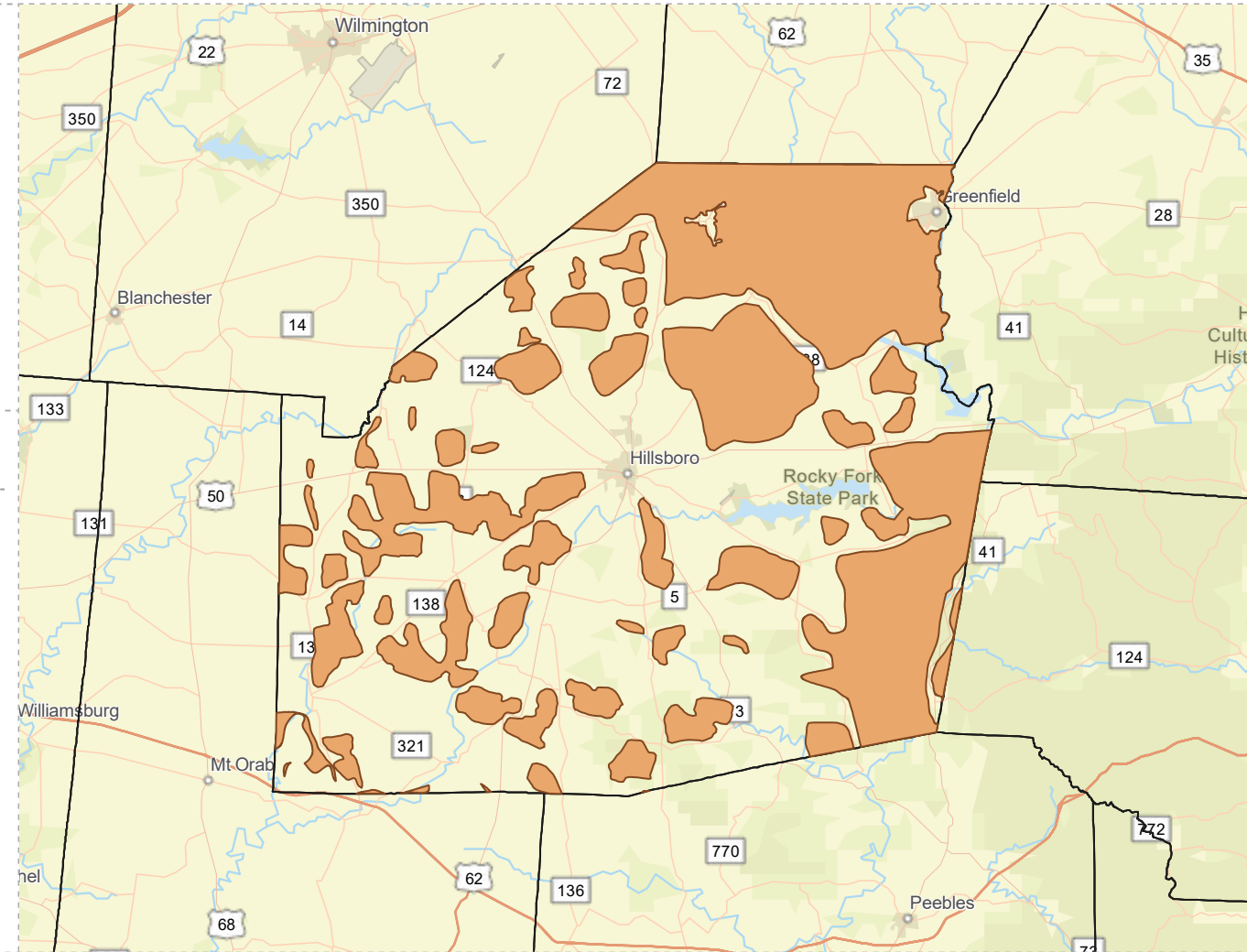
91%

Household Owns or Leases Any Vehicle



22%

Household Spent \$1-\$99 in Average Week at Food Stores



# JACKSON COUNTY WITH PUBLIC WATER ACCESS

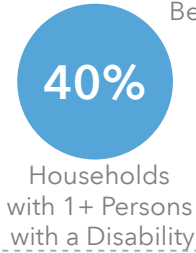
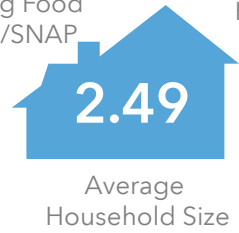
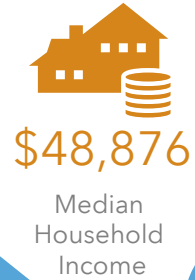
Jackson\_Co\_With\_Water  
Area: 274.7 square miles

Source: Generalized drinking water coverage data overlay with U.S. Census Bureau, Census 2010 Summary File 1. Esri forecasts for 2021 and 2026. All survey-based estimates are subject to sampling error. The calculated population displayed with Census data measures the variability of the estimates.

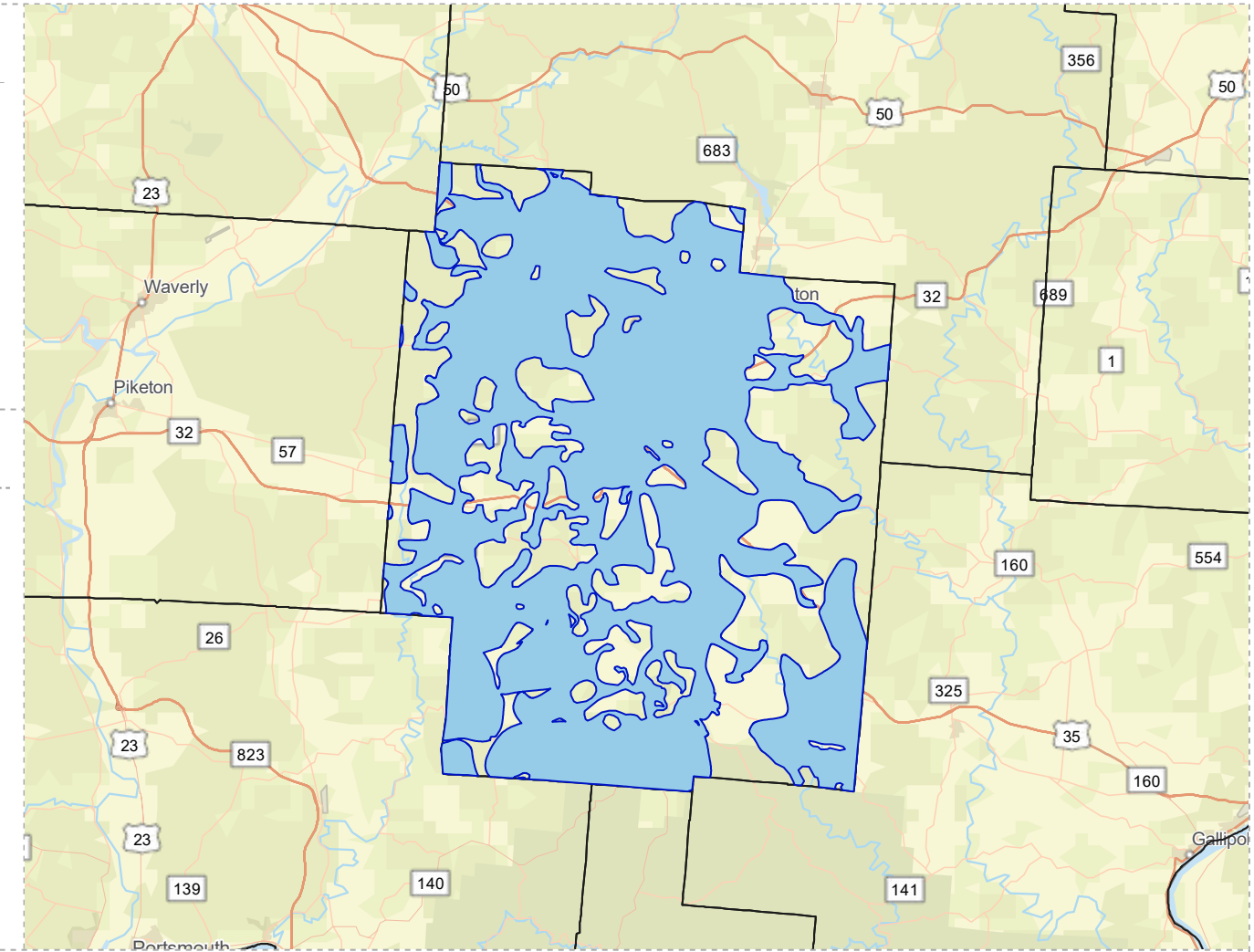
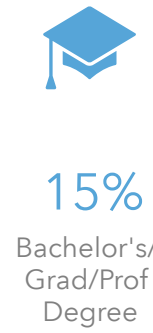
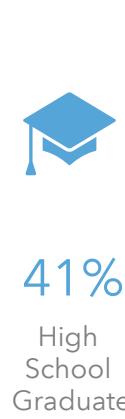
## POPULATION



## INCOME



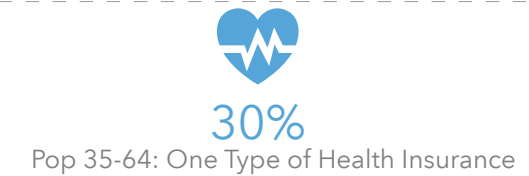
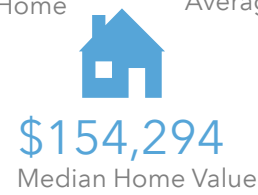
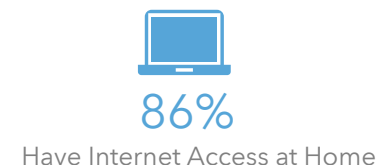
## EDUCATION



## EMPLOYMENT



## MISCELLANEOUS FACTS





# JACKSON COUNTY WITHOUT PUBLIC WATER ACCESS

Jackson\_Co\_Without\_Water

Area: 146.83 square miles



Voinovich School of Leadership and Public Service

Source: Generalized drinking water coverage data overlay with U.S. Census Bureau, Census 2010 Summary File 1. Esri forecasts for 2021 and 2026. All survey-based estimates are subject to sampling error. The calculated population displayed with Census data measures the variability of the estimates.

## POPULATION



6,173

Total Population



Median Age

## INCOME



16%

Households Receiving Food Stamps/SNAP



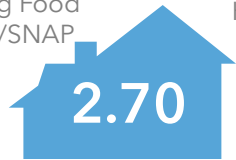
\$53,576

Median Household Income

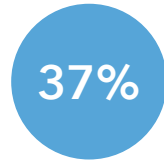


17%

Households Below the Poverty Level



Average Household Size



Households with 1+ Persons with a Disability

## EDUCATION



No High School Diploma



44%

High School Graduate



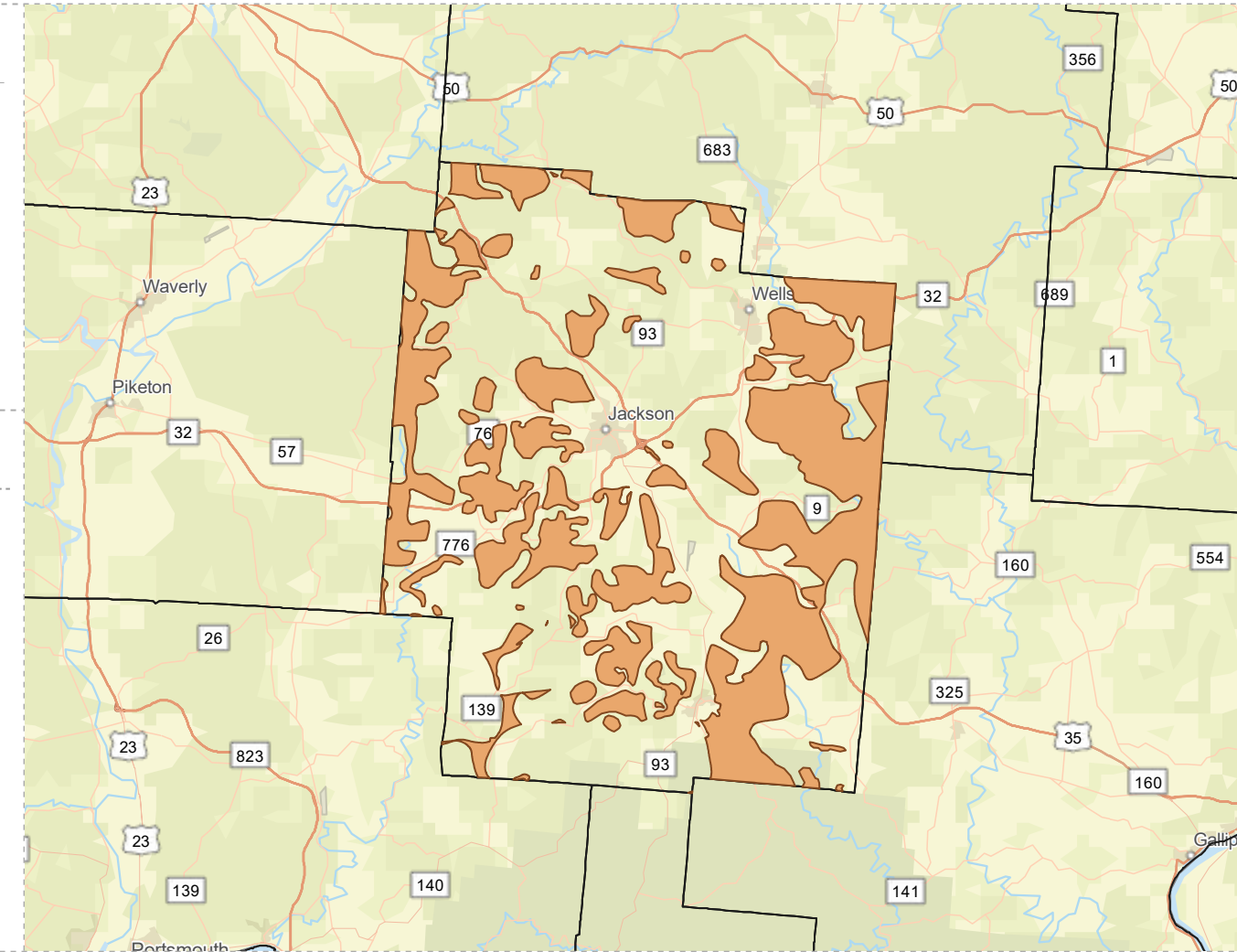
25%

Some College



16%

Bachelor's/ Grad/Prof Degree



## EMPLOYMENT



54%

White Collar



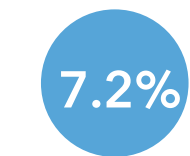
36%

Blue Collar



Services

10%



Unemployment Rate

## MISCELLANEOUS FACTS



87%

Have Internet Access at Home



\$507

Average Household Cost of Water & Sewer Maintenance (per year)



32%

Pop 35-64: One Type of Health Insurance



\$195,812

Median Home Value



90%

Household Owns or Leases Any Vehicle



23%

Household Spent \$1-\$99 in Average Week at Food Stores

# LAWRENCE COUNTY WITH PUBLIC WATER ACCESS

Lawrence\_Co\_With\_Water

Area: 404.72 square miles



Voinovich School of Leadership and Public Service

Source: Generalized drinking water coverage data overlay with U.S. Census Bureau, Census 2010 Summary File 1. Esri forecasts for 2021 and 2026. All survey-based estimates are subject to sampling error. The calculated population displayed with Census data measures the variability of the estimates.

## POPULATION



58,077

Total Population



42.9

Median Age

## INCOME



22%

Households Receiving Food Stamps/SNAP



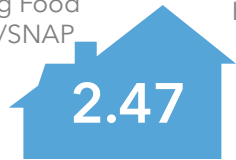
\$44,624

Median Household Income



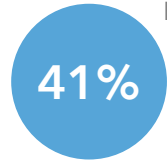
19%

Households Below the Poverty Level



2.47

Average Household Size



41%

Households with 1+ Persons with a Disability

## EMPLOYMENT



63%

White Collar



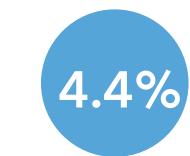
27%

Blue Collar



Services

11%



4.4%

Unemployment Rate

## EDUCATION



12%

No High School Diploma



43%

High School Graduate



29%

Some College



16%

Bachelor's/ Grad/Prof Degree

## MISCELLANEOUS FACTS



87%

Have Internet Access at Home



\$432

Average Household Cost of Water & Sewer Maintenance (per year)



32%

Pop 35-64: One Type of Health Insurance



\$176,665

Median Home Value



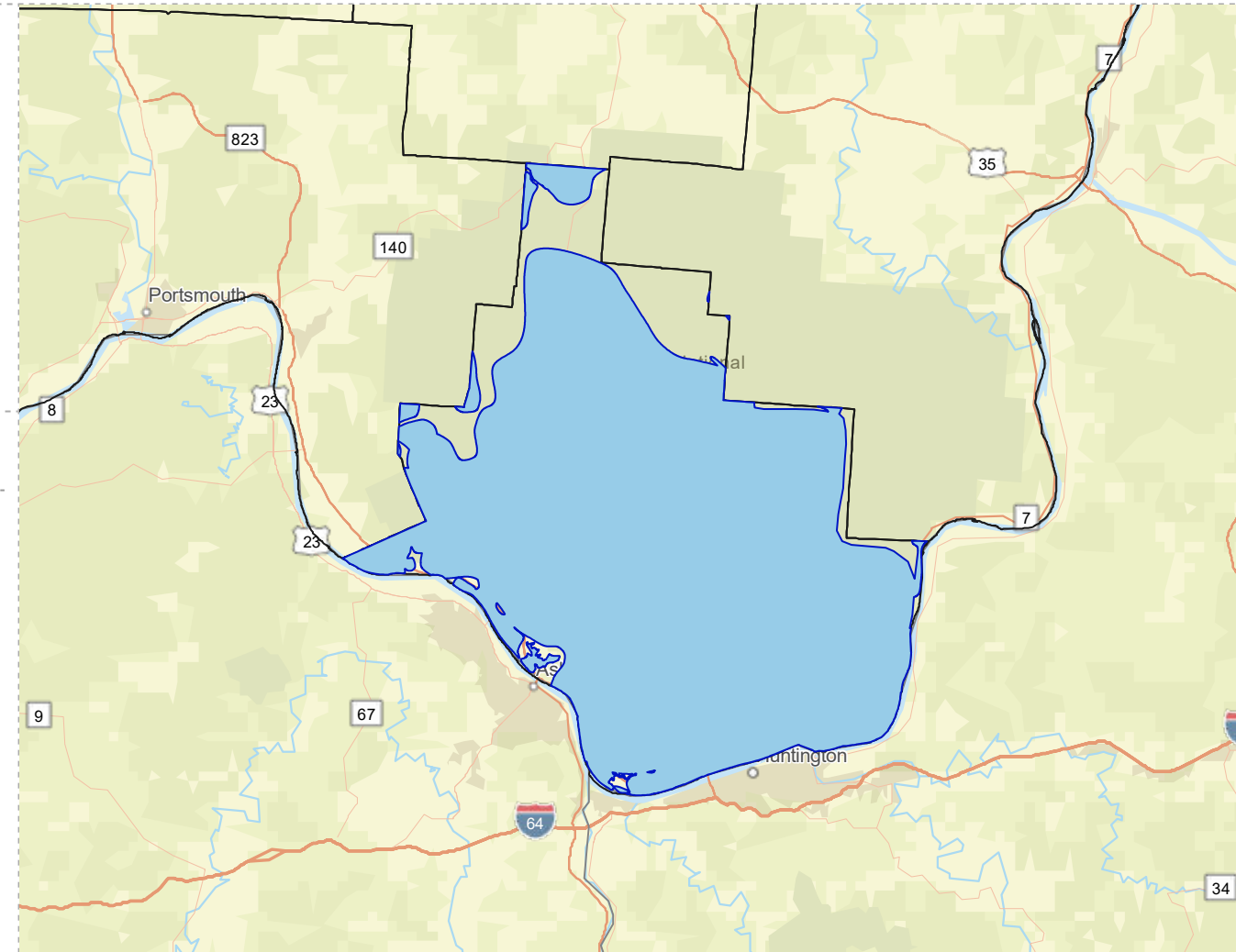
88%

Household Owns or Leases Any Vehicle



23%

Household Spent \$1-\$99 in Average Week at Food Stores



# LAWRENCE COUNTY WITHOUT PUBLIC WATER ACCESS

Lawrence\_Co\_Without\_Water

Area: 52.56 square miles



Voinovich School of Leadership and Public Service

Source: Generalized drinking water coverage data overlay with U.S. Census Bureau, Census 2010 Summary File 1. Esri forecasts for 2021 and 2026. All survey-based estimates are subject to sampling error. The calculated population displayed with Census data measures the variability of the estimates.

## POPULATION



2,766

Total Population



42.2

Median Age

## INCOME



18%

Households Receiving Food Stamps/SNAP



\$43,446

Median Household Income



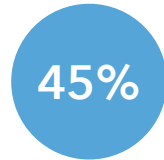
19%

Households Below the Poverty Level



2.60

Average Household Size



45%

Households with 1+ Persons with a Disability

## EMPLOYMENT



57%

White Collar



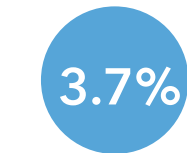
31%

Blue Collar



Services

12%



3.7%  
Unemployment Rate

## EDUCATION



14%

No High School Diploma



49%

High School Graduate



24%

Some College



13%

Bachelor's/ Grad/Prof Degree

## MISCELLANEOUS FACTS



86%

Have Internet Access at Home



\$450

Average Household Cost of Water & Sewer Maintenance (per year)



34%

Pop 35-64: One Type of Health Insurance



\$171,452

Median Home Value



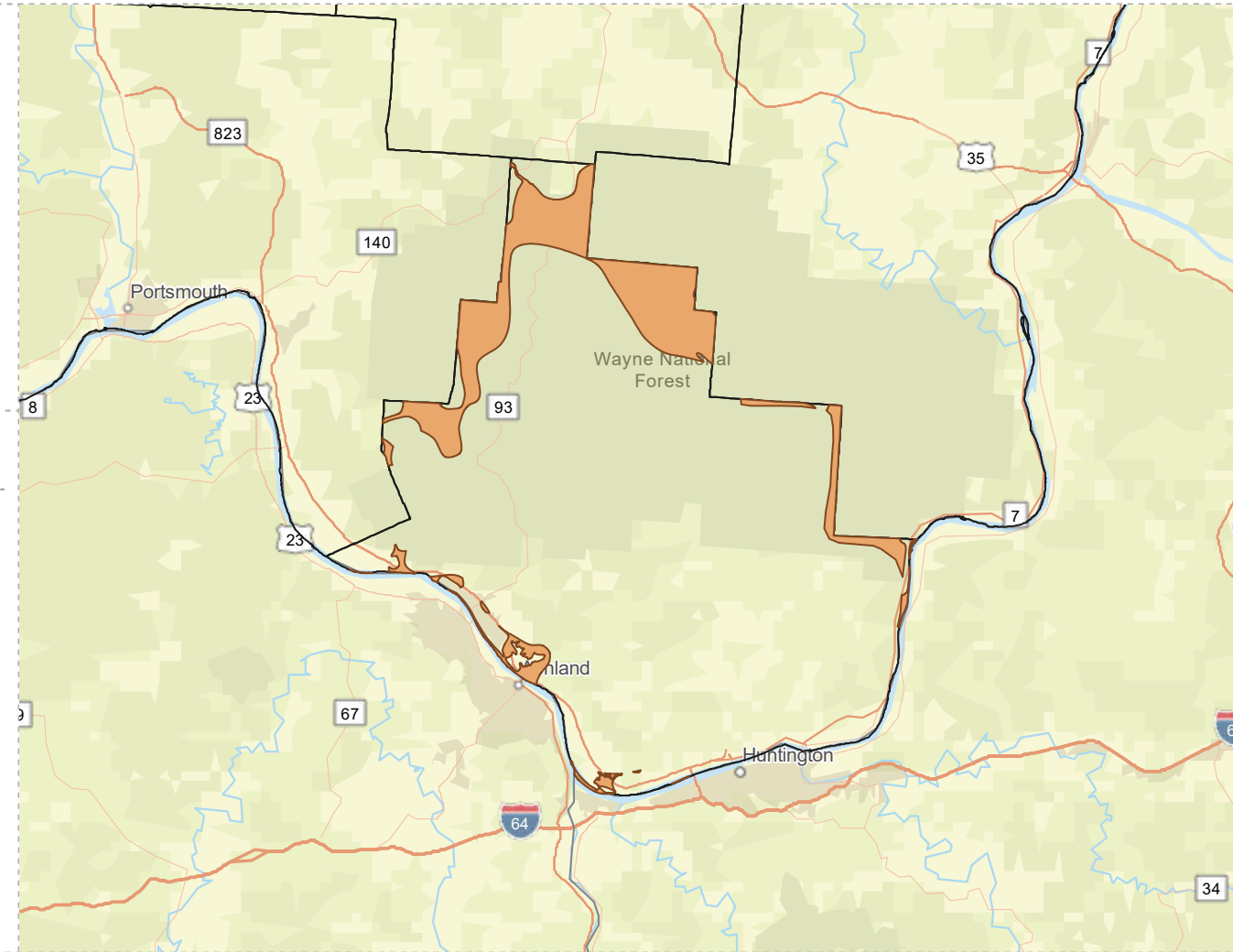
87%

Household Owns or Leases Any Vehicle



22%

Household Spent \$1-\$99 in Average Week at Food Stores





# PIKE COUNTY WITH PUBLIC WATER ACCESS

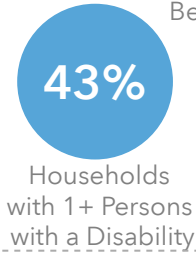
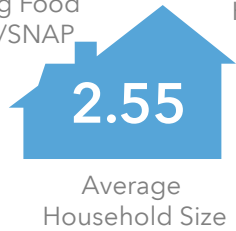
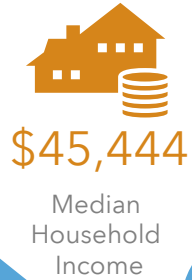
Pike\_Co\_With\_Water  
 Area: 316.36 square miles

Source: Generalized drinking water coverage data overlay with U.S. Census Bureau, Census 2010 Summary File 1. Esri forecasts for 2021 and 2026. All survey-based estimates are subject to sampling error. The calculated population displayed with Census data measures the variability of the estimates.

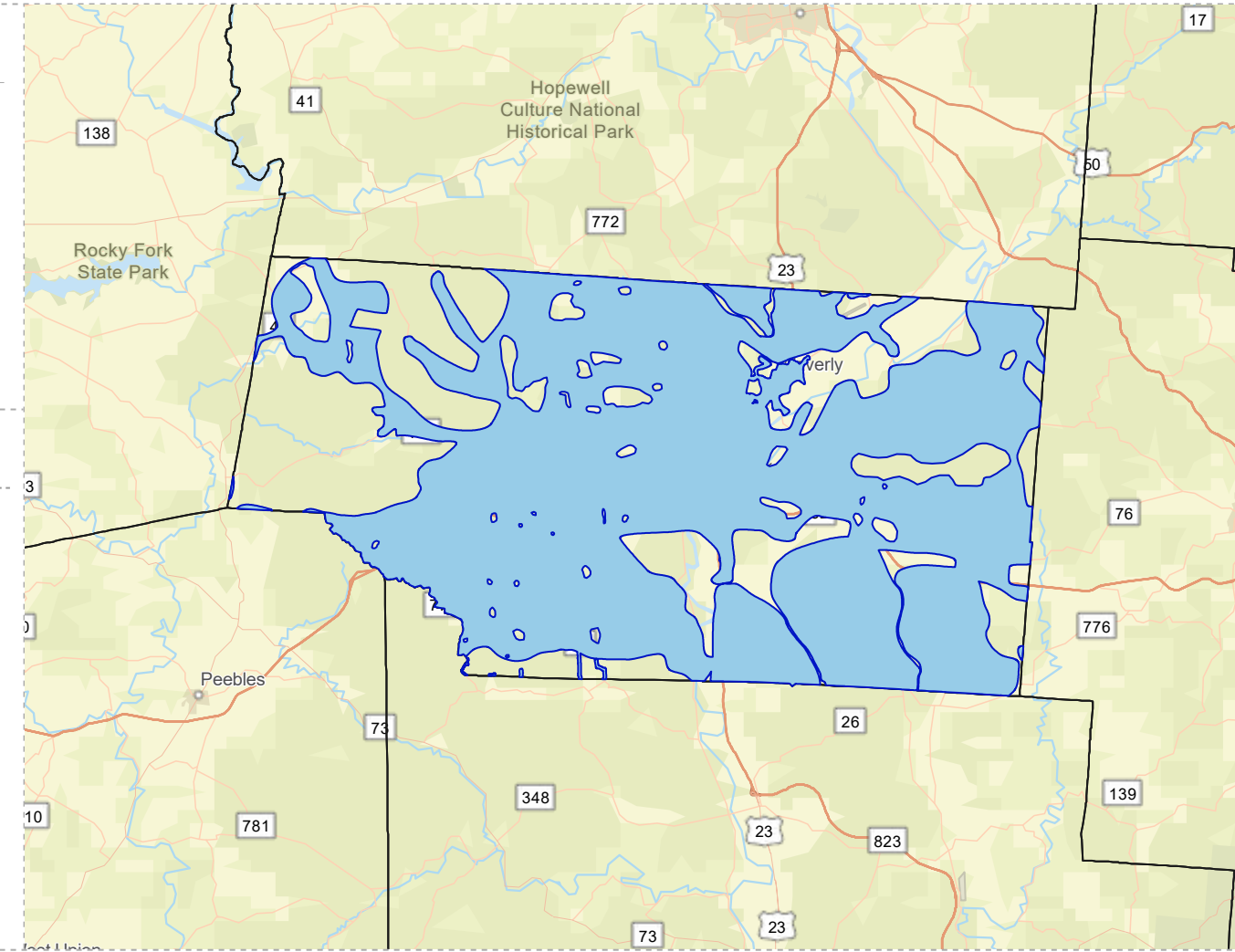
## POPULATION



## INCOME



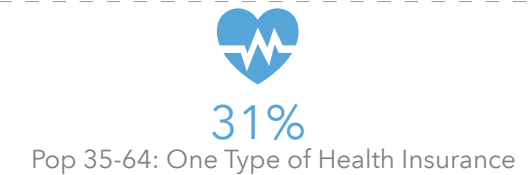
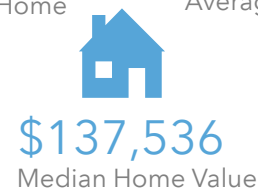
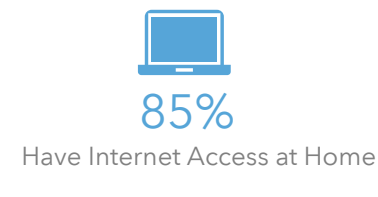
## EDUCATION



## EMPLOYMENT



## MISCELLANEOUS FACTS



# PIKE COUNTY WITHOUT PUBLIC WATER ACCESS

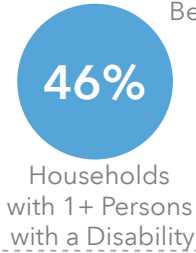
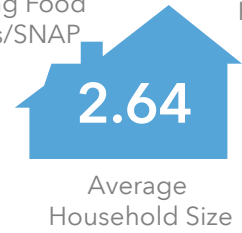
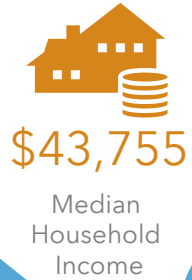
Pike\_Co\_Without\_Water  
Area: 127.62 square miles

Source: Generalized drinking water coverage data overlay with U.S. Census Bureau, Census 2010 Summary File 1. Esri forecasts for 2021 and 2026. All survey-based estimates are subject to sampling error. The calculated population displayed with Census data measures the variability of the estimates.

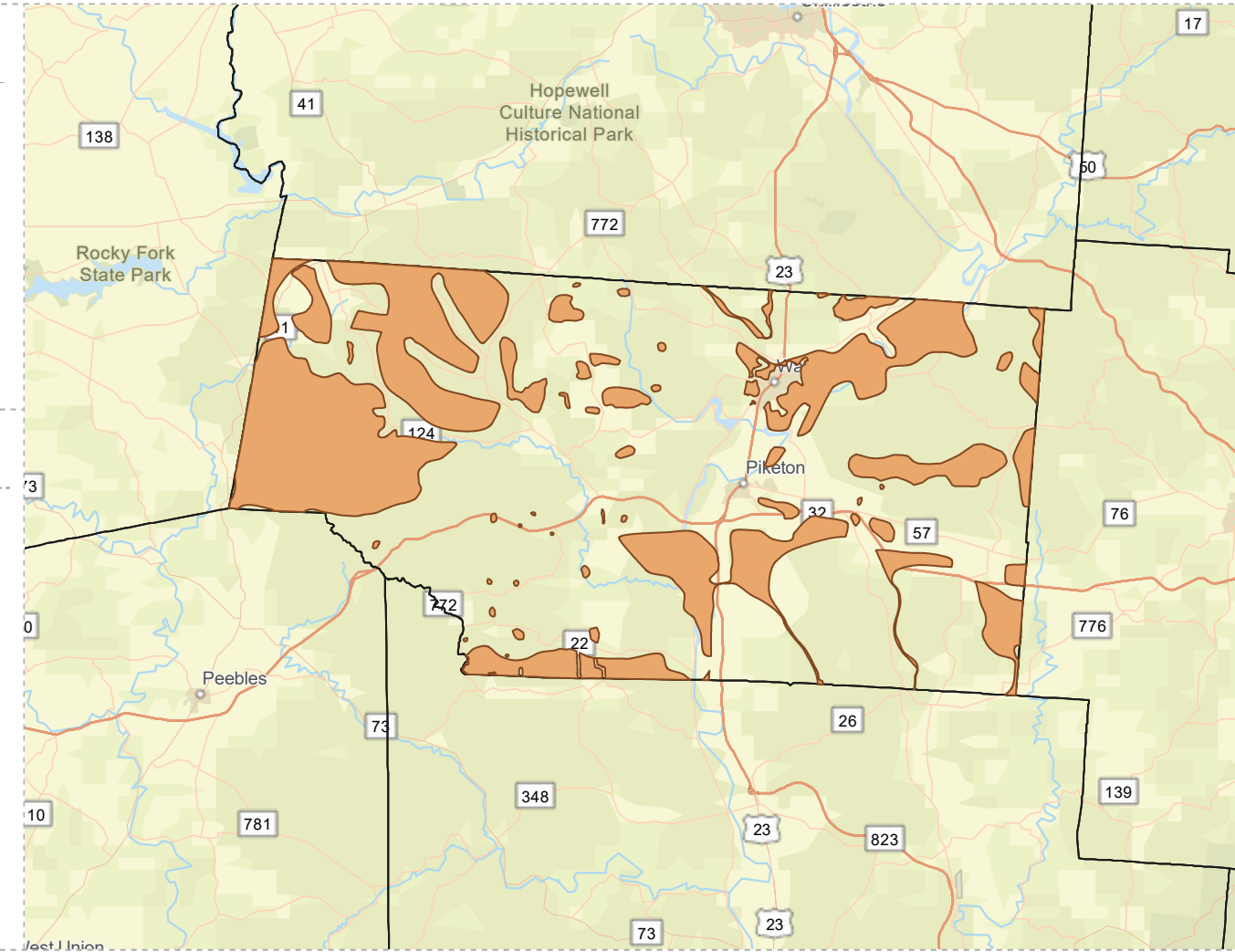
## POPULATION



## INCOME



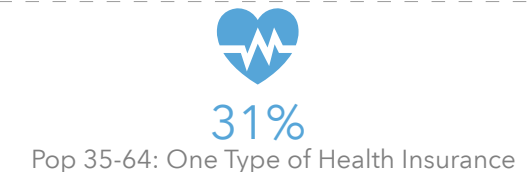
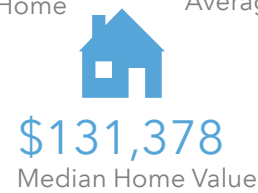
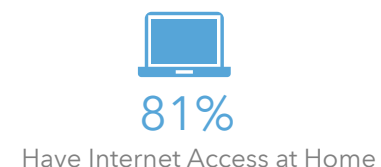
## EDUCATION



## EMPLOYMENT



## MISCELLANEOUS FACTS

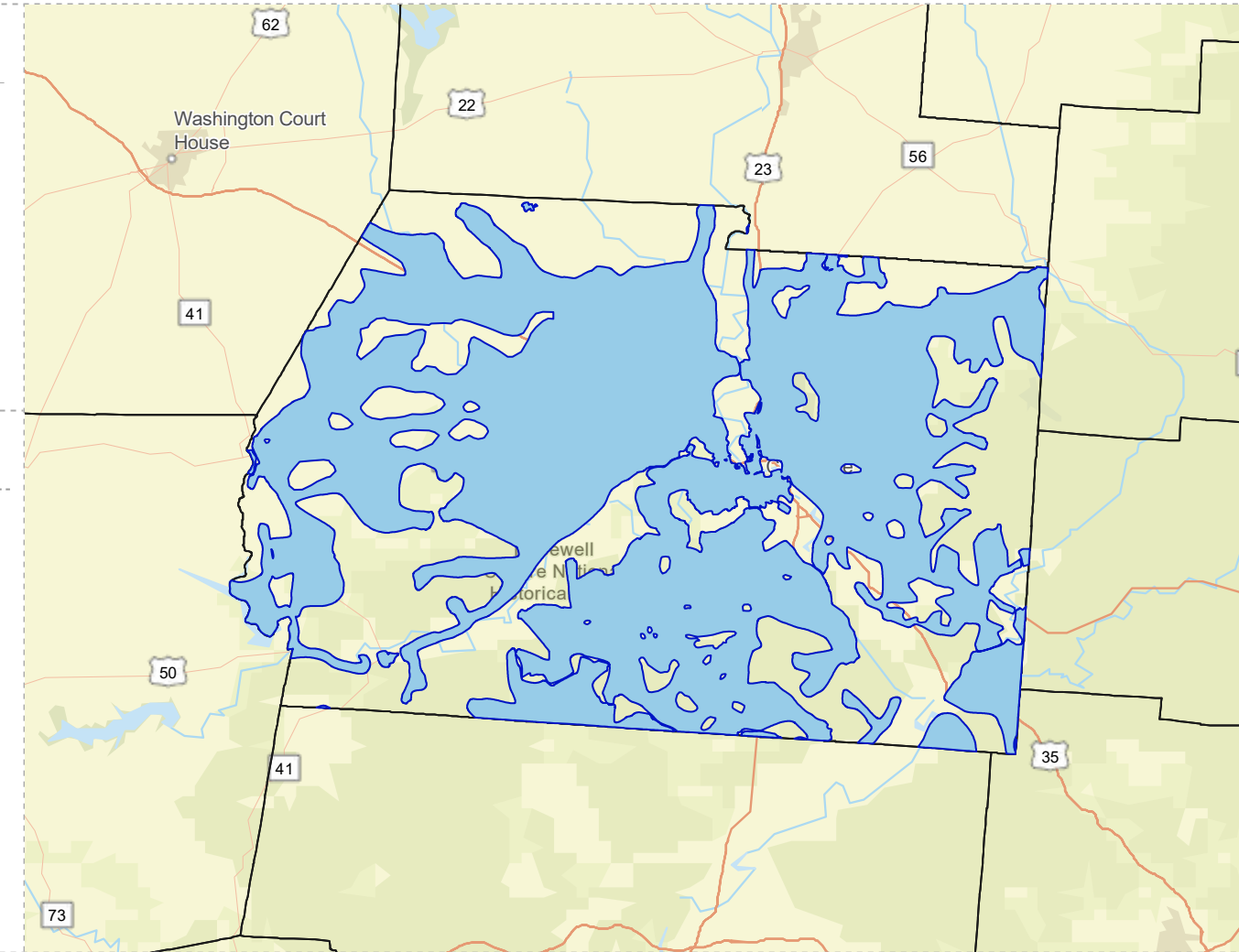


# ROSS COUNTY WITH PUBLIC WATER ACCESS

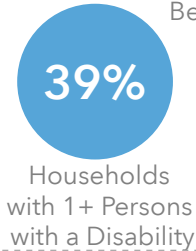
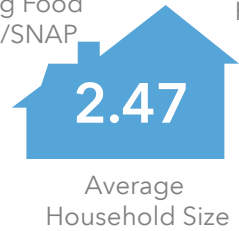
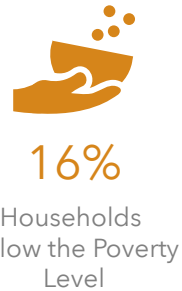
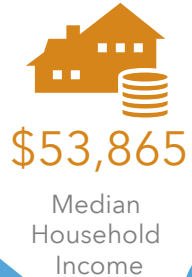
Ross\_Co\_With\_Water  
Area: 425.26 square miles

Source: Generalized drinking water coverage data overlay with U.S. Census Bureau, Census 2010 Summary File 1. Esri forecasts for 2021 and 2026. All survey-based estimates are subject to sampling error. The calculated population displayed with Census data measures the variability of the estimates.

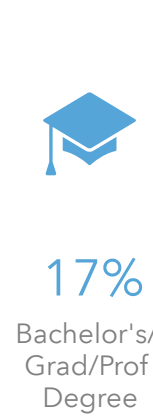
## POPULATION



## INCOME



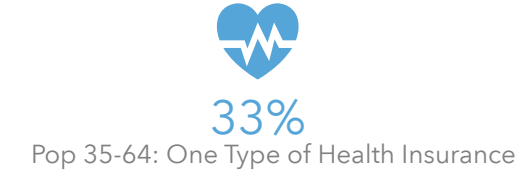
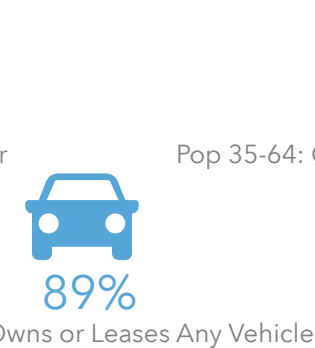
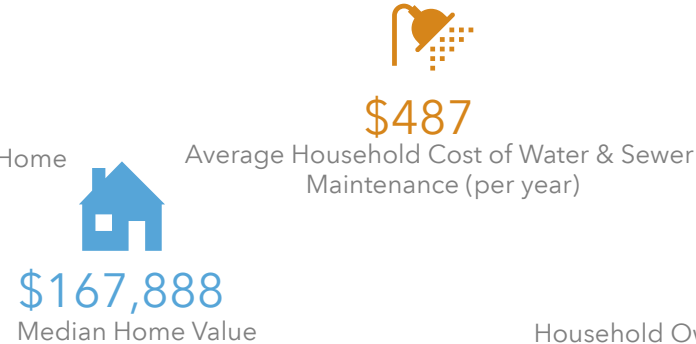
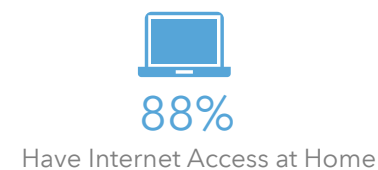
## EDUCATION



## EMPLOYMENT



## MISCELLANEOUS FACTS



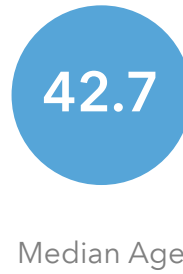


# ROSS COUNTY WITHOUT PUBLIC WATER ACCESS

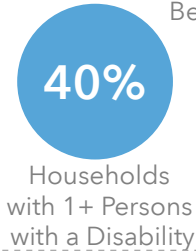
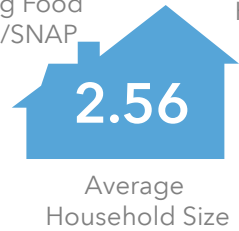
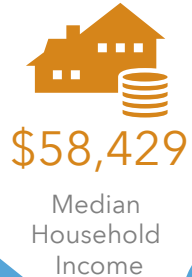
Ross\_Co\_Without\_Water  
Area: 267.77 square miles

Source: Generalized drinking water coverage data overlay with U.S. Census Bureau, Census 2010 Summary File 1. Esri forecasts for 2021 and 2026. All survey-based estimates are subject to sampling error. The calculated population displayed with Census data measures the variability of the estimates.

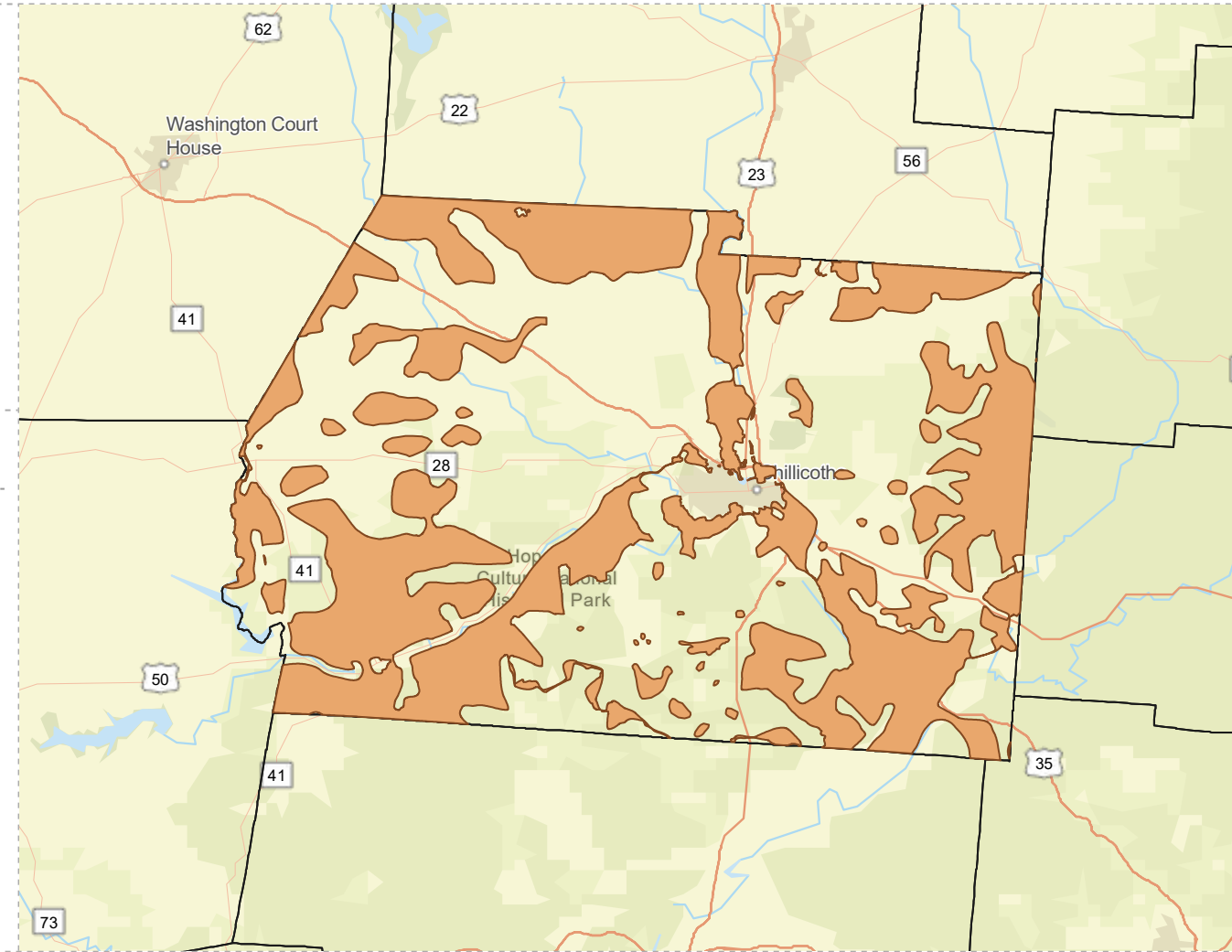
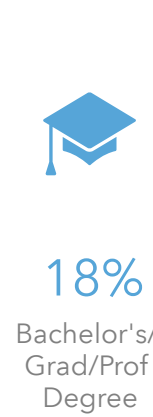
## POPULATION



## INCOME



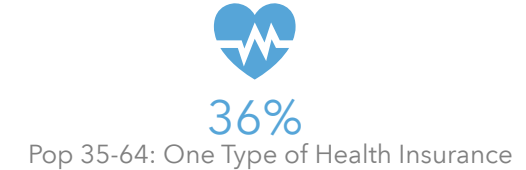
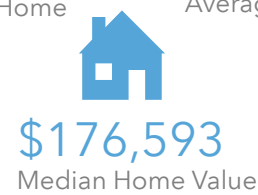
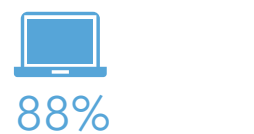
## EDUCATION



## EMPLOYMENT



## MISCELLANEOUS FACTS



# SCIOTO COUNTY WITH PUBLIC WATER ACCESS

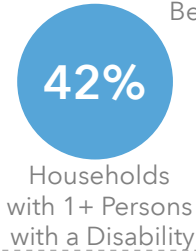
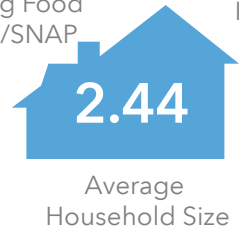
Scioto\_Co\_With\_Water  
Area: 421.6 square miles

Source: Generalized drinking water coverage data overlay with U.S. Census Bureau, Census 2010 Summary File 1. Esri forecasts for 2021 and 2026. All survey-based estimates are subject to sampling error. The calculated population displayed with Census data measures the variability of the estimates.

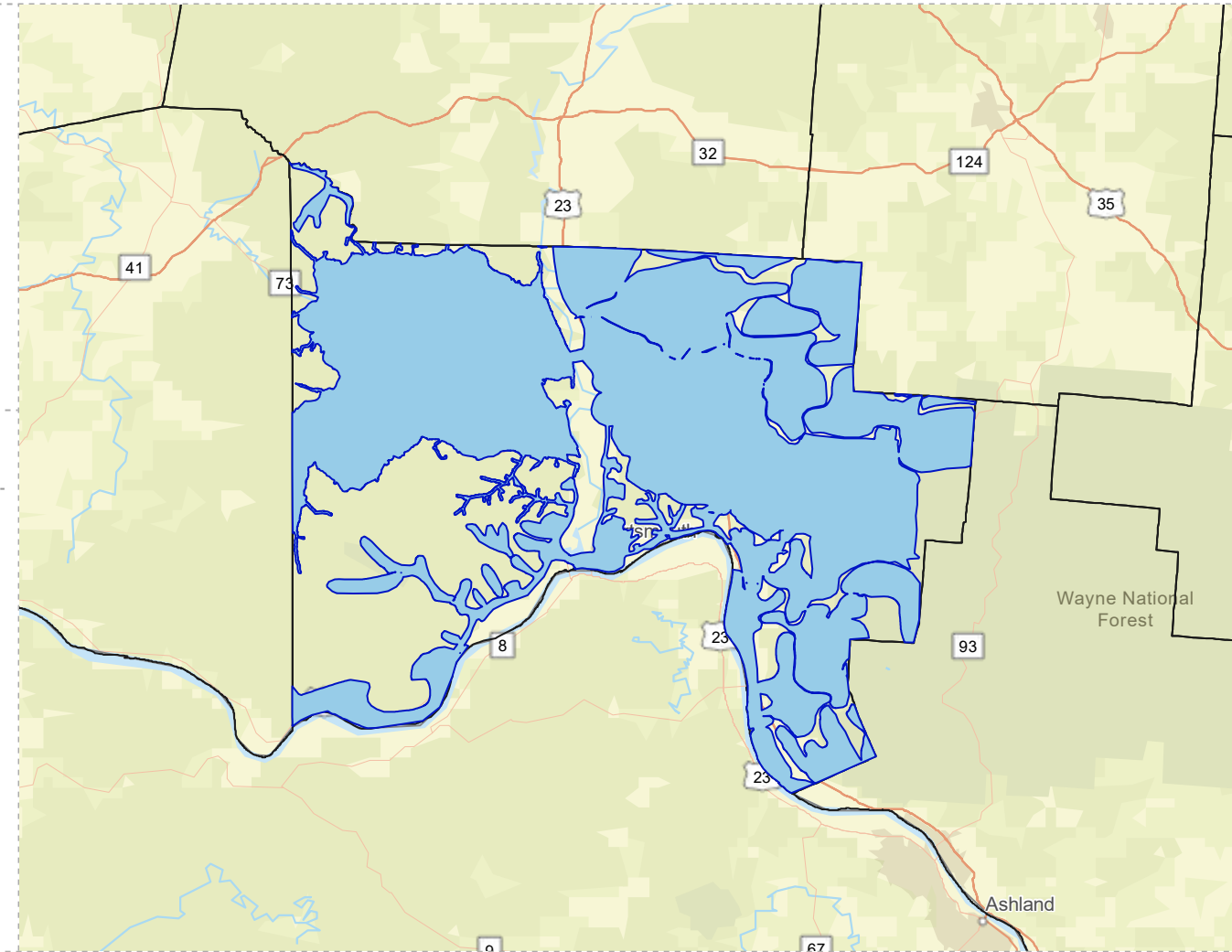
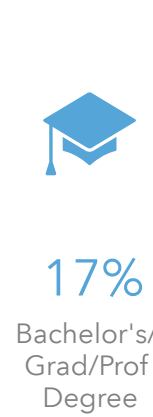
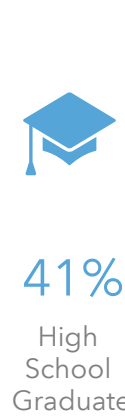
## POPULATION



## INCOME



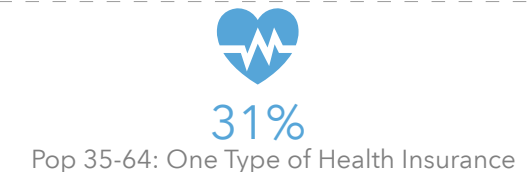
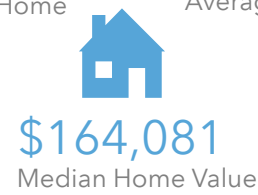
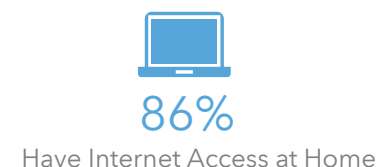
## EDUCATION



## EMPLOYMENT



## MISCELLANEOUS FACTS



# SCIOTO COUNTY WITHOUT PUBLIC WATER ACCESS

Scioto\_Co\_Without\_Water

Area: 194.55 square miles



Voinovich School of Leadership and Public Service

Source: Generalized drinking water coverage data overlay with U.S. Census Bureau, Census 2010 Summary File 1. Esri forecasts for 2021 and 2026. All survey-based estimates are subject to sampling error. The calculated population displayed with Census data measures the variability of the estimates.

## POPULATION



10,206

Total Population



43.1

Median Age

## INCOME



23%

Households Receiving Food Stamps/SNAP



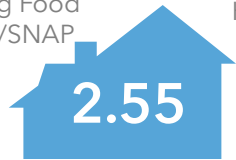
\$50,506

Median Household Income



19%

Households Below the Poverty Level



2.55

Average Household Size



39%

Households with 1+ Persons with a Disability

## EDUCATION



12%

No High School Diploma



41%

High School Graduate



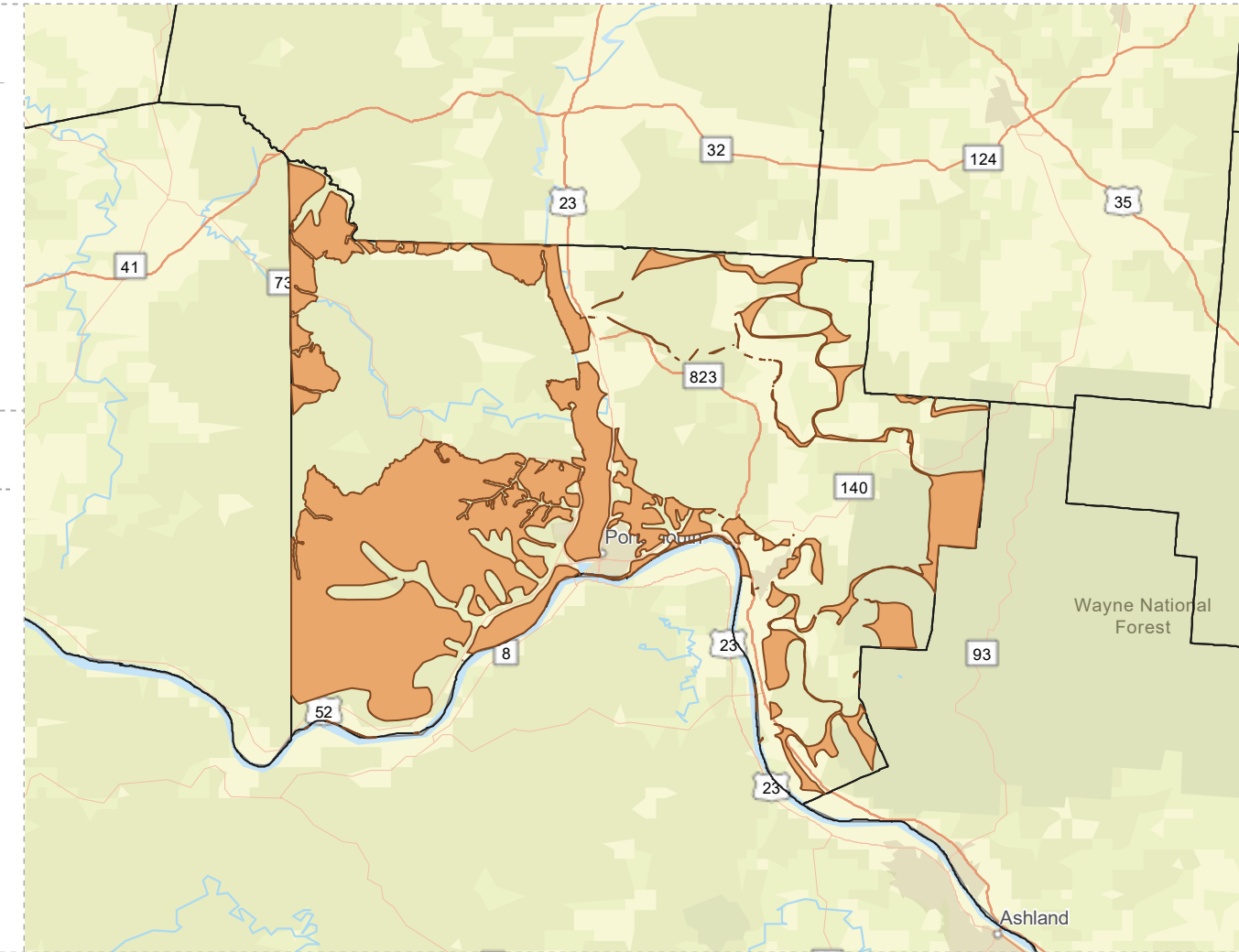
29%

Some College



18%

Bachelor's/ Grad/Prof Degree



## EMPLOYMENT



63%

White Collar



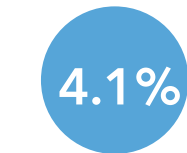
25%

Blue Collar



Services

12%



4.1%

Unemployment Rate

## MISCELLANEOUS FACTS



87%

Have Internet Access at Home



\$505

Average Household Cost of Water & Sewer Maintenance (per year)



33%

Pop 35-64: One Type of Health Insurance



\$177,738

Median Home Value



89%

Household Owns or Leases Any Vehicle



23%

Household Spent \$1-\$99 in Average Week at Food Stores



# VINTON COUNTY WITH PUBLIC WATER ACCESS

Vinton\_Co\_With\_Water\_Merge

Area: 118.91 square miles



Voinovich School of Leadership and Public Service

Source: Generalized drinking water coverage data overlay with U.S. Census Bureau, Census 2010 Summary File 1. Esri forecasts for 2021 and 2026. All survey-based estimates are subject to sampling error. The calculated population displayed with Census data measures the variability of the estimates.

## POPULATION



6,081

Total Population



42.4

Median Age

## INCOME



25%

Households Receiving Food Stamps/SNAP



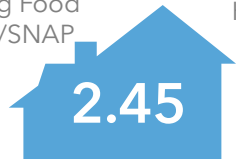
\$44,202

Median Household Income



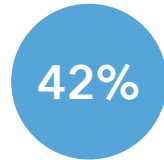
21%

Households Below the Poverty Level



2.45

Average Household Size



42%

Households with 1+ Persons with a Disability

## EMPLOYMENT



46%

White Collar



40%

Blue Collar



15%

Services



5.9%

Unemployment Rate

## EDUCATION



20%

No High School Diploma



42%

High School Graduate



23%

Some College



15%

Bachelor's/ Grad/Prof Degree

## MISCELLANEOUS FACTS



86%

Have Internet Access at Home



\$412

Average Household Cost of Water & Sewer Maintenance (per year)



35%

Pop 35-64: One Type of Health Insurance



\$102,579

Median Home Value



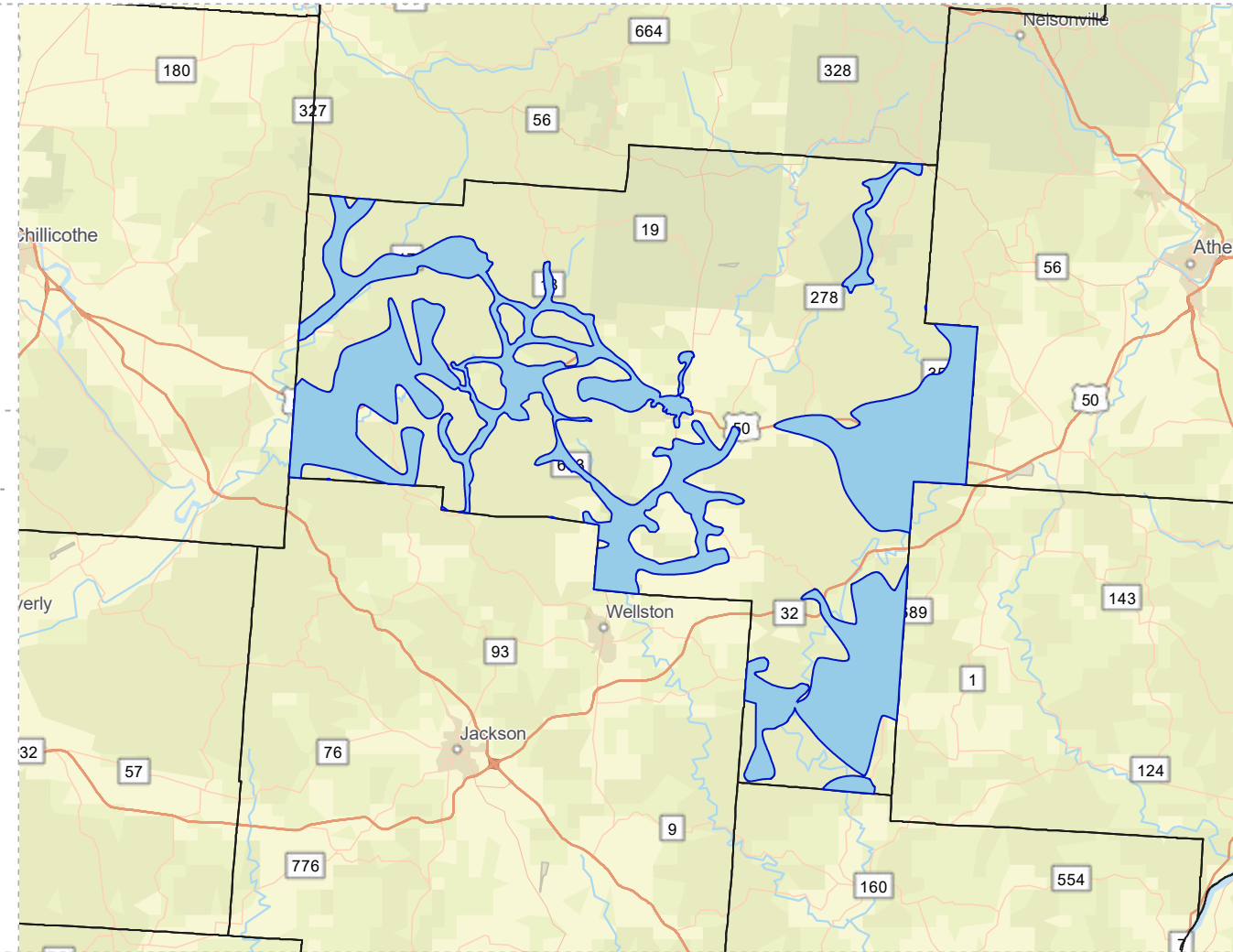
88%

Household Owns or Leases Any Vehicle



24%

Household Spent \$1-\$99 in Average Week at Food Stores



# VINTON COUNTY WITHOUT PUBLIC WATER ACCESS

Vinton\_Co\_Without\_Water\_Merge  
 Area: 296.07 square miles

Source: Generalized drinking water coverage data overlay with U.S. Census Bureau, Census 2010 Summary File 1. Esri forecasts for 2021 and 2026. All survey-based estimates are subject to sampling error. The calculated population displayed with Census data measures the variability of the estimates.

## POPULATION

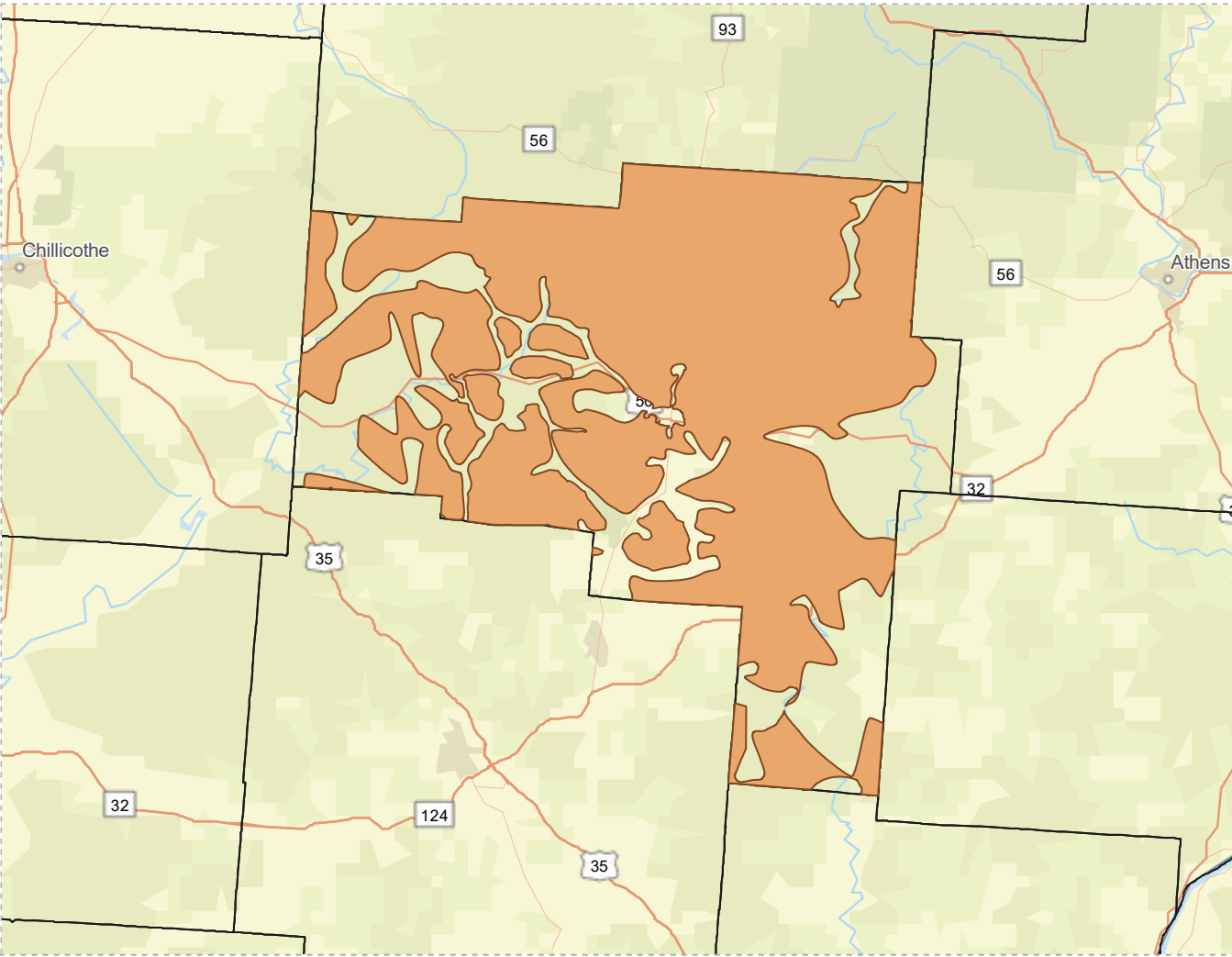


**7,574**  
 Total Population

**42.5**  
 Median Age

## INCOME

## EDUCATION



**22%**  
 Households Receiving Food Stamps/SNAP



**\$48,756**  
 Median Household Income



**17%**  
 Households Below the Poverty Level

**2.62**  
 Average Household Size

**40%**  
 Households with 1+ Persons with a Disability

**17%**  
 No High School Diploma

**44%**  
 High School Graduate



**26%**  
 Some College



**13%**  
 Bachelor's/Grad/Prof Degree

## EMPLOYMENT

## MISCELLANEOUS FACTS



**44%**  
 White Collar



**43%**  
 Blue Collar



**14%**  
 Services

**4.7%**  
 Unemployment Rate



**85%**  
 Have Internet Access at Home



**\$451**  
 Average Household Cost of Water & Sewer Maintenance (per year)



**\$116,648**  
 Median Home Value



**34%**  
 Pop 35-64: One Type of Health Insurance



**89%**  
 Household Owns or Leases Any Vehicle



**24%**  
 Household Spent \$1-\$99 in Average Week at Food Stores