

# BHRC Generalized Water Coverage



Source: Ohio EPA, Community Water Systems coverage area data and/or line area data. Created by Ohio University Voinovich School June, 2022



# Buckeye Hills Regional Council - With Public Water Access

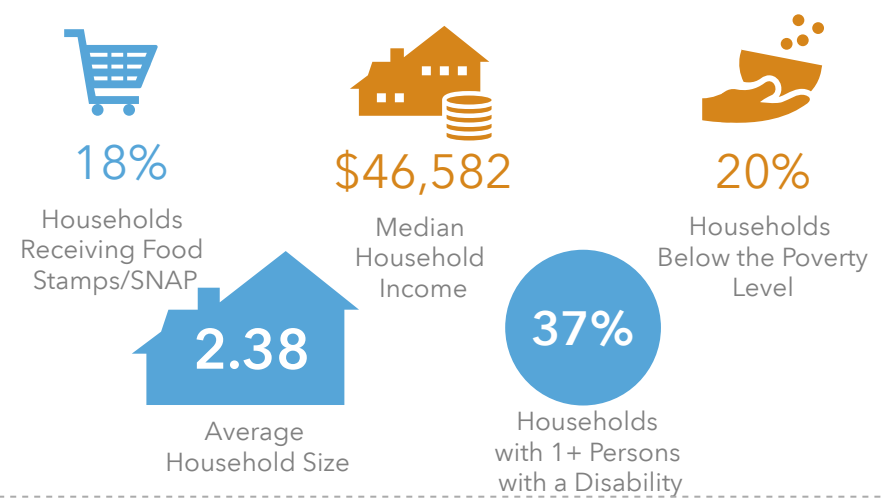
BHRC\_With\_Water  
Area: 1,439.17 square miles

Source: Generalized drinking water coverage data overlay with U.S. Census Bureau, Census 2010 Summary File 1. Esri forecasts for 2021 and 2026. All survey-based estimates are subject to sampling error. The calculated population displayed with Census data measures the variability of the estimates.

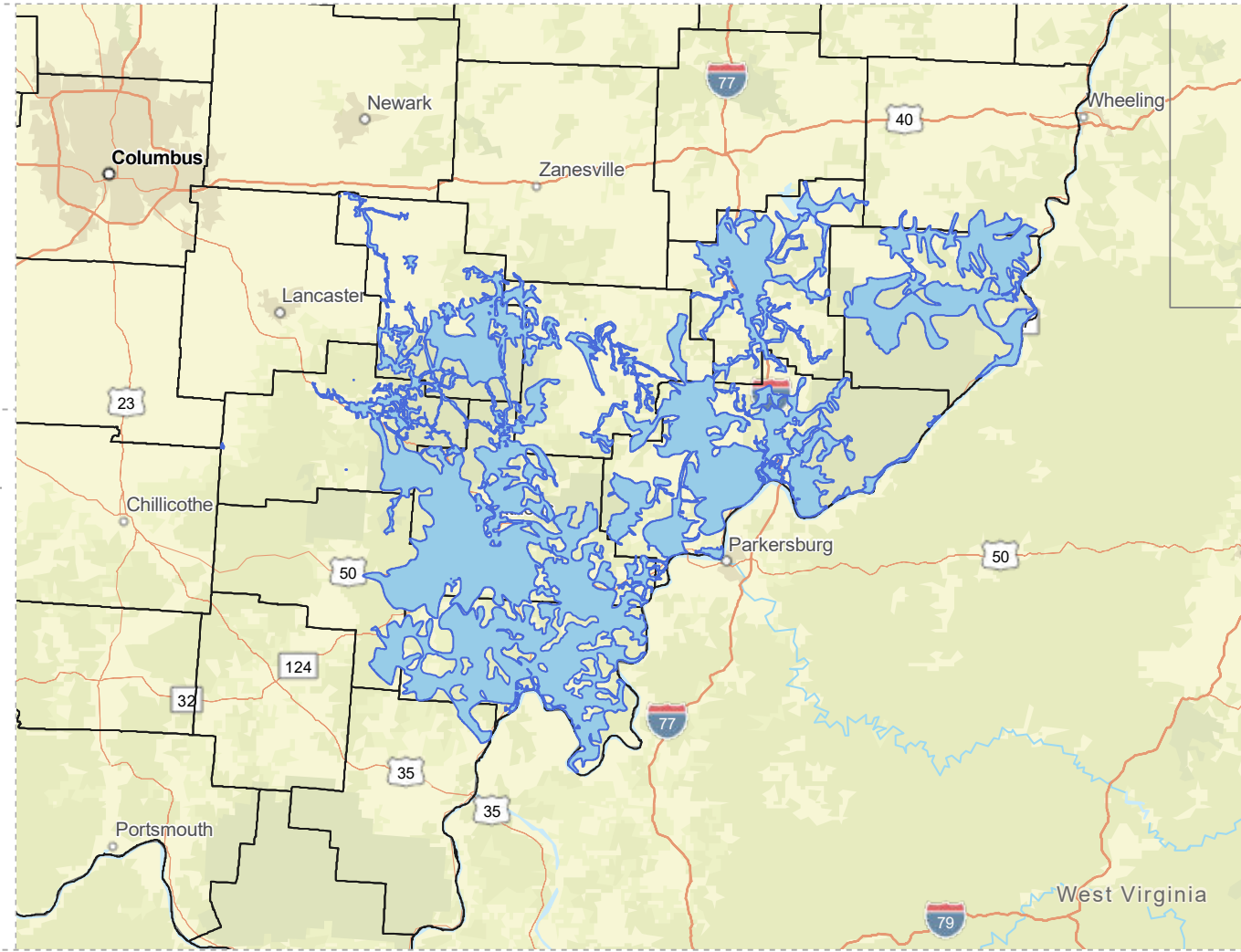
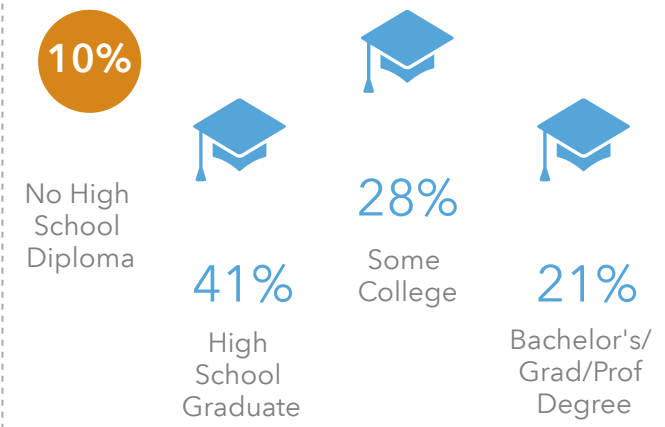
## POPULATION



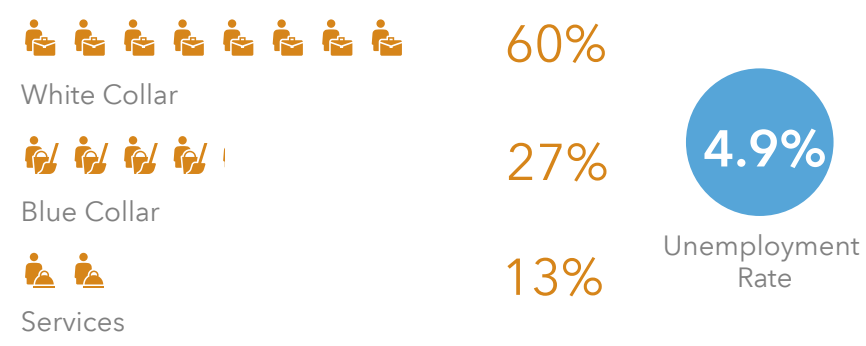
## INCOME



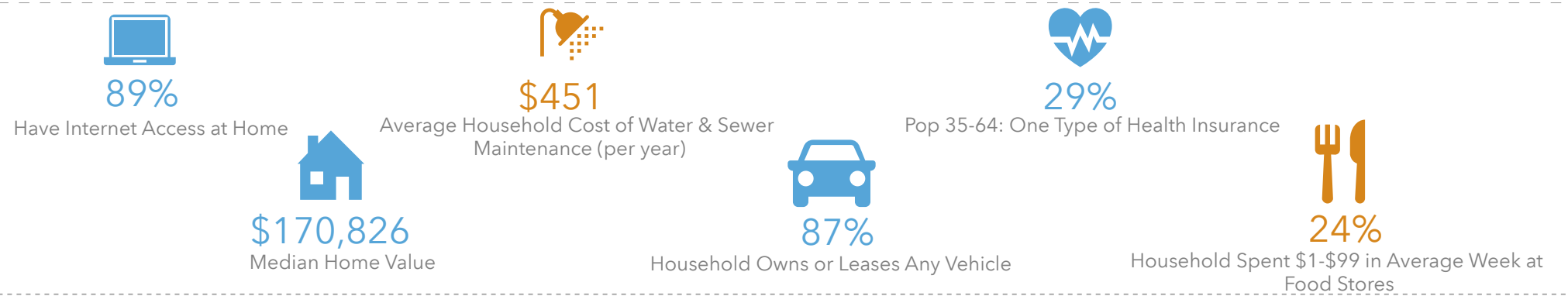
## EDUCATION



## EMPLOYMENT



## MISCELLANEOUS FACTS



# Buckeye Hills Regional Council - Without Public Water Access

BHRC\_Without\_Water\_Layer

Area: 2,336.04 square miles



Voinovich School of Leadership and Public Service

Source: Generalized drinking water coverage data overlay with U.S. Census Bureau, Census 2010 Summary File 1. Esri forecasts for 2021 and 2026. All survey-based estimates are subject to sampling error. The calculated population displayed with Census data measures the variability of the estimates.

## POPULATION

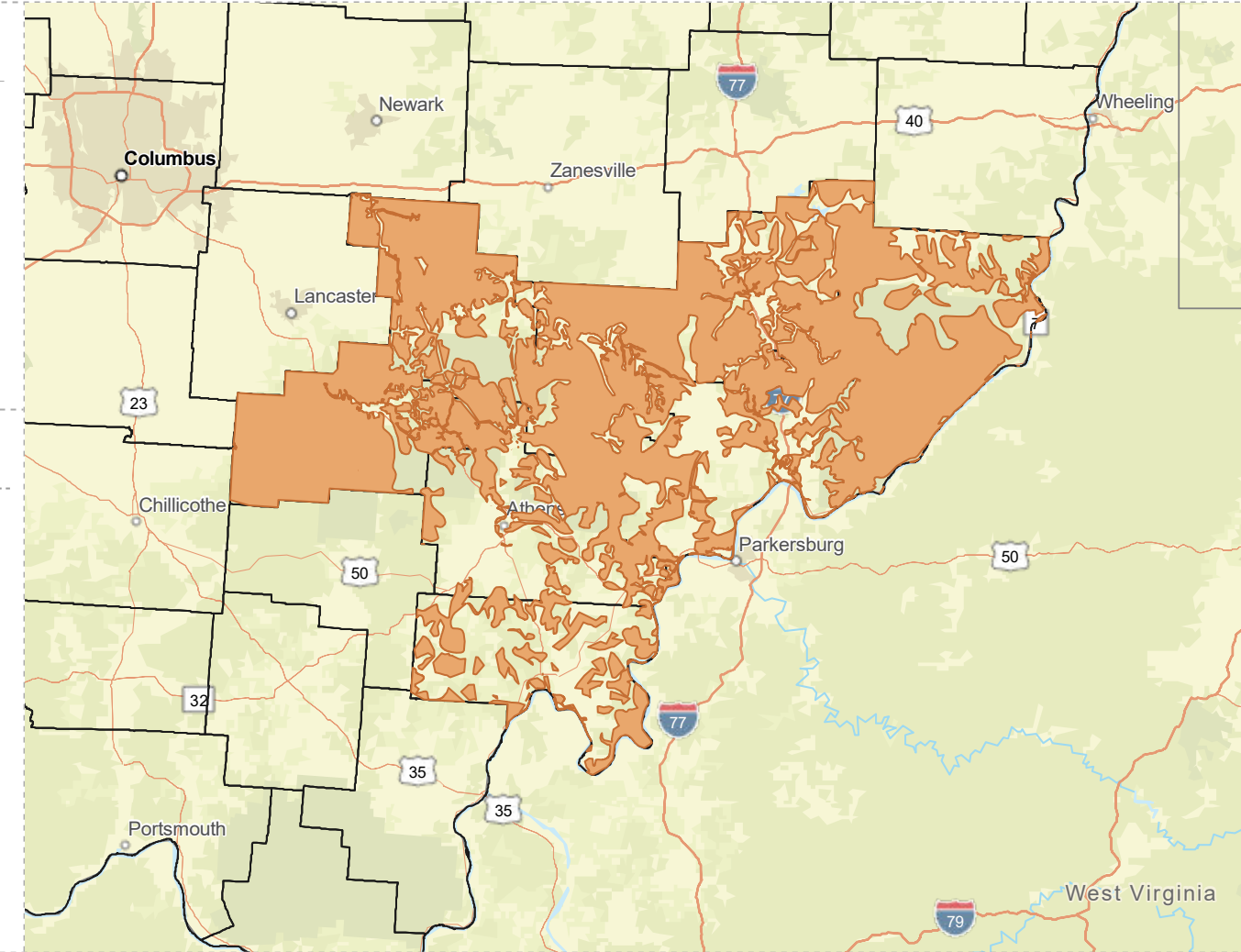


90,797

Total Population

45.1

Median Age



## INCOME



18%

Households Receiving Food Stamps/SNAP



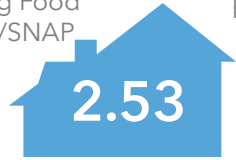
\$50,872

Median Household Income



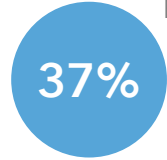
17%

Households Below the Poverty Level



2.53

Average Household Size



37%

Households with 1+ Persons with a Disability

## EMPLOYMENT



54%

White Collar



35%

Blue Collar



Services

11%

4.0%

Unemployment Rate

## EDUCATION

12%

No High School Diploma



45%

High School Graduate



28%

Some College



14%

Bachelor's/ Grad/Prof Degree

## MISCELLANEOUS FACTS



87%

Have Internet Access at Home



\$487

Average Household Cost of Water & Sewer Maintenance (per year)



34%

Pop 35-64: One Type of Health Insurance



\$180,923

Median Home Value



90%

Household Owns or Leases Any Vehicle



23%

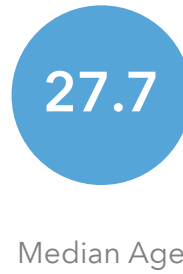
Household Spent \$1-\$99 in Average Week at Food Stores

# ATHENS COUNTY WITH PUBLIC WATER ACCESS

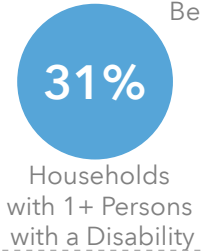
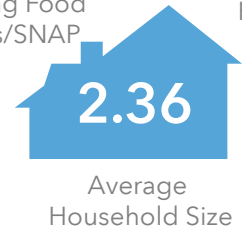
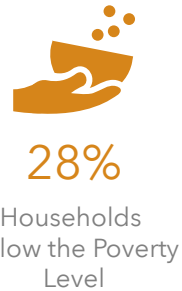
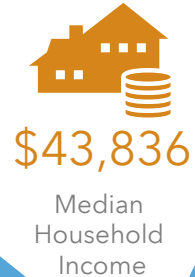
Athens\_Co\_With\_Water 1  
Area: 312.02 square miles

Source: Generalized drinking water coverage data overlay with U.S. Census Bureau, Census 2010 Summary File 1. Esri forecasts for 2021 and 2026. All survey-based estimates are subject to sampling error. The calculated population displayed with Census data measures the variability of the estimates.

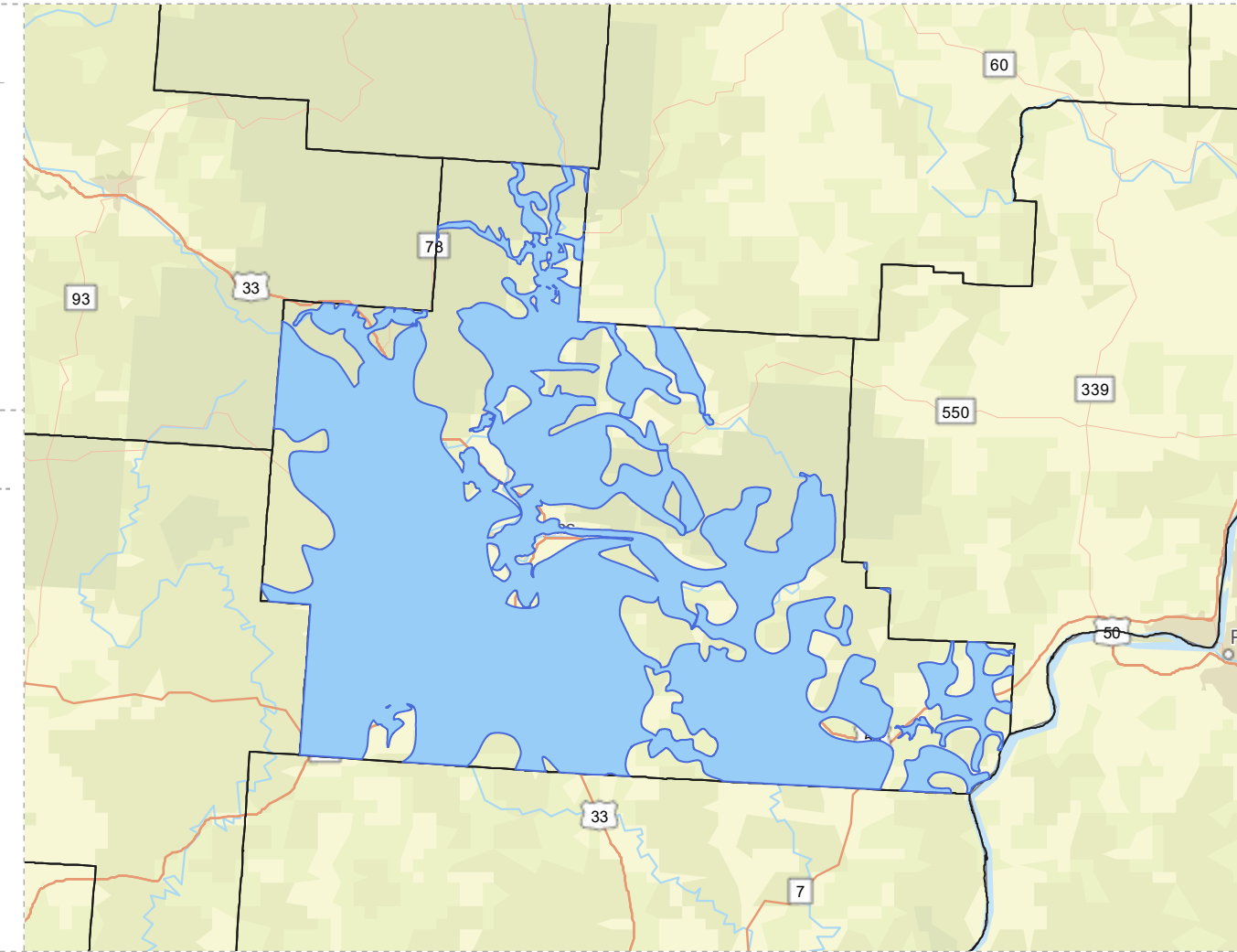
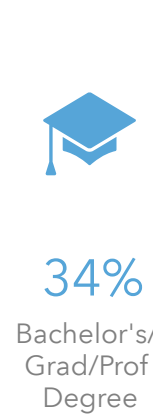
## POPULATION



## INCOME



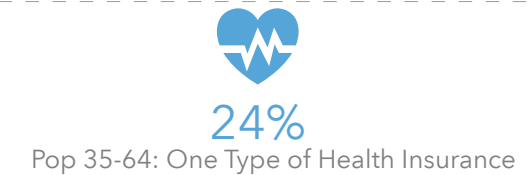
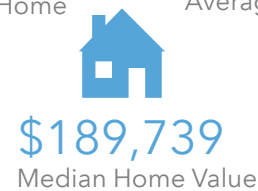
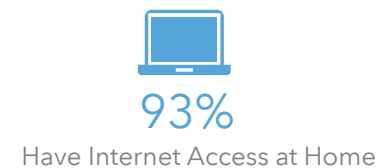
## EDUCATION



## EMPLOYMENT



## MISCELLANEOUS FACTS



# ATHENS COUNTY WITHOUT PUBLIC WATER ACCESS

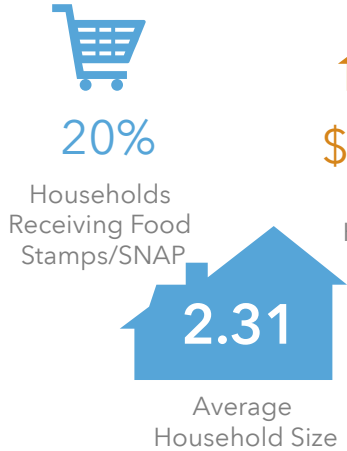
Athens\_Co\_Without\_Water 1  
 Area: 196.42 square miles

Source: Generalized drinking water coverage data overlay with U.S. Census Bureau, Census 2010 Summary File 1. Esri forecasts for 2021 and 2026. All survey-based estimates are subject to sampling error. The calculated population displayed with Census data measures the variability of the estimates.

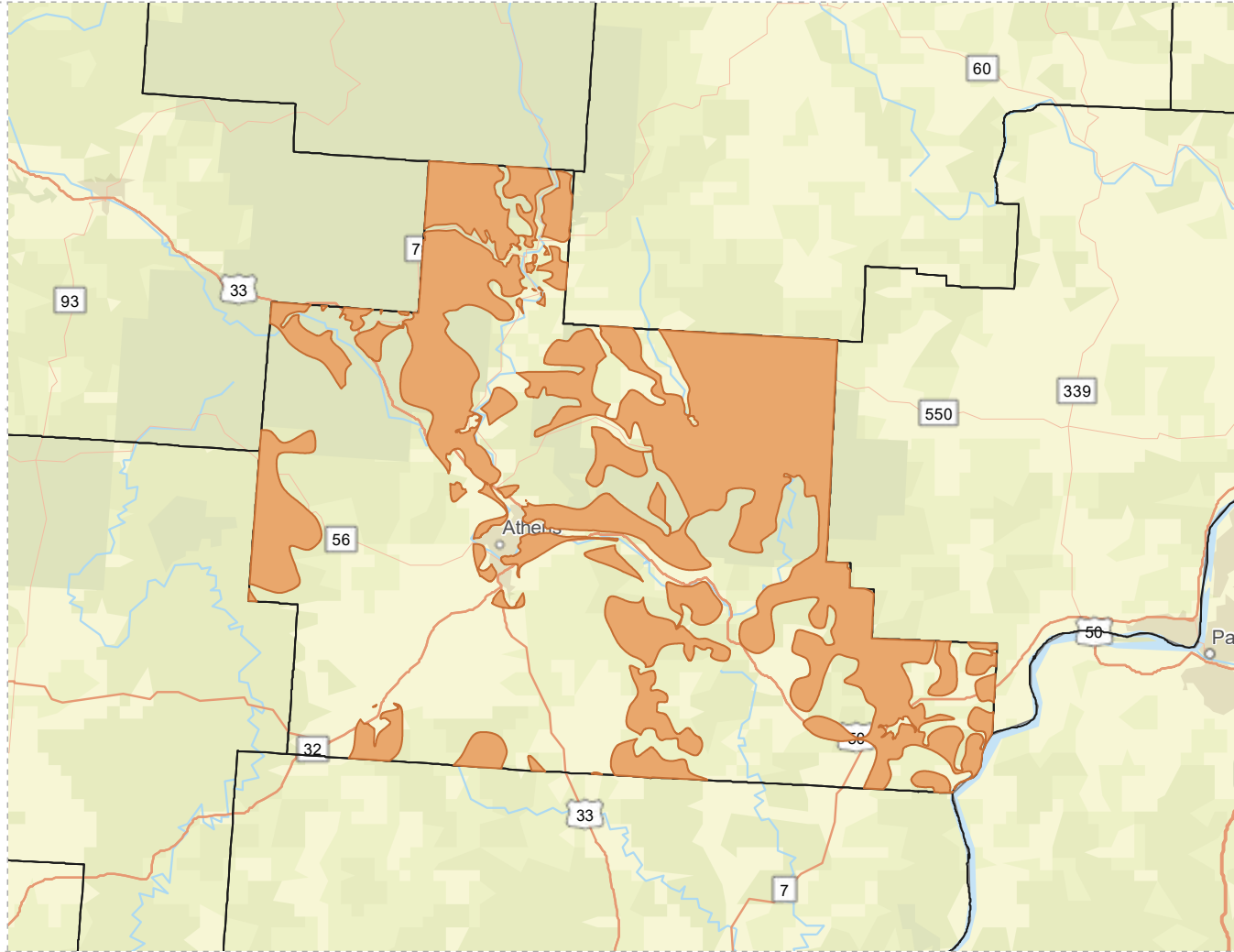
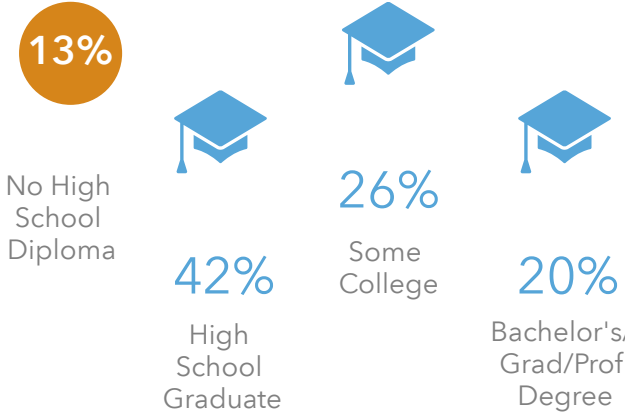
## POPULATION



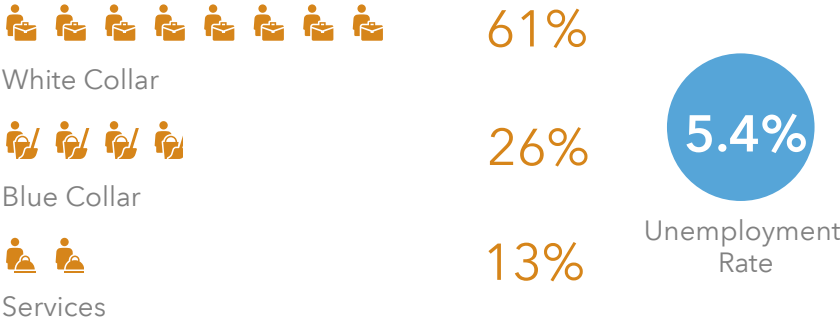
## INCOME



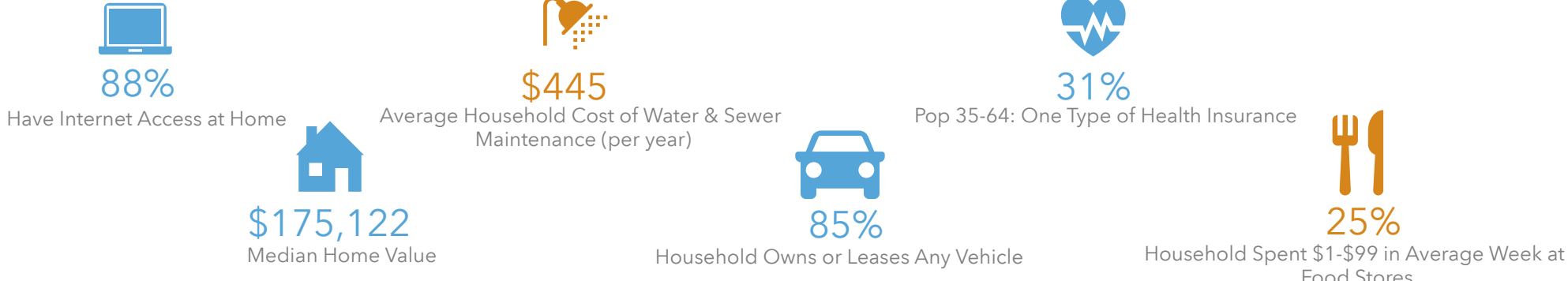
## EDUCATION



## EMPLOYMENT



## MISCELLANEOUS FACTS





# HOCKING COUNTY WITH PUBLIC WATER ACCESS

Hocking\_Co\_With\_Water  
Area: 52.48 square miles

Source: Generalized drinking water coverage data overlay with U.S. Census Bureau, Census 2010 Summary File 1. Esri forecasts for 2021 and 2026. All survey-based estimates are subject to sampling error. The calculated population displayed with Census data measures the variability of the estimates.

## POPULATION



11,936

Total Population



40.6

Median Age

## INCOME



23%

Households Receiving Food Stamps/SNAP



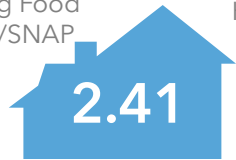
\$44,349

Median Household Income



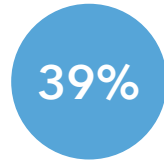
16%

Households Below the Poverty Level



2.41

Average Household Size



39%

Households with 1+ Persons with a Disability

## EMPLOYMENT



59%

White Collar



27%

Blue Collar



Services

14%



5.6%  
Unemployment Rate

## EDUCATION



10%  
No High School Diploma



43%

High School Graduate



31%

Some College



15%

Bachelor's/ Grad/Prof Degree

## MISCELLANEOUS FACTS



87%

Have Internet Access at Home



\$416

Average Household Cost of Water & Sewer Maintenance (per year)



29%

Pop 35-64: One Type of Health Insurance



\$166,358

Median Home Value



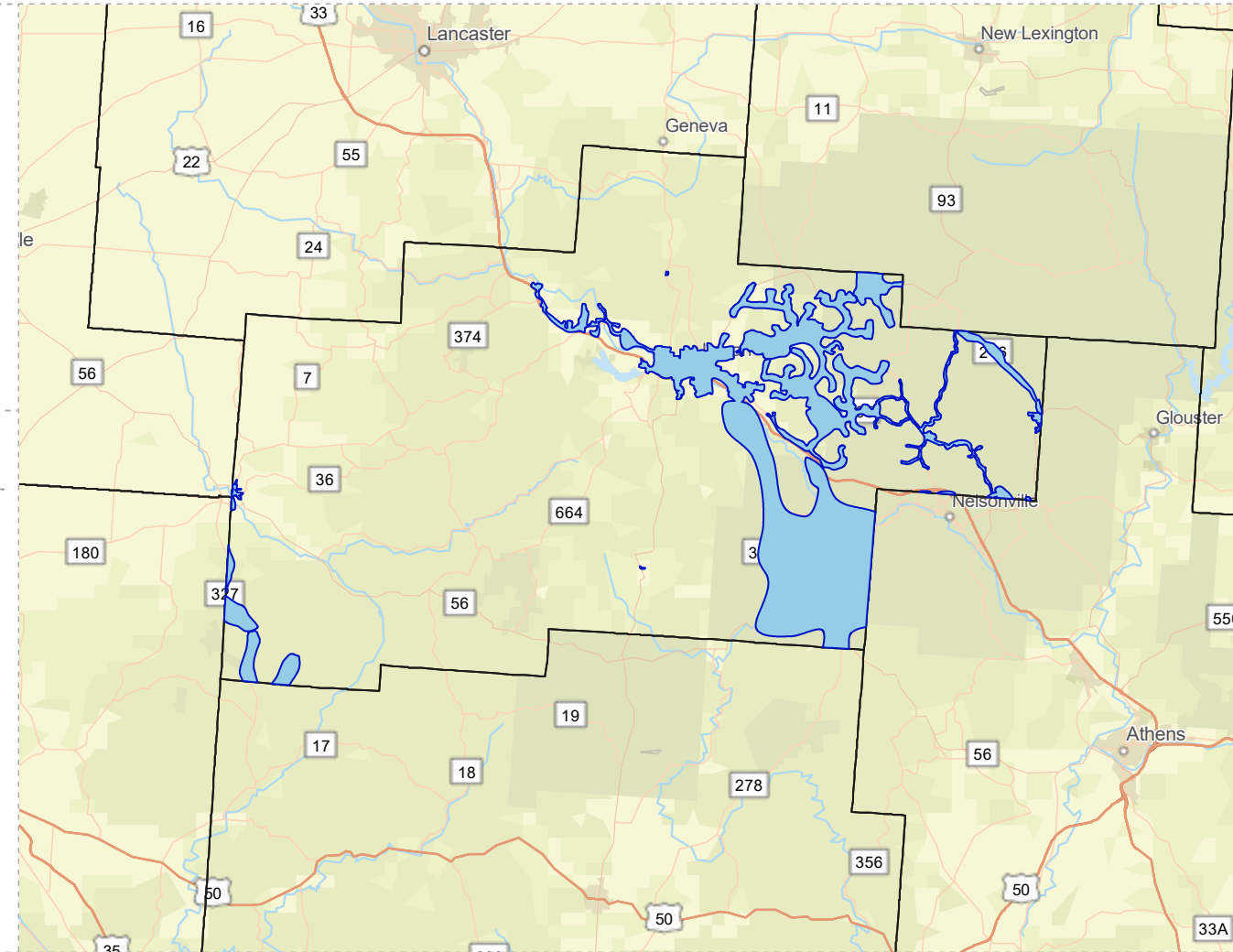
87%

Household Owns or Leases Any Vehicle



22%

Household Spent \$1-\$99 in Average Week at Food Stores



# HOCKING COUNTY WITHOUT PUBLIC WATER ACCESS

Hocking\_Co\_Without\_Water

Area: 371.15 square miles



Voinovich School of Leadership and Public Service

Source: Generalized drinking water coverage data overlay with U.S. Census Bureau, Census 2010 Summary File 1. Esri forecasts for 2021 and 2026. All survey-based estimates are subject to sampling error. The calculated population displayed with Census data measures the variability of the estimates.

## POPULATION



17,105

Total Population



44.6

Median Age

## INCOME



17%

Households Receiving Food Stamps/SNAP



\$55,687

Median Household Income



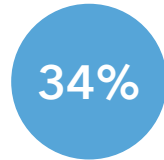
13%

Households Below the Poverty Level



2.60

Average Household Size



34%

Households with 1+ Persons with a Disability

## EMPLOYMENT



57%

White Collar



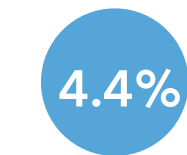
32%

Blue Collar



Services

11%



4.4%  
Unemployment Rate

## EDUCATION



10%  
No High School Diploma



46%

High School Graduate



28%

Some College



16%

Bachelor's/ Grad/Prof Degree

## MISCELLANEOUS FACTS



89%

Have Internet Access at Home



\$514

Average Household Cost of Water & Sewer Maintenance (per year)



38%

Pop 35-64: One Type of Health Insurance



\$214,504

Median Home Value



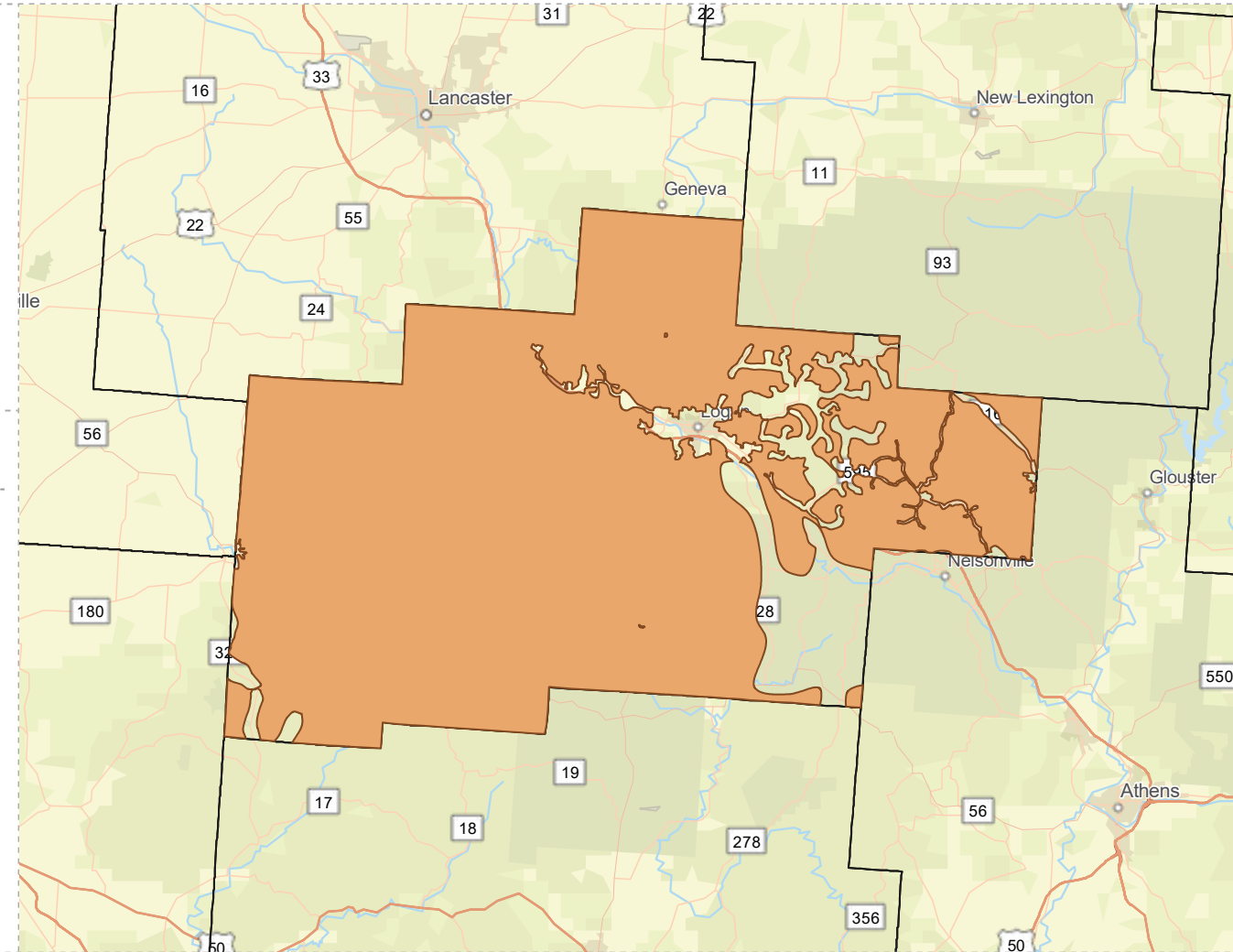
92%

Household Owns or Leases Any Vehicle



20%

Household Spent \$1-\$99 in Average Week at Food Stores



# MEIGS COUNTY WITH PUBLIC WATER ACCESS

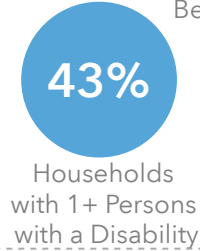
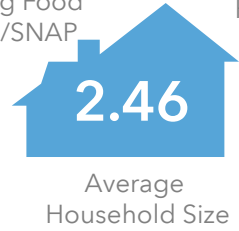
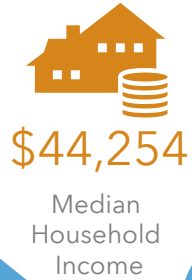
Meigs\_Co\_With\_Water  
Area: 274.92 square miles

Source: Generalized drinking water coverage data overlay with U.S. Census Bureau, Census 2010 Summary File 1. Esri forecasts for 2021 and 2026. All survey-based estimates are subject to sampling error. The calculated population displayed with Census data measures the variability of the estimates.

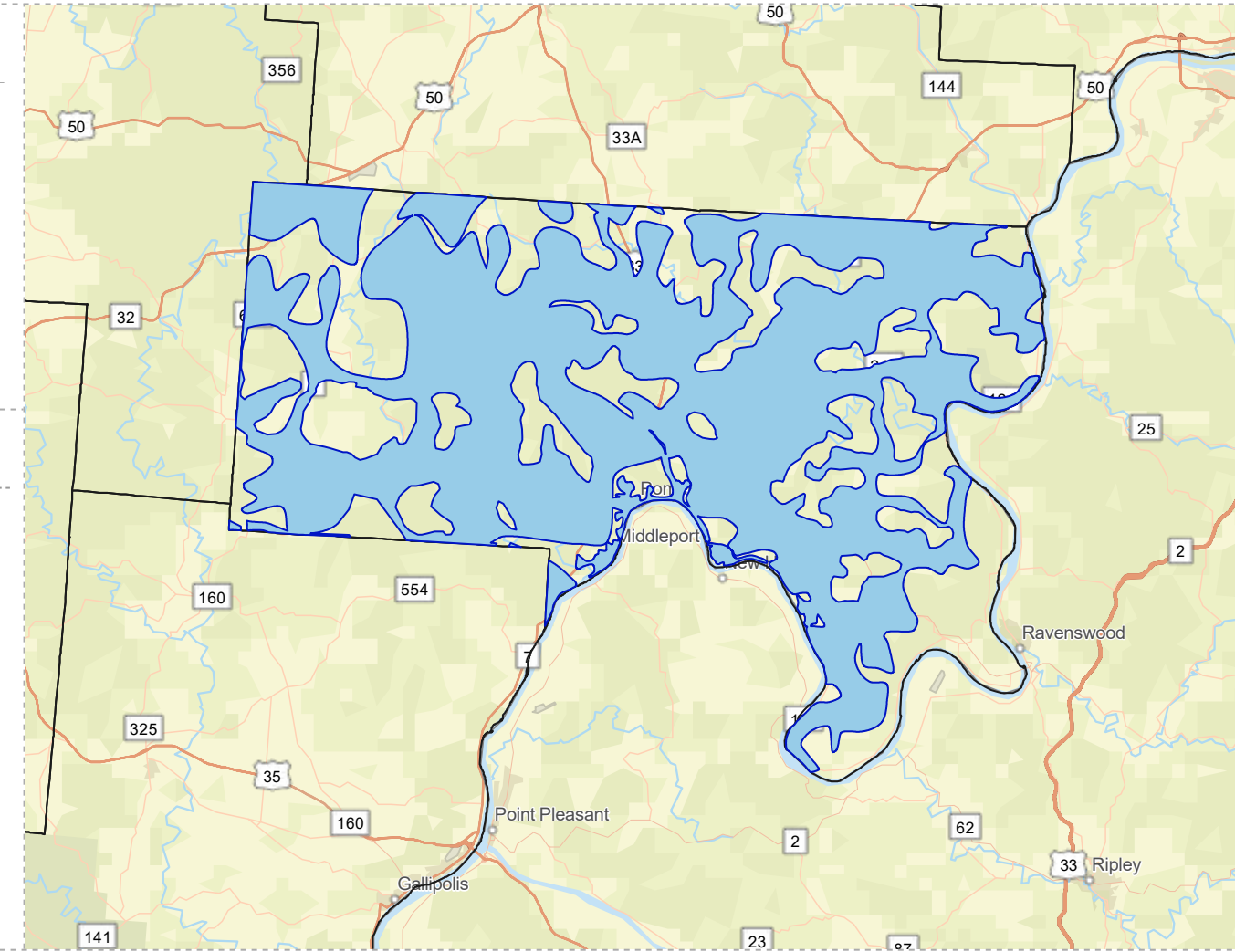
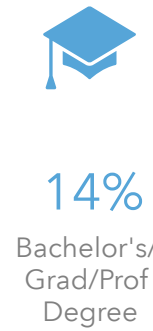
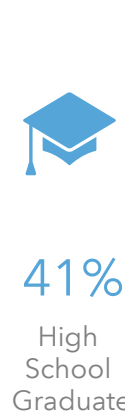
## POPULATION



## INCOME



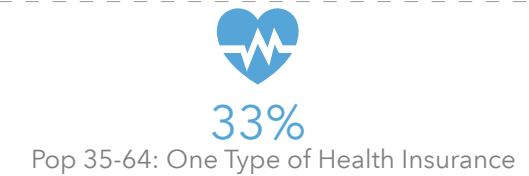
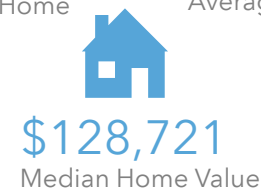
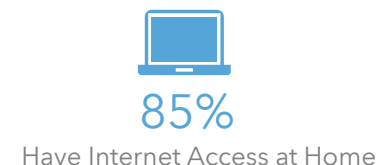
## EDUCATION



## EMPLOYMENT



## MISCELLANEOUS FACTS





# MEIGS COUNTY WITHOUT PUBLIC WATER ACCESS

Meigs\_Co\_Without\_Water

Area: 158.09 square miles



Voinovich School of Leadership and Public Service

Source: Generalized drinking water coverage data overlay with U.S. Census Bureau, Census 2010 Summary File 1. Esri forecasts for 2021 and 2026. All survey-based estimates are subject to sampling error. The calculated population displayed with Census data measures the variability of the estimates.

## POPULATION



6,344

Total Population



44.2

Median Age

## INCOME



24%

Households Receiving Food Stamps/SNAP



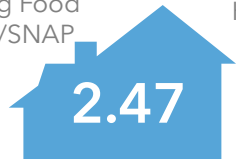
\$43,243

Median Household Income



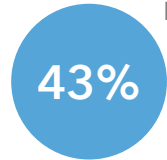
20%

Households Below the Poverty Level



2.47

Average Household Size



43%

Households with 1+ Persons with a Disability

## EMPLOYMENT



53%

White Collar



34%

Blue Collar



Services

13%



5.1%  
Unemployment Rate

## EDUCATION



16%  
No High School Diploma



42%

High School Graduate



29%

Some College



13%

Bachelor's/ Grad/Prof Degree

## MISCELLANEOUS FACTS



84%

Have Internet Access at Home



\$480

Average Household Cost of Water & Sewer Maintenance (per year)



33%

Pop 35-64: One Type of Health Insurance



\$126,302

Median Home Value



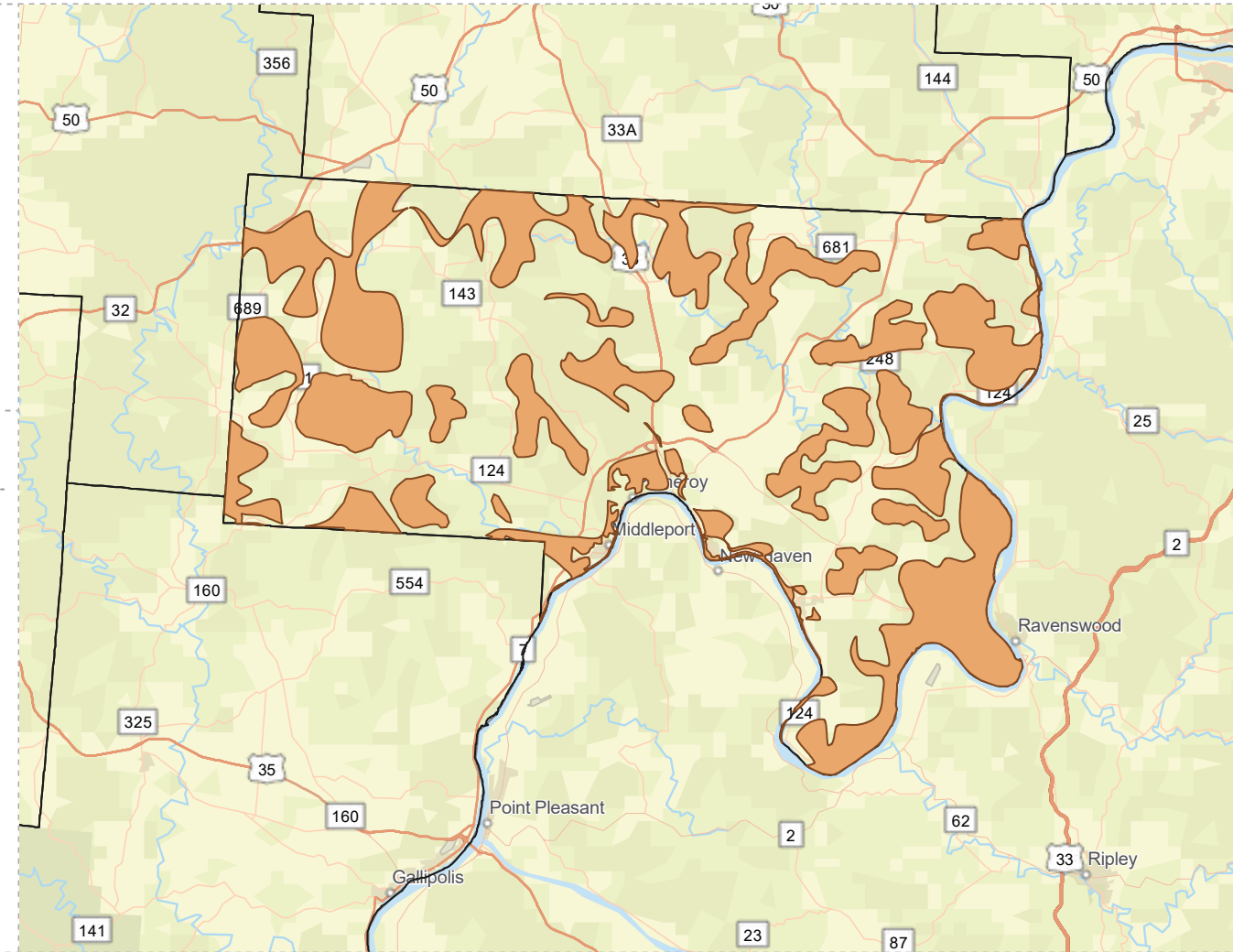
88%

Household Owns or Leases Any Vehicle



25%

Household Spent \$1-\$99 in Average Week at Food Stores



# MONROE COUNTY WITH PUBLIC WATER ACCESS

Monroe\_Co\_With\_Water  
 Area: 165.94 square miles

Source: Generalized drinking water coverage data overlay with U.S. Census Bureau, Census 2010 Summary File 1. Esri forecasts for 2021 and 2026. All survey-based estimates are subject to sampling error. The calculated population displayed with Census data measures the variability of the estimates.

## POPULATION



8,577

Total Population



47.5

Median Age

## INCOME



16%

Households Receiving Food Stamps/SNAP



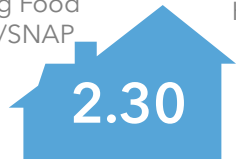
\$44,978

Median Household Income



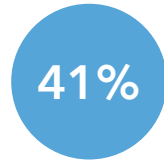
17%

Households Below the Poverty Level



2.30

Average Household Size



41%

Households with 1+ Persons with a Disability

## EMPLOYMENT



52%

White Collar



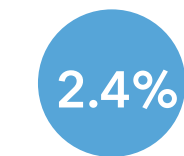
39%

Blue Collar



Services

9%



2.4%

Unemployment Rate

## EDUCATION



11%

No High School Diploma



51%

High School Graduate



25%

Some College



13%

Bachelor's/ Grad/Prof Degree

## MISCELLANEOUS FACTS



85%

Have Internet Access at Home



\$482

Average Household Cost of Water & Sewer Maintenance (per year)



33%

Pop 35-64: One Type of Health Insurance



\$137,966

Median Home Value



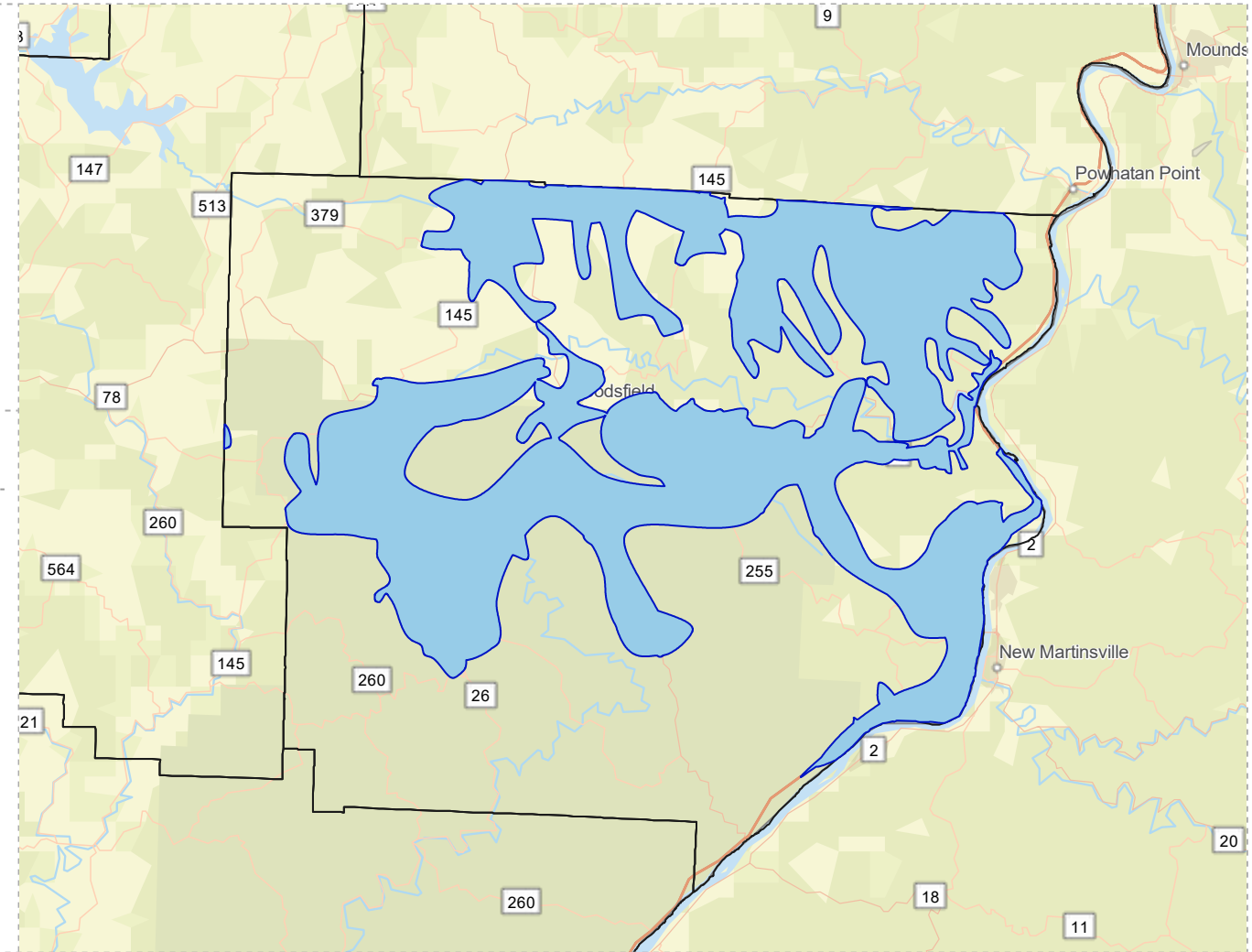
90%

Household Owns or Leases Any Vehicle



26%

Household Spent \$1-\$99 in Average Week at Food Stores





# MONROE COUNTY WITHOUT PUBLIC WATER ACCESS

Monroe\_Co\_Without\_Water\_MERGE 1

Area: 291.52 square miles



Voinovich School of Leadership and Public Service

Source: Generalized drinking water coverage data overlay with U.S. Census Bureau, Census 2010 Summary File 1. Esri forecasts for 2021 and 2026. All survey-based estimates are subject to sampling error. The calculated population displayed with Census data measures the variability of the estimates.

## POPULATION



5,888

Total Population



46.4

Median Age

## INCOME



13%

Households Receiving Food Stamps/SNAP



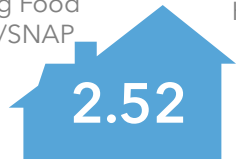
\$46,154

Median Household Income



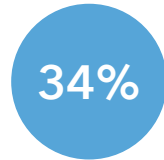
15%

Households Below the Poverty Level



2.52

Average Household Size



34%

Households with 1+ Persons with a Disability

## EDUCATION



10%

No High School Diploma



52%

High School Graduate



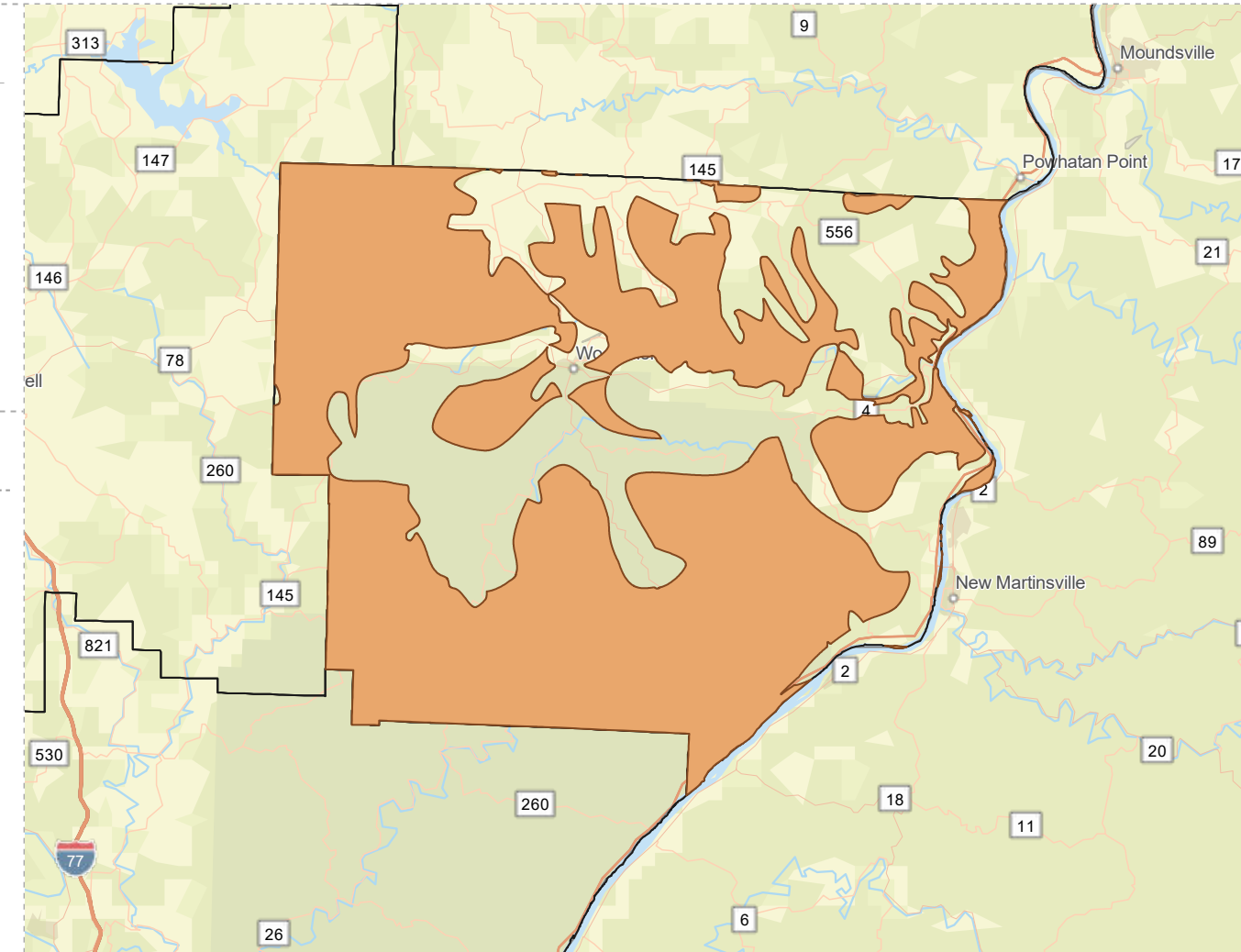
25%

Some College



13%

Bachelor's/ Grad/Prof Degree



## EMPLOYMENT



48%

White Collar



45%

Blue Collar



Services

7%



2.8%

Unemployment Rate

## MISCELLANEOUS FACTS



85%

Have Internet Access at Home



\$492

Average Household Cost of Water & Sewer Maintenance (per year)



\$143,685

Median Home Value



90%

Household Owns or Leases Any Vehicle



33%

Pop 35-64: One Type of Health Insurance



25%

Household Spent \$1-\$99 in Average Week at Food Stores

# MORGAN COUNTY WITH PUBLIC WATER ACCESS

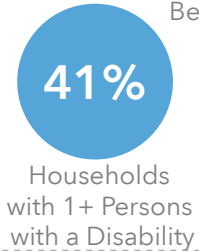
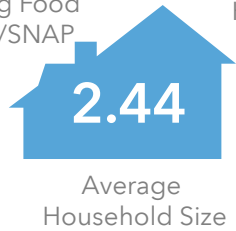
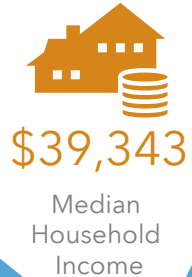
Morgan\_Co\_With\_Water  
Area: 77.71 square miles

Source: Generalized drinking water coverage data overlay with U.S. Census Bureau, Census 2010 Summary File 1. Esri forecasts for 2021 and 2026. All survey-based estimates are subject to sampling error. The calculated population displayed with Census data measures the variability of the estimates.

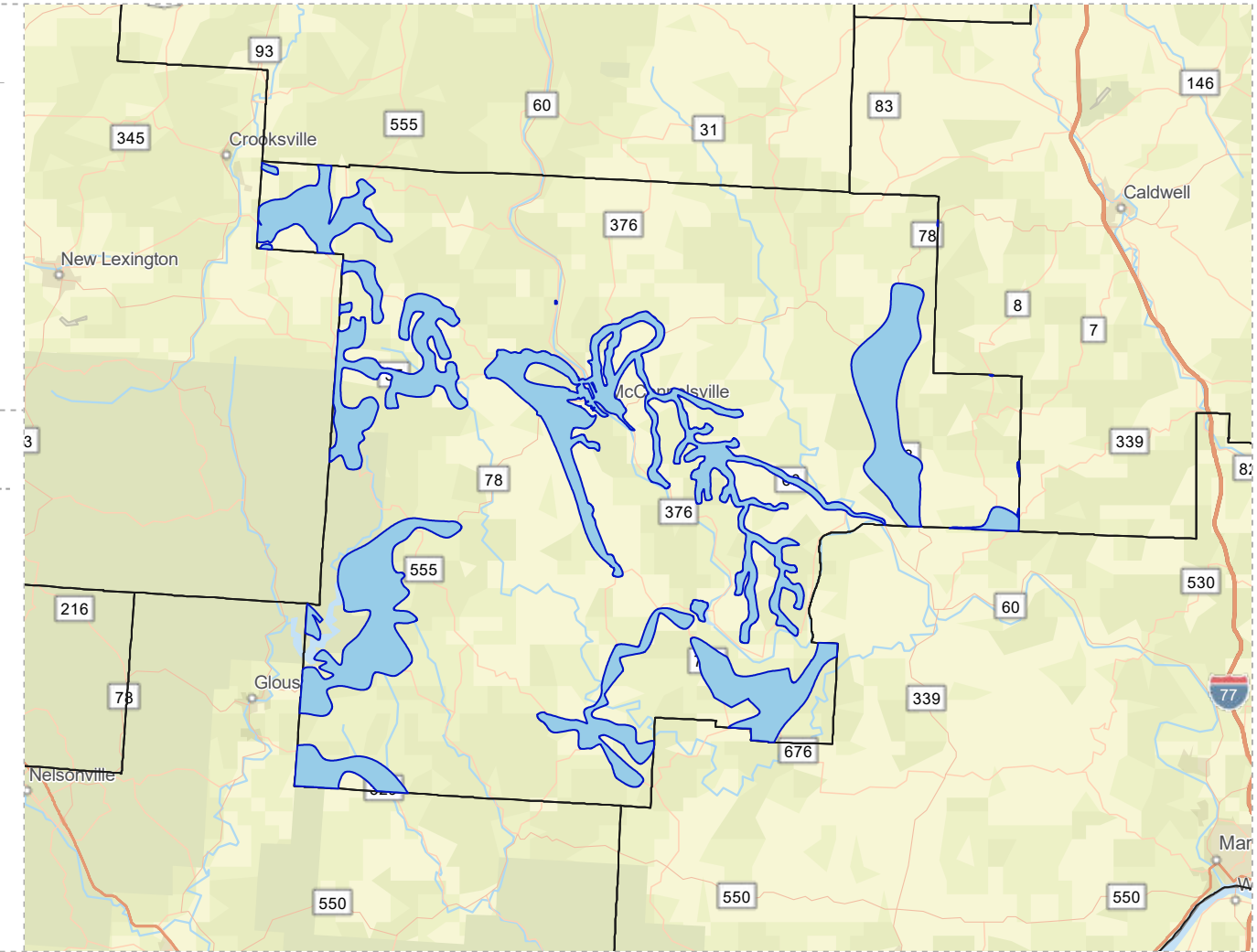
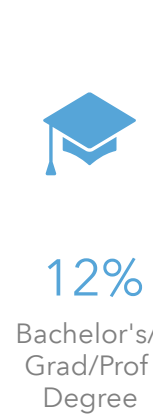
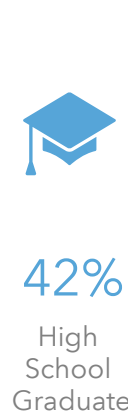
## POPULATION



## INCOME



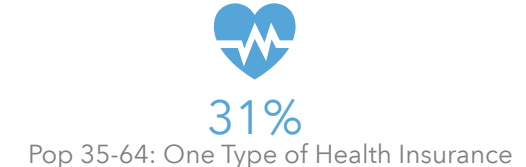
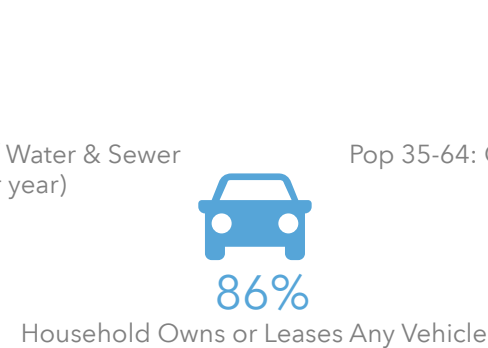
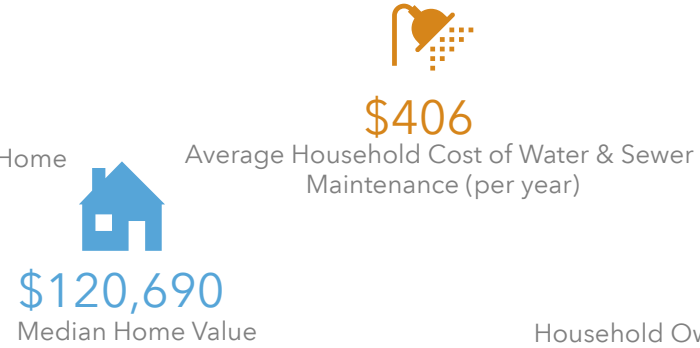
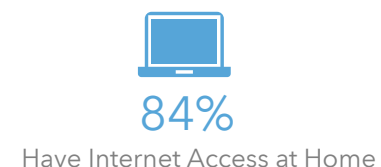
## EDUCATION



## EMPLOYMENT



## MISCELLANEOUS FACTS





# MORGAN COUNTY WITHOUT PUBLIC WATER ACCESS

Morgan\_Co\_Without\_Water

Area: 344.07 square miles



Voinovich School of Leadership and Public Service

Source: Generalized drinking water coverage data overlay with U.S. Census Bureau, Census 2010 Summary File 1. Esri forecasts for 2021 and 2026. All survey-based estimates are subject to sampling error. The calculated population displayed with Census data measures the variability of the estimates.

## POPULATION



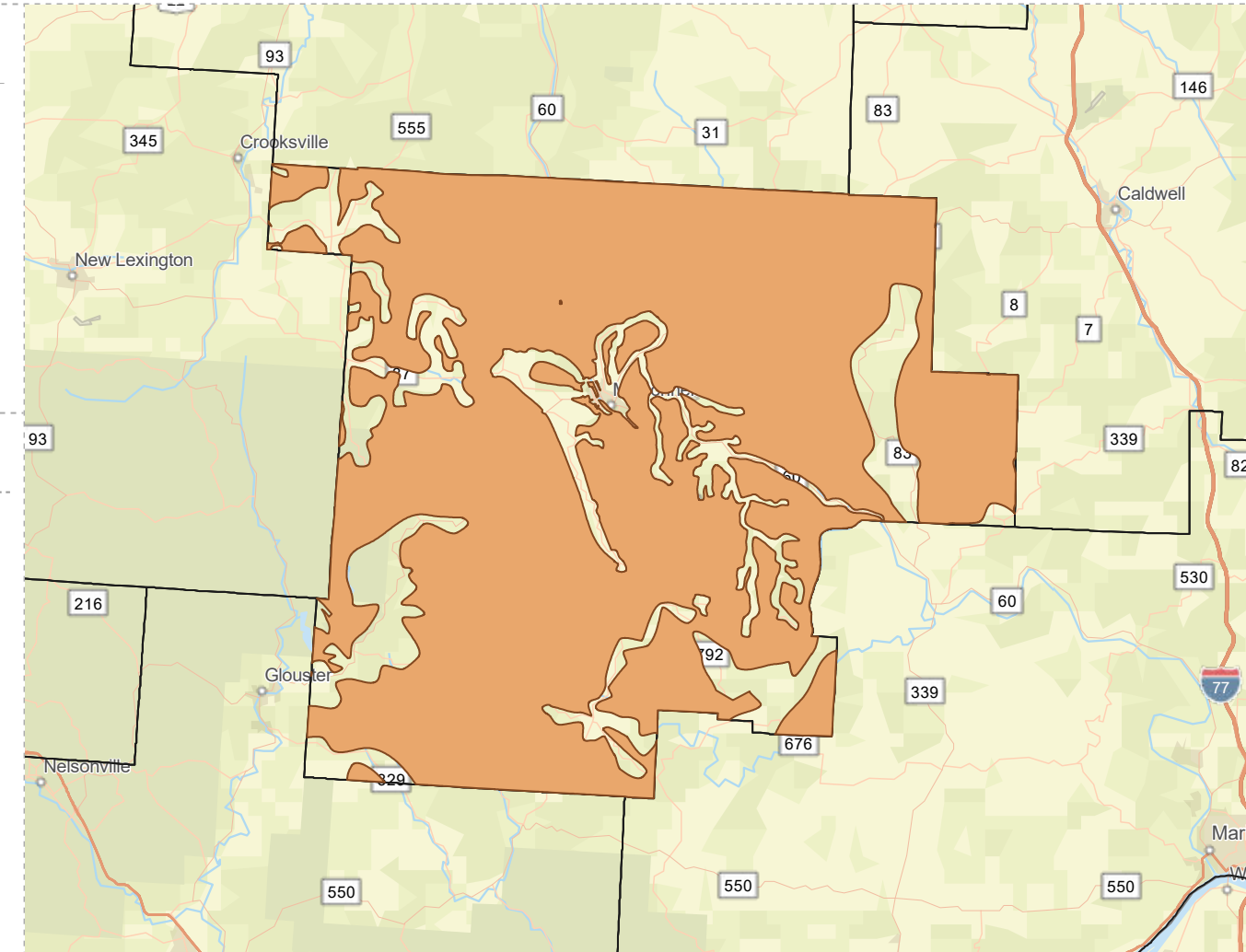
9,275

Total Population



45.5

Median Age



## INCOME



21%

Households Receiving Food Stamps/SNAP



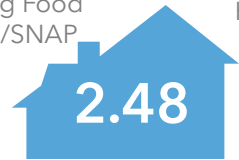
\$41,809

Median Household Income



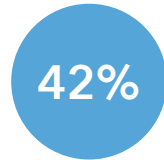
20%

Households Below the Poverty Level



2.48

Average Household Size



42%

Households with 1+ Persons with a Disability

## EMPLOYMENT



51%

White Collar



40%

Blue Collar



Services

9%



3.3%  
Unemployment Rate

## EDUCATION



15%  
No High School Diploma



45%

High School Graduate



31%

Some College



10%

Bachelor's/ Grad/Prof Degree

## MISCELLANEOUS FACTS



84%

Have Internet Access at Home



\$446

Average Household Cost of Water & Sewer Maintenance (per year)



34%

Pop 35-64: One Type of Health Insurance



\$129,259

Median Home Value



87%

Household Owns or Leases Any Vehicle



26%

Household Spent \$1-\$99 in Average Week at Food Stores

# NOBLE COUNTY WITH PUBLIC WATER ACCESS

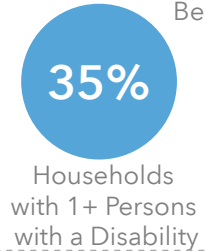
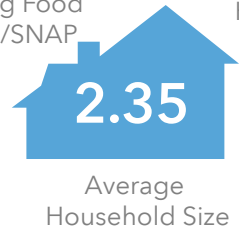
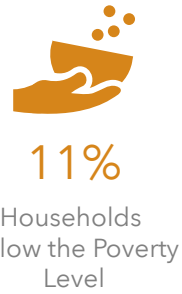
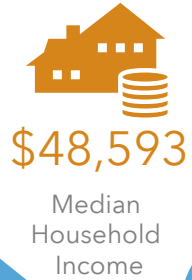
Noble\_Co\_With\_Water  
Area: 103.49 square miles

Source: Generalized drinking water coverage data overlay with U.S. Census Bureau, Census 2010 Summary File 1. Esri forecasts for 2021 and 2026. All survey-based estimates are subject to sampling error. The calculated population displayed with Census data measures the variability of the estimates.

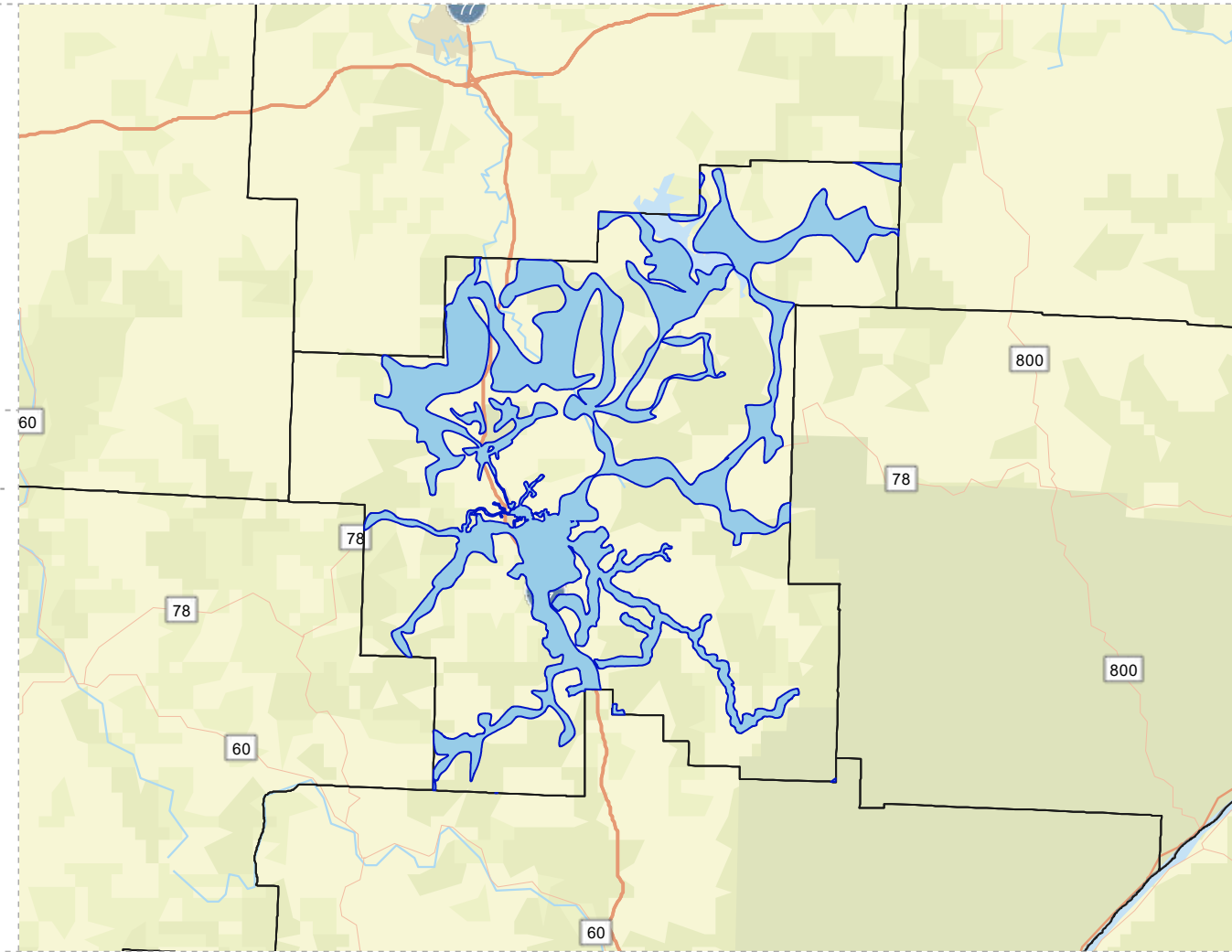
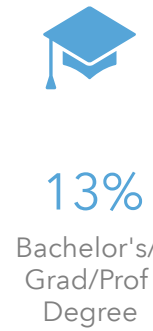
## POPULATION



## INCOME



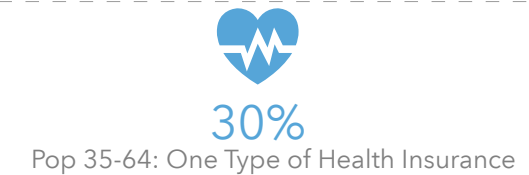
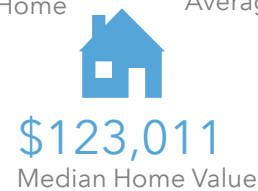
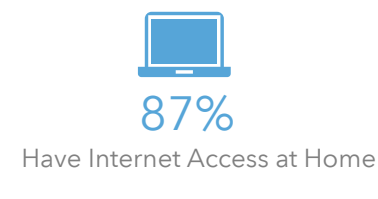
## EDUCATION



## EMPLOYMENT



## MISCELLANEOUS FACTS





# NOBLE COUNTY WITHOUT PUBLIC WATER ACCESS

Noble\_Co\_Without\_Water\_MERGE 1

Area: 301.08 square miles



Voinovich School of Leadership and Public Service

Source: Generalized drinking water coverage data overlay with U.S. Census Bureau, Census 2010 Summary File 1. Esri forecasts for 2021 and 2026. All survey-based estimates are subject to sampling error. The calculated population displayed with Census data measures the variability of the estimates.

## POPULATION



9,426

Total Population



55.0

Median Age

## INCOME



11%

Households Receiving Food Stamps/SNAP



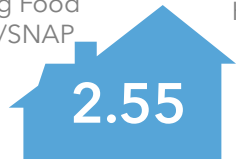
\$47,840

Median Household Income



12%

Households Below the Poverty Level



2.55

Average Household Size



38%

Households with 1+ Persons with a Disability

## EDUCATION



17%

No High School Diploma



47%

High School Graduate



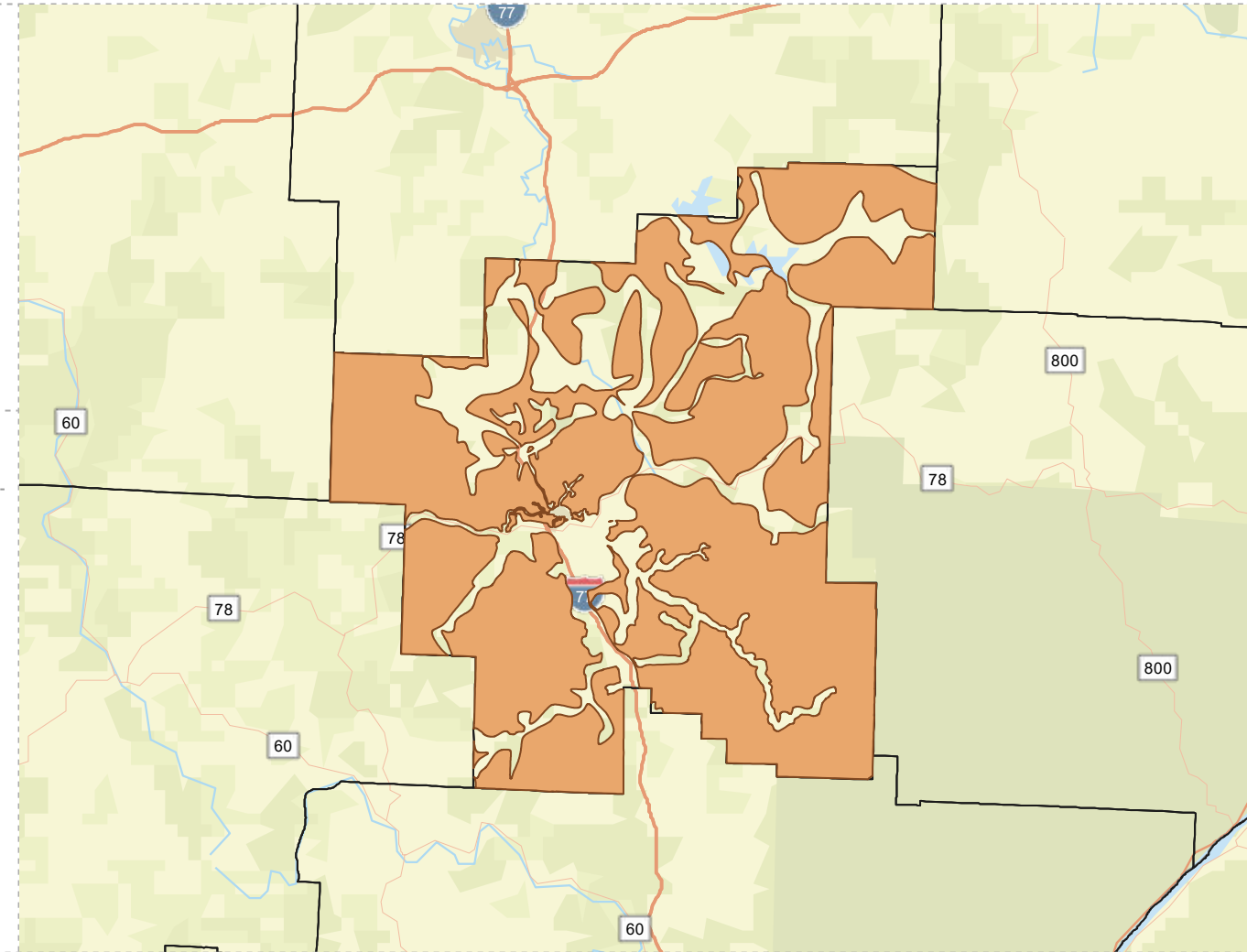
27%

Some College



9%

Bachelor's/ Grad/Prof Degree



## EMPLOYMENT



51%

White Collar



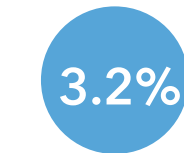
40%

Blue Collar



Services

10%



3.2%  
Unemployment Rate

## MISCELLANEOUS FACTS



85%

Have Internet Access at Home



\$463

Average Household Cost of Water & Sewer Maintenance (per year)



\$139,709

Median Home Value



90%

Household Owns or Leases Any Vehicle



30%

Pop 35-64: One Type of Health Insurance



25%

Household Spent \$1-\$99 in Average Week at Food Stores

# PERRY COUNTY WITH PUBLIC WATER ACCESS

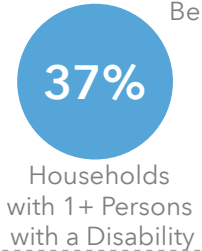
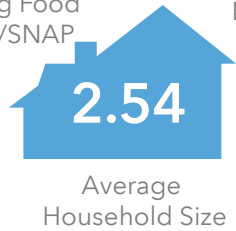
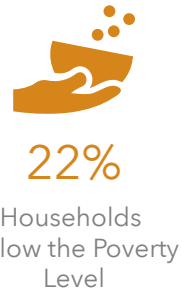
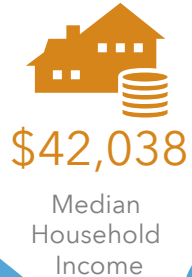
Perry\_Co\_With\_Water  
 Area: 113.56 square miles

Source: Generalized drinking water coverage data overlay with U.S. Census Bureau, Census 2010 Summary File 1. Esri forecasts for 2021 and 2026. All survey-based estimates are subject to sampling error. The calculated population displayed with Census data measures the variability of the estimates.

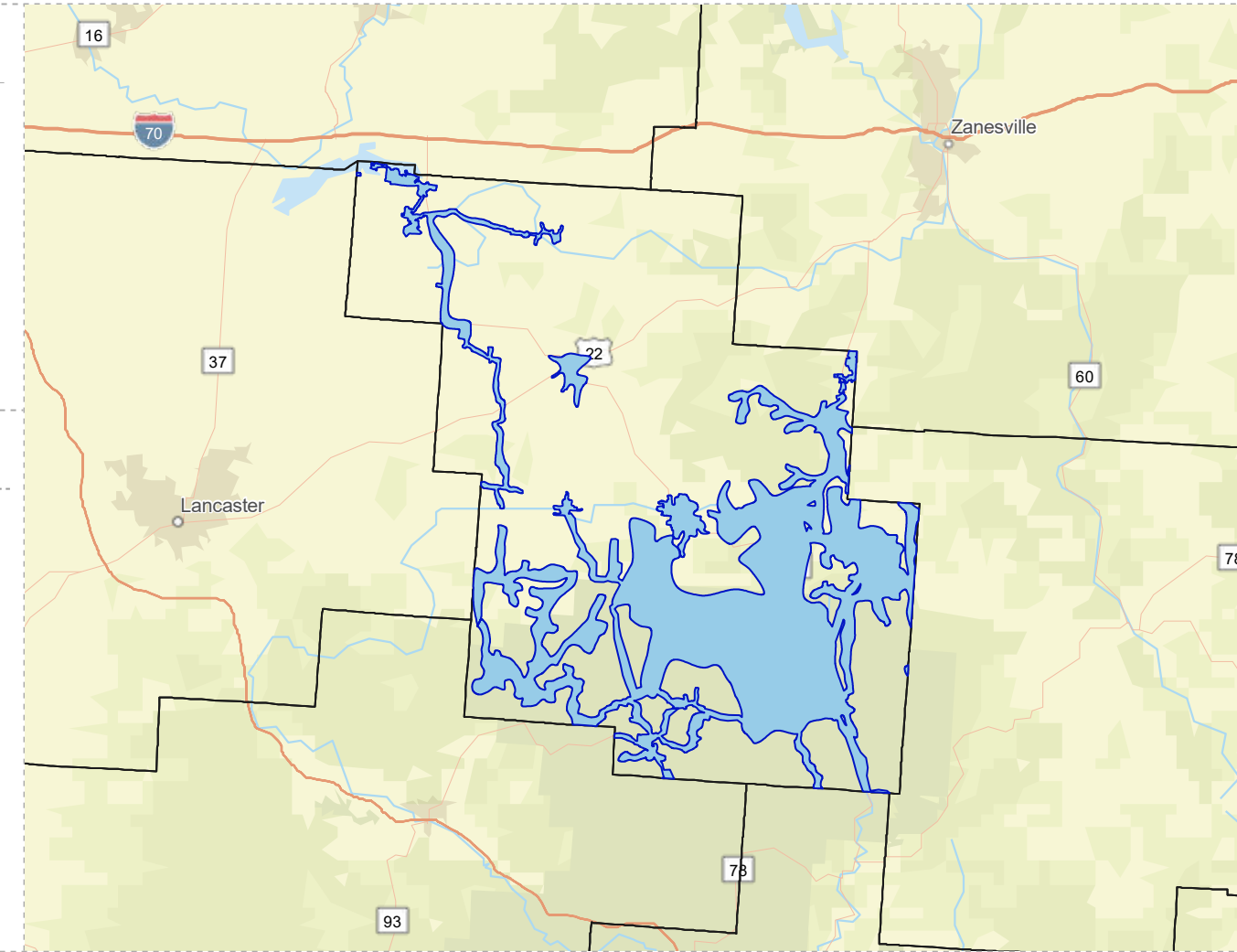
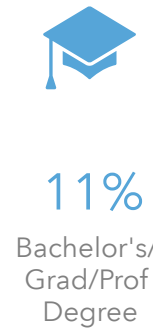
## POPULATION



## INCOME



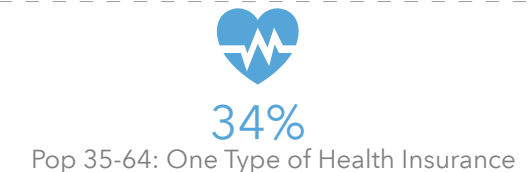
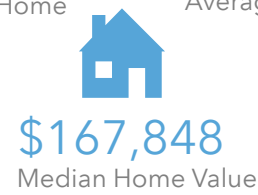
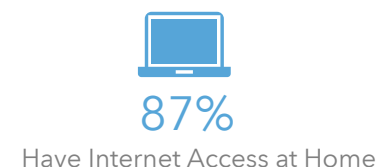
## EDUCATION



## EMPLOYMENT



## MISCELLANEOUS FACTS





# PERRY COUNTY WITHOUT WATER

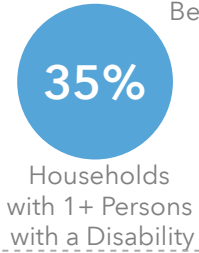
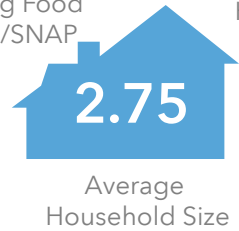
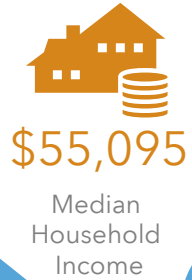
Perry\_Co\_Without\_Water  
Area: 298.93 square miles

Source: Generalized drinking water coverage data overlay with U.S. Census Bureau, Census 2010 Summary File 1. Esri forecasts for 2021 and 2026. All survey-based estimates are subject to sampling error. The calculated population displayed with Census data measures the variability of the estimates.

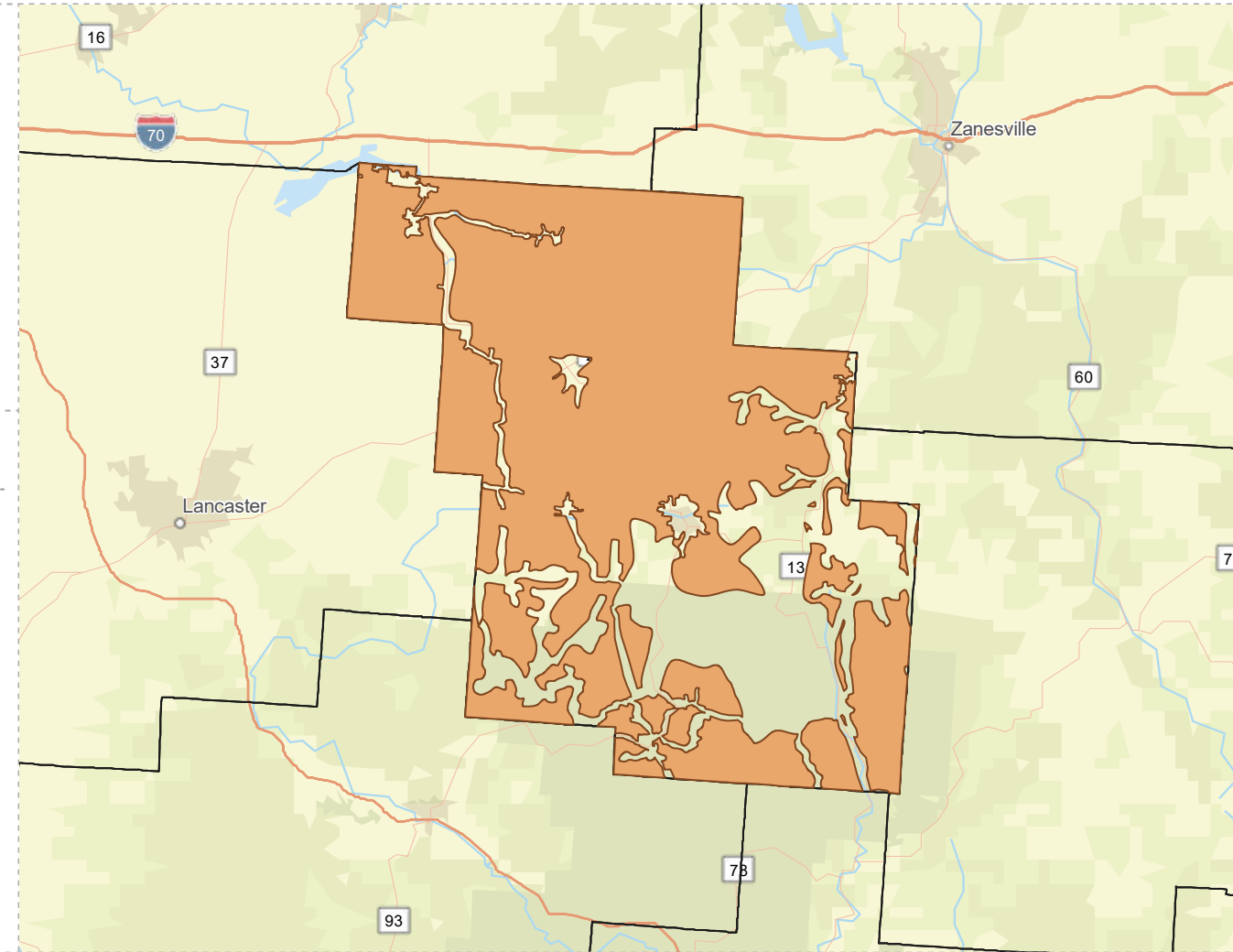
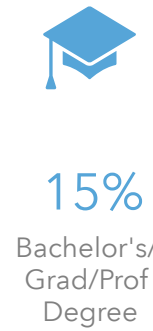
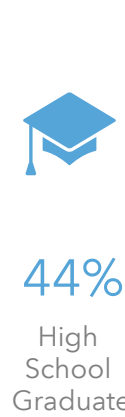
## POPULATION



## INCOME



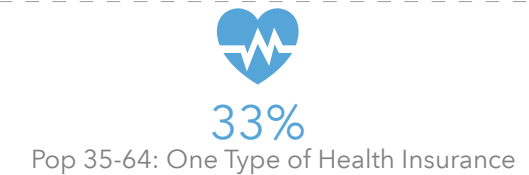
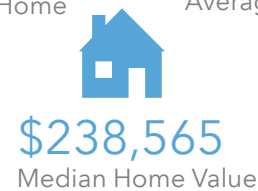
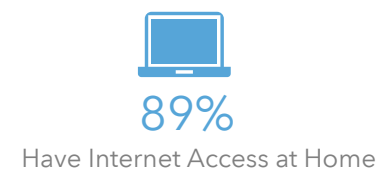
## EDUCATION



## EMPLOYMENT



## MISCELLANEOUS FACTS



# WASHINGTON COUNTY WITH PUBLIC WATER ACCESS

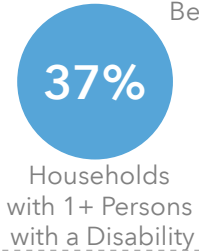
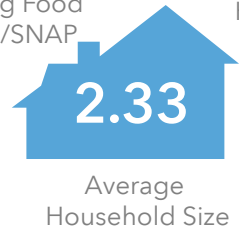
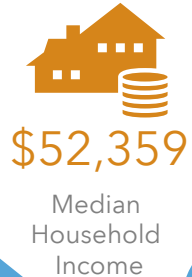
Washington\_With\_Water  
Area: 277.97 square miles

Source: Generalized drinking water coverage data overlay with U.S. Census Bureau, Census 2010 Summary File 1. Esri forecasts for 2021 and 2026. All survey-based estimates are subject to sampling error. The calculated population displayed with Census data measures the variability of the estimates.

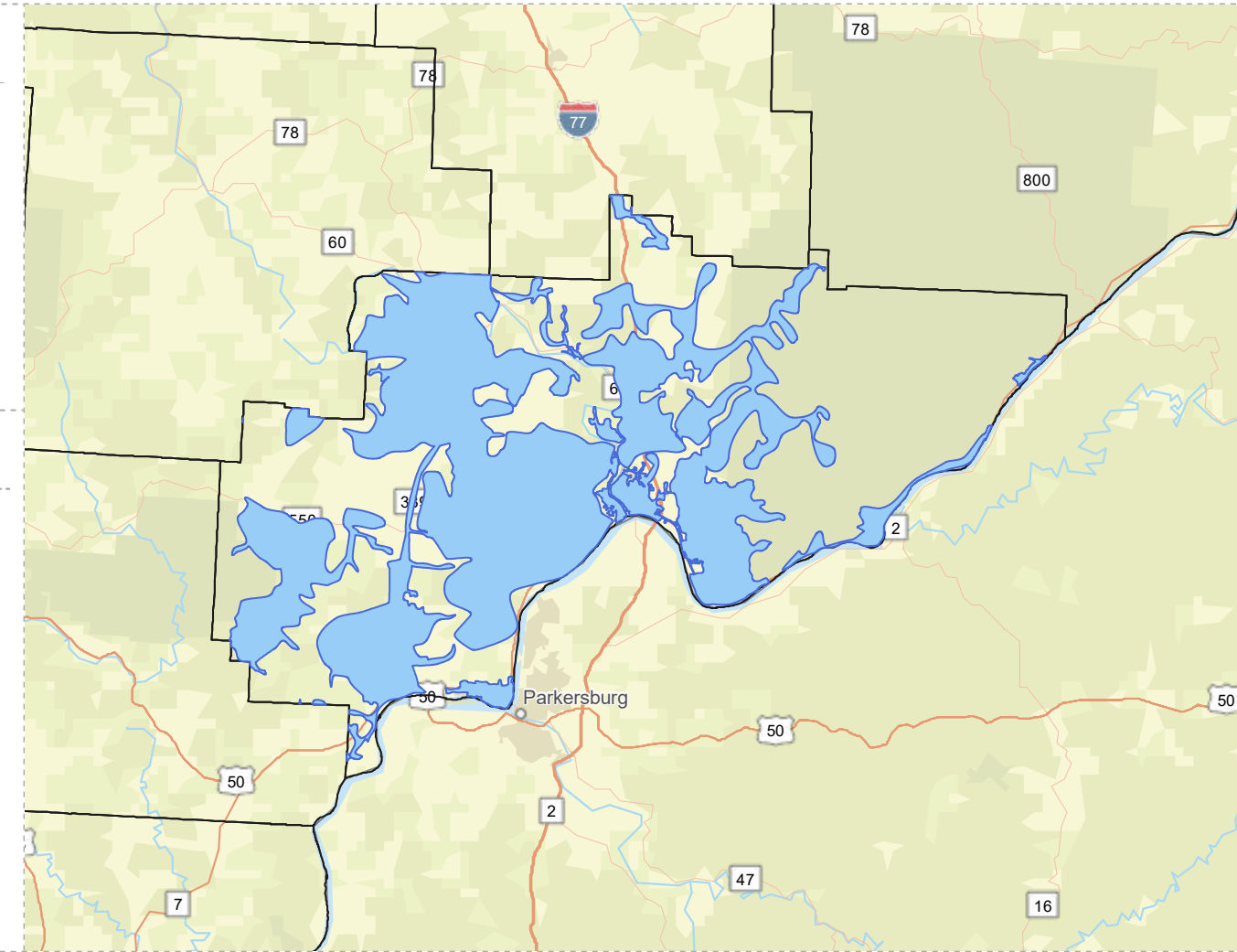
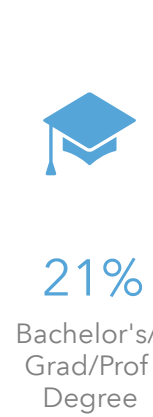
## POPULATION



## INCOME



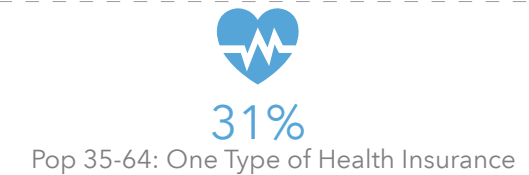
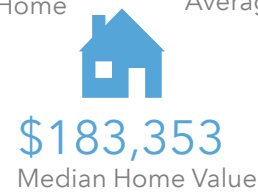
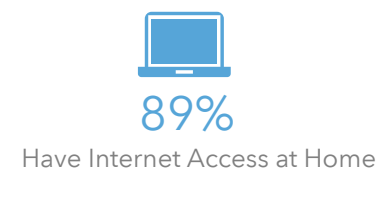
## EDUCATION



## EMPLOYMENT



## MISCELLANEOUS FACTS



# WASHINGTON COUNTY WITHOUT PUBLIC WATER ACCESS

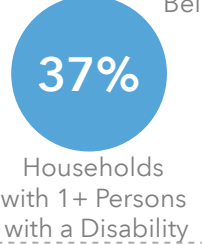
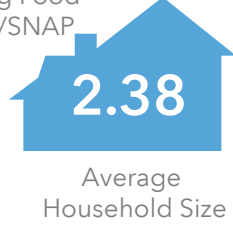
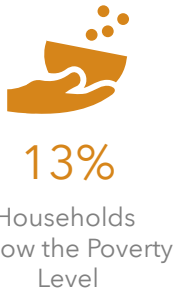
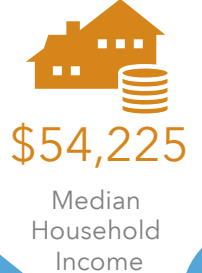
Washington\_Without\_Water  
 Area: 362.03 square miles

Source: Generalized drinking water coverage data overlay with U.S. Census Bureau, Census 2010 Summary File 1. Esri forecasts for 2021 and 2026. All survey-based estimates are subject to sampling error. The calculated population displayed with Census data measures the variability of the estimates.

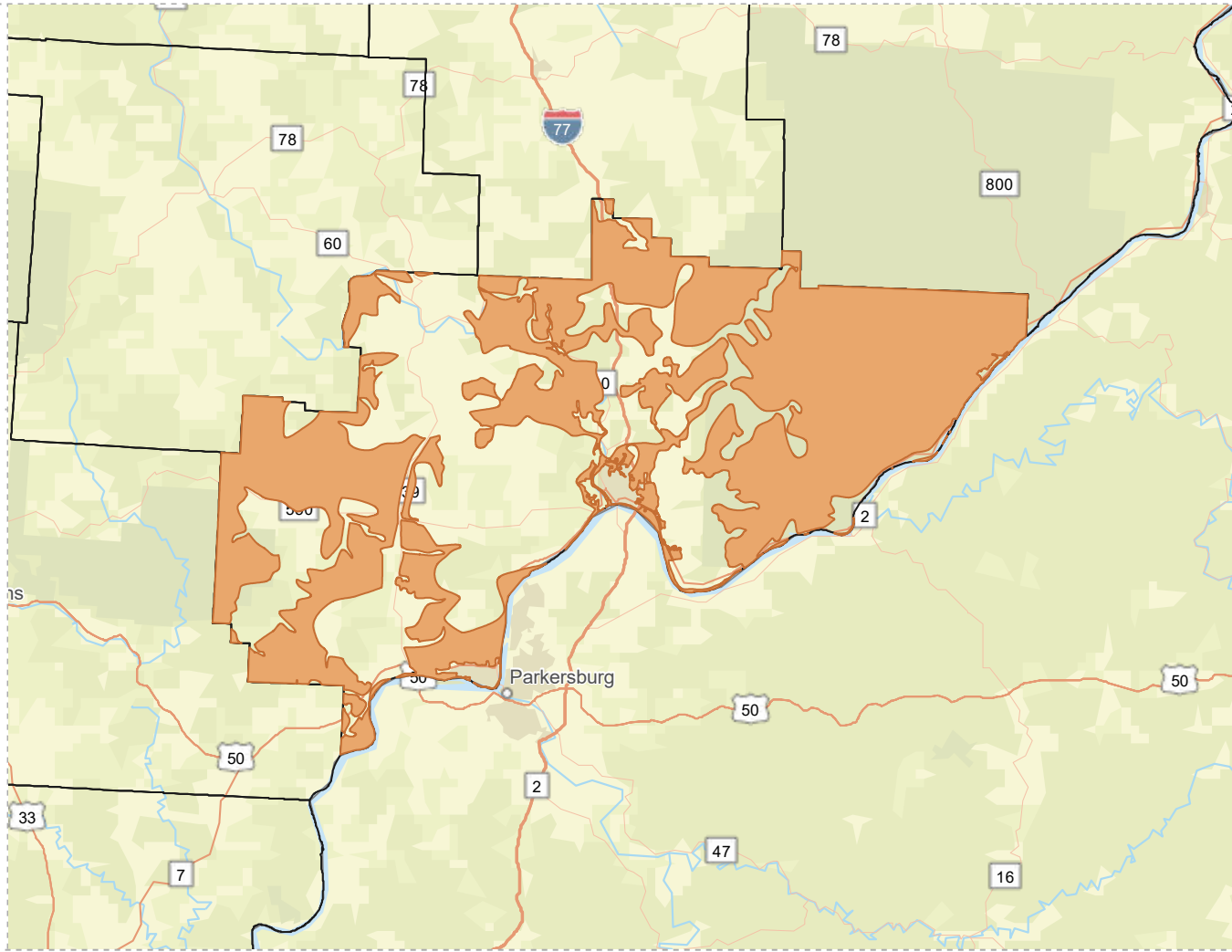
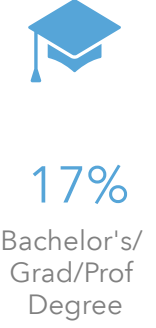
## POPULATION



## INCOME



## EDUCATION



## EMPLOYMENT



## MISCELLANEOUS FACTS

