

# Vinton County Generalized Water Coverage



Source: Ohio EPA, Community Water Systems coverage area data and/or line area data. Created by Ohio University Voinovich School June, 2022



# VINTON COUNTY WITH PUBLIC WATER ACCESS

Vinton\_Co\_With\_Water\_Merge

Area: 118.91 square miles



Voinovich School of Leadership and Public Service

Source: Generalized drinking water coverage data overlay with U.S. Census Bureau, Census 2010 Summary File 1. Esri forecasts for 2021 and 2026. All survey-based estimates are subject to sampling error. The calculated population displayed with Census data measures the variability of the estimates.

## POPULATION



6,081

Total Population



42.4

Median Age

## INCOME



25%

Households Receiving Food Stamps/SNAP



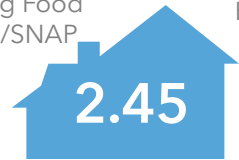
\$44,202

Median Household Income



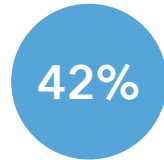
21%

Households Below the Poverty Level



2.45

Average Household Size



42%

Households with 1+ Persons with a Disability

## EMPLOYMENT



46%

White Collar



40%

Blue Collar



15%

Services



5.9%

Unemployment Rate

## EDUCATION



20%

No High School Diploma



42%

High School Graduate



23%

Some College



15%

Bachelor's/ Grad/Prof Degree

## MISCELLANEOUS FACTS



86%

Have Internet Access at Home



\$412

Average Household Cost of Water & Sewer Maintenance (per year)



35%

Pop 35-64: One Type of Health Insurance



\$102,579

Median Home Value



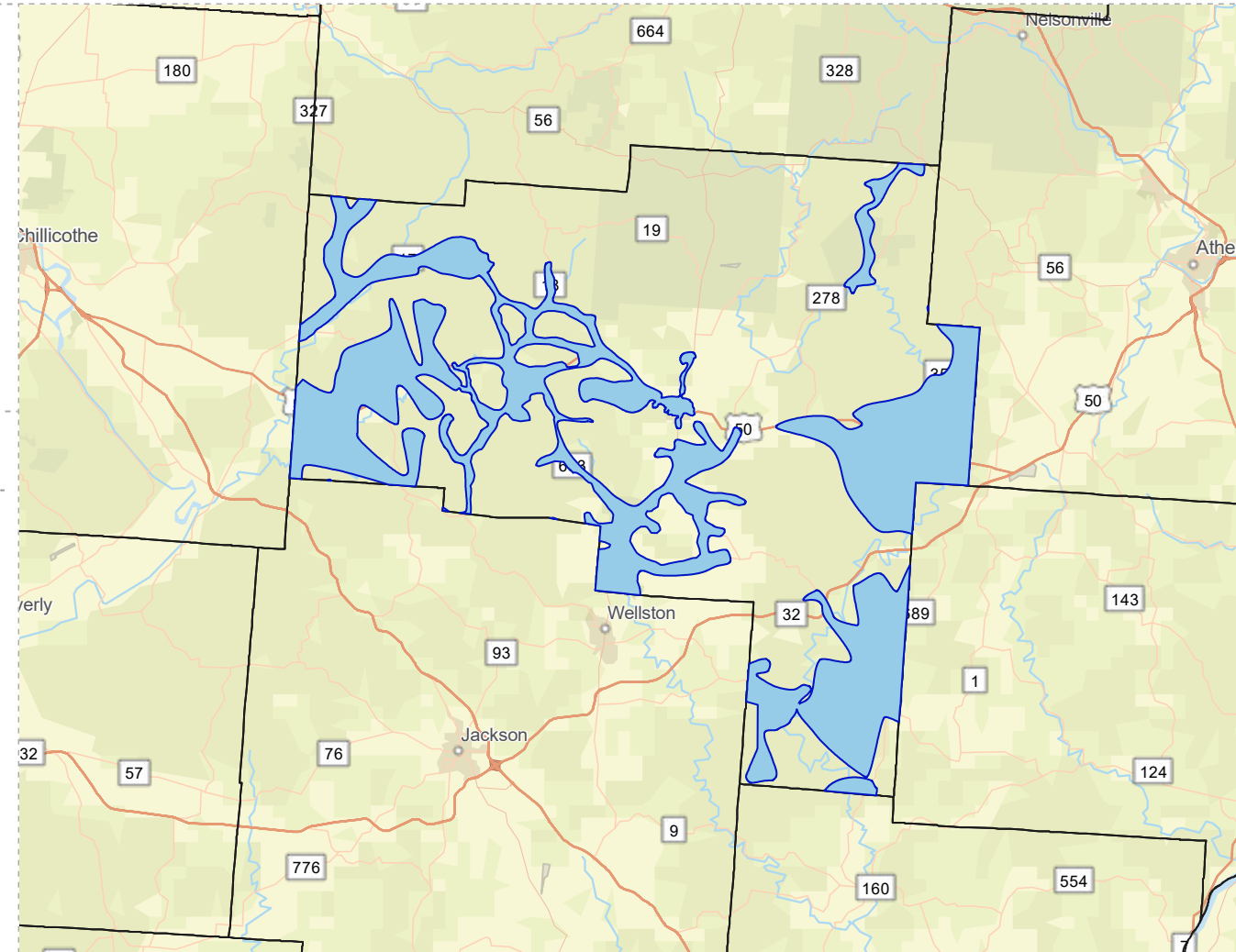
88%

Household Owns or Leases Any Vehicle



24%

Household Spent \$1-\$99 in Average Week at Food Stores



# VINTON COUNTY WITHOUT PUBLIC WATER ACCESS

Vinton\_Co\_Without\_Water\_Merge  
 Area: 296.07 square miles

Source: Generalized drinking water coverage data overlay with U.S. Census Bureau, Census 2010 Summary File 1. Esri forecasts for 2021 and 2026. All survey-based estimates are subject to sampling error. The calculated population displayed with Census data measures the variability of the estimates.

## POPULATION

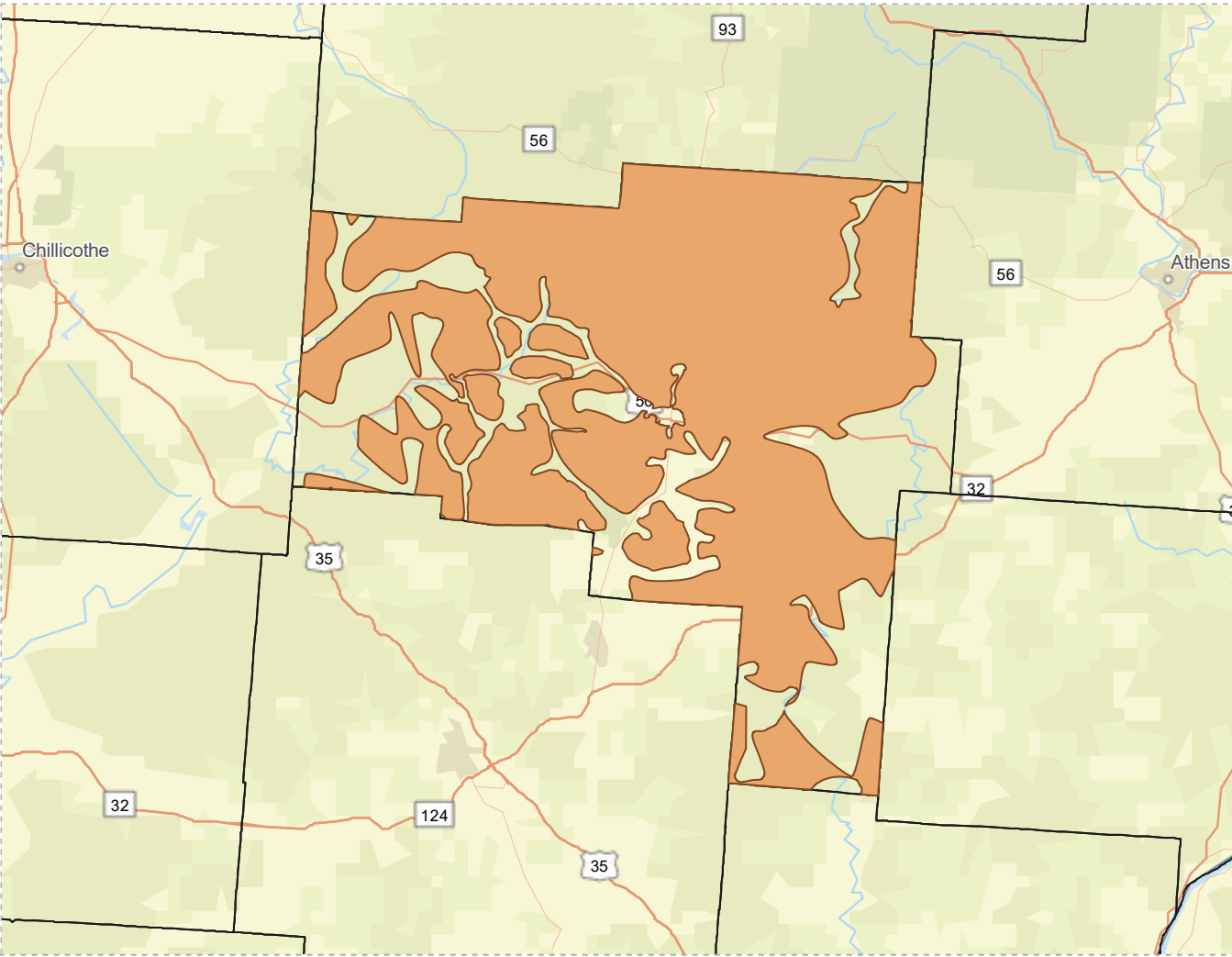


**7,574**  
 Total Population

**42.5**  
 Median Age

## INCOME

## EDUCATION



**22%**  
 Households Receiving Food Stamps/SNAP



**\$48,756**  
 Median Household Income



**17%**  
 Households Below the Poverty Level

**2.62**  
 Average Household Size

**40%**  
 Households with 1+ Persons with a Disability

**17%**  
 No High School Diploma

**44%**  
 High School Graduate



**26%**  
 Some College



**13%**  
 Bachelor's/Grad/Prof Degree

## EMPLOYMENT

## MISCELLANEOUS FACTS



**44%**  
 White Collar



**43%**  
 Blue Collar



**14%**  
 Services

**4.7%**  
 Unemployment Rate



**85%**  
 Have Internet Access at Home



**\$451**  
 Average Household Cost of Water & Sewer Maintenance (per year)



**\$116,648**  
 Median Home Value



**34%**  
 Pop 35-64: One Type of Health Insurance



**89%**  
 Household Owns or Leases Any Vehicle



**24%**  
 Household Spent \$1-\$99 in Average Week at Food Stores