

- Tuscarawas Co With Water
- Tuscarawas Co Without Water

Tuscarawas County Generalized Water Coverage



Source: Ohio EPA, Community Water Systems coverage area data and/or line area data. Created by Ohio University Voinovich School June, 2022

TUSCARAWAS COUNTY WITH PUBLIC WATER ACCESS

Tuscarawas_Co_With_Water

Area: 49.39 square miles



Voinovich School of Leadership and Public Service

Source: Generalized drinking water coverage data overlay with U.S. Census Bureau, Census 2010 Summary File 1. Esri forecasts for 2021 and 2026. All survey-based estimates are subject to sampling error. The calculated population displayed with Census data measures the variability of the estimates.

POPULATION



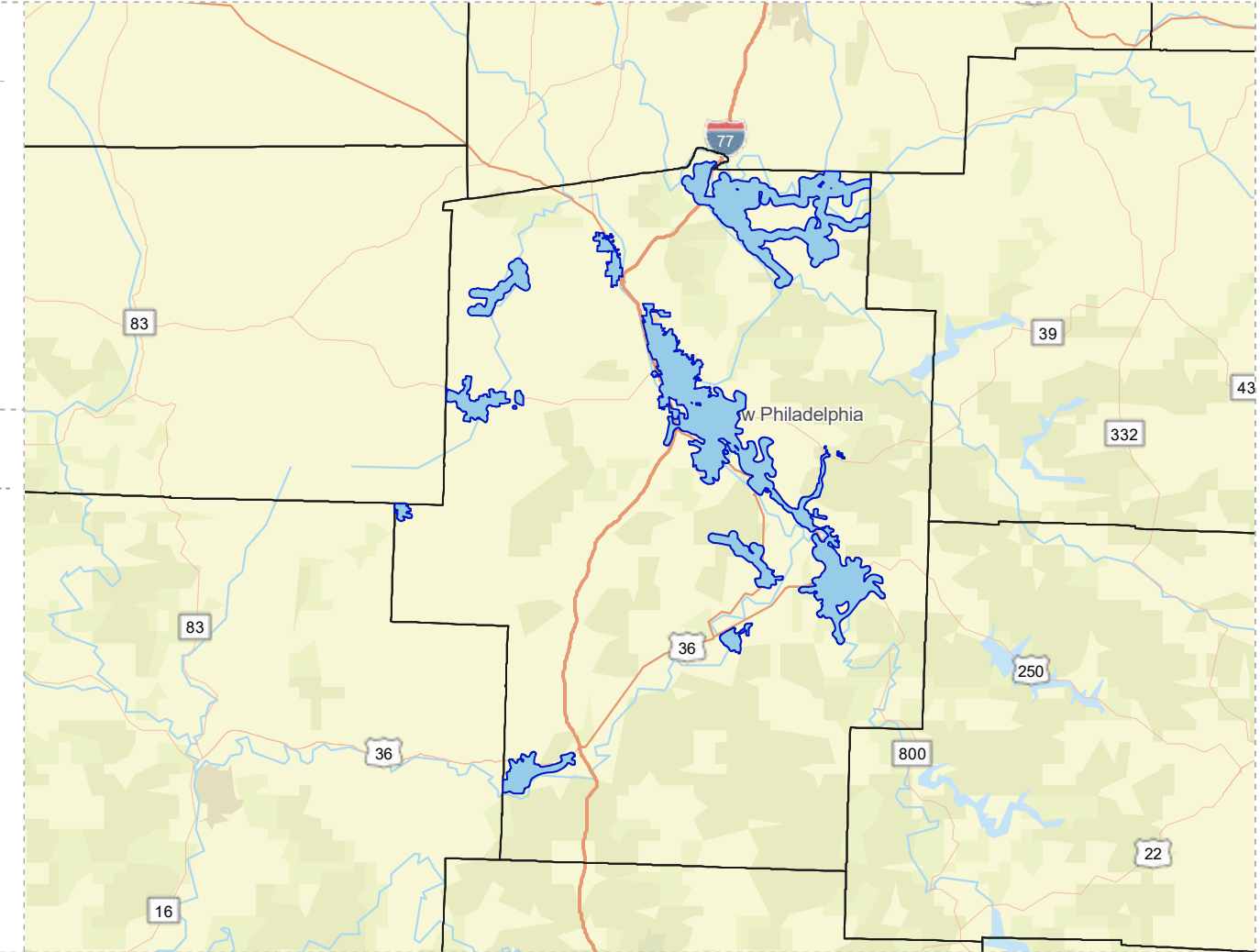
56,945

Total Population



42.6

Median Age



INCOME



16%

Households Receiving Food Stamps/SNAP



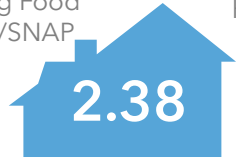
\$50,840

Median Household Income



15%

Households Below the Poverty Level



2.38

Average Household Size



29%

Households with 1+ Persons with a Disability

EMPLOYMENT



55%

White Collar



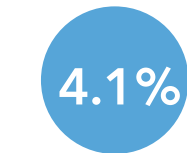
34%

Blue Collar



Services

11%



4.1%
Unemployment Rate

EDUCATION



13%
No High School Diploma



43%

High School Graduate



25%

Some College



19%

Bachelor's/ Grad/Prof Degree

MISCELLANEOUS FACTS



89%

Have Internet Access at Home



\$441

Average Household Cost of Water & Sewer Maintenance (per year)



\$159,327

Median Home Value



89%

Household Owns or Leases Any Vehicle



30%

Pop 35-64: One Type of Health Insurance



22%

Household Spent \$1-\$99 in Average Week at Food Stores

TUSCARAWAS COUNTY WITHOUT PUBLIC WATER ACCESS

Tuscarawas_Co_Without_Water
Area: 522.06 square miles

Source: Generalized drinking water coverage data overlay with U.S. Census Bureau, Census 2010 Summary File 1. Esri forecasts for 2021 and 2026. All survey-based estimates are subject to sampling error. The calculated population displayed with Census data measures the variability of the estimates.

POPULATION



35,798

Total Population



43.4

Median Age

INCOME



8%

Households Receiving Food Stamps/SNAP



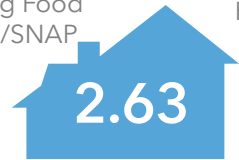
\$58,735

Median Household Income



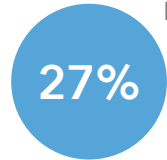
9%

Households Below the Poverty Level



2.63

Average Household Size



27%

Households with 1+ Persons with a Disability

EMPLOYMENT



52%

White Collar



40%

Blue Collar



8%

Services



2.6%

Unemployment Rate

EDUCATION



14%

No High School Diploma



46%

High School Graduate



22%

Some College



18%

Bachelor's/ Grad/Prof Degree

MISCELLANEOUS FACTS



89%

Have Internet Access at Home



\$519

Average Household Cost of Water & Sewer Maintenance (per year)



35%

Pop 35-64: One Type of Health Insurance



\$210,612

Median Home Value



92%

Household Owns or Leases Any Vehicle



21%

Household Spent \$1-\$99 in Average Week at Food Stores

