

- Ross Co With Water
- Ross Co Without Water

Ross County Generalized Water Coverage



Source: Ohio EPA, Community Water Systems coverage area data and/or line area data. Created by Ohio University Voinovich School June, 2022

ROSS COUNTY WITH PUBLIC WATER ACCESS

Ross_Co_With_Water

Area: 425.26 square miles

Source: Generalized drinking water coverage data overlay with U.S. Census Bureau, Census 2010 Summary File 1. Esri forecasts for 2021 and 2026. All survey-based estimates are subject to sampling error. The calculated population displayed with Census data measures the variability of the estimates.

POPULATION



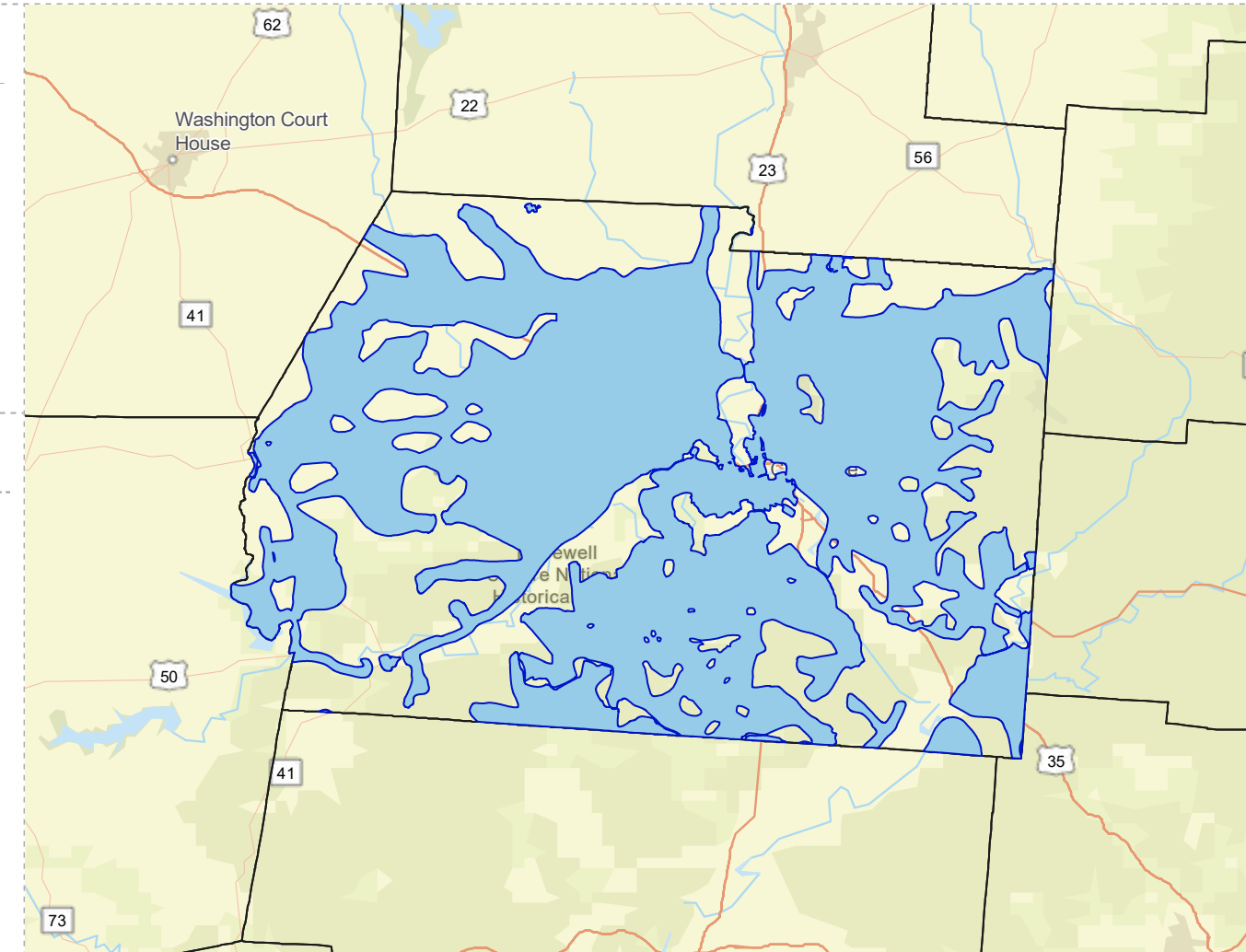
67,459

Total Population



41.7

Median Age



INCOME



21%

Households Receiving Food Stamps/SNAP



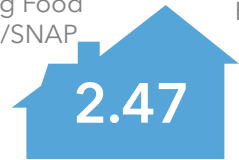
\$53,865

Median Household Income



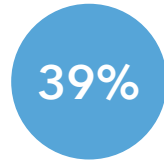
16%

Households Below the Poverty Level



2.47

Average Household Size



39%

Households with 1+ Persons with a Disability

EDUCATION



12%

No High School Diploma



42%

High School Graduate



29%

Some College



17%

Bachelor's/ Grad/Prof Degree

EMPLOYMENT



58%

White Collar



28%

Blue Collar



Services

13%



5.0%

Unemployment Rate

MISCELLANEOUS FACTS



88%

Have Internet Access at Home



\$487

Average Household Cost of Water & Sewer Maintenance (per year)



\$167,888

Median Home Value



89%

Household Owns or Leases Any Vehicle



33%

Pop 35-64: One Type of Health Insurance



21%

Household Spent \$1-\$99 in Average Week at Food Stores

ROSS COUNTY WITHOUT PUBLIC WATER ACCESS

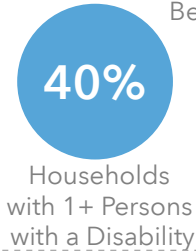
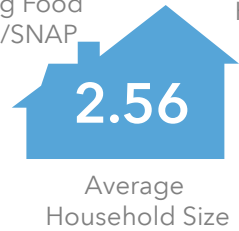
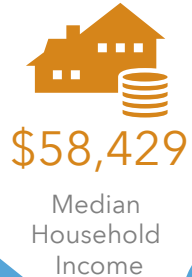
Ross_Co_Without_Water
Area: 267.77 square miles

Source: Generalized drinking water coverage data overlay with U.S. Census Bureau, Census 2010 Summary File 1. Esri forecasts for 2021 and 2026. All survey-based estimates are subject to sampling error. The calculated population displayed with Census data measures the variability of the estimates.

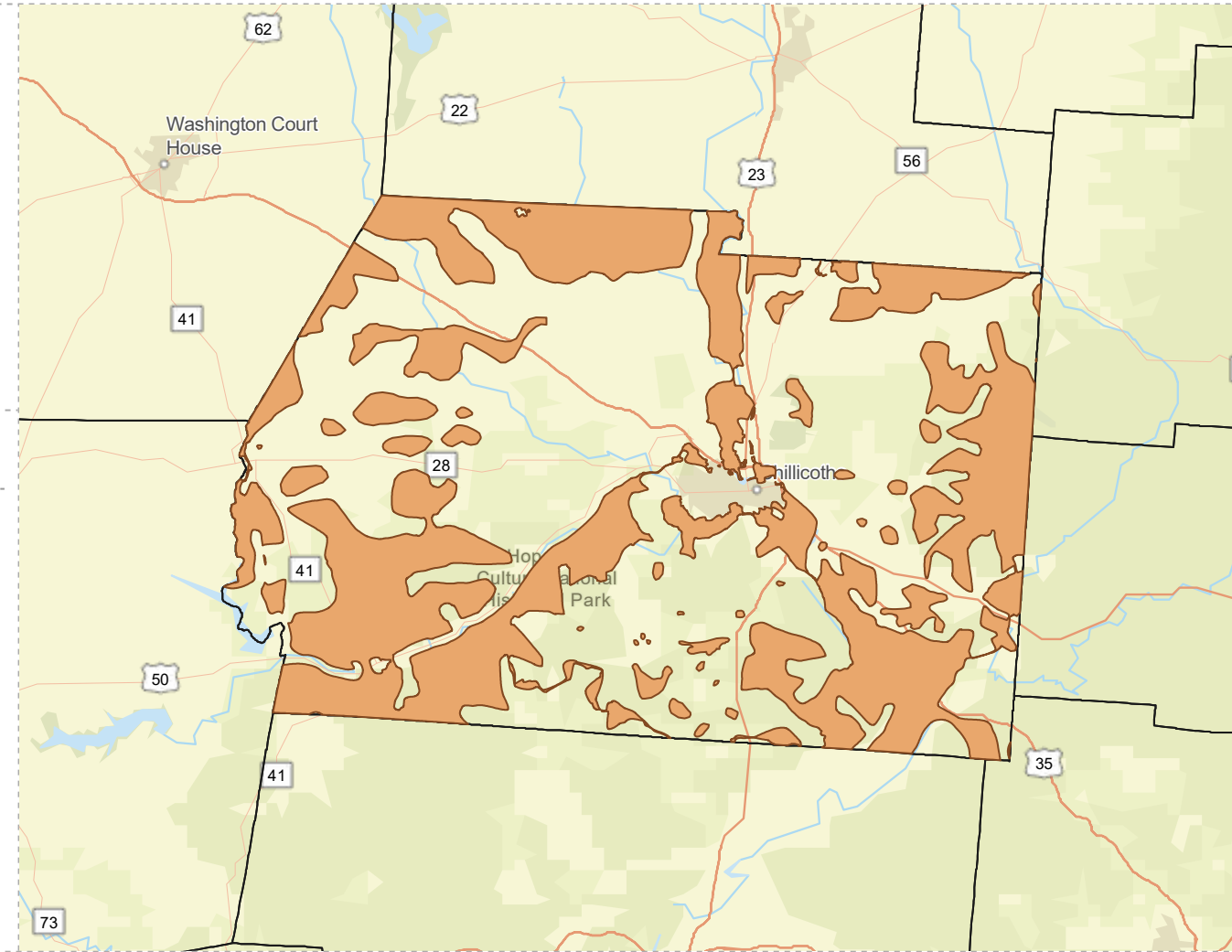
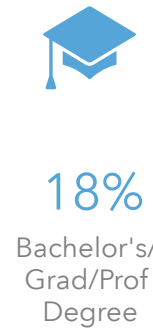
POPULATION



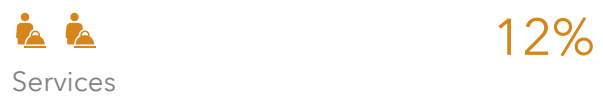
INCOME



EDUCATION



EMPLOYMENT



MISCELLANEOUS FACTS

