

Perry County Generalized Water Coverage



Source: Ohio EPA, Community Water Systems coverage area data and/or line area data. Created by Ohio University Voinovich School June, 2022

PERRY COUNTY WITH PUBLIC WATER ACCESS

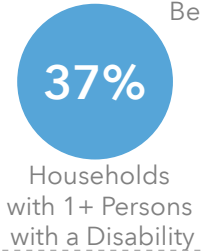
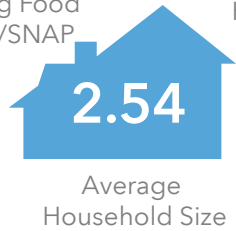
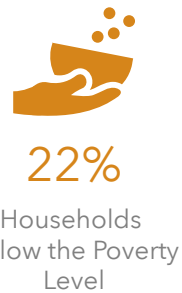
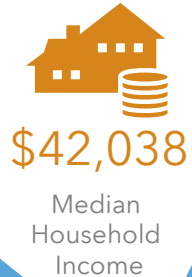
Perry_Co_With_Water
 Area: 113.56 square miles

Source: Generalized drinking water coverage data overlay with U.S. Census Bureau, Census 2010 Summary File 1. Esri forecasts for 2021 and 2026. All survey-based estimates are subject to sampling error. The calculated population displayed with Census data measures the variability of the estimates.

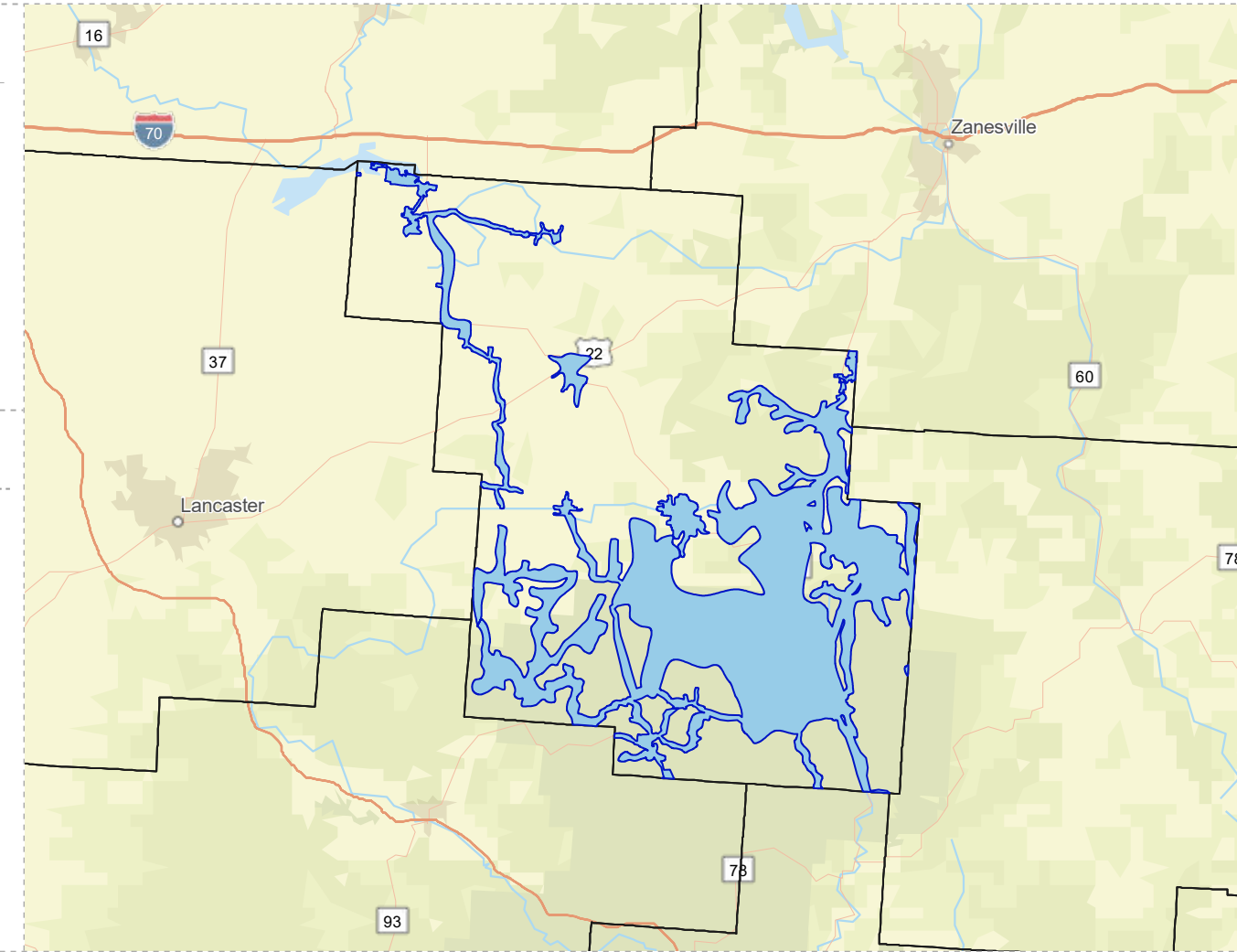
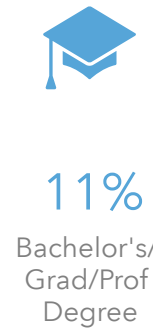
POPULATION



INCOME



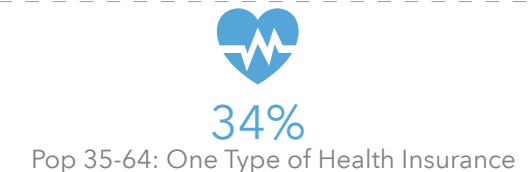
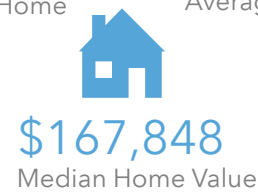
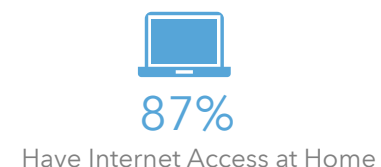
EDUCATION



EMPLOYMENT



MISCELLANEOUS FACTS



PERRY COUNTY WITHOUT WATER

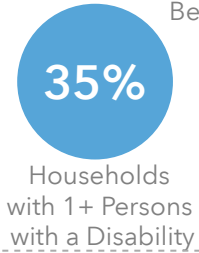
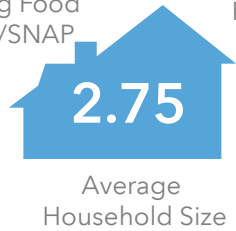
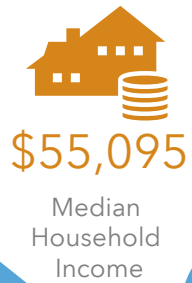
Perry_Co_Without_Water
Area: 298.93 square miles

Source: Generalized drinking water coverage data overlay with U.S. Census Bureau, Census 2010 Summary File 1. Esri forecasts for 2021 and 2026. All survey-based estimates are subject to sampling error. The calculated population displayed with Census data measures the variability of the estimates.

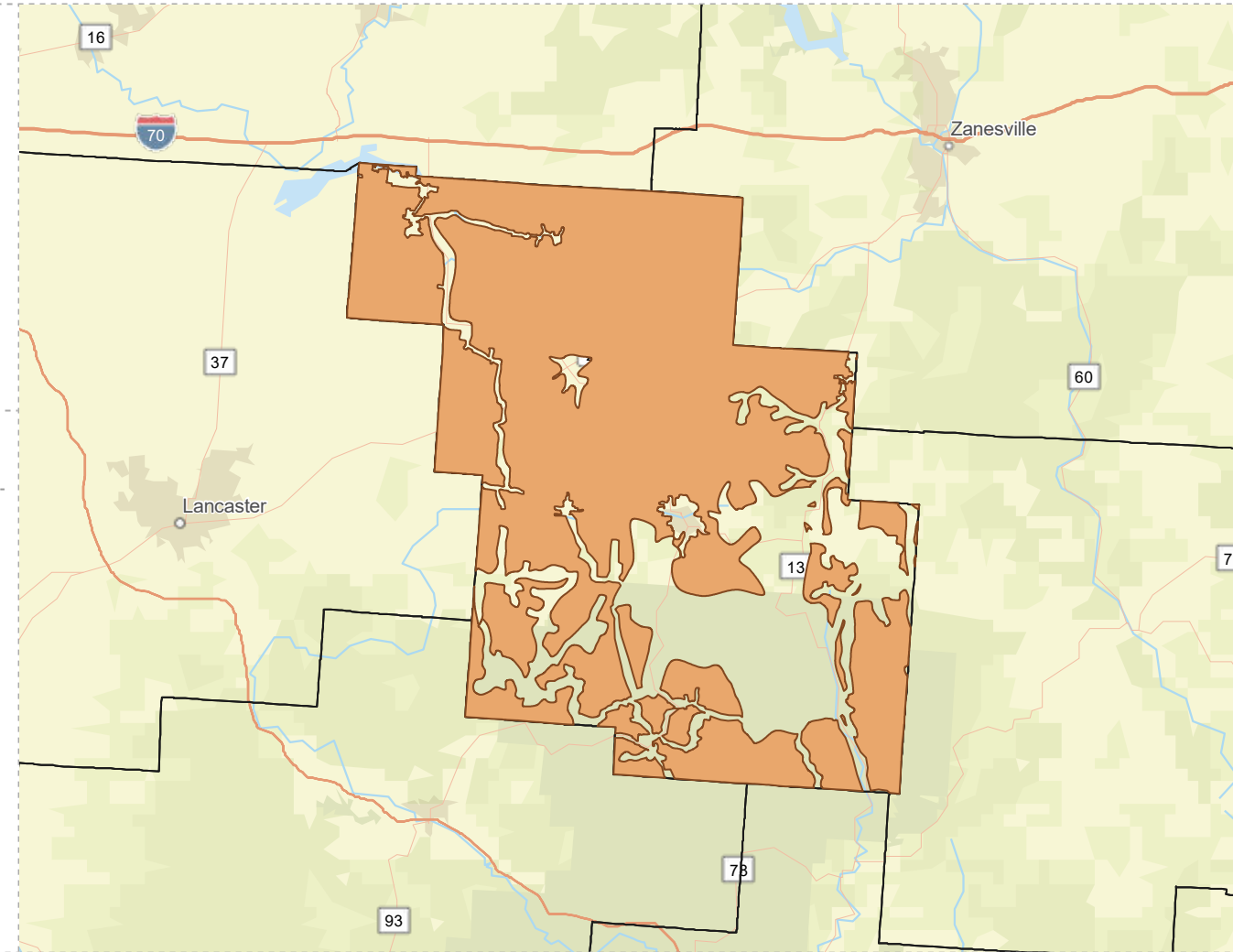
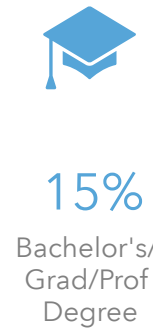
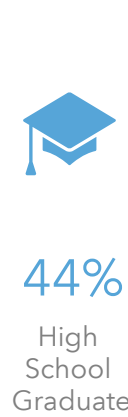
POPULATION



INCOME



EDUCATION



EMPLOYMENT



MISCELLANEOUS FACTS

