

# Noble County Generalized Water Coverage



Source: Ohio EPA, Community Water Systems coverage area data and/or line area data. Created by Ohio University Voinovich School June, 2022



# NOBLE COUNTY WITH PUBLIC WATER ACCESS

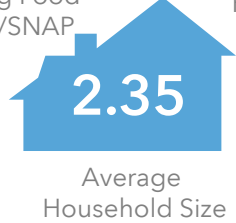
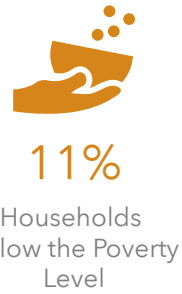
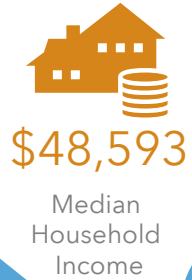
Noble\_Co\_With\_Water  
Area: 103.49 square miles

Source: Generalized drinking water coverage data overlay with U.S. Census Bureau, Census 2010 Summary File 1. Esri forecasts for 2021 and 2026. All survey-based estimates are subject to sampling error. The calculated population displayed with Census data measures the variability of the estimates.

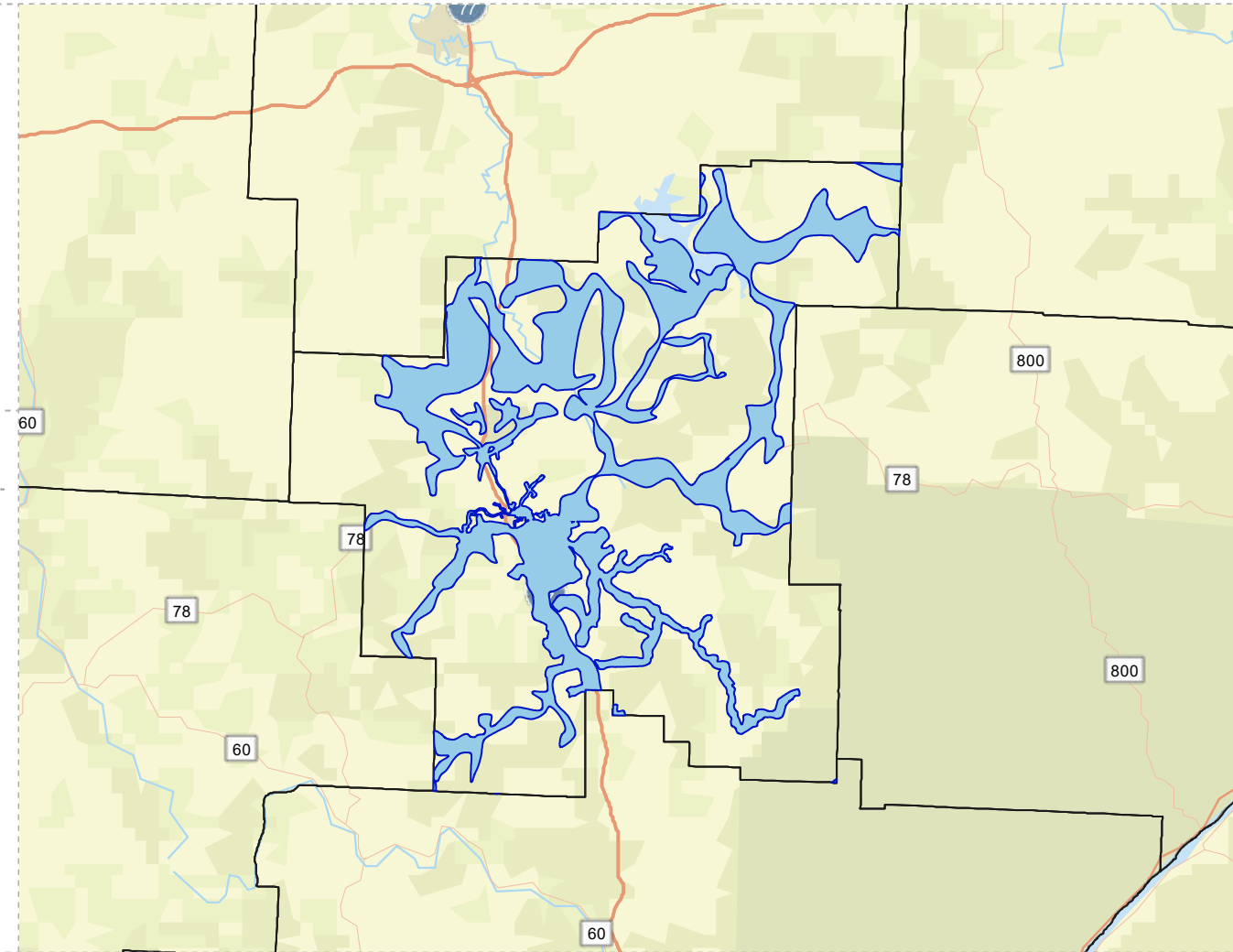
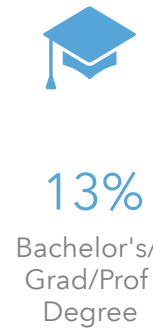
## POPULATION



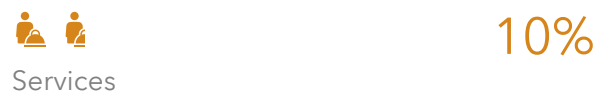
## INCOME



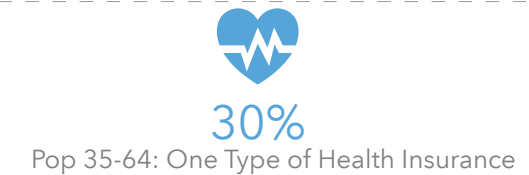
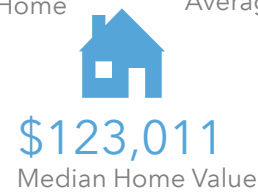
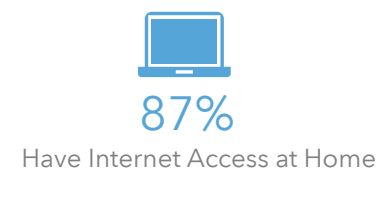
## EDUCATION



## EMPLOYMENT



## MISCELLANEOUS FACTS



# NOBLE COUNTY WITHOUT PUBLIC WATER ACCESS

Noble\_Co\_Without\_Water\_MERGE 1

Area: 301.08 square miles



Voinovich School of Leadership and Public Service

Source: Generalized drinking water coverage data overlay with U.S. Census Bureau, Census 2010 Summary File 1. Esri forecasts for 2021 and 2026. All survey-based estimates are subject to sampling error. The calculated population displayed with Census data measures the variability of the estimates.

## POPULATION



9,426

Total Population



Median Age

## INCOME



11%

Households Receiving Food Stamps/SNAP



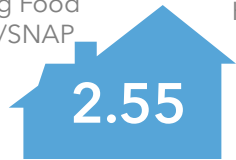
\$47,840

Median Household Income

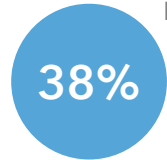


12%

Households Below the Poverty Level



Average Household Size



Households with 1+ Persons with a Disability

## EDUCATION

17%

No High School Diploma



47%

High School Graduate



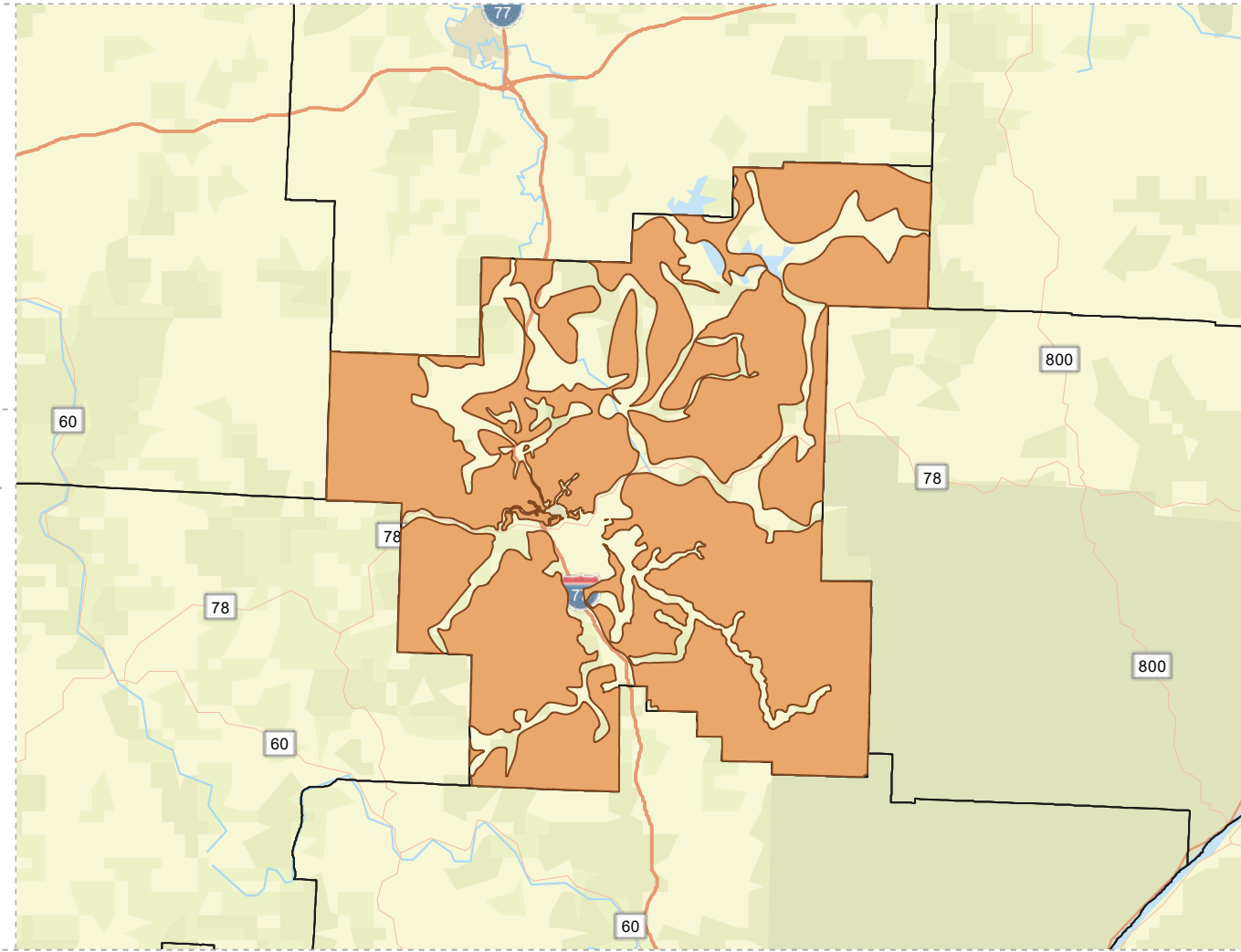
27%

Some College



9%

Bachelor's/ Grad/Prof Degree



## EMPLOYMENT



51%

White Collar



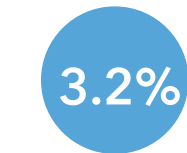
40%

Blue Collar



Services

10%



Unemployment Rate

## MISCELLANEOUS FACTS



85%

Have Internet Access at Home



\$463

Average Household Cost of Water & Sewer Maintenance (per year)



30%

Pop 35-64: One Type of Health Insurance



\$139,709

Median Home Value



90%

Household Owns or Leases Any Vehicle



25%

Household Spent \$1-\$99 in Average Week at Food Stores