

Muskingum County Water Access



Source: Ohio EPA, Community Water Systems coverage area data and/or line area data. Created by Ohio University Voinovich School June, 2022

MUSKINGUM COUNTY WITH PUBLIC WATER ACCESS

Muskingum_Co_With_Water_Merge

Area: 140.63 square miles



Voinovich School of Leadership and Public Service

Source: Generalized drinking water coverage data overlay with U.S. Census Bureau, Census 2010 Summary File 1. Esri forecasts for 2021 and 2026. All survey-based estimates are subject to sampling error. The calculated population displayed with Census data measures the variability of the estimates.

POPULATION



63,198

Total Population



41.4

Median Age

INCOME



22%

Households Receiving Food Stamps/SNAP



\$49,172

Median Household Income



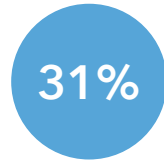
17%

Households Below the Poverty Level



2.40

Average Household Size



31%

Households with 1+ Persons with a Disability

EMPLOYMENT



59%

White Collar



29%

Blue Collar



Services

12%



5.3%

Unemployment Rate

EDUCATION



11%

No High School Diploma



40%

High School Graduate



31%

Some College



18%

Bachelor's/ Grad/Prof Degree

MISCELLANEOUS FACTS



89%

Have Internet Access at Home



\$442

Average Household Cost of Water & Sewer Maintenance (per year)



32%

Pop 35-64: One Type of Health Insurance



\$158,451

Median Home Value



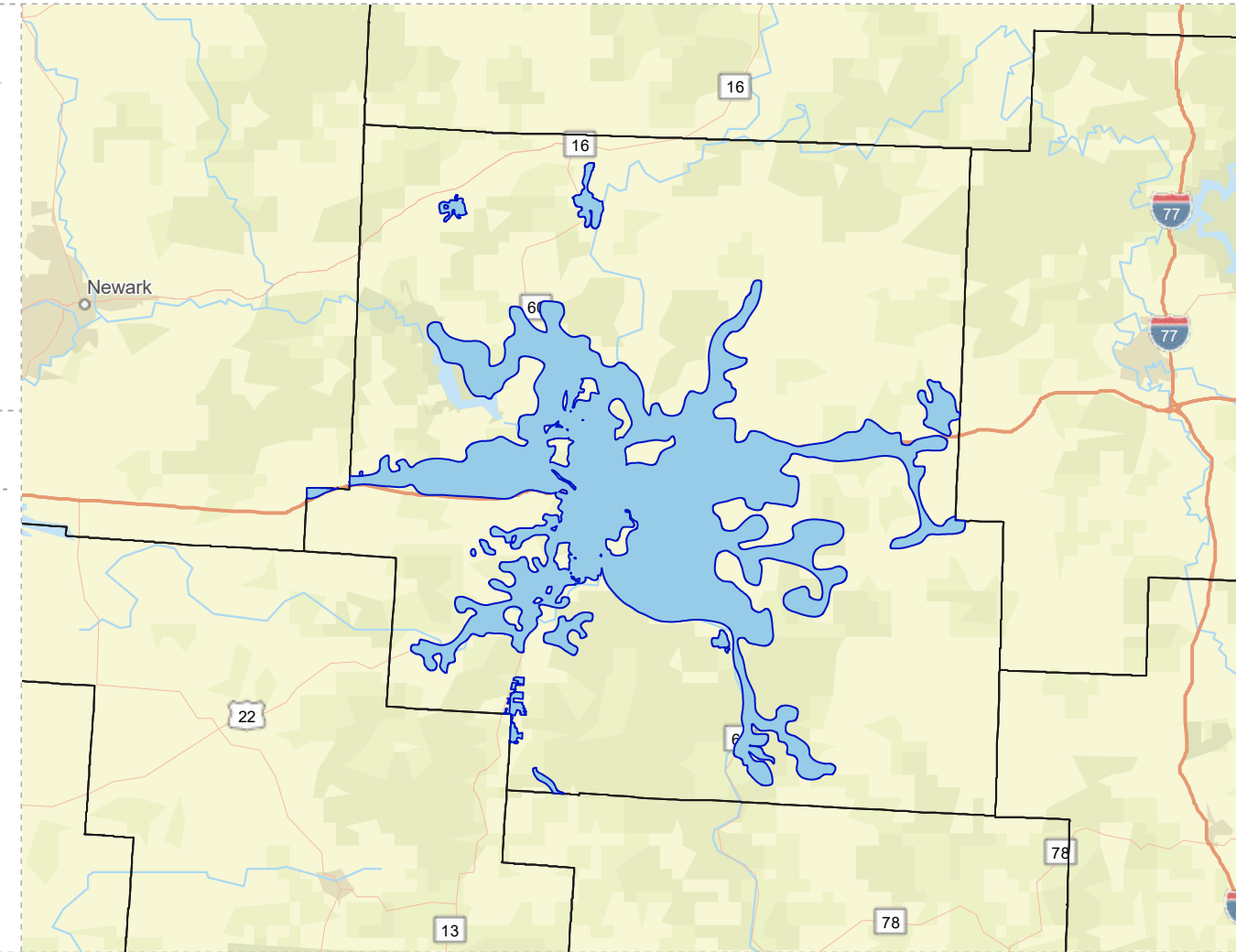
84%

Household Owns or Leases Any Vehicle



22%

Household Spent \$1-\$99 in Average Week at Food Stores



MUSKINGUM COUNTY WITHOUT PUBLIC WATER ACCESS

Muskingum_Co_Without_Water

Area: 531.95 square miles



Voinovich School of Leadership and Public Service

Source: Generalized drinking water coverage data overlay with U.S. Census Bureau, Census 2010 Summary File 1. Esri forecasts for 2021 and 2026. All survey-based estimates are subject to sampling error. The calculated population displayed with Census data measures the variability of the estimates.

POPULATION



23,389

Total Population



42.4

Median Age

INCOME



12%

Households Receiving Food Stamps/SNAP



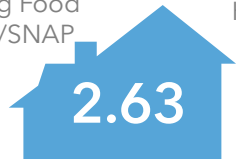
\$56,639

Median Household Income



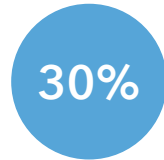
9%

Households Below the Poverty Level



2.63

Average Household Size



30%

Households with 1+ Persons with a Disability

EMPLOYMENT



54%

White Collar



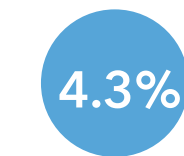
36%

Blue Collar



Services

10%



4.3%
Unemployment Rate

EDUCATION



12%
No High School Diploma



43%

High School Graduate



29%

Some College



16%

Bachelor's/ Grad/Prof Degree

MISCELLANEOUS FACTS



90%

Have Internet Access at Home



\$508

Average Household Cost of Water & Sewer Maintenance (per year)



34%

Pop 35-64: One Type of Health Insurance



\$180,983

Median Home Value



92%

Household Owns or Leases Any Vehicle



20%

Household Spent \$1-\$99 in Average Week at Food Stores

