

- Morgan Co With Water
- Morgan Co Without Water

# Morgan County Generalized Water Coverage



Source: Ohio EPA, Community Water Systems coverage area data and/or line area data. Created by Ohio University Voinovich School June, 2022

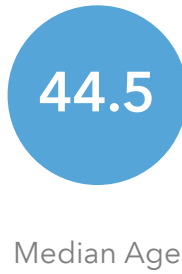


# MORGAN COUNTY WITH PUBLIC WATER ACCESS

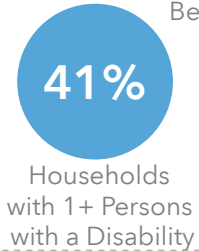
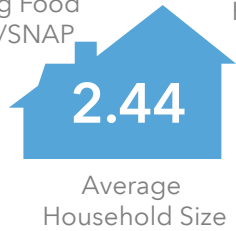
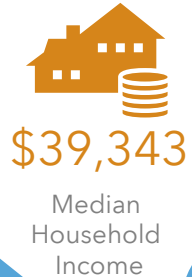
Morgan\_Co\_With\_Water  
Area: 77.71 square miles

Source: Generalized drinking water coverage data overlay with U.S. Census Bureau, Census 2010 Summary File 1. Esri forecasts for 2021 and 2026. All survey-based estimates are subject to sampling error. The calculated population displayed with Census data measures the variability of the estimates.

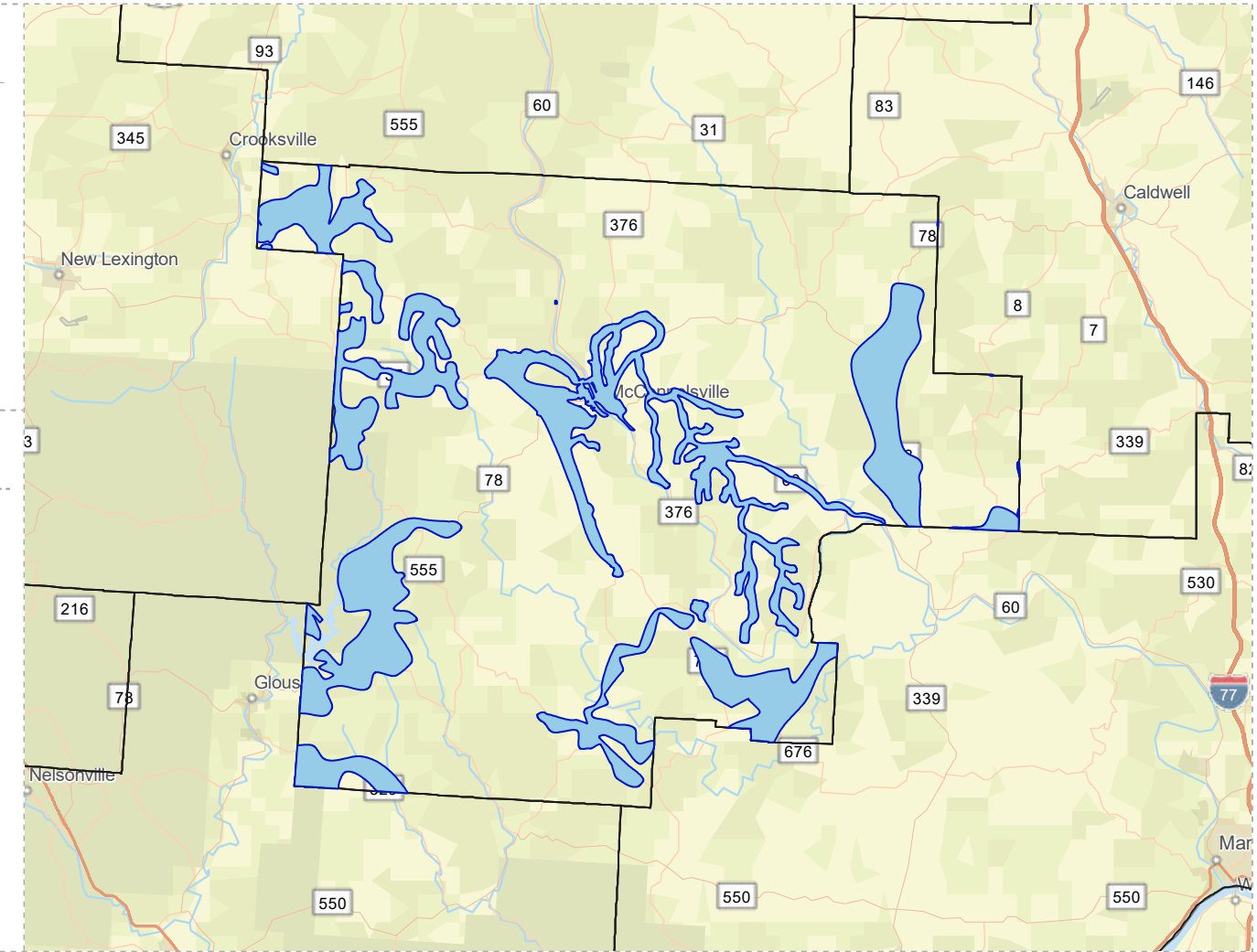
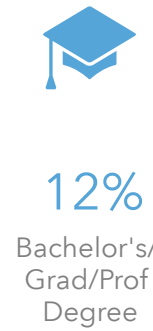
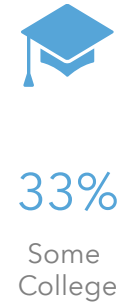
## POPULATION



## INCOME



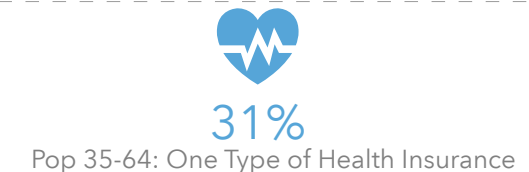
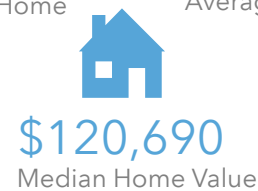
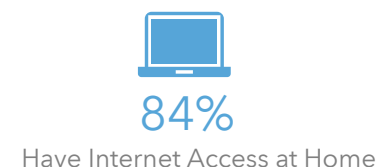
## EDUCATION



## EMPLOYMENT



## MISCELLANEOUS FACTS



# MORGAN COUNTY WITHOUT PUBLIC WATER ACCESS

Morgan\_Co\_Without\_Water

Area: 344.07 square miles



Voinovich School of Leadership and Public Service

Source: Generalized drinking water coverage data overlay with U.S. Census Bureau, Census 2010 Summary File 1. Esri forecasts for 2021 and 2026. All survey-based estimates are subject to sampling error. The calculated population displayed with Census data measures the variability of the estimates.

## POPULATION



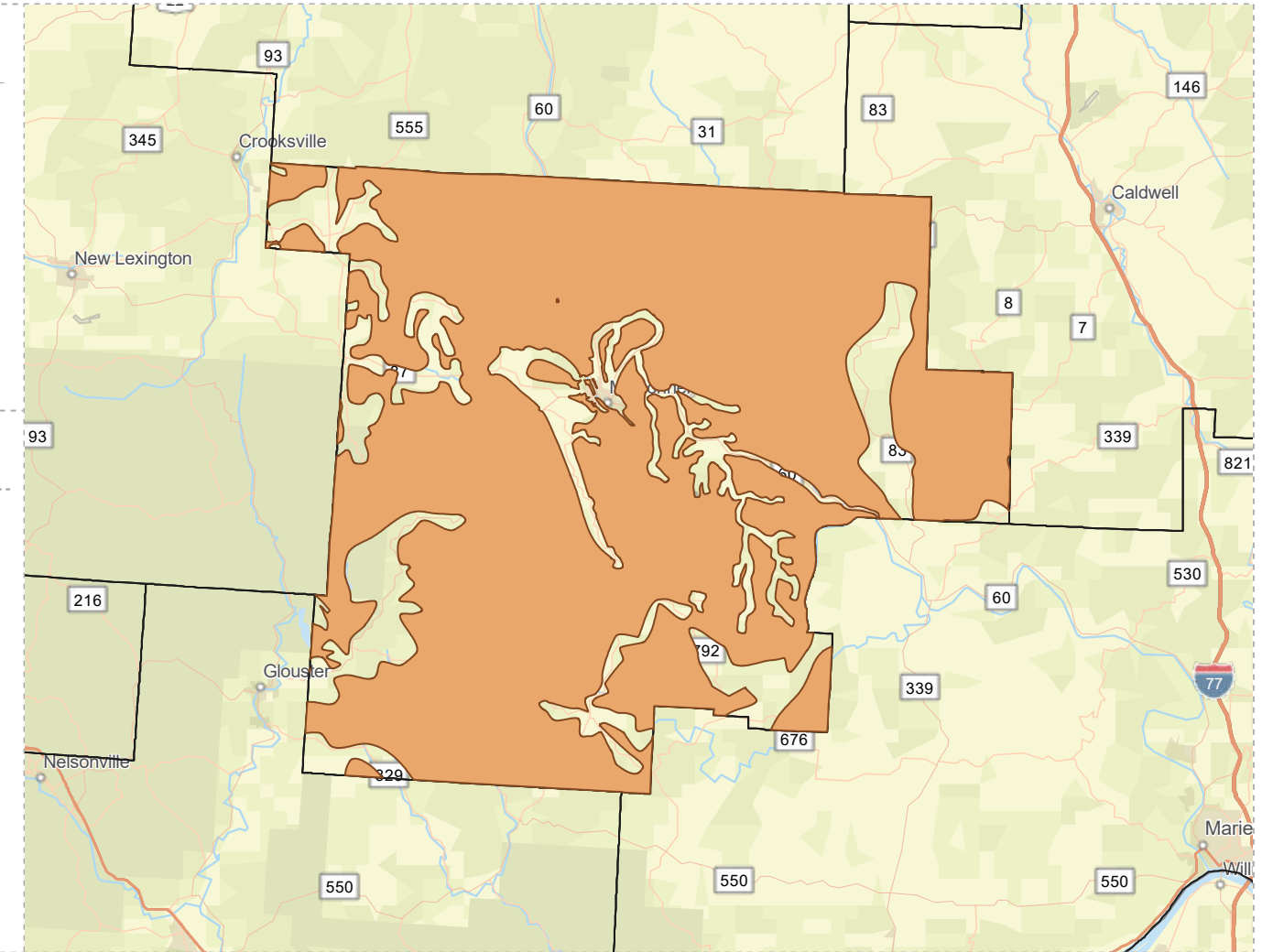
9,275

Total Population



45.5

Median Age



## INCOME



21%

Households Receiving Food Stamps/SNAP



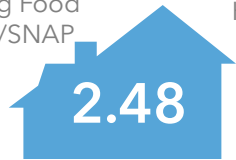
\$41,809

Median Household Income



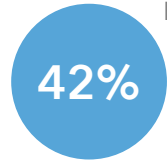
20%

Households Below the Poverty Level



2.48

Average Household Size



42%

Households with 1+ Persons with a Disability

## EMPLOYMENT



51%

White Collar



40%

Blue Collar



Services

9%



3.3%

Unemployment Rate

## EDUCATION



15%

No High School Diploma



45%

High School Graduate



31%

Some College



10%

Bachelor's/ Grad/Prof Degree

## MISCELLANEOUS FACTS



84%

Have Internet Access at Home



\$446

Average Household Cost of Water & Sewer Maintenance (per year)



34%

Pop 35-64: One Type of Health Insurance



\$129,259

Median Home Value



87%

Household Owns or Leases Any Vehicle



26%

Household Spent \$1-\$99 in Average Week at Food Stores