

Monroe County Generalized Water Coverage



Source: Ohio EPA, Community Water Systems coverage area data and/or line area data. Created by Ohio University Voinovich School June, 2022

MONROE COUNTY WITH PUBLIC WATER ACCESS

Monroe_Co_With_Water
 Area: 165.94 square miles

Source: Generalized drinking water coverage data overlay with U.S. Census Bureau, Census 2010 Summary File 1. Esri forecasts for 2021 and 2026. All survey-based estimates are subject to sampling error. The calculated population displayed with Census data measures the variability of the estimates.

POPULATION



8,577

Total Population



47.5

Median Age

INCOME



16%

Households Receiving Food Stamps/SNAP



\$44,978

Median Household Income



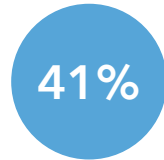
17%

Households Below the Poverty Level



2.30

Average Household Size



41%

Households with 1+ Persons with a Disability

EMPLOYMENT



52%

White Collar



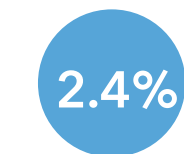
39%

Blue Collar



Services

9%



2.4%
Unemployment Rate

EDUCATION



11%
No High School Diploma



51%

High School Graduate



25%

Some College



13%

Bachelor's/ Grad/Prof Degree

MISCELLANEOUS FACTS



85%

Have Internet Access at Home



\$482

Average Household Cost of Water & Sewer Maintenance (per year)



33%

Pop 35-64: One Type of Health Insurance



\$137,966

Median Home Value



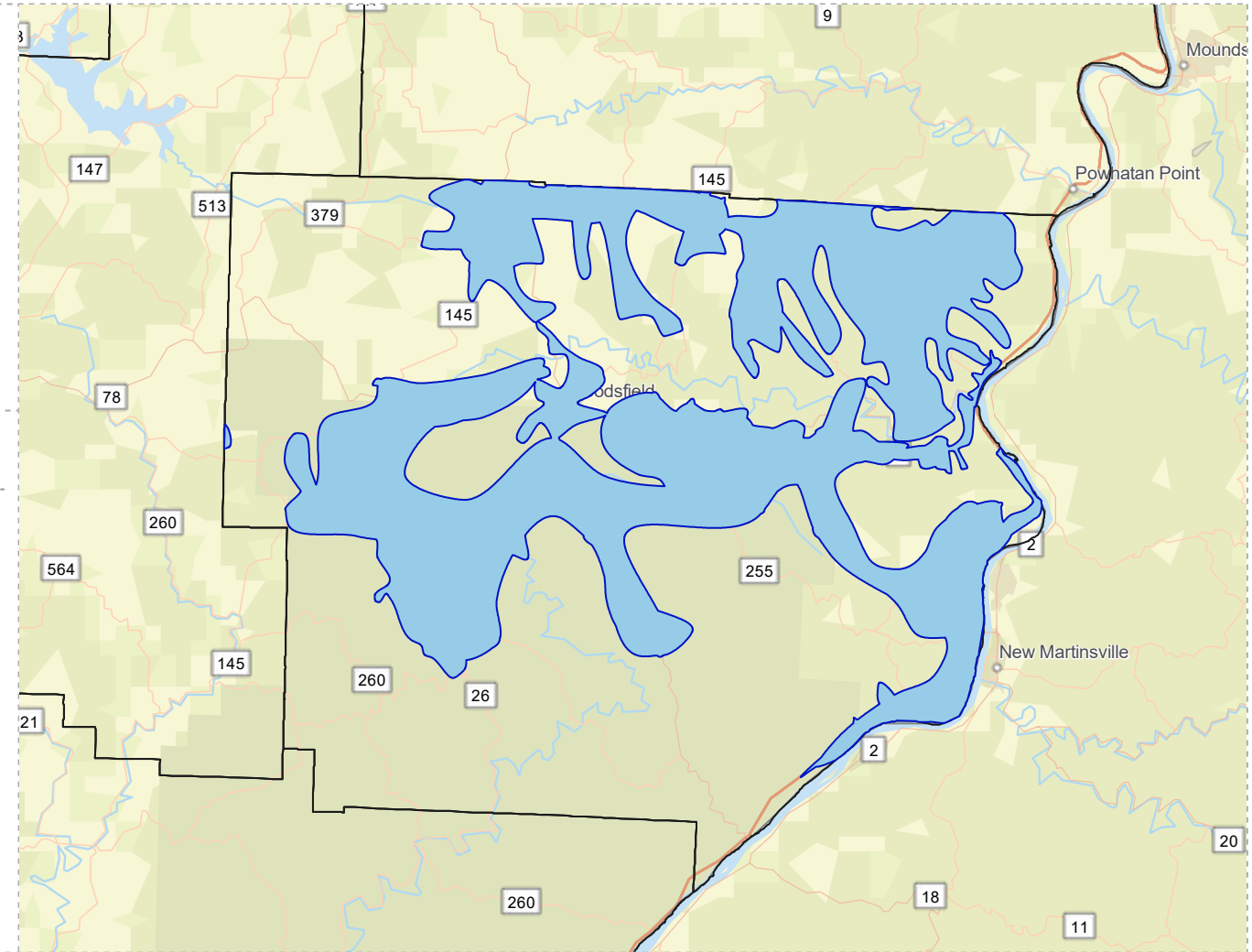
90%

Household Owns or Leases Any Vehicle



26%

Household Spent \$1-\$99 in Average Week at Food Stores



MONROE COUNTY WITHOUT PUBLIC WATER ACCESS

Monroe_Co_Without_Water_MERGE 1

Area: 291.52 square miles



Voinovich School of Leadership and Public Service

Source: Generalized drinking water coverage data overlay with U.S. Census Bureau, Census 2010 Summary File 1. Esri forecasts for 2021 and 2026. All survey-based estimates are subject to sampling error. The calculated population displayed with Census data measures the variability of the estimates.

POPULATION



5,888

Total Population



46.4

Median Age

INCOME



13%

Households Receiving Food Stamps/SNAP



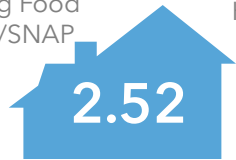
\$46,154

Median Household Income



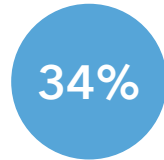
15%

Households Below the Poverty Level



2.52

Average Household Size



34%

Households with 1+ Persons with a Disability

EMPLOYMENT



48%

White Collar



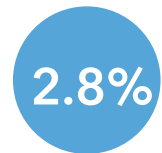
45%

Blue Collar



7%

Services



2.8%

Unemployment Rate

EDUCATION



10%

No High School Diploma



52%

High School Graduate



25%

Some College



13%

Bachelor's/ Grad/Prof Degree

MISCELLANEOUS FACTS



85%

Have Internet Access at Home



\$492

Average Household Cost of Water & Sewer Maintenance (per year)



33%

Pop 35-64: One Type of Health Insurance



\$143,685

Median Home Value



90%

Household Owns or Leases Any Vehicle



25%

Household Spent \$1-\$99 in Average Week at Food Stores

