

# Mahoning County Generalized Water Coverage



Source: Ohio EPA, Community Water Systems coverage area data and/or line area data. Created by Ohio University Voinovich School June, 2022

# MAHONING COUNTY WITH PUBLIC WATER ACCESS

Mahoning\_Co\_With\_Water\_Merge

Area: 204.93 square miles



Voinovich School of Leadership and Public Service

Source: Generalized drinking water coverage data overlay with U.S. Census Bureau, Census 2010 Summary File 1. Esri forecasts for 2021 and 2026. All survey-based estimates are subject to sampling error. The calculated population displayed with Census data measures the variability of the estimates.

## POPULATION



210,240

Total Population



44.8

Median Age

## INCOME



20%

Households Receiving Food Stamps/SNAP



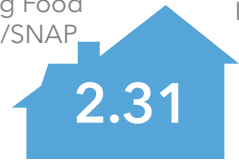
\$45,023

Median Household Income



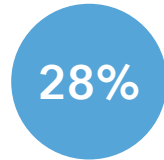
18%

Households Below the Poverty Level



2.31

Average Household Size



28%

Households with 1+ Persons with a Disability

## EMPLOYMENT



63%

White Collar



24%

Blue Collar



12%

Services



5.6%

Unemployment Rate

## EDUCATION



9%

No High School Diploma



37%

High School Graduate



29%

Some College



26%

Bachelor's/ Grad/Prof Degree

## MISCELLANEOUS FACTS



89%

Have Internet Access at Home



\$443

Average Household Cost of Water & Sewer Maintenance (per year)



33%

Pop 35-64: One Type of Health Insurance



\$160,866

Median Home Value



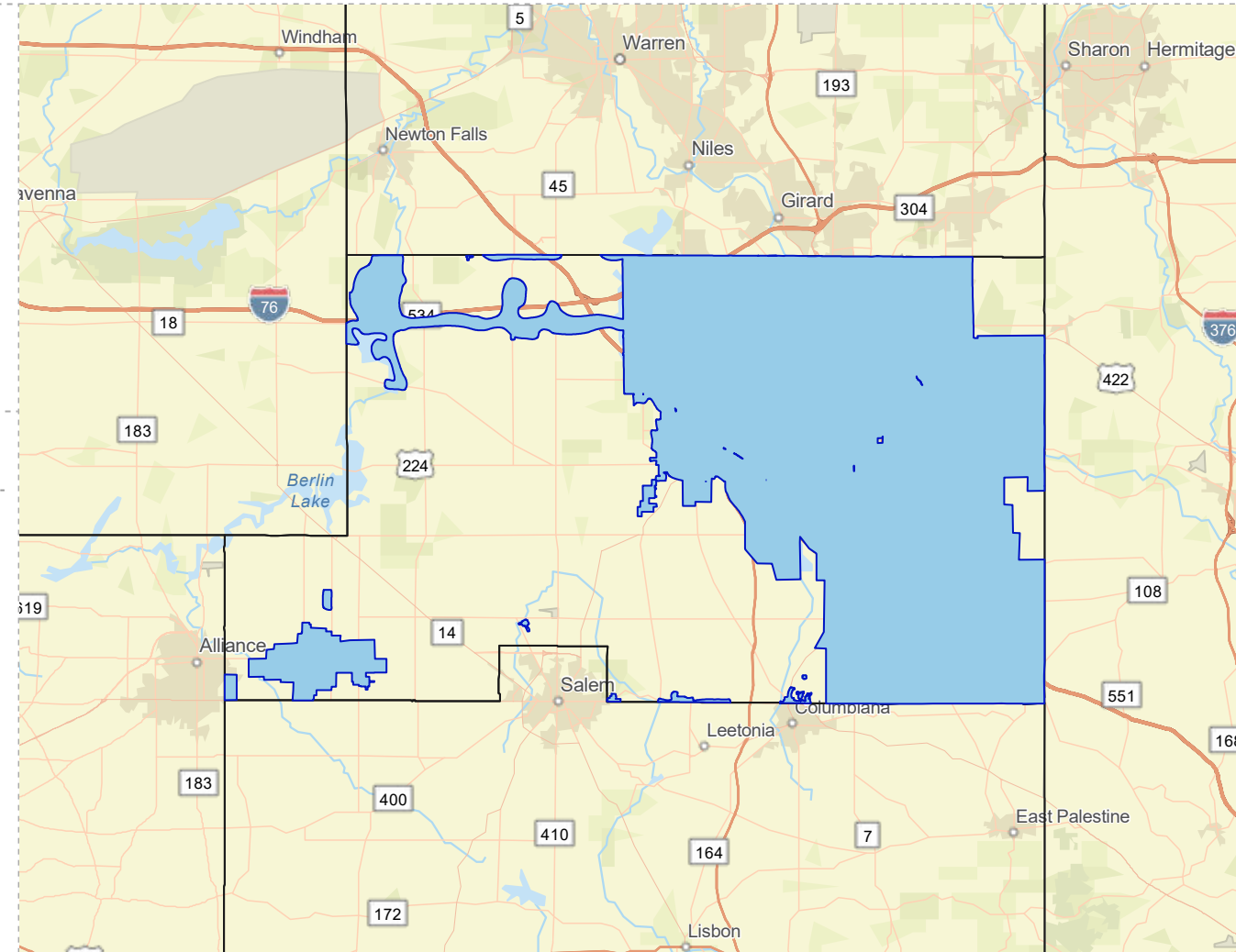
85%

Household Owns or Leases Any Vehicle



21%

Household Spent \$1-\$99 in Average Week at Food Stores



# MAHONING COUNTY WITHOUT PUBLIC WATER ACCESS

Mahoning\_Co\_Without\_Water\_Merge

Area: 220.36 square miles



Voinovich School of Leadership and Public Service

Source: Generalized drinking water coverage data overlay with U.S. Census Bureau, Census 2010 Summary File 1. Esri forecasts for 2021 and 2026. All survey-based estimates are subject to sampling error. The calculated population displayed with Census data measures the variability of the estimates.

## POPULATION



21,958

Total Population



48.7

Median Age

## INCOME

## EDUCATION



8%

Households Receiving Food Stamps/SNAP



\$62,594

Median Household Income



7%

Households Below the Poverty Level



2.60

Average Household Size



26%

Households with 1+ Persons with a Disability



7%

No High School Diploma



41%

High School Graduate



28%

Some College



24%

Bachelor's/ Grad/Prof Degree

## EMPLOYMENT

## MISCELLANEOUS FACTS



61%

White Collar



30%

Blue Collar



Services

8%



Unemployment Rate



91%

Have Internet Access at Home



\$579

Average Household Cost of Water & Sewer Maintenance (per year)



38%

Pop 35-64: One Type of Health Insurance



\$293,730

Median Home Value



93%

Household Owns or Leases Any Vehicle



20%

Household Spent \$1-\$99 in Average Week at Food Stores

