

Lawrence County Water Access



Source: Ohio EPA, Community Water Systems coverage area data and/or line area data. Created by Ohio University Voinovich School June, 2022

LAWRENCE COUNTY WITH PUBLIC WATER ACCESS

Lawrence_Co_With_Water

Area: 404.72 square miles



Voinovich School of Leadership and Public Service

Source: Generalized drinking water coverage data overlay with U.S. Census Bureau, Census 2010 Summary File 1. Esri forecasts for 2021 and 2026. All survey-based estimates are subject to sampling error. The calculated population displayed with Census data measures the variability of the estimates.

POPULATION



58,077

Total Population



42.9

Median Age

INCOME



22%

Households Receiving Food Stamps/SNAP



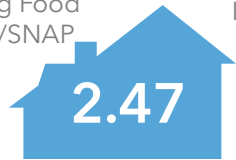
\$44,624

Median Household Income



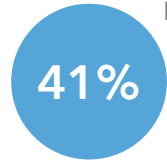
19%

Households Below the Poverty Level



2.47

Average Household Size



41%

Households with 1+ Persons with a Disability

EMPLOYMENT



63%

White Collar



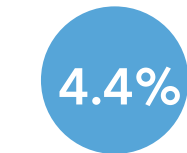
27%

Blue Collar



Services

11%



4.4%

Unemployment Rate

EDUCATION



12%

No High School Diploma



43%

High School Graduate



29%

Some College



16%

Bachelor's/ Grad/Prof Degree

MISCELLANEOUS FACTS



87%

Have Internet Access at Home



\$432

Average Household Cost of Water & Sewer Maintenance (per year)



32%

Pop 35-64: One Type of Health Insurance



\$176,665

Median Home Value



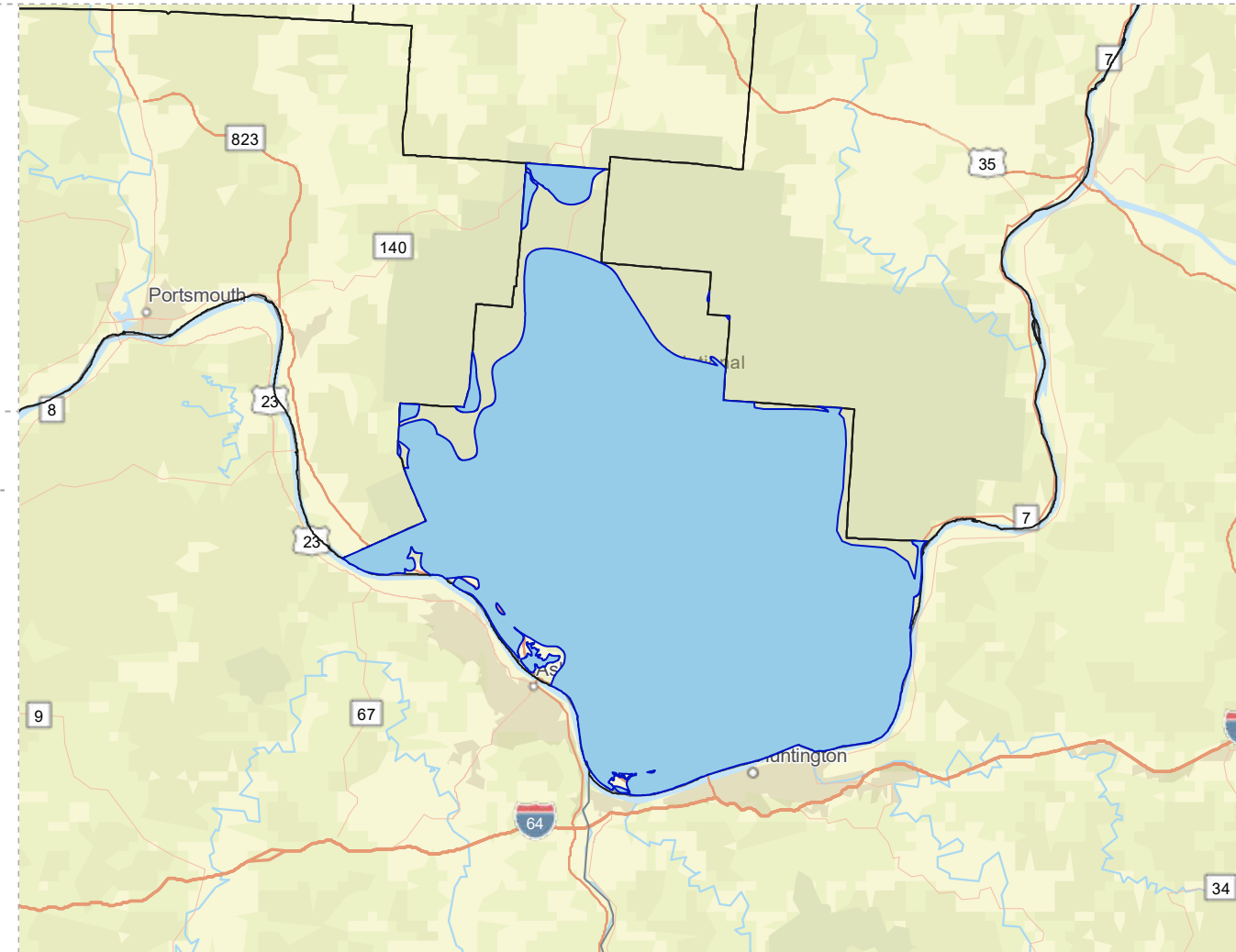
88%

Household Owns or Leases Any Vehicle



23%

Household Spent \$1-\$99 in Average Week at Food Stores



LAWRENCE COUNTY WITHOUT PUBLIC WATER ACCESS

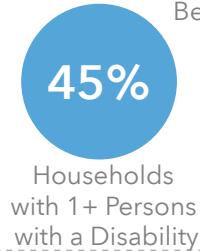
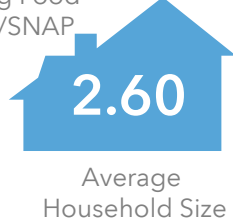
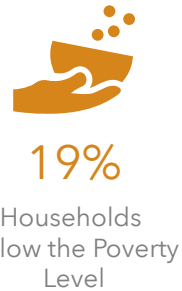
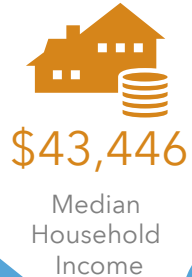
Lawrence_Co_Without_Water
 Area: 52.56 square miles

Source: Generalized drinking water coverage data overlay with U.S. Census Bureau, Census 2010 Summary File 1. Esri forecasts for 2021 and 2026. All survey-based estimates are subject to sampling error. The calculated population displayed with Census data measures the variability of the estimates.

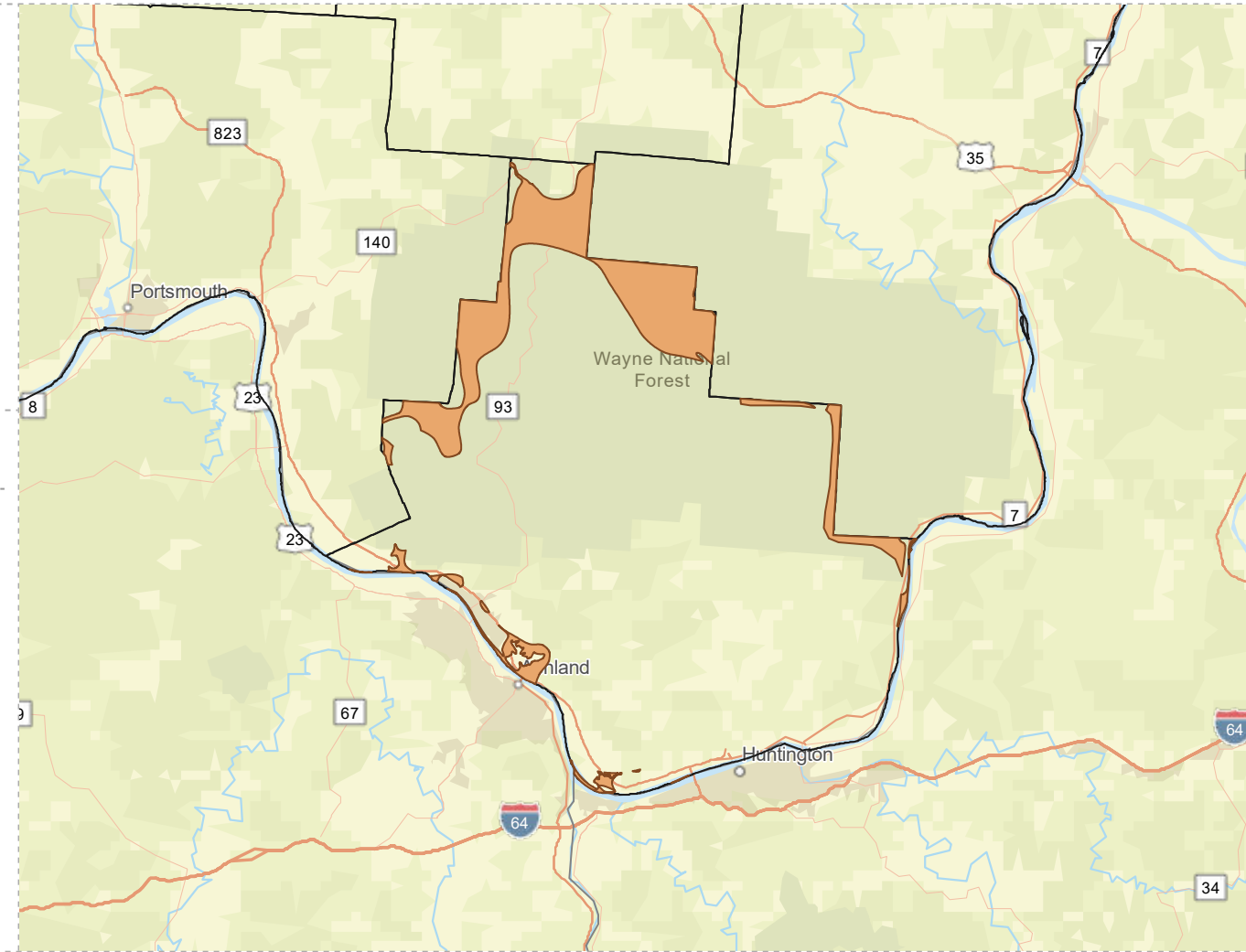
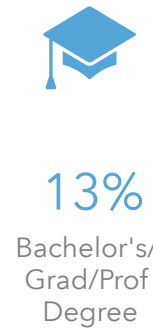
POPULATION



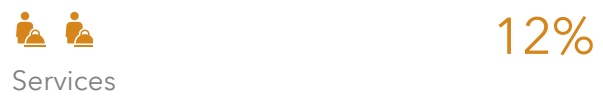
INCOME



EDUCATION



EMPLOYMENT



MISCELLANEOUS FACTS

