

# Jefferson County Generalized Water Coverage



Source: Ohio EPA, Community Water Systems coverage area data and/or line area data. Created by Ohio University Voinovich School June, 2022



# JEFFERSON COUNTY WITH PUBLIC WATER ACCESS

Jefferson\_Co\_With\_Water

Area: 111.79 square miles



Voinovich School of Leadership and Public Service

Source: Generalized drinking water coverage data overlay with U.S. Census Bureau, Census 2010 Summary File 1. Esri forecasts for 2021 and 2026. All survey-based estimates are subject to sampling error. The calculated population displayed with Census data measures the variability of the estimates.

## POPULATION



45,668

Total Population



46.5

Median Age

## INCOME



19%

Households Receiving Food Stamps/SNAP



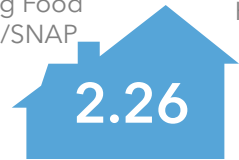
\$45,148

Median Household Income



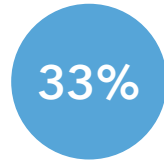
19%

Households Below the Poverty Level



2.26

Average Household Size



33%

Households with 1+ Persons with a Disability

## EMPLOYMENT



60%

White Collar



26%

Blue Collar



Services

13%



5.0%

Unemployment Rate

## EDUCATION



8%

No High School Diploma



43%

High School Graduate



31%

Some College



17%

Bachelor's/ Grad/Prof Degree

## MISCELLANEOUS FACTS



88%

Have Internet Access at Home



\$422

Average Household Cost of Water & Sewer Maintenance (per year)



33%

Pop 35-64: One Type of Health Insurance



\$150,043

Median Home Value



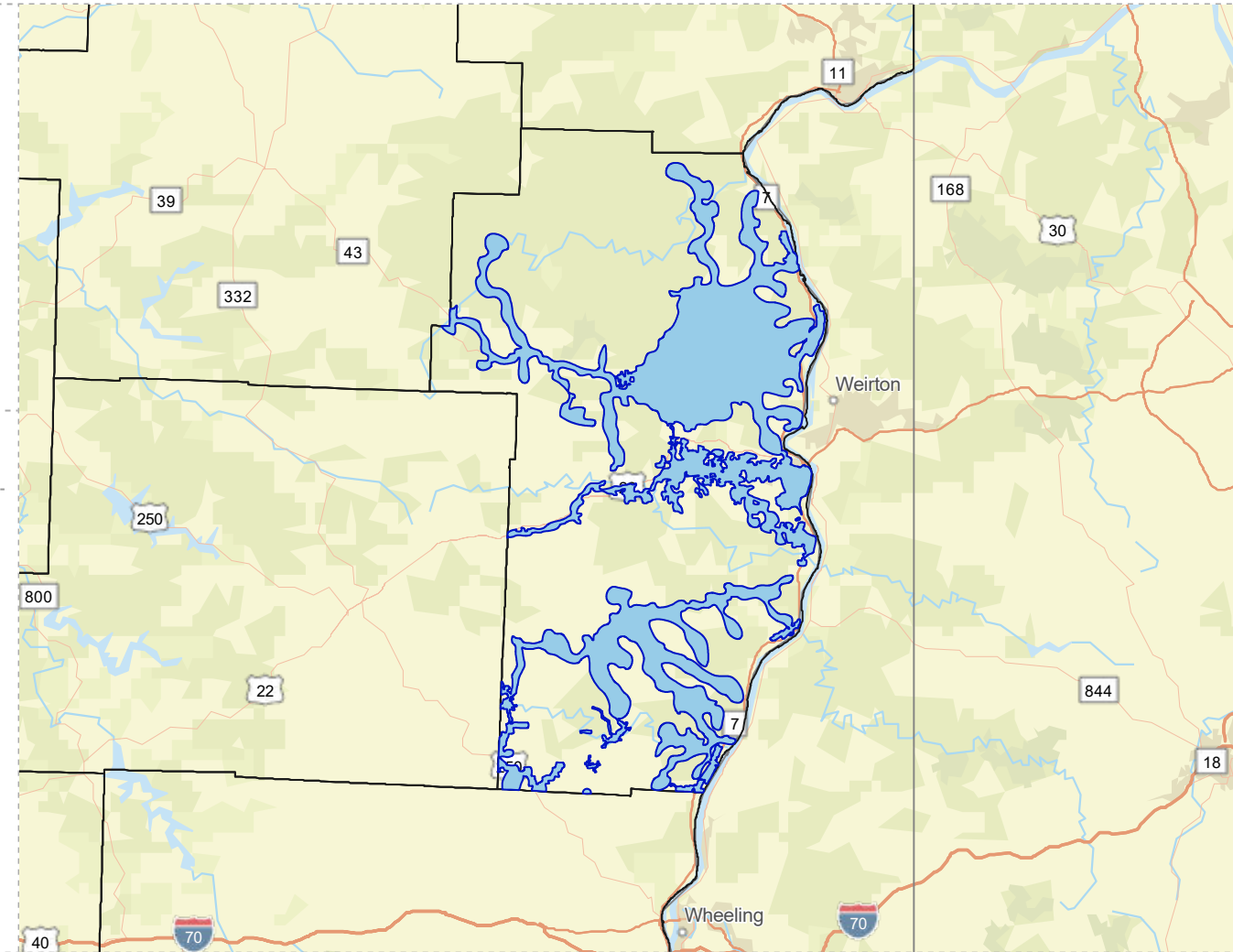
87%

Household Owns or Leases Any Vehicle



21%

Household Spent \$1-\$99 in Average Week at Food Stores



# JEFFERSON COUNTY WITHOUT PUBLIC WATER ACCESS

Jefferson\_Co\_Without\_Water

Area: 299.16 square miles



Voinovich School of Leadership and Public Service

Source: Generalized drinking water coverage data overlay with U.S. Census Bureau, Census 2010 Summary File 1. Esri forecasts for 2021 and 2026. All survey-based estimates are subject to sampling error. The calculated population displayed with Census data measures the variability of the estimates.

## POPULATION



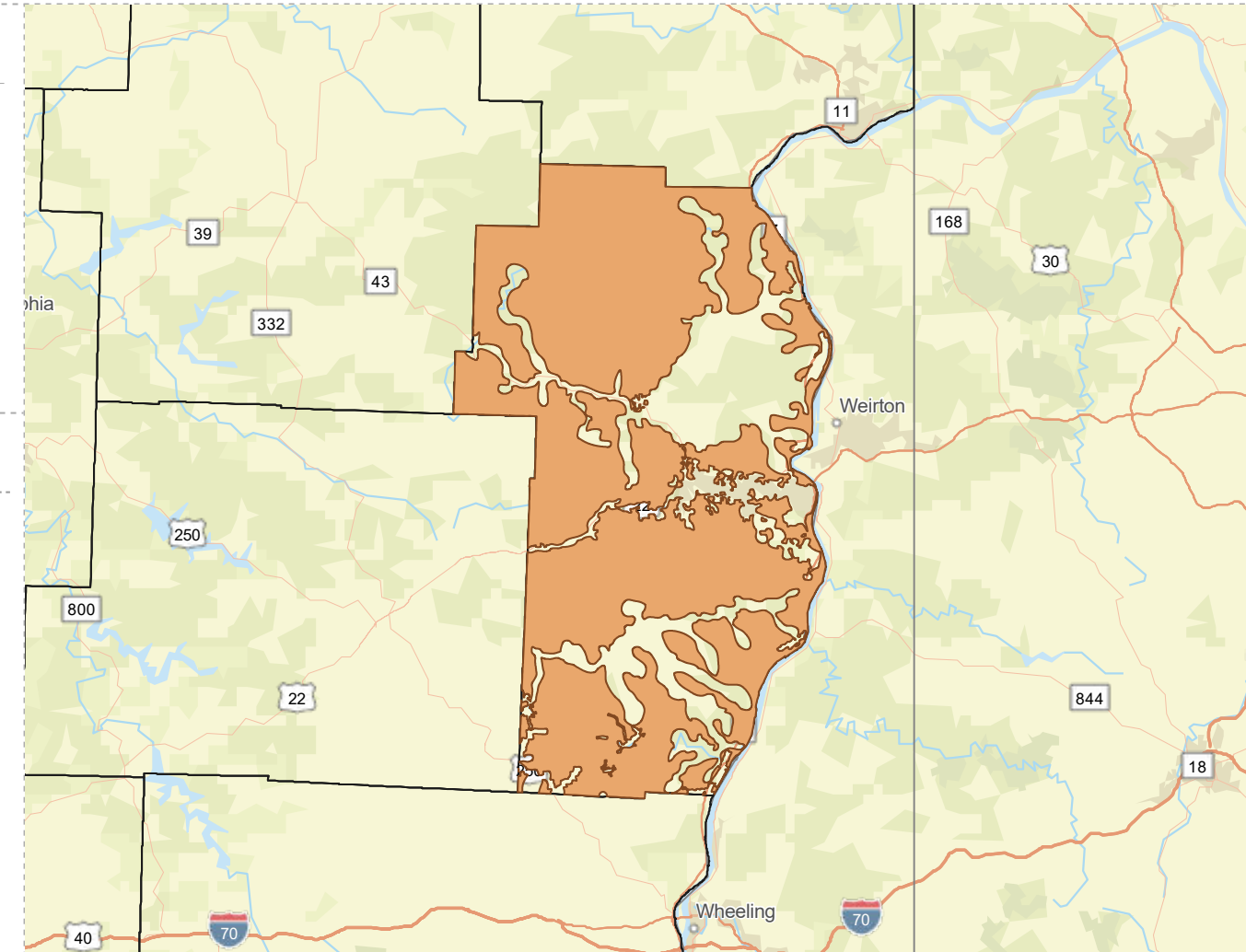
20,820

Total Population



45.6

Median Age



## INCOME



13%

Households Receiving Food Stamps/SNAP



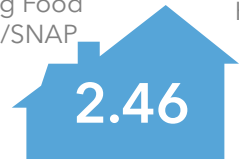
\$53,801

Median Household Income



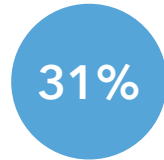
12%

Households Below the Poverty Level



2.46

Average Household Size



31%

Households with 1+ Persons with a Disability

## EMPLOYMENT



59%

White Collar



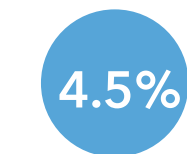
29%

Blue Collar



Services

12%



4.5%

Unemployment Rate

## EDUCATION



9%

No High School Diploma



46%

High School Graduate



30%

Some College



15%

Bachelor's/ Grad/Prof Degree

## MISCELLANEOUS FACTS



87%

Have Internet Access at Home



\$512

Average Household Cost of Water & Sewer Maintenance (per year)



\$176,811

Median Home Value



90%

Household Owns or Leases Any Vehicle



34%

Pop 35-64: One Type of Health Insurance



21%

Household Spent \$1-\$99 in Average Week at Food Stores