

- Holmes Co With Water
- Holmes Co Without Water

Holmes County Generalized Water Coverage



Source: Ohio EPA, Community Water Systems coverage area data and/or line area data. Created by Ohio University Voinovich School June, 2022

HOLMES COUNTY WITH PUBLIC WATER ACCESS

Holmes_Co_With_Water
 Area: 23.24 square miles

Source: Generalized drinking water coverage data overlay with U.S. Census Bureau, Census 2010 Summary File 1. Esri forecasts for 2021 and 2026. All survey-based estimates are subject to sampling error. The calculated population displayed with Census data measures the variability of the estimates.

POPULATION



8,663

Total Population



35.5

Median Age

INCOME



7%

Households Receiving Food Stamps/SNAP



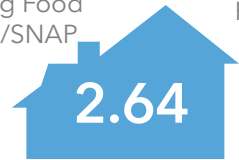
\$57,152

Median Household Income



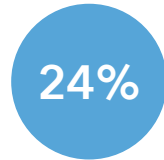
9%

Households Below the Poverty Level



2.64

Average Household Size



24%

Households with 1+ Persons with a Disability

EMPLOYMENT



45%

White Collar



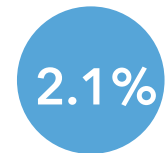
43%

Blue Collar



12%

Services



2.1%

Unemployment Rate

EDUCATION



31%

No High School Diploma



40%

High School Graduate



17%

Some College



12%

Bachelor's/ Grad/Prof Degree

MISCELLANEOUS FACTS



87%

Have Internet Access at Home



\$499

Average Household Cost of Water & Sewer Maintenance (per year)



25%

Pop 35-64: One Type of Health Insurance



\$202,872

Median Home Value



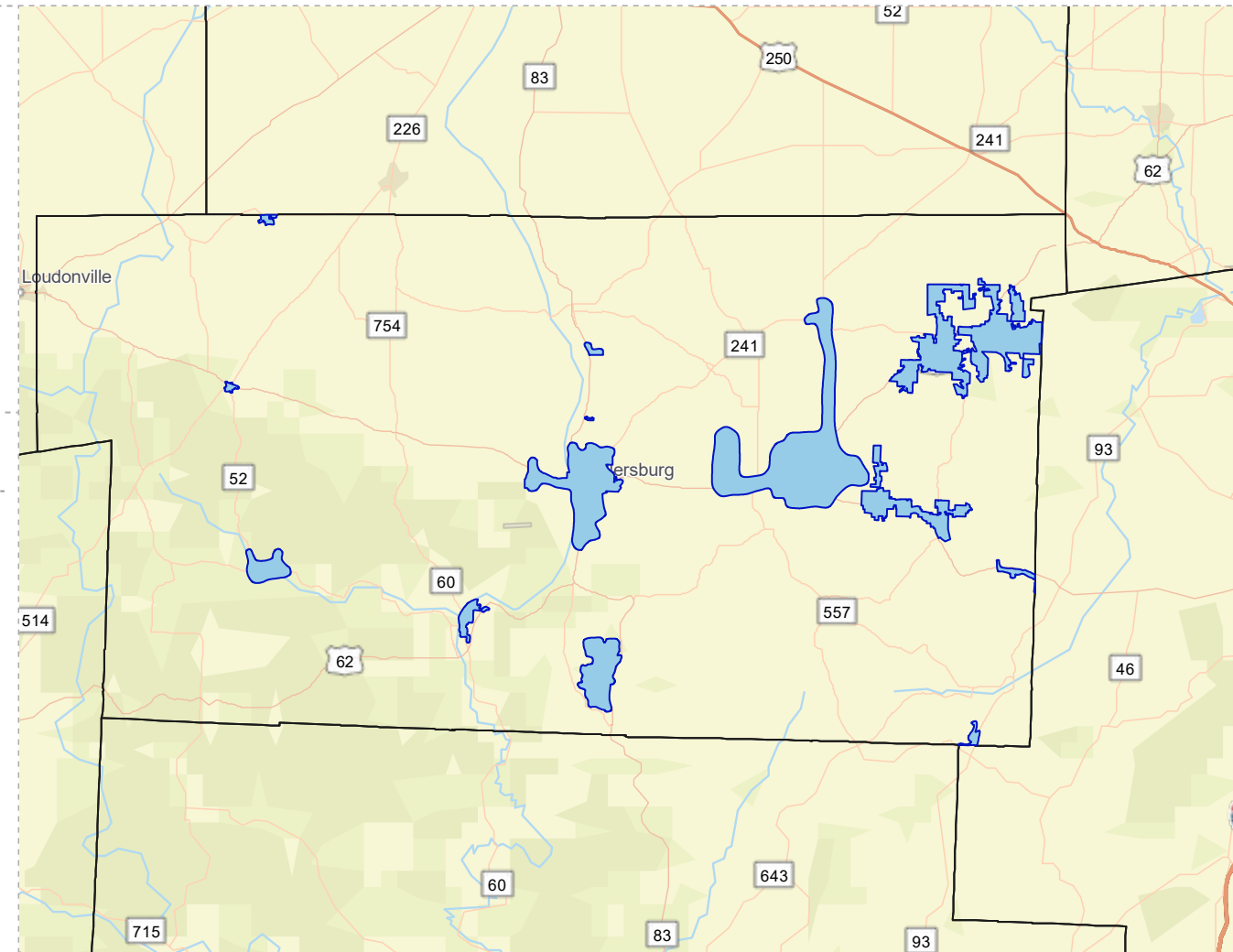
93%

Household Owns or Leases Any Vehicle



22%

Household Spent \$1-\$99 in Average Week at Food Stores



HOLMES COUNTY WITHOUT PUBLIC WATER ACCESS

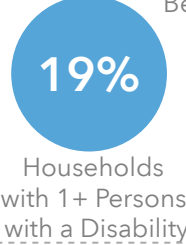
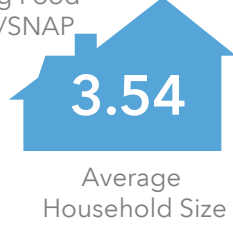
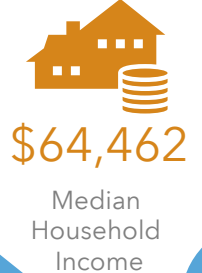
Holmes_Co_Without_Water
 Area: 400.74 square miles

Source: Generalized drinking water coverage data overlay with U.S. Census Bureau, Census 2010 Summary File 1. Esri forecasts for 2021 and 2026. All survey-based estimates are subject to sampling error. The calculated population displayed with Census data measures the variability of the estimates.

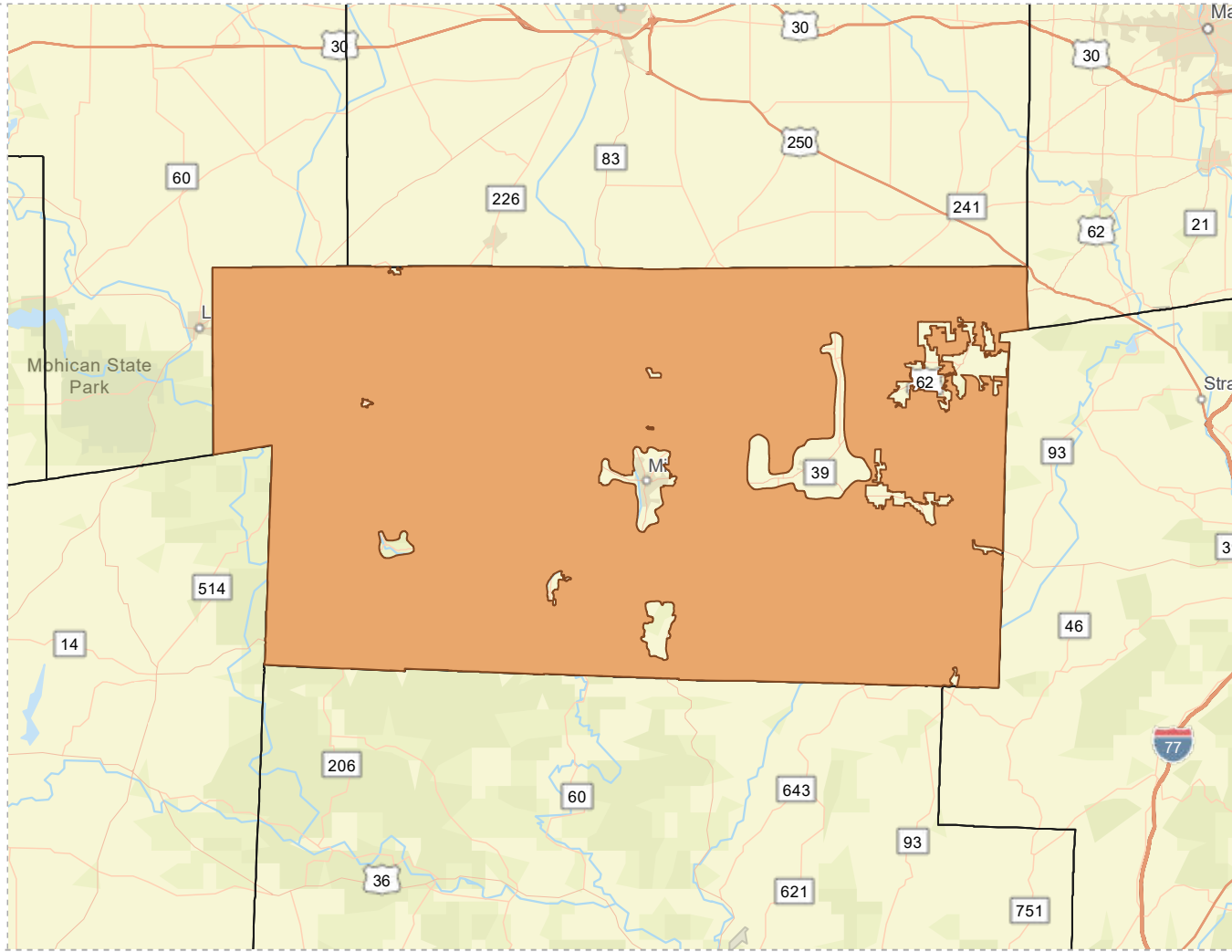
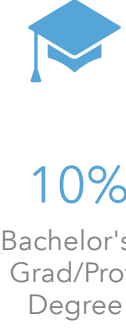
POPULATION



INCOME



EDUCATION



EMPLOYMENT



MISCELLANEOUS FACTS

