

- Hocking Co With Water
- Hocking Co Without Water

# Hocking County Generalized Water Coverage



Source: Ohio EPA, Community Water Systems coverage area data and/or line area data. Created by Ohio University Voinovich School June, 2022

# HOCKING COUNTY WITH PUBLIC WATER ACCESS

Hocking\_Co\_With\_Water

Area: 52.48 square miles



Voinovich School of Leadership and Public Service

Source: Generalized drinking water coverage data overlay with U.S. Census Bureau, Census 2010 Summary File 1. Esri forecasts for 2021 and 2026. All survey-based estimates are subject to sampling error. The calculated population displayed with Census data measures the variability of the estimates.

## POPULATION



11,936

Total Population



40.6

Median Age

## INCOME



23%

Households Receiving Food Stamps/SNAP



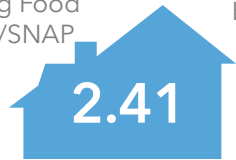
\$44,349

Median Household Income



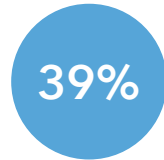
16%

Households Below the Poverty Level



2.41

Average Household Size



39%

Households with 1+ Persons with a Disability

## EMPLOYMENT



59%

White Collar



27%

Blue Collar



Services

14%



5.6%

Unemployment Rate

## EDUCATION



10%

No High School Diploma



43%

High School Graduate



31%

Some College



15%

Bachelor's/ Grad/Prof Degree

## MISCELLANEOUS FACTS



87%

Have Internet Access at Home



\$416

Average Household Cost of Water & Sewer Maintenance (per year)



29%

Pop 35-64: One Type of Health Insurance



\$166,358

Median Home Value



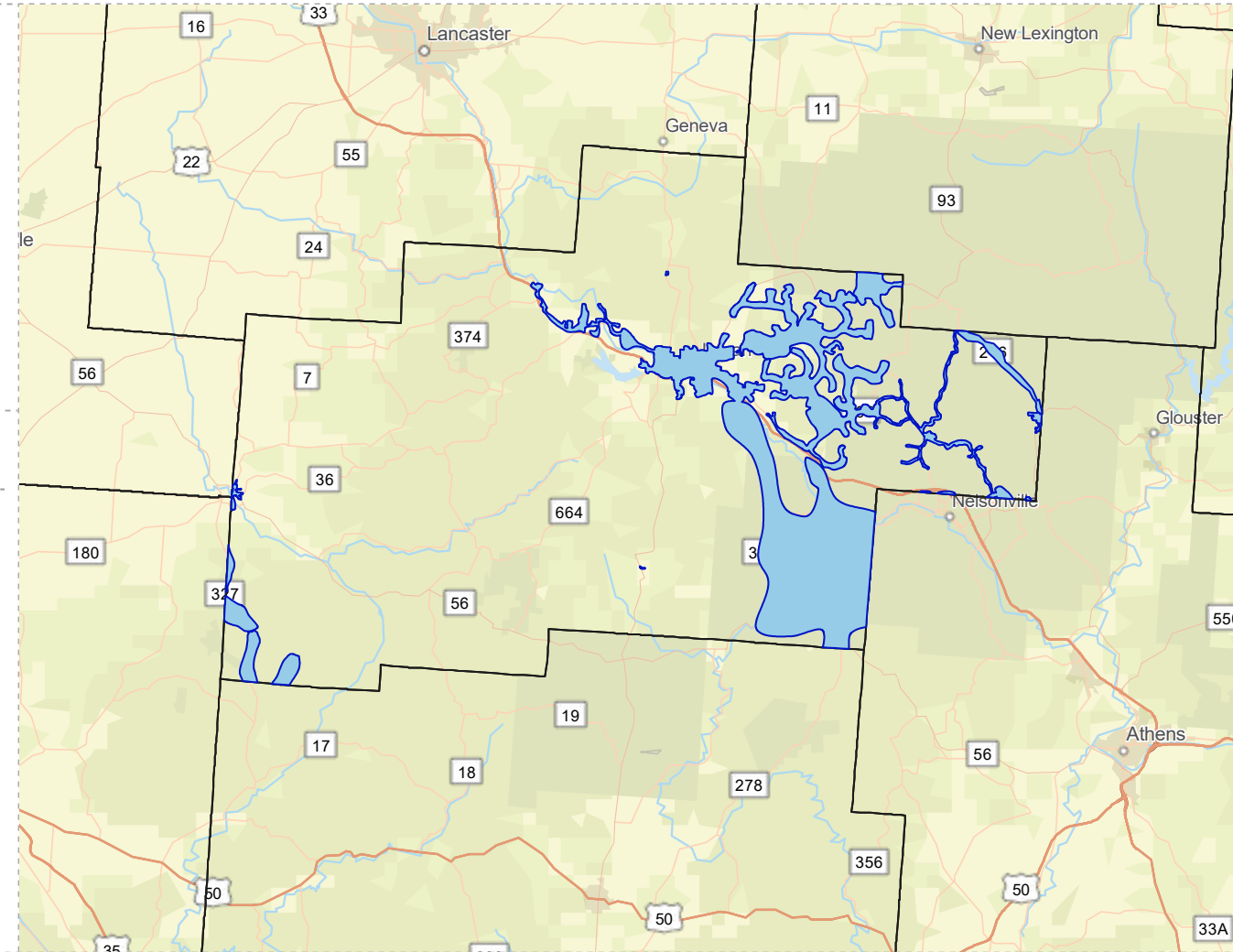
87%

Household Owns or Leases Any Vehicle



22%

Household Spent \$1-\$99 in Average Week at Food Stores



# HOCKING COUNTY WITHOUT PUBLIC WATER ACCESS

Hocking\_Co\_Without\_Water

Area: 371.15 square miles



Voinovich School of Leadership and Public Service

Source: Generalized drinking water coverage data overlay with U.S. Census Bureau, Census 2010 Summary File 1. Esri forecasts for 2021 and 2026. All survey-based estimates are subject to sampling error. The calculated population displayed with Census data measures the variability of the estimates.

## POPULATION



17,105

Total Population



44.6

Median Age

## INCOME



17%

Households Receiving Food Stamps/SNAP



\$55,687

Median Household Income



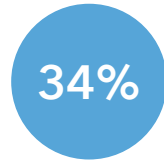
13%

Households Below the Poverty Level



2.60

Average Household Size



34%

Households with 1+ Persons with a Disability

## EMPLOYMENT



57%

White Collar



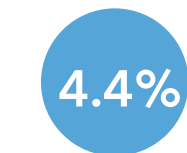
32%

Blue Collar



Services

11%



4.4%

Unemployment Rate

## EDUCATION



10%

No High School Diploma



46%

High School Graduate



28%

Some College



16%

Bachelor's/ Grad/Prof Degree

## MISCELLANEOUS FACTS



89%

Have Internet Access at Home



\$514

Average Household Cost of Water & Sewer Maintenance (per year)



38%

Pop 35-64: One Type of Health Insurance



\$214,504

Median Home Value



92%

Household Owns or Leases Any Vehicle



20%

Household Spent \$1-\$99 in Average Week at Food Stores

