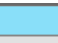



-  Guernsey Co With Water
-  Guernsey Co Without Water

# Guernsey County Generalized Water Coverage



Source: Ohio EPA, Community Water Systems coverage area data and/or line area data. Created by Ohio University Voinovich School June, 2022

# GUERNSEY COUNTY WITH PUBLIC WATER ACCESS

Guernsey\_Co\_With\_Water\_Merge

Area: 135.22 square miles



Voinovich School of Leadership and Public Service

Source: Generalized drinking water coverage data overlay with U.S. Census Bureau, Census 2010 Summary File 1. Esri forecasts for 2021 and 2026. All survey-based estimates are subject to sampling error. The calculated population displayed with Census data measures the variability of the estimates.

## POPULATION



25,447

Total Population



Median Age

## INCOME



20%

Households Receiving Food Stamps/SNAP



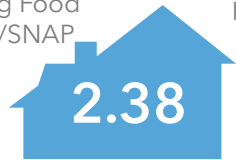
\$45,200

Median Household Income

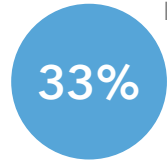


21%

Households Below the Poverty Level



Average Household Size



Households with 1+ Persons with a Disability

## EMPLOYMENT



57%

White Collar



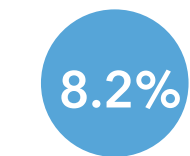
32%

Blue Collar



Services

11%



Unemployment Rate

## EDUCATION



No High School Diploma



42%

High School Graduate



30%

Some College



16%

Bachelor's/ Grad/Prof Degree

## MISCELLANEOUS FACTS



87%

Have Internet Access at Home



\$439

Average Household Cost of Water & Sewer Maintenance (per year)



31%

Pop 35-64: One Type of Health Insurance



\$153,684

Median Home Value



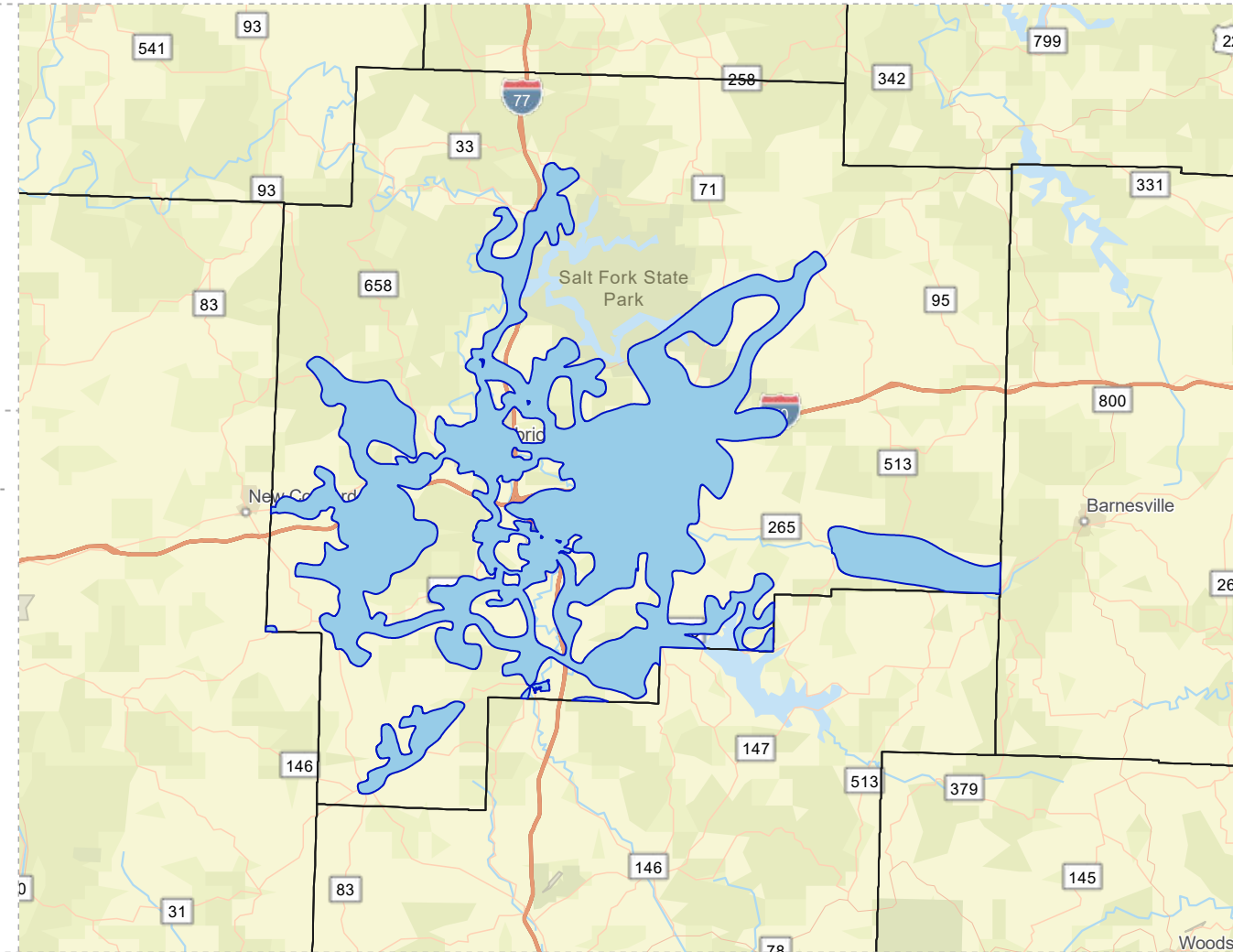
87%

Household Owns or Leases Any Vehicle



23%

Household Spent \$1-\$99 in Average Week at Food Stores



# GUERNSEY COUNTY WITHOUT PUBLIC WATER ACCESS

Guernsey\_Co\_Without\_Water

Area: 393.08 square miles

Source: Generalized drinking water coverage data overlay with U.S. Census Bureau, Census 2010 Summary File 1. Esri forecasts for 2021 and 2026. All survey-based estimates are subject to sampling error. The calculated population displayed with Census data measures the variability of the estimates.

## POPULATION



13,850

Total Population



44.9

Median Age

## INCOME



12%

Households Receiving Food Stamps/SNAP



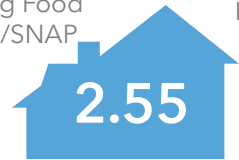
\$52,982

Median Household Income



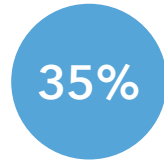
14%

Households Below the Poverty Level



2.55

Average Household Size



35%

Households with 1+ Persons with a Disability

## EMPLOYMENT



54%

White Collar



36%

Blue Collar



Services

10%



5.6%

Unemployment Rate

## EDUCATION

16%

No High School Diploma



43%

High School Graduate



26%

Some College



16%

Bachelor's/ Grad/Prof Degree

## MISCELLANEOUS FACTS



87%

Have Internet Access at Home



\$502

Average Household Cost of Water & Sewer Maintenance (per year)



31%

Pop 35-64: One Type of Health Insurance



\$192,158

Median Home Value



91%

Household Owns or Leases Any Vehicle



24%

Household Spent \$1-\$99 in Average Week at Food Stores

