

Gallia County Water Access



Source: Ohio EPA, Community Water Systems coverage area data and/or line area data. Created by Ohio University Voinovich School June, 2022

GALLIA COUNTY WITH PUBLIC WATER ACCESS

Gallia_Co_With_Water_Merge

Area: 316.13 square miles

Source: Generalized drinking water coverage data overlay with U.S. Census Bureau, Census 2010 Summary File 1. Esri forecasts for 2021 and 2026. All survey-based estimates are subject to sampling error. The calculated population displayed with Census data measures the variability of the estimates.

POPULATION



25,734

Total Population



41.7

Median Age

INCOME



20%

Households Receiving Food Stamps/SNAP



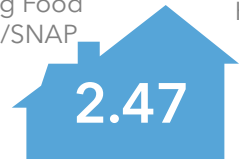
\$48,802

Median Household Income



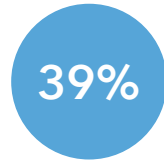
19%

Households Below the Poverty Level



2.47

Average Household Size



39%

Households with 1+ Persons with a Disability

EMPLOYMENT



59%

White Collar



29%

Blue Collar



Services

12%



3.6%

Unemployment Rate

EDUCATION



15%

No High School Diploma



40%

High School Graduate



28%

Some College



17%

Bachelor's/ Grad/Prof Degree

MISCELLANEOUS FACTS



86%

Have Internet Access at Home



\$476

Average Household Cost of Water & Sewer Maintenance (per year)



32%

Pop 35-64: One Type of Health Insurance



\$160,016

Median Home Value



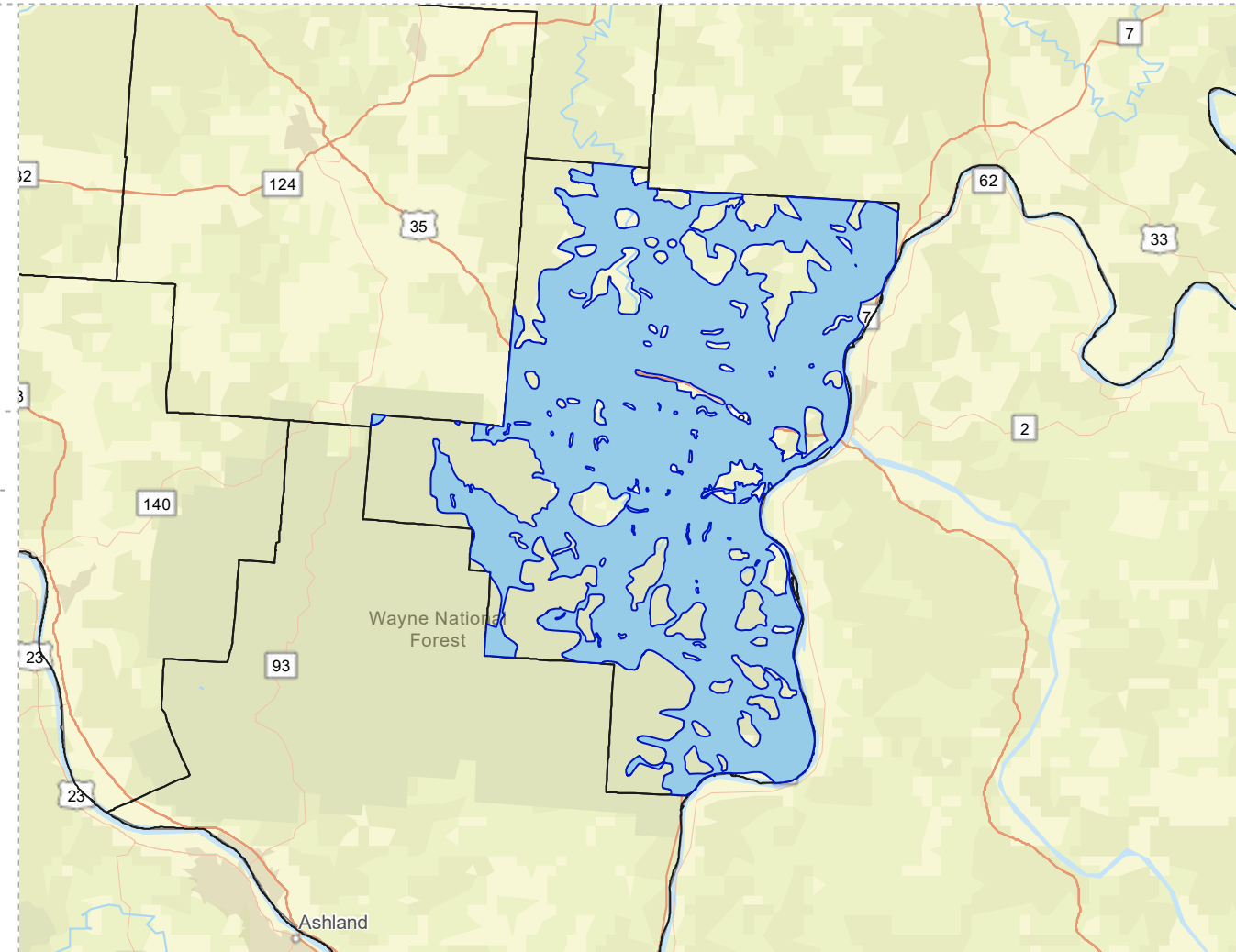
89%

Household Owns or Leases Any Vehicle



24%

Household Spent \$1-\$99 in Average Week at Food Stores



GALLIA COUNTY WITHOUT PUBLIC WATER ACCESS

Gallia_Co_Without_Water_Merge

Area: 155.07 square miles



Voinovich School of Leadership and Public Service

Source: Generalized drinking water coverage data overlay with U.S. Census Bureau, Census 2010 Summary File 1. Esri forecasts for 2021 and 2026. All survey-based estimates are subject to sampling error. The calculated population displayed with Census data measures the variability of the estimates.

POPULATION



4,855

Total Population



41.0

Median Age

INCOME



16%

Households Receiving Food Stamps/SNAP



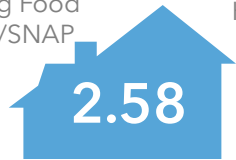
\$50,582

Median Household Income



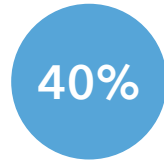
18%

Households Below the Poverty Level



2.58

Average Household Size



40%

Households with 1+ Persons with a Disability

EMPLOYMENT



53%

White Collar



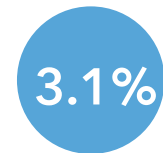
36%

Blue Collar



11%

Services



3.1%

Unemployment Rate

EDUCATION



16%

No High School Diploma



42%

High School Graduate



25%

Some College



17%

Bachelor's/ Grad/Prof Degree

MISCELLANEOUS FACTS



87%

Have Internet Access at Home



\$487

Average Household Cost of Water & Sewer Maintenance (per year)



\$161,358

Median Home Value



91%

Household Owns or Leases Any Vehicle



31%

Pop 35-64: One Type of Health Insurance



23%

Household Spent \$1-\$99 in Average Week at Food Stores

