

Coshocton County Generalized Water Coverage



Source: Ohio EPA, Community Water Systems coverage area data and/or line area data. Created by Ohio University Voinovich School June, 2022

COSHOCTON COUNTY WITH PUBLIC WATER ACCESS

Coshocton_Co_With_Water

Area: 18.03 square miles



Voinovich School of Leadership and Public Service

Source: Generalized drinking water coverage data overlay with U.S. Census Bureau, Census 2010 Summary File 1. Esri forecasts for 2021 and 2026. All survey-based estimates are subject to sampling error. The calculated population displayed with Census data measures the variability of the estimates.

POPULATION



15,703

Total Population



43.0

Median Age

INCOME



23%

Households Receiving Food Stamps/SNAP



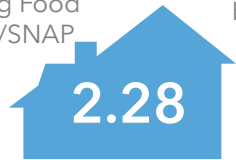
\$40,143

Median Household Income



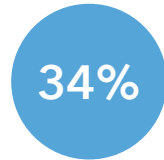
17%

Households Below the Poverty Level



2.28

Average Household Size



34%

Households with 1+ Persons with a Disability

EMPLOYMENT



50%

White Collar



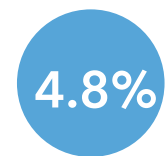
36%

Blue Collar



14%

Services



4.8%

Unemployment Rate

EDUCATION



11%

No High School Diploma



49%

High School Graduate



25%

Some College



14%

Bachelor's/ Grad/Prof Degree

MISCELLANEOUS FACTS



89%

Have Internet Access at Home



\$369

Average Household Cost of Water & Sewer Maintenance (per year)



30%

Pop 35-64: One Type of Health Insurance



\$98,150

Median Home Value



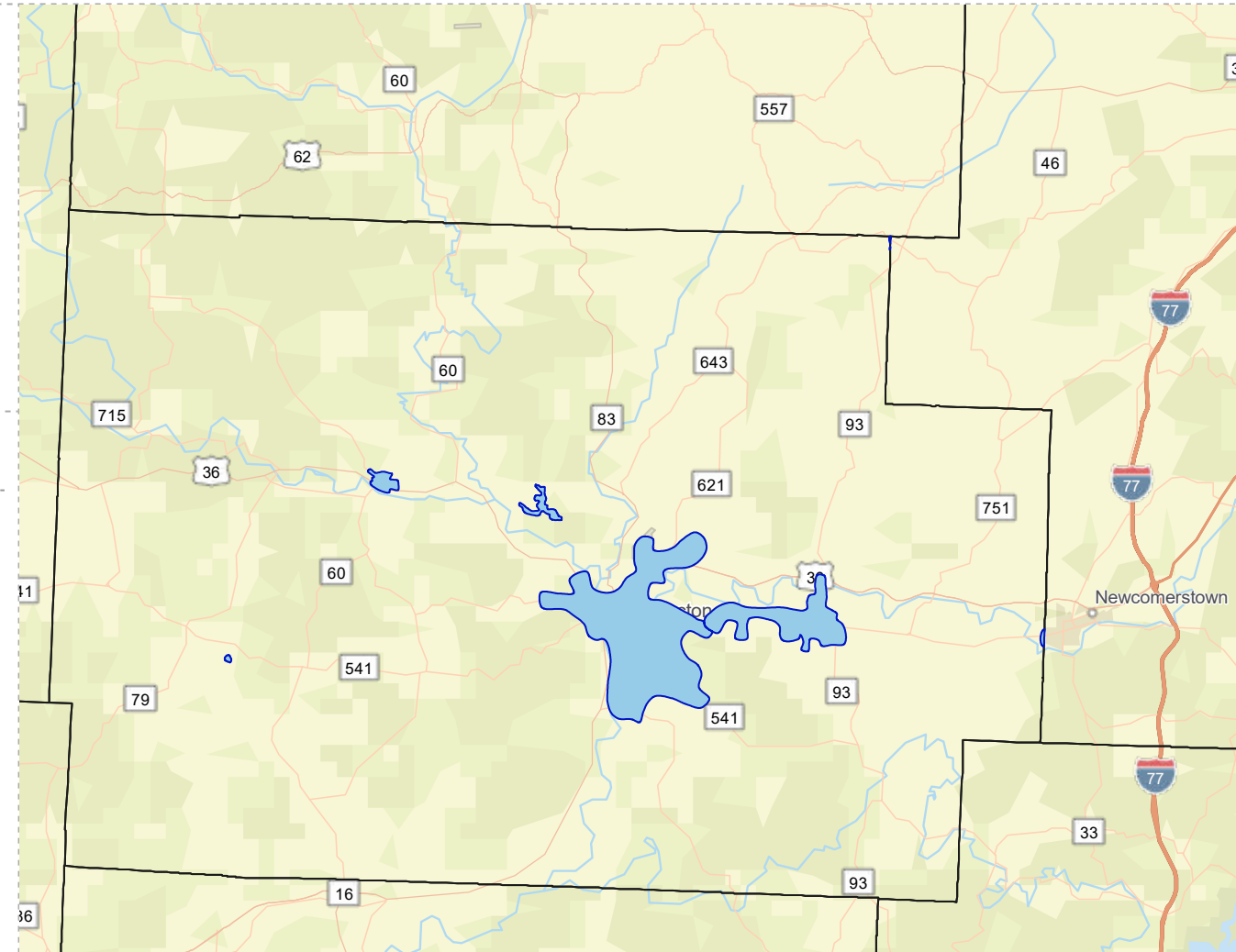
86%

Household Owns or Leases Any Vehicle



22%

Household Spent \$1-\$99 in Average Week at Food Stores



COSHOCTON COUNTY WITHOUT PUBLIC WATER ACCESS

Coshocton_Co_Without_Water

Area: 549.46 square miles



Voinovich School of Leadership and Public Service

Source: Generalized drinking water coverage data overlay with U.S. Census Bureau, Census 2010 Summary File 1. Esri forecasts for 2021 and 2026. All survey-based estimates are subject to sampling error. The calculated population displayed with Census data measures the variability of the estimates.

POPULATION



21,326

Total Population



Median Age

INCOME



11%

Households Receiving Food Stamps/SNAP



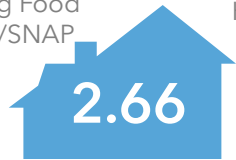
\$54,930

Median Household Income



11%

Households Below the Poverty Level



Average Household Size



Households with 1+ Persons with a Disability

EDUCATION



No High School Diploma



45%

High School Graduate



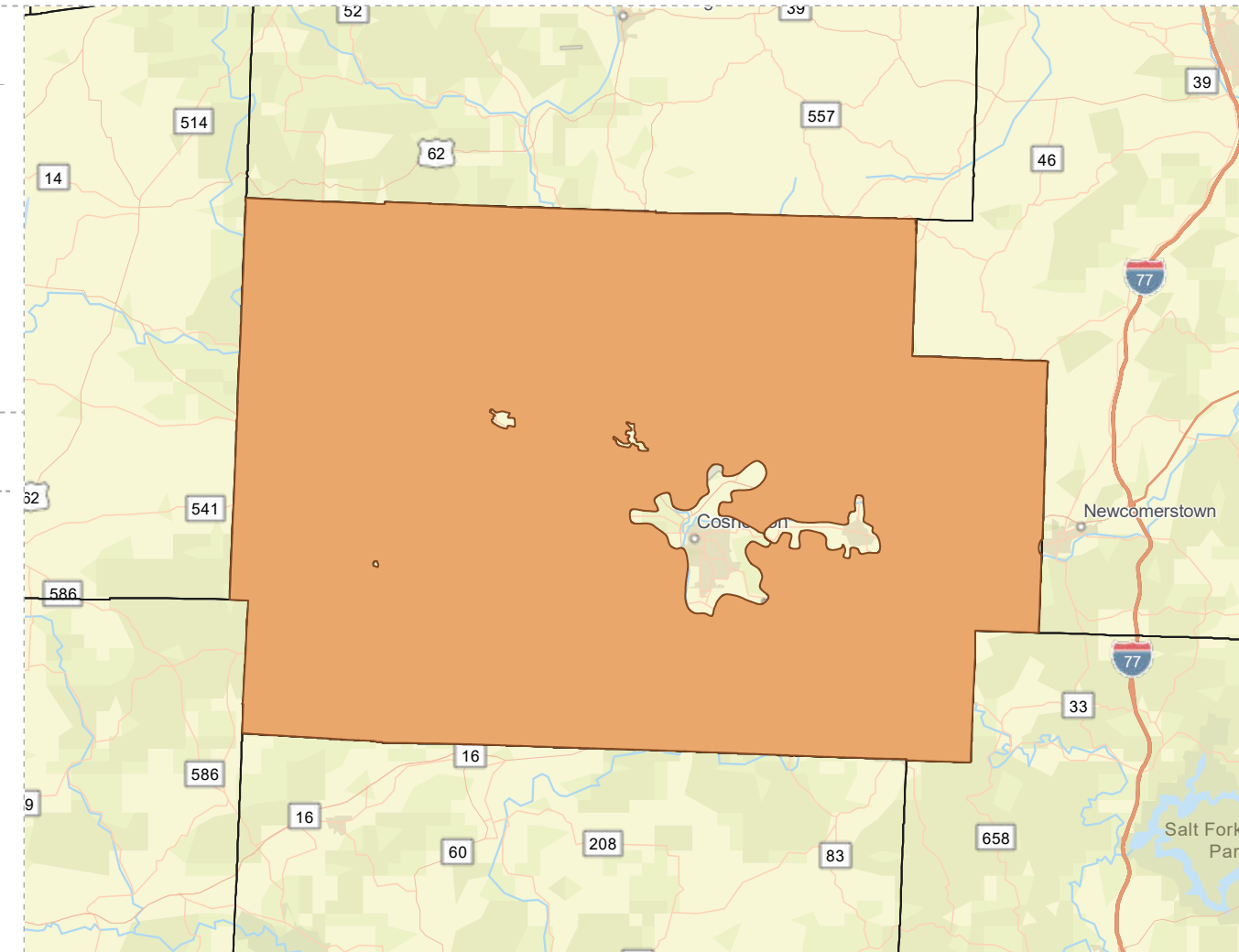
25%

Some College



14%

Bachelor's/ Grad/Prof Degree



EMPLOYMENT



46%

White Collar



43%

Blue Collar



Services

10%



Unemployment Rate

MISCELLANEOUS FACTS



89%

Have Internet Access at Home



\$494

Average Household Cost of Water & Sewer Maintenance (per year)



31%

Pop 35-64: One Type of Health Insurance



\$205,076

Median Home Value



92%

Household Owns or Leases Any Vehicle



21%

Household Spent \$1-\$99 in Average Week at Food Stores