

Columbiana County Generalized Water Coverage



Source: Ohio EPA, Community Water Systems coverage area data and/or line area data. Created by Ohio University Voinovich School June, 2022

COLUMBIANA COUNTY WITH PUBLIC WATER ACCESS

Columbiana_With_Water_Merge

Area: 66.16 square miles



Voinovich School of Leadership and Public Service

Source: Generalized drinking water coverage data overlay with U.S. Census Bureau, Census 2010 Summary File 1. Esri forecasts for 2021 and 2026. All survey-based estimates are subject to sampling error. The calculated population displayed with Census data measures the variability of the estimates.

POPULATION



54,657

Total Population



Median Age

INCOME



18%

Households Receiving Food Stamps/SNAP



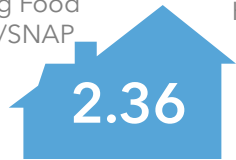
\$49,781

Median Household Income

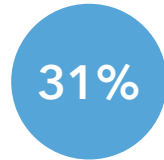


17%

Households Below the Poverty Level



Average Household Size



Households with 1+ Persons with a Disability

EDUCATION



No High School Diploma



43%

High School Graduate



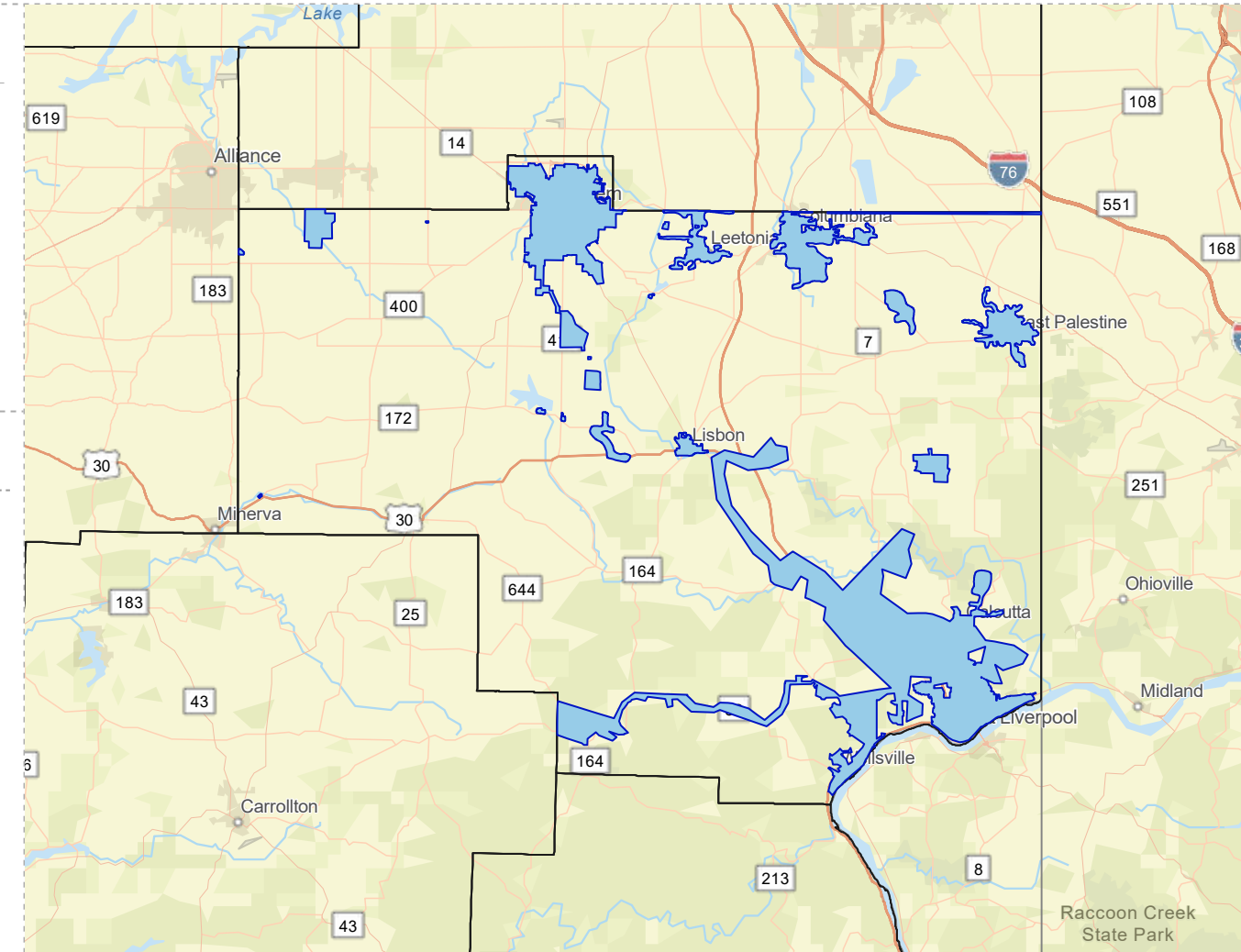
29%

Some College



16%

Bachelor's/ Grad/Prof Degree



EMPLOYMENT



54%

White Collar



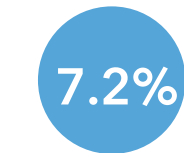
33%

Blue Collar



Services

13%



Unemployment Rate

MISCELLANEOUS FACTS



88%

Have Internet Access at Home



\$416

Average Household Cost of Water & Sewer Maintenance (per year)



32%

Pop 35-64: One Type of Health Insurance



\$133,984

Median Home Value



88%

Household Owns or Leases Any Vehicle



22%

Household Spent \$1-\$99 in Average Week at Food Stores

COLUMBIANA COUNTY WITHOUT PUBLIC WATER ACCESS

Columbiana_Without_Water

Area: 468.53 square miles



Voinovich School of Leadership and Public Service

Source: Generalized drinking water coverage data overlay with U.S. Census Bureau, Census 2010 Summary File 1. Esri forecasts for 2021 and 2026. All survey-based estimates are subject to sampling error. The calculated population displayed with Census data measures the variability of the estimates.

POPULATION



49,015

Total Population



45.5

Median Age

INCOME



10%

Households Receiving Food Stamps/SNAP



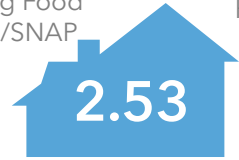
\$58,421

Median Household Income



10%

Households Below the Poverty Level



2.53

Average Household Size



28%

Households with 1+ Persons with a Disability

EMPLOYMENT



53%

White Collar



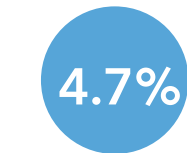
38%

Blue Collar



Services

9%



4.7%

Unemployment Rate

EDUCATION



10%

No High School Diploma



46%

High School Graduate



29%

Some College



16%

Bachelor's/ Grad/Prof Degree

MISCELLANEOUS FACTS



88%

Have Internet Access at Home



\$498

Average Household Cost of Water & Sewer Maintenance (per year)



36%

Pop 35-64: One Type of Health Insurance



\$184,912

Median Home Value



91%

Household Owns or Leases Any Vehicle



21%

Household Spent \$1-\$99 in Average Week at Food Stores

