

Belmont County Generalized Water Coverage



Source: Ohio EPA, Community Water Systems coverage area data and/or line area data. Created by Ohio University Voinovich School June, 2022

BELMONT COUNTY WITH PUBLIC WATER ACCESS

Belmont_Co_With_Water_Merge

Area: 271.98 square miles



Voinovich School of Leadership and Public Service

Source: Generalized drinking water coverage data overlay with U.S. Census Bureau, Census 2010 Summary File 1. Esri forecasts for 2021 and 2026. All survey-based estimates are subject to sampling error. The calculated population displayed with Census data measures the variability of the estimates.

POPULATION



54,692

Total Population



45.4

Median Age

INCOME



12%

Households Receiving Food Stamps/SNAP



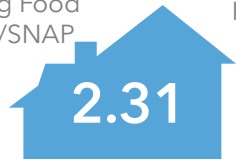
\$50,326

Median Household Income



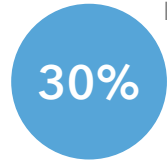
12%

Households Below the Poverty Level



2.31

Average Household Size



30%

Households with 1+ Persons with a Disability

EMPLOYMENT



56%

White Collar



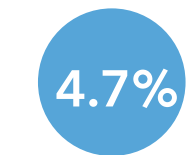
30%

Blue Collar



Services

14%



4.7%

Unemployment Rate

EDUCATION



9%

No High School Diploma



41%

High School Graduate



31%

Some College



19%

Bachelor's/ Grad/Prof Degree

MISCELLANEOUS FACTS



89%

Have Internet Access at Home



\$507

Average Household Cost of Water & Sewer Maintenance (per year)



35%

Pop 35-64: One Type of Health Insurance



\$192,285

Median Home Value



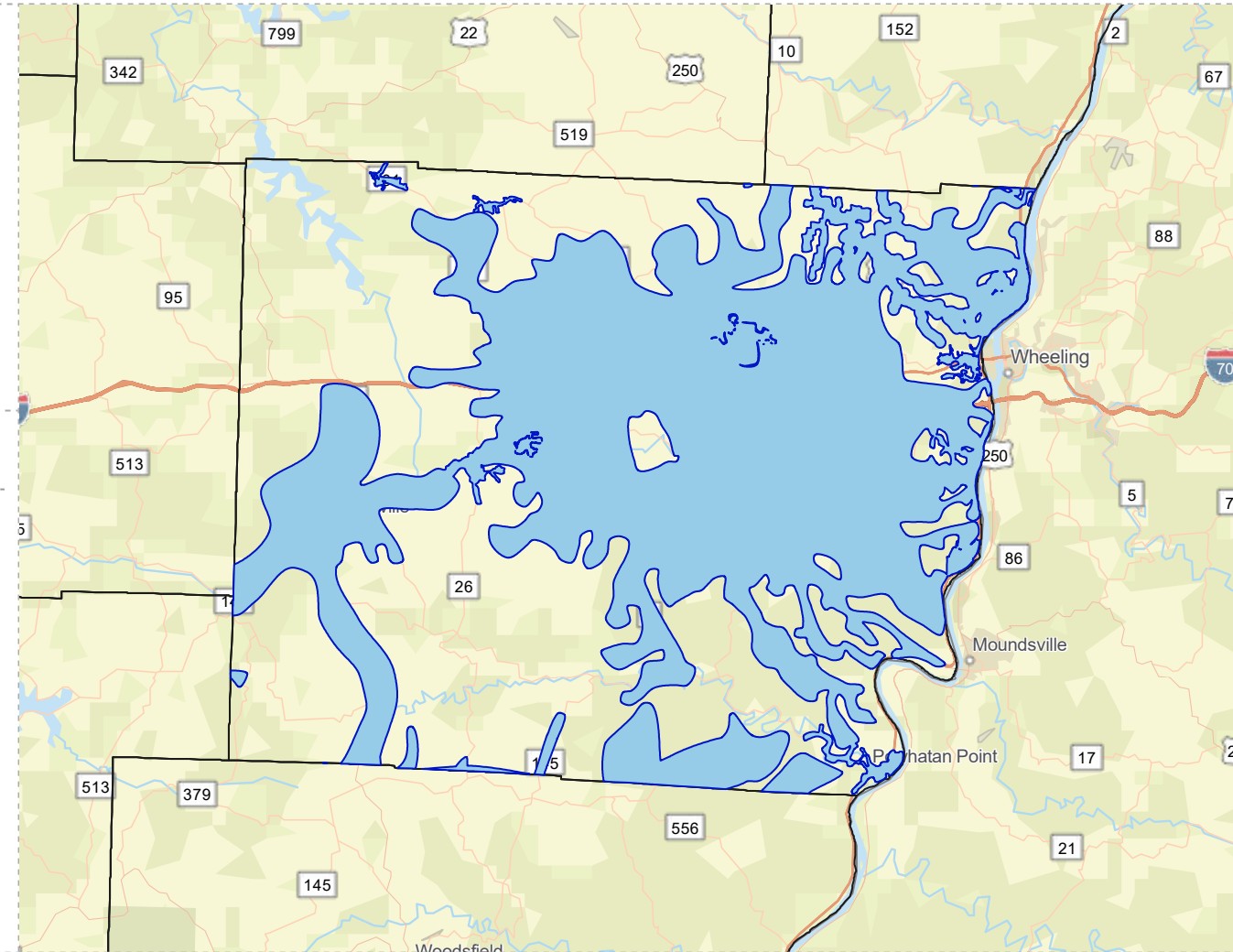
89%

Household Owns or Leases Any Vehicle



21%

Household Spent \$1-\$99 in Average Week at Food Stores



BELMONT COUNTY WITHOUT PUBLIC WATER ACCESS

Belmont_Co_Without_Water

Area: 269.3 square miles



Voinovich School of Leadership and Public Service

Source: Generalized drinking water coverage data overlay with U.S. Census Bureau, Census 2010 Summary File 1. Esri forecasts for 2021 and 2026. All survey-based estimates are subject to sampling error. The calculated population displayed with Census data measures the variability of the estimates.

POPULATION



12,442

Total Population



46.9

Median Age

INCOME



13%

Households Receiving Food Stamps/SNAP



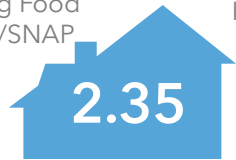
\$48,094

Median Household Income



13%

Households Below the Poverty Level



2.35

Average Household Size



33%

Households with 1+ Persons with a Disability

EMPLOYMENT



53%

White Collar



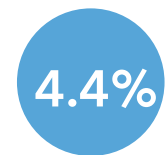
33%

Blue Collar



14%

Services



4.4%

Unemployment Rate

EDUCATION



10%

No High School Diploma



45%

High School Graduate



31%

Some College



14%

Bachelor's/ Grad/Prof Degree

MISCELLANEOUS FACTS



87%

Have Internet Access at Home



\$519

Average Household Cost of Water & Sewer Maintenance (per year)



36%

Pop 35-64: One Type of Health Insurance



\$186,364

Median Home Value



89%

Household Owns or Leases Any Vehicle



22%

Household Spent \$1-\$99 in Average Week at Food Stores

