



The **Hydropool** Hot Tub HydroGuide

Make an informed decision about your long term investment.



CEC Approved



HYDROPOOL
hot tubs • swim spas



HYDROPOOL
evergreen
commitment

The Evolution of Energy Efficiency in a Hydr opool Hot Tub.



The Energy Efficiency Story...

1990, NO FOAM

1992, NO FOAM CHANGES TO FULL FOAM

Why?

- Better insulation
- Supported pipes

1996, FULL FOAM CHANGES TO PERIMETER FOAM

Why?

- Water will take the path of least resistance hence, if there was a problem with the plumbing the water could appear on the other side
- It is difficult to service because there is no access to plumbing without a full dig out
- Not able to access plumbing without compromising the insulation or structural integrity
- Each motor creates 1.5 kw of heat and all of that heat was being expelled from the hot tub as opposed to being used to help heat the water



2000, PERIMETER FOAM CHANGES TO HYDROWISE THERMAL SHIELD

Why?

- Causes leaks due to plumbing support issues
- Gaps in panels allow heat to escape
- The Motor needs to breath, and without vents it overheats and causes the pumps to fail



2005 - PRESENT, HYDROWISE THERMAL SHIELD TECHNOLOGY

Why?

- Polyfilm barrier supports the plumbing
- Easy access to service
- Uses the waste heat of the motor, shell and pipes to heat the hot tub
- Eco heat exchange Venting to expel the heat in the summer and trap the heat in the winter



(1

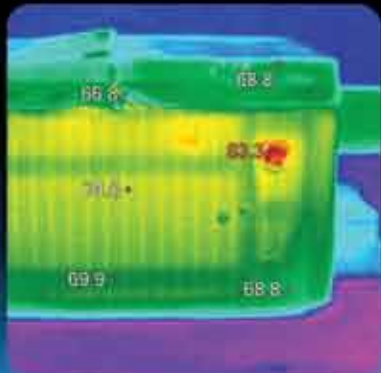
2)



With your Hydropool Hot Tub...



1) Extend



2) Protect



3) Save

1) Extend The Life Of Your Water.



Self Clean Mode

Less Time Filtering = Better Energy Efficiency
Better Filtration = Less Water Turnover

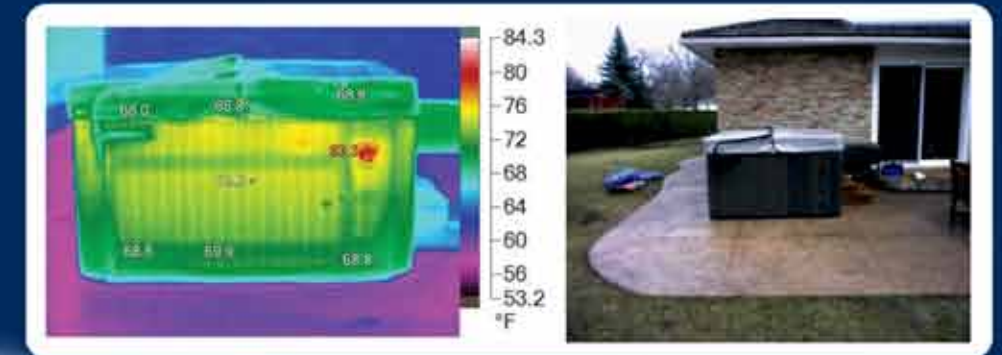
How?

Self-Cleaning Hot Tubs filter 100% of the water every 15 Minutes. This means the hot tub doesn't have to be on as long as any other hot tubs to filter the same amount of water. Our HydroClean Filtration pumps operate on 40% less electricity than a standard pumps.

2) Protect Your Hot Water From The Cold Extremes.
Hydrowise Heat Shield Cover

Made for Canadian Winters

- Four inches thick in the middle and tapers to three inches on each end.
- Insulated bumper down the fold area of the cover.
- Supports up to 250lb.
- **80% of all heat is lost through the cover.**
- Safety Locks on both sides.



▲ **Hydropool 495-2.is2**
4/11/2011 9:26:43 AM
Thermal image with temperature variances throughout hot tub.

▲ **Visible Light Image**

2) Protect Your Hot Water From The Cold Extremes.

Thermal Shield Blanket

"R" Value

Closed Cell Foam - R 5.5

Open Cell Foam - R4.3

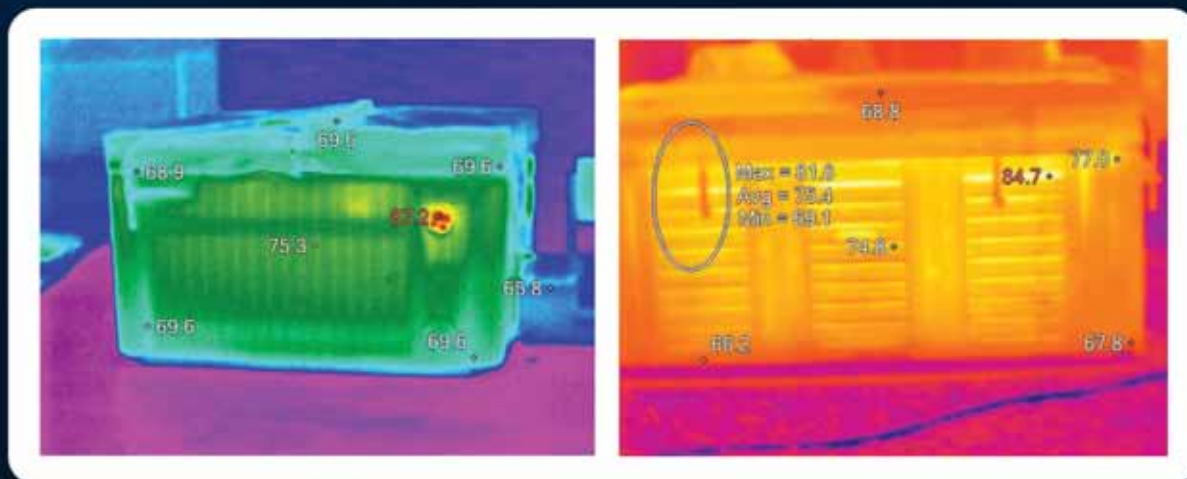
Ayr Foil A2V Foil - R14- R16

How?

- Triple Thermal Shield protection (Pipes, Cabinet, Floor)
- Traps the waste heat of the Motor, Pipes, shell and reflects the heat back into the water.
- Black Pipe Technology absorbs heat.
- N.A.S.A. inspired technology.

HYDROPOOL

COMPETITOR

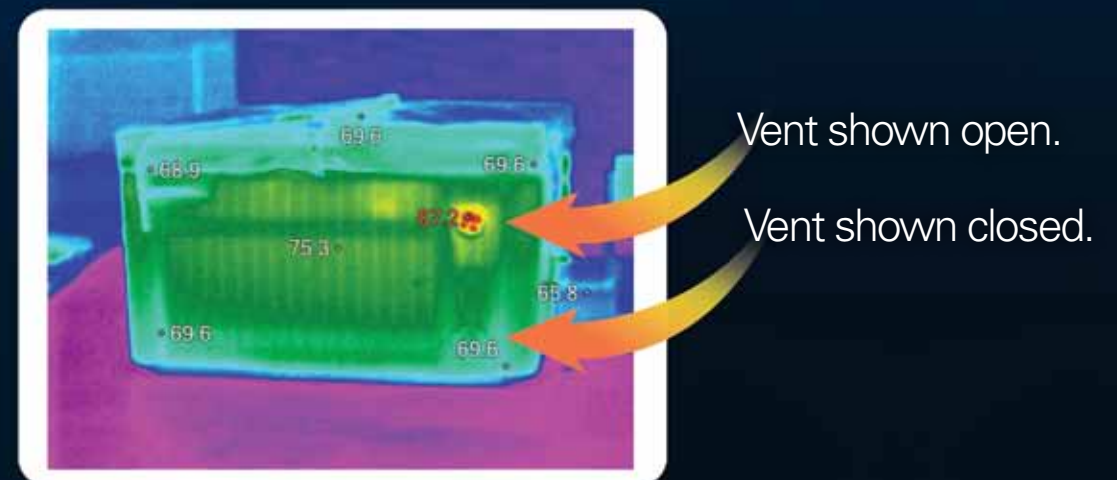


3) Saves Dollars By Keeping The Cold Out And The Warm In.

Eco Heat Exchange Thermal

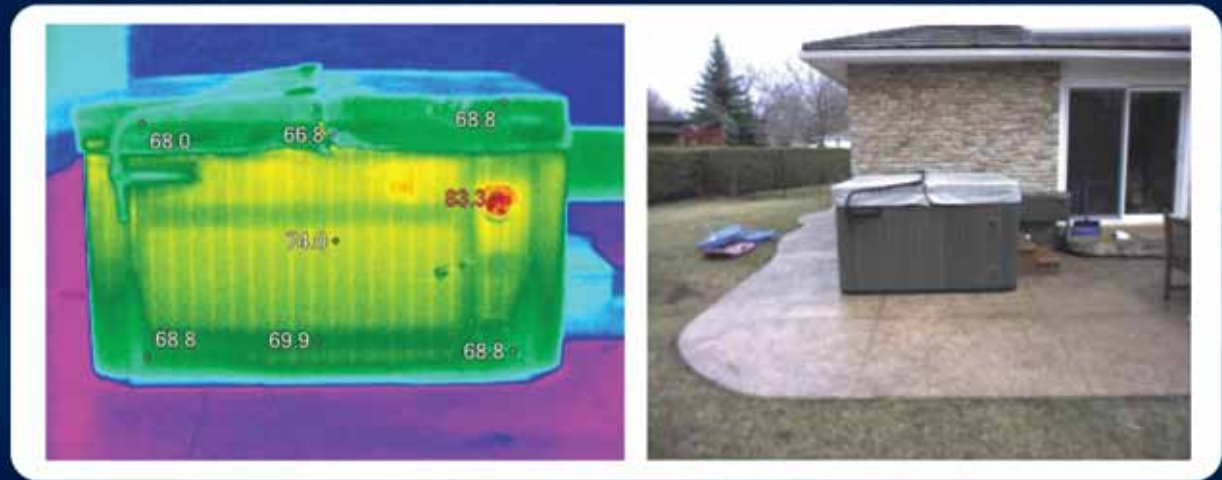
Increase Motor Performance And Durability

Located on either side of the cabinet, the adjustable thermal vents allow for cross ventilation across the motor area during the summer months and lock the heat in in the winter.



THERMAL SHIELD Thermal Imaging

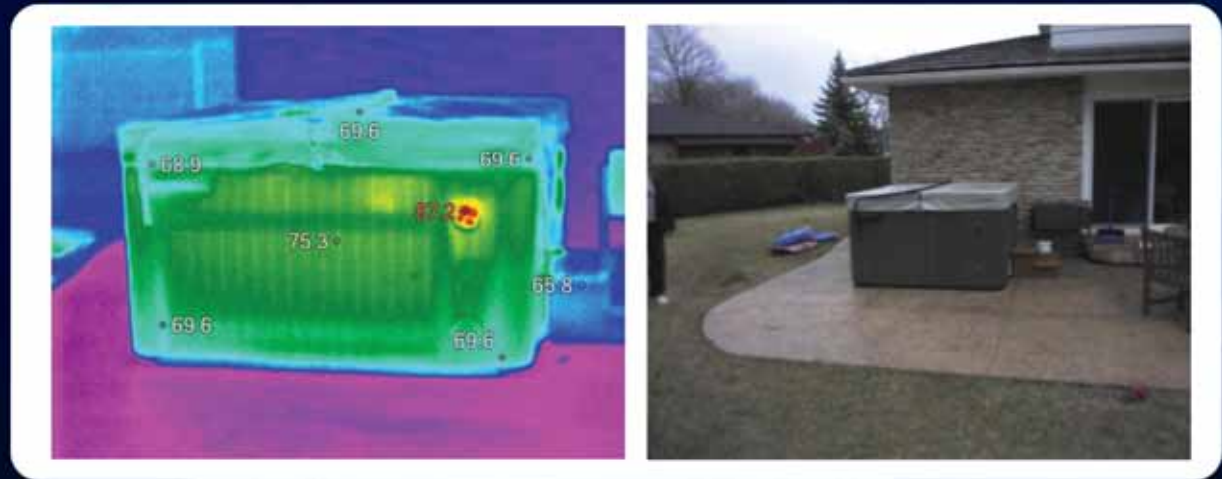
Hydropool, Georgetown, Ontario



▲ Hydropool 495-2.is2 *

▲ Visible Light Image

Hydropool, Georgetown, Ontario



▲ Hydropool 495-8.is2 *

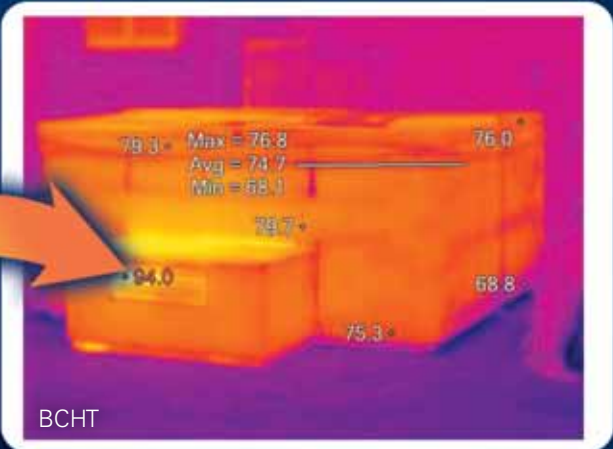
▲ Visible Light Image

*Thermal imaging produced by a 3rd Party Canadian Independent Engineering Firm

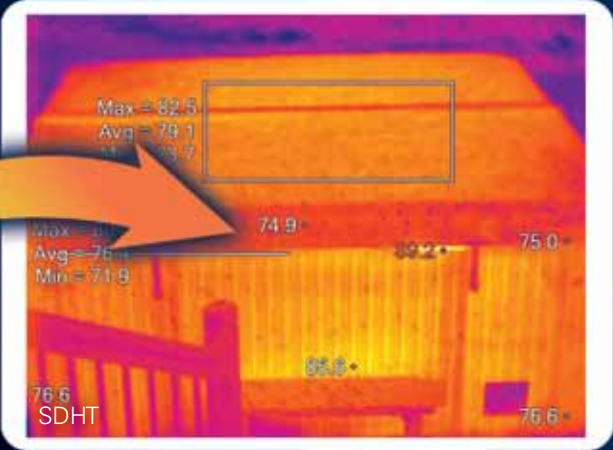
Full Foam Thermal Imaging

No Motor Heat Recovery

Rival Hot Tub
94°F



Rival #2 Hot Tub
89°F



Rival #3 Hot Tub
84.7°F



Full Foam HotTub Problems



Miles of plumbing
on a regular hot tub



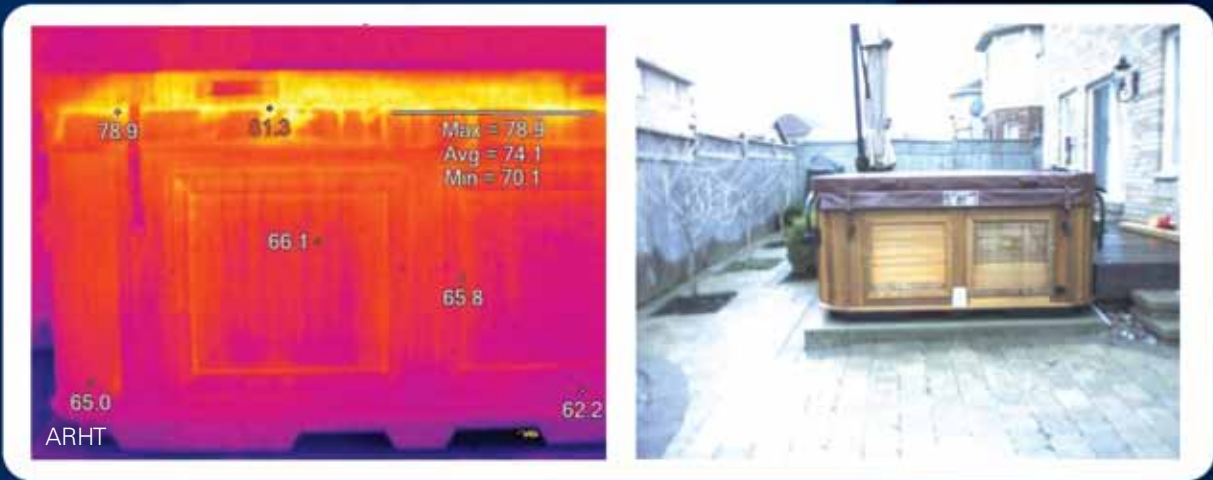
Tough to find leaks
in a full foam hot tub



Archeological dig in
the backyard

Perimeter Foam Thermal Imaging

Rival Competitor 1, Brampton, Ontario



▲ Rival Hot Tub 1 7.is2 *

▲ Visible Light Image

Rival Competitor 1, Brampton, Ontario



▲ Rival Hot Tub 1 12.is2 *

▲ Visible Light Image

* Thermal imaging produced by a 3rd Party Canadian Independent Engineering Firm

Perimeter Foam Hot Tub Problems

No support for plumbing



Test of Rival's Heat Lock System with a 90 second smoke bomb. Notice the amount of smoke escape



Summer Panel our Rival recommends at least 2 of these for summer use.

\$100.00 each.
(Normally sold after a over heating service call)



3) Save Money With Our Low Energy Pumps.
Our Evergreen Pumps have been designed to produce more GPM with less wattage.

Pump Analysis



This is a sliding scale that shows the industries range of hot tub pumps measured in watts/100 Gallons. This scale shows that Hydropools Pumps are some of the most efficient in the industry.

Please see page two for a list of each hot tubs pumps and page three for a direct comparison to some competitors..

Save Money With Our Evergreen Pumps.

HydroGuide Hot Tub Evergreen Pump Analysis

AQF XP2e Pump Efficiency / Spa Model:

Model	NA	EURO
	W/100gallons	W/m3*
SERENITY HOT TUBS		
4000 Gold	16.2	36.2
5000 Gold	16.2	36.2
5000 Platinum	18.9	42.09
6000 Gold	16.2	36.2
6000 Platinum	18.9	42.09
7000 Gold	16.2	36.2
7000 Platinum	18.9	42.09
8000 Platinum	18.9	42.09
SELF-CLEANING HOT TUBS		
395 Gold	15	33.67
395 Platinum	15	33.67
495 Gold	15	33.67
495 Platinum	15	33.67
575 Gold	15	39.56
575 Platinum	15	39.56
670 Gold	17.7	39.56
670 Platinum	17.7	39.56
695 Gold	17.7	39.56
695 Platinum	17.7	39.56
700 Platinum	17.7	39.56
800 Platinum	19.15	36.2
725 Platinum	17.7	39.56
775 Platinum	17.7	42.93
1038 Titanium	19.43	36.2
AVERAGE	17.42	38.92

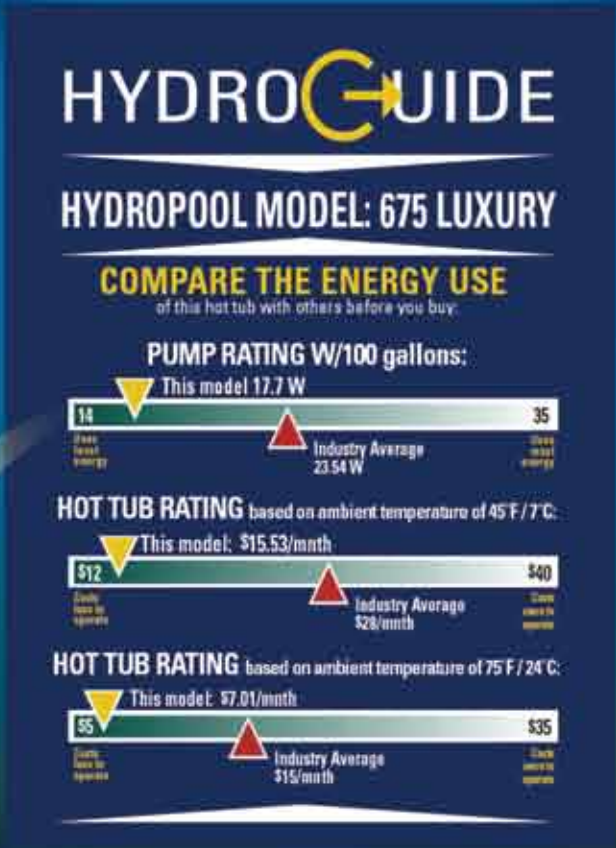
HYDROGUIDE

COMPETITOR ANALYSIS

BRANDS/MODEL:	North America W/100 Gallons:	Europe W/Cubic Metre:
Coast Spas Luxury Series	25.9667	58.5
Dynasty Spas - Paramount TV Spa	22.1198	49.84
Sundance Spas - Maxxus	21.85	49.23
Jacuzzi Spas - J-470	22.4103	50.49
HotSpring - Envoy	21.4216	48.26
Artic Spas - Summit	29.1333	65.64
Cal Spas - D1870	21.85	49.23
Beachcomber 740	21.85	49.23
AVERAGE:	23.54	53.03
HYDROPOOL AVERAGE:	17.42	38.92
MODEL COMPARISON:	N. America (%)	Europe (%)
HYDROPOOL vs. COMPETITION	26% BETTER	27% BETTER

Save Time & Hassle Go With A Proven Comparison.

Designed To Exceed Cec Ratings.



Energy Use Analysis at an ambient temperature of 45F and 75F — This sliding scale shows the industry range of hot tubs. The scale is based on the price per kw in Ontario, which means that the scale and costs will differ in different parts of the world.

This scale shows that Hydropool Hot Tubs are the most efficient hot tubs in the world.



Sound Levels

What Creates Increased Noise Levels...

- Hot tub equipment is not housed behind the insulation but just behind the cabinet.
- Oversized equipment, too much power for the number of jets in the design.
- Too much horsepower; extra volume of water with no extra hydrotherapy benefit due to the fact that there is only a maximum amount of water the pipes can handle at any given time.
- Also having the equipment on the outside of your hot tub may provide better access, but it comes at a loss of peace and a cost in energy efficiency.

Keep in Mind These Levels To Understand Just How Loud These Hot Tubs Are In Comparison.

Jet engine at 100.....	140dB
Sandblasting, Loud Rock Concert.....	115dB
City Traffic (inside car).....	85dB
Telephone dial tone.....	80dB
Normal conversation at 3'.....	60-65dB
Whisper Quiet Library at 6'.....	30dB

Here Are The Results...

The testing of these hot tubs was done in a side-by-side comparison with proper professional sound testing equipment; each hot tub was tested with the Cover off and for an equal amount of time.

1) Hydropool Self-Clean Hot Tub

Equipment behind Insulation, Self-Clean Floor Vacuum with Optimized Surface Filtration

Low (Circulation & Self-Clean Mode On)

Sound level at 3 ft.: **41 dB**
Sound level at 20 ft.: **39.8 dB**

High (All Pumps On)

Sound level at 3 ft.: **58.1 dB**
Sound level at 20 ft.: **51.7 dB**

2) Competitor No1 (DYHT)

Major USA Manufacturer

Equipment behind Cabinet Only, Suction Filtration Grate Style.

Low (Stand By Mode)

Sound level at 3 ft.: **52.6 dB**
Sound level at 20 ft.: **47.1 dB**

High (All Pumps On)

Sound level at 3 ft.: **63.7 dB**
Sound level at 20 ft.: **60.6 dB**

3) Competitor No2 (HSHHT)

Major USA Manufacturer

Equipment behind Cabinet Only, Vertical Suction Side Filtration with Multiple Filters.

Low (Stand By Mode)

Sound level at 3 ft.: **41.8 dB**
Sound level at 20 ft.: **40.2 dB**

High (All Pumps On)

Sound level at 3 ft.: **67 dB**
Sound level at 20 ft.: **64.8 dB**

4) Competitor No3 (CNHT)

Chinese Manufacturer

Equipment behind Cabinet Only, Lily Pad Suction Side Filtration.

Low (Stand By Mode)

Sound level at 3 ft.: **52.1 dB**
Sound level at 20 ft.: **50.5 dB**

High (All Pumps On)

Sound level at 3 ft.: **67.4 dB**
Sound level at 20 ft.: **65.7 dB**

5) Competitor No4 (SDHT)

Major USA Manufacturer

Equipment behind Cabinet Only, Horizontal Suction Side Filtration.

Low (Stand By Mode)

Sound level at 3 ft.: **48.7 dB**
Sound level at 20 ft.: **47.6 dB**

High (All Pumps On)

Sound level at 3 ft.: **64.8 dB**
Sound level at 20 ft.: **62.8 dB**



HYDROPOOL
hot tubs • swim spas



the **HYDROPOOL** HydroGuide

HYDROPOOL INC.

335 Superior Avenue, Mississauga, Ontario, Canada L5T 2L6

www.hydropoolhottubs.com www.swimspas.com

Property of: