

# CompactDry™

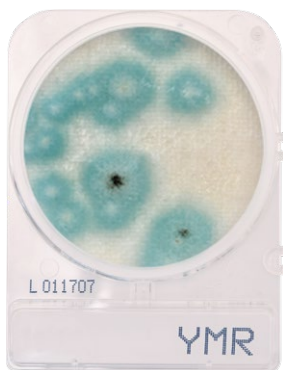
CompactDry™ is a ready to use petri plate containing a dehydrated culture media matrix that offers a variety of organism-specific or total count tests. Chromogenic substrates, provide easy organism differentiation, identification and counting.



## CompactDry™ BC Total Count

For the presumptive detection of *Bacillus cereus* in raw materials, finished products, or on environmental surfaces pertaining to food and other related industries.

100/pk XBC100



## CompactDry™ YMR Yeast and Mold Rapid

For the isolation and enumeration of yeast and mold. Yeast colonies will appear blue, and molds will form cottony colonies with characteristic colors.

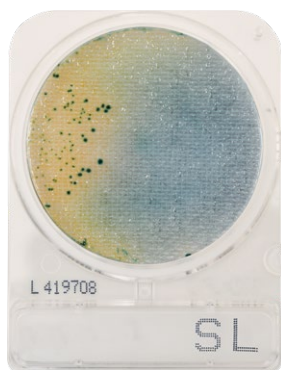
Incubation time: 48-72 hrs.  
240/pk 54084



## CompactDry™ TCR Total Count Rapid

For total aerobic viable bacterial count using traditional or rapid enumeration methods. Growing colonies will appear red.

240/pk 54088



## CompactDry™ SL *Salmonella*

For the presumptive identification of *Salmonella* spp. Growing colonies will appear green or blue-green with black centers.

240/pk 54085



## CompactDry™ LS *Listeria*

For the selective growth, presumptive identification, and enumeration of *Listeria* spp. Growing colonies will appear blue.

100/pk LS100



## CompactDry™ EC *E. coli* and Coliforms

For the isolation and enumeration of coliforms and *E. coli*. Coliform colonies will appear red, and *E. coli* colonies will appear blue.

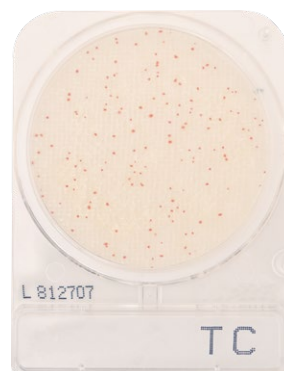
240/pk 54082



## CompactDry™ YM Yeast and Mold

For the isolation and enumeration of yeast and mold. Yeast colonies will appear blue, and molds will form cottony colonies with characteristic colors.

Incubation time: 3-5 days.  
240/pk 54083



## CompactDry™ TC Total Count

For total aerobic viable bacterial count. Growing colonies will appear red.

240/pk 54081



## CompactDry™ PA *Pseudomonas aeruginosa*

For the enumeration of *Pseudomonas aeruginosa* in food samples, feedstuffs, water, cosmetics, and beverages, or material samples from related industries.

100/pk PA100



## CompactDry™ ETB *Enterobacteriaceae*

For the isolation and enumeration of *Enterobacteriaceae* that will appear red in color.

100/pk ETB100



## CompactDry™ XSA *Staphylococcus aureus*

For the selective growth, enumeration, and differentiation of *Staphylococcus aureus*. Growing colonies will appear light blue to blue.

240/pk 54086

# Wizard™

## CompactDry™ Reader

The **Wizard™ CompactDry™ Reader**, a small instrument that will make a big impact on reducing the time spent counting colonies by hand.



### Your choice of data retrieval:

- Printout
- Thumb Drive
- LIMS Connection

**Automate** your colony counts and **expand** your throughput capabilities.

Cat. no. CDR2

### COLONY COUNT IN SECONDS

Save technician hours on this simple, yet tedious task to maximize your efficiency.

### SIMPLE IMPLEMENTATION

Easy-to-understand instructions make for simple Standard Operating Procedures, allowing you to easily train your team and begin utilizing automation for your colony counts.

### COMPLIANCE MADE EASY

Make data compliance easy in any lab with several ways to save your test results. Transfer to LIMS software, save directly to USB, or print your data.

### CONSISTENCY WHERE IT COUNTS

The Wizard™ brings a precise colony count standard to each and every set of plates, eliminating the risk of human error and inconsistency.

