



Creative Solutions. Impressive Results.



**CREATIVE  
SOLUTIONS.  
IMPRESSIVE  
RESULTS.**  
GRAPHIC DESIGN  
PRINTING  
MARKETING  
BRANDING  
CUSTOM APPAREL  
TRADESHOWS  
SIGNAGE

# 20 25 CATALOG

270-827-5577 | [WWW.ABBAPROMOTIONS.COM](http://WWW.ABBAPROMOTIONS.COM) | We ship nationwide!

# We provide clients with marketing tools that fit specific objectives.

*We think you shouldn't buy promotional products or design without a plan.*

In fact, we don't believe you should buy **ANY** type of advertising without knowing the result that you expect to receive. We DO believe in the power of well-planned, well-executed promotions that have specific objectives.

When effectively designed, a promotion can provide more "bang for your buck" than any other type of advertising. Lucky for us, many marketing firms don't understand the difference between a give-away and a promotion... or how to design a successful promotion.

**ABBA PROMOTIONS** provides marketing products and services to clients throughout the country. We've worked with over 62 political campaigns and many non-profits. Clients have ranged from small businesses to Fortune 500 companies such as Tyson Foods, Bristol Myers, and ClearChannel Radio.

You can buy t-shirts and coffee mugs from almost anyone... but it takes a skilled marketing professional to help you plan a promotion designed to meet your specific marketing objectives within your budget and time-frame.

If you are a regular client of Abba Promotions, then you already know the value of having a close relationship with a marketing professional.

If you're not... **we can't wait to show you.**



Ty Rideout, Owner



## NONPROFIT BRANDING & ADVERTISING



### STATIONERY

Custom letterheads, greeting cards, and envelopes are great tools to use as mailers for invites, newsletters, thank-you notes, or general materials to reach your audience.



### FUNDRAISING & MEMBERSHIP MATERIALS

Use flyers and brochures to advertise and reach more people. Then provide them with more information on a cause or organization with booklets, catalogs, and presentation folders.



### PROMO MATERIALS

Promo materials are a fun way to energize people. T-shirts, mugs, and stickers are generous giveaways to equip volunteers with during important causes and events. In addition to promoting your cause, these promo materials serve as a great marketing tool.

Promo Materials	Fundraising & Membership Materials	Stationery
<ul style="list-style-type: none"><li>• T-Shirts</li><li>• Mugs</li><li>• Buttons</li><li>• Tote Bags</li></ul>	<ul style="list-style-type: none"><li>• Booklets &amp; Catalogs</li><li>• Flyers &amp; Brochures</li><li>• Sell Sheets</li><li>• Presentation Folders</li></ul>	<ul style="list-style-type: none"><li>• Greeting Cards</li><li>• Invitations</li><li>• Announcements</li><li>• Envelopes</li><li>• Letterheads</li><li>• Business Cards</li><li>• Notepads</li></ul>



Need a custom quote, or a higher quantity? Call us at  
**270-827-5577**

- or -  
Check us out **ONLINE!**  
**abbapromotions.com**

**WE SHIP NATIONWIDE!**

Need a custom quote, or a higher quantity? Call us at  
**270-827-5577**

- or -  
Check us out **ONLINE!**  
**abbapromotions.com**

**WE SHIP NATIONWIDE!**







# EDUCATION SCHOOL SPIRIT

## BOOKLETS & CATALOGS

Great for delivering information in course listings, event programs, graduation handouts, and much more. Booklets and catalogs are colorful, durable, and informative tactile resources.



## STATIONERY

For orientations, official documents, take-homes, and mailers, stationery materials are essential to day-to-day activities in education.

### Spirit Gear

- T-Shirts
- Mugs
- Buttons
- Tote Bags
- Bumper Stickers

### Stationery

- Greeting Cards
- Envelopes
- Letterheads
- Business Cards
- Notepads
- Presentation Folders

## SPIRIT GEAR

Be loud and proud with a wide variety of products that can show your school spirit. With t-shirts, buttons, bumper stickers, and much more, there's something for everyone.



# FOOD & BEVERAGE RESTAURANT HOSPITALITY

## DISPLAY PRODUCTS

Counter displays are useful in entry ways, reception areas, concierge, and at checkout. Table throws can reinforce your brand while creating attractive table coverings for events and for everyday display.



## INDOOR/OUTDOOR SIGNAGE

Draw attention to your featured products and promotions from across the room or street with large banners and signage.

## FLOOR & WINDOW GRAPHICS

Advertise on these underutilized surfaces to creatively bring attention to your current promotions.



## MENUS AND DIRECT MARKETING

Get the word out with direct marketing postcards, door hangers and take-away menus. Durable in-house menus can also enhance your brand.



### Display Products

- Tabletop Retractable
- Table Tents
- Counter Cards
- Table Throws
- Table Runners

### Signage

- Banners
- Stand Banners
- Posters
- Backlit Posters

### Sales Materials

- Booklets & Catalogs
- Flyers & Brochures
- Postcards
- Endurance Water-Resistant

### Floor & Window Graphics

- Floor Vinyl
- Clear and/or Opaque Window Clings
- See-Through Window Graphics



# HEALTH CARE MARKETING PRODUCTS

## PROMO PRODUCTS

Increase brand recognition with promotional products. Get creative by adding logos and taglines to t-shirts, mugs, tote bags and more. Not only are you promoting your organization but you're also spreading the word on the many benefits of your health products and services.



### Collateral Materials

- Booklets & Catalogs
- Flyers
- NCR Forms
- Notepads
- Roll Labels

### Stationery

- Business Cards
- Letterheads
- Presentation Folders
- Envelopes
- Appointment Cards

### Promo Products

- T-Shirts
- Mugs
- Calendars
- Tote Bags



## COLLATERAL MATERIALS

Every health and wellness business provides products or services. Make sure you're equipped with the collateral materials needed to raise awareness about your unique offerings.

## STATIONERY

The ideal way to boost industry and company awareness in the health and wellness fields is by using fully customizable stationery products. It serves as one of the most necessary and important tools for distributing important information to clients and patients.

# BANNERS

- » CUSTOM, FULL COLOR, VINYL BANNERS
- » UP TO 1/2 HOUR GRAPHIC DESIGN INCLUDED
- » 13 OZ. SCRIM VINYL
- » WITH GROMMETS EVERY 2-3' INCLUDED.

Pole pockets, and standard hemmed edges are provided at no extra charge upon request. Have a tight event date? Let us know!



NEED A LARGER BANNER?

NEED A HUGE QUANTITY OF BANNERS?

No problem! For a fast quote, Just let us know the size you need, what quantity, and when you need it (especially if it is needed for an event!).

Double sided banners? Double the pricing.

18 oz. banner? Add \$1/sq ft to pricing.

Mesh banner? Add \$1.00/sq ft to pricing.

## PRICING

2' X 2' » \$35	3' X 2' » \$40	4' X 2' » \$45	5' X 2' » \$50
2' X 4' » \$45	3' X 4' » \$55	4' X 4' » \$65	5' X 4' » \$75
2' X 6' » \$55	3' X 6' » \$65	4' X 6' » \$85	5' X 6' » \$100
2' X 8' » \$65	3' X 8' » \$85	4' X 8' » \$95	5' X 8' » \$120
2' X 10' » \$75	3' X 10' » \$100	4' X 10' » \$120	5' X 10' » \$155
2' X 12' » \$85	3' X 12' » \$115	4' X 12' » \$145	5' X 12' » \$180
2' X 14' » \$90	3' X 14' » \$130	4' X 14' » \$170	5' X 14' » \$210
2' X 16' » \$95	3' X 16' » \$145	4' X 16' » \$190	5' X 16' » \$240
2' X 20' » \$115	3' X 20' » \$180	4' X 20' » \$240	5' X 20' » \$300
2' X 40' » \$200	3' X 40' » \$360	4' X 40' » \$480	5' X 40' » \$600
10' X 10' » \$300	10' X 20' » \$600	20' X 20' » \$1200	30' X 30' » \$1800

IH UP2 5' W — 5'+ \$365



# Telescopic Backdrop Banners

*Make a Big Marketing Statement*

Telescopic Backdrop Banners provide the branding coverage needed to grab the attention of current and prospective customers in any situation. They are high quality and versatile enough to be showcased indoors, and waterproof and durable enough to withstand the elements outdoors. Comes equipped with 4" pockets at the top and bottom for easy-to-set-up capabilities. Includes a portable carrying case to conveniently store the stand's parts and travel with ease.



## BACKDROP BANNER

B2S

5 x 7 – \$315    6 x 6 – \$320  
8 x 8 – \$325    10 x 8 – \$345

Our Backdrop Banners provide a great low-cost backdrop for press conferences, interviews, red carpet events, trade shows, and exhibitions. A high-quality full color digitally printed backdrop banner stand!

- » Printed in America
- » Printed on premium polyester fabric material
- » Light absorbing Matte finish making it perfect for photography
- » Includes adjustable poles for custom sizes
- » Vibrant full-color single sided dye sublimated print
- » Strong black anodized adjustable aluminum stand
- » Easy to assemble in minutes
- » Packs away into a durable compact nylon carry bag
- » 5-year warranty on hardware

# BANNER STANDS

**Take a Stand and Make a Lasting Impression!**



## BANNER RETRACTORS

B2S

**FULL COLOR, DELUXE BANNER RETRACTOR WITH HIGH QUALITY FABRIC, CUSTOM DESIGN, HARDWARE, AND LIFETIME WARRANTY \$235 FOR 1 OR \$205 EA @ QTY. 2+**

Our Deluxe Banner Stand is simplistic and elegantly designed. It is finished in anodized silver or black with heavy duty molded end plates. Padded carry bag is included. Hardware kit includes: Base, top rail, hybrid pole assembly and soft case.

- » **Size: 33" x 81"**
- » **Anodized black or silver base options**
- » **Hybrid bungee/ telescoping pole with tool less quick rail**
- » **Adjustable feet on base**
- » **Molded end plates**
- » **Supplied with a padded carry bag with strap**
- » **Lifetime warranty against all manufacturers defects**

### ON A BUDGET?

Consider our Economy Banner Stand, a lighter weight unit with 30 day warranty (hardware only). \$155 ea. or \$125 ea. for quantity 2 or more.



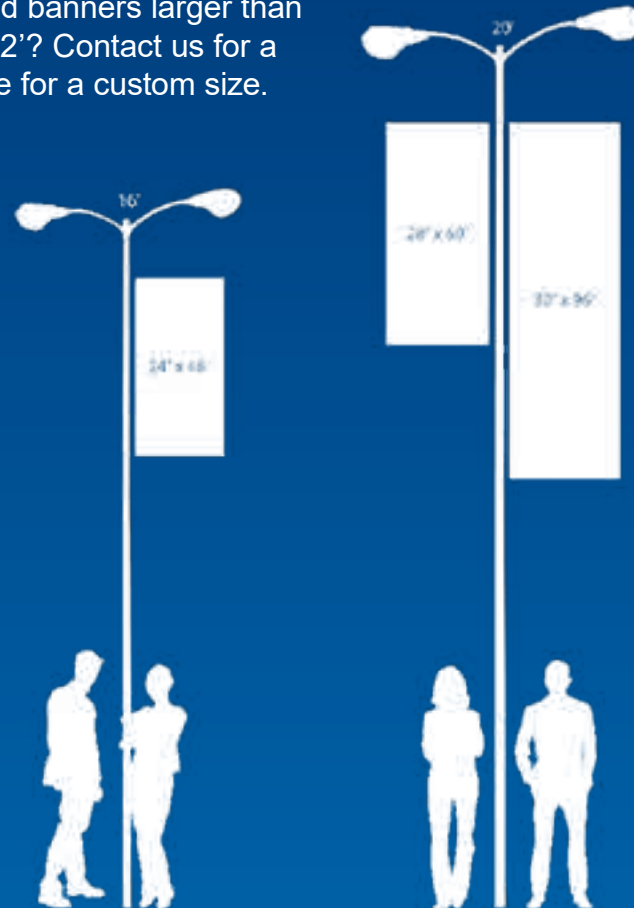
# POLE BANNERS <sup>IH</sup>

**DOUBLE-SIDED POLE BANNERS MEASURING 4 FEET HIGH BY 2 FEET LONG, INCLUDES BOTH SIDES, POLE POCKETS SECURED BY GROMMETS.**

\$90 each at qty 1  
\$75 each at qty 2  
\$59 each at qty 4  
\$55 each at qty 8  
\$45 each at qty 16  
\$42 each at qty 24  
\$37 each at qty 48  
\$35 each at qty 96

Need hardware? Our pole banner hardware is sold in kits which include 2 Fiberglass Arms, 2 Mounting Brackets and 4 Steel Bands. Price per kit \$52.

Need installation? Please request a custom quote. Need banners larger than 4' x 2'? Contact us for a price for a custom size.



# FEATHER <sup>B2S</sup> FLAGS

**FULL COLOR SINGLE SIDED PRINT-THRU STANDARD. INCLUDES POLE SET AND INCLUDES OUTDOOR GROUND STAKE STANDARD. (ADD INDOOR CROSS BASE, TOO FOR \$24). INCLUDES CARRY BAG.**

**FEATHER FLAGS  
SINGLE SIDED  
PRINT-THRU STANDARD  
ADD 50% FOR DOUBLE SIDED**

9ft. Tall  
Qty 1 » \$125 ea  
Qty 2 to 4 » \$105 ea  
Qty 5 or more » \$99 ea

14ft. Tall  
Qty 1 » \$131 ea  
Qty 2 to 4 » \$111 ea  
Qty 5 or more » \$105 ea

18ft. Tall  
Qty 1 » \$240 ea  
Qty 2 to 4 » \$202 ea  
Qty 5 or more » \$191 ea



# POLE <sup>B2S</sup> FLAGS

**SINGLE SIDED FLAG WITH CANVAS HEADER & GROMMETS ON LEFT SIDE. HARDWARE NOT INCLUDED.**



**POLE FLAGS  
SINGLE SIDED  
PRINT-THRU STANDARD  
ADD 50% FOR DOUBLE SIDED**

2x3  
Qty 1 » \$65 ea  
Qty 2 to 4 » \$43 ea  
Qty 5 or more » \$34 ea

3x5  
Qty 1 » \$95 ea  
Qty 2 to 4 » \$79 ea  
Qty 5 or more » \$65 ea

4x6  
Qty 1 » \$130 ea  
Qty 2 to 4 » \$110 ea  
Qty 5 or more » \$102 ea



# Table Throws

Turn Tables into Premium Ad Spaces

Heavy 9oz Premium Polyester Fully customizable

## ECONOMY

your DESIGN HERE

## STRETCH

## DELUXE

### TABLE THROWS B2S

Our Economy Table Cover are available in the following colors:

ROYAL	RED	GREEN
WHITE	YELLOW	BEIGE
BURGUNDY	GRAY	PURPLE
	BLACK	

**ECONOMY**  
Qty 1 » \$160 ea, Qty 2+ » \$140 ea

**DELUXE OR STRETCH**  
4' – Qty 1 » \$170 ea, Qty 2+ » \$149 ea  
6' – Qty 1 » \$195 ea, Qty 2+ » \$175 ea  
8' – Qty 1 » \$220 ea, Qty 2+ » \$195 ea

Pricing includes proof, setup, and print.

# Event Tent

## EVENT TENTS

**79OZPOLY-OUTDOORTENT-120X120**  
Custom full color 10' x 10' tent, including hardware, fabric, print, and shipping » \$795.00  
Add a rolling carry bag » \$60  
Add a custom printed half-wall » \$175  
Add a custom printed full-wall » \$245

Produce art proof (1-2 business days).  
Production (7-9 business days after acceptance of proof).

Event Tents are the perfect large-scale marketing medium to get noticed at festivals, conventions, trade shows and more. They include 4 fabric panels that can feature up to 4 different designs (one for each side). These easy to assemble tents are great for music festivals, golfing events, outdoor trade shows and tent booths.

- » Full color dye-sublimation graphic.
- » Scratch resistant tent fabric.
- » Weather resistant tent fabric coated in a water proof layer.
- » Our pop up tents include a carrying bag with wheels.
- » All fittings are made from aluminum, making our pop up tents more durable and resistant to wear and tear.
- » 40mm Hex aluminum frame with adjustable legs.

B2S



**SIDEWALLS & BACKWALL  
OPTIONAL**





INCLUDES FULL COLOR!

INCLUDES DESIGN!

INCLUDES SETUP!

INCLUDES SHIPPING (on 10 or more)!

INCLUDES THE ABSOLUTE BEST CUSTOMER SERVICE!

270-827-5577 • WWW.ABBAPROMOTIONS.COM • INFO@ABBAPROMOTIONS.COM

4' x 8', FULL COLOR CORRUGATED PLASTIC SIGNS,  
4MM, WITH GROMMETS, SINGLE SIDED

1 @ \$90

5 @ \$70

10 @ \$60

25 @ \$58

50 @ \$56

SIGNS

4' x 8' FULL COLOR CORRUGATED PLASTIC SIGNS,  
4MM, WITH GROMMETS, DOUBLE SIDED

1 @ \$115

5 @ \$100

10 @ \$90

25 @ \$75

50 @ \$72

4' x 4', FULL COLOR CORRUGATED PLASTIC SIGNS,  
4MM, WITH GROMMETS, SINGLE SIDED

1 @ \$50

5 @ \$45

10 @ \$40

25 @ \$30

50 @ \$28

SIGNS

4' x 4' FULL COLOR CORRUGATED PLASTIC SIGNS,  
4MM, WITH GROMMETS, DOUBLE SIDED

1 @ \$75

5 @ \$55

10 @ \$48

25 @ \$40

50 @ \$39

2.66' x 4' FULL COLOR CORRUGATED PLASTIC SIGNS,  
4MM, WITH GROMMETS, SINGLE SIDED

1 @ \$35

5 @ \$25

10 @ \$24

25 @ \$23

50 @ \$22

SIGNS

2.66' x 4' FULL COLOR CORRUGATED PLASTIC SIGNS,  
4MM, WITH GROMMETS, DOUBLE SIDED

1 @ \$48

5 @ \$38

10 @ \$33

25 @ \$27

50 @ \$28

2' x 4' FULL COLOR CORRUGATED PLASTIC SIGNS,  
4MM, WITH GROMMETS, SINGLE SIDED

1 @ \$40

5 @ \$25

10 @ \$18

25 @ \$17

50 @ \$16

SIGNS

2' x 4' FULL COLOR CORRUGATED PLASTIC SIGNS,  
4MM, WITH GROMMETS, DOUBLE SIDED

1 @ \$50

5 @ \$29

10 @ \$25

25 @ \$23

50 @ \$21

18" x 24" FULL COLOR, CORRUGATED PLASTIC SIGNS,  
4MM, WITH WIRE FRAMES, SINGLE SIDED

1 @ \$25

5 @ \$18

10 @ \$12

20 @ \$9

30 @ \$8.50

40 @ \$8

50 @ \$7.50

100 @ \$7.25

200 @ \$6.75

500+ quoted

Need your signs produced by a union?

Or, something else special?

Just ask us for a custom quote!

Need a different material?

6mm corrugated plastic » Add \$.90/sq ft

10 mm corrugated plastic » Add \$1.15/sq ft

3mm PVC » Add \$.90/sq ft

6mm PVC » Add \$2/sq ft

3mm maxmetal » Add \$2/sq ft

FEW- 1H ~ LOTS- BWPRINT ~ 1COLOR-YARDSIGNWHOLESALE

18' x 24" FULL COLOR CORRUGATED PLASTIC SIGNS,  
4MM, WITH WIRE FRAMES, DOUBLE SIDED

1 @ \$30

5 @ \$20

10 @ \$13

20 @ \$10

30 @ \$9.50

40 @ \$9

50 @ \$8.50

100 @ \$8.25

200 @ \$7.90

500+quoted

NEED SEVERAL SIGNS, ON A SUPER TIGHT BUDGET & HAVE A SIMPLE DESIGN?

INCLUDES DESIGN!

INCLUDES SETUP!

INCLUDES SHIPPING!

INCLUDES THE ABSOLUTE BEST CUSTOMER SERVICE

4' x 8' CORRUGATED PLASTIC SIGNS,  
1 color+ White

4MM, WITH GROMMETS  
DOUBLE SIDED

10 @ \$85 ~ 25 @ \$70

50 @ \$60 ~ 100 @ \$40

4' x 4' CORRUGATED PLASTIC SIGNS,  
1 color+ White

4MM, WITH GROMMETS  
DOUBLE SIDED

25 @ \$40

50 @ \$33 ~ 100 @ \$23

2' x 4' CORRUGATED PLASTIC SIGNS,  
1 color+ White

4MM, WITH GROMMETS  
DOUBLE SIDED

25 @ \$23

50 @ \$20 ~ 100 @ \$14

18' x 24" CORRUGATED PLASTIC SIGNS,  
1 color+ White

4MM, WITH WIRE FRAMES,  
DOUBLE SIDED

50 @ \$8

100 @ \$7.50

250 @ \$6.50

500 @ \$5.90

1000 @ \$4.70



Owning your own trade show booth provides a consistent, branded environment to showcase your products or services, ensuring a memorable and personalized experience for attendees. With a dedicated booth, you have full control over the design and layout, allowing you to tailor the space to match your company's unique identity. This setup also fosters direct engagement with potential clients, creating opportunities for valuable networking and sales. Additionally, owning a booth establishes your credibility, positioning you as a serious player in your industry, give your business a competitive edge.

MODEL

"19"

B2S

MODULAR TENSION FABRIC TRADESHOW KIT.  
DESIGNED FOR 10' X 10' TRADESHOW STALLS.  
SET INCLUDES BACKWALLS, PODIUM, LITERATURE/ TABLET STAND AND MORE.  
\$1950





# Tradeshows

## MODEL "25"

B2S

MODULAR TENSION FABRIC  
TRADESHOW KIT.  
DESIGNED FOR 10' X 10'  
TRADESHOW STALLS.  
SET INCLUDES BACKWALLS,  
PODIUM, MONITOR STAND  
AND MORE.  
\$2150



## MODEL "L"

B2S

MODULAR TENSION FABRIC  
TRADESHOW KIT.  
DESIGNED FOR 10' X 10'  
TRADESHOW STALLS.  
SET INCLUDES CURVED  
BACKWALL, PODIUM,  
STANDING TABLE, IPAD  
STAND AND MORE.  
\$2790



# Premium Quality PRESENTATION FOLDERS

FOR FIRST IMPRESSIONS THAT LAST!

## CUSTOM FOLDERS

Custom Designed 9x12 presentation  
folders on 14pt with UV Coating. Full color  
on outside and on pockets. Blank inside.  
Turnaround time 6 BUSINESS days after  
final proof approval. Includes professional  
graphic design, proof, setup, print, deliver.

10 » \$15 ea	500 » \$1.45 ea
25 » \$6.50 ea	1000 » \$1 ea
50 » \$3.90 ea	2500 » \$.80 ea
100 » \$3 ea	5000 » \$.69 ea
250 » \$2.25 ea	

Want to have an imprint on  
the inside as well?

10 » \$17 ea	250 » \$2.65 ea
25 » \$8 ea	500 » \$1.95 ea
50 » \$5.25 ea	1000 » \$1.30 ea
100 » \$4.65 ea	2500 » \$.88 ea
5000 » \$.78 ea	TRADEONLYFOLDERS







# RAFFLE TICKETS

Custom raffle tickets, 2" x 7", numbered, with perforated stub, layout, provide art proof, and print

## BLACK & WHITE TICKETS

50 » \$55  
100 » \$70  
250 » \$75  
500 » \$85  
1000 » \$90  
2500 » \$145  
5000 » \$195

## FULL COLOR TICKETS

50 » \$60  
100 » \$75  
250 » \$80  
500 » \$95  
1000 » \$110  
2500 » \$175  
5000 » \$265



# PARKING HANG TAGS/DECALS

IH EXCEPT PLASTIC

## Hang tags on card stock

50 » \$1.50  
125 » \$.90 ea  
250 » \$.60 ea  
500 » \$.35 ea  
1000 » \$.25 ea

## Hang tags on plastic

50 » \$3.90 ea  
125 » \$2 ea  
250 » \$1.25 ea  
500 » \$1.10 ea  
1000 » \$.75 ea

Economical alternative to hang tags:  
removable decal for windshield, 2" x 3"

50 » \$1 ea  
125 » \$.60 ea  
250 » \$.35 ea  
500 » \$.28 ea  
1000 » \$.20 ea

Setup, proof, print, and numbering included!  
(Please specify preferred start number when ordering)

# Expand your reach WITH MULTI-PAGE BOOKLETS

Catalog Your Lovely Products in **FULL COLOR**

4 Page - 8.5 x 11	8 Page - 8.5 x 11	12 Page - 8.5 x 11
25 » \$2 ea	25 » \$2.10 ea	25 » \$2.20 ea
50 » \$1.25 ea	50 » \$1.45 ea	50 » \$1.70 ea
100 » \$.75 ea	100 » \$.95 ea	100 » \$1.25 ea
250 » \$.50 ea	250 » \$.70 ea	250 » \$1 ea
500 » \$.35 ea	500 » \$.55 ea	500 » \$.85 ea
1000 » \$.31 ea	1000 » \$.55 ea	1000 » \$.80 ea
2500 » \$.30 ea	2500 » \$.52 ea	2500 » \$.78 ea
5000 » \$.27 ea	5000 » \$.41 ea	5000 » \$.59 ea
16 Page - 8.5 x 11	20 Page - 8.5 x 11	24 Page - 8.5 x 11
25 » \$2.45 ea	25 » \$2.75 ea	25 » \$4.25 ea
50 » \$2 ea	50 » \$2.30 ea	50 » \$3.30 ea
100 » \$1.50 ea	100 » \$1.80 ea	100 » \$2.45 ea
250 » \$1.30 ea	250 » \$1.60 ea	250 » \$2 ea
500 » \$1.15 ea	500 » \$1.45 ea	500 » \$1.65 ea
1000 » \$1.10 ea	1000 » \$1.40 ea	1000 » \$1.60 ea
2500 » \$1.08 ea	2500 » \$1.38 ea	2500 » \$1.57 ea
5000 » \$.87 ea	5000 » \$1.07 ea	5000 » \$1.20 ea
4 Page - 5.5 x 8.5	8 Page - 5.5 x 8.5	12 Page - 5.5 x 8.5
25 » \$1.20 ea	25 » \$1.26 ea	25 » \$1.32 ea
50 » \$0.75 ea	50 » \$0.87 ea	50 » \$1.02 ea
100 » \$0.45 ea	100 » \$0.57 ea	100 » \$0.75 ea
250 » \$0.30 ea	250 » \$0.42 ea	250 » \$0.60 ea
500 » \$0.21 ea	500 » \$0.33 ea	500 » \$0.51 ea
1000 » \$0.19 ea	1000 » \$0.33 ea	1000 » \$0.48 ea
2500 » \$0.18 ea	2500 » \$0.31 ea	2500 » \$0.47 ea
5000 » \$0.16 ea	5000 » \$0.25 ea	5000 » \$0.35 ea
16 Page - 5.5 x 8.5	20 Page - 5.5 x 8.5	24 Page - 5.5 x 8.5
25 » \$1.47 ea	25 » \$1.65 ea	25 » \$2.55 ea
50 » \$1.20 ea	50 » \$1.38 ea	50 » \$1.98 ea
100 » \$0.90 ea	100 » \$1.08 ea	100 » \$1.47 ea
250 » \$0.78 ea	250 » \$0.96 ea	250 » \$1.20 ea
500 » \$0.69 ea	500 » \$0.87 ea	500 » \$0.99 ea
1000 » \$0.66 ea	1000 » \$0.84 ea	1000 » \$0.96 ea
2500 » \$0.65 ea	2500 » \$0.83 ea	2500 » \$0.94 ea
5000 » \$0.52 ea	5000 » \$0.64 ea	5000 » \$0.72 ea



100# GLOSS TEXT  
FULL COLOR  
SADDLE STITCHED STAPLED

1-1000 IH  
1000+40

Includes up to 1/2 hour  
file assistance and  
(1) physical proof.

Showcase your  
offerings on  
**FULL COLOR**  
Glossy Pages



# CUSTOM Calendar

for any Great Cause!

SUNDAY MONDAY TUESDAY WEDNESDAY THURSDAY FRIDAY SATURDAY

1 2 3 4 5 6

7 8 9 10 11 12 13

14 15 16 17 18 19 20

21 22 23 24 25 26 27

28 29 30 31

01 JANUARY 2021

Great for **Gifts, Fundraisers, and Promotions.**  
For School, Home or Business.

- » Setup only costs \$40!
- » Saddle-Stitch, or add Spiral-Bound at \$.25 extra.
- » Custom highlighted event dates.
- » Add an extended footer to promote your organization or business all-year!

8.5 x 11 Calendar
50 » \$3.75 ea
100 » \$3.25 ea
200 » \$2.75 ea
300 » \$2.60 ea
400 » \$2.55 ea
500 » \$2.05 ea
1000 » \$2.00 ea

IH

# TRIFOLD BROCHURES

Economical	High-Gloss
25 » \$50	500 » \$220
50 » \$75	1000 » \$245
100 » \$90	2500 » \$375
250 » \$115	5000 » \$519
500 » \$155	10000 » \$934
1000 » \$215	

## CUSTOM TRI-FOLD BROCHURES

DIGITAL IH  
OFFSET 40

Includes professional graphic design, custom designed for your organization.  
8.5" x 11" flat size, folds to 8.5" x 3.66", full color, full bleed.

Setup » \$60

Includes up to 1 hour of professional graphic design, proof, and revisions.

Design and artwork provided 2 business days after quote approval. Revisions provided 1 business day after request. Normal production time (after final art approval) provided within 3 business days. Need these brochures for an event? Please let us know in advance when you need them in-hands to ensure timely delivery.







# INVITATIONS

IH

5" x 7" flat size. Includes up to half hour professional design, proof, revision, and print. Includes blank envelopes.

25 SETS » \$55	500 SETS » \$165
50 SETS » \$75	1000 SETS » \$225
100 SETS » \$95	2500 SETS » \$390
250 SETS » \$125	5000 SETS » \$715

On 80# white or natural stock.

For custom return address on envelope in black, add \$.05 ea. For custom return address and/or logo on envelope in color, add \$.09 ea. For custom addressing of envelopes from provided, formatted excel file, add \$.09 ea (\$40 min charge).

# POSTERS

12" x 18" poster, 12pt coated one side stock, full color, printing from client provided file.

1 » \$30	100 » \$75	500 » \$265
25 » \$50	250 » \$155	1000 » \$335

18" x 24" posters, matte vinyl with liner-backed adhesive or 100 lb paper stock, full color, printing from client provided file.

1 » \$30	25 » \$150	100 » \$510	500 » \$775
10 » \$70	50 » \$270	250 » \$755	1000 » \$790

24" x 36" posters, matte vinyl with liner-backed adhesive or 100 lb paper stock, full color, printing from client provided file.

1 » \$36	25 » \$255	100 » \$890	500 » \$1210
10 » \$125	50 » \$475	250 » \$1190	1000 » \$1690



Maximize  
YOUR  
MARKETING  
IMPACT,

DOOR  
-TO-  
DOOR!



## DOORHANGERS

IHTO2500

Pricing reflects up to  
1/2 hour graphic design.

### SMALL DOORHANGERS

3.5" x 8.5"

SINGLE-SIDED	DOUBLE-SIDED
250 » \$125	250 » \$135
500 » \$155	500 » \$165
1000 » \$210	1000 » \$230
2500 » \$290	2500 » \$355
5000 » \$545	5000 » \$575

### LARGE DOORHANGERS

4.25" x 11"

SINGLE-SIDED	DOUBLE-SIDED
250 » \$135	250 » \$150
500 » \$175	500 » \$185
1000 » \$245	1000 » \$265
2500 » \$405	2500 » \$425
5000 » \$665	5000 » \$710



The simple and cost-effective way  
to market locally.

Minimum Effort. Maximum Possibilities.



## EDDM POSTCARDS

All inclusive pricing!

We'll help you choose the area to target, design your piece, provide a proof, revisions if needed, print it on nice Gloss Cover, prepare post office paperwork, **POSTAGE INCLUDED**, and deliver it to a mail center – all included!

Use Every Door Direct Mail® (EDDM®) services to promote your small business in your community. If you're having a sale, opening a new location, or offering coupons, EDDM can help you send postcards, menus, and flyers to the right customers. It's simply the best tool for a grass-root proximity-based marketing campaign. For the EDDM program, we mail to ALL of a mail route at a reduced rate per piece. Pricing is based on size of piece, and approximate quantity.

IH

### 12 x 15 MONSTER CARDS

INCLUDES POSTAGE

QUANTITY	PRICE/PIECE
500	.75 ¢ ea.
1000	.69 ¢ ea.
2500	.63 ¢ ea.
5000	.61 ¢ ea.
10000	.60 ¢ ea.
25000	.59 ¢ ea.

These popular, GIANT-sized cards are the perfect choice for advertisers promoting multiple products or services. Common uses include: pizza and takeout menus, healthcare brochures, general contractor brochures, real estate flyers, and product promotional brochures.

### 8.5 x 11 SUPER-SIZED CARDS

INCLUDES POSTAGE

QUANTITY	PRICE/PIECE
500	.64 ¢ ea.
1000	.57 ¢ ea.
2500	.55 ¢ ea.
5000	.47 ¢ ea.
10000	.45 ¢ ea.
25000	.43 ¢ ea.

Our best-selling EDDM™ postcard product. These postcards fit virtually any type of promotional need. Mail these postcards for maximum visibility and deliver powerful messages directly to recipients. Printed on quality card stock for excellent results.

### 6.25 x 9 LARGE CARDS

INCLUDES POSTAGE

QUANTITY	PRICE/PIECE
500	.59 ¢ ea.
1000	.49 ¢ ea.
2500	.45 ¢ ea.
5000	.41 ¢ ea.
10000	.40 ¢ ea.
25000	.39 ¢ ea.

When you need to deliver powerful collateral, at the lowest rates possible, look no further than this product. This popular-sized option is an industry standard and provides excellent visibility.

### 4.25 x 11 TALL & SKINNY CARDS

INCLUDES POSTAGE

QUANTITY	PRICE/PIECE
500	.59 ¢ ea.
1000	.49 ¢ ea.
2500	.45 ¢ ea.
5000	.41 ¢ ea.
10000	.40 ¢ ea.
25000	.39 ¢ ea.

The most affordable Every Door Direct Mail product. This budget-friendly EDDM™ postcard is designed to keep your costs down while still delivering results in the mail. The postcard features a lengthy 11" long dimension to stand out in the mail. Printed on quality card stock for outstanding results.

# READY TO TARGET YOUR CUSTOMERS?



IH+LINK

## TARGETED POSTCARD MAILING VIA STANDARD BULK MAIL MAILING TO YOUR SPECIFIC LIST - **INCLUDES POSTAGE AND MAILING SERVICES**

All inclusive pricing! We'll design your piece, provide a proof, revisions if needed, print it on nice Gloss Cover, prepare post office paperwork, **POSTAGE INCLUDED**, and deliver to a mailing center - all included!

### LARGE POSTCARDS

Pricing includes custom design, proof, revisions, print gloss 6.25" x 9" postcards, addressing from your provided, properly formatted mail-list. **Pricing includes all USPS paperwork, and includes bulk postage.**

100 » \$1.45 ea	500 » \$1.20 ea	5000 » \$.62 ea
250 » \$1.30 ea	1000 » \$.93 ea	10000 » \$.57 ea
	2500 » \$.69 ea	

### SMALL POSTCARDS

Pricing includes custom design, proof, revisions, print gloss 4" x 6" postcards, addressing from your provided, properly formatted mail-list. **Pricing includes all USPS paperwork, and includes bulk postage.**

100 » \$1.20 ea	500 » \$.86 ea	5000 » \$.55 ea
250 » \$1.08 ea	1000 » \$.84 ea	10000 » \$.53 ea
	2500 » \$.65 ea	

## NOT MAILING THEM? HERE'S SOME NON-MAIL RATES

**PRICING DOES NOT INCLUDE MAILING SERVICES**

**PRODUCTION TIME 3 BUSINESS DAYS AFTER PROOF APPROVAL.**

### THICK GLOSSY 16 PT STOCK 4" X 6"

100 » \$85	1000 » \$125
250 » \$95	2500 » \$185
500 » \$110	5000 » \$285

### THICK GLOSSY 16 PT STOCK 5" X 7"

100 » \$115	1000 » \$175
250 » \$135	2500 » \$250
500 » \$150	5000 » \$390

### THICK GLOSSY 16 PT STOCK 8.5" X 5.5"

100 » \$125	1000 » \$205
250 » \$145	2500 » \$295
500 » \$165	5000 » \$455

### 12PT GLOSS FRONT, UNCOATED BACK 4" X 6"

100 » \$50	1000 » \$105
250 » \$65	2500 » \$165
500 » \$85	5000 » \$245

### 12PT GLOSS FRONT, UNCOATED BACK 5" X 7"

100 » \$55	1000 » \$130
250 » \$75	2500 » \$215
500 » \$105	5000 » \$410

### 12PT GLOSS FRONT, UNCOATED BACK 8.5" X 5.5"

100 » \$60	1000 » \$140
250 » \$80	2500 » \$225
500 » \$115	5000 » \$430



Need a custom quote, or a  
higher quantity? Call us at  
**270-827-5577**

- or -

Check us out **ONLINE!**  
**abbapromotions.com**

**WE SHIP NATIONWIDE!**

Need a custom quote, or a  
higher quantity? Call us at  
**270-827-5577**

- or -

Check us out **ONLINE!**  
**abbapromotions.com**

**WE SHIP NATIONWIDE!**







# ENVELOPES

**Full Color, Edge-To-Edge Printed, #9 Or #10 Envelopes, Regular Gummed Flap**  
Includes design on a 4-color process printed standard smooth 70# premium uncoated stock, printed, delivered IN 7 BUSINESS days after final proof approval.  
250 » \$145   500 » \$165   1000 » \$210   2500 » \$325   5000 » \$455

**Full Color, Simple Imprint (Not Edge-To-Edge), #9 Or #10 Envelopes, Regular Gummed Flap**  
Includes design on a 4-color process printed standard smooth 70# premium uncoated stock, printed, delivered IN 7 BUSINESS days after final proof approval.  
250 » \$75   500 » \$95   1000 » \$165   2500 » \$325   5000 » \$455

Just need simple black imprint?  
250 » \$60   500 » \$90   1000 » \$125   2500 » \$245   5000 » \$465

For windowed envelopes, add 15%. For self-sealing envelopes, add 15%.

Need to do a remittance or donation envelope for you fundraising campaign?  
Full Color Imprint on a 6-3/4th Remittance Envelope,  
with print on both outside and inside of fold/flap.  
250 » \$125   500 » \$225   1000 » \$345   2500 » \$750   5000 » \$1175

Just need simple black imprint?  
250 » \$85   500 » \$145   1000 » \$220   2500 » \$475   5000 » \$775

# LETTERHEADS

Includes design on a 4-color process printed standard smooth 70# premium uncoated stock. Setup @ \$15.

250 » \$95   500 » \$110   1000 » \$135  
2500 » \$225   5000 » \$355



# CUSTOM NOTECARDS

w/ Matching Unimprinted Envelopes

Setup- \$10

100 SETS » \$95   1000 SETS » \$275  
250 SETS » \$125   2500 SETS » \$475  
500 SETS » \$165   5000 SETS » \$790

On 80# white or natural stock. Folded size 4.25" x 5.5" Flat size 8.5" x 5.5". Cards provided flat, but scored for folding. For custom return address on envelope in black, add \$.05 ea. For custom return address and/or logo on envelope in color, add \$.09 ea. For custom addressing of envelopes from provided, formatted excel file, add \$.09 ea (\$40 min charge) Normal production 5 business days after approved proof. For 3 business days, add 10%. For 2 business days, add 20%. For 1 business day, add 35%.

*To Whom  
it May Concern...*

UNDER-2500-IH—OVER-2500-40

# Bring COLOR to Your Transactions

FULL COLOR NCR FORMS ARE HERE!

## CARBONLESS NCR FORMS

Half sheet size (8.5" x 5.5") 2-part custom carbonless forms

**WITH BLACK/WHITE PRINT**

Layout and proof included in price, up to a half hour included.

100 SETS » \$55   1000 SETS » \$125  
250 SETS » \$75   2500 SETS » \$235  
500 SETS » \$85   5000 SETS » \$375

Add a full color imprint for an additional \$.04 per set. Add sequential numbering for an additional \$.02 per set. Add book-binding in sets of 50 for an additional \$.03 per set. Add a backside imprint for an additional \$.03 per set.

Standard sheet size (8.5" x 11") 2-part custom carbonless forms

**WITH BLACK/WHITE PRINT**

Layout and proof included in price, up to a half hour included.

100 SETS » \$65   1000 SETS » \$175  
250 SETS » \$95   2500 SETS » \$350  
500 SETS » \$110   5000 SETS » \$590

Add a full color imprint for an additional \$.07 per set. Add sequential numbering for an additional \$.02 per set. Add book-binding in sets of 50 for an additional \$.04 per set. Add a backside imprint for an additional \$.05 per set.

Legal size (8.5" x 14") 2 part custom carbonless forms

**WITH BLACK/WHITE PRINT**

Layout and proof included in price, up to a half hour included.

100 SETS » \$95   1000 SETS » \$235  
250 SETS » \$125   2500 SETS » \$525  
500 SETS » \$155   5000 SETS » \$850

Add a full color imprint for an additional \$.09 per set. Add sequential numbering for an additional \$.02 per set. Add book-binding in sets of 50 for an additional \$.04 per set. Add a backside imprint for an additional \$.05 per set.



IH-UP-TO-1000   TRADE-CARB-OVER-1000



NOTEPADS

<b>8.5 x 11, 50 sheets\pad, full color</b> 100 pads » \$3.30 ea 250 pads » \$3 ea 500 pads » \$2.85 ea 1000 pads » \$2.75 ea	<b>8.5 x 11, 50 sheets\pad, black/white</b> 100 pads » \$2.25 ea 250 pads » \$2 ea 500 pads » \$1.75 ea 1000 pads » \$1.50 ea
<b>8.5 x 5.5, 50 sheets\pad, full color</b> 100 pads » \$1.75 ea 250 pads » \$1.60 ea 500 pads » \$1.50 ea 1000 pads » \$1.40 ea	<b>8.5 x 5.5, 50 sheets\pad, black/white</b> 100 pads » \$1.25 ea 250 pads » \$1.10 ea 500 pads » \$.90 ea 1000 pads » \$.85 ea
<b>8.5 x 3.66, 50 sheets\pad, full color</b> 100 pads » \$1.50 ea 250 pads » \$1.25 ea 500 pads » \$1.20 ea 1000 pads » \$1.10 ea	<b>8.5 x 3.66, 50 sheets\pad, black/white</b> 100 pads » \$1.15 ea 250 pads » \$.90 ea 500 pads » \$.75 ea 1000 pads » \$.65 ea
<b>4.25 x 5.5, 50 sheets\pad, full color</b> 100 pads » \$1 ea 250 pads » \$.85 ea 500 pads » \$.80 ea 1000 pads » \$.75 ea	<b>4.25 x 5.5, 50 sheets\pad, black/white</b> 100 pads » \$1 ea 250 pads » \$.60 ea 500 pads » \$.50 ea 1000 pads » \$.45 ea



CUSTOM FLYERS

Single Sided 8.5 x 11	Single Sided 5.5 x 8.5
50 » \$30 min	50 » \$30 min
100 » \$.45 ea	100 » \$.40 ea
250 » \$.25 ea	250 » \$.20 ea
500 » \$.15 ea	500 » \$.12 ea
1000 » \$.13 ea	1000 » \$.08 ea
2500 » \$.10 ea	2500 » \$.06 ea
5000 » \$.09 ea	5000 » \$.04 ea
Double Sided 8.5 x 11	Double Sided 8.5 x 11
50 » \$30 min	50 » \$30 min
100 » \$.50 ea	100 » \$.45 ea
250 » \$.30 ea	250 » \$.25 ea
500 » \$.19 ea	500 » \$.15 ea
1000 » \$.17 ea	1000 » \$.10 ea
2500 » \$.14 ea	2500 » \$.08 ea
5000 » \$.13 ea	5000 » \$.06 ea



BUSINESS CARDS

Including setup, print, and delivery!  
250 » \$45 • 500 » \$55 • 1000 » \$65

BUSINESS CARD MAGNETS

25 MIL THICK  
Including setup, print, and delivery!  
250 » \$.75 ea • 500 » \$.45 ea • 1000 » \$.24 ea  
2500 » \$.17 ea • 5000 » \$.15 ea

STICKERS

FULL COLOR SHEET STICKERS FOR INDOOR USE  
Economical stickers for all types of indoor use.

1"x1" or 1"x2" or 1"x3" circle, oval or rectangle	2"x2" circle or square	2"x3" rectangle or oval
100 » \$50	100 » \$50	100 » \$75
250 » \$75	250 » \$105	250 » \$125
500 » \$85	500 » \$135	500 » \$190
1000 » \$95	1000 » \$155	1000 » \$215
2000 » \$120	2000 » \$190	2500 » \$245
5000 » \$190	5000 » \$315	5000 » \$375

ROLL LABELS

ROLL LABELS FOR INDOOR USE  
On a roll, Economical stickers for all types of indoor use.

Single color, white imprint 1"x1" or 1"x2" circle, oval or rectangle	2"x3" rectangle or oval	2.5" x 2.5" circle or square
250 » \$135	250 » \$165	250 » \$165
500 » \$140	500 » \$205	500 » \$205
1000 » \$150	1000 » \$245	1000 » \$245
2000 » \$215	2500 » \$295	2500 » \$295
5000 » \$255	5000 » \$395	5000 » \$395
2"x2" circle or square	Full color imprint 1"x1" or 1"x2" circle, oval or rectangle	
250 » \$145	250 » \$165	
500 » \$155	500 » \$185	
1000 » \$165	1000 » \$205	
2000 » \$225	2500 » \$275	
5000 » \$335	5000 » \$325	

STICKERS-OUTDOOR-DECALS-IH  
ROLL-LABELS-DISCOUNT-LABELS

OUTDOOR DECALS

FULL COLOR, CUSTOM DIE CUT, UV PROTECTED OUTDOOR DECALS.  
Great for equipment identification, car decals, and more!

2" x 2" or similar 25 » \$50 50 » \$60 100 » \$75 250 » \$125 500 » \$190 1000 » \$290	3" X 5" or similar 25 » \$65 50 » \$85 100 » \$115 250 » \$205 500 » \$295	4" x 8" or similar 25 » \$75 50 » \$125 100 » \$165 250 » \$295 500 » \$475 1000 - Call for quote
2" x 3" or similar 25 » \$55 50 » \$65 100 » \$85 250 » \$145 500 » \$205 1000 » \$315	4" x 6" or similar 25 » \$75 50 » \$100 100 » \$145 250 » \$275 500 » \$390	3.5" x 11" or similar 25 » \$80 50 » \$140 100 » \$185 250 » \$315 500 » \$495 1000 - Call for quote
3" x 3" or similar 25 » \$60 50 » \$75 100 » \$95 250 » \$165 500 » \$245 1000 » \$375		

STICKERS, LABELS,  
& DECALS!





# ADVERTISE ON THE GO

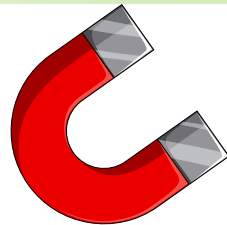


## VEHICLE MAGNETS

Pricing includes design, proof, revisions as needed, printing. Production time 3 business days after artwork proof approval. Personalized with your services and contact information, custom car magnets are an effective marketing tool. Can be used on any automobile, car, truck, van, sedan – getting your message to the public on a daily basis. Our rectangle shape auto magnets are weather-resistant, durable, flexible, and infinitely repositionable. Each of our car magnets will stay where you put it, but will also peel off when you need to remove it. Magnet material is 30 mil. magnet-backed vinyl with rounded corners.

12" x 24" size	18" x 24" size
2 » \$37 each	2 » \$45 each
4 » \$29 each	4 » \$37 each
8 » \$26 each	8 » \$31 each
10 » \$23 each	10 » \$29 each
20 » \$21 each	20 » \$27 each
40 » \$19 each	40 » \$23 each
80 » \$18 each	80 » \$22 each

WITH  
**VEHICLE  
MAGNETS**



## COLLAPSIBLE CAN COOLER

#ABBFZCC

### BEST SELLER!

One-color, two-sided screen print. \$50 covers setup and shipping!

100 » \$1 ea	300 » \$.65 ea
250 » \$.75 ea	500+ » \$.59 ea



## LOGO CUPS

#ABBALOGOCUPS

\$50 setup covers setup and shipping!

12 oz.	22 oz.
100 » \$1 ea	100 » \$1.25 ea
250 » \$.60 ea	250 » \$.85 ea
500 » \$.49 ea	500 » \$.65 ea
1000 » \$.47 ea	1000 » \$.63 ea
2500 » \$.45 ea	2500 » \$.61 ea
5100 » \$.39 ea	5100 » \$.58 ea

16 oz.	32 oz.
100 » \$1.15 ea	100 » \$1.35 ea
250 » \$.75 ea	250 » \$.90 ea
500 » \$.59 ea	500 » \$.75 ea
1000 » \$.57 ea	1000 » \$.73 ea
2000 » \$.55 ea	2500 » \$.72 ea
5100 » \$.51 ea	5100 » \$.69 ea



## COLLAPSIBLE 12 OZ. SLIM CAN COOLER

#ABBFZCC12S

Fit for tall beers, seltzer cans, and more! \$50 covers setup and shipping!

100 » \$1.49 ea
250 » \$1 ea
300 » \$.85 ea
500+ » \$.79 ea

LEPRECHAUN



- or -

- or -





STANDARD SHAPE, FULL COLOR,  
SINGLE-SIDED  
100 » \$1.75 ea   250 » \$1.05 ea   500+ » \$.75 ea

STANDARD SHAPE, FULL COLOR,  
DOUBLE-SIDED  
100 » \$2 ea   250 » \$1.15 ea   500+ » \$.85 ea

Need a custom shape? Add \$190 die setup

## NON WOVEN TOTES

#ABBATB102  
16" x 12" Nonwoven Tote Bag with 6" Gusset

Product Colors: Black, Royal Blue, Red, Kelly Green, Yellow, Orange, Navy, Natural, Purple, Pink, Forest Green

Setup & Shipping \$55

100 » \$2.25 ea   250 » \$1.75 ea   500+ » \$1.65 ea

totes



## DRINK COASTERS

#ABBACOASTERS  
FULL COLOR, DOUBLE SIDED, 4" ROUND,  
60 PT PULPBOARD, INCLUDING SETUP,  
INCLUDING DELIVERY, 3.5 WEEKS  
TURNAROUND

1200 » \$500	5000 » \$845
2500 » \$600	10,000 » \$1500

AS ABOVE, BUT RUSH FOR 2 WEEKS

1200 » \$650	5000 » \$1035
2500 » \$750	10,000 » \$1790

AS ABOVE, BUT RUSH FOR  
8 BUSINESS DAYS AFTER ORDER

1200 » \$715	5000 » \$1125
2500 » \$825	10,000 » \$1925

IH-HIT-COASTERFACTORY

## CUSTOM STANDOFF PVC PRINTS

6MM PVC PRINTS WITH STANDOFFS

12" x 12" » \$35	36" x 48" » \$115
12" x 18" » \$45	48" x 48" » \$135
18" x 18" » \$50	48" x 72" » \$165
18" x 24" » \$55	48" x 96" » \$190
24" x 24" » \$65	60" x 60" » \$245
24" x 36" » \$80	60" x 120" » \$355
36" x 36" » \$90	

If ordering multiple pieces at same time,  
please request custom discounted quote.  
For installation, add \$12 ea, min \$50 charge.

## WALL MURALS & PERFORATED WINDOW GRAPHICS

Includes layout, proof, print, and professional  
on-site installation.

20-100 sq ft » \$6/sq ft  
101-200 sq ft » \$5/sq ft  
201-300 sq ft » \$4.75/sq ft  
301-400 sq ft » \$4.50/sq ft  
500+ sq ft » \$3.90/sq ft

Add \$1.50/sq foot for concrete block walls.  
Call for a custom quote for graphics for your walls  
or windows.



## MAKE WALLS POP *with* WALLSCAPES

Fit for any size wall, window, or interior flat surface.  
We'll even install it on-site! No hassle, no worries!



# Pens

FREE SETUP & FREE SHIPPING ON  
ALL OF THESE PEN SPECIALS

## STRATUS SOLID PENS

Set a firm foundation for your advertising campaign with the Stratus Solid Pen! Choose from four barrel color options to customize the look of this medium ballpoint plastic pen. It features black ink, smooth curves and a matching colored barrel and pocket clip.

300 » \$0.55 ea    1000 » \$0.49 ea    2500 » \$0.45 ea    5000 » \$0.39 ea

## SMOOTHY CLASSIC PENS

Make an effortless play for attention at the next promotional event using this Smoothy Grip Whites pen! An industry favorite design, it features a solid white barrel, rubberized colored grip, matching trim colors and an imprint with polished chrome accents.

250 » \$0.63 ea    1000 » \$0.59 ea    2500 » \$0.56 ea    5000 » \$0.52 ea

## METEOR PENS

The Meteor plastic ballpoint pen has a slightly contoured, smooth barrel and a stylish cutout design on the rubberized grip. Black and chrome accents and trim make this eye-catching pen stand out from the rest.

250 » \$0.65 ea    1000 » \$0.59 ea    2500 » \$0.55 ea    5000 » \$0.49 ea

GOLDSTAR

## ECONOMY PENS



## MATTE TRES-CHIC - STANDARD LASER

Spruce up your advertising campaign by adding a fun splash of color with this aluminum Matte Tres-Chic pen! Our best-selling Tres Chic pen just got better with a variety of vibrant matte color choices that are paired with polished chrome accents.

100 » \$1.59 ea    500 » \$1.49 ea    1000 » \$1.45 ea    2500 » \$1.39 ea

## ELLIPSE SOFTY ROSE GOLD CLASSIC W/ STYLUS

The Ellipse Softy Rose Gold Classic is a stylish, premium pen with trendy rose gold trim, available in your choice of black or blue medium ballpoint ink. Available in a range of top-selling classic barrel colors.

100 » \$2.19 ea    500 » \$2.15 ea    1000 » \$2.09 ea    2500 » \$2.05 ea

## PHOENIX SOFTY W/ STYLUS

This modern, metal click-action pen has a slightly wider barrel than the traditional ballpoint pen. The Phoenix Softy features the popular soft-touch rubberized finish, which also coats the diamond-texture grip. Polished chrome accents, trim and clip create a sophisticated look.

100 » \$1.99 ea    500 » \$1.95 ea    1000 » \$1.89 ea    2500 » \$1.85 ea

## FULL COLOR PENS



## COLORAMA +

Add a touch of vibrant color to your marketing plan with this Colorama+ Pen! It's one of the industry's most popular pens and accented in your choice of 12 trim colors. It features our SimpliColor (TM) printing process, giving you one of the largest one to four color process imprints with virtually unlimited color choices.

250 » \$0.75 ea    1000 » \$0.69 ea    2500 » \$0.65 ea    5000 » \$0.59 ea

## COLORAMA GRIP

Brighten up your marketing campaign with the vibrant colors available with the Colorama Grip Pen. As one of the industry's most popular pens, it offers a rubber grip and bright chrome accent trim. The SimpliColor (TM) printing process offers one of the largest one to four color process imprints with virtually unlimited color options.

250 » \$0.89 ea    1000 » \$0.85 ea    2500 » \$0.79 ea    5000 » \$0.75 ea

## GRIP WRITE PENS

Cover an extended advertising area when you employ the help of the Grip Write Pen! One of the industry's highest valued wide body pens, it features our SimpliColor (TM) printing process, giving you one of the largest one to four color process imprints with virtually unlimited color options.

250 » \$1.05 ea    1000 » \$0.99 ea    2500 » \$0.97 ea    5000 » \$0.95 ea

## METAL PENS





## BREAKAWAY



## J-HOOK



## BULLDOG



## LANYARDS

Custom Lanyards, Includes Standard "Bulldog" or "J-hook" clip attachment, 3/4" width, 36" length.

### 1 COLOR IMPRINT

30 » \$4.90 ea  
50 » \$3.00 ea  
100 » \$1.85 ea  
200 » \$1.65 ea  
300 » \$1.25 ea  
500 » \$1.00 ea  
1000 » \$.79 ea

### FULL COLOR IMPRINT

30 » \$5.75 ea  
50 » \$3.50 ea  
100 » \$1.85 ea  
250 » \$1.25 ea  
500 » \$1.00 ea  
1000 » \$.79 ea

For "safety breakaway" clip (recommended), add \$.20 ea

Pricing includes layout, proof, revision if needed, debossing, imprint, setup, shipping, and standard production time of 2 weeks.

### NEED IT RUSHED?

For 1 week production after final proof approval, add \$.15 ea, \$30 min charge.  
For less than a week production after final proof approval, please call for a detailed quote.



## SILICONE BRACELETS

Silicone debossed and ink filled wristbands

100 pcs, all alike, 3 week lead time » \$180 total  
200 pcs, all alike, 3 week lead time » \$220 total  
300 pcs, all alike, 3 week lead time » \$230 total  
400 pcs, all alike, 3 week lead time » \$250 total  
500 pcs, all alike, 3 week lead time » \$280 total  
1000 pc, all alike, 3 week lead time » \$350 total  
2000 pc, all alike, 3 week lead time » \$615 total

Pricing INCLUDES everything - layout, proof, revision if needed, debossing, 1 color of imprint, setup, shipping, and standard production time.

For additional colors of imprint, add \$.10 ea

### NEED IT RUSHED?

For 2 week production after final proof approval » add \$.10 ea  
For 1 week production after final proof approval » add \$.16 ea

24HR

## METAL



## PLASTIC



## SIDEWALK SIGNS

Including hardware, signs, layout, proof, print, and production.

Metal with 2 custom landscape orientation  
18" x 24" corrugated plastic panels » \$110  
Metal, with 2 custom 24" x 36" portrait orientation  
corrugated plastic panels » \$160  
Metal, with 2 custom 24" x 36" landscape orientation  
corrugated plastic panels » \$160  
  
Plastic with 2 custom landscape orientation 18" x 24"  
corrugated plastic panels » \$120  
Plastic, with 2 custom 24" x 36" portrait orientation  
corrugated plastic panels » \$145  
Plastic, with 2 custom 24" x 24" landscape orientation  
corrugated plastic panels » \$145

IH-GRIMCO

- or -

- or -



# FATHEAD

## FULL COLOR LARGE PRINTS OF YOUR HEAD!

or someone else...



STANDARD  
22" TALL- \$25 EA.  
LARGE  
32" TALL- \$35 EA.

(Deduct 20% for 3 or more  
ordered at same time)

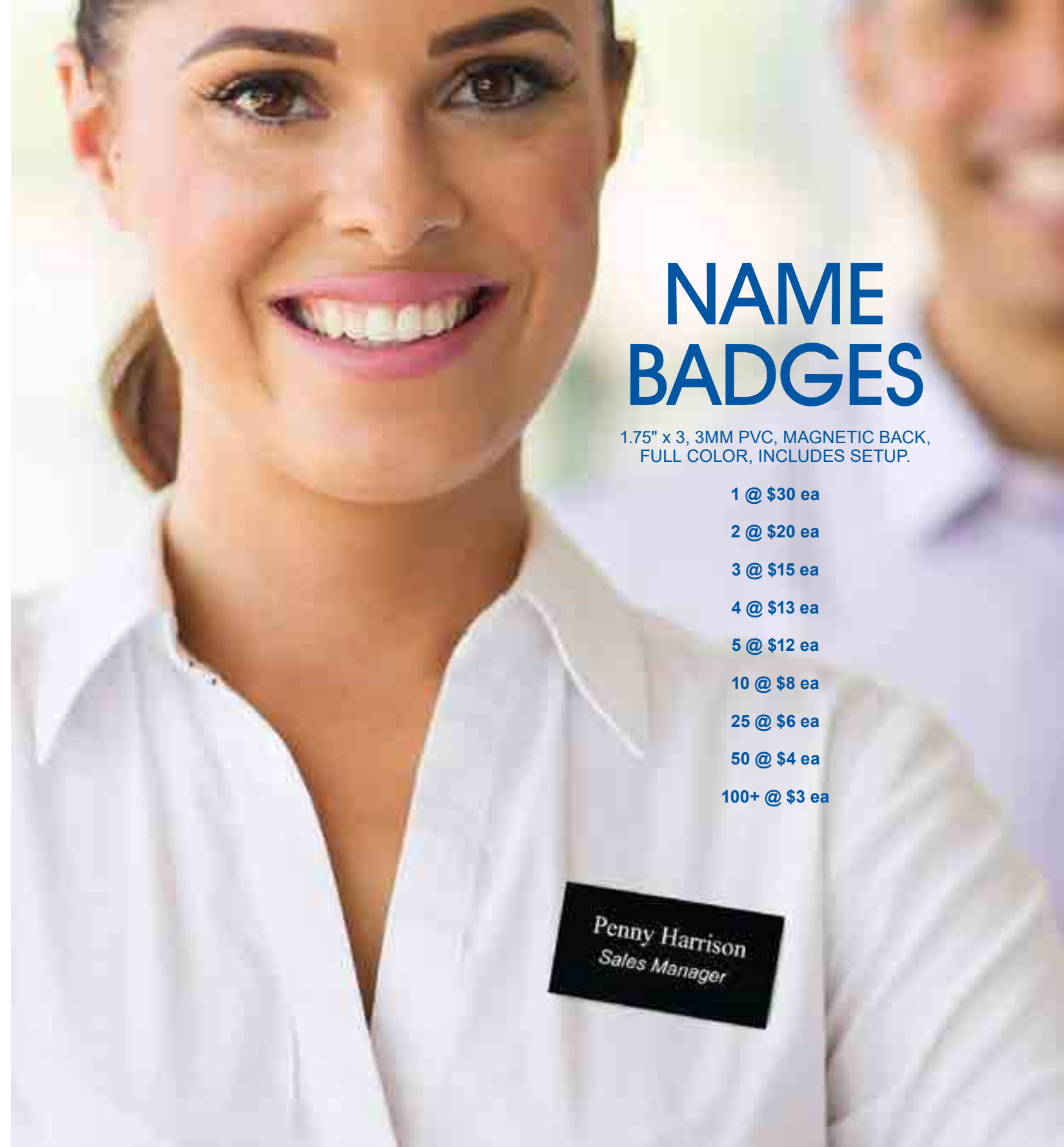
### Make Faces Turn In More Ways Than One with Big Head Cutouts

Make any celebration  
unforgettable with our big  
head cutouts. These attention-  
grabbing photo props bring fun  
and laughter to events while  
ensuring professional-grade  
quality that lasts. Perfect for  
creating viral-worthy moments  
at affordable prices.

## NAME BADGES

1.75" x 3, 3MM PVC, MAGNETIC BACK,  
FULL COLOR, INCLUDES SETUP.

1 @ \$30 ea  
2 @ \$20 ea  
3 @ \$15 ea  
4 @ \$13 ea  
5 @ \$12 ea  
10 @ \$8 ea  
25 @ \$6 ea  
50 @ \$4 ea  
100+ @ \$3 ea





# FAST CAPS

1 to 2 Weeks After Finalizing Order

12 @ \$16.90 ea      48 @ \$11.50 ea  
24 @ \$13.75 ea      96 @ \$11 ea  
144+ Call for best price quote

(Need 'em even faster? Call for quote).

PRICING INCLUDES SETUP  
INCLUDES YOUR CHOICE OF 10,000 STITCHES  
OF EMBROIDERY OR LEATHERETTE PATCH

CHOOSE FROM OUR "CLASSIC TRUCKER SNAPBACK"  
C112, "BASIC STRUCTURED" CP80, OR OUR "CLASSIC  
UNSTRUCTURED" C914

Additional styles at [www.abbapromotions.com](http://www.abbapromotions.com)

C112



CP80



C914



## OVERSEAS VALUE PRICING

3 Weeks After Finalizing Order  
Includes Setup. Includes Shipping. Includes your logo  
embroidered, up to 10,000 stitches in one location

112 STYLE 6 PANEL SNAPBACK TRUCKER CAP  
325302

100 @ \$8.50 ea      500 @ \$6.25 ea  
250 @ \$6.75 e      1000+ Call for best quote

6 PANEL LOW PROFILE UNSTRUCTURED  
COTTON TWILL BASEBALL CAP  
123227

100 @ \$6.50 ea      500 @ \$4.25 ea  
250 @ \$4.75 ea      1000+ Call for best quote

6 PANEL COTTON TWILL SANDWICH CAP  
306818

100 @ \$6.50 ea      500 @ \$4.25 ea  
250 @ \$4.75 ea      1000+ Call for best quote

**NEEDING SOMETHING  
DIFFERENT?** WE HAVE MANY  
HAT STYLES AND DECORATION  
TECHNIQUES TO CHOOSE  
FROM. CALL US TODAY FOR A  
FAST, FREE QUOTE ON YOUR  
HAT PROJECT.!



325302



123227



306818



# SCREEN PRINTED T-SHIRTS, SWEATSHIRTS, & HOODIES

Pricing includes our most common standard unisex short sleeve shirts- G2000 / G2000B, Port & Co. PC61 / PC61Y

Like 'em soft? Request Tultex 202/235 or Gildan Softstyle 64000/64000B at no addl charge!

Sizes include Short Sleeve (S/S) Adult Small, Medium, Large, and Extra Large. For 2XL or 3XL, add \$2 each.

For long sleeve shirts, available in some colors, add \$3.50 each. For crewneck sweatshirts, available in some colors, add \$5.75 each.

For hoodies, available in some colors, add \$11 each.

### S/S t-shirts 1 color front

12 @ \$12.75  
24 @ \$8.75  
48 @ \$7.75  
96 @ \$6.75  
144 @ \$6.25  
288 @ \$5.75  
576 @ \$5.50

### S/S t-shirts, 2 color front

12 @ \$15.75  
24 @ \$11  
48 @ \$8.75  
96 @ \$7.50  
144 @ \$6.75  
288 @ \$6.25  
576 @ \$5.95

### S/S t-shirts, 3 color front

12 @ \$18.75  
24 @ \$11.75  
48 @ \$9.75  
96 @ \$7.90  
144 @ \$7.75  
288 @ \$6.90  
576 @ \$6.50

### S/S t-shirts, 4 color front

12 @ \$21.75  
24 @ \$13.75  
48 @ \$11.50  
96 @ \$8.90  
144 @ \$8.50  
288 @ \$7.75  
576 @ \$7.25

### S/S t-shirts, 1 color front, 1 color back

12 @ \$16  
24 @ \$11.75  
48 @ \$9.50  
96 @ \$8.50  
144 @ \$7.50  
288 @ \$6.75  
576 @ \$6.50

### S/S t-shirts, 2 color front, 1 color back

12 @ \$18.75  
24 @ \$13.25  
48 @ \$10.90  
96 @ \$9.15  
144 @ \$8.25  
288 @ \$7.45  
576 @ \$6.90

### S/S t-shirts, 3 color front, 1 color back

12 @ \$22  
24 @ \$15.50  
48 @ \$12.75  
96 @ \$10.75  
144 @ \$8.90  
288 @ \$7.90  
576 @ \$7.50

### S/S t-shirts, 4 color front, 1 color back

12 @ \$26.75  
24 @ \$17.75  
48 @ \$13.25  
96 @ \$11.90  
144 @ \$9.75  
288 @ \$8.90  
576 @ \$8.75

### S/S t-shirts, 2 color front, 2 color back

12 @ \$22  
24 @ \$15.50  
48 @ \$12.75  
96 @ \$10.75  
144 @ \$8.90  
288 @ \$7.90  
576 @ \$7.50

### S/S t-shirts, 3 color front, 2 color back

12 @ \$26.75  
24 @ \$17.75  
48 @ \$13.25  
96 @ \$11.90  
144 @ \$9.75  
288 @ \$8.90  
576 @ \$8.50

### S/S t-shirts, 4 color front, 2 color back

12 @ \$32  
24 @ \$18.75  
48 @ \$14.90  
96 @ \$11.90  
144 @ \$10.75  
288 @ \$9.50  
576 @ \$8.75

### S/S t-shirts, 3 color front, 3 color back

12 @ \$32  
24 @ \$18.75  
48 @ \$14.90  
96 @ \$11.90  
144 @ \$10.75  
288 @ \$9.50  
576 @ \$8.75

### S/S t-shirts, 4 color front, 3 color back

12 @ \$34  
24 @ \$19.75  
48 @ \$15.90  
96 @ \$12.90  
144 @ \$11.50  
288 @ \$10.25  
576 @ \$9.25

### S/S t-shirts, 4 color front, 4 color back

12 @ \$36  
24 @ \$20.75  
48 @ \$16.75  
96 @ \$13.50  
144 @ \$11.90  
288 @ \$10.75  
576 @ \$9.75

Custom numbers in athletic film, add \$3 Ea.

Personalized names in athletic film, add \$4 Ea

Pricing assumes standard screen print colors used For non-standard colors, add \$18 ink mix charge.

**Normal turnaround time:**  
7 business days after sizes received / proof approved.

**Rush orders:**  
5 business days, 15%, \$30 min  
3 business day, 20%, \$45 min  
2 business days, 33%, \$60 min

All discounts have been applied to this pricing.

**\*For multiColor imprints  
at value pricing and low  
minimums, consider  
AbbaDabba Digital Tees!  
(see next page)**



Need a custom quote, or a  
higher quantity? Call us at  
**270-827-5577**

- or -

Check us out **ONLINE!**  
**abbapromotions.com**

**WE SHIP NATIONWIDE!**

Need a custom quote, or a  
higher quantity? Call us at  
**270-827-5577**

- or -

Check us out **ONLINE!**  
**abbapromotions.com**

**WE SHIP NATIONWIDE!**





# ABBADABBA DIGITAL

**FULL  
COLOR,  
LOW  
MINIMUMS!**

## FULL-COLOR T-SHIRTS, SWEATSHIRTS, & HOODIES

Pricing includes our most common standard unisex short sleeve shirts- G2000 / G2000B, Port & Co. PC61 / PC61Y

Like 'em soft? Request Tultex 202/235 or Gildan Softstyle 64000/64000B at no addl charge!

Sizes include Short Sleeve (S/S) Adult Small, Medium, Large, and Extra Large. For 2XL or 3XL, add \$2 each.

For long sleeve shirts, available in some colors, add \$3.50 each. For crewneck sweatshirts, available in some colors, add \$5.75 each.

For hoodies, available in some colors, add \$11 each.

### S/S t-shirts with FULL COLOR, LEFT CHEST imprint

6 @ \$18.50 ea  
12 @ \$12.50 ea  
24 @ \$9.75 ea  
48 @ \$8.75 ea  
96 @ \$7.75 ea  
144 @ \$6.75 ea  
288 @ \$6.50 ea

### S/S t-shirts with FULL COLOR LEFT CHEST and FULL COLOR BACK

6 @ \$24 ea  
12 @ \$19 ea  
24 @ \$15.75 ea  
48 @ \$14.75 ea  
96 @ \$13.75 ea  
144 @ \$12.75 ea  
288 @ \$12.50 ea

### S/S t-shirts with FULL COLOR, FULL FRONT imprint

6 @ \$22.50 ea  
12 @ \$16.50 ea  
24 @ \$13.75 ea  
48 @ \$12.75 ea  
96 @ \$11.75 ea  
144 @ \$10.75 ea  
288 @ \$10.50 ea

### S/S t-shirts with FULL COLOR FULL FRONT and FULL COLOR BACK

6 @ \$25 ea  
12 @ \$23 ea  
24 @ \$19 ea  
48 @ \$17.75 ea  
96 @ \$16.75 ea  
144 @ \$16 ea  
288 @ \$15.75 ea



**ABBA**  
PROMOTIONS  
INC.

Need a custom quote, or a  
higher quantity? Call us at  
**270-827-5577**

- or -

Check us out **ONLINE!**  
**abbapromotions.com**

**WE SHIP NATIONWIDE!**

## EMBROIDERED POLOS AND PULLOVERS

1 TIME SETUP CHARGE FOR NEW, INCLUDING SEWOUT PROOF (Doesn't apply to exact reorders) \$35.  
Includes up to 10,000 stitches in 1 location. Includes AS, AM, AL, AXL. For XXL or XXXL add \$2 ea.

### ST650 / LST650 POLOS

#### Sport-Tek® Micropique Sport-Wick® Polo

- Smooth micropique polos that wick moisture and resist snags.
- 3.8-ounce, 100% polyester tricot
- Snag resistant
- Moisture-wicking
- Double-needle stitching throughout
- Tag-free label
- Taped neck
- Flat knit collar
- 3-button placket with dyed-to-match rubber buttons
- Set-in, open hem sleeves
- Armhole accent
- Side vents

6 @ \$30 ea  
12 @ \$26 ea  
24 @ \$24 ea  
48 @ \$22 ea  
96 @ \$21.50 ea

AbbaDabba Digital  
Full Color Print  
Setup is FREE!

6 @ \$27.50  
12 @ \$23  
24 @ \$20  
48 @ \$18.75  
96 @ \$18.50



### K110 / LK110 POLOS

#### Port Authority® Dry Zone® UV Micro-Mesh Polo

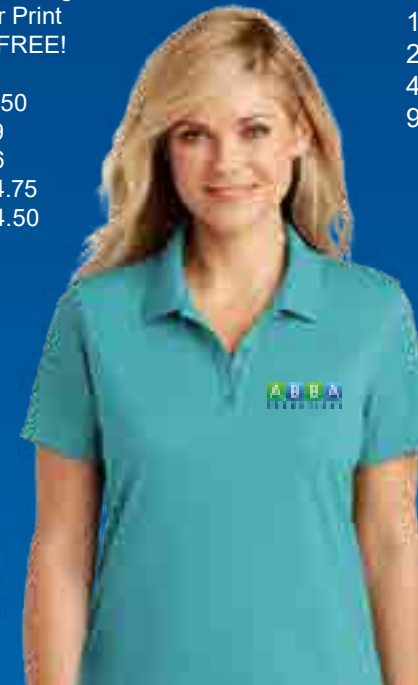
Embroidered is \$30 setup. Our durable, moisture-wicking Dry Zone polo—now with UV protection. An exceptional value, this breathable mesh polo also resists snags. Colors coordinate with our Core Classic Pique Polos and Carefree Poplin Shirts.

- 4.6-ounce, 100% polyester double knit pique
- UPF rating of 30
- Tag-free label
- Flat knit collar
- 3-button placket
- Pearlized, dyed-to-match buttons
- Open hem sleeves
- Side vents

6 @ \$26 ea  
12 @ \$22 ea  
24 @ \$20 ea  
48 @ \$18 ea  
96 @ \$17.50 ea

AbbaDabba Digital  
Full Color Print  
Setup is FREE!

6 @ \$23.50  
12 @ \$19  
24 @ \$16  
48 @ \$14.75  
96 @ \$14.50



### ST850/LST850 1/4 ZIP PULLOVERS

#### Sport-Tek® Sport-Wick® Stretch 1/4-Zip Pullover

Embroidered is \$30 setup. An extremely flexible layer with a soft-brushed backing and moisture control for year-round comfort.

- 6.8-ounce, 90/10 poly/spandex jersey
- Tag-free label
- Smooth-faced
- Chin guard for additional comfort
- Cadet collar
- Taped neck
- Raglan sleeves
- Open cuffs and hem

6 @ \$39 ea  
12 @ \$36.50 ea  
24 @ \$33.50 ea  
48 @ \$32.75 ea  
96 @ \$31.75 ea

AbbaDabba Digital  
Full Color Print  
Setup is FREE!

6 @ \$38 ea  
12 @ \$31 ea  
24 @ \$27.75 ea  
48 @ \$27 ea  
96 @ \$26 ea



**ABBA**  
PROMOTIONS  
INC.

Need a custom quote, or a  
higher quantity? Call us at  
**270-827-5577**

- or -

Check us out **ONLINE!**  
**abbapromotions.com**

**WE SHIP NATIONWIDE!**

Pricing subject to change. If we can help, please contact us at 270.827.5577 or email us at info@abbapromotions.com. CATALOG VER. APRIL 2025



### WHAT'S A "WRAP"?

A vinyl wrap is an adhesive, "second skin" applied to your vehicle. It's a great way to renew or customize the look of your vehicle without painting it. It's an incredible way to display an eye-catching advertising message that would be many times more expensive if applied with paint.

### WHY GET A WRAP?

Great advertising is one of many reasons a car wrap makes sense. A vinyl wrap also protects the paint, which helps maintain resale value.

### HOW WELL CAN IT ADVERTISE MY BUSINESS?

According to the Outdoor Advertising Association, vehicle wraps can produce 30,000 to 70,000 impressions a day, making it an effective branding and marketing tool. A vinyl wrap is a moving billboard that grabs attention. As you drive to meetings, sit at traffic lights, and park in front of your home and work place.

### HOW DO WRAPS COMPARE TO OTHER ADVERTISING?

In short, pretty darn well. On average, wrap advertising costs as little as **four cents per thousand impressions**. This is significantly lower than other forms of advertising. For instance, it's estimated that outdoor signs cost \$3.56 and newspaper ads cost \$19.70 per thousand impressions.

### THE STATS:

- » 98% of in-car audiences indicated they noticed wraps.
- » Individual vehicle advertising generates between **30,000 to 70,000** daily vehicle impressions.
- » 30% of mobile outdoor viewers base buying decisions on ads they see.
- » 96% of Americans travel in a vehicle each as either a driver or a passenger in the past week.
- » Mobile advertising is the most effective and efficient form of outdoor advertising.
- » Mobile flexibility allows you to position your vehicle ad anywhere you want.
- » Every traffic jam is a terrific marketing opportunity.
- » Mobile advertising media reaches consumers not exposed to newspaper, radio and television.
- » Unlike home mailers – your advertisements are not compared side-by-side to your competitors.
- » Reach audiences of all ages, gender, backgrounds, income, professionals, and families.
- » Wraps are significantly cheaper per impression than other forms of advertising, approximately four cents per thousand impressions.



# WRAP UP YOUR MARKET!

## WITH A FULL COLOR VINYL WRAP!



# A WRAP FOR EVERY BUDGET



Creative Solutions. Impressive Results.

GRAPHIC DESIGN - PRINTING  
MARKETING - BRANDING  
CUSTOM APPAREL - PROMO ITEMS  
TRADESHOWS - SIGNAGE

[www.abbapromotions.com](http://www.abbapromotions.com)

270-827-5577



**Logos and lettering on compact to midsize car**  
Logos and lettering on both side doors: \$150  
Perforated on rear window: \$200  
Artwork and design cost: \$50



**Partial wrap on compact to midsize car 1/2 to 2/3 of the car**  
+ Perforated on rear window: \$1500  
Artwork and design cost: \$200



**Full wrap on compact to midsize car**  
Complete coverage - largest impact  
+ Perforated on rear window: \$2700  
Artwork and design cost: \$400



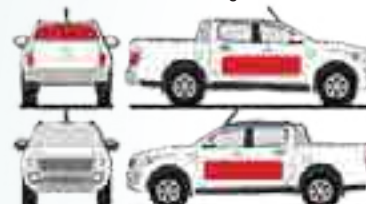
**Logos and lettering on large car or SUV**  
Logos and lettering on both side doors: \$250  
Perforated on rear window: \$200  
Artwork and design cost: \$50



**Partial wrap on large car or SUV 1/2 to 2/3 of the car**  
+ Perforated on rear window: \$1750  
Artwork and design cost: \$200



**Full wrap on large car or SUV**  
Complete coverage - largest impact  
+ Perforated on rear window: \$3000  
Artwork and design cost: \$400



**Logos and lettering on pickup**  
Logos and lettering on both side doors: \$250  
Perforated on rear window: \$200  
Artwork and design cost: \$50



**Partial wrap on pickup 1/2 to 2/3 of the truck**  
+ Perforated on rear window: \$1750  
Artwork and design cost: \$200



**Full wrap on pickup**  
Complete coverage - largest impact  
+ Perforated on rear window: \$3000  
Artwork and design cost: \$400



**Logos and lettering on small van**  
Logos and lettering on both sides: \$350  
Perforated on rear window: \$200  
Artwork and design cost: \$50



**Partial wrap on small van 1/2 to 2/3 of the van**  
+ Perforated on rear window: \$2000  
Artwork and design cost: \$200



**Full wrap on small van**  
Complete coverage - largest impact  
+ Perforated on rear window: \$3000  
Artwork and design cost: \$400



**Logos and lettering on large van**  
Logos and lettering on both sides: \$450  
Perforated on rear window: \$200  
Artwork and design cost: \$50



**Partial wrap on large van 1/2 to 2/3 of the van**  
+ Perforated on rear window: \$2300  
Artwork and design cost: \$200



**Full wrap on large van**  
Complete coverage - largest impact  
+ Perforated on rear window: \$3500  
Artwork and design cost: \$400



# CUSTOM PACKAGE DEALS

# TAKE ADVANTAGE OF OUR BUNDLE DEALS!

IF YOU'RE GETTING A LOGO, CONSIDER ONE OF THESE BUNDLES TO SAVE TIME AND MONEY:

STARTING A BUSINESS? OR, HOPING TO QUICKLY GET A NEW PROMOTION IN MOTION? CHECK THESE OUT!

## PACKAGE A1

### INCLUDES: CUSTOM LOGO DESIGN PACKAGE

Set of 1000 Business Cards and choice of banner, letterhead/envelopes or scratchpads.  
6 T-shirts with 2 locations imprint  
500 Trifold Brochures  
5 Custom Yard Signs  
\$750 if bought separately

**PACKAGE PRICE » \$590**

## PACKAGE A2

### INCLUDES: CUSTOM LOGO DESIGN PACKAGE

Set of 1000 Business Cards and choice of banner, letterhead/envelopes or scratchpads.  
12 T-shirts with 2 locations imprint  
1000 Trifold Brochures  
10 Custom Yard Signs  
\$900 if bought separately

**PACKAGE PRICE » \$750**

## PACKAGE A3

### INCLUDES: CUSTOM LOGO DESIGN PACKAGE

Set of 1000 Business Cards and choice of banner, letterhead/envelopes or scratchpads.  
24 T-shirts with 2 locations imprint  
1000 Trifold Brochures  
20 Custom Yard Signs  
\$1100 if bought separately

**PACKAGE PRICE » \$950**

## PACKAGE B1

6 T-shirts with 2 locations imprint  
500 Trifold Brochures  
5 Custom Yard Signs  
\$500 if bought separately

**PACKAGE PRICE » \$425**

## PACKAGE B2

12 T-shirts with 2 locations imprint  
1000 Trifold Brochures  
10 Custom Yard Signs  
\$625 if bought separately

**PACKAGE PRICE » \$525**

## PACKAGE B3

24 T-shirts with 2 locations imprint  
1000 Trifold Brochures  
20 Custom Yard Signs  
\$825 if bought separately

**PACKAGE PRICE » \$750**

## PACKAGE B4

INCLUDES:  
24 T-shirts with 2 locations imprint  
1000 Trifold Brochures  
500 Doorhangers  
500 Stratus Pens  
20 Custom Yard Signs  
\$1275 if bought separately

**PACKAGE PRICE » \$1125**

## PACKAGE A4

### INCLUDES: CUSTOM LOGO DESIGN PACKAGE

Set of 1000 Business Cards and choice of banner, letterhead/envelopes or scratchpads.  
24 T-shirts with 2 locations imprint  
1000 Trifold Brochures  
500 Doorhangers  
500 Stratus Pens  
20 Custom Yard Signs  
\$1550 if bought separately

**PACKAGE PRICE » \$1290**





# Custom Logo Package

Get control of your image today by purchasing a logo package from ABBA PROMOTIONS! Ready to get started? All that's required is a \$75 deposit, and a few minutes of your time. Give us a ring at 270.827.5577.

Owning and controlling your own graphic files properly is the first and most critical step to consistent identity for your business. Buying a logo package gives you the proper tools and ability to recreate your logo **ACCURATELY** and **CONSISTENTLY** across a variety of marketing tools.

Owning and controlling your own graphic files is the **ONLY** way to ensure this **CONSISTENCY** and **ACCURACY** of your corporate image!

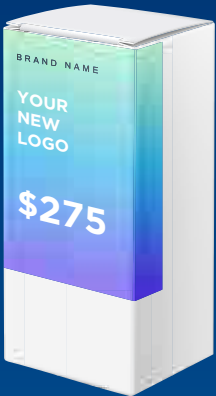
For \$275, your logo package will include:

- 3 unique concept choices for you to select from, each concept produced by a different designer.
- Initial logo design choices are delivered to you within 4 business days.
- Unlimited revisions to your design choice until you are 100% satisfied.
- 100% "Money Back Guarantee" (minus nonrefundable deposit) right up to your acceptance of the final design.
- Editable source file in vector format.
- No clip art – Your design is unique.
- Communication with you at each stage of the design process.
- Free support and communication with your print shop of choice, if required.
- Free grayscale version of your new logo supplied as standard to allow you to apply for trademark status.
- Pantone color references for your logo, just like Fortune 500 companies.
- Designed in either one, two, three, or full color for no extra charge.
- Files prepared in the following formats: .AI, .EPS, .PDF, .JPG, .PNG.

Your logo will be professionally designed so that it is easily manipulated and used for virtually **ANY** type of printing, web, or marketing purpose.

Order a logo package and mention this catalog to receive **1000 full color business cards PLUS Your choice of:**

**ONE 3' x 5' custom banner,**  
**ONE HUNDRED custom scratchpads, OR**  
**TWO HUNDRED letterheads with envelopes!**



You can't operate as a growing business without managing your branding strategy...

A branding strategy guide is like the secret sauce that gives your business its unique flavor, making it irresistible in a crowded market. Imagine having a playbook that ensures your brand is always on point, whether it's in your logo, social media posts, or the way your team talks to customers. That's the power of a branding strategy guide – it keeps everything consistent, building recognition and trust every time someone interacts with your brand.

In a sea of competitors, a strong branding strategy guide is your lifeboat. It helps you carve out your own space by highlighting what makes your brand unique, ensuring you stand out for all the right reasons. Plus, it's flexible enough to adapt to changes while keeping your core identity intact.

A branding strategy guide is the roadmap to brand greatness, driving consistency, team alignment, clear communication, and that all-important competitive edge. It's not just important – it's essential for any business looking to make its mark and keep customers coming back for more.

## WE OFFER BRANDING PACKAGES IN 3 TIERS

**TIER 1 -** A single page indicating the basics of your logo usage and font choices. These include references to your logo color, sizing limitations, and different typefaces to use among all your branding material.

**\$100**

**TIER 2 -** An 8 to 12 page booklet that references the importance of a brand, logo specs, a "how-not-to-use" section explaining what not to do with your logo, sizing limitations of your logo, color specifications, typography options and guide, and preferred photos/backgrounds/textures to use.

**\$250**

**TIER 3 -** Fully customized 20+ page book in a stylized size (8" x 8" or something similar) with an all-encapsulating presentation of company facts/history/mission statement/etc. To be provided to the client with a base package of 20 printed books (with more upon request) along with a packaged digital file containing the book, logos with varying formats, and a release indicating that client retains all copyright on the logo. Branding guide will, at minimum, contain the following info: introductory statement, history/facts about company, logo presentation, logo standards, color, typography, grammar & writing style, backgrounds & textures, sample verbiage/signatures/stationary, press kit, and copyright info. This package receives the most amount of attention, crafted to your satisfaction.

**\$500+**



Need a custom quote, or a higher quantity? Call us at 270-827-5577

- or -  
Check us out ONLINE!  
abbapromotions.com

WE SHIP NATIONWIDE!

Need a custom quote, or a higher quantity? Call us at 270-827-5577

- or -  
Check us out ONLINE!  
abbapromotions.com

WE SHIP NATIONWIDE!

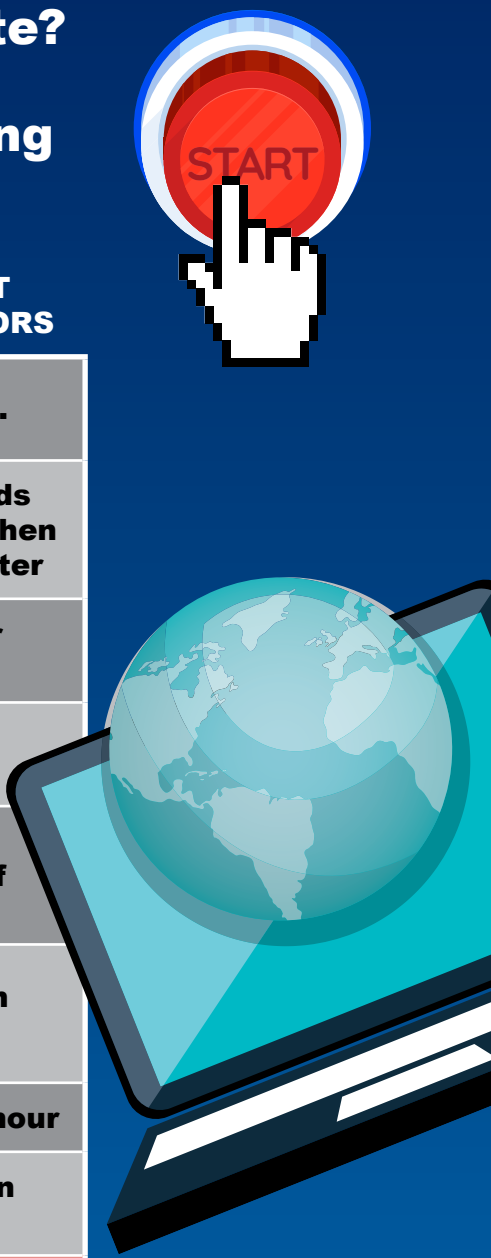




# Website Creation & Hosting

Thinking about investing in a new website?  
We offer the most bang for your buck.  
See how our affordable web design pricing stacks up against the competition:

PRICE COMPARISON	ABBA PROMOTIONS	AVERAGE COST FROM COMPETITORS
How much to get started?	\$480	\$3000+ Easily...
How much per year?	\$42 per month	Several thousands for the first year, then hundreds thereafter
Web hosting?	Included	+\$150 per year (approx.)
SSL Certificate	Included	+149 per year (approx.)
Mobile Responsive?	Yes.	Additional THOUSANDS of dollars extra
Ongoing updates	Easily make updates yourself, or we can do it for you.	\$75 per hour on average
SEO?	Included	\$100 to \$300 per hour
Timeframe to it online?	GO LIVE IN AS LITTLE AS ONE WEEK!	60 to 90 days on average
The bottom line...	Affordable pricing, must-have features, reliable support and a fast and easy setup process	Thousands of dollars upfront, hundreds of dollars a month, pay for updates, and months to build.



**SORRY, HERE ARE SOME ITEMS WE DO NOT OFFER:**

- » Quick print copies
- » Rubber stamps
- » Transactional printing
- » Clothing orders less than 12 pieces
- » Mailings of less than 500 pieces
- » Architectural or illuminated signage over 14'

**MINIMUMS**

Clothing orders: 6 pieces of same garment item number and color  
Graphic design, paper printing, decals, banners, signage: \$30 min  
Promotional products: \$250

**SAMPLES**

Some samples, we usually provide at no charge. Clothing samples shipped in are invoiced at catalog rate. These clothing samples are 100% refundable with return of samples within 2 weeks or less.

**PROOFS**

Be sure to check your proof very carefully for spelling, phone numbers, addresses and all other content. Please click "Accept" only if the info on the quote and the proof is correct. We want to get your project completed correctly. If you approve your proof and quote, and it's wrong, we will most likely print it wrong! **Please understand we can't be responsible for errors which you approve.**

**PRODUCTION TIME**

Please note that production will not begin until we receive final proof approval and all information needed. Exceptions do apply. If you have a firm date you need your purchase in-hands, please let us know at the beginning of your project so that we may accommodate.

For paper printing, banners, and signs, please allow 5 business days.  
For custom apparel, please allow 7 business days.  
For most domestic promotional products orders, please allow 2 calendar weeks.  
For most overseas promotional products orders, please allow 4 calendar weeks.

**RUSH, if available**

- 5 business days, 15%, \$25 min
- 3 business days, 20%, \$35 min
- 2 business days, 33%, \$50 min

**TERMS**

50% deposit for new clients or larger projects made at our discretion. All major credit cards are accepted. For invoices over \$1000, an additional 2% charge will apply for credit card payment.

**HAVE AN EVENT DATE?**

Please let us know and ask for a written "Event Date Guarantee".



Need a custom quote, or a higher quantity? Call us at 270-827-5577

- or -  
Check us out ONLINE!  
abbapromotions.com

WE SHIP NATIONWIDE!

Need a custom quote, or a higher quantity? Call us at 270-827-5577

- or -  
Check us out ONLINE!  
abbapromotions.com

WE SHIP NATIONWIDE!







## See What Others Have Said About Our Work!

*"I really can't say enough about Abba Promotions and their entire team! They really brought my visions to life. We were able to turn a simple shirt order into a major fundraiser for our team! Thank you so much for being a great asset and promoter of our community."*

**Karrie - Track Team Volunteer**

*"For over 12 years Ty and his staff at Abba Promotions have been helping us with design, selection, ordering, and prompt delivery. We've ordered client gifts, stationary, color brochures, and branded clothing. Nothing but the best everytime."*

**Jason P Perry, Owner/President - A-1 Tax Service Inc.**

*"I could not do my job without Ty Rideout and the folks at Abba Promotions. They help me with a variety of projects for my retail business every year, and even manage up to 6 jobs of mine simultaneously. Big, small, complicated, or simple I feel like each job is THE most important one that Abba is working on. Sometimes I feel as if I must be their one and only customer because Ty, Amber, and Zach respond to my emails, texts and phone calls often within minutes, but always before the close of business. I can't count the 5:30 am, 11:30pm, and weekend emails from Ty responding to a question or following up in some way. Beyond first class customer service, I can rely on their accuracy and all orders are filled on or before their quoted delivery date. Because they are so reliable, I can be a more productive business manager."*

**Courtney Givens**

*"Many times we have multiple projects running on a very tight timeframe. You and your team are always creative with the designs and pull off what may seem like an impossible deadline... even with a smile!"*

**Kim Humphrey, Director of Employee and Community Programs  
River View Coal - Alliance Coal**

*"I have used ABBA Promotions for the last three years for customized t-shirts for an event I host. Ty, Allan, Amber, and their team are a pleasure to work with. They provide excellent communication through the ordering process. My order is always processed correctly and in a very timely manor. Everyone at the event is always happy with the shirts/quality from year to year. I highly recommend ABBA Promotions for your t-shirts or printing needs!"*

**Angel Hogan**

*Abba Promotions is an awesome company to work with. Great quality and prices. Speedy turn around times and professional, creative staff. Highly recommend."*

**Kim Clark**

*"Ty & the whole team at Abba Promotions have been incredible to our non-profit organization. Super friendly and knowledgeable on what would be the best fit for what we are trying to create. Efficient and timely with our printing projects. From brochures to banners to our promotional calendars! They have really helped us with our promotional needs. We are thankful for a local company that has such great people and great service!"*

**Brooke Ciprian**

*"The Abba team is fantastic! They are professional, quick, and I've been happy with every project they have done for our business. They are patient with revisions and I would recommend them to anybody!"*

**Kate Faupel Grealish**

*"We love Abba Promotions! They are super professional, super helpful and SO very supportive of the local nonprofits in the community. Thank you Abba!"*

**Healing Reins of Kentucky**

*"Abba is a top notch company that our organization does a lot of business with. Ty, Allan and the entire team at Abba are great to work with. You can always count on efficient service, great ideas and superb products when doing business with them. There have been many times we have bombarded them with a last minute printing need and they always do their best to accommodate us. Abba is also highly involved in many community organizations and are supportive of multiple non-profits. I cannot recommend this business enough! We love everything about Abba!"*

**Rachel Trout**