

SUMMER / FALL 2021

# Discover

# Paris

& Surrounding Areas

**Dining**

**Shopping**

**Entertainment**

[www.DiscoverParisTexas.com](http://www.DiscoverParisTexas.com)

# CLAYTON HOMES



**We Build Homes. We Build People. We Build Futures.**  
[Careers.ClaytonHomes.com](https://careers.claytonhomes.com)

Clayton Homes Bonham  
26 Years Strong  
Bonham, TX  
Over 200 Team Members

Clayton Homes has been a proud employer of Fannin County for over 26 years. We love this community.

Our vision is to be a partner, participant, and supporter of our neighbors.

As the 3rd largest employer of Fannin County, it's our mission to care for our team members and their families. We employ over 200 people and are hiring more right now. Join our family!





**INCLUDES THE LARGEST PIZZA BUFFET & SALAD BAR IN TOWN!**

**ADULT BUFFET \$8.99**  
**KIDS BUFFET \$4.99** *Plus Drink!*

10 & Under - 3 & Under Free

**GAMES** 4 Tokens for \$1  
 24 Tokens for \$5

• 3610 N. Main • 903-783-1094 • Paris, TX • TUES-THURS 11-8 • FRI-SAT 11-9 • SUN 11-5 •

**TUESDAY-FRIDAY**  
**11am-2pm**  
**FREE SOFT DRINK**  
 With Purchase of Adult Buffet

**\$8.99**

**Weekly  
 Specials**

**EVERYDAY TAKE-OUT  
 VALUE**

**2 for  
 \$19.99  
 14" PIZZA**  
 UNLIMITED TOPPINGS

**Wednesday  
 4pm-8pm**

**KIDS EAT  
 FREE**

With Purchase of Adult Buffet



**Tyler's Pizzeria Take-out**

14" PIZZA	7" PIZZA	CHICAGO STYLE DEEP DISH	14" CALZONE
Unlimited Toppings	Unlimited Toppings	Includes 2 Toppings	Unlimited Toppings
12.99	7.99	14.99	9.99

**Sauces:**  
 Traditional  
 Zesty Sauce  
 Beer Cheese

**Meats:**  
 Pepperoni  
 Italian Sausage  
 Beef

**Garlic Chicken**  
**Canadian Bacon**  
**Bacon**

**Vegetables:**  
 Black Olives  
 Green Olives  
 Green Bell Pepper  
 Red Bell Pepper  
 Jalapenos

**Mushrooms**  
**Pineapple**  
**Spinach**  
**Red Onions**  
**Banana Peppers**

**KID'S HOME PACK**  
 6oz Dough Ball,  
 Sauce, Cheese, 2  
 Toppings  
**6.49**

**2-14" PIZZAS  
 FOR \$19.99**

**NEW! UNLIMITED  
 TOPPINGS  
 CRUSTLESS  
 PIZZA 8.99**

**Desserts**

12" BANANIAN CREAM PIZZA	9.99
12" CHOCOLATE CHIP PIZZA	9.99
12" CHERRY STRUDEL PIZZA	9.99
MINI CINNAMON ROLLS	(6) For \$2.99 (12) For \$4.99
MINI APPLE STRUDEL CINNAMON ROLLS	(6) For \$2.99 (12) For \$4.99
MINI BROWNIES	(6) For \$2.99 (12) For \$4.99

10" Gluten-Free Crust or 10" Cauliflower Crust for 12.99

**Chicken Wings**

Mild • BBQ • Lemon Pepper • Garlic Parmesan

**Bone-in or Boneless**

6 CT	5.99
12 CT	11.99
24 CT	22.99

**Specialties**

7" ZESTY CHEESE PIZZA	5.49
7" ZESTY CHEESE PIZZA W/ BACON	6.49
GARLIC KNOTS(6)	5.49
GARLIC KNOTS(12)	10.99
PEPPERONI STROMBOLI	12.99

**Pasta**

80Z PENNE W/ SPAGHETTI SAUCE	3.99
80Z PENNE W/ ALFREDO SAUCE	3.49

**Salad**

80Z GARDEN SALAD	2.99
240Z BUILD YOUR OWN SALAD	3.99
Add Chicken \$1.49	
240Z FAMILY GARDEN SALAD	6.99

**ADD TO YOUR BUFFET**  
**CHICKEN WINGS .75**  
 BONE-IN OR BONELESS EACH

**14" Specialty Pizzas**

\$13.99 or 2 for \$24.99

Beer Cheese Chicken • Bacon  
 Pickle Pizza • Buffalo Chicken  
 The Philly • Zesty Chicken Bacon  
 Spinach • Enchilada Pizza  
 Bacon Cheeseburger Pizza

**14" Deluxe Pizzas**

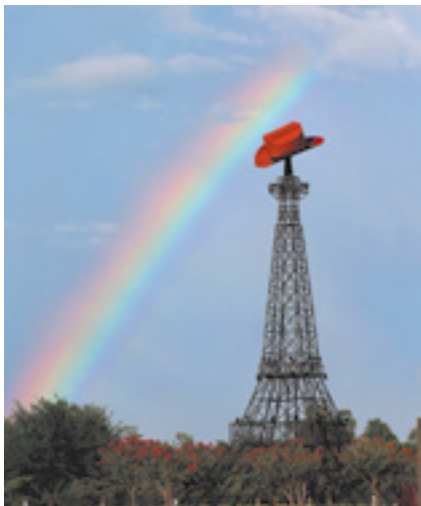
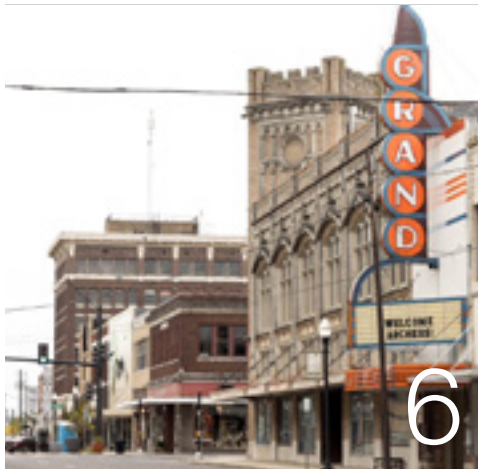
\$15.99 or 2 for \$29.99

Mac & Cheese Pizza • Taco Pizza  
 The TED • The Big Hoss  
 The Big Bird (Chicken Bacon)  
 The Whole Enchilada

**MAKE STUFFED FOR \$4 MORE!**

# Table of Contents

- 4 Lamar County
- 6-7 Paris
- 8 Historic Downtown Paris
- 10 Reno
- 14 Fannin County
- 15 Honey Grove
- 16 Bonham
- 17 Red River County
- 17 Clarksville
- 18 Hopkins County
- 18 Sulphur Springs
- 19-20 Attractions
- 21-22 Farmers & Artisan Market



Cover photo by local photographer  
Tony Corso

## Discover Paris

& Surrounding Areas

### WRITER

Krista Wadsworth

### ADVERTISING

Lorrie Page

### DESIGN

Linda Garrison

### DISTRIBUTION MANAGER

Brian Edwards

For more information on how you  
can advertise in our next issue of  
*Discover Paris*, please call  
us at 903-784-3328.

A publication of  
**The Shopper**  
101 Lamar Avenue  
Paris, Texas 75460  
© 2021 VanZandt Newspapers, LLC.



[www.DiscoverParisTexas.com](http://www.DiscoverParisTexas.com)

# History Of LAMAR COUNTY

Once depending solely on its thriving agriculture land, Lamar County traces its roots back the early 1800s when farming dominated the landscape. Originally part of Red River County, as more growth came to the area, Lamar County was established in 1840, according to the Texas State Historical Association. In 1870, the county boundaries shrunk when Delta County was established. In 1844 Paris was established as the county seat.

Major transportation arteries including a major roadway and railways developed in the later part of the 1800s kept the Lamar County population growing until the early 1900s followed by several years of decline through the 1950s before it began another period of growth, according the TSHA. The county and Paris as its county seat has proved its resiliency several times throughout its history by recovering from major

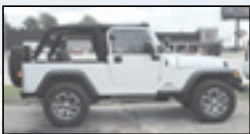


*Photo courtesy Lamar County Chamber of Commerce*

downtown fires in 1877 and 1916, and most recently a tornado in 1982.

Today, the county encompasses 919 square miles and is home to nearly 50,000 people, according to 2019 U.S. Census Bureau estimates. Paris is by far its biggest city, with close to 25,000 people. Blossom, Deport, Reno and Roxton make up Lamar County's other most populous cities.

## Coming Soon...**NEW LOCATION**...Gene's Old Flea Market!



## **MORRELL AUTO GROUP**

2845 N.E. LOOP 286 • PARIS, TEXAS (Next Door to TaMolly's!)

**800-569-3647 | 903-785-7556 | MORRELLAUTOGROUP.COM**

# Welcome to PARIS!

People come from all over the state, country and world to visit the city that boasts an Eiffel Tower with a red cowboy hat perched on top. And while the name and tower might be a major attraction, visitors and residents alike find the city has much more to offer.

A thriving small business community, a plethora of communitywide activities and festivals, lakes and trails, a revitalized downtown, educational opportunities, industry and more are what keep people visiting and staying in Paris.

Since it was formally named in 1846, Paris has seen its share of ups and downs and hardships. Appreciation for city history is shown by continuing longtime traditions like the Paris Municipal Band, preserving architectural mainstays like the Sam Bell Maxey House and Paris Union Station, and by dedication to operating museums that teach about the area's past. However, it is also the time and effort put in by local officials, businesses and volunteers that have contributed to a bustling community and healthy tourism industry.

"We have been very busy with out-of-town guests since April," said Director of Tourism Becky Semple. "Events are coming back having great attendance. We are also adding new events this year and people are coming to Paris because it is Paris. Paris, Texas – It's always a good idea."

All in Paris, one can find walking, hiking and biking trails, parks, boating and fishing opportunities, visit sites like the Red River Valley Veterans Memorial and the "Jesus in Cowboy boots" cemetery monument. There is a farmer's market that operates from May-October every year, and annual events such as a Fourth of July celebration and the Red River Valley Fair are looked forward to with anticipation.

On the tourism front, Paris has become known for large events such as the Tour de Paris bicycle rally, Archery Shooters Association Southwest Shootout Archery Tournament and Paris Balloon and Music Festival that bring in large numbers of visitors every year. Add in car shows, holiday festivals and even a square dancing competition, and visitors and residents alike can find something they are interested in.

Historically the center of commerce for the whole Lamar County area, downtown Paris has seen a revival in recent years and has once again become a draw for visitors looking to shop, eat or visit the historic Culbertson Fountain. The downtown area is also home to events during the holidays, such as the Festival of Pumpkins, Christmas tree lighting and many other community activities.





Photo courtesy Tony Corso



Photo courtesy Tony Corso



Photo courtesy Tony Corso



Photo courtesy Lamar County Chamber of Commerce



Photo courtesy Lamar County Chamber of Commerce



# WITH ZERO-TURN BALING.



THE ZR5-1200 SELF-PROPELLED BALER IS  
**CHANGING THE WAY** WE MAKE HAY.

**W&H Farm and Ranch Equipment**  
11561 US Highway 82 W  
Brookston, TX 75421  
(903) 715-2556



# Historic Downtown Paris, Texas

PARIS DOWNTOWN



ASSOCIATION

*Paris' downtown features amazing shops to fit every need.*

## Remember When

SINCE 2014

### COLLECTIBLES

.....  
ANTIQUE GLASS • COINS • JEWELRY • TOYS • DOLLS  
• RECORDS • BOOKS • ELVIS • COMIC BOOKS  
• MAGAZINES • TOOLS • CHRISTMAS  
.....

**4 N. Plaza, Paris, TX 75460 • 903-783-1144**  
**Open Tuesday-Saturday 10-5**



**OPEN  
TUESDAY - SATURDAY**

• ANTIQUES • VINTAGE GOODS  
• JUNKTIQUES • PYREX  
• HANDMADE ITEMS  
• COLLECTIBLES  
• GLASSWARE • BOUTIQUES  
• CUSTOM GOODS • COCA-COLA  
• DIECAST • AND MUCH MORE!

[www.hickorystreetemporium.com](http://www.hickorystreetemporium.com) •  • 

**122 Bonham St • Paris, TX 903-517-9988**

Art Glass • Unique Cabinets • Pottery  
Primitives • Tables and Smalls • Porcelain

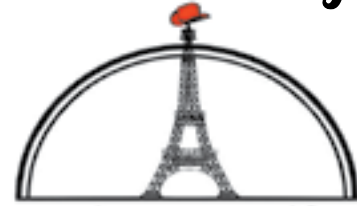
## Mary Bangs

*Antiques & Collectibles • Estate Sales*

29 East Plaza  
Paris, TX 75460

Mary: 903.495.3652  
Carol: 903.495.3634

## Purchase A Piece of Paris



paristexas.gifts

Glee Emmite & Elizabeth Cardenas

**17th 2nd N.E. Paris • TX 75460 • 903-669-8040**



Glee Emmite & Elizabeth Cardenas

## Bee Sweet Paris Gifts

The Sweetest Shop in Paris

**Your One Stop Gift Shop!**

Pure and Raw Local Honey  
Organic Products • Handmade Beauty  
Products • Unique Souvenirs

[www.beesweetparisgifts.com](http://www.beesweetparisgifts.com)

**17th 2nd N.E. Paris • TX 75460 • 903-669-8040**

*Come Find Something Beautiful*



125 LAMAR AVENUE • 903.706.5137

[WWW.TRESORSDEPARIS.COM](http://WWW.TRESORSDEPARIS.COM)

**ART • WINE • CRAFT BEER • ARTISAN CHEESE**

## SWAIM HARDWARE

**Bearings \* Pumps \* Valves**  
**Plumbing & Electrical Supplies**

**FARM • HOME • INDUSTRIAL • CONSTRUCTION**

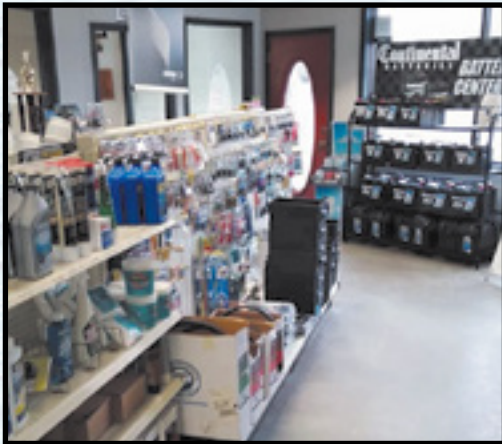
Fencing - Electrical, Hand & Power Tools  
Hoses - V Belts - Power Transmission Equipment

**Hours: 7am - 5pm Mon.-Sat.**

**240 1st SW - Paris 903-784-3321**

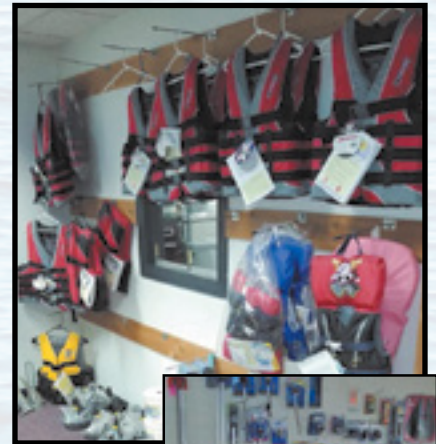
# DID YOU KNOW...

We can supply you with all your graphs trolling motor upgrades, power poles, talons, or any other special needs that you might have.



## FULLY STOCKED ITEMS FOR ALL YOUR BOATING NEEDS

and anticipate a good fishing season, so check us out for all your boating needs. If we don't have what you want most of the time we have next day service!

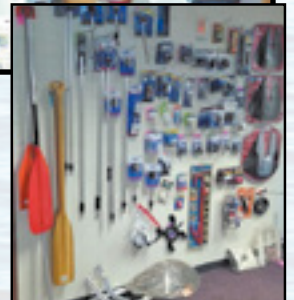


- \* We Have Qualified Installers
- \* Competitive Prices w/Walmart & More Customer Service
- \* We Service All Makes & Models
- \* We Accept All Major Credit Cards

Like us on

facebook

doctorscreekmarine



1710 Clarksville St. • 903-783-0059 • Paris TX • Mon.-Fri. 8:30 - 6:00



*Best Italian Food In Town!*

• DINE IN • TO GO • DELIVERY •

2525 Clarksville St • 903-785-7590



# Welcome to **RENO!**

**D**riving on U.S. 82 East, it can be difficult to tell where Paris ends and Reno begins. But the small city - population a little over 3,000 people, according to the U.S. Census Bureau - has its own definable sense of community.

One of the highlights of the community is the Reno Rail Trail, which connects on the west side to the Trail de Paris. The paved walking and biking nature trail provides a place for residents to get some exercise or spend some family time along the shaded pathways.

One of the city's best places for gathering is Reno Kiwanis Park, which is home to a variety of community events big and small. From ball games, to Fourth of July celebrations, to movie nights, the park stays busy the majority of the year. Activities are regularly held at the park by the Reno Parks and Trail Committee, and the group has an active



*Photo courtesy Reno Parks & Trail Committee*

Facebook page to keep residents in the know.

Reno boasts a variety of small businesses within its city limits, including locally owned eatery staples such as Ms. Nita's Diner.

## THERE'S NO WRONG **WAY TO BUFFET!**

**BUY ONE  
ADULT BUFFET,  
GET ONE FOR**

**\$5**

Must relinquish coupon at register. Valid all day Monday through Thursday only. One coupon per customer, per ticket. Not valid with any other offer or promotion. Does not include beverage, tax, or gratuity. Expires August 31, 2022.

**3545 NE LOOP 286   PARIS   903.785.0319**



# McQueen Propane

Heat • Power • Service • Integrity

*Voted Best In Paris!*



3330 NW Loop 286  
Paris, TX 75461

**903-785-1575**

Home • Farm • Commercial • Industrial

# COOL MATTRESS HEADQUARTERS

FROM BARGAIN TO TEMPUR-PEDIC

Starting at

## \$369<sup>00</sup>

Queen Mattress Only

MENTION THIS AD FOR A **FREE PILLOW** W/\$500 OR MORE PURCHASE

**GUARANTEED LOWEST PRICE OR YOUR BED IS FREE!**

# MFO MATTRESS Factory Outlet


Life. Changing. Mattresses.

TERMS AVAILABLE | LAY-A-WAY  
SMALL CHARGE FOR DELIVERY | U-HAUL PRICES

**NO CREDIT CHECK FINANCING**

1625 Lamar Ave. • Paris | 903-785-8701  
mfoparistx.com | Mon.-Fri. 9-5:30 • Sat. 10-5

## Experience, Passion, and Support From Family Helps Dream Come True



**4207 Lamar Avenue Paris, TX**  
(at the corner of 42<sup>nd</sup> & Lamar)  
**903.706.5200**  
Mon-Fri 9:30-6, Sat 9:30-3:00

David House Jewelry has always had the focus of family first - and that includes their #dhjfamily. They hold their customers close to their hearts, and that is something that will never change. David House has been in the jewelry business since 1979 and was trained by a 2nd generation jeweler, W.M. House Jr. David's dedication to integrity within his craft and his promise of selling high quality products backs up his mission to always be the best in the industry - and he does that with ease.

Their easy in-store financing with 12 months no interest, or up to 36 months to pay, is a popular asset as well by allowing our #dhjfamily to purchase the finest jewelry that is both affordable and reliable.

David House Jewelry features the largest wedding and engagement ring selection in all of NE Texas and SE Oklahoma, including diamonds of all colors. However, diamond rings are not their only forte, as their diamond necklaces, studs, anniversary rings, colored stones, fashion jewelry, watches, clocks and one-of-a-kind gifts are also highly esteemed.

They have a full service repair shop on premise with same day repairs on most jewelry, and they also offer free, one-day sizing on your diamond ring purchases as well. David House Jewelry has an impressive, state-of-the-art laser welder to fix items such as titanium eye-glass frames and other jewelry/metals that cannot be torched.

The store also features a viewing window where you can watch the Goldsmith at work, allowing a transparency with our customers, while showcasing their tremendous skill set and unmatched talent. David House Jewelry provides a truly unique, first-class service with an enormous comfort level for the customer.

The House Family is 3 generations strong and involved in every aspect of the business. David and his lovely wife, Lisa, are proud parents to three grown daughters and grandparents to Sadie, Jaxx, Ellie, and Hattie. Their grandchildren love being "famous" for their parts in the various David House Jewelry commercials, playing jewelry store and watching our Goldsmith at work. When they are not requesting to try on all of the gorgeous gems at the store or drawing up their own unique jewelry designs, the grandchildren love to fish and ride bikes with David and Lisa.

David and Lisa are also a big part of the Paris community including The Central Presbyterian Church, The Rotary Club of Paris Untied, Boys and Girls Club, and The Salvation Army. David has his gemologist certification from the Gemological Institute of America in Santa Monica, CA.

David House Jewelry is located at 4207 Lamar Avenue, in a 2-story grey brick building (at the corner of Lamar Avenue and 42nd Street NE) with their own red light, which they believe is signaling you to stop in and say hi to your favorite local jeweler and see all the new, unique, and innovative jewelry that they have to offer!

David House Jewelry is proud to serve all of North-east Texas and Southeast Oklahoma, as well as our customers farther away. They appreciate their customers' loyalty in shopping local and keeping business in the community that they love. They cherish being a part of your family story, so stop in to see them at David House Jewelry - Where Everything Shines!

DavidHouseJewelry.com | @dhousejewelry



# Thank You For Voting Us #1



**WE CAN  
WARNI  
GO**



Left to Right: JD McNeal, Lat Nichols, Martin Ryan

## PRECISION ENGINE DIVISION

- Free Test Drive And Code Retrieval
- Rebuild Engines - Gas or Diesel
- Engines With Up To 3 YR Warranty
- Total Engine Repair
- High Performance Upgrades



## PRECISION DIESEL DIVISION

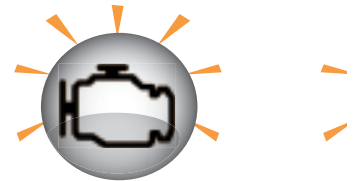
- Free Test Drive And Code Retrieval
- Maintenance • Injectors • Sensors
- DEF Systems
- Electrical Repair By ASE Master Technician
- All Driveability Problems
- Turbos

## PRECISION TRANSMISSION DIVISION

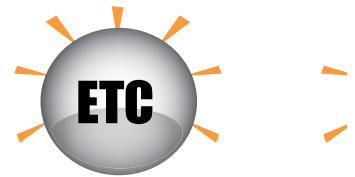
- Free Test Drive And Code Retrieval
- Rebuild Manual & Automatic
- Service All Makes & Models
- Transmission Fluid Service \$179

## PRECISION UNDER-CAR DIVISION

- Free Test Drive And Code Retrieval
- Brake Jobs
- Ball Joints • Control Arms
- CV Axles • U-Joints • Differentials
- 13 Brands Of Tires Available!
- Hunter Alignment Machine



**CHECK  
ENGINE**



**ELECTRONIC  
THROTTLE**

**WE WILL H  
AND RET  
CODE**



**ALSO OPEN SAT**

**2675 N. MAIN PA**

**WWW.PREC**

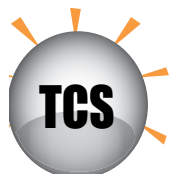
# MAKE YOUR NG LIGHTS AWAY!



**ANTI-LOCK  
BREAK**



**SUPPLEMENTAL  
RESTRAINT**



**TRACTION  
CONTROL**



**SUSPENSION  
CONTROL**

**LOOK UP SCANNER  
RIEVE TROUBLE  
S FOR **FREE!**\***

\*Excludes Auto Dealers



## MasterEngine Rebuilders

Why Spend **THOUSANDS** of dollars on a new vehicle when you can get your engine replaced or rebuilt for a fraction of the cost. We also build high performance engines!



**Call for Pricing**

## Master Transmission Specialists



### Premium Series Transmission

- 1 Year 12,000 mile warranty
- New Clutches, Bands, Seals, Gaskets, and Filters



### Platinum Series Transmission

- 3 year 100,000 mile warranty
- All new updates installed
- Replace any weak factory parts with heavy duty replacement
- Reman Torque Converter
- New Clutches, Bands, and Seals

**\$99 off**

**Any Transmission or Engine  
Repair/Rebuild**



**PRECISION NHRA CHAMPION DRAGSTER**

**TURDAY 8-12**

**PARIS, TX • 903-784-7362**

**ISIONPARIS.COM**

**Over 98,000 Repairs Completed.  
Best Techs, Best Parts, Best Warranty.**

**CALL ABOUT FINANCING!**

**903-784-7362**

# History Of FANNIN COUNTY



*Photo by Krista Wadsworth*

**C**otton, corn and cattle were the main staples of Fannin County in its early days in the late 1830s and 1840s, when the current county boundaries were culled from a much bigger territory that included 22 surrounding counties. The county is named for James Walker Fannin Jr., a Texas Revolutionary.

According to the Texas State Historical Association, the early settlers of Fannin County struggled to get along with Indians in the area. Attacks on the Indians and attacks on the settlers escalated from 1837 until the Treaty of Bird's Fort was signed six years later.

Bois d'Arc became the Fannin County seat in 1843, and the community was renamed Bonham in 1844 in honor of James

Butler Bonham, one of the men who defended the Alamo. Bonham remains the most populous city in the county with a little more than 10,000 residents, according to the U.S. Census Bureau. As of 2019, the county's population was just over 35,000. The Fannin County Courthouse is currently undergoing extensive renovations.

Under construction in Fannin County is the first water reservoir to be built in close to 30 years in the state of Texas, named Bois d'Arc Lake. The reservoir will provide additional water supply for the rapidly growing North Texas area as well as recreation and economic benefits, according to the North Texas Municipal Water District.

## Windom Feed Sack

**Stan & Sheri Thedford - Owners**



*Down Home,  
Made from Scratch!*

**Homestyle Lunch Buffet Every Day**



*Plus Ribs & Chicken Strips!*

**Wed-Sun  
11am - 2pm**

**Fri & Sat  
4pm - 9pm**



**414 Main St. • Windom, TX • 903-623-3013**

# Welcome to HONEY GROVE!

**H**oney Grove, which bills itself the “Sweetest Town in Texas,” traces its name back to early Texas history – before Davy Crockett died at the Alamo. Reportedly Crockett traveled through the area on his way to San Antonio in 1836 and stayed in a grove with an abundance of honey trees. Rumor has it that he detailed the area in letters back home to Tennessee and wrote of a desire to one day live there. While Crockett never made it back to Honey Grove, his friend, Samuel Erwin, is credited with founding the town. Erwin was Honey Grove’s first settler, first postmaster and also one of Fannin County’s first justices of the peace, according to the city’s website.

One of the jewels of the area is the Honey Grove Library and Learning Center, a thriving small-town library in a 100-year-old historical downtown building. The Bertha-Voyer Foundation started a fundraising campaign to renovate the library in 2018, which netted more than \$800,000 from donors as well as grant



*Photo courtesy Honey Grove Library and Learning Center*

funds. According to the library website, the library buildings subsequently underwent a major renovation and restoration project that provided new spaces for public access computers, a local history center and new spaces for educational and community programs and events. The renovation, completed in January 2020, included the installation of an elevator, new handicapped-friendly doors and restrooms, which makes the entire facility available to all.

Honey Grove has communitywide activities – such as the downtown Margarita Crawl, which was held in June – and events that draw people from all over the Red River Valley, such as the Davy Crockett Days festival, which is held each year in the fall. These events are added to the variety of small businesses in the area ranging from antique stores, to boutiques, to eateries and more.



## CUSTOM AUTO AND RESIDENTIAL WINDOW TINTING

HOME: 903-583-3759 | CELL: 903-227-6963

**RICK'S DETAIL SHOP**

606 NORTH CENTER | BONHAM, TX 75418 | SHOP: 903-583-9768

## HIDDEN GROVE RV RESORT

*A Brand New High-End RV Park*



### AMENITIES:

Laundry Services  
Free Wi-Fi  
Hiking Trails  
Primitive Camping  
Full Showers



Fishing Ponds

Cabins  
Full RV Hooks  
Pool  
Propane  
Beer Sales

19300 E US Highway 82 • Honey Grove, TX 75446  
855-723-4140 • [hiddengrove3@gmail.com](mailto:hiddengrove3@gmail.com)

# Welcome to BONHAM!



Photo by Krista Wadsworth

**B**y far the largest city in Fannin County, Bonham, which has a population of a little over 10,000 people, is a hub for residents from miles around as well as a popular tourist destination in Northeast Texas.

At the center of downtown, the Fannin County Courthouse is undergoing a complete renovation project to restore it to its former glory. The building is surrounded by a busy downtown area that sports a number of restaurants and other shops. But perhaps Bonham's biggest draws are Lake Bonham, a 1,020-acre lake that was developed in 1969 by the city of Bonham, and Bonham State Park.

Lake Bonham boasts boat ramps, a swimming beach, fishing pier and a playground. Campsites, including RV sites, tent camping sites, primitive camp sites and screened shelters are available for rent. For events and parties, the lake also has an enclosed event center as well as an open-air pavilion, and both are available for rent. Fishermen are most likely to find crappie,

large-mouth bass and catfish.

Bonham State Park is a 265-acre area that has a 65-acre lake and is a popular recreational destination offering camping, fishing, swimming and hiking opportunities. There are 20 campsites and a full restroom with showers for campers, and there are group options including barracks with a full kitchen for rent. Visitors can hike and bike on 8.75 miles of trails, and paddle boats, kayaks and canoes can be rented at the lake from 8 a.m.-3 p.m. daily, weather permitting.

Jones Field Airport, operated by the city, is also a draw for the area. The airport sports a 4,000-foot runway, terminal building, pilot lounge and an onsite aircraft mechanic. According to the city of Bonham, Jones field is a "fully operational general aviation airport that caters to industrial, business and recreational users."

## PARIS LUMBER

### Is Your Complete Lumber and Building Materials Center

**EXPERIENCED PEOPLE • QUALITY PRODUCTS  
COMPETITIVE PRICES • OLD FASHIONED SERVICE!  
• LARGE INVENTORY •**



**3555 N.E. LOOP 286**

**903-785-0771**

*"Where the customer is #1"*



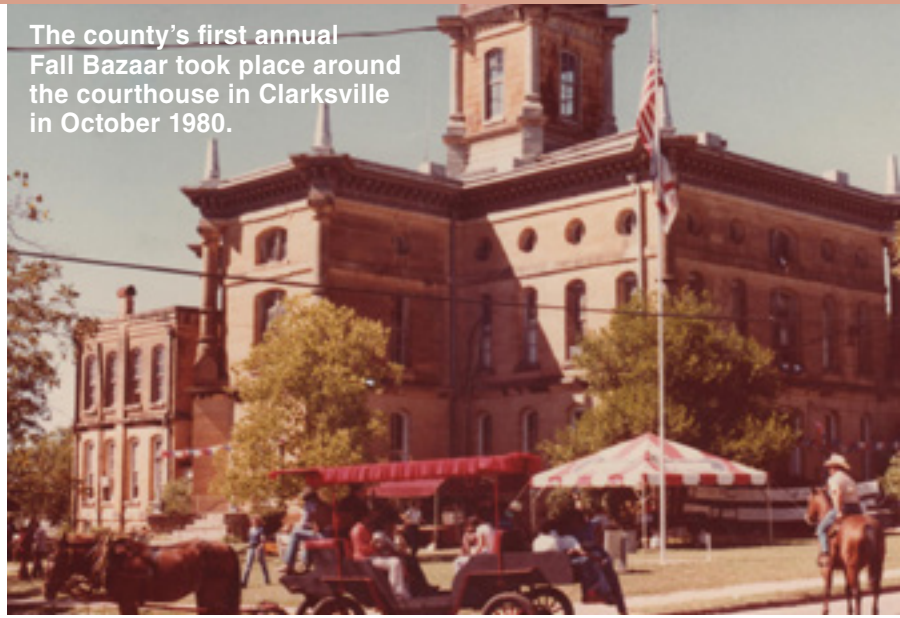
# History Of RED RIVER COUNTY

Before the current Red River County boundaries were established in 1846, the county encompassed a wide swath of territory that is now split into about 10 Texas counties, earning Red River County the title of the “Gateway to Texas.”

The first settlers in the area in the early 1800s had trouble gaining valid land titles because there was confusion about whether the territory was included in the Louisiana Purchase, according to the Texas State Historical Association. Cattle and cotton sustained the area in its early years. During and after the Civil War were years of particular strife for Black people and it took federal troop interference after the war to control harsh, unlawful treatment and violence.

A lack of transportation routes in its early years likely contributed to the county's lack of growth early on. The Red

The county's first annual Fall Bazaar took place around the courthouse in Clarksville in October 1980.



*Photo courtesy Red River County Historical Society*

River would have been the primary method of transportation at the time, but according to the TSHA the river was only navigable for part of the year, meaning at other times supplies and food had to be brought in from surrounding areas 100 miles away. It was not until 1876 and the advent of the Texas and Pacific Railroad that the county had a reliable means of transportation that allowed it to grow.

The U.S. Census Bureau estimates a county population of just over 12,000 people in 2019. Clarksville, its biggest city, contains about a quarter of the county's population.

## Welcome to CLARKSVILLE!

Clarksville's history, dating back before the state of Texas was formed, has earned it the title of the “Gateway to Texas.” The seat of Red River County, James Clark founded the city of Clarksville in 1833.

Like many small, rural towns, Clarksville has seen its fair share of hardship, but the downtown area, in particular, has seen a resurgence since the early 2000s thanks to local grants and state grant funds from the Texas Department of Transportation and Texas Capital Fund Main Street. According to the city's website, renovations and upgrades included new sidewalks and lighting, landscaping and seating, which paved the way for the return of communitywide events and festivals, some of which draw people from all over the Red River Valley.

Festivals and events in Clarksville include the Fine Arts Festival, Gateway to Texas Get-A-Way Tour, the Tandem Bike Ride and the Red River County Historical Society's Fall Bazaar, which has taken place each fall since the 1980s.

The Clarksville square now boasts antique stores, boutiques, galleries, a quilting shop and dining options, among other locally owned businesses, and renovations to other downtown buildings



*Photo courtesy city of Clarksville*

are currently ongoing, according to the city website.

History buffs have much to see in Clarksville, from historic homes, to State Historical Markers. Historic buildings include the Historic Red River County Courthouse, built in 1885; the Red River County Public Library building; the Col. Charles Demorse home, which was the first home in Clarksville; the Christ Episcopal Church; the Old Jail Museum; and Miss Belle's House. A historic creek walk takes visitors along the Delaware Creek, and by the circa-1905 First Presbyterian Church and the historic single-lane T.P. Lake Bridge, according to the city's website.

Clarksville is also home to the Lennox house, which was home to one of Clarksville's most prominent families dating back to pioneer times. The house, a completely restored Queen Anne Victorian home, was willed to the city. The city, Red River County and many other local causes benefit from the generosity of the family through the Martha, David and Bigsby Lennox Foundation, which was founded in 1985 and makes grants between \$500,000 and \$1 million each year.

# History Of HOPKINS COUNTY

**I**t's hard to think of Hopkins County without thinking of the dairy industry that put it on the map, but settlers had been in the area for 100 years before the Carnation Milk Company set up shop in 1937.

Hopkins County was established in 1846 but received land reductions in 1870 and 1871 to form the current day county boundaries. Corn and wheat were the main crops in the early days, and cattle and sheep ranching were also staples of farms in the area. Later, the main crop would become cotton. Rail transportation reached the area in the 1870s, ushering in a new period of growth. But it was the development of roads decades later that led to the rise of the milk industry in the area. Taxpayers in 1929 funded roadways to be built with the express purpose of luring a dairy process plant. Two years



*Photo courtesy city of Sulphur Springs*

after the roads were completed in 1935, the Carnation Milk Company started operations. That gave rise to more than 200 dairies in the area, according to the Texas State Historical Association.

That industry earned the county the distinction of being the No. 1 dairy producer in the state, a claim that it held until 1990, according to a March 2020 article from the *Longview News Journal*. From that point, weather and other economic factors led to a decline of the dairy industry in Northeast Texas as production moved west to the Panhandle, according to sources cited in the article, but the dairy industry still remains alive in Hopkins County.

## Welcome to SULPHUR SPRINGS!

**S**ulphur Springs has a tagline of “Just play. Have fun. Celebrate!” Through a variety of community events geared toward residents and visitors along with other recreational opportunities, the city makes sure to live up to its promise with a variety of activities for the whole family.

According to the city's website, Sulphur Springs was named for the water that flows beneath the area's soil – water that allowed crops to thrive and help establish the area as an agriculture mainstay in the region. However, the area is best known for its history in the milk production industry, and more recently, the equine industry. The city became home to the Carnation Milk Company in 1947, which sparked decades of thriving dairy farms in the area. While milk production still takes place in the area, the advent of the Civic Center, its 40,000-square-foot livestock pavilion and additions of 300 stalls and a warm-up arena has created an attractive draw for horse



*Photo courtesy city of Sulphur Springs*

enthusiasts. The city has also seen an influx of horse operations from around the country, according to the city.

Sulphur Springs boasts more than 3,000 acres of public parks, more than 50 restaurants and a thriving Downtown District. The Southwest Dairy Museum and Learning Center and the Hopkins County Veterans Memorial are regular spots for visitors. The city also boasts live theater and performances by the North East Texas Symphony, which is comprised of musicians from surrounding cities.

For those looking for fresh produce and other locally sourced and made products, Celebration Market is hosted in Celebration Plaza on Saturday evenings from May to September. In addition to fresh fruits, vegetables and meats, the market also features handmade arts and crafts. The market also boasts live entertainment, and a splash pad in the plaza is available for children.

# ATTRACTIONS

## RENO KIWANIS PARK

A not-so-hidden gem in the Reno community is Reno Kiwanis Park, which hosts everything from ballgames, to movie nights, to Fourth of July celebrations. Residents and visitors can stay up to date on activities at the park by following the Reno Parks and Trail Committee's active Facebook page. According to the city of Reno website, the park's pavilion can be reserved for parties or events, and electricity and water are available for a small fee. The baseball and soccer fields can also be reserved.

**6820 Pine Mill Road, Reno**

## 82 SPEEDWAY

The 82 Speedway dirt track in Petty, about 15 miles west of Paris, is home to car racing including United States Racing Association events on Saturday nights through much of the spring, summer and into the fall. The track has been open for three years and is owned by locals Tracy and Shelley Peters of Nevada, Texas. General admission to the track for most events is \$15, and less for seniors and children. Pit access tickets can also be purchased. The speedway has food and drinks available for purchase, but attendees can also take a small cooler with food and drinks into the stands for a \$5 charge.

**16369 U.S. 82, Petty**

## BUFORD PARK

While Buford Park in Sulphur Springs is best known for its 1-acre castle playground, "Kids Kingdom," which was built in 1997, the city park includes a variety of recreational opportunities for residents and visitors. It includes walking and jogging trails, a pond with a boardwalk, baseball fields, a basketball court, gazebos and pavilions and a skateboard park. In addition to many other events, it is home to the World Champion Hopkins County Stew Contest, the Texas State Champion Homemade Ice Cream Freeze Off and the Hopkins County Fall Festival, according to the city's website.

**733 Connally St., Sulphur Springs**

## RED RIVER VALLEY VETERANS MEMORIAL MUSEUM

Sitting on the grounds adjacent Paris' Love Civic Center and the famed Eiffel Tower with the red cowboy hat is a more solemn place for visitors – The Red River Valley Veterans Memorial Museum. While the memorial's inner-most ring recognizes those service men and women from the Red River Valley area who lost their lives in war, the memorial also recognizes all veterans – those who died, those who have served and those currently serving - from all wars no matter their home-place. A computer kiosk can help visitors find friends or family members whose names have been engraved at the memorial. The memorial is undergoing its last expansion phase, which will include more pavers, a Choctaw Code Talker monument and other displays, in addition to a Cobra Attack Helicopter and a Howitzer cannon.

**2035 S. Collegiate Drive, Paris**

## EIFFEL TOWER

Visitors have come from all over the world to see the city's westernized version of the Eiffel Tower. From celebrities to locals, the tower has seen a little of everything, from casual tourist visits to baby gender reveals to wedding proposals and much in between. After an earlier wooden version was destroyed, the modern version of Paris' famed Eiffel Tower was constructed in 2016. At 65 feet tall, the city boasted it had the second tallest Eiffel Tower in the world – until Paris, Tennessee, increased the height of its tower to top the Texas one, according to the Lamar County Chamber of Commerce. Paris, Texas, answered by adding a red cowboy hat that comes in at 4 ½ feet tall in 1998. Paris held the "second tallest Eiffel Tower" title until a taller tower was constructed in Las Vegas. Paris can, however, say it has the tallest Eiffel Tower with a red cowboy hat on top.

**2025 S. Collegiate Drive, Paris**

*Continued on next page*



**RENO KIWANIS PARK**

*Photo courtesy Reno Parks and Trail Committee*



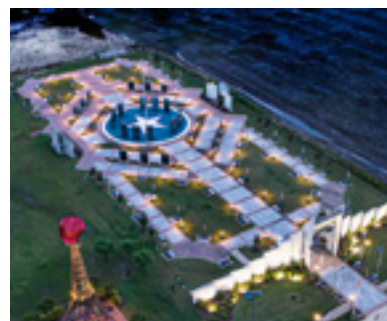
**82 SPEEDWAY**

*Photo courtesy 82 Speedway*



**BUFORD PARK**

*Photo courtesy city of Sulphur Springs*



**RED RIVER VALLEY VETERANS MEMORIAL MUSEUM**

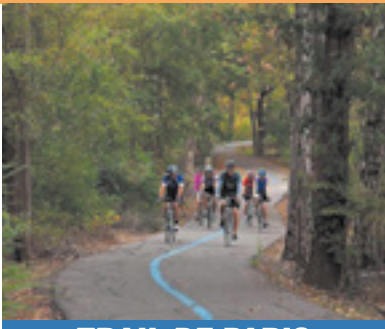
*Photo courtesy Tony Corso*



**EIFFEL TOWER**

*Photos courtesy Lamar County Chamber of Commerce*

# ATTRACTIONS



**TRAIL DE PARIS**

*Photo courtesy Lamar County Chamber of Commerce*



**PUMP TRACK**

*Photo courtesy Pump Track Paris*



**WADE PARK**

*Photo courtesy Tony Corso*



**LAKE CROOK**

*Photo courtesy Lamar County Chamber of Commerce*



**PAT MAYSE LAKE**

*Photo courtesy Barber Hills Trail Facebook page*

## TRAIL DE PARIS

Although it is part of a much larger trail project stretching through Northeast Texas, the Trail de Paris is a slice of shaded heaven for Paris residents wanting to walk, run or bike. The trail runs east through the heart of Paris from 4th Street S.W. and connects with the Reno Rail Trail for 10 miles of paved pathways. Markers every quarter mile along with benches provide guidance and respite for visitors, and other additions include interactive signage for children, a butterfly garden and a yoga area. The Trail de Paris is part of the Northeast Texas Trail, which, when complete, will be the longest connected trail in Texas and the fifth longest in the country, according to the Lamar County Chamber of Commerce.

## PUMP TRACK

Paris' newest attraction, a bicycle pump track designed by a world-class designer, is the third major attraction to be constructed near Love Civic Center. Although Pump Track Paris has only been complete since November 2020, the pump track has already hosted two major events. However, the pump track also benefits the local community and bike enthusiasts from around the area – it is open to the public during the day and free to riders of all ages and skill levels.

**2025 S. Collegiate Drive, Paris**

## WADE PARK

Wade Park is one of, if not the most visited parks in Paris. The large, mostly shaded space includes baseball/softball backstops, pavilions and picnic areas, two playgrounds and a roller hockey rink. With a section for younger children and a section for older children, the playground's most iconic feature is its climbable rocket ship. Sections of the pavilion are available to rent for a nominal fee for both residents and nonresidents, according to the city of Paris website.

**2400 E. Price St., Paris**

## LAKE CROOK

The 800-acre area known as Lake Crook is a popular fishing and boating area off Highway 271 North. According to the Texas Parks & Wildlife, the predominant fish in the lake are catfish, largemouth bass and small crappie. For younger individuals, there is also a playground and a large pavilion that is available for rent to residents and nonresidents. Picnic tables are placed throughout the park. According to the Texas State Historical Association, Lake Crook is a man-made lake that was constructed in 1923.

**3800 Old Lake Crook Road  
(County Road 31700), Paris**

## PAT MAYSE LAKE

Home to some of the area's best fishing, the 6,000-acre Pat Mayse Lake is located about 15 miles north of Paris near the small town of Powderly. The 69 miles of shoreline, however, means the lake is also kept busy with campers, hunters, swimmers, picnickers, hikers and bikers. The lake has three major camping areas - Pat Mayse West, Pat Mayse East and Sanders Cove - which offer water and electricity hookups, bathrooms, picnic tables, boat ramps and water access, among other amenities. One of the highlights of the area is the 13.5 miles of hiking and biking trails known as Barber Hills. The trails are rated by most recreational sites as mostly intermediate with a couple of beginner trails.

**CR 38500, Powderly (Pat Mayse West campground)**



# FARMERS AND ARTISIAN MARKET

**T**he Paris Farmers and Artisan Market has never been more active than it is today—at least in recent memory. Located just off the downtown square, the area known as Market Square has operated in some form or fashion since 1916, according to Paris Main Street Coordinator Cheri Bedford. The open-air Market Square pavilion was built in the 1980s, courtesy of an early Main Street Project program.

The Paris Farmers and Artisan Market takes place every Saturday, 8 a.m.-1 p.m., May through October. The pavilion has space for 32 vendors at its tables, and vendors also set up in open areas and occasionally in the parking lot.

“Every Saturday there are people from out of town,” Bedford said. “They are either driving through, have heard about it and come to see it for themselves or visiting with family and making the farmers market their early morning fun stop. And we also have our loyal customer base here in Lamar County.”



Bedford said the market draws in the neighborhood of 400-500 customers on any given Saturday.

Vendor offerings include growers, bakers, Keto products, fresh flowers, organic personal care products, coffee, meats and art ranging from paintings, to photography, jewelry and more. Bedford said there are also prepared foods for anyone looking for breakfast or lunch on Saturdays.

Market guidelines stipulate vendors must be within 75 miles of

*Continued on next page*

## Market History

Bedford said the modern iteration of the farmers market started in 2009 with one vendor who would set up at the market on a regular basis. The vendor had a lot of produce and utilized a quarter of the pavilion.

“It was nice because they were open for six days a week,” Bedford said. “However, there was a lot of space that didn’t get utilized.”

She said in 2010, a small group of volunteers worked together to reach out to local farmers, artisans and bakers and invited them to set up on Saturdays. Their success convinced more vendors to give it an initial try.

“The Main Street project did a lot of promotion for the Saturday Market,” Bedford said. “It took a few years to get things off the ground, and in the early years there were times when only a handful of customers were shopping on a regular basis. As word began to spread, the people of Paris responded, and so did the vendors.”



Paris, and customers come from all over the region, adding to the draw of downtown and jumpstarting the Saturday shopping day, Bedford said.

"It definitely fits with the rest of the downtown offerings," Bedford said. "The downtown is a place where one can shop in unique shops with small businesses."

Although the market has featured musical performers on and off throughout the years, a new element this season is an acoustic jam session, where local musicians looking for a place to play or a chance to hone their skills can join in from 10 a.m. to market close.

"We want people who play to just show up and join in," Bedford said.

The farmers market's signature event is the Hatch Chile Fest every year on the Saturday before Labor Day.

"One of the vendors makes a run to Hatch, New Mexico, and picks up 2,500 pounds of chiles," Bedford said. "We have the aroma of fresh hatch chiles fill the market as they are roasted on site."

Bedford said in years past the festival has featured a mariachi band, grilled burgers with Hatch chiles and several vendors incorporating Hatch chiles into their recipes.

The market also incorporates crafts for kids throughout the season, and Bedford said to keep an eye on the Paris Farmers and Artisan Market Facebook page for event details.

Although the seasonal market ends in October, Bedford said there was a pilot program – a Mini Market – that opened on Saturdays last year from November through April from 11 a.m.-1 p.m.

"It was very successful from what I heard from the vendors, and so it will most likely continue after the regular market season ends," Bedford said.

*Photos courtesy Paris Farmers and Artisan Market*





33 1st NW • Paris, TX • 903-785-4519



Thank you for making us  
**YOUR HOMETOWN  
CHOICE!**

 Find us on Facebook.



*We were here for your grandparents,  
and we'll be here for your grandchildren.*

Stone Title Company has been around for over 100 years. We have over 150 years of experience in the title business and our real estate attorneys have over 100 years of experience. Combined we have over 250 years of knowledge which means we have seen just about everything, and have insured most of Lamar County at one time or another.

Stone Title Company is an office that not only works together but also engages in activities with each other outside of the office. We consider ourselves not only co-workers but family.

Stone Title Company would like to THANK EVERYONE for voting us BEST TITLE COMPANY in Lamar County again and again. We are very grateful for our customers and know that without you, we would not exist. We appreciate each and every one of you.



# THE SHOPPER

**Is available online every Tuesday!**

**[www.dseshopper.com](http://www.dseshopper.com)**

**Place your ad online,  
by phone, or in  
person...**

- **903-784-3328**
- **101 Lamar Ave.**
- **Paris, Texas**



# **PARIS JUNIOR COLLEGE** **IS YOUR BEST WAY TO** **CONNECT TO A BETTER FUTURE**



**At Paris Junior College you'll find:**

- workforce training for a great career or academic classes to transfer to university
- short-term skills classes for better jobs and pay

**Contact PJC today:**

**[apply@parisjc.edu](mailto:apply@parisjc.edu) • [www.parisjc.edu/apply](http://www.parisjc.edu/apply) • 2400 Clarksville Street, Paris, Texas • 903.782.0425**