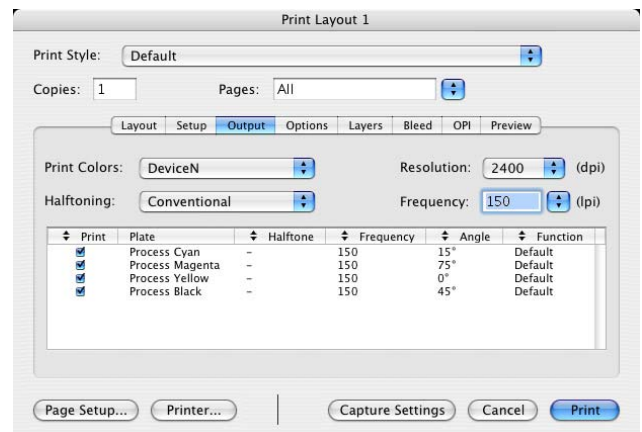
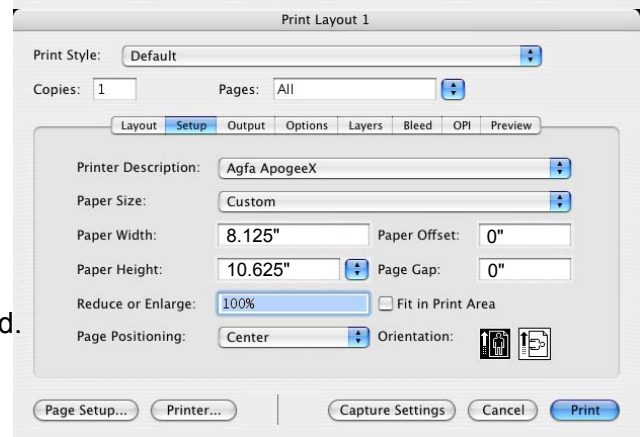
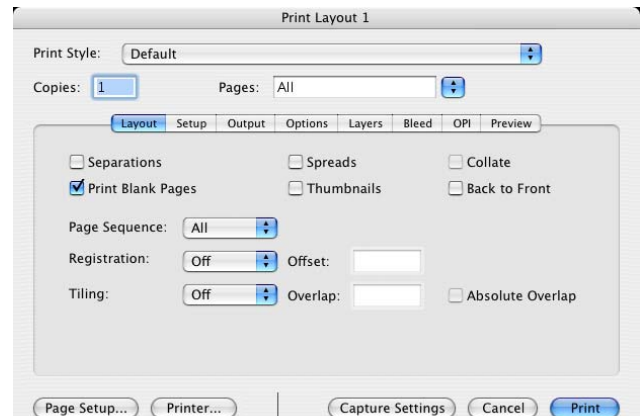


## 4. How to print from QuarkXPress 6.x

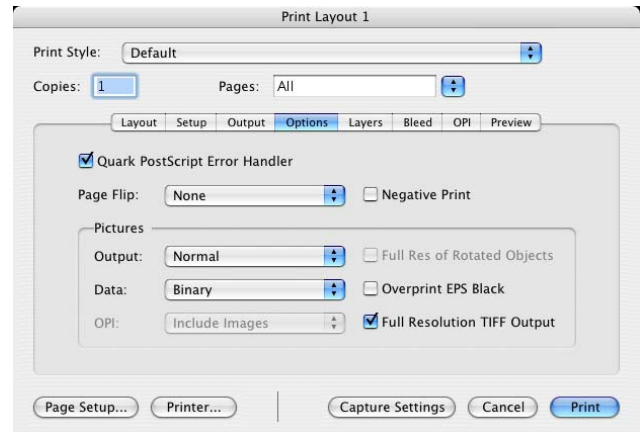
- From the *File* menu select *Print...*
- Select the *Pages* you want to output.
- Turn *Separations* off, unless High resolution DCS images are used.  
*Note:*  
*With 'Separations' on, EPS images in RGB mode must be converted to CMYK mode before printing.*
- Turn *Registration* off.
- Select *Print Blank Pages* unless you don't want to include them.
- Select the *Setup* tab.
- In the *Printer Description* pull-down, select the *Agfa ApogeeX* PPD or the appropriate AdobePDF PPD.
- In the *Paper Size* pop-up, select *Custom* and fill in the correct *Paper Width* and *Paper Height*.  
*Note:* If a bleed applies, add 1" to both width and height to catch bleed.
- Leave the *Reduce or Enlarge* value to 100%.
- In the *Page Positioning* pop-up select *Center*.
- Select the *Output* tab.
- In the *Print Colors* pop-up, select *DeviceN*.  
*Note:*  
*Selecting 'DeviceN' allows multiple inks and CTIFFs without the Agfa CTIFF XTension. This is the appropriate setting when printing spot colors.*  
*Selecting 'Composite CMYK' will convert TIFF images to CMYK. This is the appropriate setting for CMYK output.*
- Set the *Resolution*, *Halftoning* and *Frequency* for final output.



- Select the *Options* tab.
- Select *Quark PostScript Error Handler*.
- In the *Pictures* section select *Normal* in the *Output* pop-up, *Binary* in the *Data* pop-up and enable *Full resolution TIFF output*.

*Note:*

*If a print job flushes without printing, the 'Binary' format may be causing an error; when this occurs, try choosing 'Clean 8-bit' or 'ASCII' instead.*

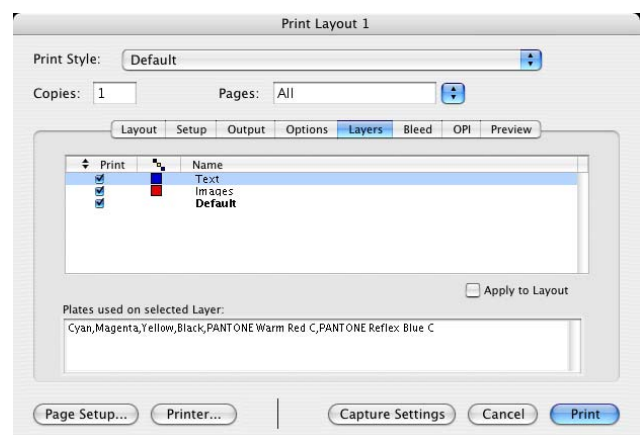


- Select the *Layers* tab.
- Suppress output for layers you don't want to print.

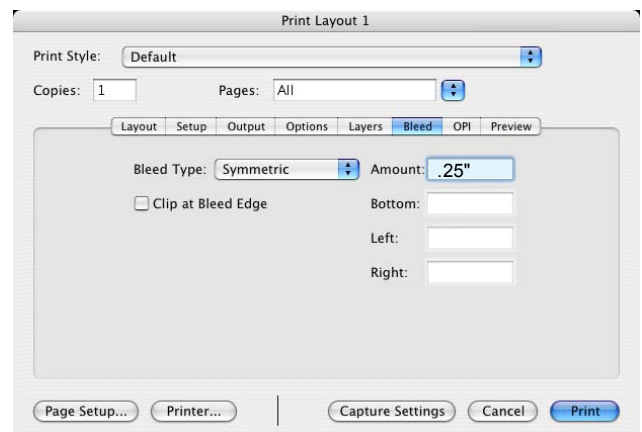
*Note:*

*If you have hidden a layer (and thus suppressed it), checking the *Print* column causes the *Layer's* items to print.*

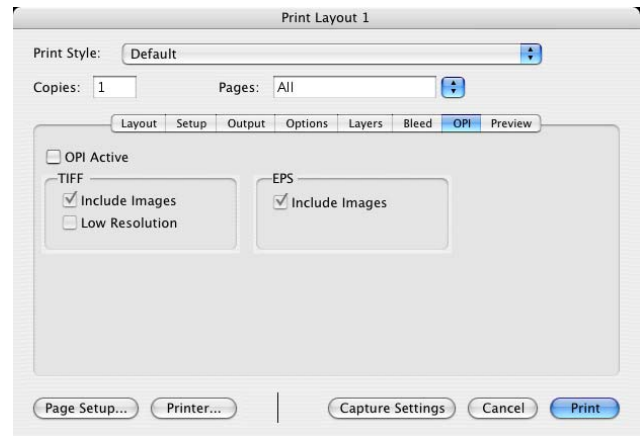
*If you have suppressed output for an individual item, it will never print, regardless of whether or not it's layer is suppressed.*



- Select *Bleed* tab.
- Use 0mm and disable *Clip at Bleed Edge* or set this value to the same as the Normalizer settings and enable *Clip at Bleed Edge*.



- Select the OPI tab.
- Disable *OPI Active*.



- Save the PS file, click *Printer...* and continue with the following procedure.  
In the *Printer* pop-up select your printer.  
Select the PDF button and "Save PDF as PostScript..."  
Save the .ps file and it's ready to Distill.

