

2023-2024

FREE

THE WAUKEE SOURCE

Your **essential handbook** for living in Waukee



Waukee
THE KEY TO GOOD LIVING

- FESTIVALS AND FUN
- GROWTH CONTINUES
- NEED TO KNOW
- WAUKEE TRIANGLE
- DAY OUT AROUND TOWN

RESIDENTIAL CUSTOMER
BIG GREEN
UMBRELLA MEDIA
8101 Birchwood Ct. Ste. D
Johnston, Iowa 50131

PRSR STD
ECRWSS EDM
U.S. POSTAGE
PAID
BIG GREEN
UMBRELLA MEDIA

PUBLISHED BY

WAUKEE
Living
MAGAZINE

WELCOME TO **MI-FIBERHOOD!**

RESIDENTIAL SOLUTIONS

Now more than ever,
connectivity is crucial.

Whether you're streaming,
gaming or working from
home, we have options to
fit your needs!



Mi-Fiber is a local
internet provider using
fiber optic technology
to bring the future of
broadband right to
your door.



515-850-0500 | info@mi-fiber.net



Membership Pays

As a financial cooperative, GreenState's cooperative structure benefits everyone. Through competitive pricing and low fees, millions of dollars each year goes back into the pockets of members. Even non-members benefit from the competitive financial services landscape in our state.

Stop by to meet with our team of financial experts

Rewards Checking • CDs & IRAs
Money Markets • Insurance
Home / Auto Loans • Credit Cards
Investments & Trust Services • Business Loans

Did You Know?

GreenState is consistently ranked in the Top 1% Nationally for returning profits with better rates & lower fees. That means one of the Top financial institutions in the country, is right here in Waukee.

FINANCIAL INSTITUTION	RANK (9,538 U.S. Institutions)
GreenState	18
US Bank	5,951
Chase	5,995
Wells Fargo	7,954



GreenState
CREDIT UNION

1085 E Hickman Road, Waukee
515-330-4740

*Data provided by Callahan and Associates 3/31/23



Photo credit: Waukee Aerial, LLC

Answers to your questions!

We are proud to bring you the Waukee Source, an annual guide for residents of Waukee provided by the publishers of Waukee Living magazine and the local businesses that advertise their goods and services in these pages.

In this easy-to-use publication, you will find answers to the many questions you have as a resident in the community. More than just a standard directory, The Waukee Source is a comprehensive resource for those who wish to know who their city council representative is, who to contact at various clubs and organizations, what churches are in town, or what local events are planned for the next year.

In addition, we provide local historical information on the city, as well as details on city parks, the library and other various entities, complete with “numbers to know” should you need to reach out.

Maybe most importantly, we hope you patronize the local businesses advertising their goods and services to you. They know you have lots of options to spend your dollars throughout the metro, but your loyalty to them is truly appreciated. We are a small business, too, and we value the longstanding relationships we have built with our advertisers and our readers. Our goal in publishing The Waukee Source is to help you enjoy living in Waukee even more than you already do.

If you like this guide, be sure to thank the local advertisers and tell them how much you appreciate the information and their support. If you would like additional copies of The Waukee Source, contact Shane Goodman at 515-953-4822 ext. 305 or shane@dmcityview.com.

Of course, things can change a lot in a year's time, so be sure to contact the individual entities listed for updates. We try our best to include as much information as possible, but if you notice any errors or omissions, contact editor Tammy Pearson at 515-953-4822 ext. 302 or tammy@iowalivingmagazines.com.

Be sure to place this guide in a spot where you can easily find it and refer to it often. And then get out and enjoy everything Waukee has to offer! ■



MojoVet

**Accepting new patients at
the MojoVet Waukee clinic.**

LOCATED OFF I-80, EXIT 117



- ✓ Wellness and Sick Exams
- ✓ Low Stress Handling
- ✓ Surgical Procedures
- ✓ Advanced Dentistry
- ✓ Ultrasound
- ✓ Digital X-Rays
- ✓ Skin Care and Allergy Control
- ✓ In-House Laboratory
- ✓ Laser Therapy
- ✓ Hospice Services
- ✓ In-Home Euthanasia
- ✓ House Call Services

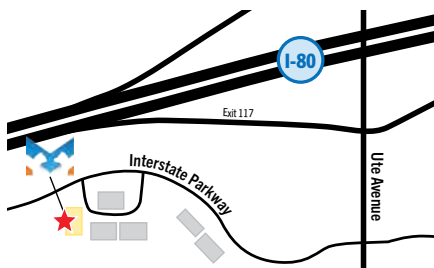
With MojoVet Mobile, We Come to You!

No more anxiety-filled car rides.



734 INTERSTATE PKWY
WAUKEE

515-518-8753
833-MOJOVET



Less Stress for Your Pet

CONTENTS

Common questions 7

History of Waukee 10

Mayor and city council 12

Waukee city parks 14

Golfing and ice skating..... 20

Raccoon River Valley Trail map 22

Trails 23

Waukee clubs and organizations 24

Waukee map 26

Waukee events..... 30

Waukee churches 34

Commercial development 36

Waukee Public Library..... 38

Waukee by the numbers 41

Waukee Community School District 42

Assistance programs 46

Numbers to know..... 50

Publisher Shane Goodman
Vice President..... Jolene Goodman
Editor..... Tammy Pearson
Advertising Sales..... Martha Munro
Creative Director Celeste Tilton
Graphic Designer..... Jayde Vogeler
Digital Manager Beckham Miller
Business Office Manager..... Brent Antisdell
Distribution Manager..... Mike Chiston

Information supplied by the City of Waukee, local organizations and individuals. A copy of this publication is mailed to every address in the 50263 zip code. Additional copies are available at Waukee City Hall. To place advertising in the 2024-2025 Waukee Source, contact Jolene Goodman at 515-326-0082 or email jolene@iowalivingmagazines.com. Contents® 2023 Big Green Umbrella Media, Inc. All rights reserved. Nothing may be reprinted in whole or in part without permission of the publisher. 8101 Birchwood Court, Suite D, Johnston, IA 50131, 515-953-4822.



COMMON QUESTIONS

HOW DO I RENEW MY DRIVER'S LICENSE?

The Iowa DOT's Driver's License Office for Dallas County residents is located at 1156 S.E. Ashworth Road in Waukee. Visit www.iowadot.gov for additional information. You may also qualify for online renewal. Visit <https://mymvd.iowadot.gov> to see if you meet the requirements.

HOW DO I REGISTER TO VOTE IN DALLAS COUNTY?

If you have updated your Iowa Driver's License with your current Waukee address, you can register electronically at <http://sos.iowa.gov>. You may register to vote in person at the Dallas County Auditor's Office located at 210 N. 10th St. in Adel. Call 515-993-4751 with questions. Visit <http://sos.iowa.gov> to locate your polling place(s) or call the Dallas County Elections Office at 515-993-6914.

HOW DO I REGISTER MY PET?

Waukee residents can license dogs and cats online at petdata.com. Proof of rabies vaccination(s) will be required. The cost is \$15 each for altered pets and \$25 each for non-altered pets. City Code allows for up to three dogs and three cats per household.

HOW DO I GET A LIBRARY CARD?

Visit the Waukee Public Library at 950 Warrior Lane. Children (with adult present) must be 5 or older to sign up for a card. Adults must show photo IDs. Visitors from out of state living in the Waukee area for less than six months are eligible for a temporary library card. You can apply for a library card in-person or online at waukeepubliclibrary.org. If you apply online, you will still need to come into the library to pick up the physical card.

HOW CAN I CHECK WHAT MY PROPERTY TAXES ARE?

If you are a homeowner with property taxes not built into a mortgage, call the Dallas County Treasurer at 515-993-5808 to inquire about your respective property taxes.

IS THERE A CITY ORDINANCE ON MAINTAINING MY YARD?

Lawns and weeds should not be allowed to grow more than 8 inches high on developed property. Violations can result in a \$100 fine or the cost of City-hired maintenance, whichever is greater.

CAN I HAVE A FIRE PIT?

Residents may maintain a fire with untreated wood for recreational, religious, ceremonial, cooking, warmth or similar purposes. Burning rubbish/refuse, which includes yard waste, tires, garbage or plastics, is not permitted.

WHAT IS THE SNOW REMOVAL ORDINANCE?

If snow is forecast for Waukee, the Public Works Department will implement the City's snow ordinance and emergency parking ban. This means that all Waukee street parking is prohibited. Those in violation are subject to a \$25 fine and/or towing. Property owners are expected to remove snow, ice and accumulations from sidewalks within 24 hours after the end of a weather event. The City will issue fines beginning at \$50 for those in violation of the snow removal ordinance.

HOW MUCH GARBAGE AND RECYCLING CAN I PUT OUT?

Curbside solid waste and recycling pick-up both occur weekly at 7 a.m. or later. The number of items you may set out is not limited. If you have more than will fit into the receptacle, you may bag it and place it alongside. There are special requirements for appliances, furniture and other bulky items.

DOES WAUKEE HAVE AN ANNUAL CLEAN UP?

The City hosts the free Spring Clean-Up Week in late April or early May each year for curbside collection of bulky items on customers' typical trash collection days. The first Saturday in May, drop-off sites are designated as well for getting rid of hazardous materials, tires and appliances.

IS THERE YARD WASTE PICK UP?

Curbside yard waste pick up occurs every Monday beginning at 7 a.m. from April through November.

DOES THE CITY OF WAUKEE OFFER IRRIGATION METERS?

The City of Waukee offers two types of irrigation meters for purchase. Using an irrigation meter will save money from sewer charges on your utility bill if you frequently water your lawn or new sod or have a pool to fill. You'll submit meter readings online throughout the summer months.

- A portable irrigation meter that attaches to a 5/8-inch garden hose can be purchased for \$125 in the Utility Billing Office located at 230 W. Hickman Road.
- A permanent in-house irrigation meter can be installed by the Water Department after a plumber has appropriately diverted the plumbing. The typical use for this meter is if you have an underground irrigation system. Contact the Public Works Department at **515-978-7920**. The charge for this meter is \$314.18.

WHEN DO I NEED A BUILDING PERMIT?

Building permits are needed for new construction, renovations, fences, pools, etc. Visit [waukee.org/buildingpermits](https://www.waukee.org/buildingpermits) for the complete list of permits and applications or call Development Services, **515-978-9533**, or stop by that office at 204 W. Hickman Road (behind City Hall).

COMMON QUESTIONS

HOW DO I REPORT A CONCERN I HAVE TO THE CITY?

The best way to submit City-related concerns is through the Report a Concern web module at [waukee.org/reportaconcern](https://www.waukee.org/reportaconcern). Submit non-urgent concerns or complaints at that link, and they will be routed to the proper department.

HOW DO I REPORT AN URGENT CONCERN?

Concerns should be directed to the appropriate department during normal business hours. See the list of City department phone numbers. For barking dogs and noise disturbances, call **515-222-3321**. For power and streetlight outages, call **888-427-5632** or visit www.MidAmericanEnergy.com. For Public Works emergencies, such as gas leaks or water main breaks, on weekends and after 3:30 p.m. on weekdays, call **515-249-1212**. For a Police or Fire emergency, dial **911**.

IS THERE A CITY ALERT SYSTEM THAT I CAN SIGN UP FOR?

The City's website "Notify Me" tool, online at <https://www.waukee.org/list.aspx>, and the Waukee Police Department's Nixle account, online at <https://www.nixle.com>, allow City officials to send email and/or text notifications regarding general City news, event reminders, emergency alerts, road closure information, snow ordinance warnings and more. Visit those links to subscribe.

HOW DO I GET CITY NEWS AND INFORMATION?

The City of Waukee currently publishes three e-newsletters. Sign up for the general Waukee City Newsletter, the monthly Parks & Recreation News or the Economic Development Quarterly at <https://www.waukee.org/750/Newsletters-Notifications>.

Readers can also find relevant City news in the center spread of the monthly Waukee Living Magazine and bimonthly in MyWaukee Magazine, both of which are delivered to Waukee addresses free of charge. ■



EARLY DAYS OF WAUKEE

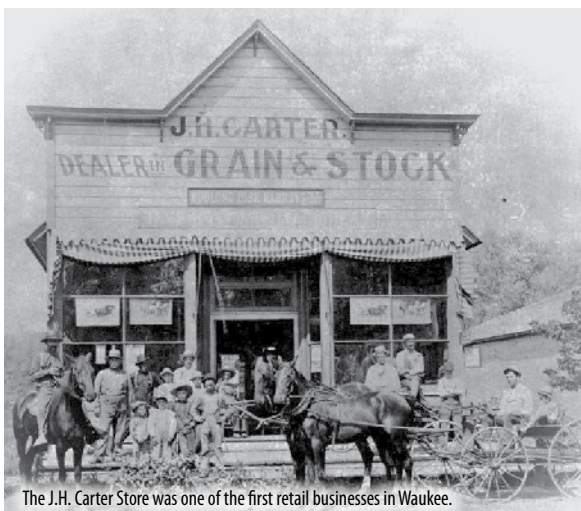
The Des Moines Valley Railroad was completed into Des Moines on Aug. 29, 1866. The railroad started from Keokuk in 1856, but, because of the Civil War, progress was slowed. Headquarters were in Keokuk, with D.W. Kilbourne serving as president and General Hugh Thompson Reid and Colonel Leighton listed as lessees.

These men visited Des Moines often to take care of the railroad interests. On April 13, 1869, a proposed route was announced in the *Iowa Daily State Register*. Leaving Des Moines, it was to enter Dallas County section 12, 78, 26 through section 2 and section 3 of that township and enter Walnut Township, section 34 and on into Greene County. New towns would be laid out.

On April 30, General Lewis Addison Grant and Major William Ragan and Co. bought the land around the railroad bed in Walnut Township, section 33, from Cyrus W. Fisher, the land on which the town of Waukee — originally called Shirley — was built. At the rate of “one mile a day,” the people of the land would soon be able to ship their farm products by rail to Des Moines and eastward.

In May 1869, the roadbed was laid, and the men working for Des Moines Valley Railroad were laying the rails. A coach car housed the men.

By June 2, it was reported that all the stations from Des Moines to the Northwestern Railroad line had been fixed and christened. First was Valley Junction; the second was Shirley, 9 miles from the Junction. The others were Dallas Center, Pierce’s Point, Perry, Rippey and Grand Junction at the Northwestern Road. Depots were to be erected as soon as a carpenter



corps could do the work.

Twenty-five miles of track had been laid by June 13, and the first regular train went out on the tracks June 15. Shirley had been laid off in lots. One house was already erected with more soon to come.

The city was originally named Shirley, but officials in Keokuk insisted that it should have an Indian appellation, and Waukee was chosen instead.

Progress of Waukee moved quickly, and a month later the depot was built, as were eight or 10 residences in 320 acres.

Coal was first discovered in Waukee in 1869. One of the better known mines, the Shuler Mine, was 387 feet deep, the deepest mine shaft in Iowa, and employed up to 500 people who were assisted by more than 30 mules. Many of the miners lived in parts of town called the “North Camp” and “South Camp,” which are located on what is now Alice’s Road.

Waukee was incorporated on Dec. 23, 1878. Its population in 1880 was 245. The 2020 census estimated population topped 24,000.

The Bank of Waukee was organized in April 1901.

The first telephone switchboard opened in 1902. School enrollment was 116 students

EARLY DAYS OF WAUKEE



in January 1907, and the town’s population had grown to 340 in 1910. The first mention of consolidating the mine school and the city school was made in March 1915.

Waukee businesses in the early 1900s included general stores, a grocery store, a

blacksmith, a hotel, barber shops, a candy shop, elevators, nurseries, drug stores, meat markets, a skating rink, a millinery shop, newspapers, car dealers and a variety of other businesses. ■

Source: Waukee Historical Society



PAINT SERVICES



BODY WORK



COLLISION REPAIR

DOES YOUR CAR HAVE DAMAGE FROM AN UNFORTUNATE ACCIDENT?

SINCE 1980



43 YEARS of SERVICE

CALL OLSON'S BODY & PAINT.
We specialize in providing affordable and timely autobody work when your car needs special attention.

Call today for a
FREE ESTIMATE
515-987-1735



555 W HICKMAN RD, WAUKEE

WAUKEE CITY COUNCIL & MAYOR



COURTNEY CLARKE
Mayor

cclarke@Waukee.org • 515-689-3240



ANNA BERGMAN PIERCE
abergman@Waukee.org • 515-229-0236



CHARLIE BOTTENBERG
cbottenberg@Waukee.org • 515-216-0727



LARRY R. LYON
llyon@Waukee.org • 515-987-5501



CHRIS CRONE
ccrone@Waukee.org • 515-971-4903



BEN SINCLAIR
bsinclair@Waukee.org • 515-991-2353

Regular City Council meetings are held the first and third Monday of each month at 5:30 p.m. at Waukee City Hall,

FUR BABY CARE

when you are gone!

- Puppy Care
- Dog Walking
- Pet Sitting
- Overnight Pet Care
- Pet Transport
- Pet Medical Administration

“ Our cat and house are well-taken care of while we are away. We can relax and enjoy our vacation. My cat loves Karla! He's happy and content when we get home, vs stressed and mad at me for leaving him. He lives like a king whenever we're away. - D.V., 7/22 ”

Fetch!

Pet Care of Metro Des Moines



**RESERVE A PET
SITTER TODAY!**

SCAN OR CALL OUR
LOCAL PHONE NUMBER!
(888) 229-5721

EASY SCHEDULING • GREAT AVAILABILITY • TRUSTED SITTERS



*Dream Homes
Matchmakers*



RE/MAX PRECISION

☎ 515.343.4354

✉ CHRISSI.REALTOR@GMAIL.COM

REAL ESTATE
TEAM FOR



SERVING CLIENTS THROUGHOUT THE DSM METRO &
SURROUNDING AREAS SINCE 2014



ALICE NIZZI PARK

715 Dellwood Drive

Alice Nizzi was a Waukeee community fixture who ran the revered Alice's SpaghettiLand restaurant throughout the mid-20th century. The design of this park is a nod to Nizzi's legacy and the rich history of Waukeee's coal mining camps. Constructed in 2020, this 3.17-acre neighborhood park features a spaghetti and meatballs-themed playground, rubberized surfacing, sidewalks, a shade structure and historical elements.

CENTENNIAL PARK

1255 Warrior Lane

Centennial Park offers a wide range of recreational opportunities. The 33-acre park is equipped with two sand volleyball courts, three ball diamonds, a 12-hole disc golf course, three playgrounds, one basketball court, a gaga ball pit, a creek, a covered bridge, one open shelter and one enclosed shelter. Plenty of open green space is available for playing soccer or enjoying a picnic. Centennial Park is also home to several community festivals each year.

FOX CREEK PARK

522 N.E. Westgate Drive

Fox Creek Park is Waukeee's third largest park (18 acres). Trails totaling 3/4 of a mile in length connect Grant Ragan Elementary to the surrounding neighborhoods. Visitors will also notice 2 acres of prairie plantings which aim to help the Monarch butterfly population increase. Other amenities at the park include the Fox Creek Splash Pad, the 80-person capacity Fox Creek Pavilion, a tennis court, four pickleball courts, play pods for different ages, parking and more.

G.E. DAVIS PARK

Walnut and Seventh streets

G.E. Davis Park sits in front of the Waukeee Community Center and honors George Edward Davis. Davis served as the mayor of the City of Waukeee for 30 years. The park is also home to the Waukeee Veterans Memorial, which was a gift given in 2017 from the Waukeee Leadership Institute. It honors all branches of the U.S. Military as well as the Waukeee Police and Fire departments.



GLYNN VILLAGE PARK

2255 S. Warrior Lane

The Glynn Village Park is a neighborhood park featuring a large playground structure with connecting towers and large slides, rubber surfacing, parking, a drinking fountain and seating.

GRANT PARK

605 S.E. Driftwood Lane

Grant Park is a 1.5-acre neighborhood park. It includes walking paths, playground equipment and a half-court basketball area.

HISTORIC TRIANGLE PARK

Ashworth Drive and Sixth Street

Triangle Park is a half-acre park nestled in the heart of downtown Waukeee featuring a large gazebo and more. The park space serves as host to many community events throughout the year, including the Farmers Market from June through September.

RIDGE POINTE PARK

655 S.E. Legacy Pointe Boulevard

Ridge Pointe Park is a 21-acre park that serves as a flat open field for soccer practice and open play. It features two playgrounds, a sand volleyball court, a walking path, a backstop, a pavilion (available to rent year round with heat and air conditioning) and a Little Free Library where you can share your books with others in the neighborhood.

SONGBIRD PARK

Behind 1070 First Place,
east of Southview Drive

Songbird Park is located behind a residence and has been recognized as a Backyard Wildlife Habitat and certified as such by The National Wildlife Federation. This 3-acre habitat is certified because of the conscientious planning, landscaping and sustainable gardening where wildlife may find quality habitat, food, water, shelter and places to raise their young. You can access Songbird Park from the concrete steps on the north side of the residence at 1070 First Place.

WAUKEE CITY PARKS

SOUTHFORK PARK

Southbranch Drive

Southfork Park is a 3-acre neighborhood park with amenities including an updated playground, the Gordon Christianson open shelter, picnic tables, a grill and benches. A Little Free Library was installed for neighbors to share and borrow their favorite books.

SUGAR CREEK PARK

2955 Serenity Drive

Sugar Creek Park is located near Serenity Drive and Ashworth Road near Sugar Creek Elementary. The 4.92-acre neighborhood park includes pickleball courts, playground equipment, a shelter and more.

TRAILSIDE DOG PARK

590 S.E. Brick Drive

The 4-acre site is located just east of Alice's Road, directly south of the popular Heart of the Warrior Trail. The Trailside Dog Park includes public restrooms, 21 parking stalls, separated large/small dog areas, a drinking fountain, dog waste stations, a shade structure, concrete walking paths and open green spaces. It also features a trail connection and bicycle racks. Learn more about purchasing a park pass online at www.waukeewi.gov/929/Trailside-Dog-Park.

TRIUMPH PARK

700 Douglas Parkway

The grand opening of Triumph Park, located adjacent to Waukee Northwest High School, was held in the spring of 2022. This 80-acre outdoor sports complex includes 12 softball/baseball fields, practice/warm-up spaces, a large pond, playground equipment, parking and other amenities. The park also includes a Miracle League of Waukee Ball Field and Play Area and an all-inclusive fishing pier.



Trailside Dog Park

WARRIOR PARK & SLEDDING HILL

1050 Fourth St.

Warrior Park is a 7-acre park with four ball diamonds, one playground, and a specially engineered sledding hill for winter activities. For easiest access and parking, turn off of Sixth Street next to the Waukee Cemetery.

WESTOWN MEADOWS PARK

2445 S.E. Willowbrook Drive

Westown Meadows Park is a neighborhood park that features a playground, paved walking paths, landscaping, parking and a restroom/storage room building. This modern park project also includes a water play feature and shaded picnic table areas.

WINDFIELD PARK

114 Windfield Parkway

Windfield Park is equipped with a full basketball court, a backstop for baseball or softball, age-appropriate play areas including an accessible swing, a Little Free Library and an open shelter. Walking and biking paths make it easier to connect from the park to the Heart of the Warrior Trail. ■



VisionBank®

NATIONAL
FIDIC



Home Sweet **LOAN**

Financing a home can be a long and complicated process. VisionBank will take the time to explain the process to you and get you into the mortgage that meets your needs.



Cliff Cunanan

*VP | Mortgage &
Consumer Lender*

Apply Online!

visionbank.com/CliffCunanan



NMLS#: 413665

(515) 986-5746 x 1612

cliff.cunanan@visionbank.com

Ladies DAY-OUT

IN WAUKEE!

START WITH A FULL-BODY WORKOUT!

CITYROW

1206 SE University Ave, Waukee | (515) 444-5769

Rowing and strength training combined into an intense 50 minute HIIT training workout that is safe and invigorating for all fitness levels. With a crew of top fitness professionals to motivate and challenge you, you'll get results while having a blast!

High intensity sweat + Low impact burn = Total body results!



FEEL REFRESHED!

LIVE HYDRATION SPA

9250 University Ave, Ste 110, West Des Moines | (515) 985-2676

Feeling Tired, Dehydrated and Achy? We can help!

We use intravenous (IV) fluids with minerals, vitamins and amino acids to alleviate unwanted symptoms.



TAKE A LEISURELY STROLL!

HEART OF WARRIOR TRAIL

Starts northeast of Waukee's Centennial Park for 3 miles

The Heart of the Warrior Trail helps to unify the Waukee community by providing a continuous trail through the core of established neighborhoods in the city.



Explore Waukee!

Stay close to home and have an invigorating day with friends and family shopping local with these businesses.

WALK WITH YOUR FUR FRIEND!

TRAILSIDE DOG PARK

590 SE Brick Drive, Waukee

The four-acre site, includes public restrooms, 21 parking stalls, separated large/small dog areas, a drinking fountain, dog waste stations, a shade structure, concrete walking paths and open greenspaces.



COMPLETE YOUR D.I.Y.

WAUKEE POWER EQUIPMENT

112 W Hickman Road, Waukee | (515) 987-2222

We have the right tools to tackle your DIY to do list.

If you need help in making your selection, call or stop in – we're always ready to help!



END THE DAY WITH A GOOD MOVIE!

THE PALMS THEATRES & IMAX

200 NE Westgate Dr, Waukee | (515) 444-5006

One of the largest IMAX screens in the Midwest, outfitted with dual Laser Projection System and 12 channel immersive sound.

UltraLux Loungers with optional heating settings in every auditorium



GOLFING



SUGAR CREEK MUNICIPAL GOLF COURSE 1505 Sixth St.

The City's nine-hole, par 34 golf course is typically open mid-March through mid-November, weather permitting. Sugar Creek is a great course for beginners and provides a challenge for seasoned golfers as well. A practice facility including a driving range, putting green and chipping area is also available. Sugar Creek offers leagues for men and women, instructional camps for junior and peewee golfers, and personal instruction for golfers of all ages. Tee times are recommended but not required. Daily hours are 7 a.m. to dusk. To schedule a tee time, call the Clubhouse at 515-987-5247, or go online to www.waukeewi.org/199/Sugar-Creek-Municipal-Golf-Course. ■

ICE RINK

Waukeewi's outdoor ice rink is located at Grant Park, 605 S.E. Driftwood Lane.

The Waukeewi Ice Rink is open during winter months when weather permits. This public rink, which measures 80 by 40 feet, was donated in partnership between the Iowa Wild and Wells Fargo in 2017.

During winter months, ice is open for hockey from dawn to noon and open skating hours are from noon to dusk. The rink is free for public use. A green sign will be posted at the gate to indicate that the rink is open. A red sign will be posted when the rink is closed. All skaters are advised that they are skating at their own risk. The rink is not supervised. ■

your neighbors in health

UnityPoint Clinic is here to keep you being you. Our family of services makes it easy for your family to get the care you need, close to home.

UnityPoint Clinic Express - Waukeewi
950 Hickman Road | 515-987-8256

UnityPoint Clinic Family Medicine - Kettlestone
1152 SE Ashworth Road | 515-264-2200

UnityPoint Clinic Family Medicine - Waukeewi
30 East Hickman Road | 515-987-3447

UnityPoint Health Physical Therapy - Waukeewi
818 SE Alice's Road | 515-987-4571

unitypoint.org

UnityPoint Clinic OB/GYN - Waukeewi
40 East Hickman Road | 515-263-9107

UnityPoint Clinic Pediatrics - Waukeewi
40 East Hickman Road | 515-987-6610



UnityPoint Clinic



QUALITY & CUSTOM

Dream Homes

SINCE 2005



CONTACT CHRISSI RIPPERGER TO TALK ABOUT
BUILDING YOUR DREAM HOME TODAY!



515.343.4354



CHRISSI.REALTOR@GMAIL.COM



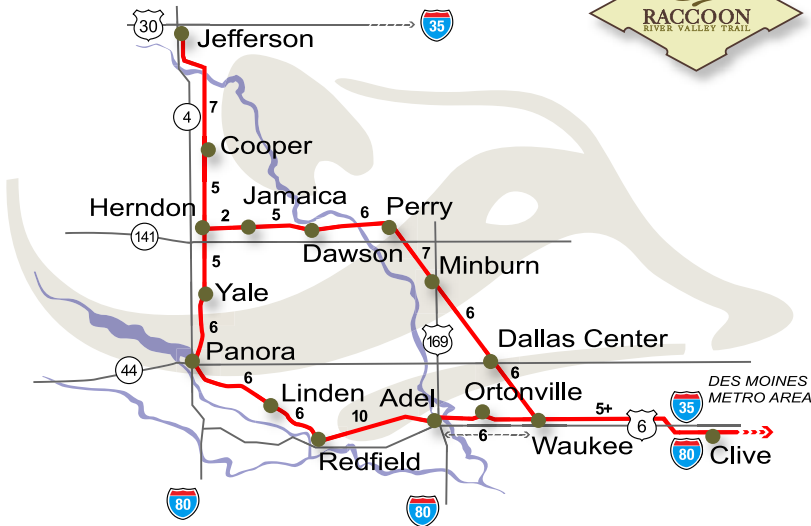
WWW.FRAMPTONHOMES.COM



15 Hands
REAL ESTATE

RE/MAX
PRECISION

The Raccoon River Valley Trail Map



TRAILHEADS: Parking and Permit tubes	
Waukee:	Jct. of Hwy. 6 & Co. Rd. R22 Restrooms, maps, information
Ortonville:	Jct. of Hwy.6 & Co. Rd. R16
Adel:	18th St. parking lot--restrooms maps, camping, information
Redfield:	Restored Depot N. of Co. Rd F60 - maps, water, restrooms, information, picnic tables, concessions
Linden:	Jct. of Co. Rd P30 and city park Restrooms, water, concessions
Panora:	SE 6th St. just off Hwy. 44 Picnic tables, water, restrooms (at nearby restaurant)
Yale:	SE edge of town off Co. Rd. F25 Restrooms, picnic tables, water, maps, information
Herndon:	Center of town, street parking. No city facilities.
Cooper:	Just off Co. Rd. E57, Center of town. In scale house of former elevator, -- water, restrooms
Jefferson:	Restored railroad depot on Co. Rd. E53 (E. Lincoln Way), east end of town -- restrooms, water, campground
Jamaica:	South end of business district, food establishment, convenience store, bar
Dawson:	At the restored Dawson Depot, center of town, restrooms and water there, cold drinks in machine across the street
Perry:	Center of town, adjacent to historic railroad caboose displayed there, restrooms and water
Minburn:	West side of U.S. Highway 169, middle of town, depot being restored, restrooms, food establishments, bar, water
Dallas Center:	Center of town, east end of the business district, restrooms, food and cold drinks at nearby businesses

LEGEND: 2 MILEAGE MARKER

●

 TRAILHEAD

○

 IOWA HIGHWAY

⬢

 U.S. HIGHWAY

⬢

 INTERSTATE HIGHWAY

Length:

 89 total miles, with 72-mile interior loop

Surface:

 Concrete or asphalt

Grade:

 1% to 2%

Fees:

 Daily: \$2.00/person per day
Annual: Jan-Dec \$10.00
Free: Age 17 and under
Free within city limits



Waukee offers 23 miles of winding trails that connect neighborhoods and residents to different parts of the community. City officials invest in trails and greenways in an effort to make it easier for residents to travel by foot or bike in their own neighborhoods and beyond, fostering a greater sense of community. This investment also aims to support active pursuits through recreational opportunities and safety, ultimately promoting a healthy lifestyle.

- **The Raccoon River Valley Trail** was designated as “One of Iowa’s Great Places” by the Iowa Department of Cultural Affairs in January 2015. This honor came with a \$200,000 state grant that contributed to the development, design and installation of Waukee Railroad Pergola - In the Shadow of the Rails, a public art piece that illuminates the Waukee Trailhead. This trail features 89 miles of paved trail beginning in Waukee, winding through 14 other communities and looping back to Waukee.

- The heart of the **Warrior Trail** starts northeast of Waukee’s Centennial Park and runs east-to-west through the city for 3 miles. The trail crosses Alice’s Road and

connects to Clive’s Greenbelt Trail in Lions Park. With the widening of Alice’s Road, a trail underpass was constructed to provide a safer passage for trail users.

- **Sugar Creek Trail** starts at the intersection of Warrior Lane and University Avenue and provides sweeping views of Waukee’s Sugar Creek Golf Course. The trail connects the southern Waukee neighborhood of Glynn Village to both Centennial Park and centrally located Waukee schools. A pedestrian bridge connects the Spyglass neighborhood to Centennial Park and beyond. The completion of the trail connects the previously isolated southern neighborhoods of Waukee to the central community.

- **Kettlestone Trails** in the Kettlestone Development invite walkers and bicyclists to enjoy the nearly 6 miles of trails that currently wind through Kettlestone. Trail users can cross safely via pedestrian underpasses beneath both Grand Prairie Parkway and Westtown Parkway. Currently, the trail system connects the east side of Kettlestone near Holmes Murphy to the Kettleview Development on the west side and up into the neighborhoods to the north. ■

CLUBS & ORGANIZATIONS

Clothing Closet

Westview Church
1155 S.E. Boone Drive, Waukee
515-987-5523
Hello@WaukeeChristianServices.org
waukeechristianservices.org/clothing-closet

Iowa State University Extension and Outreach Dallas County

28061 Fairground Road, Adel
515-993-4281
xdallas@iastate.edu
www.extension.iastate.edu/dallas

Dallas County Habitat for Humanity

515-218-9901
dallascountyhabitat.org

Jewish Federation of Greater Des Moines

33158 Ute Ave., Waukee
515-987-0899
info@jewishdesmoines.org
www.jewishdesmoines.org

Rotary Club of Waukee

Meets each Thursday at 7 a.m. at
Des Moines Golf & Country Club, 1600
Jordan Creek Parkway, West Des Moines
info@waukeerotary.org
www.waukeerotary.org

Waukee American Legion Post 737

Veterans meet the third Thursday at 7 p.m.
Auxiliary meets on the second Thursday at
7 p.m.
American Legion Riders meet the second
Wednesday at 7 p.m.
Veterans Hall, 410 Sixth St., Waukee
Riders: alr.waukee.737@gmail.com

Waukee Area Chamber of Commerce

208 W. Hickman Road, Waukee
515-978-7115
www.waukeechamber.com
info@waukeechamber.com

BRIAN, PEGGY AND THE STAFF WELCOME YOU
to Willard Garage, **your destination** for trusted automotive
maintenance, repairs, and safety.

TRUSTED AND PROFESSIONAL REPAIR SERVICES

BRAKES - SUSPENSION - ENGINES - ADVANCED DIAGNOSTICS SERVICES
OIL CHANGES - TRANSMISSION - TIMING BELTS - FLUID SERVICES
NAPA PREMIUM PARTS WITH NATIONWIDE WARRANTY

Drop in or call today for your next appointment
We look forward to getting to know you!

**Willard
Garage**

(515) 987-9025 | WILLARDGARAGE.COM
465 SE ALICES RD., SUITE G | WAUKEE



CLUBS & ORGANIZATIONS

Waukee Area Christian Services

Food Pantry, Community Garden,
Free Clinic, Clothing Closet, Seasonal
Programs
1155 S.E. Boone Drive, northwest entrance
of Westview Church, Waukee
515-987-5523
www.waukeechristianservices.org

Waukee Area Historical Society

info@waukeehistory.org
waukeehistory.org
[www.facebook.com/
WaukeeAreaHistoricalSociety](https://www.facebook.com/WaukeeAreaHistoricalSociety)

Waukee Betterment Foundation

waukeefoundation@gmail.com
www.waukeebetterment.org

Waukee Area Arts Council

www.waukeeartsfestival.org

Waukee Family YMCA

210 N. Warrior Lane, Waukee
515-987-9996
dmyymca.org/locations/waukee-family-ymca

Waukee Lions Club

Meets the first and third Thursdays of
the month at 6:30 p.m. at the Waukee
Community Center, 675 Walnut St.
www.e-clubhouse.org/sites/waukee
waukeelions@gmail.com
www.facebook.com/waukeelionsclub

Waukee Leadership Institute

waukeeleadership@gmail.com
www.waukeeleadership.org

Waukee Optimist Club

waukeeoimist@gmail.com
www.facebook.com/WaukeeOptimist ■

— WE OFFER MORE THAN CONVENIENCE —
WE DELIVER PEACE OF MIND

Offering more than just prescriptions is
nothing new to our team. Our philosophy
is to provide the BEST possible
healthcare to you and your family!



Online Refills
FREE Delivery
Med Packs

Diabetic Shoes
Immunizations
Rewards Program

LOCALLY OWNED AND OPERATED
COME BY & JOIN THE FAMILY!



We'll always make time for you.



515-987-8111 | 10 S. Warrior Lane, Waukee
www.MyMedicapPharmacy.com/waukee

ONE STOP SHOP

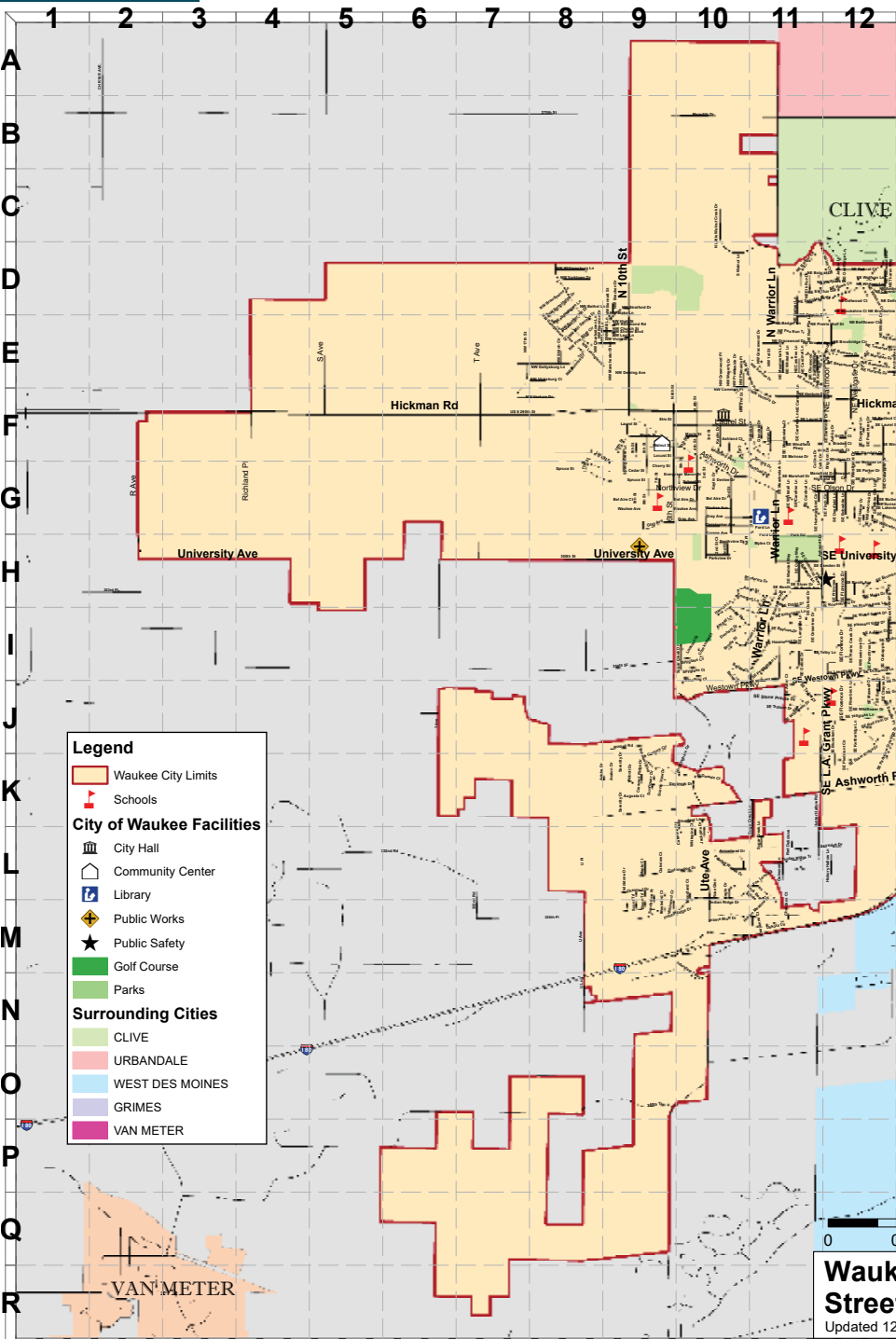
LIQUOR ★ BEER ★ WINE
TOBACCO ★ VAPORS

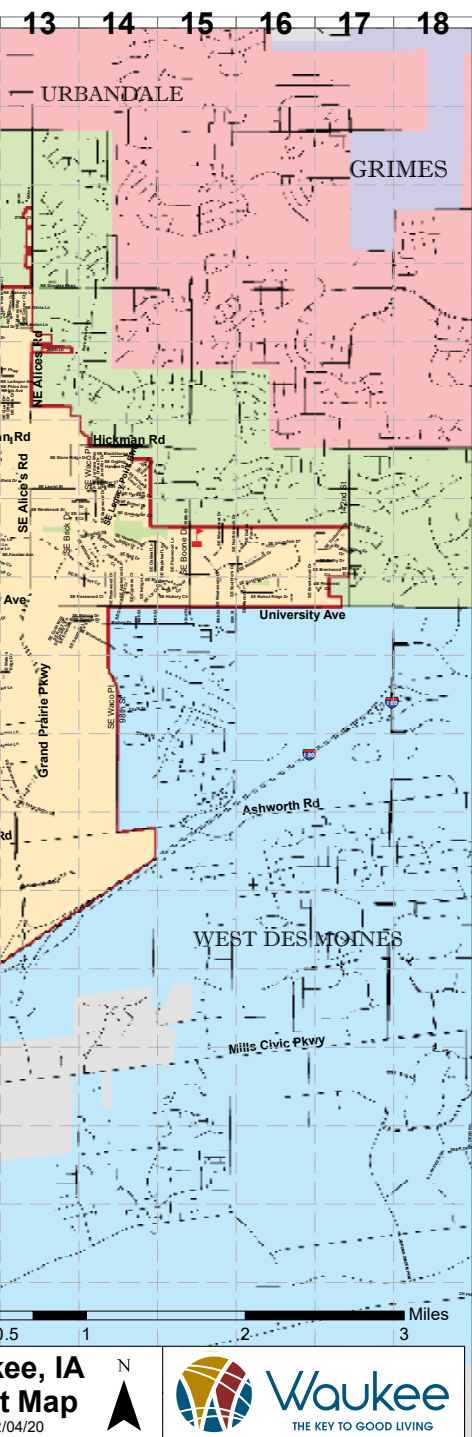


**We have all your FAVORITE BRANDS
in stock at GREAT PRICES!**

23 Carefree Lane ★ Waukee ★ 515-987-9718
OPEN DAILY ★ 9 AM - 10 PM

MAP OF WAUKEE





OPEN FISHING



City of Waukee staff members have been working closely with the Iowa Department of Natural Resources (DNR) to provide accessible, quality fishing opportunities in the Waukee community.

Three ponds in Waukee's Kettlestone Development are stocked with bluegill and largemouth bass; of those, the two located north of Holmes Murphy, the Kettlestone Commons Ponds, are stocked with trout. The Tallgrass Pond is located west of Grand Prairie Parkway and south of Tallgrass Lane. Anglers are encouraged to access these ponds via the Kettlestone Trails System.

The City also constructed an 11-acre pond and an ADA-compliant accessible fishing pier at Triumph Park.

Those wishing to buy a fishing license, explore maps, get Iowa fishing regulations and learn more can visit iowadnr.gov/fishlocal. In Waukee, residents and visitors can purchase fishing licenses in person at Fleet Farm, located at 1300 S.E. Kettlestone Blvd.

Per Iowa's fishing regulations, the daily limit for bluegills is 25. The daily limit for bass is three, but bass must be at least 15 inches in length to keep. Releasing bass back into the waterbody helps maintain healthy fish populations.

Kayaks, paddle boats and motor boats are not allowed in the Kettlestone Commons and Tallgrass ponds.

For a map of fishing spots, visit www.waukee.org/DocumentCenter/View/6987/Kettlestone-DNR-Stocked-Pond-Map. ■

CONDITIONING STRENGTH CARDIO

- ✓ Complimentary Childwatch
- ✓ Universal Membership
- ✓ 45-Minute Workout

Scan for a
7 DAY TRIAL!



burn boot camp®

650 Ashworth Drive, Waukee www.burnbootcamp.com

HEARTLAND CO-OP

Helping farmers produce & market profitably.

Gas, LP storage & delivery,
bagged feed including
pet food, lawn care products,
bird feed and supplies.

529 Ashworth Drive • 515-987-4511

1

2

HISTORIC

Wau



Specializing in workers' compensation, personal injury, wills, estate planning, divorce, criminal, real estate & small business

McKinney Law Offices, PC
A PROFESSIONAL LAW CORPORATION

515-987-4578 | 480 SIXTH STREET | WAUKEE
100 YEARS OF COMBINED EXPERIENCE

**ALWAYS FRESH,
ALWAYS LOCAL**

BEEF • PORK • POULTRY
CURED MEAT • SAUSAGES
COOKING ACCESSORIES
BEER • WINE

OLD STATION CRAFT MEATS

WWW.OLDSTATIONCRAFTMEATS.COM
450 6TH ST. WAUKEE • 515-452-0150

INTEGRITY
Financial Group

INSURANCE | ACCOUNTING | INVESTMENTS

520 Walnut St, Waukee
515-987-9598
www.integrityfinancialgrouppllc.com

THERE IS ALWAYS ROOM FOR Ice Cream!

Seating Room
for Everyone!
CATERING AVAILABLE

Follow us on Facebook!

530 Walnut St
Waukee

OPEN 7 DAYS A WEEK • NOON-9PM

Waukee Triangle

Historic Triangle Park is a half-acre park nestled in the heart of downtown Waukee. Surrounding by businesses and featuring a large gazebo and more. The park space serves as host to many community events throughout the year. Stop by today. There is something for everyone!



Visit the
**FARMERS
MARKET**

Triangle Park • 4-7PM
Wednesdays in June
through September

YOUR HOMETOWN HARDWARE STORE

Since 1878

Waukee Do it Best Hardware & Rent-it Center

515-987-4574 • 380 S. 6th Street
waukee.doitbest.com
FREE ship to store!

OPEN MON-FRI 7:30AM-6PM, SAT 7:30AM-5PM, SUN 11AM-4PM

OFFERING YOU THE BEST SOLUTIONS FOR YOUR CAR AND AUTO REPAIR NEEDS

Are you in need of an oil change, tires, brakes or general auto repair?

LAND MOTORS

395 Ashworth Drive, Waukee
515-987-8176

JULY 2023

Farmers Market

Wednesdays, through Sept. 27 • 4-7 p.m.

Historic Downtown Triangle

waukeedowntown.com

Independence Day Celebration

Monday and Tuesday, July 3-4

The Waukee community comes together for a celebration of the nation's independence with a parade, carnival, fireworks and other activities. www.waukee.org/777/Celebration-of-Independence

Dallas County Fair

Monday through Sunday, July 12-16

From livestock shows, a rodeo, contests and carnival to mutton bustin', watermelon feed and pedal tractor pull — and much, much more — you will find all the county fair staples and favorites at the Dallas County Fair, held at the fairgrounds in Adel. www.dallascountyfair.com/fair-schedule

Waukee Arts Festival

Friday and Saturday, July 14-15

The Waukee Arts Festival continues to grow. It features artist vendors, food trucks, beer garden, kids activities and concerts. waukeeartsfestival.org

Yoga in the Park

Saturday, July 8 and July 22, 8-9 a.m.

Join local, certified yoga instructors from SPENGA-Waukee for Yoga in the Park at Windfield Park Open Air Shelter, 114 Windfield Parkway. Bring a yoga mat or towel, water bottle and \$2 per person. For ages 8 and up.

AUGUST 2023

Public Safety Day

Tuesday, Aug. 1 • 5-8 p.m.

**Waukee Public Safety Building
1300 S.E. L.A. Grant Parkway**

The Waukee Police and Fire Departments will join forces again for Public Safety Day.

Take on a firefighter obstacle course and spray a real fire hose. Sit in a police car, and meet police officers. Enjoy food and a fun night of public safety activities.

Farmers Market

Wednesdays, through Sept. 27 • 4-7 p.m.

Historic Downtown Triangle

waukeedowntown.com

Movies in the Park

Centennial Park Open Air Shelter, 1255 Warrior Lane

Aug. 11, "Black Panther: Wakanda Forever" (PG-13)

Enjoy Hollywood's biggest hits under the stars with Movies in the Park! Movies in the Park is free and provides an abundance of entertainment. Showtime is at dusk (approximately 8:45 p.m.) in Centennial Park. Bring lawn chairs, blankets and refreshments.

Yoga in the Park

Saturday, Aug. 12 and 26, 8-9 a.m.

Join local, certified yoga instructors from SPENGA-Waukee for Yoga in the Park at Windfield Park Open Air Shelter, 114 Windfield Parkway. Bring a yoga mat or towel, water bottle and \$2 per person. For ages 8 and up.

SEPTEMBER 2023

Farmers Market

Wednesdays, through Sept. 27 • 4-7 p.m.

Historic Downtown Triangle

waukeedowntown.com

Yoga in the Park

Saturday, Sept. 9 and 23, 8-9 a.m.

Join local, certified yoga instructors from SPENGA-Waukee for Yoga in the Park at Windfield Park Open Air Shelter, 114 Windfield Parkway. Bring a yoga mat or towel, water bottle and \$2 per person. For ages 8 and up.

OCTOBER 2023

Beggars' Night

Oct. 30 • 6-8 p.m.

DECEMBER 2023

WinterFest

Friday, Dec. 1 • Downtown Triangle

Bring on the holiday cheer with your friends, family and neighbors at Waukee's free, annual WinterFest celebration held at the Downtown Triangle. Enjoy warm holiday treats, games and activities, a visit with Santa, tree lighting and much more. www.waukee.org/476/WinterFest

JANUARY 2024

FamilyFest

Saturday TBA

Check out Waukee area businesses, enjoy games and prizes, and jump on inflatables at this free event held every January. www.waukee.org/472/FamilyFest

MARCH 2024

Easter Egg Hunt

Saturday, March 30

The hunt starts at 10 a.m. at Centennial Park, rain or shine. Enjoy thousands of eggs and pieces of candy at this popular event. Watch for the special golden prize eggs. www.waukee.org/473/Easter-Egg-Hunt

MAY 2024

Waukee Firefighters' Pancake Breakfast

Saturday, May 13, 7-11 a.m.

Waukee Public Safety Building, 1300 S.E. L.A. Grant Parkway

JUNE 2024

Farmers Market

Wednesdays, through September • 4-7 p.m.

Historic Downtown Triangle

waukeedowntown.com

Waukee Palooza

TBA

The Rotary Club of Waukee's music festival is a fundraiser to support local nonprofit organizations. It's also a community celebration with music, food, drinks and a good time for a good cause.

BACoon Ride

Saturday TBA

Enjoy a 71-mile ride on the scenic Raccoon River Valley Trail featuring bacon specialty foods along the way at the annual BACoon RIDE starting and ending in Waukee. <https://baconride.com>

JULY 2024

Farmers Market

Wednesdays, through September • 4-7 p.m.

Historic Downtown Triangle

waukeedowntown.com

Independence Day Celebration

Wednesday and Thursday, July 3-4

The Waukee community comes together for a celebration of the nation's independence with a parade, carnival, fireworks and other activities. www.waukee.org/777/Celebration-of-Independence

Waukee Arts Festival

Friday and Saturday TBA

The Waukee Arts Festival continues to grow. It features artist vendors, food trucks, beer garden, kids activities and concerts. waukeeartsfestival.org

Dallas County Fair

TBA

From livestock shows, a rodeo, contests and carnival to mutton bustin', watermelon feed and pedal tractor pull — and much, much more — you will find all the county fair staples and favorites at the Dallas County Fair, held at the fairgrounds in Adel. www.dallascountyfair.com/fair-schedule ■

Mens

DAY OUT IN WAUKEE!

Waukee offers entertainment without leaving the neighborhood. These local businesses make your day exciting with friends and family.



GET A BREATH OF FRESH AIR

HEART OF WARRIOR TRAIL

Starts northeast of Waukee's Centennial Park for 3 miles

The Heart of the Warrior Trail helps to unify the Waukee community by providing a continuous trail through the core of established neighborhoods in the city.

BEFORE YOU HIT THE ROAD

AUTO ADDICTIONS

545 Highway 6, Waukee | 515-987-8468

We are your **#1 SOURCE** for ...
Wheels, Tires, Window Tinting,
Vinyl Wrap & Accessories!

We are dedicated to giving you the very best experience!



GET A BREATH OF FRESH AIR

TRAILSIDE DOG PARK

590 SE Brick Drive, Waukee

The four-acre site, includes public restrooms, 21 parking stalls, separated large/small dog areas, a drinking fountain, dog waste stations, a shade structure, concrete walking paths and open greenspaces.





LEVEL UP YOUR PROJECT!

WAUKEE POWER EQUIPMENT

112 W Hickman Road, Waukee | (515) 987-2222

The right tool for any season!

If you need help in making your selection, call or stop in – we're always ready to help!



DINE IN STYLE!

RUBE'S STEAKHOUSE

3309 Ute Ave, Waukee | 515-987-8237

Step into Rube's and indulge in the ultimate grill-your-own experience, where legendary steaks sizzle to perfection on open-hearth grills. Destination spot for experiential dining, premium beef, and for making unforgettable memories.

END THE DAY WITH A GOOD MOVIE!

THE PALMS THEATRES & IMAX

200 NE Westgate Dr, Waukee | (515) 444-5006

One of the largest IMAX screens in the Midwest, outfitted with dual Laser Projection System and 12 channel immersive sound. UltraLux Loungers with optional heating settings in every auditorium



PLACES OF WORSHIP

Abundant Life Church of Waukee

405 Maple St., Waukee
www.abundantlifewaukee.org

The Church of Jesus Christ of Latter-Day Saints

400 S.E. Pleasant View Drive, Waukee
local.churchofjesuschrist.org/en/us/ia/waukee/400-pleasant-view-drive?utm_source=gmb&utm_medium=yext

Fox Creek Community

33365 335th St., Waukee
515-987-6090
www.foxcreekcommunity.com

Grace Baptist Church

540 Walnut St., Waukee

Hilltop Church

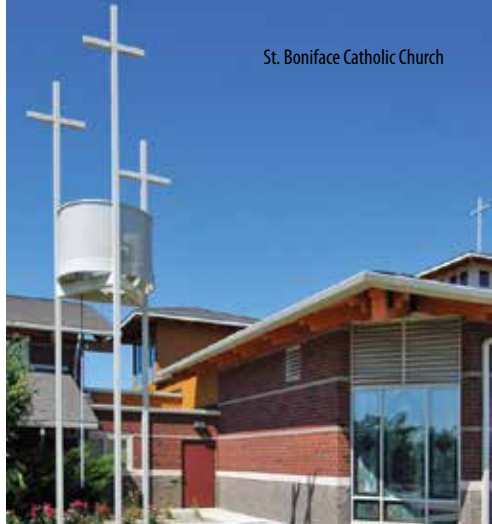
200 N.E. Westgate Drive
(The Palms Theatre & IMAX)
www.thisishilltop.church

Immanuel Lutheran Church

900 S. Warrior Lane, Waukee
515-987-4089
www.ilcwaukee.org/home

Lutheran Church of Hope Waukee

305 N.E. Dartmoor Drive, Waukee
515-264-2000
www.lutheranchurchofhope.org/waukee



St. Boniface Catholic Church

1200 S. Warrior Lane, Waukee
515-987-4597
stbonifacechurch.org

Reveal Community Church

205 N.E. Dartmoor Drive, Waukee
revealcc.com

Waukee Baptist Church

45 Fourth St., Waukee
515-987-1863
waukeebaptistchurch.com

Waukee Christian Church (Disciples of Christ)

29043 T Ave., Waukee
515-987-4937
www.waukeechristianchurch.com

DIRECT PRIMARY CARE INC. 24/7 URGENT CARE



515-650-4370



Exemplar.Care



7300 Westown Pkwy, WDM, IA 50266

PLACES OF WORSHIP

Waukee Community Church

215 N. Warrior Lane, Waukee

515-978-7732

www.waukeecommunitychurch.com

Waukee United Methodist Church

2075 S.E. LA Grant Parkway, Waukee

515-987-4531

www.waukeechurch.org

Westview Church

1155 S.E. Boone Drive, Waukee

515-987-3220

www.westview.org

Westwind Church

1115 S.E. Westbrook Drive, Waukee

515-987-2040

www.westwindchurch.org ■



Westview Church

WARRIOR LANES IS YOUR HOME FOR FUN IN WAUKEE!



PLAN YOUR PARTY TODAY!

Ask how you can **JOIN OUR TEAM!**

**OPEN BOWLING | GLOW BOWLING
BIRTHDAY PARTIES | YOUTH PROGRAMS
FOOD & BEVERAGE | LEARN TO BOWL
LEAGUE BOWLING | PRO SHOP**

WARRIOR LANES

Sunday Noon-8pm | Monday-Thursday Noon-9pm | Friday & Saturday Noon-10pm

ONLINE LANE RESERVATIONS WELCOME

190 SE Laurel Street
515.987.4840 • Waukee



Population continues to boom

New population data released by the U.S. Census Bureau estimates Waukee's population at 26,495 residents as of July 1, 2021. This increase equates to an 8.7% population increase over the course of 12 months, which is the highest percentage of growth by any city in Iowa larger than 10,000 people within that same period.

"The City annually projects a population increase of 6% as part of the budget approval process," said Waukee Mayor Courtney Clarke. "This is a conservative estimate of population growth, used as a guideline for projections, as well as planning for infrastructure improvements and resident amenities."

The growth totaled 2,555 new Waukee residents, or an average of seven new residents per day. In 2021, 1,761 building permits

were issued by the City's Community Services Department for a record-setting \$330.6 million in total valuation. Of those 2021 building permits, 831 were issued for single family, townhome and multi-family construction.

The City projects that the Waukee population could reach 40,000 residents by 2030.

Record 1,761 Building Permits in 2021

Both economic development and residential construction continue to thrive in Waukee. The City of Waukee's Community Development Department issued a record 1,761 building permits in 2021.

"When you look at Waukee's 74 percent population growth over the last decade, you can see the development numbers grow

Grow your savings with our

Certificates of Deposit (CDs)

View our competitive rates at:

LuanaSavingsBank.com/CD

LUANA
SAVINGS BANK

📞 515.987.2116

📍 16390 Holcomb Ct.
Clive, IA 50325

Across from Stivers Ford



Member
FDIC



WAUKEE GROWTH

rapidly right alongside it,” said Waukee Mayor Courtney Clarke. “The City invested nearly \$45 million in adding and improving infrastructure in 2021, knowing that we need the streets, sewers, water lines and more to support this expansion.”

The valuation of the building permits issued by the City in 2021 totals \$330.6 million, topping Waukee’s previous record-setting 2020 (\$245.7 million). It’s eight times higher than 2011’s number of \$42 million, set just one decade ago.

Of the 1,761 permits issued, a record 672 were for single-family housing, 153 were for townhomes, six were for multi-family developments and 19 were for commercial developments. The remaining permits fall into the “other” category, including projects such as additions, alterations, decks, etc.

The construction of 672 single-family homes in 2021 marks the highest single-family permit number in Waukee’s history, by far. The previous year’s record was 411. The 2021 single-family permit valuations totaled \$219.2 million, which accounts for nearly double last year’s total of \$116.6 million.

A full listing of the City of Waukee’s current development projects can be found at Waukee.org/development projects. To sign up for Waukee’s commercial development email updates, visit www.Waukee.org/econquarterly.

Some of the current development projects, which are in various stages, include Unleashed Pets, Kettlestone residential and commercial development, Waukee Towne Center Lake and Trail Improvements, Kettlestone Peak Townhomes, Williams Pointe commercial development, I-80 West Industrial site, KeeTown development, Fridley Palms, Chipotle, Central Plaza, McDonald’s, Alder Point, Indi Run, Fareway Stratford Crossing, Brandon Estates, Remington Pointe, New Waukee 6/7 Middle School, Higher Ground Education, Hamilton Ridge, KeeTown Loop - Aloft Hotel, Prairie Village Townhomes, Waukee Primary & Specialty Care Clinic, and more. ■

JOIN OUR TEAM! MAKE A DIFFERENCE

\$25-\$28/HOUR
(STARTING SEPTEMBER 1ST)

**BENEFITS
NO WEEKENDS**



**CALL 515-987-2788
SCAN AND APPLY TODAY**

**national
express¹⁰
school**



Waukee Public Library

950 Warrior Lane, Waukee

515-978-7944

www.waukeepubliclibrary.org

askme@waukee.org

Monday and Tuesday, 9 a.m. to 8 p.m.

Wednesday and Thursday, 9 a.m. to 6 p.m.

Friday, 9 a.m. to 5:30 p.m.

Saturday, 9 a.m. to 4 p.m.

Waukee Public Library

950

The Waukee Public Library is a vibrant place for community members to learn, work, play and explore. The library provides a broad range of materials, events, programs and services for the entire Waukee community and surrounding areas.

Library resources

In addition to the more than 30,000 books, audiobooks and DVDs on hand, the library has a wide variety of online resources you can access from the library, your computer or mobile device. With just your library card number, you have access to many beneficial resources:

- Explore 30,000 e-books and downloadable audiobooks
- Learn a new language
- Research your family tree
- Enhance your business and technical skills
- Receive book recommendations
- Research academic journals, books and encyclopedias
- Test prep, job search and create a resumé

Other services:

- Printing, copying and fax
- Free Wi-Fi and public computers
- Meeting and study rooms

Museums and art

- Art Gallery
- Coal Mine Museum
- Hal Manders Baseball Museum
- American Gothic Sculpture

Programs and events

- Story times for children
- 1,000 Books Before Kindergarten program
- STEM programs
- Teen programs
- Summer and winter reading programs
- Book clubs
- Speakers and presenters
- Downloadable magazines
- STEAM kits available for checkout
- WiFi hotspots for checkout
- Learning centers
- Art gallery
- Sensory spaces
- Adventure Passes

WAUKEE PUBLIC LIBRARY FRIENDS FOUNDATION

The City of Waukee funds the Waukee Public Library, but when the community wants more, unexpected needs arise, or when innovations in library systems require more capital than is available, the Friends Foundation helps. Donations are welcome. For more information, visit <https://wplff.org>. ■

ENJOY THE **SAVINGS!**



515-987-9604 • 50 SE Laurel St., Waukee

\$5 OFF
A \$25 PURCHASE

WAUKEE LOCATION ONLY. NOT VALID
WITH ANY OTHER OFFER. EXPIRES 6/30/24.



- ✓ Genuine Motorcraft Premium Semi Synthetic Oil & filter change
- ✓ Rotate and inspect 4 tires
- ✓ Check all belts and hoses
- ✓ Top off all fluids-Includes up to 5 quarts of Motorcraft oil
- ✓ Check air and cabin air filters
- ✓ Inspect brake system
- ✓ ZTest battery
- ✓ Automatic Car Wash

THE WORKS
FUEL SAVER PACKAGE

THE WORKS
FUEL SAVER PACKAGE
Stivers
Ford
LINCOLN
Waukee

\$10 OFF

Up to 5 quarts of oil. Gas engines only. Discount from retail price.
Cannot be combined with any other offer or coupon.
Taxes and shop supplies extra. Coupon must be presented at time
of write up. Not valid on prior services. Expires 12-31-23.



190 SE LAUREL STREET
515-987-4840 • Waukee
www.warriorlanes.com

FREE!

1 GAME OF BOWLING
UP TO \$6.25 VALUE

**NOT VALID WITH ANY OTHER OFFER. 1 COUPON
PER PERSON PER VISIT. EXPIRES 06/30/2024.**

Waukee
Do it Best **Hardware**
& Rent-it Center

515-987-4574

380 S. 6th Street, Waukee

waukee.doitbest.com

FREE ship to store!

\$5.00 OFF

ANY PURCHASE OF \$25 OR MORE. Regular priced items only. One coupon per household.



Hardware
& Rent-it Center

Expires June 30, 2023

515-987-4574
380 S. 6th Street, Waukee

1 single cut
HOUSE KEY

BRING IN THIS AD FOR DISCOUNT.
One coupon per household.

FREE!

Expires June 30, 2024



Hardware
& Rent-it Center

515-987-4574
380 S. 6th Street, Waukee



FREE
SKILLET

Present for one of our famous side skillets
FREE with your entrée purchase. Not valid
with other offers. Expires 6/30/24.

RUBE'S STEAKHOUSE - WAUKEE
3309 UTE AVE • 515-987-8237
WWW.RUBESSTEAKHOUSE-WAUKEE.COM

SAFESPLASH
SWIM SCHOOL
SwimLabs
Swim School **COMPETITIVE TRIATHLETE**

1175 SE University Ave, Waukee
515-755-7775
safesplash.com | swimlabs.com

FREE
TRIAL CLASS
WHEN YOU SIGN UP!
USE CODE "WAUKEE SOURCE"

Small Class Sizes • Competitive Stroke Analysis
Classes for Every Age & Skill Level • Warm Water

The Style **BAR**
Boutique

Tops | Denim | Jewelry | Shoes | Dresses
Bottoms | Jumpsuits | Accessories | Home Decor

37 NE Carefree Lane, Waukee
515-987-3360 • Shop in store or online

www.thestylebarboutique.com

20% Off
one item!

Cannot be combined with other discounts.

WAUKEE BY THE NUMBERS

Median age

33

2020 Total Valuation

**\$245.7
million**

Occupied
housing units

10,111

Median
household income

\$94,617

Illustration by Vecteezy.com



RESIDENTIAL



COMMERCIAL



REAL ESTATE SERVICES



ACCURATE DEVELOPMENT

EXPLORE.

For over 30 years, Kevin J. Johnson, President of Accurate Development, Inc. has been developing ground, building homes and commercial buildings in the Des Moines area. With an in-house management and construction company, we are able to create a great working relationship with our tenants.

**Scan to explore
our work.**



9500 University Ave #2112, West Des Moines 515-327-0800



Prairieview School

Administration Office

560 S.E. University Ave., Waukee

Phone: 515-987-5161

Superintendent: Dr. Brad Buck
waukeeschools.org

Brookview Elementary School

8000 E. P. True Parkway, West Des Moines

Stephanie Angelino, principal

Phone: 515-987-5166

Attendance: 515-987-2744

Eason Elementary School

605 S.E. Boone Drive, Waukee

Clint Prohaska, principal

Phone: 515-987-5200

Attendance: 515-987-2765

Grant Ragan Elementary School

645 N.E. Dartmoor Drive, Waukee

Matthew Robie, principal

Phone: 515-987-0435

Attendance: 515-987-2737

Maple Grove Elementary School

1455 98th St., West Des Moines

Dr. Graham Jones, principal

Phone: 515-987-3363

Attendance: 515-987-2748

Radiant Elementary School

5050 170th St., Urbandale

Allison Salow, principal

Phone: 515-987-2210

Attendance: 515-987-2746

Shuler Elementary School

16400 Douglas Parkway, Clive

Joel Fey, principal

Phone: 515-987-8597

Attendance: 515-987-2763

Sugar Creek Elementary

965 Ashworth Road, Waukee

Dr. Elizabeth Griesel, principal

Phone: 515-987-2786

Attendance: 515-954-4530

Walnut Hills Elementary School

4240 N.W. 156th St., Urbandale

Dr. Greg Carenza, principal

Phone: 515-987-3585

Attendance: 515-987-2742

Waukee Elementary School

850 Sixth St., Waukee

Nicole Johnson, principal

Phone: 515-987-5193

Attendance: 515-987-2762

South Middle School





Woodland Hills Elementary School

1120 S. 95th St., West Des Moines
Scott Shumaker, principal
Phone: 515-987-5196

South Middle School

2350 S.E. L.A. Grant Parkway, Waukee
Dr. Joe Spiess, principal
Phone: 515-987-3222
Attendance: 515-987-2785

Trailridge School

1455 Douglas Parkway, Waukee
Adam Shockey, principal
Phone: 515-987-5161

Waukee Middle School

905 S. Warrior Lane, Waukee
Susan Anderson, principal
Phone: 515-987-5177
Attendance: 515-987-2787

Prairieview School

655 S.E. University Ave., Waukee
Mark Stallman, principal
Phone: 515-987-2770
Attendance: 515-987-2757

Timberline School

2605 S.E. L.A. Grant Parkway, Waukee
Adam Shockey, principal
Phone: 515-987-9444
Attendance: 515-987-2764

Waukee High School

555 S.E. University Ave., Waukee
Cary Justmann, principal
Phone: 515-987-5163
Attendance: 515-987-2781

Northwest High School

655 N.W. 10th St., Waukee
Nick Ross, principal
Phone: 515-987-5181
Attendance: 515-987-2727 ■



Northwest High School

Waukee Community Schools Foundation

www.waukeeschoolsfoundation.org

Executive Director: Adrienne Towe, adrienne@waukeeschoolsfoundation.org

The Waukee Community Schools Foundation supports the schools by fulfilling its mission: Empower every Waukee student to achieve their aspirations by enhancing their educational experience.

Grants are available to all WCSD employees, students and registered parent organizations. The Foundation also funds Professional Development grants, which are distributed by district administration, and scholarships for seniors. The Waukee Schools Foundation Award for Teaching Excellence Innovation is also presented. It was created to recognize the work of one person within the Waukee district who elevates the standard and works to integrate and elevate education. This person goes above and beyond in the classroom and truly makes an impact on students. ■

Mainstream Boutique

NEW
NEW
NEW

Bringing to you more styles you will fall in love with.



9500 University Ave Suite 2105
West Des Moines, IA 50266

SAFESPLASH
SWIM SCHOOL

SwimLabs
Swim School COMPETITIVE TRAINING



**From bubbles to butterfly,
we have classes for every
age & skill level!**

Small class sizes • Warm water
Competitive stroke analysis

Free trial class when you sign up!
Use code "Waukee Source"

SafeSplash + SwimLabs Swim School – Waukee
1175 SE University Ave | safesplash.com | swimlabs.com

Bond update

Voters approved the 2020 Bond Referendum Sept. 8, 2020, with 88% of voters in favor. Voters approved the district borrowing \$205 million in general obligations bonds to fund a list of projects.

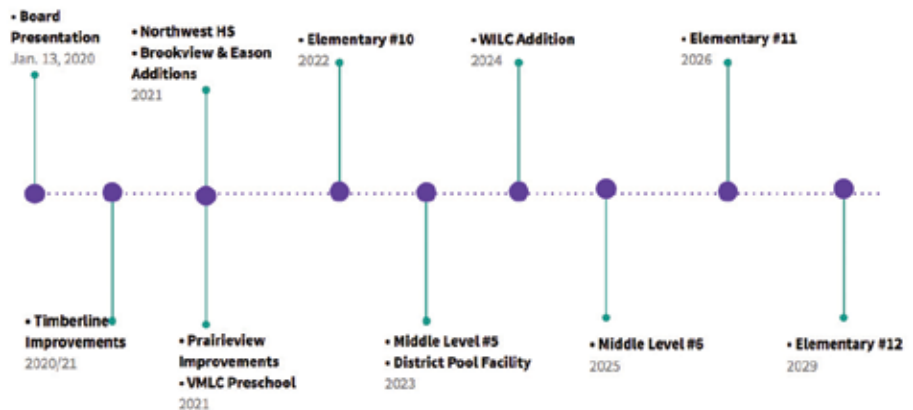
In January 2020, the Board of Education approved a 10-year Facility and Financial Plan. One of the key highlights in the plan is an intentional and strategic shift to a longer-term, systemic approach to facility planning. Guided by the expectations of the Board, the plan going forward is designed to address both new facility needs and ongoing support for the buildings that exist in the district.

The specific shift relates to addressing increasing aging infrastructure needs while at the same time preparing for current and future facilities and additions. In the past, the district could largely use a pay-as-you-go model as much of the funding was centered on building new facilities. That model worked well. This plan requires a bond referendum to secure the funds to pay for the plan so that other infrastructure monies can be directly committed to roof projects, interior improvements in existing schools, and parking lot repairs and replacements, for example. It also provides opportunities to place more and even better technology in the hands of students.

The bond issue approved by voters provides funds to build, furnish and equip two middle-level buildings, an elementary building and a pool athletic facility, as well as a number of additional improvement projects at existing buildings.

The current school tax rate is \$17.80 per \$1,000 of taxable valuation on a home within the district. Of that \$17.80, \$4.05 is appropriated to debt service. The Board of Education has set the debt service rate at the maximum (\$4.05). Therefore, the portion of the Waukee CSD rate that pays for the \$205 million bond referendum did not increase. The district is able to do this because of increasing property valuations within district boundaries.

Sugar Creek Elementary opened last year. Upcoming projects include a middle level building and district pool facility opening in 2023, WILC addition in 2024, another middle level building in 2025, and new elementary schools in 2026 and 2029. ■



ASSISTANCE PROGRAMS

WAUKEE AREA CHRISTIAN SERVICES (WACS) PROGRAMS

waukeechristianservices.org

FREE HEALTH CLINIC

waukeechristianservices.org/health-clinic/
1155 S.E. Boone Drive, Waukeez

515-987-5523

Monday: 5:30-7 p.m.

Chiropractic and Physical Therapy on select dates

The Free Health Clinic is a nonprofit outreach that serves the health needs of the uninsured and under-insured members of the community. Its mission is to provide health care for physical, emotional and spiritual health. All people are welcome to receive services no matter where they call home. Assistance is private and will remain confidential. The WACS Free Health Clinic is a member of Free Clinics of Iowa. Walk-ins welcome or call 515-987-5523 to schedule an appointment.



Available Services

- Illness and minor injury care
- Well-child exams
- Sports and school physicals
- Employment physicals
- Chronic disease management
- Diabetes – glucose testing
- Patient assistance program enrollment
- Physical therapy
- Chiropractic care

PLAY THE DAY AWAY!

Indoor dog park/Event center • Boarding • Newly expanded daycare
Pet supplies • DIY bathing • Online retail store • Professional bathing + Nail trims

Run around and meet new friends!
stylinpawssalon.com

Stylin PAWS PLAY PLACE

Stylin Paws Play Place: 3901 121 St. Urbandale • 515-720-7909
Stylin Paws: 2180 NW 156th St. #105, Clive • 515-518-5913



Have your next event here!

EAT • DRINK • RELAX • PLAY



Fast Lunches & Breakfast Saturday & Sunday 9am - 1pm
**Patio Music Wednesdays, Trivia Thursdays,
Karaoke Fridays, Live Music Saturdays**
LARGE PATIO & PLENTY OF BIKE PARKING

50 SE Laurel, Waukeez • 987-9604 • www.mickeyswaukeez.com

ASSISTANCE PROGRAMS

WACS FOOD PANTRY

Westview Church
1155 S.E. Boone Drive
waukeechristianservices.org/food-pantry
515-987-5523
hello@WaukeeChristianServices.org

Hours for Food Pantry and Anytime Food

Monday, noon to 6 p.m.
Tuesday-Thursday, 9 a.m. to 3 p.m.
Saturday, 9-11 a.m.
Closed on Friday and Sunday

Food pantry services are available to all Dallas County residents in need of assistance. First-time visitors will go through a brief check-in process. Clients must live in Dallas County or Waukee School District, bring identification for each member of the household and bring proof of residency (utility bill or rental lease agreement). Bring reusable bags for food.

Anytime Food Room

The Anytime Food Room includes food and other items acquired through the food rescue program. It provides clients with another opportunity for additional food outside of their monthly visit. Food items vary, but typically include bread, pastries, produce, sandwiches and other shelf-stable items. Clients can take advantage of this offering one time per day during regular Food Pantry hours. Bring your own bags for Anytime Food.

THE CLOTHING CLOSET

Westview Church, 1155 S.E. Boone Drive
waukeechristianservices.org/clothing-closet
515-987-5523
hello@WaukeeChristianServices.org
Families with children ages 4–14 can shop in a boutique-like setting once a month to pick out both new and like-new clothing items free of cost. Contact information, hours, guidelines and requirements are same as for the Food Pantry.

Waukee's new premier boutique!



CHECK OUR TRENDY STYLES!

The Style BAR Boutique

Tops | Denim | Jewelry | Shoes | Dresses
Bottoms | Jumpsuits | Accessories | Home Decor

37 NE Carefree Lane, Waukee
515-987-3360 • Shop in store or online



Waukee Wellness & Chiropractic, P.C.

Chiropractic Care • Massage Therapy
Mental Health Therapy • Nutrition and Fitness Counseling

AWARD-WINNING CHIROPRACTIC CARE

for the Whole Family

SPORTS INJURIES
OCCUPATIONAL INJURIES
STRESS HEADACHES
CHILDREN



MOST INSURANCES ACCEPTED

www.waukeewellness.com
710 SE Alices Road • Waukee • 515-978-6661

2023-2024 THE WAUKEE SOURCE 47



COMMUNITY GARDEN

waukeechristianservices.org/community-garden

Located on the grounds of Westview Church in Waukee, The Fruitful Vine Garden was started in 2009 with the goal of providing fresh produce to clients of the WACS Food Pantry. The garden is a collaborative effort of volunteers, including individuals, families, community groups, and members of the Dallas County Master Gardeners Association.

During the growing season, clients are eligible to visit the garden once a week to receive a “share” of fresh produce based on family size and availability. Before going to the Community Garden, clients must first check in at the Food Pantry.

The community garden is entirely maintained by volunteers. All types of volunteers are needed, and serving in the garden is a great way to give back. You can “adopt” a section of the garden to maintain or occasionally come out and water the plants. Please consider signing up to get involved.

SEASONAL PROGRAMS

waukeechristianservices.org/seasonal-programs

WACS also offers seasonal programs such as Easter baskets, school supplies, Thanksgiving meals, and Christmas food boxes and gifts. Apply online.

PROGRAMS FOR CHILDREN

WACS provides children and students with nutrition to help them develop, learn and thrive. When children are nourished, they can focus on playing, reading and learning — not worrying about the source of their next meal.

WACS has baby supplies depending on availability.

For information on the School Snack Packs program, speak with your student’s school counselor or talk to a staff member at WACS.

WACS also provides birthday party bags for ages 2-12 to help you celebrate a child’s upcoming birthday. Connect with a staff member during your Food Pantry intake process to learn more. Depends on availability.

OTHER COMMUNITY RESOURCES

For information on other assistance programs in the community and county, visit waukeechristianservices.org/additional-resources. Information on these programs can be found there:

- Iowa 2-1-1
- Dallas County General Relief
- Dallas County Resource Directory
- Crisis Intervention and Advocacy Center
- Polk County General Assistance
- InnerVisions Healthcare
- Health Navigation – Dallas County
- hawk-i ■



IT'S ABOUT. *community*

COMMUNITY STATE BANK (CSB) is a Des Moines metro bank with deep roots in the local community since 1902.

When you bank with CSB, your money stays in Central Iowa - supporting families, businesses, and projects in our community.



community state bank

BankCSB.com | 515.331.3100 | **SINCE 1902.**

Member FDIC.

NUMBERS TO KNOW

Waukee City Hall , 230 W. Hickman Road	
General information.....	515-978-7900
Development services (building permits and zoning)	515-978-9533
Utility billing (gas and water set-up)	515-978-5502
Emergency (gas smell, no water, etc.)	515-249-1212
Garbage and Recycling (ASI)	515-964-5229
Pet Licensing (PetData)	855-585-8157
Waukee Parks & Recreation , 805 University Ave.	515-978-0007
Waukee Public Safety Building , 1300 SE L.A. Grant Parkway	
Police and fire departments	Emergency: 911
.....	Non-Emergency: 515-222-3321
Police office.....	515-978-7979
Fire office	515-978-7998
Waukee Public Works Building , 805 University Ave.	
Gas and water meters, pilot light out and streets.....	515-978-7920
Waukee Public Library , 950 Warrior Lane	515-978-7944
Sugar Creek Golf Course , 1505 Sixth St.	515-987-5247
Waukee Chamber of Commerce , www.waukeechamber.com	515-978-7115
Waukee Community School District , www.waukeeschools.org.....	515-987-5161
Waukee Post Office , www.usps.com	515-987-5409
Dallas County , www.co.dallas.tx.us	
Auditor.....	515-993-4750
Driver's licenses	515-993-6992
Motor vehicle registration	515-993-5812
Recorder.....	515-993-5804
Sheriff	515-993-4771
Treasurer (property tax information)	515-993-5808
Voter registration	515-993-4751
Iowa One Call , www.iowaonecall.com check before you dig	811
MidAmerican Energy , www.MidAmericanEnergy.com.....	888-427-5632



FARM BUREAU
FINANCIAL SERVICES

Auto | Home | Life | Annuities | Business | Farm & Ranch

PATRICK ST. JOHN

319-551-1180 (Cell) • 470 Hickman Road, Waukee



Farm Bureau Property & Casualty Insurance Company,* Western Agricultural Insurance Company,* Farm Bureau Life Insurance Company*/West Des Moines, IA.
*Company providers of Farm Bureau Financial Services PC044 (7-16)

BREAKFAST NEVER

looked so fresh.

EVERY DAY

6AM TO 2PM

Try our **NEW** breakfast menu, made with only the freshest, highest-quality ingredients. What we bring to the table is fresh, made-to-order breakfast using only the highest-quality ingredients around.

Our new breakfast menu features everything from classic skilletts to apple pie pancakes, morning cocktails to stuffed French toast, omelets to waffles, platters and more.

breakfast



cocktails



HyVee
EMPLOYEE OWNED

WAUKEE HYVEE
1005 E. Hickman Rd, Waukee
WE LOOK FORWARD TO SEEING YOU!





REPEATEDLY RECOGNIZED FOR A
SUPERIOR SALES
AND SERVICE EXPERIENCE

Iowa's #1 Ford
LINCOLN Dealer*

NEW, USED, AND COMMERCIAL VEHICLES



USED CAR SUPERSTORE



LINCOLN
CERTIFIED PRE-OWNED



SERVICE & PARTS "OPEN Late"
& ON SATURDAYS.

HOURS: 7AM-7PM (MONDAY-FRIDAY)

QUICKLANE OPEN SATURDAY 7:30AM-12 NOON

Quick Lane
TIRE & AUTO CARE



STIVERS 2023 FORD BRONCO



ALL MAKES COLLISION CENTER

FREE ESTIMATES

WE GUARANTEE OUR WORK
FOR AS LONG AS YOU OWN YOUR CAR.

EXPERT REPAIR. Rental cars onsite.



Scott Politta, President
Stivers Ford Lincoln of Iowa



STIVERSFORDIA.COM 1.800.747.2744



ON THE WAUKESHA SIDE OF I-94 EXIT 48

*Sales ranking based on car and truck sales report of the Kansas City Region of Ford Motor Company and Lincoln Motor Company for 2022