



live work play

Clive Chamber
of Commerce

www.clivechamber.org

PSRST STD
ECRWSS EDM
U.S. POSTAGE
PAID
BIG GREEN
UMBRELLA MEDIA
POSTAL CUSTOMER
BIG GREEN
UMBRELLA MEDIA
8101 Birchwood Ct. Ste. D
Johnston, Iowa 50131

It's about your life, not just your money.

DREAM. PLAN. ENJOY.



INVESTMENT • LIFE & HEALTH • SERVICES



Retirement Solutions of Iowa LLC.

www.rsiowa.com 515-215-7114 105 W Salem Avenue, Indianola



Andrei Murphy,
President

**Securities offered through Brokers International Financial Services, LLC, Member SIPC. Brokers International Financial Services, LLC, is not an affiliated company.



Chamber Board of Directors.....	4
Membership Benefits.....	5
Community Events.....	6
What Chamber Members are Saying.....	8
Why Businesses Choose Clive.....	9
President's Club Grants.....	10
Mayor & City Council.....	12
City Amenities.....	13
Faith.....	15
New to Clive?.....	16
Civic Organizations.....	17
Schools.....	18
Map.....	20
Chamber Directory.....	22

Published for the Clive Chamber of Commerce by:



Big Green Umbrella Media
515-953-4822
8101 Birchwood Court, Suite D
Johnston, Iowa 50131
www.biggreenumbrellamedia.com

Publisher & PresidentShane Goodman
Vice President.....Jolene Goodman
Advertising Sales..... Kristine McDonald
Design Manager..... Celeste Tilton
Graphic Designer Jayde Vogeler
Digital..... Beckham Miller
Business Office..... Brent Antisdell
Distribution Manager Mike Chiston

Information supplied by the Clive Chamber of Commerce and the City of Clive. A copy of this publication is mailed to every address in the 50325 ZIP code. Please report any errors or omissions to 515-222-5295. Contents © 2023 Big Green Umbrella Media, Inc. All rights reserved. Nothing may be reprinted in whole or in part without permission of the publisher.



FRANKA
pizzeria

12695 UNIVERSITY AVE. STE 100
FRANKAPIZZERIA.COM



ST KILDA
CAFE & BAKERY

12695 UNIVERSITY AVE. STE 140
STKILDADSM.COM



FAREWAY®
MEAT & GROCERY

10151 UNIVERSITY AVENUE • CLIVE

STORE 515-223-0164 • MARKET: 515-223-0539
FIND OUR WEEKLY AD, PROMOTIONS, RECIPES AND MORE AT

WWW.FAREWAY.COM Apple Pay YouTube Facebook Pinterest Instagram

OPEN 8AM TO 9PM MONDAY-SATURDAY | CLOSED SUNDAY
Heath Duerksen, Store Manager | Bill Snook, Market Manager

CLIVE CHAMBER OF COMMERCE BOARD OF DIRECTORS

Executive Board



Emily Bialas
President
MercyOne
Health and Fitness



Lu Anne Gafford
Vice President
Life 107.1



Nikki Nigg
Secretary
MercyOne Clive
Rehabilitation Hospital



Chuck Jones
Treasurer
Charles Jones, CPA



Staci Fjelland
Past President
Meadowview of Clive

Board of Directors



Erik Anderson
Electronic Office



Emily Bannister
Accelerate
ActionCOACH



Robert Doheny
Next Generation
Realty



Ahmed Ibrahim
NCMIC



Tony Leo
Big Brothers
Big Sisters



Angie Sprenger
Luana Savings Bank

Liaisons & Staff



Pete De Kock
City of Clive



Joel Fey
Waukee Community
Schools



Shane Christensen
West Des Moines
Community Schools



Dave Hellstern
Sullivan & Ward, P.C.



Kristy Schmidt
Executive Director



Edye Beckerman
Membership
Coordinator

A message from the president

Hello, 2023! We are incredibly enthused to see what the new year has in store for us. Despite plenty of economic uncertainty, we ended 2022 by welcoming 56 new members and retaining 86% of our current memberships. We had record participation at our community events such as Ladies Night Bingo and our Annual Golf Outing, which sold out. We added a new event, "Business Trick or Treat," and had more than 350 trick-or-treaters. We have started the year by making some revisions to our five-year strategic plan in response to the changing needs of our chamber and community businesses. We will continue to focus on our top key items to help our chamber become more integrated in the community and create a better business landscape for all our current and future businesses. With several exciting events planned for 2023, we hope to have you join us as we celebrate our wonderful business community. Thank you for all your continued support!

Emily Bialas
2023 Board President
Clive Chamber of Commerce



15 MEMBERSHIP BENEFITS



1 Member to Member Networking	2 Free Ribbon Cutting and Promotion	3 Recognition of Achievement
4 Free Directory Listing	5 Informational Events	6 Referrals to Potential Customers
7 Free Job Postings	8 Leadership Opportunities	9 City and State Advocacy
10 Greater Des Moines Partnership Membership	11 Sponsorship Opportunities	12 Access to Clive Elected Officials
13 Connection to Community Events	14 Volunteer Opportunities	15 Free Website Presence

Understanding what really matters **takes time.**

For a century, we've focused on meeting the needs of our customers and communities by getting to know them. We take the time to listen and ask questions to develop better ways to serve them.

Though times have changed, one thing has remained the same – our commitment to providing **meaningful, personalized support** for every customer and every community, now and every day forward.



GreatSouthernBank.com



PARTY LIKE YOU'RE GETTING Married this Year!

#partywithcomplete

Is it your turn? Contact us to mix and match our services to meet your needs and budget. Let's get this party planned today!

515.266.1355 • Sue@CompleteDesMoines.com

COMPLETEDESMOINES.COM

PHOTOGRAPHY • VIDEOGRAPHY • DJ • PHOTO BOOTH • COORDINATION

COMPLETE
weddings + events

COMMUNITY EVENTS



FOOD TRUCK FRIDAYS

Come unwind with music, food and fun at Food Truck Fridays, presented by Clive Parks and Recreation and the Clive Chamber of Commerce. Bring the whole family — the park has three playgrounds and green spaces.

2023 dates: May 12, 19, 26, June 2, 9, 16, Aug. 25, Sept. 8



CLIVE FESTIVAL

As one of the best community festivals in the Des Moines metro area, the Clive Festival builds upon a nature theme to celebrate our beautiful Greenbelt Trail. Our schedule is packed with activities for both kids and adults to provide a well-rounded event for the entire community. **2023 dates:** July 21 and 22.



LADIES NIGHT BINGO AND DESIGNER HANDBAG FUNDRAISER

This is not your grandma's bingo night! We will have wonderful prizes for each round of bingo and also a raffle for beautiful, authentic designer handbags. Funds raised will be used to create a college scholarship for a high school graduate from both the West Des Moines and Waukee school districts.

2023 date: Sept. 28.



BUSINESS TRICK OR TREAT

All ghosts and goblins are invited to wear costumes and collect yummy treats from local businesses. Enjoy an evening of free trick or treating and meet some of the amazing businesses right here in our community.

2023 date: Oct. 19



MAYOR'S TREE LIGHTING

Join us for the annual Mayor's Tree Lighting for the City of Clive. The family-friendly night will include a tree lighting, hands-on crafts, hot chocolate, cookie decorating, an arrival and visit from Santa, and much more!

2023 date: Dec. 3

Breaking down retirement barriers

What's keeping you from retirement? Are you wondering if you have enough money saved? Are you concerned about the cost of health care? Or perhaps inflation, stock market volatility and borrowing costs make you wonder if this is the right time. Coupling these concerns with the lack of a customized, written retirement plan can make these retirement barriers unbreakable.



If you are ready to retire but unsure if you can, you can break down barriers by seeking answers to your questions. Retirement does not have to be a guessing game. A retirement planner can help you decide if you have enough saved for retirement, how you'll pay for health care, build a recession-resistant plan and more.

We do this by helping families and individuals develop a plan that breaks down the barriers, answers their questions and addresses their uncertainties. The plan addresses the six components of retirement: lifestyle, income, investment, tax, health care and legacy.

We start with a conversation about how you want to spend your time in retirement. Do you want to travel, spend the winter

in Florida, or be near grandkids? Once you know how you want to spend your time, we can work on developing a plan to fund your retirement vision. Then we can take inventory of retirement income sources — don't forget about Social Security and pensions — to create a retirement income plan. It's not just the sum of these sources that can help answer your questions; it's developing a plan to spend them and do it in a way that lowers your tax bill.

The cost of health care can feel like a big barrier to retirement, but it can't be ignored. The process includes helping you elect Medicare, make sense of the supplement choices, and develop a plan to pay for long-term care if you need it. Then there is your legacy. If your will, trust or beneficiary designations are not up to date, this can be a barrier to leaving your wealth to loved ones or charities.

When we write this all out for people, we can show them how and why they have enough money to retire, taking the uncertainty out of the next 20 or 30 years of their life. Sometimes they learn that they need to make some changes before they can retire; it's hard to hear, but better to know now than 10 years into retirement.

This could be the year to crush those retirement barriers and start living out your retirement vision.

Information provided by Loren Merkle CFP®, RICP®, CFF, Merkle Retirement Planning, 1860 S.E. Princeton Drive, Grimes, 515-278-1006.

WHAT DO YOU REALLY KNOW ABOUT INFLATION?



Can you get a perfect score?
Put your knowledge to the
test with this short quiz.

Merkle
RETIREMENT PLANNING

Investment Advisory Services offered through Elite Retirement Planning, LLC. Insurance Services offered through MRP Insurance, LLC.

WHY THE CLIVE CHAMBER?



“ The Clive Chamber welcomed me to the city with open arms. As a new business owner in Clive, I felt it was important to get involved in the community and meet new like-minded business owners. The Clive Chamber offers plenty of opportunities for both. I quickly built great relationships through the Chamber and love meeting new members at every event! ”

EVAN HATAWAY

Hataway & Associates, LLC

“ Joining the Clive Chamber was a great move for our company. They are very welcoming and strive to help our business grow and succeed. The events that we have been involved in over the past year have been amazing, and we cannot wait to see what the future holds for the Clive Chamber! ”

EMILY SIMMONS

Schlievert Plumbing, Inc.



“ Nebraska Furniture Mart is proud and thankful to partner with the Clive Chamber of Commerce. They have been a great resource on business and volunteer projects as we continue to submerge ourselves in the community. We enjoy the opportunities to sponsor and participate in activities like Ladies Night Bingo and the Golf Outing. Honored as the Business of the Year in 2019, we were incredibly humbled at the Chamber members' support. We look forward to continuing our great relationship in the years to come! ”

TIM MULLEN

Nebraska Furniture Mart

“ The Clive Chamber has been an excellent source to Bankers Trust for assisting our business with having more visibility in the Clive community. The endless networking opportunities that are provided have been an amazing way to meet new people and get connected with small business owners in Clive. ”

SANDY SEGURA

Bankers Trust



OUR MISSION

To champion a prosperous business community by
serving as a collaborative force for members and partners.

WHY BUSINESSES CHOOSE CLIVE



Location, Location, Location

Businesses benefit from Clive's centralized location and easy access to two major interstate systems (Interstates 235 and 80) and several main transportation corridors including University Avenue, Hickman Road, and N.W. 86th Street. Each of the main corridors carries between 25,000 and 30,000 vehicles daily. Clive also maintains two of the busiest intersections in the Des Moines metro area. The N.W. 100th Street/University Avenue and Hickman/N.W. 86th Street intersections carry approximately 100,000 vehicles daily, making Clive a primary destination for local and regional consumers.

Proximity

Historically, Clive served as a primary point for the railroad and coal mining areas. Today, its prime location is easily accessible from all directions of the Des Moines metro area as well as numerous regional metropolitan areas such as Chicago, Minneapolis/St. Paul, Kansas City, Omaha and St. Louis.

Opportunity

Clive businesses enjoy one of the lowest tax rates, and the community has the highest per capita income level in the metro area. Businesses seeking to cap their expenses and enhance their profit margins through a readily available customer base find Clive to be a perfect fit for their needs.

Qualified Workforce

A young, highly educated workforce awaits any business looking to locate within Clive. The community's median age is 35 with an estimated population of 18,600 after the 2020 census. Clive's residential base maintains an extremely large number of advanced degrees in the state, second only to Iowa City.

Quality of Life

Clive tops the lists of relocation options for a number of reasons: low residential taxes, high-quality educational systems, a vibrant public art initiative, and an exceptional offering of parks and recreational areas surrounding one of our best features, the Clive Greenbelt Trail system. "Clive Pride" is evident throughout the community from our clean, friendly neighborhoods to the beautiful streetscape project along N.W. 86th Street.



Please contact the Clive Chamber of Commerce at (515) 222-5295 or info@clivechamber.org with any questions you may have regarding relocating your business within Clive. We would welcome the opportunity to show you what makes Clive a community of distinction where your business will grow and prosper.

PRESIDENT'S CLUB GRANTS

Each year, the Clive Chamber of Commerce's President's Club members choose projects or programs to support for the betterment of the Clive community. On Dec. 14, 2022, four organizations received funding to help make their visions a reality.

Clive Lions Club was awarded a \$500 Clive Chamber President's Club grant to help support their Holiday Basket Program. This is the 30th year of the program, and this year they were able to help about 400 individuals (around 85 families)

in our community that were in need during the holiday season. All because of the generosity of the people and businesses in the Clive community! All the funds donated towards this project are spent to deliver baskets of food, personal items, clothing and children's toys.



The \$500 grant the **Clive Fire Department** received will be used to purchase a battery-powered pole saw kit. This tool will be used to open ceilings and overhead confined spaces to access burning areas and extinguish fires more quickly and safely, as well as improving the safety of firefighters and reducing property damage. The battery-powered kit will replace older cycle gas-powered pole saws that can be difficult to start, maintain, and that may not operate properly in a smoke-filled environment.



Big Brothers Big Sisters of Central Iowa (BBBSI)

received a \$500 Clive Chamber President's Club grant to help support their mentoring programs that serve youth living or going to school in Clive. These programs include school or community-based programs where Bigs spend an hour with their Littles doing things such as schoolwork, playing educational games, reading together, playing outside, or attending a sporting event, art class and much more. This program that BBBSI provides benefits the Community of Clive by inspiring youth to create meaningful relationships, ensure that youth have the education they need to enter the workforce and give Littles the skills they need to enroll in a higher education if they would like to.



Clive Historical Society received a \$500 Clive Chamber President's Club grant to help pay for an Internet service subscription that will provide free Wi-Fi in Swanson Park. This service will be a resource for the underserved members of the community and will also be available to school groups that receive educational tours. As the original city center of Clive, Swanson Park has numerous diverse visitors daily, and the available Wi-Fi will increase their enjoyment and time spent in the park.

The Clive Chamber looks forward to each of these projects and programs making a difference in our community!

Thank you to our President's Club members for your generosity and commitment to the Clive Chamber of Commerce's success. Without your support, these grants would not be possible.



VisionBank®

Buying or Selling?

(515) 226-3302 | visionbank.com

12901 University Ave. | Clive, IA 50325

Member
FDIC



Whether you're looking to buy your first home or have your eyes on a house with room to grow, VisionBank has the best mortgage lenders with competitive rates and flexible terms to meet your needs.

VisionBank mortgages come equipped with low rates, no application fees, and a fast approval process. Best of all, our VisionBank mortgage lenders provide the hassle-free, money-saving experience you deserve.

Contact Your Mortgage Lender



Michael Kentfield

**VP | Mortgage & Consumer
Lender | Metro BD Officer**

mike.kentfield@visionbank.com

NMLS# 644434



Jebb Rich

VP | Mortgage & Consumer Lender

jebb.rich@visionbank.com

NMLS# 212235



BARNUM FLOORS



Specializing in real wood floors, new installation, restoration of existing hardwood, vintage & handscraped woods, burnished finishes, custom stains, medallions, staircases, custom borders, parquets and Mirage pre-finished hardwood.

9460 Swanson Boulevard | Clive, IA 50325
www.barnumfloors.com | 515-270-2211

Precision watch & clock repair services

*Over 30 years of experience
from our master clockmaker
and timepiece specialists.*



Windsor Clock & Watch

2035 NW 100th Street, Clive
515-277-0277

windsorclockandwatch.com



MAYOR & CITY COUNCIL

Welcome from the City of Clive!

Clive is a distinct city to live, play, and raise a family. Known for our beautiful Greenbelt Park and Trail, which runs the length of the city, residents and businesses consistently give Clive the highest marks for safety, care for natural and open spaces, value for taxes paid, and trust in their municipal government.



Clive has almost 20,000 residents and is located at the crossroads of two interstate highways (35 & 80). Its central location in the Des Moines metro area creates easy access to work, world class art and culture, exceptional schools, and we're currently developing hundreds of acres for residential and commercial projects.

Clive offers rich community amenities while honoring its tradition of fiscal responsibility. Our households in Polk and Dallas counties have some of the lowest combined tax rates in the Des Moines metro for families.

John Edwards | Mayor of Clive

515-223-6220 | jedwards@cityofclive.com
1900 N.W. 114th St., Clive | Term Expires: 2025

CLIVE CITY COUNCIL MEMBERS



Srikant Mikkilineni
515-344-3099
smikkilineni@cityofclive.com
Term Expires: 2023



Susan Judkins
14067 S. Shore Drive
sjudkins@cityofclive.com
515-681-7878
Term Expires: 2023



Eric Klein
14938 Summit Drive
eklein@cityofclive.com
515-971-6472
Term Expires: 2025



Michael McCoy
1950 N.W. 89th St.
mmccoy@cityofclive.com
515-978-8232
Term Expires: 2025



Ted Weaver
1408 N.W. 122nd St.
tweaver@cityofclive.com
515-339-5667
Term Expires: 2023

CITY AMENITIES



The Clive Public Library offers a wide variety of educational resources, as well as thought-provoking and entertaining programs for all ages each year. A wide selection of printed materials is available for checkout, but there are also many nontraditional items as well, which cater to a diverse community's need to keep learning and growing. The Clive Public Library serves as a community hub with features such as a computer lab, many study and meeting rooms, as well as spaces for youth and teens to discover, play and learn. Stop by the Clive Public Library at 1900 N.W. 114th St. with a form of identification to get your library card today!

The City of Clive is home to several permanent commissioned artworks that celebrate community pride as well as community history. "Art Along the Trail" features nine artworks annually in a temporary exhibit along the Clive Greenbelt Trail and in several Clive parks. The exhibit runs from April through November, and new artworks are featured each year.

In 2022, the Harbach Center opened in the old public safety building located at 8505 Harbach Blvd., next to Linnan Park. The Harbach Center contains a branch of the Clive Public Library, a community room, and a large recreation space that is free and open to the public. Hours of operation, along with a calendar of programs for the Harbach Center, can be found at www.cityofclive.com/harbachcenter.



CLIVE COMMUNITY
FOUNDATION
*Give Where
You Live*



2023 Grant Recipients

See how you
can make a
difference



www.clivecommunityfoundation.org

your neighbors
in health

UnityPoint Clinic is here to keep you being you. Our family of services makes it easy for your family to get the care you need, close to home.

UnityPoint Clinic OB/GYN - Clive
12339 Stratford Dr. Clive, IA | 515-263-9107

unitypoint.org



UnityPoint Clinic

CITY AMENITIES



Clive's tagline, "Distinct by Nature," is truly accurate when discussing the community's many parks, green spaces, and the exceptional Greenbelt Trail. For easy access, the Greenbelt Trail includes trailheads at N.W. 86th St., N.W. 100th St., Campbell Recreation Area, and Wildwood Park. The trail is open for use year-round, as snow is removed from the trail during winter months. Twenty-three parks are located within Clive's city limits, which totals 527 acres and 19 miles of multi-purpose recreational trails, providing a beautiful backdrop to enjoy a variety of activities. Additionally, the Clive Greenbelt Trail connects to the larger central Iowa trail system, with uninterrupted access to destinations across central Iowa. The recreation division also plans and manages a wide range of recreation programs for all age groups from preschoolers to active older adults. This means that residents and visitors alike are given the opportunity to participate in a number of sports and activities throughout the

year. Campbell Park holds adult softball and sand volleyball leagues as well as youth sports throughout the summer, which demonstrates how the City of Clive provides something fun for everyone.

The Clive Aquatic Center is an outdoor facility that is open during the summer, making it a community asset that provides a place for people to come together and cool off on a warm summer day. The facility features a zero-depth entry leisure pool, a 315-foot lazy river, a six-lane lap pool, three water slides, and a children's sprayground. The aquatic center also offers swimming lessons for young children through adults each summer. Additionally, the aquatic center is available to be rented out for special events. To learn more about hours, rates for rental, or other specifics about the aquatic center, you can visit their website, www.cityofclive.com. The Clive Aquatic Center's opening date for 2023 is projected for Memorial Day weekend.



FAITH



Quality of life is at the forefront for all residents in Clive, and part of that quality includes attending a place of worship. There are several institutions in Clive and within the surrounding communities where one can worship.

Connections Christian Church

Meets at Rex Mathes School
1401 Vine St., West Des Moines
515-255-8668
www.connectionschristian.org

Eternity Church

2000 N.W. 100th St. | 515-223-9260
myeternitychurch.com

Faith Lutheran Church

10395 University Ave. | 515-225-8334
www.faithlc.org

Heartland Presbyterian Church

14300 Hickman Road | 515-987-4246
www.hpcusa.wordpress.org

Life.Church

15915 Hickman Road | 515-293-4114
www.life.church/desmoines

Living Faith Clive

2180 N.W. 142nd St. | 515-987-4030
livingfaithclive.com

Pure Land of Iowa

8364 Hickman Road | 515-278-4146
www.purelandofiowa.org

CAMBRIA

SEE THE WORLD'S
FINEST QUARTZ
SURFACES

NFM

15500 Hickman Road • Clive, IA 50325
M-F 10am-8pm • Sa 10am-7pm • Su 11am-6pm
515-727-6500 • 800-309-5560 • nfm.com
©2023 Nebraska Furniture Mart, Inc.

READY WHEN YOU NEED US

FIRE, WATER AND MOLD DAMAGE Carpet & Upholstery Specialists

24/7/365 Emergency Service

ServiceMaster by Rice

515-274-9109
www.ServiceMasterbyRice.com

2018 Clive Chamber Business of the Year!

Locally Owned & Serving the Greater Des Moines Area for over 50 Years by Austin and Joe Rice and Randy Roovaart
©2009 ServiceMaster Clean. All rights reserved. Services provided by independent businesses licensed to serve you by ServiceMaster Clean. *Green Cleaning may not be available for all ServiceMaster Clean® services. Check with your provider for details.

NEW TO CLIVE?



Gas and Electricity

MidAmerican Energy 1-888-427-5632

Water and Sewer

Clive Utility Billing Department 515-867-5199

Clive Public Works Department 515-223-6231

Cable, Internet and Telephone

Mediacom 1-855-633-4226

CenturyLink 1-866-642-0444

Mi-Fiber 1-844-499-0399

MetroNet 1-877-407-3224

Garbage, Recycling and Yard Waste

Garbage pickup is weekly, but recycling carts are emptied every other week. Please refer to the sticker on the lid for your pick-up schedule. For yard waste disposal, Clive has Compost It! stickers that can be purchased at City Hall and attached to the waste that needs to be picked up.

Clive City Hall 515-223-6220

Metro Waste Authority 515-244-0021

Dog and Cat Licenses

A license can be obtained at www.petdata.com/clive. Licenses must be submitted with a copy of rabies certificate and proof of spay/neuter if applicable. License Fees:

Altered Cat: \$17

Intact Cat: \$24

Altered Dog: \$19

Intact Dog: \$29

Pet Data 1-833-991-0934

Leisure Services

Parks and Recreation Information 515-223-5246

Clive Aquatic Center 515-440-0599

Public Library Information 515-453-2221

Community Development

If you have any questions regarding building permits, zoning regulations, engineering, or sign permits, contact the City Community Development Department.

Clive Community Development Department 515-223-6221

Director: Doug Ollendike

Administration

If you have any questions regarding City Council agenda, official city record, city employment matters, or general city inquiries, contact the City Clerk's office.

City Hall 515-223-6220

www.cityofclive.com

City Manager: Matt McQuillen

City Clerk: Matthew Graham

Fire/EMS

Administrative Offices: 8800 Hickman Road, Clive

Emergency 911

Non-Emergency 515-223-1595

Fire Chief: Rick Roe

Police

Administrative Offices: 8800 Hickman Road, Clive

Emergency 911

Non-Emergency 515-278-1312

Police Chief: Michael Venema

Public Works

2123 N.W. 111th St., Clive

General Information 515-223-6231

Director: Jeff May

CIVIC ORGANIZATIONS



A number of active civic organizations are based in Clive. These organizations offer Clive residents the opportunity to volunteer their time and talents and actively engage in building a stronger community through their service.

Clive Chamber of Commerce

The Clive Chamber of Commerce is focused on offering services and benefits to support both the local business community and the Clive community as a whole. The organization offers ribbon cuttings for new businesses, monthly networking programs, and leadership and volunteer opportunities for residents and business professionals. For more information or a membership application, go to www.clivechamber.org.

Clive Historical Society

Members of the Clive Historical Society work to make a difference within our community by preserving local historical landmarks and sharing our history through hosting open-house events and by-appointment tours. They welcome students, homeschooleders, adults, tourists, and groups depending on size. To inquire about donating/loaning historical artifacts/photos, or other questions, leave a message at 515-329-5147. To make a financial donation or to learn more about Clive's history, visit www.clivehistoricalsociety.com and follow them on Facebook.

Clive Lions Club

The Clive Lions Club has served the local community since 1977. Dedicated to community service and following their motto, "We Serve," the Clive Lions Club sponsors Scout Packs, has an annual holiday food and toy project for families in need, spends hundreds of hours annually conducting eye exams for preschoolers, and helps with numerous other community service projects. This group additionally selects and honors the Citizen of the Year.

Clive Community Foundation

The Clive Community Foundation (CCF) is a conduit for connecting donors with causes they care about. The CCF Community Priorities program focuses on three primary areas: Quality of Life Initiatives, Community Health & Wellness, and Community Collaboration. The CCF identifies programs or services that are important to the continued prosperity of the city and its residents. The CCF is an affiliate of the Community Foundation of Greater Des Moines and is held to rigorous expectations and financial accountability. The foundation facilitates the investment of financial resources to advance the city and optimizes the living experience of the residents through a variety of programs and services. For more details on the Clive Community Foundation or to make a donation, go to www.clivecommunityfoundation.org.



Clive Community Services (CCS)

Clive Community Services (CCS) is a community-supported organization that provides free human services to all in need. The organization was established in 2014 as a 501(c)3 non-profit organization to serve the Clive community. It operates a food pantry in partnership with the Des Moines Area Religious Council (DMARC). CCS also offers personal care items, clothing, classes for English Language Learners, and a free medical clinic in partnership with Free Clinics of Iowa. CCS is completely financed by grants and donations and depends on volunteers to operate. To learn more, call 515-257-8550, email director@clivecommunityservices.com, or visit clivecommunityservices.com.

18 2023 Official Clive Chamber Directory & Community Guide | www.clivechamber.org

WAUKEE COMMUNITY SCHOOL DISTRICT

Waukee Community School District is the sixth-largest district in the state, serving more than 13,000 students from Clive, Urbandale, Waukee and West Des Moines living in the 55 square miles of our district boundaries. Waukee students currently attend school in 10 elementary buildings, four middle-level buildings, and two comprehensive high schools.

Our fifth middle-level building, Trailridge School, along with an aquatics facility, Waukee Schools Natatorium, will open this year (2023). Our 11th elementary, Waterford Elementary, will open in the fall of 2024.

As we navigate continued growth, our district is committed to removing the barriers that may impact student progress and achievement by providing the necessary tools, opportunities and increasingly advanced instruction at all grade levels. We are proud of the comprehensive programming we are able to offer our students in the areas of academics, performing arts and athletics.



Every employee and community partner associated with our district works to deliver our mission and vision each day. Specifically, we want to partner with families to prepare every child for success after high school. Learning and doing what's best for our students will always be our primary focus.

We have many exciting things happening and invite you to get involved with our schools. Be informed, join the excitement, and partner with us!

Sincerely,
Dr. Brad Buck, Superintendent

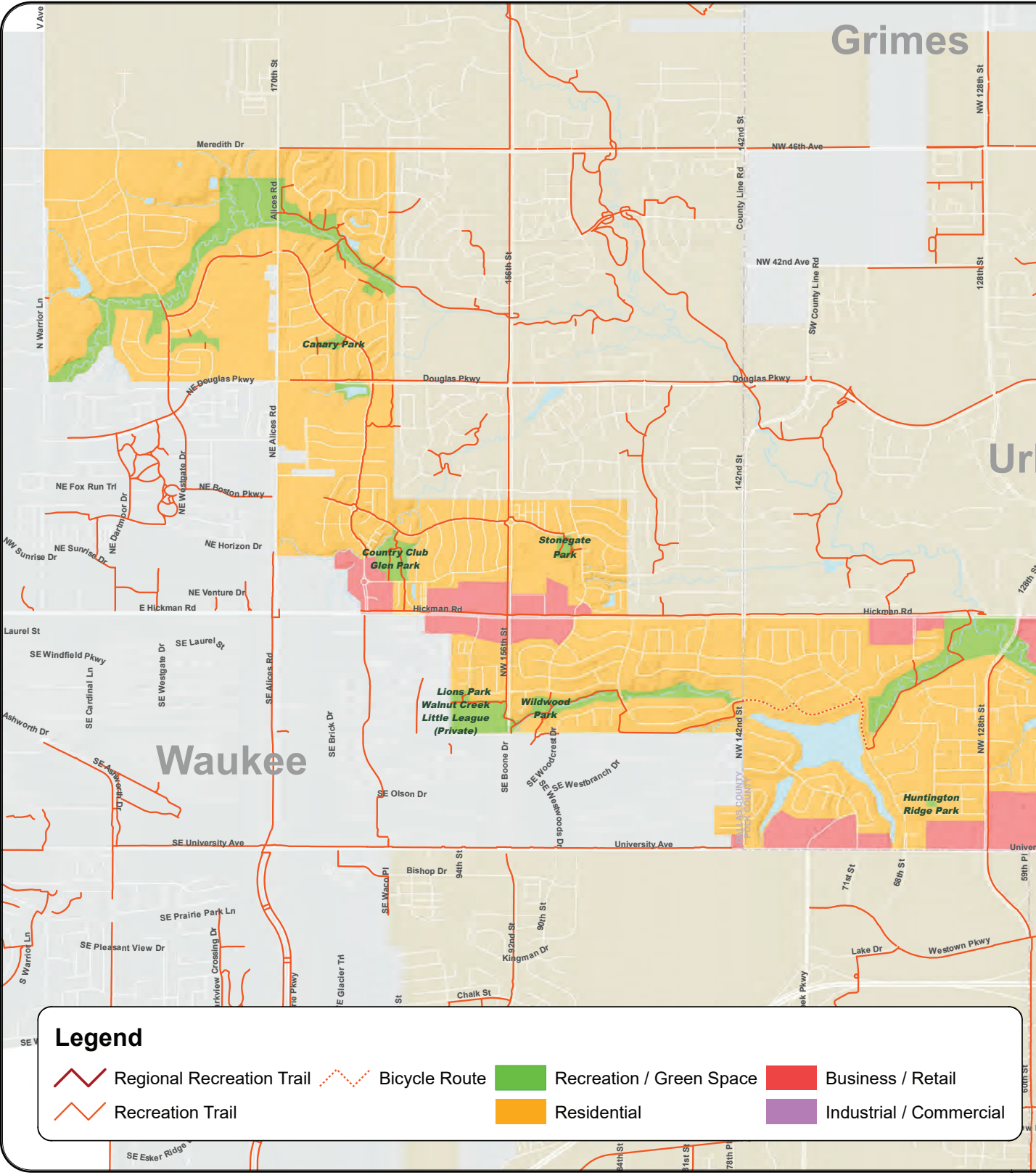


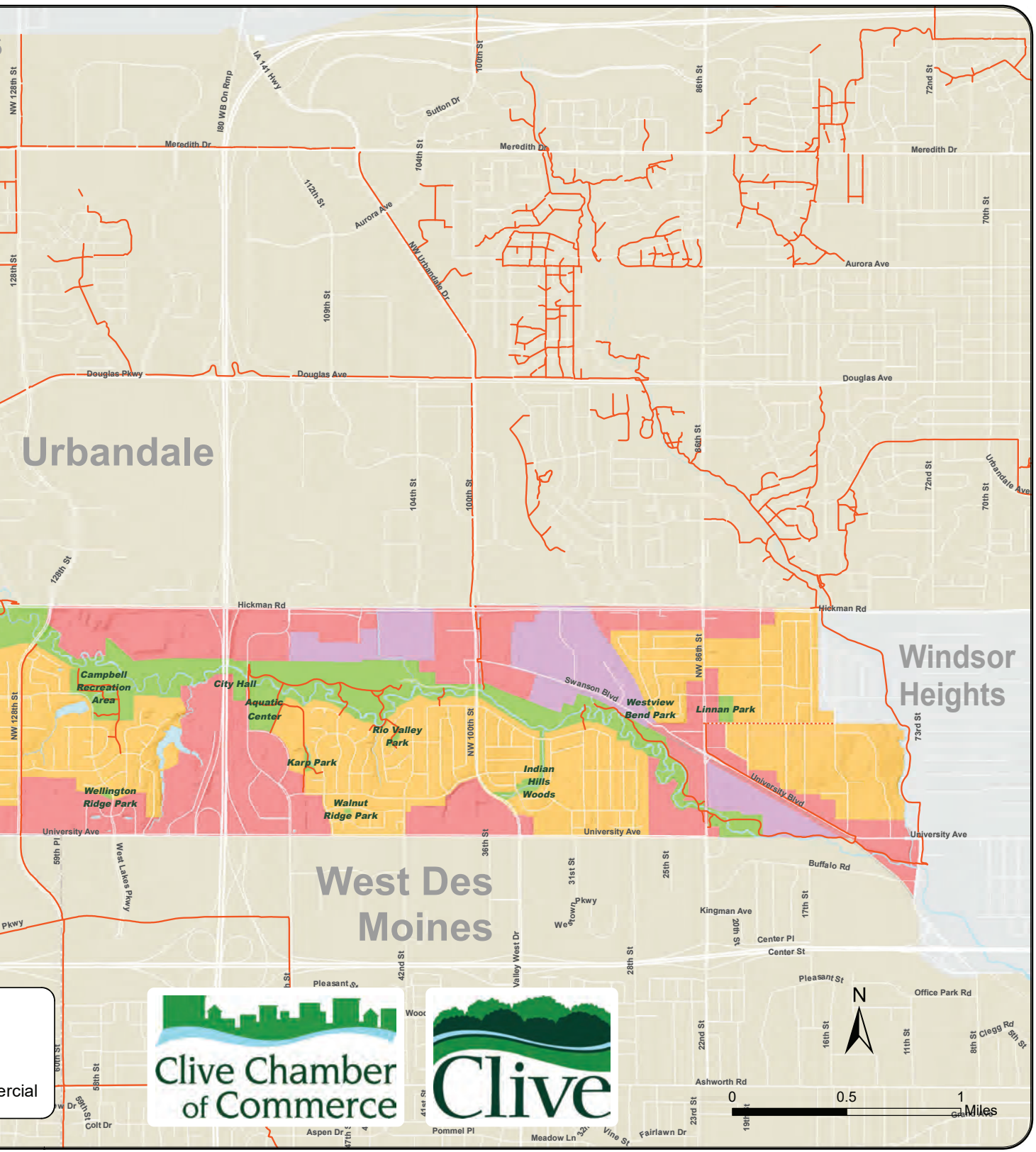
Meeting Greater Des Moines' mobility needs

From on-demand service to creative community partnerships, DART is fueled by innovation to meet our region's transportation needs and provide reliable options to help central Iowans get to work.



CLIVE AREA MAP





MEMBERSHIP DIRECTORY by category

ADVERTISING/SPECIALTIES

Triplett Office Solutions

AGRIBUSINESS

Cargill, Inc.

ANIMAL/VETERINARIANS

Waukee-Clive Veterinary Clinic

AUTOMOTIVE

Clive Maaco

AUTOMOTIVE/DEALERS

Stew Hansen Buick GMC

AUTOMOTIVE/SERVICE

Christian Brothers Automotive

Mike's Auto Service

Westside Auto Pros

BUSINESS SERVICES/COACHING

Accelerate ActionCOACH Business Coaching

CLEANING-MAINTENANCE

C.A.M.S. - Cleaning and Maintenance Solutions

CLEANING-MAINTENANCE/DISASTER

ServiceMaster by Rice

COMMUNICATIONS/MAGAZINES

Iowa Living magazines

COMMUNICATIONS/RADIO

Life 107.1

COMMUNICATIONS/TELECOMMUNICATIONS

Metronet

COMPUTER/EQUIPMENT

Electronic Office, LLC

CONSTRUCTION/MANAGEMENT

Superstorm Restoration

CONTRACTOR

Buresh Home Solutions

CONTRACTORS/ELECTRICAL

Baker Electric, Inc.

CONTRACTORS/HOME BUILDERS

Eden + Gray Design Build

CONTRACTORS/PLUMBING

Schlievert Plumbing, Inc.

CONTRACTORS/REMODELING

Silent Rivers Design + Build

Zenith Design + Build

CONTRACTORS/ROOFING-GUTTERS

Heartland Roofing, Siding, and Solar

CONTRACTORS/SIDING

A New Look Exteriors

EDUCATION/PUBLIC

Waukee Community Schools

West Des Moines Community Schools

EMPLOYMENT/AGENCIES & STAFFING

Advance Services, Inc

ENTERTAINMENT-RECREATION

Horizon Events Center

ENTERTAINMENT-RECREATION/DISC JOCKEYS

Complete Weddings + Events

ENTERTAINMENT-RECREATION/VISITOR INFORMATION

Catch Des Moines

ENVIRONMENTAL/WASTE MANAGEMENT

Metro Waste Authority

EVENTS/RENTAL SERVICES

Metro Rental

Sherwood Forest Event Center

FINANCE/ACCOUNTANTS

Charles A Jones, Certified Public Accountant

FINANCE/BANKS

Bankers Trust - Clive Branch

Bank of the West BMO Harris Bank N.A.

Central Bank

DB&T

First Interstate Bank

Great Southern Bank

Iowa Trust & Savings Bank

Lincoln Savings Bank

Luana Savings Bank

Midwest Heritage Bank

Northwest Bank

Peoples Bank

Two Rivers Bank & Trust

Wells Fargo Clive

FINANCE/CREDIT UNIONS

GreenState Credit Union

FINANCE/INVESTMENTS

Morgan Stanley

FITNESS

Aptitude Fitness

MercyOne Health and Fitness

Orangetheory Fitness

Triumph Martial Arts

FOOD-BEVERAGE

Fierce Nutrition

The Liquor Cabinet

FOOD-BEVERAGE/BAKERIES

Eileen's Colossal Cookies

Nothing Bundt Cakes

FOOD-BEVERAGE/BREWERIES

515 Brewing Company

FOOD-BEVERAGE/CATERING

In the Bag Corporate Cuisine

FOOD-BEVERAGE/COFFEE

A SweetDude LLC

FOOD-BEVERAGE/GROCERS

Fareway Stores, Inc.

FUNERAL SERVICES

Brooks Funeral Care

GOVERNMENT/CITY

City of Clive

GOVERNMENT/COUNTY

Polk County Iowa

HEALTH & BEAUTY/SALONS-SPAS

Clive Nails

HEALTH CARE - HEALTH CARE PROVIDERS

Capital Orthopaedics and Sports Medicine PC

The Iowa Clinic

HEALTH CARE/CHIROPRACTORS

HealthSource of Clive

HEALTH CARE/CLINICS

Iowa IV

HEALTH CARE/HOSPITALS

MercyOne Clive Rehabilitation Hospital

MercyOne West Des Moines Medical Center

HEALTH CARE/MENTAL HEALTH

Clive Behavioral Health

HEALTH CARE/OPTOMETRISTS

Heartland Family Eyecare

Premier Vision Clinic

HEALTH CARE/PHARMACIES

Midwest Compounding

HEALTH CARE/PHYSICAL THERAPISTS

Benchmark Physical Therapy

FYZICAL Therapy & Balance Centers

HEALTH CARE/PHYSICIANS

Iowa Digestive Disease Center
Waggoner Pediatrics of Central Iowa

HEALTH CARE/SERVICES

Ducharme Dermatology, PC
MercyOne Comfort Health Center for Women
Senior Helpers of Central Iowa
Walnut Creek Family YMCA

HOTEL-MOTEL

Best Western Plus
Courtyard by Marriott
SpringHill Suites by Marriott
Stoney Creek Hotel and Conference Center of
Des Moines
Wildwood Lodge

INDIVIDUAL MEMBERSHIP

Eric Klein

INSURANCE-FINANCE

ICAP
Brook Bryd-Venales Agency American Family
Insurance
MediGold

INSURANCE-FINANCE/AGENTS

Hataway & Associates, LLC
Kelli Kerton State Farm Insurance
Middendorf Insurance Associates
NCMIC
Nissen Agency, LLC
State Farm Insurance - Andrew Peschong
The Dana Company

INTERNET/WEBSITE DESIGN

Hatch
Webspec

LEGAL SERVICES/ATTORNEYS

Sullivan & Ward, P.C.

MANUFACTURING

Auto Jet Muffler Corporation

MANUFACTURING/FOOD

Marzetti Frozen Pasta

MOVING/SERVICES

Two Men and A Truck

ORGANIZATIONS/ASSOCIATIONS

Iowa Pork Producers Association
National Pork Board
Policy Works LLC

ORGANIZATIONS/CHAMBERS OF COMMERCE

Clive Chamber of Commerce
Greater Des Moines Partnership

ORGANIZATIONS/FOUNDATIONS

Clive Community Foundation

ORGANIZATIONS/NONPROFIT

Big Brothers Big Sisters of Central Iowa
Christ-Life Ministries, Inc.
Clive Community Services
Clive Historical Society
LifeServe Blood Center
My Happy Place - Des Moines
Pure Land of Iowa
The Salvation Army Capital Area Coordination
Office

ORGANIZATIONS/SERVICE CLUBS

Clive Lions Club

PHOTOGRAPHY/PHOTOGRAPHERS

Arf & Wag Studio LLC

PRINTING

Rapids Reproductions, Inc.

PRINTING/PRINTERS

TBL Print

PROFESSIONAL-DESIGN SERVICES/ ARCHITECTS

K/O Architects
Shive-Hattery, Inc.

PROFESSIONAL-DESIGN SERVICES/ ENGINEERS

McClure

PROFESSIONAL-DESIGN SERVICES/ GRAPHIC DESIGN

1809 Design

REAL ESTATE

Next Generation Realty

REAL ESTATE/AGENTS

Peoples Company

REAL ESTATE/COMMERICAL

Michael Smith, CBRE Inc.
Signature Commercial Real Estate, Inc.

RELIGIOUS AFFILIATIONS

Eternity Church
Life.Church
Living Faith Clive

RESTAURANTS

5 Borough Bagels
Capriotti's Sandwich Shop
Cooper's Hawk Winery & Restaurant
Franka Pizzeria
Gilroy's

RESTAURANTS

Jersey Mike's Subs
Machine Shed Restaurant
Nick's Bar and Grill
St. Kilda Cafe & Bakery
The Other Place

RETAIL-SHOPS-STORES

Becky's Hallmark
David's Fine Tobaccos
Interstate All Battery Center
Many Hands Thrift Market
Zoom Room Dog Training

RETAIL-SHOPS-STORES/APPLIANCES

Nebraska Furniture Mart

RETAIL-SHOPS-STORES/CLOTHING

Mr. B Clothing

RETAIL-SHOPS-STORES/CONSIGNMENT

Stuff Etc Quality Consignment

RETAIL-SHOPS-STORES/COSTUMES-DANCE

Elite Dance Outfitters, LLC

RETAIL-SHOPS-STORES/FLOORING

Barnum Floors
Flooring America
Floors Direct

RETAIL-SHOPS-STORES/GIFT ITEMS

Board and Brush Creative Studio
Posey and Jett's

RETAIL-SHOPS-STORES/JEWELERS

Anglo International
Prysm Jewelry & Piercing
Windsor Clock & Watch

RETAIL-SHOPS-STORES/SPORTING GOODS

Fitness Sports

SENIORS/REAL ESTATE

Meadowview of Clive
Walnut Ridge
Woodlands Creek Senior Living

SIGNAGE

FASTSIGNS

TRANSPORTATION/PUBLIC

Des Moines Area Regional Transit Authority

UTILITIES/UTILITY COMPANIES

MidAmerican Energy Company

WELLNESS/THERAPEUTIC MASSAGE

Massage Envoy

THANK YOU TO OUR PREMIUM MEMBERS



Bankers Trust®
BankersTrust.com Member FDIC

MERCYONESM

MIDAMERICAN
ENERGY COMPANY



NCMIC



Clive
Behavioral Health
A UHS and MercyOne Partnership



TURN YOUR DREAM HOME *Into Reality*

Whether you're a first-time homebuyer, upgrading, or downsizing, we can help you find the best loan option to achieve your unique financial goals.



Competitive rates
and flexible terms



Fast, local
decision-making



Streamlined online
application process

**Now offering
FHA loans!**

Stop by a branch and speak to one of our mortgage loan officers or visit collinscu.org/mortgage to apply.

Clive Home Loan Center, 1054 73rd Street, Clive, IA 50324

For well-qualified borrowers. All loans subject to approval. Terms and conditions may apply. Must be or become a Collins Community CU member to obtain a loan. Federally Insured by NCUA. © 2023 Collins Community Credit Union.



MEMBERSHIP DIRECTORY *alphabetical*

MEMBERSHIP LEVELS

PLATINUM MEMBER

GOLD MEMBER

SILVER MEMBER

PRESIDENT'S CLUB

1809 DESIGN

Cinnamon Rost
(515) 989-1809
www.1809design.com

5 BOROUGH BAGELS

Sarah Chem
13435 University Ave., Suite 300
Clive, IA 50325
(515) 809-1807
www.5BoroughBagels.com

515 BREWING COMPANY

Ryan Rost
7700 University Ave., Suite C
Clive, IA 50325
www.515brewing.com

A NEW LOOK EXTERIORS

Anna SmolikHagen
7580 Hickman Road, Suite C
Windsor Heights, IA 50324
(515) 276-1900
www.anewlookexteriors.com

A SWEETDUDE LLC

Phu Vijaranakorn
9763 University Ave.
Clive, IA 50325
(515) 509-0915

ACCELERATE ACTIONCOACH BUSINESS COACHING

Greg Thompson
2965 100th St.
Urbandale, IA 50322
(515) 988-0743
www.accelerateactioncoach.com

ADVANCE SERVICES, INC

Maria Garcia
1800 N.W. 86th St., Suite 7
Clive, IA 50325
(515) 635-0015
www.advanceservices.com



ANGLO INTERNATIONAL

Prescott Miller
12851 University Ave., Suite 100
Clive, IA 50325
(515) 254-0100
www.anglodiamond.com

APTITUDE FITNESS

Nikki Russell
8033 University Blvd.
Clive, IA 50325
(515) 732-5744
www.apitudedsm.com

ARF & WAG STUDIO LLC

Michel Rohner
8033 University Blvd., Suite B
Clive, IA 50325
(515) 601-3103
www.arfwag.com

AUTO JET MUFFLER CORPORATION

John Rapp
9550 Swanson Blvd.
Clive, IA 50325
(515) 224-0460
www.auto-jet.com

BAKER ELECTRIC, INC.

Cory Sloss
111 Jackson Ave.
Des Moines, IA 50315
(515) 241-9288
www.bakerelectric.com

BANKERS TRUST - CLIVE BRANCH

Chris Beener
11111 University Ave.
Clive, IA 50325
(515) 222-2003
www.bankerstrust.com

BANK OF THE WEST BMO HARRIS BANK N.A.

Diana Prince
1070 73rd St.
Clive, IA 50325
(515) 657-6333
www.bankofthewest.com

BANK OF THE WEST BMO HARRIS BANK N.A.

Adam Mower
2199 N.W. 159th St.
Clive, IA 50325
(515) 987-0110
www.bankofthewest.com

BARNUM FLOORS

Kathy Barnum
9460 Swanson Blvd.
Clive, IA 50325
(515) 270-2211
www.barnumfloors.com

MEMBERSHIP DIRECTORY *alphabetical*

BECKY'S HALLMARK

Becky Gustin
10201 University Ave., Suite B4
Clive, IA 50325
(515) 225-1333
<https://stores.hallmark.com/ia/clive/>

BENCHMARK PHYSICAL THERAPY

Brett Speirs
15966 Hickman Road
Clive, IA 50325
(515) 344-3683
<http://benchmark.urpt.com>

BEST WESTERN PLUS

Dipti Amin
1450 N.W. 118th St.
Clive, IA 50325
(515) 221-2345
www.bestwestern.com

BIG BROTHERS BIG SISTERS OF CENTRAL IOWA

Bridget Cravens-Neely
9051 Swanson Blvd.
Clive, IA 50325
(515) 288-9025
www.bbbsia.org

BOARD AND BRUSH CREATIVE STUDIO

Sarah Schultz
12871 University Ave., Suite 150
Clive, IA 50325
(515) 850-8201
www.boardandbrush.com/clive

BROOK BYRD-VENALES AGENCY AMERICAN FAMILY INSURANCE

Brook Byrd-Venales
15920 Hickman Road, Suite 500
Clive, IA 50325
(515) 978-6600

BROOKS FUNERAL CARE

Blair Overton
7975 University Blvd.
Clive, IA 50325
(515) 277-8700
www.BrooksFuneralCare.com

BURESH HOME SOLUTIONS

Steven Anthony
9379 Swanson Blvd.
Clive, IA 50325
(515) 274-2957
www.bureshhomesolutions.com

C.A.M.S. - CLEANING AND MAINTENANCE SOLUTIONS

Cameron Bennett
1820 Roebling Road
Adel, IA 50003
(515) 478-9443
www.camssolutions.com



WE STAND BY OUR PRODUCTS & SERVICES!

We are happy to offer our **UNLIMITED LIFETIME WARRANTY** on select parts. You'll be covered for the life of your vehicle, no matter how long you keep it and how far you drive it!

If a covered component fails, bring back the vehicle and we'll take care of it!

For any failure outside of our area, our nationwide **4 YEAR/ 50,000 MILE WARRANTY STILL APPLIES!**
Our lifetime warranty covers most properly maintained auto parts over the duration you own the vehicle.





**Family Owned and Operated,
Full-Service Auto Repair**
1901 NW 92nd, Clive
515-225-9090
www.westsideautopros.com
Hours: M-F: 7:30 a.m. - 5:30 p.m.

CAPITAL ORTHOPAEDICS AND SPORTS MEDICINE PC

Wendy Wilson-Rice
12499 University Ave., Suite 210
Clive, IA 50325
(515) 440-2676
www.dsmcapitalortho.com

CAPRIOTTI'S SANDWICH SHOP

Blake Lorber
13101 University Ave., Suite 1
Clive, IA 50325
(515) 316-9444
www.capriottis.com/locations

CARGILL, INC.

Katie Hall
(712) 269-9838
www.cargill.com

CATCH DES MOINES

Greg Edwards
400 Locust St., Suite 265
Des Moines, IA 50309
(515) 286-4960
www.catchdesmoines.com

CENTRAL BANK

Matt Janssen
4848 86th St.
Urbandale, IA 50322
(515) 309-5102
<http://mycentral.bank>

CHARLES A JONES, CERTIFIED PUBLIC ACCOUNTANT

Chuck Jones
1441 29th St., Suite 310
West Des Moines, IA 50266
(515) 710-4221
www.ChuckJonesCPA.com

CHRISTIAN BROTHERS AUTOMOTIVE

Bill Tiernan
15250 Hickman Road
Clive, IA 50325
(515) 444-5773
<http://CBAC.com/Clive>

CHRIST-LIFE MINISTRIES, INC.

Jim Hobson
1900 N.W. 86th St.
Clive, IA 50325
(515) 251-6838
<http://clclcenter.org>

CITY OF CLIVE

Pete De Kock
1900 N.W. 114th St.
Clive, IA 50325
(515) 223-6220
www.cityofclive.com

SUPERIOR SERVICE. LEGAL SOLUTIONS.

FOR 36 YEARS



EXPERIENCED ATTORNEYS — SINCE 1987 —

Wills, Trusts, & Estate Planning ■ Residential Real Estate
Probate & Estate Administration ■ Social Security Disability
Business Formation & Planning ■ Medicaid & Asset Protection

ATTORNEYS WHO SPECIALIZE IN YOU



ABENDROTH RUSSELL BARNETT LAW FIRM

ESTABLISHED IN 1987

2560 73rd St., Urbandale ■ **515.278.0623** ■ www.ARPCLaw.com

MEMBERSHIP DIRECTORY *alphabetical*

CLIVE BEHAVIORAL HEALTH

Jason Bridie
1450 N.W. 114th St.
Clive, IA 50325
(844) 680-0504
www.clivebehavioral.com

CLIVE CHAMBER OF COMMERCE

Kristy Schmidt
1900 N.W. 114th St.
Clive, IA 50325
(515) 222-5295
www.clivechamber.org

CLIVE COMMUNITY FOUNDATION

Bob Forte
www.clivecommunityfoundation.org

CLIVE COMMUNITY SERVICES

Lisa Earles
2190 N.W. 82nd St., Suite A
Clive, IA 50325
(515) 257-8550
www.clivecommunityservices.com

CLIVE HISTORICAL SOCIETY

Mike Alowitz
P.O. Box 71262
Clive, IA 50325
(515) 229-6855
www.clivehistoricalsociety.org

CLIVE LIONS CLUB

Brad Brown
(515) 224-9898
www.iowalions.org/clive

CLIVE MAACO

Pat Schmidt
1998 N.W. 92nd St.
Clive, IA 50325
(515) 223-6037
www.maaco.com/locations/ia/clive-10117/

CLIVE NAILS

Kelly Tran
12695 University Ave., Suite 160
Clive, IA 50325
(515) 226-9999
www.clivenails.com

COMPLETE WEDDINGS + EVENTS

Sue Bennett
7600 University Ave., Suite A
Clive, IA 50325
(515) 266-1355
www.completewedo.com/des-moines/

COOPER'S HAWK WINERY & RESTAURANT

Nick Smith
12801 University Ave.
Clive, IA 50325
(515) 513-3330
<http://chwinery.com>

COURTYARD BY MARRIOTT

Jeff Vandersluis
1520 N.W. 114th St.
Clive, IA 50325
(515) 225-1222
www.marriott.com



Love the way you live.

INDEPENDENT LIVING | ASSISTED LIVING | MEMORY CARE

WOODLANDS CREEK
DIAL SENIOR LIVING
12675 Woodlands Parkway, Clive, IA 50325
WoodlandsCreek.com

Love the way you live at Woodlands Creek!

CALL TODAY TO SCHEDULE YOUR PERSONAL TOUR!

833-487-9298

- ✓ Award winning service
- ✓ Amazing residents
- ✓ Housekeeping
- ✓ 24-hour on-site staffing
- ✓ Restaurant-style dining
- ✓ Ice cream parlor
- ✓ Exciting activities and events
- ✓ and so much more!

DAVID'S FINE TOBACCOS

Sean David
9759 University Ave.
Clive, IA 50325
(515) 278-8701
www.davidsfinetobaccos.com

DB&T

Jeff Travis
13101 University Ave., Suite 3
Clive, IA 50325
(515) 381-7955
www.dubuquebank.com

DES MOINES AREA REGIONAL TRANSIT AUTHORITY

Dakoda Hall
620 Cherry St.
Des Moines, IA 50309
(515) 283-8100
www.ridedart.com

DUCHARME DERMATOLOGY, PC

Alex Ducharme
16349 Sheridan Ave., Suite 101
Clive, IA 50325
(515) 987-0333
www.ducharmedermatology.com

EDEN + GRAY DESIGN BUILD

Hanna Shiplett
2005 N.W. 100th St.
Clive, IA 50325
(515) 975-5527
www.edenandgray.com

EILEEN'S COLOSSAL COOKIES

Ashlee Goodrich
7222 University Ave.
Windsor Heights, IA 50324
(515) 630-0604
<http://eileenscookies.com>

ELECTRONIC OFFICE, LLC

Erik Anderson
8345 University Blvd., Suite G
Clive, IA 50325
(515) 244-4155
www.electronicbiz.com

ELITE DANCE OUTFITTERS, LLC

Angie Babb
9962 Swanson Blvd.
Clive, IA 50325
(515) 276-6115
<http://stores.elitedanceoutfitters.com>

ERIC KLEIN

14938 Summit Drive
Clive, IA 50325
(515) 971-6472

ETERNITY CHURCH

Jesse Newman
2000 N.W. 100th St.
Clive, IA 50325
(515) 223-9260
www.myeternity.com

THE LUCKY GAL YOU KNOW AND LOVE NOW IN CLIVE



1800 NW 86th St
Suite 9
Clive, IA

Open
Monday - Saturday
12PM - 8PM



BEST PLACE TO
GET A TATTOO

WALK IN
TATTOOS
PIERCINGS
JEWELRY

STOP IN TODAY TO BOOK YOUR APPOINTMENT!

515*257*7940

WWW.LUCKYGALTATTOO.COM | 2023

MEMBERSHIP DIRECTORY

alphabetical

FAREWAY STORES, INC.

10151 University Ave.
Clive, IA 50325
(515) 223-0164
www.farewaystores.com

FASTSIGNS

Max Holmes
1791 N.W. 86th St.
Clive, IA 50325
(515) 224-1210
www.fastsigns.com/42

FIERCE NUTRITION

Kassie McChurch
7220 University Ave.
Windsor Heights, IA 50324
(515) 205-3538
www.facebook.com/fiercewindsorheights

FIRST INTERSTATE BANK

Nancy Zwickel
10101 University Ave.
Clive, IA 50325
(515) 223-1607
www.firstinterstatebank.com

FITNESS SPORTS

Jordan Andrews
8810 Swanson Blvd.
Clive, IA 50325
(515) 277-4785
www.fitnesssports.com

FLOORING AMERICA

Sara Trent
10200 Hickman Road
Clive, IA 50325
(515) 331-4613
www.iowaflooringamerica.com

FLOORS DIRECT

Scott Stillwell
2239 N.W. 108th St.
Clive, IA 50325
(515) 270-3885
www.floorsdirectiowa.com

FRANKA PIZZERIA

Whitney Hall
12695 University Ave., Suite 100
Clive, IA 50325
(515) 223-2384
clive.frankapizzeria.com

FYZICAL THERAPY & BALANCE CENTERS

Kaibrea Schoning
12499 University Ave., Suite 250
Clive, IA 50325
(515) 985-7530
www.fyzical.com/clive-ia



GILROY'S

Carl Wertzberger
1238 Eighth St.
West Des Moines, IA 50265
(515) 809-1727
www.gilroyskitchen.com

GREAT SOUTHERN BANK

Patti George
12257 University Ave.
Clive, IA 50325
(515) 453-2265
www.greatsouthernbank.com

GREATER DES MOINES PARTNERSHIP

Meg Schneider
700 Locust St., Suite 100
Des Moines, IA 50309
(515) 286-4950
www.dsmpartnership.com

GREENSTATE CREDIT UNION

Laura Meeker
12333 University Ave.
Clive, IA 50325
(515) 608-5960
www.greenstate.org

HATAWAY & ASSOCIATES, LLC

Evan Hataway
12871 University Ave., Suite 130
Clive, IA 50325
(515) 225-7562
<http://hatawayagency.com>

HATCH

Maggie Wyborny
218 1/2 Fifth St.
West Des Moines, IA 50265
(515) 224-1025
www.hatchdsm.com

HEALTHSOURCE OF CLIVE

Elizabeth Sweers
15920 Hickman Road, Suite 900
Clive, IA 50325
(515) 987-9574
www.healthsourcechiro.com/clive

HEARTLAND FAMILY EYECARE

Kelly Soultz
1250 N.W. 128th St., Suite 150
Clive, IA 50325
(515) 223-9595
www.heartlandfamilyeye.com



HEARTLAND ROOFING, SIDING AND SOLAR

Chase Steuben
2175 N.W. 86th St., Suite 10
Clive, IA 50325
(515) 219-4847
www.heartlandroofingandsiding.com

HORIZON EVENTS CENTER

Gary DeWard
2100 N.W. 100th St.
Clive, IA 50325
(641) 590-3640
www.horizoneventscenter.com

ICAP

Kasi Koehler
12951 University Ave., Suite 120
Clive, IA 50325
(515) 421-5446
<http://icapiowa.com>

IN THE BAG CORPORATE CUISINE

Marty Kennedy
79 University Ave.
Des Moines, IA 50314
(515) 222-9338
www.inthebag-lunches.com

INTERSTATE ALL BATTERY CENTER

Brian Weber
1090 73rd St.
Clive, IA 50324
(515) 255-9572
www.interstatebatteries.com

IOWA DIGESTIVE DISEASE CENTER

Meridith Westbrook
1378 N.W. 124th St.
Clive, IA 50325
(515) 288-6097
www.iddc.net

IOWA IV

Kari Nunnikhoven
15920 Hickman Road, Suite 200
Clive, IA 50325
(833) 424-9378
www.iowaiv.com

IOWA LIVING MAGAZINES

Jolene Goodman
8101 Birchwood Court, Suite D
Johnston, IA 50131
(515) 953-4822 ext. 319
www.iowalivingmagazines.com

MEMBERSHIP DIRECTORY *alphabetical*

IOWA PORK PRODUCERS ASSOCIATION

Drew Mogler
1636 N.W. 114th St.
Clive, IA 50325
(515) 225-7675
www.iowapork.org

IOWA TRUST & SAVINGS BANK

Paul Pick
12035 University Ave., Suite 202
Clive, IA 50325
(515) 225-6229
www.iowatrustbank.com

JERSEY MIKE'S SUBS

Josh Fitzgerald
12851 University Ave., Suite 200
Clive, IA 50325
(515) 224-1000
www.jerseymikes.com

K/O ARCHITECTS

Sarah Overton
650 S. Prairie View Drive, Studio 103
West Des Moines, IA 50266
(515) 288-4821
www.k-o.com

KELLI KERTON STATE FARM INSURANCE

Kelli Kerton
8818 Swanson Blvd.
Clive, IA 50325
(515) 277-7227
<http://kertoninsurance.com>

LIFE 107.1

LuAnne Gafford
3737 Woodland Ave., Suite 600
West Des Moines, IA 50266
(515) 327-1071
www.life1071.com

LIFE.CHURCH

Josh Catania
15915 Hickman Road
Clive, IA 50325
(515) 293-4114
www.life.church/desmoines

LIFESERVE BLOOD CENTER

Danielle West
431 E. Locust St.
Des Moines, IA 50309
(800) 287-4903
www.lifervebloodcenter.org

LINCOLN SAVINGS BANK

Breanne Neel
13523 University Ave.
Clive, IA 50325
(515) 222-0123
www.mylsb.com



Treat Yourself & YOUR SKIN!

Heartland provides many non-invasive procedures to make you feel your best!

- Coolsculpting
- Laser hair removal
- Botox & filler
- Microneedling
- Waxing
- So much more!

HEARTLAND
PLASTIC & RECONSTRUCTIVE SURGERY, P.C.

10611 HICKMAN ROAD, DES MOINES, IA 50322
515-254-2265 • WWW.HEARTLANDPS.COM

The staff at Heartland made me feel so comfortable. It was my first time getting botox and she walked me through every step, making me relaxed and less anxious. They are all down to earth and care about helping me feel and look my best. I would highly recommend this group! - KM, Johnston, IA

LIVING FAITH LUTHERAN CHURCH

Sheila Treu
2180 N.W. 142nd St.
Clive, IA 50325
(515) 987-4030
<http://livingfaithclive.com>

LUANA SAVINGS BANK

Angie Sprenger
16390 Holcomb Court
Clive, IA 50325
(515) 987-2116
www.luanasavingsbank.com

MACHINE SHED RESTAURANT

Nancy Shepard
11151 Hickman Road
Urbandale, IA 50322
(515) 270-6818
www.machineshed.com

MANY HANDS THRIFT MARKET

Tyler Kamerman
8801 University Ave., Suite D-10
Clive, IA 50325
(515) 221-1174
www.manyhandsthift.com

MARZETTI FROZEN PASTA

John Jackson
8714 Swanson Blvd.
Clive, IA 50325
(515) 309-5209
<http://marzetti.com>

MASSAGE ENVY

Mike Earp
12655 University Ave., Suite 180
Clive, IA 50325
(515) 225-3689
www.massageenvy.com

MCCLURE

Lauren Gutknecht
1360 N.W. 121st St.
Clive, IA 50325
(515) 964-1229
www.mecresults.com

MEADOWVIEW OF CLIVE

Staci Fjelland
3300 Berkshire Parkway
Clive, IA 50325
(515) 644-8740
www.cassialife.org

MEDIGOLD

Michael Kix
1449 N.W. 128th St., Suite 210
Clive, IA 50325
(800) 964-4525
www.medigold.com

MERCYONE CLIVE REHABILITATION HOSPITAL

Nikki Nigg
1401 Campus Drive
Clive, IA 50325
(515) 358-9461
www.mercydesmoines.org

MERCYONE COMFORT HEALTH CENTER FOR WOMEN

1601 N.W. 114th St., Suite 151
Clive, IA 50325
(515) 222-7474
www.mercyone.org

MERCYONE HEALTH AND FITNESS

Emily Bialas
12493 University Ave.
Clive, IA 50325
(515) 226-9622
www.mercyhealthfitness.com

MERCYONE WEST DES MOINES MEDICAL CENTER

Samuel Schone
1755 59th Place
West Des Moines, IA 50266
(515) 358-8112
www.mercydesmoines.org

METRO RENTAL

Cory Gleason
10095 Hickman Court, Suite 6
Clive, IA 50325
(800) 560-3408
www.rentaliowa.com

METRO WASTE AUTHORITY

Michael McCoy
300 E. Locust St.
Des Moines, IA 50309
(515) 244-0021
www.mwatoday.com

METRONET

Sarah Walker
(507) 383-0359
www.metronetinc.com



MICHAEL SMITH, CBRE INC.

6900 Westown Parkway
West Des Moines, IA 50266
(515) 221-6675

MIDAMERICAN ENERGY COMPANY

Ken Setzkorn
3500 104th St.
Urbandale, IA 50322
(515) 281-2595
www.midamericanenergy.com

MIDDENDORF INSURANCE ASSOCIATES

Claudia Howell
8400 Hickman Road
Clive, IA 50325
(515) 252-1414
www.middendorffins.com

MIDWEST COMPOUNDING

Tyler Greiner
9379 Swanson Blvd., Suite E
Clive, IA 50325
(515) 962-9314
www.MidwestCompounding.com

MIDWEST HERITAGE BANK

Daniel Hamann
1725 Jordan Creek Parkway
West Des Moines, IA 50266
(515) 224-9844
www.mhbank.com

MIKE'S AUTO SERVICE

Mike Watts
10500 Hickman Road, Suite A
Clive, IA 50325
(515) 252-1400
www.mikeautoservice.com

MEMBERSHIP DIRECTORY

alphabetical

MORGAN STANLEY

Tom Hunt
1080 Jordan Creek Parkway, Suite 400N
West Des Moines, IA 50266
(515) 283-7000
<https://advisor.morganstanley.com/the-des-moines-group>

MR. B CLOTHING

Tim Sitzmann
1995 N.W. 86th St.
Clive, IA 50325
(515) 276-8589
www.mrbclothing.com

MY HAPPY PLACE - DES MOINES

Sharon Keeling
1066 Hardwick Drive N.W.
Altoona, IA 50009
(515) 779-5081
www.myhappyplaces.org

NATIONAL PORK BOARD

Eric Donielson
1776 N.W. 114th St.
Clive, IA 50325
(515) 223-2600
www.pork.org

NCMIC

David Siebert
14001 University Ave.
Clive, IA 50325
(515) 313-4500
www.ncmicgroup.com

NEBRASKA FURNITURE MART

Tim Mullen
15500 Hickman Road
Clive, IA 50325
(515) 727-6500
www.nfm.com

NEXT GENERATION REALTY

Robert Doheny
2011 100th St.
Clive, IA 50325
(515) 224-9900
www.nextgenerationrealty.com

NICK'S BAR AND GRILL

Jheison Cardenas
9769 University Ave.
Clive, IA 50325
(515) 221-1338

NISSEN AGENCY, LLC

Katie Stine
1201 63rd St.
Des Moines, IA 50311
(515) 221-0448
<https://agents.farmers.com/ia/des-moines/david-nissen>

NORTHWEST BANK

Travis Simpson
5700 University Ave.
West Des Moines, IA 50266
(515) 327-5108
www.nw.bank

NOTHING BUNDT CAKES

Melissa Hegarty
1255 N.W. 128th St.
Clive, IA 50325
(515) 223-2239
www.nothingbundtcakes.com

ORANGETHEORY FITNESS

Julie Bautista
2171 N.W. 111th St.
Clive, IA 50325
(515) 207-3430
www.orangetheoryfitness.com

PEOPLES BANK

Mary Schultz
12701 University Ave.
Clive, IA 50325
(515) 457-8880
www.mypeoples.bank

PEOPLES COMPANY

Becky Rozenboom
12119 Stratford Drive, Suite B
Clive, IA 50325
(515) 222-1347
www.peoplescompany.com

POLICY WORKS LLC

Jessica Maldonado
7745 Office Plaza Drive N., Suite 170
West Des Moines, IA 50266
(515) 224-8957
www.PolicyWorksIowa.com

POLK COUNTY IOWA

Robert Brownell
111 Court Ave., Room 300
Des Moines, IA 50309
(515) 286-3301
www.polkcountyiowa.gov

POSEY AND JETT'S

Becky Brehm
4100 University Ave., Suite 108
West Des Moines, IA 50266
(515) 745-2510
www.PoseyandJetts.com

PREMIER VISION CLINIC

Jennifer DenHartog
12695 University Ave., Suite 170
Clive, IA 50325
(515) 512-1444
www.premiervisionclinic.com

PRYSM JEWELRY & PIERCING

Robin Hill
13101 University Ave., Suite 2
Clive, IA 50325
(515) 868-4653
www.prysmpiercing.com

PURE LAND OF IOWA

Evelina Chen
8364 Hickman Road, Suite E
Clive, IA 50325
(515) 331-4144
www.purelandofiowa.org

RAPIDS REPRODUCTIONS, INC.

Dan Deininger
1980 N.W. 94th St., Suite G
Clive, IA 50325
(515) 251-3222
www.rapidsrepro.com

SCHLIEVERT PLUMBING, INC.

Emily Simmons
3181 99th St.
Urbandale, IA 50322
(515) 279-1513
<https://schlievertplumbing.com>

SENIOR HELPERS OF CENTRAL IOWA

Jeff Raines
2951 86th St.
Urbandale, IA 50322
(515) 251-7444
www.seniorhelpers.com/centraliowa

SERVICEMASTER BY RICE

Liz Rice
7555 University Ave.
Clive, IA 50325
(515) 212-2511
www.servicemasterbyrice.com

SHERWOOD FOREST EVENT CENTER

Dory Stevens
7400 Hickman Road
Windsor Heights, IA 50324
(515) 509-2332
<http://sherwoodforesteventcenter.com>

SHIVE-HATTERY, INC.

Ashley Gregory
4125 Westown Parkway, Suite 100
West Des Moines, IA 50266
(515) 223-8104
www.shive-hattery.com

SIGNATURE COMMERCIAL REAL ESTATE, INC.

Andy Hodges
4701 121st St.
Urbandale, IA 50323
(515) 221-9990
www.signatureRES.com

SILENT RIVERS DESIGN + BUILD

Brad Jensen
800 19th St.
Des Moines, IA 50314
(515) 266-6702
www.silentrivers.com

SPRINGHILL SUITES BY MARRIOTT

Matt Bertsch
1236 Jordan Creek Parkway
West Des Moines, IA 50266
(515) 223-9005
www.marriott.com

ST. KILDA CAFE & BAKERY

Whitney Hall
12695 University Ave., Suite 140
Clive, IA 50325
(515) 221-2101
<https://clive.stkildadsm.com>

STATE FARM INSURANCE - ANDREW PESCHONG

Andrew Peschong
13435 University Ave., Suite 550
Clive, IA 50325
(515) 226-9956
www.peschongteam.com

STEW HANSEN BUICK GMC

Steve Dahms
9060 Hickman Road
Clive, IA 50325
(515) 217-3600
www.stewhansenbuickgmc.com

STONE CREEK HOTEL AND CONFERENCE CENTER OF DES MOINES

Leo Murphy
5291 Stoney Creek Court
Johnston, IA 50131
(515) 334-9000
www.stoneycreekhoteles.com/hotel/des-moines



**VOTED
METRO'S
BEST
BANK
THANK YOU!**



**LUANA
SAVINGS BANK**

☎ 515.987.2116

📍 LuanaSavingsBank.com

➡ 16390 Holcomb Ct.
Clive, IA 50325



**Member
FDIC**

View our great CD rates and loan services at LuanaSavingsBank.com

MEMBERSHIP DIRECTORY

alphabetical

STUFF ETC QUALITY CONSIGNMENT

Jody Hagerty
8700 Hickman Road
Clive, IA 50325
(515) 251-8408
www.shopstuffetc.com

SULLIVAN & WARD, P.C.

Amanda James
8601 Westown Parkway, Suite 200
West Des Moines, IA 50266
(515) 244-3500
www.sullivan-ward.com

SUPERSTORM RESTORATION

Chandler Steffy
3300 101st St.
Urbandale, IA 50322
(515) 225-4880
www.superstormrestoration.com

TBL PRINT

Ken Chebuhar
7705 University Ave.
Clive, IA 50325
(515) 279-1499
www.tblprint.com

THE DANA COMPANY

Cory Holland
12345 University Ave., Suite 300
Clive, IA 50325
(515) 224-4391
www.thedanaco.com

THE IOWA CLINIC

Summer Bondi
5950 University Ave.
West Des Moines, IA 50266
(515) 875-9000
www.theiowaclinic.com

THE LIQUOR CABINET

Sean David
9761 University Ave.
Clive, IA 50325
(515) 528-2036
www.facebook.com/theliquorcabinet515

THE OTHER PLACE

Chanelle Hill
12401 University Ave.
Clive, IA 50325
(515) 225-9494
www.theotherplace.com

THE SALVATION ARMY CAPITAL AREA COORDINATION OFFICE

Tamyra Harrison
1400 N.W. 100th St.
Clive, IA 50325
(515) 282-3599
www.centralusa.salvationarmy.org/desmoines

NEW YEAR NEW FLOORS DIRECT.

SAY YES TO PAYING LESS

YOUR LOCAL SOURCE FOR AFFORDABLE CARPET, TILE, VINYL, HARDWOOD,
LAMINATE AND PROFESSIONAL INSTALLATION!

2239 NW 108th St, Clive, IA 50325

FLOORS DIRECT

CALL TODAY!

(515) 270 3885



TRIPLETT OFFICE SOLUTIONS

Tom Triplett
3553 109th St.
Urbandale, IA 50322
(515) 270-9150
<https://triplettts.com>

TRIUMPH MARTIAL ARTS

Matt White
2023 N.W. 92nd Court, Suite A
Clive, IA 50325
(866) 648-8480
www.triumphma.com

TWO MEN AND A TRUCK

Kara Berhow
2601 104th St., Suite 400
Urbandale, IA 50322
(515) 276-7170
www.twomen.com

TWO RIVERS BANK & TRUST

Semsa Didic
4320 Westown Parkway, Suite 100
West Des Moines, IA 50266
(515) 223-3500
<http://tworivers.bank>

WAGGONER PEDIATRICS OF CENTRAL IOWA

Sam Waggoner
2555 Berkshire Parkway, Suite A
Clive, IA 50325
(515) 987-0051
www.waggonerpediatrics.org

WALNUT CREEK FAMILY YMCA

Greg Voss
948 73rd St.
West Des Moines, IA 50265
(515) 224-1888
www.dnymca.org/locations/walnut-creek-family-ymca

WALNUT RIDGE

Ann Marie Habhab
1701 Campus Drive
Clive, IA 50325
(515) 457-1111
www.preshomes.org/our-communities/walnut-ridge

WAUKEE COMMUNITY SCHOOLS

Brad Buck
560 S.E. University Ave.
Waukee, IA 50263
(515) 987-5161
www.waukeeschools.org

WAUKEE-CLIVE VETERINARY CLINIC

Dr. Jamie Bunn
15151 Hickman Road
Clive, IA 50325
(515) 987-4552
www.waukee-clivevet.com

There is No Place Like the Other Place

WWW.THEOTHERPLACE.COM EST. 1970 OPEN 11AM DAILY

**JOIN
OUR
TEAM!**

**Scan for
Menu!**





**OVEN-BAKED SUBS - PASTA
SANDWICHES - SOUPS - SALADS
AND MUCH MORE!**

PIZZA & SPORTS

DINE IN OR TO GO
DOORDASH FOR DELIVERY OPTIONS

Clive, IA 12401 University Ave. 515-225-9494

ACHESON AUTO WORKS IS READY TO HELP YOU!



PROUDLY SERVING OUR VALUED CLIENTS SINCE 1947

General Repair
Preventive Maintenance
Engine Diagnostics • Brake Repair
Suspension Repair
Wheel Alignments • All Vehicle Flushes
Collision Repair & Refinishing

**EARN REWARDS
CASH ON
FUTURE REPAIRS!**



**515.223.4300 • 8000 UNIVERSITY BLVD, CLIVE
WWW.ACHESONAUTOWORKS.COM**

MEMBERSHIP DIRECTORY *alphabetical*

WEBSPEC

Jeremiah Terhark
5907 Meredith Drive
Urbandale, IA 50322
(515) 334-9544
www.webspec.com

WELLS FARGO CLIVE

Sanita Dzafic
9801 University Ave.
Clive, IA 50325
(515) 237-5809
www.wellsfargo.com

WEST DES MOINES COMMUNITY SCHOOLS

Matt Adams
3550 Mills Civic Parkway
West Des Moines, IA 50265
(515) 633-5025
www.wdmcs.org

WESTSIDE AUTO PROS

Joe Jerkins
1901 N.W. 92nd Court
Clive, IA 50325
(515) 225-9090
www.westsideautopros.com

WILDWOOD LODGE

Renee Nash
11431 Forest Ave.
Clive, IA 50325
(515) 222-9876
www.thewildwoodlodge.com

WINDSOR CLOCK & WATCH

Jeff Goemann
2035 N.W. 100th St., Suite F
Clive, IA 50325
(515) 277-0277
www.windsorclockandwatch.com

WOODLANDS CREEK SENIOR LIVING

Kristine Toms
12605 Woodlands Parkway
Clive, IA 50325
(515) 223-9755
www.woodlandscreek.com


ZENITH DESIGN + BUILD

Nicholas Donlin
1492 N.W. 86th St.
Clive, IA 50325
(515) 585-0237
www.zenithdesignbuild.com

ZOOM ROOM DOG TRAINING



Jared Mease
13101 University Ave., Suite 4
Clive, IA 50325
(515) 318-7780
<https://zoomroom.com/location/west-des-moines>

EXPERIENCE AWARD-WINNING CARE




*from professionals
who treat your family
as their own!*

ONLY TRUST YOUR CHILDREN
WITH THE BEST

Monday-Friday 8am-5pm
Saturday 9am-noon



515-987-0051

Waggoner Pediatrics of Central Iowa
Brian L. Waggoner, MD | Julie A. Waggoner, ARNP, CPNP
Andrea Dettmann-Spurgeon, ARNP, CPNP | Samantha K. Schwenneker, ARNP, CPNP
2555 Berkshire Parkway, Suite A, Clive • waggonerpediatrics.org
Putting families first for more than 25 years!



THE TAVERN

PIZZA * PASTA

A local favorite for over 75 years!

WE MAKE GREAT PIZZA!

& pasta, sandwiches, onion rings & more

Tavern Valley Junction
205 5th Street,
West Des Moines
(515) 255-9827

Tavern II
1755 50th Street,
West Des Moines
(515) 223-6700



**Stop In or Order Out
TODAY!**
www.tavernpizza.com




CATCH
DES MOINES



KEEP YOUR EYES PEELED, PEOPLE.

IF YOU SEE **DES BEST** AROUND DES MOINES, YOU'RE AT THE RIGHT PLACE. THIS EMBLEM MEANS SOMEWHERE OR SOMETHING HAS BEEN RECOGNIZED BY LOCALS AS THE BEST AROUND.



DISCOVER
**DES BEST OF
DES MOINES.**



THE DIFFERENCE IS

STABILITY.

When it comes to your finances, you're in it for the long haul. It's not always the easiest approach, but it's the smartest. It helps to have a bank that's committed to being with you every step of the way. Bankers Trust has been building long-lasting relationships in the Clive community for years. We believe you - and your money - deserve a bank that will stick around as your needs grow. Whether you're opening your first account, expanding your business, or safeguarding your assets for retirement, Bankers Trust understands and anticipates your needs. Sometimes even before you do. **Contact us or stop by our Clive branch today.**



BANKING | LENDING | WEALTH MANAGEMENT

11111 University Ave., Clive
(515) 222-2000 | BankersTrust.com

Multi-lingual Assistance: Bosnian Spanish,
and Vietnamese