

2025-2026

THE WAUKEE

FREE

SOURCE

YOUR ESSENTIAL HANDBOOK FOR LIVING IN WAUKEE



- FESTIVALS AND FUN
- COUPONS
- NEED TO KNOW
- WAUKEE TRIANGLE
- DAY OUT AROUND TOWN

PRSRT STD
 ECRWSS EDM
 U.S. POSTAGE
 PAID
 BIG GREEN
 UMBRELLA MEDIA
 RESIDENTIAL CUSTOMER
 BIG GREEN
 UMBRELLA MEDIA
 8101 Birchwood Ct. Ste. D
 Johnston, Iowa 50131

PUBLISHED BY
 WAUKEE
Living
 MAGAZINE

PHOTO COURTESY OF TIM HANSON, BARE NECESSITIES OF LIFE PHOTOGRAPHY



OUR PRICE IS
COMMITTED TO YOU.

We're committed to you for life! We promise to never increase your monthly internet rate.

Mi-Fiber is a local internet provider using fiber optic technology to bring the future of broadband right to your door.

mi·fiber®

Technology to **power your life.** Support to **simplify it.**

QUESTIONS? Give us a call today!

515.850.0500

464 114th St. • Urbandale, Iowa

**Make
Mi-Fiber
Your Fiber.**





Membership Pays

As a financial cooperative, GreenState's cooperative structure benefits everyone. Through competitive pricing and low fees, millions of dollars each year goes back into the pockets of members. Even non-members benefit from the competitive financial services landscape in our state.

Stop by to meet with our team of financial experts

**Rewards Checking • CDs & IRAs
Money Markets • Insurance
Home / Auto Loans • Credit Cards
Investments & Trust Services • Business Loans**



Did You Know?

GreenState is consistently ranked in the Top 1% Nationally for returning profits with better rates & lower fees. That means one of the Top financial institutions in the country, is right here in Waukee.



GreenState CREDIT UNION

1085 E Hickman Road, Waukee
515-330-4740

ANSWERS TO YOUR QUESTIONS

We are proud to bring you the Waukee Source, an annual guide for residents of Waukee provided by the publishers of Waukee Living magazine and the local businesses that advertise their goods and services in these pages.

In this easy-to-use publication, you will find answers to the many questions you have as a resident in the community. More than just a standard directory, The Waukee Source is a comprehensive

resource for those who wish to know who their city council representative is, who to contact at various clubs and organizations, what churches are in town, or what local events are planned for the next year.

In addition, we provide local historical information on the city, as well as details on city parks, the library and other various entities, complete with "numbers to know" should you need to reach out.

Maybe most importantly, we hope you patronize the local businesses advertising their goods and services to you. They know you have lots of options to spend your dollars throughout the metro, but your loyalty to them is truly appreciated. We are a small business, too, and we value the longstanding relationships we have built with our advertisers and our readers. Our goal in publishing The Waukee Source is to help you enjoy living in Waukee even more than you already do.

If you like this guide, be sure to thank the local advertisers and tell them how much you appreciate the information and their support. If you would like additional copies of The Waukee Source, contact Shane Goodman at 515-953-4822 ext. 305 or shane@dmcityview.com.

Of course, things can change a lot in a year's time, so be sure to contact the individual entities listed for updates. We try our best to include as much information as possible, but if you notice any errors or omissions, contact editor Tammy Pearson at 515-953-4822 ext. 302 or tammy@iowalivingmagazines.com.

Be sure to place this guide in a spot where you can easily find it and refer to it often. And then get out and enjoy everything Waukee has to offer! ■



UnityPoint Health – Waukee Medical Park

UnityPoint Health – Waukee Medical Park is a 75,000-square-foot multi-specialty clinic located at **2515 Grand Prairie Parkway** in Waukee.

UnityPoint Health – Waukee Medical Park provides a variety of medical services in one convenient location for Waukee and surrounding communities, including:

- › Family Medicine
 - › Internal Medicine
 - › Cardiology
 - › Obstetrics
 - › Gynecology
 - › Lab
 - › Imaging Services
- *More medical services will be added in 2025.

For more than 20 years, we've been a part of the vibrant and growing Waukee community. We have six other locations in Waukee:

UnityPoint Clinic - Express

950 East Hickman Road
Waukee, IA 50263
(515) 987-8256

UnityPoint Clinic - Express (Kettlestone)

1152 Southeast Ashworth Road
Waukee, IA 50265
(515) 264-2200

UnityPoint Clinic Family Medicine - Waukee

30 Hickman Road
Waukee, IA 50263
(515) 987-3447

UnityPoint Clinic OB/GYN - Waukee

40 Hickman Road
Waukee, IA 50263
(515) 263-9107

UnityPoint Clinic Pediatrics - Waukee

40 Hickman Road
Waukee, IA 50263
(515) 987-6610

UnityPoint Health Physical Therapy - Waukee

818 Southeast Alice's Road
Waukee, IA 50263
(515) 987-4571



CONTENTS

Common questions	7
History of Waukee	10
Mayor and city council	12
Waukee city parks.....	14
Golfing and ice skating.....	20
Raccoon River Valley Trail map.....	22
Trails.....	23
Waukee clubs and organizations	24
Waukee map.....	28
Waukee events.....	30
Waukee churches.....	36
Waukee Public Library.....	38
Waukee by the numbers	40
Waukee Community School District	44
Assistance programs	48
Numbers to know.....	54



Publisher..... Shane Goodman
 Advertising Director.....Jolene Goodman
 Editor..... Tammy Pearson
 Advertising Sales..... Martha Munro
 Creative Director..... Celeste Tilton
 Graphic Designer..... Jayde Vogeler
 Graphic Designer..... Nick Ruiz
 Digital Manager.....Beckham Miller
 Business Office Manager.....Brent Antisdell
 Distribution Manager.....Mike Chiston

Information supplied by the City of Waukee, local organizations and individuals. A copy of this publication is mailed to every address in the 50263 zip code. Additional copies are available at Waukee City Hall. To place advertising in the 2026-2027 Waukee Source, contact Jolene Goodman at 515-326-0082 or email jolene@iowalivingmagazines.com. Contents © 2025 Big Green Umbrella Media, Inc. All rights reserved. Nothing may be reprinted in whole or in part without permission of the publisher. 8101 Birchwood Court, Suite D, Johnston, IA 50131, 515-953-4822.





COMMON QUESTIONS

HOW DO I RENEW MY DRIVER'S LICENSE?

The Iowa DOT's Driver's License Office for Dallas County residents is located at 1156 S.E. Ashworth Road in Waukee. Appointments are required. You may also qualify for online renewal. Visit <https://iowadot.gov/locations/waukee> for additional information.

HOW DO I REGISTER TO VOTE IN DALLAS COUNTY?

If you have updated your Iowa Driver's License with your current Waukee address, you can register electronically at <http://sos.iowa.gov>. You may register to vote in person at the Dallas County Auditor's Office located at 210 N. 10th St. in Adel. Visit <https://dallascountyiowa.gov/503/Elections> to locate your polling place. For more information, call the Dallas County Elections Office at **515-993-6914**.

HOW DO I REGISTER MY PET?

Waukee residents can license dogs and cats online at petdata.com/waukee. Proof of rabies vaccination is required. The cost is \$15 each for altered pets and \$25 each for non-altered pets. If you do not have internet access and need to license a pet, call the City Clerk's office at **515-978-7904**. City Code allows for up to three dogs and three cats per household.

HOW DO I GET A LIBRARY CARD?

Visit the Waukee Public Library at 950 Warrior Lane. Children (with adult present) must be 5 or older to sign up for a card. Adults must show photo IDs. Visitors from out of state living in the Waukee area for less than six months are eligible for a temporary library card. You can apply for a library card in-person or online at waukeepubliclibrary.org. If you apply online, you will still need to come into the library to pick up the physical card. To receive your library card, bring your photo identification and proof of residency to the library's front desk.

HOW CAN I CHECK WHAT MY PROPERTY TAXES ARE?

If you are a homeowner with property taxes not built into a mortgage, call the Dallas County Treasurer, 800 Court St., Administrative Building, Adel, at **515-993-5808** to inquire about your respective property taxes.

IS THERE A CITY ORDINANCE ON MAINTAINING MY YARD?

Lawns and weeds should not be allowed to grow more than 8 inches high on developed property and 10 inches on undeveloped property. Violations will result in a fine or the cost of City-hired maintenance, whichever is greater.

CAN I HAVE A FIRE PIT?

Residents may maintain a fire with untreated wood for recreational, religious, ceremonial, cooking, warmth or similar purposes. Burning rubbish/refuse, which includes yard waste, tires, garbage or plastics, is not permitted.

COMMON QUESTIONS

WHAT IS THE SNOW REMOVAL ORDINANCE?

If snow is forecast for Waukee, the Public Works Department will implement the City's snow ordinance and emergency parking ban. This means that all Waukee street parking is prohibited. Those in violation are subject to a fine and/or towing. Property owners are expected to remove snow, ice and accumulations from sidewalks within 24 hours after the end of a weather event. The city will issue fines for those in violation of the snow removal ordinance.

WHEN IS GARBAGE AND RECYCLING PICKED UP?

Curbside solid waste and recycling pick-up both occur weekly at 6 a.m. or later. If you are moving into a newly constructed home, your containers will be delivered to you on Thursday of the week you take possession. If you are moving into an existing home, the containers should be left for you by the previous homeowner. The number of items you may set out is not limited. If you have more than will fit into the receptacle, you may bag it and place it alongside. There are special requirements for appliances, furniture and other bulky items. For more information, visit [Waukee.org/GarbageandRecycling](https://www.waukee.org/GarbageandRecycling).

DOES WAUKEE HAVE AN ANNUAL CLEAN UP?

For City of Waukee/ASI garbage and recycling customers, the city holds a free Spring Clean-Up Week in late April or early May each year for curbside collection of bulky items on customers' typical trash collection days. Residents in apartments or with private trash collection should talk to their property manager or trash collection service. On the Saturday at the end of spring cleanup week, residents can drop off household hazardous materials, tires, appliances and electronics for safe disposal. Timing and details can be found at [Waukee.org/SpringCleanUp](https://www.waukee.org/SpringCleanUp).

IS THERE YARD WASTE PICK UP?

Curbside yard waste pick-up occurs every Monday beginning at 7 a.m. from April through November. Visit [Waukee.org/YardWaste](https://www.waukee.org/YardWaste) for details on what is included and how to bundle items.

DOES THE CITY OF WAUKEE OFFER IRRIGATION METERS?

The City of Waukee offers two types of irrigation meters for purchase. Using an irrigation meter will save money from sewer charges on your utility bill if you frequently water your lawn or new sod or have a pool to fill. You'll submit meter readings online throughout the summer months.

- A portable irrigation meter that attaches to a 5/8-inch garden hose can be purchased at the Utility Billing Office at city hall.
- A permanent in-house irrigation meter can be installed by the Water Department after a plumber has appropriately diverted the plumbing. The typical use for this meter is if you have an underground irrigation system. Contact the Public Works Department at **515-978-7920**.

COMMON QUESTIONS

WHEN DO I NEED A BUILDING PERMIT?

Building permits are needed for new construction, renovations, fences, pools, etc. Visit [Waukee.org/BuildingPermits](https://www.waukeewi.gov/BuildingPermits) for the complete list of permits and the online application platform. For questions, call Community Development, **515-978-9533**, or stop by that office at 204 W. Hickman Road (behind City Hall).

HOW DO I REPORT A CONCERN I HAVE TO THE CITY?

The best way to submit city-related concerns is through the Report a Concern web module at [Waukee.org/ReportaConcern](https://www.waukeewi.gov/ReportaConcern). Submit non-urgent concerns or complaints at that link, and they will be routed to the proper department.

HOW DO I REPORT AN URGENT CONCERN?

Concerns should be directed to the appropriate department during normal business hours. See the list of city department phone numbers. For barking dogs, noise disturbances and other non-emergency issues, call non-emergency dispatch at **515-222-3321**. For power and streetlight outages, call **888-427-5632** or visit www.MidAmericanEnergy.com. For Public Works emergencies, such as gas leaks or water main breaks, call **515-249-1212**. For a Police or Fire emergency, dial **911**. Note that MidAmerican Energy is purchasing the Waukee Municipal Gas Utility and is expected to take over operations in late 2025. After that transition, contact the emergency line for MidAmerican for gas leaks.

IS THERE A CITY ALERT SYSTEM THAT I CAN SIGN UP FOR?

Visit [Waukee.org/Connect](https://www.waukeewi.gov/Connect) to sign up for notifications for everything from street closures to emergency alerts to recreation programs. You can also get an email newsletter to your inbox with the latest city news, important dates, community events and other things to know as a resident of Waukee.

HOW DO I GET CITY NEWS AND INFORMATION?

The city of Waukee puts out a wealth of information in a monthly bulletin in Waukee Living magazine, a monthly emailed newsletter and the newsletter in your monthly utility bill (print or linked online). You can sign up for the e-newsletters for general city information and a quarterly economic development update at [Waukee.org/Connect](https://www.waukeewi.gov/Connect). ■



EARLY DAYS OF WAUKEE



The Des Moines Valley Railroad was completed into Des Moines on Aug. 29, 1866. The railroad started from Keokuk in 1856, but, because of the Civil War, progress was slowed. Headquarters were in Keokuk, with D.W. Kilbourne serving as president and General Hugh Thompson Reid and Colonel Leighton listed as lessees.

These men visited Des Moines often to take care of the railroad interests. On April 13, 1869, a proposed route was announced in the Iowa Daily State Register. Leaving Des Moines, it was to enter Dallas County section 12, 78, 26 through section 2 and section 3 of that township and enter Walnut Township, section 34 and on into Greene County. New towns would be laid out.

On April 30, General Lewis Addison Grant and Major William Ragan and Co. bought the land around the railroad bed in Walnut Township, section 33, from Cyrus W. Fisher, the land on which the town of Waukee — originally called Shirley — was built. At the rate of “one mile a day,” the people of the land would soon be able to ship their farm products by rail to Des Moines and eastward.

In May 1869, the roadbed was laid, and the men working for Des Moines Valley Railroad were laying the rails. A coach car housed the men.

By June 2, it was reported that all the stations from Des Moines to the Northwestern Railroad line had been fixed and christened. First was Valley Junction; the second was Shirley, 9 miles from the Junction. The others were Dallas Center, Pierce’s Point, Perry, Rippey and Grand Junction at the Northwestern Road. Depots were to be erected as soon as a carpenter corps could do the work.

Twenty-five miles of track had been laid by June 13, and the first regular train went out on the tracks June 15. Shirley had been laid out in lots. One house was already erected with more soon to come.

The city was originally named Shirley, but officials in Keokuk insisted that it should have an Indian appellation, and Waukee was chosen instead.

Progress of Waukee moved quickly, and, a month later, the depot was built, as were eight or 10 residences in 320 acres.

Coal was first discovered in Waukee in 1869. One of the better known mines,

the Shuler Mine, was 387 feet deep, the deepest mine shaft in Iowa, and employed up to 500 people who were assisted by more than 30 mules. Many of the miners lived in parts of town called the "North Camp" and "South Camp," which are located on what is now Alice's Road.

Waukee was incorporated on Dec. 23, 1878. Its population in 1880 was 245. The 2023 census estimated population topped 31,500.

The Bank of Waukee was organized in April 1901.

The first telephone switchboard opened in 1902. School enrollment was 116 students in January 1907, and the town's population had grown to 340 in 1910. The first mention of consolidating the mine school and the city school was made in March 1915.

Waukee businesses in the early 1900s included general stores, a grocery store, a



The J.H. Carter Store was one of the first retail businesses in Waukee.

blacksmith, a hotel, barber shops, a candy shop, elevators, nurseries, drug stores, meat markets, a skating rink, a millinery shop, newspapers, car dealers and a variety of other businesses. ■

Source: Waukee Historical Society

WARRIOR LANES IS YOUR HOME FOR FUN IN WAUKEE!

PLAN YOUR PARTY TODAY!

Ask how you can **JOIN OUR TEAM!**

**OPEN BOWLING | GLOW BOWLING
BIRTHDAY PARTIES | YOUTH PROGRAMS
FOOD & BEVERAGE | LEARN TO BOWL
LEAGUE BOWLING | PRO SHOP**

WARRIOR LANES

ONLINE LANE RESERVATIONS WELCOME

190 SE Laurel Street
515.987.4840 • Waukee

WAUKEE CITY COUNCIL & MAYOR

Visit Waukee.org/CityCouncil for council-related information.



MAYOR Courtney Clarke

cclarke@Waukee.org
515-805-4703



Anna Bergman Pierce

apierce@Waukee.org
515-491-8259



Charlie Bottenberg

cbottenberg@Waukee.org
515-805-4991



Rob Grove

rgrove@Waukee.org
515-823-3227



Chris Crone

ccrone@Waukee.org
515-805-4992



Ben Sinclair

bsinclair@Waukee.org
515-805-4827

Regular City Council meetings are held the first and third Monday of each month at 5:30 p.m. at Waukee City Hall, 230 W. Hickman Road, and on Zoom. Find the link in the agenda at Waukee.org/CityCouncil.

tropical SMOOTHIE CAFE
YOU'RE ON TROPIC TIME

ORDER ONLINE!
LOCALLY OWNED!

www.tropicalsmoothiecafe.com
426 E. Hickman Rd, Waukee | 515-452-8089

The world always looks **BRIGHTER** from behind a *Smile.*

Lisa R. Kurtz, DDS

Tina S. Kurtz, DDS

WAUKEE FAMILY DENTISTRY

Contact us to Learn More!
515.987.1305

85 N. Warrior Ln, Waukee

waukeefamilydentistry.com



Making a life in Waukee?

Dupaco Credit Union is here to help your money keep up!

You've probably got a lot going on. Whether you're saving for the future, borrowing for a dream or just trying to stay on top of things, we're a financial cooperative that aims to help make the money part a little easier. Less stress. More confidence. Real people you can talk to.

Join today at dupaco.com/join or visit 1090 E. Hickman Rd., Waukee.



Dupaco
CREDIT UNION

Federally insured by NCUA.

WAUKEE CITY PARKS



ALICE NIZZI PARK

715 Dellwood Drive

Alice Nizzi was a Waukee community fixture who ran the revered Alice's SpaghettiLand restaurant throughout the mid-20th century. The design of this park is a nod to Nizzi's legacy and the rich history of Waukee's coal mining camps. Constructed in 2020, this 3.17-acre neighborhood park features a spaghetti and meatballs-themed playground, rubberized surfacing, sidewalks, a shade structure and historical elements.

CENTENNIAL PARK

1255 Warrior Lane

Centennial Park offers a wide range of recreational opportunities. The 33-acre park is equipped with two sand volleyball courts, three ball diamonds, a 12-hole disc golf course, a new large playground, a small playground, one basketball court,

a gaga ball pit, a creek, a covered bridge, one open shelter and one enclosed shelter. Plenty of open green space is available for playing soccer or enjoying a picnic. Centennial Park is also home to several community festivals each year.

FOX CREEK PARK

522 N.E. Westgate Drive

Fox Creek Park is Waukee's third largest park (18 acres). Trails totaling 3/4 of a mile in length connect Grant Ragan Elementary to the surrounding neighborhoods. Visitors will also notice 2 acres of prairie plantings which aim to help the Monarch butterfly population increase. Other amenities at the park include the Fox Creek Splash Pad, the 80-person capacity Fox Creek Pavilion, a tennis court, four pickleball courts, play pods for different ages, parking and more.

WAUKEE CITY PARKS

G.E. DAVIS PARK

Walnut and Seventh streets

G.E. Davis Park sits in front of the Waukee Community Center and honors George Edward Davis. Davis served as the mayor of the City of Waukee for 30 years. The park is also home to the Waukee Veterans Memorial, which was a gift given in 2017 from the Waukee Leadership Institute. It honors all branches of the U.S. Military as well as the Waukee Police and Fire departments.

GLYNN VILLAGE PARK

2255 S. Warrior Lane

The Glynn Village Park is a neighborhood park featuring a large playground structure with connecting towers and large slides, rubber surfacing, parking, a drinking fountain and seating. Follow the trail back into the neighborhood to enjoy a natural playscape.

GRANT PARK

605 S.E. Driftwood Lane

Grant Park is a 1.5-acre neighborhood park. It includes walking paths, playground equipment and a half-court basketball area.

HISTORIC TRIANGLE PARK

Ashworth Drive and Sixth Street

Triangle Park is a half-acre park nestled in the heart of downtown Waukee featuring a large gazebo and colorful benches. The park space serves as host to many community events throughout the year, including the Farmers Market from June through September.



PAINTED WOODS PARK

Coming in 2025

Painted Woods Park is an 8.5-acre park in the Painted Woods West neighborhood off Indian Ridge Drive, near the intersection with Fieldstone Drive. The design includes a unique treehouse-style play space, half basketball court and trails. A series of treehouse-style play structures, some reaching as tall as 16 feet, will be installed among existing trees. Inclusive features will enable children of varying abilities to play together. A small in-ground trampoline can accommodate mobility aids, and a bowl swing at transfer height will enable wheelchair users to play outside their chair.

RIDGE POINTE PARK

655 S.E. Legacy Pointe Boulevard

Ridge Pointe Park is a 21-acre park that serves as a flat open field for soccer practice and open play. It features two

WAUKEE CITY PARKS

playgrounds, a sand volleyball court, a walking path, a backstop, a pavilion (available to rent year-round with heat and air conditioning) and a Little Free Library where you can share your books with others in the neighborhood.

SPRING CREST PARK

Part 1 Coming in 2025

Spring Crest Park will be a 13-acre park near 11th Street and Spruce Street in western Waukee. Construction will be split into two phases. Phase 1 covers about 5 acres and includes a playground with three zones to appeal to different ages while keeping a strong line of sight for adults visiting the park with multiple children. There will also be some trails, restrooms, a shade shelter and greenspace. A future phase will add a sand volleyball court, pickleball courts, half basketball court, rental pavilion and additional trails to connect the two areas. Timeline on that phase is yet to be decided.

SONGBIRD PARK

Behind 1070 First Place, east of Southview Drive

Songbird Park is located behind a residence and has been recognized as a Backyard Wildlife Habitat and certified as such by The National Wildlife Federation. This 3-acre habitat is certified because of the conscientious planning, landscaping and sustainable gardening where wildlife may find quality habitat, food, water, shelter and places to raise their young. You can access Songbird Park from the concrete steps on the north side of the residence at 1070 First Place.



Trailside Dog Park

SOUTHFORK PARK

Southbranch Drive

Southfork Park is a 3-acre neighborhood park with amenities including an updated playground, the Gordon Christianson open shelter, picnic tables, a grill and benches. A Little Free Library was installed for neighbors to share and borrow their favorite books.

STRATFORD CROSSING PARK

1250 N.W. Yorktown Drive

Stratford Crossing Park is a 7-acre neighborhood park that includes a basketball court, restrooms, play equipment — including a zip line — greenspace and a small shelter.

SUGAR CREEK PARK

2955 Serenity Drive

Sugar Creek Park is located near Serenity Drive and Ashworth Road across from Sugar Creek Elementary. The 4.92-acre



neighborhood park includes pickleball courts, playground equipment, a shelter and trails.

TRAILSIDE DOG PARK

590 S.E. Brick Drive

The 4-acre site is located just east of Alice's Road, directly south of the popular Heart of the Warrior Trail. The Trailside Dog Park includes public restrooms, 21 parking stalls, separated large/small dog areas, a drinking fountain, dog waste stations, a shade structure, concrete walking paths and open green spaces. It also features a trail connection and bicycle racks. Learn more about purchasing a park pass online at Waukee.org/DogPark.

TRIUMPH PARK

700 Douglas Parkway

Located next to Northwest High School, this 80-acre outdoor sports complex includes 12 softball/baseball fields, practice/warm-up spaces, a large pond, playground equipment, parking and other amenities. The park has inclusive amenities, including a Miracle League Ball Field, EPIC playground and ADA-compliant fishing pier.

WARRIOR PARK & SLEDDING HILL

1050 Fourth St.

Warrior Park is a 7-acre park with four ball diamonds, one playground and a specially engineered sledding hill for winter activities. For easiest access and parking, turn off of Sixth Street next to the Waukee Cemetery.

WESTOWN MEADOWS PARK

2445 S.E. Willowbrook Drive

Westown Meadows Park is a neighborhood park that features a playground, paved walking paths, landscaping, parking and a restroom/storage room building. This modern park project also includes a water play feature and shaded picnic table areas.

WINDFIELD PARK

114 Windfield Parkway

Windfield Park is equipped with a full basketball court, a backstop for baseball or softball, age-appropriate play areas including an accessible swing, a Little Free Library and an open shelter. Walking and biking paths make it easier to connect from the park to the Heart of the Warrior Trail. ■

WELCOME TO OUR MEDICAL SPA!



Skincare, waxing, weightloss, laser, IV and injectable studio at the new location in the historic triangle of Waukee



BOOK TODAY!

540 Walnut St, Waukee



HEARTLAND CO-OP
Helping farmers produce & market profitably.

Gas, LP storage & delivery, bagged feed including pet food, lawn care products, bird feed and supplies.

529 Ashworth Drive • 515-987-4511

1

2

HISTORIC *Wau*



Visit the
FARMERS MARKET
 Triangle Park
 4-7PM
 Wednesdays in June through September



5

6



Specializing in workers' compensation, personal injury, wills, estate planning, divorce, criminal, real estate & small business

McKINNEY LAW OFFICES, PC
 A PROFESSIONAL LAW CORPORATION

515-987-4578 | 480 SIXTH STREET | WAUKEE
 100 YEARS OF COMBINED EXPERIENCE



ALWAYS FRESH, ALWAYS LOCAL



BEEF • PORK • POULTRY
 CURED MEAT • SAUSAGES
 COOKING ACCESSORIES
 BEER • WINE



WWW.OLDSTATIONCRAFTMEATS.COM
 450 6TH ST. WAUKEE • 515-452-0150

INTEGRITY
Financial Group

INSURANCE | ACCOUNTING | INVESTMENTS

520 Walnut St, Waukee

515-987-9598

WWW.IFGTODAY.COM

3



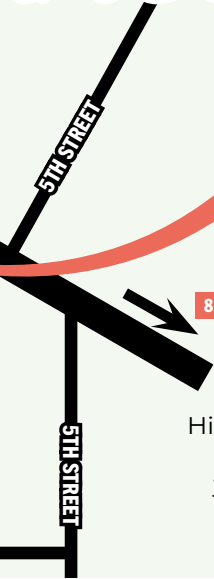
A RELAXED & HAPPY ATMOSPHERE

Come out for fresh pizza, steak night, breakfast or a drink!

360 6th Street, Waukee • 515-518-2820

4

Waukee Triangle



Historic Triangle Park is a half-acre park nestled in the heart of downtown Waukee. Surrounding by businesses and featuring a large gazebo and more. The park space serves as host to many community events throughout the year. Stop by today. There is something for everyone!

8

7

YOUR HOMETOWN HARDWARE STORE

Since 1878

Waukee Hardware & Rent-it Center

Do it Best

515-987-4574 • 380 S. 6th Street

waukee.doitbest.com

FREE ship to store!

OPEN MON-FRI 7:30AM-6PM, SAT 7:30AM-5PM, SUN 11AM-4PM

8

OFFERING YOU THE BEST SOLUTIONS FOR YOUR CAR AND AUTO REPAIR NEEDS

LEAD MOTORS

Are you in need of an oil change, tires, brakes or general auto repair?

395 Ashworth Drive, Waukee

515-987-8176

GOLFING

SUGAR CREEK MUNICIPAL GOLF COURSE

1505 Sixth St.

The city's nine-hole, par-34 golf course is typically open mid-March through mid-November, weather permitting. Sugar Creek is a great course for beginners and provides a challenge for seasoned golfers as well. A practice facility including a driving range, putting green and chipping area is also available. Sugar Creek offers leagues for men and women, instructional camps for junior and peewee golfers, and personal instruction for golfers of all ages. Tee times are recommended but not required. Daily hours are 7 a.m. to dusk. The driving range opens when the clubhouse opens in the morning and closes at dusk. It is closed Wednesday mornings for maintenance. To schedule a tee time, call the Clubhouse at **515-987-5247**, or go online to **Waukee.org/SugarCreekGolfCourse**.

ICE RINK

Waukee's outdoor ice rink is located at **Grant Park, 605 S.E. Driftwood Lane**. The Waukee Ice Rink is open during winter months when weather permits. This public rink, which measures 80- by 40-feet, was donated in partnership between the Iowa Wild and Wells Fargo in 2017.

During winter months, ice is open for hockey from dawn to noon and open skating hours from noon to dusk. The rink is free for public use. A green sign will be posted at the gate to indicate that the rink is open. A red sign will be posted when the rink is closed. All skaters are advised that they are skating at their own risk. The rink is not supervised. ■



PAINT SERVICES



BODY WORK



COLLISION REPAIR

DOES YOUR CAR HAVE DAMAGE FROM AN UNFORTUNATE ACCIDENT?

CALL OLSON'S BODY & PAINT.

We specialize in providing affordable and timely autobody work when your car needs special attention.

SINCE 1980

OLSON'S
SINCE 1980

Call today for a
FREE ESTIMATE
515-987-1735



45 YEARS IN BUSINESS

555 W HICKMAN RD, WAUKEE



The Iowa Clinic has two Waukee locations to serve you.

Our South Waukee location is conveniently located off I-80 and Grand Prairie Parkway, with departments including:

- > Family Medicine, Internal Medicine and Pediatrics
- > OB/GYN
- > Physical Therapy
- > Waukee Surgery Center
- > And more

URGENT CARE

Open 7 days a week

Mon-Fri 7am-7pm

Sat & Sun 8am-3pm



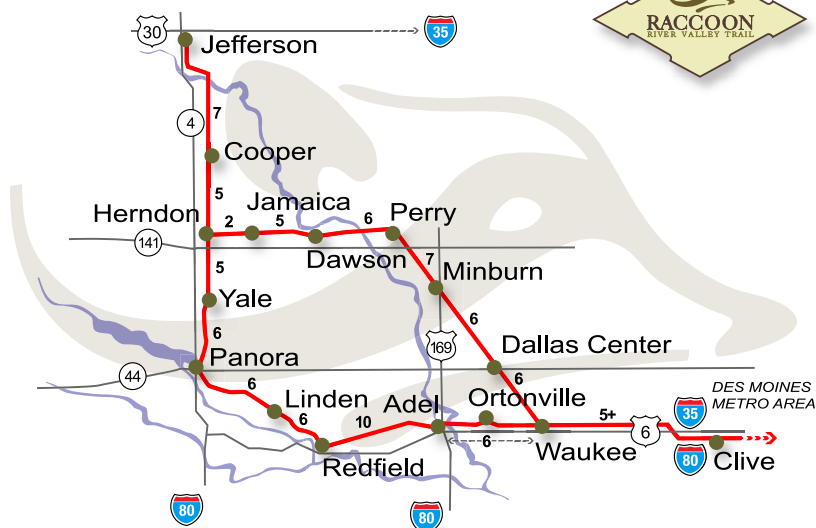
You can find
family medicine and
dermatology at our
North Waukee clinic at
842 NE Alice's Road.



 515.875.9000  iowaclinic.com

RRV TRAIL MAP

The Raccoon River Valley Trail Map



TRAILHEADS: Parking and Permit tubes

Waukee:	Jct. of Hwy. 6 & Co. Rd. R22 Restrooms, maps, information
Ortonville:	Jct. of Hwy. 6 & Co. Rd. R16
Adel:	18th St. parking lot—restrooms maps, camping, information
Redfield:	Restored Depot N. of Co. Rd F60 - maps, water, restrooms, information, picnic tables, concessions
Linden:	Jct. of Co. Rd P30 and city park Restrooms, water, concessions
Panora:	SE 6th St. just off Hwy. 44 Picnic tables, water, restrooms (at nearby restaurant)
Yale:	SE edge of town off Co. Rd. F25 Restrooms, picnic tables, water, maps, information
Herndon:	Center of town, street parking. No city facilities.
Cooper:	Just off Co. Rd. E57, Center of town. In scale house of former elevator, -- water, restrooms
Jefferson:	Restored railroad depot on Co. Rd. E53 (E. Lincoln Way), east end of town – restrooms, water, campground
Jamaica:	South end of business district, food establishment, convenience store, bar
Dawson:	At the restored Dawson Depot, center of town, restrooms and water there, cold drinks in machine across the street
Perry:	Center of town, adjacent to historic railroad caboose displayed there, restrooms and water
Minburn:	West side of U.S. Highway 169, middle of town, depot being restored, restrooms, food establishments, bar, water
Dallas Center:	Center of town, east end of the business district, restrooms, food and cold drinks at nearby businesses

LEGEND: 2 MILEAGE MARKER

- TRAILHEAD
- IOWA HIGHWAY
- U.S. HIGHWAY
- ⬮ INTERSTATE HIGHWAY

Length: 89 total miles, with 72-mile interior loop
 Surface: Concrete or asphalt
 Grade: 1% to 2%
 Fees: Daily: \$2.00/person per day
 Annual: Jan-Dec \$10.00
 Free: Age 17 and under
 Free within city limits

TRAILS

Waukee offers 25 miles of trails that wind through Waukee to connect neighborhoods and residents to different parts of the community and neighboring trail systems. City officials invest in trails and greenways in an effort to make it easier for residents to travel by foot or bike in their own neighborhoods and beyond, fostering a greater sense of community. This investment also aims to support active pursuits through recreational opportunities and safety, ultimately promoting a healthy lifestyle. As part of that investment, the Prairie Rose Trail opens in summer 2025.

RACCOON RIVER VALLEY TRAIL

The RRVT was designated as “One of Iowa’s Great Places” by the Iowa Department of Cultural Affairs in January 2015. This honor came with a \$200,000 state grant that contributed to the development, design and installation of Waukee Railroad Pergola — “In the Shadow of the Rails” — a public art piece that illuminates the Waukee Trailhead. This trail features 89 miles of paved trail beginning in Waukee, winding through 14 other communities and looping back to Waukee.

HEART OF THE WARRIOR TRAIL

This trail starts northeast of Waukee’s Centennial Park and runs east-to-west through the city for 3 miles. The trail crosses Alice’s Road and connects to Clive’s Greenbelt Trail in Lions Park. With the widening of Alice’s Road, a trail underpass was constructed to provide a safer passage for trail users.



SUGAR CREEK TRAIL

This trail starts at the intersection of Warrior Lane and University Avenue and provides sweeping views of Waukee’s Sugar Creek Golf Course. The trail connects the southern Waukee neighborhood of Glynn Village to both Centennial Park and centrally located Waukee schools. A pedestrian bridge connects the Spyglass neighborhood to Centennial Park and beyond. The completion of the trail connects the previously isolated southern neighborhoods of Waukee to the central community.

KETTLESTONE TRAILS

These trails in the Kettlestone Development invite walkers and bicyclists to enjoy the nearly 6 miles of trails that currently wind through Kettlestone. Trail users can cross safely via pedestrian underpasses beneath both Grand Prairie Parkway and Westtown Parkway. Currently, the trail system connects the east side of Kettlestone near Holmes Murphy to the Kettleview Development on the west side and up into the neighborhoods to the north. ■

CLUBS & ORGANIZATIONS

DALLAS COUNTY HABITAT FOR HUMANITY

515-310-3966

dallascountyhabitat.org

IOWA STATE UNIVERSITY EXTENSION AND OUTREACH DALLAS COUNTY

28061 Fairground Road, Adel

515-993-4281

xdallas@iastate.edu

www.extension.iastate.edu/dallas

JEWISH FEDERATION OF GREATER DES MOINES

33158 Ute Ave., Waukee

515-987-0899

info@jewishdesmoines.org

www.jewishdesmoines.org

ROTARY CLUB OF WAUKEE

Meets each Thursday at 7 a.m. at Des

Moines Golf & Country Club, 1600

Jordan Creek Parkway, West Des Moines

info@waukeerotary.org

www.waukeerotary.org

WAUKEE AREA CHAMBER OF COMMERCE

208 W. Hickman Road, Waukee

515-978-7115

info@waukeechamber.com

www.waukeechamber.com

WAUKEE AMERICAN LEGION POST 737

Veterans meet the third Thursday at 7 p.m.

Auxiliary meets on the second Thursday at 7 p.m.

American Legion Riders meet the second Wednesday at 7 p.m.

Veterans Hall, 410 Sixth St., Waukee

Riders: alr.waukee.737@gmail.com



Expert Speech, Language & Swallowing Therapy for All Ages.



Speech Services for Kids

- Speech & Articulation
- Feeding & Swallowing
- Language Development
- Literacy
- Voice & Stuttering

Speech Services for Adults

- Speech & Articulation
- Feeding & Swallowing
- Language/Cognitive Rehabilitation
- Literacy
- Voice & Stuttering

CONNECT
Therapy

ACCEPTING NEW CLIENTS!

www.connecttherapyiowa.com

9325 Bishop Dr Suite 110, W. Des Moines

515-207-2526 • info@connecttherapyiowa.com



CLUBS & ORGANIZATIONS

WAUKEE AREA HISTORICAL SOCIETY

info@waukeehistory.org
waukeehistory.org
www.facebook.com/
WaukeeAreaHistoricalSociety

WAUKEE BETTERMENT FOUNDATION

waukeefoundation@gmail.com
www.waukeebetterment.org

WAUKEE FAMILY YMCA

210 N. Warrior Lane, Waukee
515-987-9996
dmymca.org/locations/waukee-family-ymca

WAUKEE LIONS CLUB

Meets the first and third Thursdays of the month at 6:30 p.m. at the Waukee Community Center, 675 Walnut St.
www.e-clubhouse.org/sites/waukee
waukeelions@gmail.com
www.facebook.com/waukeelionsclub

WAUKEE AREA ARTS COUNCIL

www.waukeeartsfestival.org

WAUKEE LEADERSHIP INSTITUTE

waukeeleadership@gmail.com
www.waukeeleadership.org

WAUKEE OPTIMIST CLUB

waukeeoctimist@gmail.com
www.facebook.com/WaukeeOptimist

WAYPOINT RESOURCES & CLOTHING CLOSET

Food Pantry, Free Clinic, Clothing Closet, Seasonal Programs
1155 S.E. Boone Drive, northwest entrance of Westview Church, Waukee
515-987-5523
<https://waypoint.care> ■



ONE STOP SHOP
LIQUOR ★ BEER ★ WINE
TOBACCO ★ VAPORS

STAR LIQUOR
& TOBACCO + Vapors

We have all your
FAVORITE BRANDS
IN STOCK
at **GREAT PRICES**

515-987-9718 • 23 Carefree Lane, Waukee

Sunday • 8:30am - 9:30pm
Mon - Thurs • 8:30am - 10:30pm
Fri - Sat • 8:30am - 11:30pm



eat • drink
relax • play

Fast Lunches &
Breakfast Sat/Sun: 9am - 1pm

Patio Music Wednesdays,
Trivia Thursdays,
Karaoke Fridays,
Live Music Saturdays

LARGE PATIO & PLENTY
OF BIKE PARKING!

MICKEY'S
IRISH PUB
waukee

515.987.9604 • 50 SE Laurel, Waukee
— mickeysaukee.com —

LADIES

Day Out in Waukee!

Stay close to home and have an invigorating day with friends and family shopping local with these businesses.



IRON & OARS

1206 SE University Ave, Waukee | (515) 210-9139

IRON & OARS combines STRENGTH, ROWING, and FLEXIBILITY into a challenging, high-intensity, no impact, FUN full-body workout for all fitness levels!

Scan the QR Code to start with a free class!



HEART OF WARRIOR TRAIL

Starts northeast of Waukee's Centennial Park

The Heart of the Warrior Trail helps to unify the Waukee community by providing a continuous trail through the core of established neighborhoods in the city.





TRAILSIDE DOG PARK

590 SE Brick Drive, Waukee

The four-acre site, includes public restrooms, 21 parking stalls, separated large/small dog areas, a drinking fountain, dog waste stations, a shade structure, concrete walking paths and open greenspaces.

BUDU/BU SMOKE SHOP & ART COLLECTIVE

43 NE Carefree Ln, Waukee | 5967 Ashwort Rd, WDM

Budu\Bu is a vibrant thrift store offering trendy clothes, shoes, accessories, jewelry, local art and more. Stay fashionable on a budget and stand out with one of a kind items. *Stop in today!*



WAUKEE POWER EQUIPMENT

112 W Hickman Road, Waukee | (515) 987-2222

Tackle your DIY to do list with the right tools! If you need help in making your selection, call or stop in – we're always ready to help!



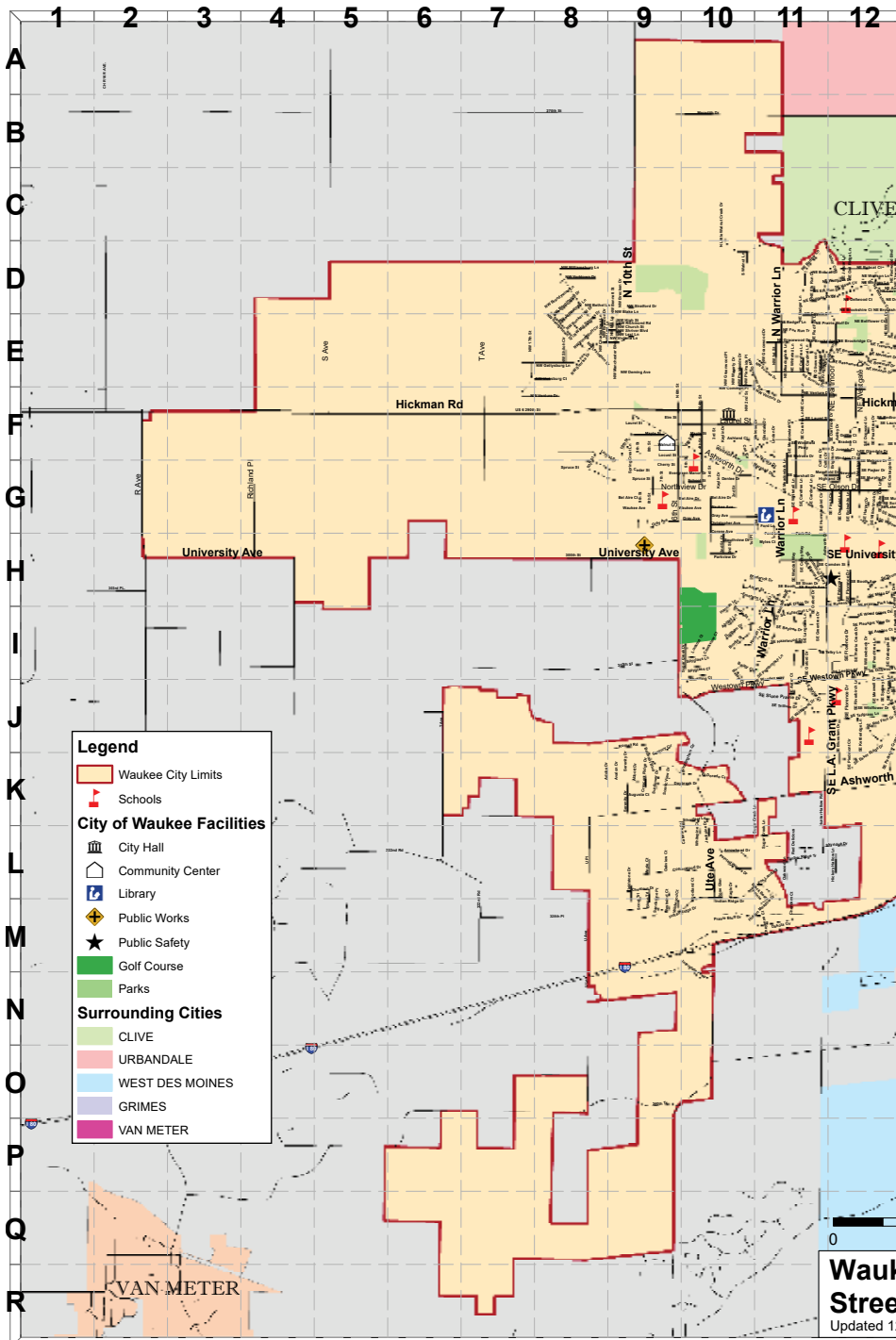
THE PALMS THEATRES & IMAX

200 NE Westgate Dr, Waukee | (515) 444-5006

One of the largest IMAX screens in the Midwest, outfitted with dual Laser Projection System and 12 channel immersive sound. UltraLux Loungers with optional heating settings in every auditorium



MAP OF WAUKEE



OPEN FISHING

City of Waukee staff members have been working closely with the Iowa Department of Natural Resources (DNR) to provide accessible, quality fishing opportunities in the Waukee community.

Three ponds in Waukee's Kettlestone Development are stocked with bluegill and largemouth bass; of those, the two located north of Holmes Murphy, the Kettlestone Commons Ponds, are stocked with trout. The Tallgrass Pond is located west of Grand Prairie Parkway and south of Tallgrass Lane. Anglers are encouraged to access these ponds via the Kettlestone Trails System.

Triumph Park has an 11-acre pond with ADA-compliant accessible fishing pier. It is typically stocked with trout twice a year.

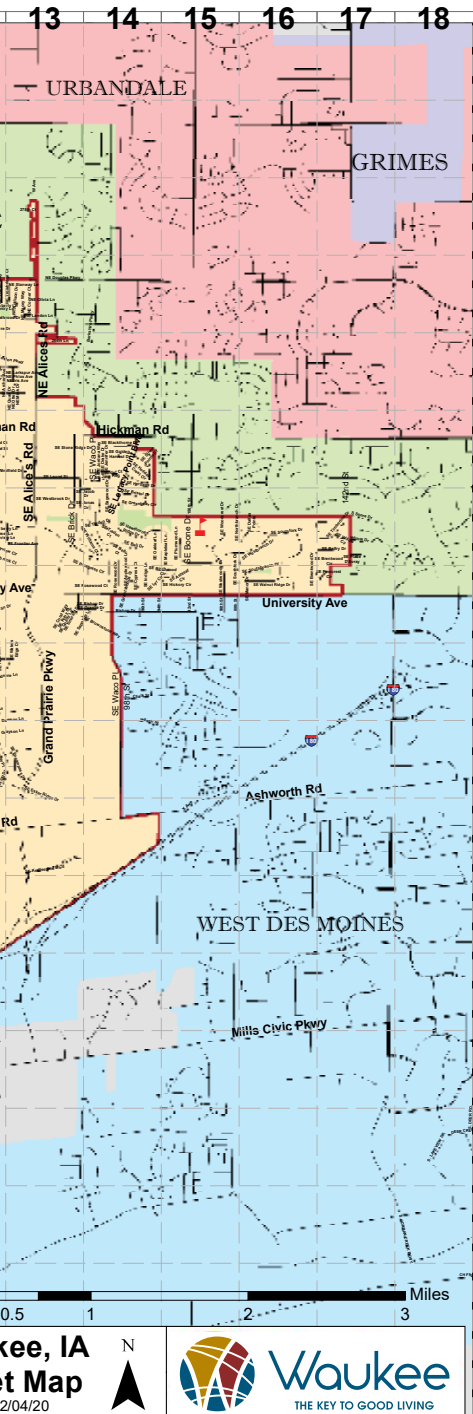
Additional ponds include Prairie Rose Pond, located north of Douglas Parkway and west of N. Warrior Lane and Waukee Towne Center Pond south of Target.

Those wishing to buy a fishing license, explore maps, get Iowa fishing regulations and learn more can visit iowadnr.gov/fishlocal. In Waukee, residents and visitors can purchase fishing licenses in person at Fleet Farm, located at 1300 S.E. Kettlestone Blvd.

Per Iowa's fishing regulations, the daily limit for bluegills is 25. The daily limit for bass is three, but bass must be at least 15 inches in length to keep. Releasing bass back into the waterbody helps maintain healthy fish populations.

Kayaks, paddle boats and motorboats are not allowed on the Kettlestone Commons and Tallgrass ponds.

For a map of fishing spots, visit Waukee.org/Fishing. ■





JULY 2025

FARMERS MARKET

**Wednesdays, June through September
4-7 p.m.**

Historic Downtown Triangle

Music by: July 26, Remedy Quartet; July 23, Marilyn Herome; July 30, Cold Pizza & Day Old Bread

www.facebook.com/waukeefarmersmarket

WAUKEE ARTS FESTIVAL

Friday and Saturday, July 18-19

Centennial Park

The Waukee Arts Festival, offered by The Waukee Arts Council, continues to grow and, this year, has reached its capacity of 140 booths. This year features more food trucks, extended vendor hours of 5-8 p.m. on Friday, and a variety of family-fun activities. Headlining bands are Dickie followed by the Nadas on Friday evening and, for Saturday evening's concert, Lady Revel followed by Rock ala Carte: a Queen tribute band. A full line up of live entertainment starts at 10 a.m. The WaukeeFine Arts Footrace also returns. waukeeartsfestival.org

HOT DOGS AND HOT RODS

Saturday, July 19 • noon

Shottenkirk Chevrolet,
755 Hickman Road, Waukee

Get ready for the Third Annual Hot Dogs & Hot Rods Car Show at Shottenkirk Waukee Chevrolet. Enjoy fun for the whole family, furry friends included. Bring your crew out for a day of classic cars, delicious hot dogs, vendors, kids activities and live music that'll keep you grooving all day long. Register your vehicle at <https://m.signupgenius.com/#!/showRSVPSignUp/10C0B4BA9AB23A2FBC61-55204889-hotdogs>.

YOGA IN THE PARK

Second and fourth Saturdays

9:30 a.m. • June through September

Windfield Park Open Air Shelter,
114 Windfield Parkway

Join local, certified yoga instructors for Yoga in the Park. Bring a yoga mat or towel, water bottle and \$5 per person. For ages 12 and older.



Winterfest

AUGUST 2025

PUBLIC SAFETY DAY

Tuesday, Aug. 5 • 5-7:30 p.m.

Waukee Public Safety Building,
1300 S.E. L.A. Grant Parkway

The Waukee Police and Fire Departments join forces for Public Safety Day. Bounce on inflatables and get up close to fire trucks. Sit in a police car and meet police officers. Enjoy food and a fun night of public safety activities.

FARMERS MARKET

**Wednesdays, June through September
4-7 p.m.**

Historic Downtown Triangle

Music by: Aug. 6, Jeff Stagg; Aug. 20,
Mara Louk; Aug. 27, Patricia Holly.

www.facebook.com/waukeefarmersmarket

MOVIES IN THE PARK

Friday, Aug. 8

"The Wild Robot" (PG)

Centennial Park Open Air Shelter,
1255 Warrior Lane

Enjoy Hollywood's biggest hits under the stars with Movies in the Park. Movies in the Park are free and provide an abundance of entertainment. Showtime is at dusk (approximately 8:45 p.m.) in Centennial Park. Bring lawn chairs, blankets and refreshments.

YOGA IN THE PARK

**Second and fourth Saturdays,
9:30 a.m., June through September**
Windfield Park Open Air Shelter,
114 Windfield Parkway

Join local, certified yoga instructors for Yoga in the Park. Bring a yoga mat or towel, water bottle and \$5 per person. For ages 12 and older.

SEPTEMBER 2025

FARMERS MARKET

**Wednesdays, June through September
4-7 p.m.**

Historic Downtown Triangle

Music by: Sept. 17, John Burns, songwriter
www.facebook.com/waukeefarmersmarket

YOGA IN THE PARK

**Second and fourth Saturdays,
9:30 a.m., June through September**
Windfield Park Open Air Shelter,
114 Windfield Parkway

Join local, certified yoga instructors for Yoga in the Park. Bring a yoga mat or towel, water bottle and \$5 per person. For ages 12 and older.



Firefighters' Pancake Breakfast

OCTOBER 2025

WAUKEE WAUKTOBERFEST

Saturday, Oct. 4

Enjoy a day full of fun with live music, German food, beer, and the stein holding contest. Don't forget to wear your traditional attire and dance the night away to some lively polka music. www.facebook.com/WAHSWauktoberfest

TRICK-OR-TREATING

Oct. 31

6-8 p.m.

Starting this year, the Waukeee City Council has designated Halloween evening for trick-or-treating.

DECEMBER 2025

WINTERFEST

Friday, Dec. 5

Downtown Triangle

Bring on the holiday cheer with your friends, family and neighbors at Waukeee's free, annual WinterFest celebration held at the Downtown Triangle. Enjoy warm holiday treats, games and activities, a visit with Santa, tree lighting and much more. www.waukeee.org/476/WinterFest



Easter Egg Hunt

JANUARY 2026

FAMILYFEST

Saturday TBA

Check out Waukeee area businesses, enjoy games and prizes, and jump on inflatables at this free event held every January. Waukeee.org/FamilyFest

APRIL 2026

EASTER EGG HUNT

Saturday, April 4

The hunt starts at 10 a.m. at Centennial Park, rain or shine. Enjoy thousands of eggs and pieces of candy at this popular event. Watch for the special golden prize eggs. Waukeee.org/EasterEggHunt

MAY 2026

PANCAKE BREAKFAST AND FOOD DRIVE

Saturday TBA in May • 7-11 a.m.

Waukeee Public Safety Building,
1300 S.E. L.A. Grant Parkway

The Waukeee Firefighters' Association hosts its annual Pancake Breakfast Event each spring at the Waukeee Public Safety Building. This family-friendly event draws hundreds of residents who enjoy "all you care to eat" pancakes and sausage. Plus, kids can burn off all that syrup-induced energy with inflatables and fire truck rides. Guests are encouraged to bring non-perishable food items or cash donations for the WayPoint Resources Food Pantry.

EVENTS

JUNE 2026

FARMERS MARKET

Wednesdays, June through September
4-7 p.m.

Historic Downtown Triangle

www.facebook.com/waukeefarmersmarket

YOGA IN THE PARK

Second and fourth Saturdays,
9:30 a.m., June through September

Windfield Park Open Air Shelter,
114 Windfield Parkway

Join local, certified yoga instructors for Yoga in the Park. Bring a yoga mat or towel, water bottle and \$5 per person. For ages 12 and older.

WAUKEE PALOOZA

TBA

The Rotary Club of Waukee's music festival is a fundraiser to support local nonprofit organizations. It's also a community celebration with music, food, drinks and a good time for a good cause.

BACCOON RIDE

Saturday TBA

Enjoy a 71-mile ride on the scenic Raccoon River Valley Trail featuring bacon specialty foods along the way at the annual BACoon RIDE starting and ending in Waukee. www.facebook.com/baconrideiowa.

MOVIES IN THE PARK

TBA

Centennial Park Open Air Shelter,
1255 Warrior Lane

Enjoy Hollywood's biggest hits under the stars with Movies in the Park. Movies in the Park are free and provide an

abundance of entertainment. Showtime is at dusk (approximately 8:45 p.m.) in Centennial Park. Bring lawn chairs, blankets and refreshments.

JULY 2026

FARMERS MARKET

Wednesdays, June through September
4-7 p.m.

Historic Downtown Triangle

www.facebook.com/waukeefarmersmarket

WAUKEE INDEPENDENCE DAY CELEBRATION

Friday, July 3, and Saturday, July 4
Centennial Park, 1255 Warrior Lane,
Waukee

Enjoy this celebration with games, food vendors, Waukee Freedom 5K, Rotary Pancake Breakfast, parade, inflatables, live music and, of course, a fireworks show. www.waukee.org/777/Independence-Day-Celebration

WAUKEE ARTS FESTIVAL

Friday and Saturday TBA

The Waukee Arts Festival continues to grow. It features artist vendors, food trucks, beer garden, kids activities and concerts. waukeeartsfestival.org

DALLAS COUNTY FAIR

TBA

From livestock shows, a rodeo, contests and carnival to mutton bustin', watermelon feed and pedal tractor pull, and much, much more — you will find all the county fair staples and favorites at the Dallas County Fair, held at the fairgrounds in Adel. www.dallascountyfair.com/fair-schedule ■

Men's

DAY OUT IN WAUKEE!

Waukee offers entertainment without leaving the neighborhood. These local businesses make your day exciting with friends and family.



LEVEL UP YOUR PROJECT!

WAUKEE POWER EQUIPMENT

112 W Hickman Road, Waukee | (515) 987-2222

The right tool for any season!

If you need help in making your selection, call or stop in – we're always ready to help!

GET A BREATH OF FRESH AIR

HEART OF WARRIOR TRAIL

Starts northeast of Waukee's Centennial Park for 3 miles

The Heart of the Warrior Trail helps to unify the Waukee community by providing a continuous trail through the core of established neighborhoods in the city.



RETRO AND PC GAMING

BUDU\BU THRIFT STORE ART COLLECTIVE

5957 Ashworth Rd, West Des Moines | 42 NE Carefree Ln, Waukee

Budu\Bu is a vibrant thrift store offering essentials and more, including tech, gaming and PC building hardware. Discover unique items for your home or workspace and enjoy artworks by local artists.

Stop in today!





GET A BREATH OF FRESH AIR

TRAILSIDE DOG PARK

590 SE Brick Drive, Waukee

The four-acre site, includes public restrooms, 21 parking stalls, separated large/small dog areas, a drinking fountain, dog waste stations, a shade structure, concrete walking paths and open greenspaces.



BEFORE YOU HIT THE ROAD

AUTO ADDICTIONS

545 Highway 6, Waukee | 515-987-8468

We are your **#1 SOURCE** for ...
Wheels, Tires, Window Tinting,
Vinyl Wrap & Accessories!

We are dedicated to giving you the very best experience!

END THE DAY WITH A GOOD MOVIE!

THE PALMS THEATRES & IMAX

200 NE Westgate Dr, Waukee | (515) 444-5006

One of the largest IMAX screens in the Midwest, outfitted with dual Laser Projection System and 12 channel immersive sound. UltraLux Loungers with optional heating settings in every auditorium



PLACES OF WORSHIP

ABUNDANT LIFE CHURCH OF WAUKEE

502 Sixth St., Waukee

www.abundantlifewaukee.org

THE CHURCH OF JESUS CHRIST OF LATTER-DAY SAINTS

400 Pleasant View Drive, Waukee

local.churchofjesuschrist.org/en/us/ia/waukee/400-pleasant-view-drive

FOX CREEK COMMUNITY

33365 335th St., Waukee

515-987-6090

www.facebook.com/FoxCreekCommunity

HILLTOP CHURCH

200 N.E. Westgate Drive

(The Palms Theatre & IMAX)

515-556-2353

www.thisishilltop.church

IMMANUEL LUTHERAN CHURCH

900 S. Warrior Lane, Waukee

515-987-4089

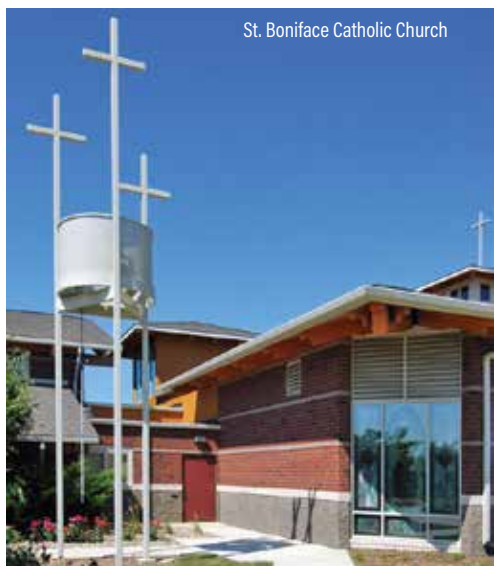
www.ilcwaukee.org/home

LUTHERAN CHURCH OF HOPE WAUKEE

305 N.E. Dartmoor Drive, Waukee

515-264-2000

www.lutheranchurchofhope.org/waukee



St. Boniface Catholic Church

ST. BONIFACE CATHOLIC CHURCH

1200 S. Warrior Lane, Waukee

515-987-4597

stbonifacechurch.org

REVEAL COMMUNITY CHURCH

205 N.E. Dartmoor Drive, Waukee

515-987-9400

revealcc.com

WAUKEE BAPTIST CHURCH

45 Fourth St., Waukee

office@waukeebaptistchurch.com

waukeebaptistchurch.com

WE'VE GOT YOUR FAVORITE DRINK!

Tea Bombs, Protein Coffees, Protein Smoothies

KEE
NUTRITION



Follow us for
announcements!

454 SE University Ave, Waukee
Mon-Fri: 6am-2pm Sat: 8am-12pm



PLACES OF WORSHIP

WAUKEE CHRISTIAN CHURCH (DISCIPLES OF CHRIST)

2060 W Hickman Road, Waukee
515-987-4937
www.waukeechristianchurch.com

WAUKEE COMMUNITY CHURCH

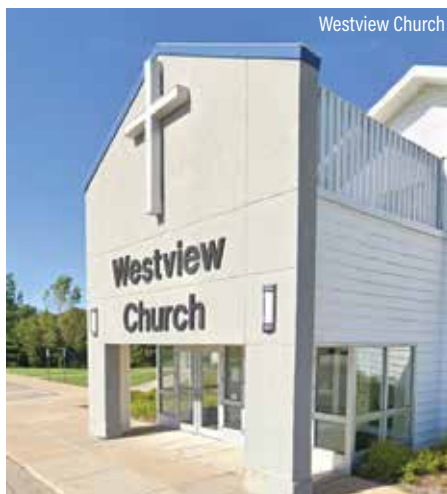
215 N. Warrior Lane, Waukee
515-978-7732
www.waukeecommunitychurch.com

WAUKEE UNITED METHODIST CHURCH

2075 S.E. LA Grant Parkway, Waukee
515-987-4531
www.waukeechurch.org

WESTVIEW CHURCH

1155 S.E. Boone Drive, Waukee
515-987-3220
info@westview.org
www.westview.org



Westview Church

WESTWIND CHURCH

1115 S.E. Westbrook Drive, Waukee
515-987-2040
office@westwindchurch.org
www.westwindchurch.org ■

**Lower closing costs.
Local servicing.**
The experience you deserve.

WHY LUANA SAVINGS BANK?

-  Lender-Paid Closing Cost Option*
Purchases & Refinance
-  Loans Serviced Locally
-  Quick Loan Approval
-  Competitive Rates

*Not all loans apply. Subject to approval. Contact us to receive a rate quote customized for you.



**Scott
Bishop**

NMLS #1021523



**Brian
Byrnes**

NMLS #41854



**Mic
Hayes**

NMLS #41860



**Angie
Sprenger**

NMLS #1893794

**LUANA
SAVINGS BANK**



📍 LuanaSavingsBank.com

📞 515.987.2116

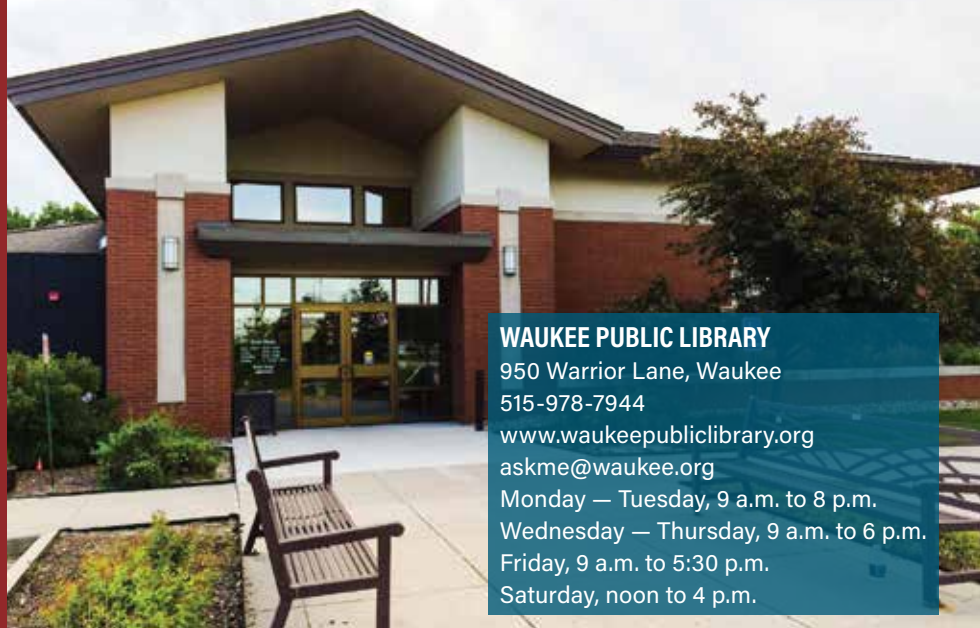
📍 16390 Holcomb Ct.
Clive, IA 50325

Across from Stivers Ford



PURCHASE/REFINANCE • NEW CONSTRUCTION • LOT PURCHASE • HOME EQUITY LOAN

WAUKEE PUBLIC LIBRARY



WAUKEE PUBLIC LIBRARY

950 Warrior Lane, Waukee

515-978-7944

www.waukeepubliclibrary.org

askme@waukee.org

Monday — Tuesday, 9 a.m. to 8 p.m.

Wednesday — Thursday, 9 a.m. to 6 p.m.

Friday, 9 a.m. to 5:30 p.m.

Saturday, noon to 4 p.m.

WALK IN TO WAUKEE'S NEWEST TATTOO SHOP

CHECK OUT
OUR
WEBSITE



CUSTOM TATTOOS PIERCINGS



STOP IN AND BOOK AN APPOINTMENT TODAY

505 E. HICKMAN RD

CALL US 515-257-7940



WWW.LUCKYGALTATTOO.COM | 2025

WAUKEE PUBLIC LIBRARY

The Waukee Public Library is a vibrant place for community members to learn, work, play and explore. The library provides a broad range of materials, events, programs and services for the entire Waukee community and surrounding area.

LIBRARY RESOURCES

In addition to the more than 30,000 books, audiobooks and DVDs on hand, the library has a wide variety of online resources you can access from the library, your computer or mobile device. With just your library card number, you have access to many beneficial resources:

- Explore 30,000 e-books and downloadable audiobooks
- Learn a new language
- Research your family tree
- Enhance your business and technical skills
- Receive book recommendations
- Research academic journals, books and encyclopedias
- Test prep, job search and create a resumé

OTHER SERVICES:

- Printing, copying and fax
- Free Wi-Fi and public computers
- Meeting and study rooms

MUSEUMS AND ART

- Art Gallery
- Coal Mine Museum
- Hal Manders Baseball Museum
- American Gothic Sculpture

PROGRAMS AND EVENTS

- Story times for children
- 1,000 Books Before Kindergarten program
- STEM programs
- Teen programs
- Summer and winter reading programs
- Book clubs
- Speakers and presenters
- Downloadable magazines
- STEAM kits available for checkout
- WiFi hotspots for checkout
- Learning centers
- Art gallery
- Sensory spaces
- Adventure Passes ■



ALOHA, WAUKEE!

SWEET & SAVORY
Plate Lunches
– with chicken, pork or veggies options!

Island Inspired Sides
– with favorites like SPAM Musubi, Macaroni Salad **and more!**

And Dole Soft Serve®
– the tropical soft serve, for Dessert!

HAWAIIAN BROS
— ISLAND GRILL —

ORDER ONLINE!

1005 SE Alice's Rd - Waukee, IA | Sun-Thurs: 11AM - 10PM • Fri-Sat: 11AM - 11PM

WAUKEE BY THE NUMBERS

Median
age
34

56%
Residents with
a bachelor's
degree or
higher

13,060
Households



31,823
Residents

Median
household
income
\$94,371

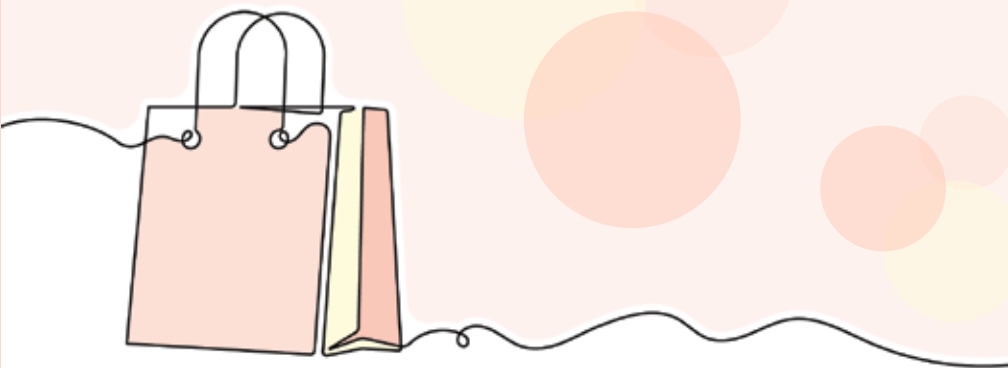
23
Miles
of trails

#1 Fastest growing
large city in Iowa

#1 First fully fiber community
in the Des Moines metro

#7 Safest city
in Iowa

Shop local AND SAVE!




tropical
SMOOTHIE
CAFE™

ORDER ONLINE!

www.tropicalsmoothiecafe.com
426 E. Hickman Rd, Waukee | 515-452-8089

Locally Owned!



\$8.00

FLATBREAD COMBO
Any flatbread, 24 oz. smoothie and a side. Excludes breakfast.

Expires 9/5/26. Valid only in-club at 426 E. Hickman Road, Waukee, WI location. Not valid with any other reward, offer or discount. Third-party services, online orders or the Tropical Smoothie Cafe app. Discount applies to the lowest priced flatbread combo ordered. Must surrender original coupon at time of purchase. Copies not accepted. Exclusions apply. Modifications, fresh add-ins, supplements and tax extra. Limit one \$8.00 flatbread combo per coupon. Limit one coupon per guest, per visit.



MICKEY'S
IRISH PUB

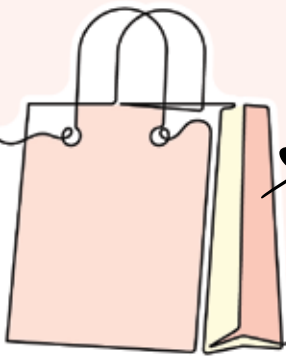
50 SE Laurel, Waukee | 515.987.9604



\$5 OFF

A \$25 PURCHASE

Waukee location only.
Not valid with any other offer. Expires 6/30/26



Shop local

SAFESPLASH
SWIM SCHOOL
SwimLabs
 Swim School **COMPETITIVE TRIATHLETE**

1175 SE University Ave, Waukee
 515-200-3477
safesplash.com | swimlabs.com

FREE TRIAL CLASS
WHEN YOU SIGN UP!
USE CODE "WAUKEE SOURCE"

Small Class Sizes • Competitive Stroke Analysis
 Classes for Every Age & Skill Level • Warm Water

KEE
 NUTRITION

**Tea Bombs, Protein Coffees,
 Protein Smoothies**

454 SE University Ave, Waukee
 Mon-Fri: 6am-2pm Sat: 8am-12pm
 Follow us on Facebook for announcements!

**BUY ONE
 GET ONE
 50%
 OFF**
SELECT DRINKS!

HAWAIIAN BROS
 — ISLAND GRILL —

1005 SE Alice's Rd • Waukee, IA

**FILL OUT A
 GOOGLE REVIEW**
AND RECEIVE A

**Free
 Dessert!**

HAWAIIAN BROS
 — ISLAND GRILL —

AND SAVE!



Waukee Hardware
Do it Best & Rent-it Center

515-987-4574

380 S. 6th Street, Waukee

waukee.doitbest.com

FREE ship to store!

\$5.00 OFF

ANY PURCHASE OF \$25 OR MORE. Regular priced items only. One coupon per household.

Waukee Hardware
Do it Best & Rent-it Center

Expires July 31, 2026
515-987-4574
380 S. 6th Street, Waukee

1 single cut
HOUSE KEY

BRING IN THIS AD FOR DISCOUNT.
One coupon per household.

FREE!

Waukee Hardware
Do it Best & Rent-it Center

Expires July 31, 2026
515-987-4574
380 S. 6th Street, Waukee

Los Tres
Amigos



515.987.0393

Mon -Thurs 11-10pm | Fri-Sat 11-10:30pm | Sun 11-9pm

63 NE Carefree Lane in Waukee • tresamigos123.com

\$5 OFF

A PURCHASE OF
\$25 OF MORE!

One use per table. Not valid with other offers.
Offer expires 6/30/26

WARRIOR
LANES

190 SE LAUREL STREET
515-987-4840 • Waukee
www.warriorlanes.com

FREE!

1 GAME OF BOWLING
UP TO \$6.25 VALUE

NOT VALID WITH ANY OTHER OFFER. 1 COUPON
PER PERSON PER VISIT. EXPIRES 06/30/2026.



Prairieview School

ADMINISTRATION OFFICE

560 S.E. University Ave., Waukee

Dr. Brad Buck, superintendent

Phone: 515-987-5161

VINCE MEYER LEARNING CENTER

430 Ashworth Drive, Waukee

Lindsay Mount, preschool director

Phone: 515-987-5160

BROOKVIEW ELEMENTARY SCHOOL

8000 E. P. True Parkway, West Des Moines

Stephanie Angelino, principal

Phone: 515-987-5166

Attendance: 515-987-2744

EASON ELEMENTARY SCHOOL

605 S.E. Boone Drive, Waukee

Clint Prohaska, principal

Phone: 515-987-5200

Attendance: 515-987-2765

GRANT RAGAN ELEMENTARY SCHOOL

645 N.E. Dartmoor Drive, Waukee

Matt Robie, principal

Phone: 515-987-0435

Attendance: 515-987-2737

MAPLE GROVE ELEMENTARY SCHOOL

1455 98th St., West Des Moines

Graham Jones, principal

Phone: 515-987-3363

Attendance: 515-987-2748

RADIANT ELEMENTARY SCHOOL

5050 170th St., Urbandale

Kimberly Tierney, principal

Phone: 515-987-2210

Attendance: 515-987-2746

SHULER ELEMENTARY SCHOOL

16400 Douglas Parkway, Clive

Ryan Marzen, principal

Phone: 515-987-8597

Attendance: 515-987-2763

SUGAR CREEK ELEMENTARY

965 Ashworth Road, Waukee

Elizabeth Griesel, principal

Phone: 515-987-2786

Attendance: 515-954-4530

WALNUT HILLS ELEMENTARY SCHOOL

4240 N.W. 156th St., Urbandale

Douglas Barry, principal

Phone: 515-987-3585

Attendance: 515-987-2742



WATERFORD ELEMENTARY

5635 156th St., Urbandale

Joel Fey, principal

Phone: 515-987-2730

Attendance: 515-987-2731

WAUKEE ELEMENTARY SCHOOL

850 Sixth St., Waukee

Nicole Johnson, principal

Phone: 515-987-5193

Attendance: 515-987-2762

WOODLAND HILLS ELEMENTARY SCHOOL

1120 S. 95th St., West Des Moines

Scott Shumaker, principal

Phone: 515-987-5196

Attendance: 515-987-2702

SOUTH MIDDLE SCHOOL

2350 S.E. L.A. Grant Parkway, Waukee

Joseph Spiess, principal

Phone: 515-987-3222

Attendance: 515-987-2785

TRAILRIDGE SCHOOL

1455 Douglas Parkway, Waukee

Adam Shockey, principal

Phone: 515-987-2720

Attendance: 515-984-4720

WAUKEE MIDDLE SCHOOL

905 S. Warrior Lane, Waukee

Susan Anderson, principal

Phone: 515-987-5177

Attendance: 515-987-2787

PRAIRIEVIEW SCHOOL

655 S.E. University Ave., Waukee

Mark Stallman, principal

Phone: 515-987-2770

Attendance: 515-987-2757

TIMBERLINE SCHOOL

2605 S.E. L.A. Grant Parkway, Waukee

Frank Lee, principal

Phone: 515-987-9444

Attendance: 515-987-2764

WAUKEE HIGH SCHOOL

555 S.E. University Ave., Waukee

Judi Luther-Roland, principal

Phone: 515-987-5163

Attendance: 515-987-2781

NORTHWEST HIGH SCHOOL

655 N.W. 10th St., Waukee

Nicholas Ross, principal

Phone: 515-987-5181

Attendance: 515-987-2727

WAUKEE INNOVATION AND LEARNING CENTER

295 S.E. Ashworth Road, Waukee

Michelle Hill, director of work based learning

Phone: 515-987-9888

WAUKEE COMMUNITY SCHOOL DISTRICT

SCHOOL BOARD

The Waukee Community School District School Board is dedicated to inspiring learners who feel valued, challenged and prepared to embrace tomorrow's opportunities. School board meetings are held on the second and fourth Monday of the month at the District Office, 560 S.E. University Ave., at 6 p.m.

Remaining 2025 regular meetings

July 28
Aug. 11 and 25
Sept. 8 and 22
Oct. 13 and 27
Nov. 10 and 24
Dec. 8

BOARD MEMBERS

PRESIDENT

Michael Schrodt

mschrodt@waukeeschools.org

Term: 2021-2025

Wendy Marsh

wmarsh@waukeeschools.org

Term: 2023-2027

Jaime Secory

jsecory@waukeeschools.org

Term: 2021-2025

VICE PRESIDENT

**Armel R Traore Dit
Nignan**

atraoreditnignan@

waukeeschools.org

Term: 2021-2025

Kate Boonstra

kboonstra@waukeeschools.org

Term: 2023-2027

Michael Trettin

mtrettin@waukeeschools.org

Term: 2023-2027

Lori Lyon

llyon@waukeeschools.org

Term: 2021-2025



AWARD-WINNING CHIROPRACTIC CARE
For the Whole Family

**SPORTS CHIROPRACTIC
WEBSTER CERTIFIED
PREGNANCY
STRESS RELATED
HEALTH ISSUES**



Your Family's Chiropractor
MOST INSURANCES ACCEPTED

www.waukeewellness.com
710 SE Alices Road • Waukee • 515-978-6661



**From Bubbles
to Butterfly.**

**we have classes for
every age & skill level!**

FREE TRIAL CLASS WHEN YOU SIGN UP!
use code "Waukee Source"

SAFESPLASH (**SwimLabs**)
SWIM SCHOOL (Swim School COMPETITIVE LIFEGUARD)

*Small Class Sizes • Competitive Stroke Analysis
Classes for Every Age & Skill Level • Warm Water*

1175 SE University Ave., Waukee
515-200-3477 • safesplash.com • swimlabs.com

WAUKEE COMMUNITY SCHOOL DISTRICT

WAUKEE COMMUNITY SCHOOLS FOUNDATION

506 S.E. University Ave.

www.waukeeschoolsfoundation.org

Executive Director: Carina Woodward

Director of Events and Administration:

Elizabeth Olson



The Waukee Community Schools Foundation supports the schools by fulfilling its mission: Empower every Waukee student to achieve their aspirations by enhancing their educational experience.

Grants are available to all WCSD employees, students and registered parent organizations. The Foundation also funds Professional Development grants, which are distributed by district administration, and scholarships for seniors. The Waukee Schools Foundation Award for Teaching Excellence Innovation is also presented. It was created to recognize the work of one person within the Waukee district who elevates the standard and works to integrate and elevate education. This person goes above and beyond in the classroom and truly makes an impact on students.

Don't be the only one
MISSING THE TARGET.



ADVERTISE WITH MARTHA!

Our readers are your potential new customers!

CONTACT ME TODAY!

MARTHA MUNRO
martha@iowalivingmagazines.com
515-953-4822 ext. 314



**LIQUOR • BEER
WINE • VAPES**



GREAT SELECTION!

**OPEN 7 DAYS A WEEK
9AM TO MIDNIGHT**



UNIVERSITY LIQUORS
WINES • BEER • SPIRITS • TOBACCO

**9250 University Avenue,
Suite 115, West Des Moines**
Call us at 515-410-1025 or find us on Facebook!

ASSISTANCE PROGRAMS

WAYPOINT RESOURCES PROGRAMS (formerly Waukee Christian Services)

waypoint.care

FREE HEALTH CLINIC

1155 S.E. Boone Drive, Waukee

waypoint.care/health-clinic

515-987-5523 ext. 103

Monday: Walk-Ins only, 5:30-7 p.m.

Chiropractic and Physical Therapy on select dates

The Free Health Clinic is a nonprofit outreach that serves the health needs of the uninsured and under-insured members of the community. Its mission is to provide health care for physical, emotional and spiritual health. All people are welcome to receive services no matter where they call home. Assistance is

private and will remain confidential. The Free Health Clinic is a member of Free Clinics of Iowa.

Available Services

- Illness and minor injury care
- Well-child exams
- Sports and school physicals
- Employment physicals
- Chronic disease management
- Diabetes – glucose testing
- Patient assistance program enrollment
- Physical therapy
- Chiropractic care

FOOD PANTRY

Westview Church, 1155 S.E. Boone Drive

waypoint.care/food-pantry

515-987-5523

A place to access food, clothing, and hope.



FOOD PANTRY

ANYTIME FOOD ROOM

CLOTHING CLOSET

FREE HEALTH CLINIC

CLIENT SUPPORT

SEASONAL PROGRAMS

Find us at
WayPoint.care


WayPoint
RESOURCES

1155 SE Boone Drive
Waukee IA 50263

515-987-5523

WE'LL GET YOU COVERED.

Providing customized insurance planning since 1978

Vibrant Insurance Group is a different kind of agency. We have extensive experience and expertise—and a positive energy our clients enjoy. We can provide all your residential and commercial insurance coverage needs.

Give us a call, we've been waiting to meet you!

VIBRANT
INSURANCE GROUP

515-223-6757
9750 University Ave, Ste 300
West Des Moines

vibrantins.com

ASSISTANCE PROGRAMS

Hours: Monday, noon to 6 p.m.
Tuesday - Thursday, 9 a.m. to 3 p.m.
Saturday, 9-11 a.m.

Closed on Friday and Sunday

Food pantry services are available to all Dallas County residents in need of assistance. First-time visitors will go through a brief check-in process. Clients must live in Dallas County or Waukee School District, bring identification for each member of the household and bring proof of residency (utility bill or rental lease agreement). Bring reusable bags for food. See the website for more information.

ANYTIME FOOD ROOM

The Anytime Food Room includes food and other items acquired through the food rescue program. It provides clients with

another opportunity for additional food outside of their monthly visit. Food items vary, but typically include bread, pastries, produce, sandwiches and other shelf-stable items. Clients can take advantage of this offering one time per day during regular Food Pantry hours. Bring your own bags for Anytime Food.

THE FRUITFUL VINE GARDEN

Located on the grounds of Westview Church in Waukee, The Fruitful Vine Garden was started in 2009 with the goal of providing fresh produce to clients of the Food Pantry. The garden is a collaborative effort of volunteers, including individuals, families, community groups, and members of the Dallas County Master Gardeners Association.

Life is better in Health.

Family centered, personalized chiropractic treatments, tailored to each patient.

- Flexion Distraction Technique
- Webster Technique • Pediatric SOT
- Instrument Assisted Adjusting
- Soft Tissue/Muscle Work
 - Electric Stimulation
 - Percussive Therapy
 - Active Release Technique



Dr. Brianna Bahnsen, DC

Book an Appointment Today!



450 SE University Ave. Waukee, IA
515.978.1870 • vitachirowellness.com

MEXICAN RESTAURANT

*Visit Us & Enjoy
Real Mexican Food!*



Los Tres Amigos



515.987.0393

Mon - Thurs 11-10pm | Fri-Sat 11-10:30pm | Sun 11-9pm

**63 NE Carefree Lane, Waukee
tresamigos123.com**

Elevate Your Banking Experience With VisionBank Private Wealth Banking.

At VisionBank, we understand that your financial needs and aspirations require a higher level of care and expertise. That's why we're proud to introduce VisionBank Private Wealth Banking—an exclusive program tailored for individuals and families who value personalized solutions and exceptional service.

WHY VISIONBANK PRIVATE WEALTH?

With our 140 years of experience and a commitment to fostering strong relationships, VisionBank Private Wealth Banking combines our legacy of trust with modern innovation. Our program isn't just about managing your wealth—it's about building a partnership that empowers you to thrive.



GET STARTED TODAY

Discover the difference a personalized approach can make. Contact Will to learn more about how we can elevate your financial future.

VisionBank Private Wealth Banking—where expertise meets exclusivity and service exceeds expectations.



WILL BROWN

VP | Private Wealth Banking

will.brown@visionbank.com

(515) 697-4793 | NMLS#: 448600

See what we can do for you.



VisionBank

Member
FDIC



Equal Housing
Lender

visionbankwealth.com | (800) 574-8123

ASSISTANCE PROGRAMS

During the growing season, clients are eligible to visit the garden once a week to receive a “share” of fresh produce based on family size and availability. Before going to the Community Garden, clients must first check in at the Food Pantry.

THE CLOTHING CLOSET

Westview Church, 1155 S.E. Boone Drive

waypoint.care/clothing-closet
515-987-5523

Families with children ages 4-18 can shop in a boutique-like setting once a month to pick out both new and like-new clothing items free of cost. Contact information, hours, guidelines and requirements are same as for the Food Pantry.

SEASONAL PROGRAMS

waypoint.care/seasonal-programs
WACS also offers seasonal programs such as Easter baskets, school supplies, Thanksgiving meals and Christmas food boxes and gifts. Apply online.

OTHER COMMUNITY RESOURCES

For information on other assistance programs in the community and county, visit <https://waypoint.care/additional-resources/>. Information on these programs can be found there:

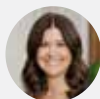
- Iowa 2-1-1
- Dallas County General Relief
- Dallas County Resource Directory
- Crisis Intervention and Advocacy Center
- Polk County General Assistance
- InnerVisions Healthcare
- Health Navigation – Dallas County
- Hawki ■



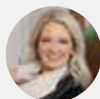
DISCOVER YOUR BEST SMILE

At Waukee Dental, we believe that everyone can achieve their dream smile. No matter the state of your smile right now, our experienced providers can help you restore it and prevent future dental issues.

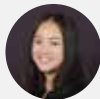
515-777-7568
402 E. Hickman Road
Waukee, IA 50263



KAISHA HEEMSKERK
DDS



ALLISON PALECEK
DMD



JEAM KIM
DDS



KELLEN BOHN
DDS

- ✓ Preventative Care
- ✓ Restorative Dentistry
- ✓ Pediatric Dentistry
- ✓ Cosmetic Dentistry
- ✓ Implant Dentistry
- ✓ Botox/TMJ
- ✓ Emergency Services



GET IN TOUCH

Give us a call to schedule your appointment today!

ATTENTION

WAUKEE BUSINESSES!

Exciting things are happening this year in the Waukee Living Magazine that we don't want you to miss out on.



IN SEPTEMBER, IT'S

RESIDENTS' CHOICE AWARDS IN DALLAS COUNTY!

Voting starts in September for residents to vote for their favorite businesses in more than 70 categories. Advertise with us to promote your business!

POLL OPENS SEPTEMBER 2025!

www.iowalivingmagazines.com/residents-choice-awards



WAUKEE LIVING MAGAZINE'S HOW TO GUIDE

Is your company the expert in your field?

Make your business is top of mind whenever Waukee Living Magazine readers have a how-to question about your industry.

LOOK OUT FOR THE HOW TO GUIDE
COMING OCTOBER 2025.



Advertise with
Waukee Living Magazine!



CONTACT MARTHA!

martha@iowalivingmagazines.com

NUMBERS TO KNOW

Waukee Public Safety Building, 815 N.W. 20th St.

Police and fire departments **Emergency: 911**
 Non-Emergency: 515-222-3321

Waukee City Hall, 230 W. Hickman Road

General information.....515-978-7900

Community Development (building permits and zoning).....515-978-9533

Utility billing (gas and water set-up).....515-978-5502

Emergency (gas smell, no water, etc.).....515-249-1212

Garbage and Recycling (ASI).....515-964-5229

Pet Licensing (PetData).....855-585-8157

Waukee Parks & Recreation, 805 University Ave.....515-978-0007

Police office515-978-7979

Fire office.....515-978-7998

Waukee Public Works Building, 805 University Ave.

Gas and water meters and streets.....515-978-7920

Waukee Public Library, WaukeePublicLibrary.org, 950 Warrior Lane.....515-978-7944

Sugar Creek Golf Course, Waukee.org/SugarCreekGolfCourse,
 1505 Sixth St.515-987-5247

Waukee Chamber of Commerce, www.waukeechamber.com.....515-978-7115

Waukee Community School District, www.waukeeschools.org.....515-987-5161

Waukee Post Office, www.usps.com515-987-5409

Dallas County, www.co.dallas.ia.us

Auditor.....515-993-4750

Driver's licenses515-993-6992

Motor vehicle registration.....515-993-5812

Recorder.....515-993-5804

Sheriff515-993-4771

Treasurer (property tax information).....515-993-5808

Voter registration.....515-993-4751

Iowa One Call, www.iowaonecall.com check before you dig.....811

MidAmerican Energy, www.MidAmericanEnergy.com.....888-427-5632

PLAY THE DAY AWAY!



- Indoor dog park/Event center • Boarding
- Newly expanded daycare • Pet supplies
- DIY bathing • Professional bathing + nail trims

Run around and meet new friends!

Stylin Paws Play Place:
 3901 121 St. • Urbandale
 515-720-7909

Stylin Paws:
 2180 NW 156th St. #105 • Clive
 515-518-5913

STYLINPAWSSALON.COM

**New Waukee Location
 Coming Soon in 2025!**

120 Dartmoor Drive, Waukee





ALL **FOUR** SEASONS.
ONE TRUSTED NAME.

DORRIAN
HEATING & COOLING

GIVE US A CALL TODAY. WE'RE GLAD TO HELP!

515-808-7402

| www.dorrianheating.com

REPEATEDLY RECOGNIZED FOR A SUPERIOR SALES
AND SERVICE EXPERIENCE



OVER 900 NEW, USED, AND COMMERCIAL VEHICLES



USED CAR SUPERSTORE



LINCOLN
CERTIFIED PRE-OWNED



**SERVICE & PARTS "OPEN Late"
& ON SATURDAYS.**

HOURS: 7AM-7PM (MONDAY-FRIDAY)

QUICKLANE OPEN SATURDAY 7:30AM-12 NOON



TIRE & AUTO CENTER



**Stivers Ford PRO Elite
Commercial Service Center**

Over 36,000 sq ft and 24 service bays
dedicated to your business needs



ALL MAKES COLLISION CENTER

FREE ESTIMATES

WE GUARANTEE OUR WORK
FOR AS LONG AS YOU OWN YOUR CAR.

IOWA'S #1 FORD LINCOLN DEALER
STIVERSFORDIA.COM 515 987 3697



Scott Politte, President
Stivers Ford Lincoln
of Iowa



ON THE WAUKEE SIDE
OF WEST DES MOINES