

2026 CLIVE CHAMBER OF COMMERCE DIRECTORY & COMMUNITY GUIDE



Live. Work. Play.



PRSR STD
ECRWSS EDM
U.S. POSTAGE
PAID
BIG GREEN
UMBRELLA MEDIA

POSTAL CUSTOMER
BIG GREEN
UMBRELLA MEDIA
8101 Birchwood Ct. Ste. D
Johnston, Iowa 50131



Clive Chamber
of Commerce

WWW.CLIVECHAMBER.ORG



*Serving Central Iowa
For More Than 35 Years!*



**FAMILY OWNED & OPERATED
SERVING GENERATIONS!**

AUTO PAINTING • COLLISION REPAIR • AUTO GLASS & MORE!

SHOP LOCAL • TRUST THE BEST!

515 223-6037

WE WORK WITH ALL MAJOR INSURANCE COMPANIES

WHERE QUALITY AND CARE COME FIRST!

TABLE OF CONTENTS

- 4** Chamber Board of Directors
- 5** Membership Benefits
- 6** Clive's momentum continues
- 10** Community Events
- 12** What Chamber Members are Saying
- 14** Why Businesses Choose Clive
- 16** Mayor & City Council
- 17** City Amenities
- 19** New to Clive?
- 20** Map
- 22** Civic Organizations
- 24** Schools
- 26** Chamber Directory



**PUBLISHED FOR THE
CLIVE CHAMBER OF COMMERCE BY:**



Big Green Umbrella Media
515-953-4822
8101 Birchwood Court, Suite D
Johnston, Iowa 50131
www.biggreenumbrellamedia.com

Publisher & President..... Shane Goodman
Vice President..... Jolene Goodman
Advertising Sales..... Kristine McDonald
Design Manager..... Celeste Tilton
Graphic Designer..... Jayde Vogeler
Graphic Designer..... Nick Ruiz
Digital..... Beckham Miller
Business Office..... Brent Antisdell
Distribution Manager..... Jim Jacobsen

Information supplied by the Clive Chamber of Commerce and the City of Clive. A copy of this publication is mailed to every address in the 50325 ZIP code. Please report any errors or omissions to 515-222-5295. Contents© 2026 Big Green Umbrella Media, Inc. All rights reserved. Nothing may be reprinted in whole or in part without permission of the publisher.

Your locally owned & operated flooring experts

Ankeny | Clive | Mason City

iowaflooringamerica
 flooringamericaiaowa

Flooring America

FlooringAmerica.
where friends send friends®
with pets
PET PERFECT

2026 BOARD OF DIRECTORS

Executive Board



Ahmed Ibrahim
President
NCMIC Group, Inc.



Angie Sprenger
Vice President
Luana Savings Bank



Tyler Kamerman
Secretary
Many Hands



Matt Janssen
Treasurer
Farmers State
Bank



Nikki Nigg
Past President
MercyOne Clive
Rehabilitation
Hospital

Board of Directors



Sarah Schultz
Board & Brush
Creative Studio



Sue Bennett
Complete
Weddings + Events



Trey Rice
ServiceMaster
by Rice



Shane Larson
Schemmer
Associates, Inc.



Renee' Nash
Wildwood Lodge

Liaisons & Staff



Pete De Kock
City of Clive



Cameron Wendt
West Des Moines
Community Schools



Ryan Marzen
Waukee Community
Schools



Kristy Schmidt
Executive Director
Clive Chamber of
Commerce



Edye Beckerman
*Membership
Coordinator*
Clive Chamber of
Commerce



WWW.CLIVECHAMBER.ORG

OUR MISSION

To champion a prosperous business community by serving as a collaborative force for members and partners.

15 MEMBERSHIP BENEFITS

A MESSAGE FROM THE PRESIDENT



1
Member
to Member
Networking

2
Free
Ribbon
Cutting and
Promotion

3
Recognition
of
Achievement

4
Free
Directory
Listing

5
Informational
Events

6
Referrals to
Potential
Customers

7
Free Job
Postings

8
Leadership
Opportunities

9
City and
State
Advocacy

10
Greater
Des Moines
Partnership
Membership

11
Sponsorship
Opportunities

12
Access
to Clive
Elected
Officials

13
Connection
to
Community
Events

14
Volunteer
Opportunities

15
Free
Website
Presence

I've had the privilege of working in the city of Clive for nearly 20 years at NCMIC, and I'm truly honored to serve as the 2026 president of the Clive Chamber of Commerce Board. My five years on the board have given me a deeper appreciation for the extraordinary businesses and people who make up our chamber community. The strength of the Clive Chamber comes from the engagement of our members and the strong partnerships we've built, including our ongoing collaboration with the City of Clive. We're grateful to have close relationship with city staff and elected officials and very much appreciate the support they provide and are very excited about what we can accomplish together.

As we step into 2026, we remain focused on advancing our five-year strategic plan launched in 2023, which is already producing meaningful progress. Our Clive Emerging Leaders program kicked off its second year with an energetic class of young professionals who are learning from community leaders and career development experts. We're excited to continue growing this program, with applications for the next cohort opening in July 2026 and sessions beginning in September.

Another key priority is expanding our membership to 300 by 2028. Over the past three years, we've seen tremendous growth, and we're getting closer to that milestone every day. To keep this momentum going, we've established a dedicated membership committee and strengthened our outreach efforts through social media and email campaigns.

Our events continue to show the value of the chamber experience. From sold-out favorites like Ladies Night Bingo that helps fund scholarships to our joint golf outing with the Urbandale and West Des Moines Chambers, member engagement has never been stronger. Networking events hit record attendance in 2025, and we celebrated numerous ribbon cuttings as businesses continued to grow and invest in Clive.

Looking ahead, 2026 is shaping up to be an exciting year. We're looking forward to our Annual Celebration, Food Truck Fridays in the new Clive Greenbelt Landing, the West Metro Golf Outing, and much more. Member favorites including Ladies Night Bingo, monthly networking events, luncheons, and ribbon-cutting ceremonies will all return.

It's a wonderful time to be part of the Clive Chamber of Commerce, and I look forward to connecting with you at an upcoming event!

Ahmed Ibrahim

2026 President of the Board
Clive Chamber of Commerce



CLIVE'S MOMENTUM

continues

By Lindsey Giardino



Greenbelt Groundbreaking

NEW DISTILLERY AND GREENBELT LANDING PROJECT HIGHLIGHT PROGRESS.

No doubt about it. New businesses are flocking to Clive. It is also a community that supports long-term business success.

That momentum is highlighted by the anniversaries of NCMIC (80 years) and ServiceMaster by Rice (70 years), the new Dehner Distillery coming to Clive, and the Greenbelt Landing project.

The Dehner Distillery project will support the redevelopment

of 1480 N.W. 86th St. with a distillery featuring finishing, bottling, packaging and distribution operations, along with a tasting room and outdoor patio.

Slated for completion in spring 2026, the Greenbelt Landing project will enhance 14.89 acres on the east side of N.W. 114th Street in Clive, just outside the Aquatic Center. The project is designed to expand recreational opportunities, improve water



Playground

“ Strong infrastructure, attractive gathering spaces and thoughtful development make it easier for businesses to thrive, attract employees and serve customers. When the city invests in the community experience, it directly supports a healthy local economy. ”

- KRISTY SCHMIDT, executive director, Clive Chamber of Commerce

quality and support wildlife habitat within a park that connects to the larger Clive Greenbelt.

Kristy Schmidt, executive director of the Clive Chamber of Commerce, says these projects reflect broader priorities around quality of life, strategic growth and community connection.

“For residents, they mean a Clive that continues to feel welcoming, safe and vibrant — a place where you can raise a family, build a career, and feel proud of where you live,” she says. “Whether it is new community spaces, infrastructure improvements, or initiatives that support local businesses, these efforts all work together to make daily life easier, more enjoyable and more connected.”

For the business community, the developments signal

continued investment and long-term planning.

“Strong infrastructure, attractive gathering spaces and thoughtful development make it easier for businesses to thrive, attract employees and serve customers,” Schmidt says. “When the city invests in the community experience, it directly supports a healthy local economy.”

Most importantly, Schmidt says the projects demonstrate forward momentum.

“We’re intentionally shaping a community that balances growth with the small-town feel people love,” she says.

In addition to these developments, Schmidt points to emerging leadership within the community.

“Through programs like Clive Emerging Leaders and the incredible involvement we see from young professionals, volunteers and engaged residents, it’s clear that people don’t just live here — they want to be part of building Clive’s future,” she says. “That’s powerful.”

She also notes that growth in Clive continues to be community-driven.



Greenbelt Landing Festival Grounds

“ We’re not working in silos — we’re working together. That’s what allows us to dream bigger, move faster and make decisions that truly serve the community. If you care about Clive, there is a seat at the table for you — and the future we’re building is one we’re building together. ”

- KRISTY SCHMIDT, executive director, Clive Chamber of Commerce



Greenbelt Room Window

“We’re seeing new businesses, new partnerships and new amenities, but we’re still holding on to the relationships and approachability that make Clive special,” she says. “That balance is rare, and we’re doing it well.”

Clive’s future, Schmidt says, will continue to emphasize collaboration and opportunity.

For business leaders, she offers this message:

“Your involvement matters more than you think. When you host events, mentor young professionals, sponsor community initiatives, or simply show up to connect, you are helping shape the culture and economic strength of Clive. The Chamber is here to be that bridge — helping you plug into the right people and opportunities.”



Creekside Pavilion fireplace and patio

For residents, she adds, “You don’t have to be a business owner to make an impact. Attending events, supporting local businesses, volunteering and sharing community news all help create the kind of city people are proud to call home.”

Ultimately, Clive’s strength lies in its partnerships. Collaboration between the city, the chamber, local nonprofits, schools and businesses continues to shape its direction.

“We’re not working in silos — we’re working together,” Schmidt says. “That’s what allows us to dream bigger, move faster and make decisions that truly serve the community. If you care about Clive, there is a seat at the table for you — and the future we’re building is one we’re building together.”

HOPE, HEALING, RECOVERY

YOUR RESOURCE for Behavioral Health Services in Central Iowa

Clive Behavioral Health offers mental health programs that include assessments and professional consultations and referrals for children, adolescents and adults.

- Inpatient and outpatient mental health programs
- Outpatient substance use program for adults
- Quality treatment in a healing environment



Behavioral Health

A UHS and MercyOne Partnership

TAKE THE FIRST STEP

We are available 24/7

Call us toll-free 844-680-0504 or visit us in person to get started.

1450 NW 114th St. | Clive, IA 50325

clivebehavioral.com

Universal Health Services, Inc. (UHS) is a holding company that operates through its subsidiaries. This document has been prepared by UHS of Delaware, Inc. Any reference to "UHS" or "UHS facilities" refers to UHS subsidiaries. Further, the terms "we," "us," "our" or "the company" refer to the operations of the subsidiaries of UHS. Any reference to employees refers to employment with a subsidiary of UHS. Physicians are on the medical staff of Clive Behavioral Health, Inc. with limited exceptions, are independent practitioners who are not employees or agents of Clive Behavioral Health. The facility shall not be liable for actions or treatments provided by physicians. For language assistance, disability accommodations and the nondiscrimination notice, visit our website. 24288241-298246 8/04



FRESHEN UP YOUR FINANCES

Discover fresh, powerful ways to make your money work harder for you. Visit with our experienced team to get started.



GREAT SOUTHERN BANK

12257 University Ave, Clive • 515-453-2265

GreatSouthernBank.com/business

2026 COMMUNITY EVENTS



Food Truck Fridays

Come unwind with music, food and fun at Food Truck Fridays, presented by Clive Parks and Recreation and the Clive Chamber of Commerce. Bring the whole family — the park has three playgrounds and green spaces.

2026 dates: May 8, 15, 22 and 29, June 5 and 12



Clive Festival

As one of the best community festivals in the Des Moines metro area, the Clive Festival builds upon a nature theme to celebrate our beautiful Greenbelt Trail. Our schedule is packed with activities for both kids and adults to provide a well-rounded event for the entire community.

2026 dates: July 17-18



Ladies Night Bingo & Designer Handbag Fundraiser

This is not your grandma's bingo night! We will have wonderful prizes for each round of bingo and also a raffle for beautiful, authentic designer handbags. Funds raised will be used to create a college scholarship for a high school graduate from both the West Des Moines and Waukee school districts.

2026 date: Sept. 24



Business Trick or Treat

All ghosts and goblins are invited to wear costumes and collect yummy treats from local businesses. Enjoy an evening of free trick or treating and meet some of the amazing businesses right here in our community.

2026 date: Oct. 15



Mayor's Tree Lighting

Join us for the annual Mayor's Tree Lighting for the City of Clive. The family-friendly night will include a tree lighting, hands-on crafts, hot chocolate, cookie decorating, an arrival and visit from Santa, and much more!

2026 date: Dec. 4



TREATING YOU LIKE FAMILY



**PROVIDING THE HIGHEST
QUALITY + FRESHEST PRODUCE.**

FAREWAY®
MEAT & GROCERY



10151 UNIVERSITY AVE, CLIVE
(515) 223-0164



16035 HICKMAN RD, CLIVE
(515) 221-8488

FIND OUR WEEKLY AD, PROMOTIONS, RECIPES AND MORE AT WWW.FAREWAY.COM

OPEN 8AM – 9PM • MONDAY–SATURDAY • CLOSED SUNDAYS      

WHAT CHAMBER MEMBERS ARE SAYING

Becoming a member of the Clive Chamber of Commerce has been one of the most impactful decisions we've made at Walter Roofing. The Chamber has not only expanded our visibility in the community, but it has also connected us with passionate local business leaders who truly want to see each other succeed. Through networking events, educational opportunities and community initiatives, we've been able to build strong relationships that have translated into real growth for our company. The chamber's support has opened doors to new partnerships, strengthened our presence in Clive and allowed us to give back to the community in meaningful ways. We're proud to be part of an organization that champions collaboration, professionalism and community spirit. Walter Roofing is better today because of the connections and opportunities the Clive Chamber has created for us, and we look forward to continuing to grow alongside this incredible network.



JESSE AND SHELEASE RITTENHOUSE
Walter Roofing

JOCELYN SEVERIN
Jocelyn Severin
Insurance Agency



"I have been fortunate to meet and work alongside a group of talented individuals on the Clive Chamber Communications & Marketing Committee. Together, we are committed to promoting the Clive Chamber and supporting local businesses. It is truly satisfying to play a role in shaping the chamber's messaging and outreach efforts. Our meetings are productive, collaborative and enjoyable, with plenty of laughter and good teamwork. If you have a background in communications, marketing, or a related field, I highly recommend getting involved with the committee."



CINNAMON ROST
Owner/Graphic
Designer
1809 Design

"The Clive Chamber has been a great community to be part of. I've felt very welcomed and supported, and I've truly enjoyed building genuine relationships and strong connections. I appreciate how supportive and welcoming the chamber is to local businesses. They provide many opportunities to stay engaged — some of my favorites have been Morning Coffee Connections, an easy way to connect with other business professionals, as well as Ladies Bingo Night and Clive Trick-or-Treat, which have made it easy to connect with the community. If you're looking to get involved, build real relationships, and grow alongside other local businesses, I highly recommend joining the Clive Chamber."

"The Clive Chamber of Commerce has been instrumental in helping Spare Time Entertainment connect with the heart of Clive and beyond, after all, Clive has no boundaries. Their dedication to fostering a strong business community is evident in the wide range of events and initiatives they organize. From family-friendly activities like cookie decorating to networking opportunities to summertime fun with Food Truck Fridays, this chamber truly brings people together. We've seen firsthand how their efforts translate into increased visibility and engagement for our business. The Clive Chamber, like Spare Time, is dedicated to creating memorable experiences, every member, every day."



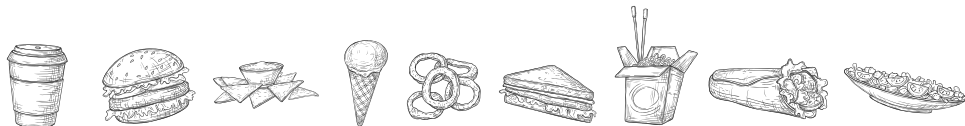
GARED HASSEL
Spare Time
Entertainment

"The Clive Chamber has been so good to us here at The Monroe! We have met so many wonderful people who truly care about their community, the people in it and helping others. We have gotten to attend so many great breakfasts, luncheons and other events the chamber has put on that has allowed us to connect with others, build relationships, and learn how to play our part in helping the community grow."



MARYSSA MCCUNN
The Monroe

CLIVE



Eats & Sweets

Winter, spring, summer or fall, you will find cool vibes, tasty eats and smooth drinks – indoors or out!

Scan their QR code to view their menu!



Aura Restaurant & Lounge

aura
RESTAURANT & LOUNGE

12851 University Ave, Clive
auradsm.com
(515) 225-6005

Locally owned and driven by a mission to provide an elevated experience, this award-winning hidden gem will ensure your next night out is a memorable one!




Cool Basil

1250 86th St, Clive
coolbasilcliveiowa.com
(515) 225-8111

Come and visit this family owned and operated establishment, serving you the tastiest Thai, Chinese and Japanese cuisine right in your neighborhood!




Izumi Sushi & Hibachi

泉 IZUMI
Sushi Hibachi

1301 NW 114th St, Clive
izumirestaurant-clive.2-mencities.com
(515) 979-4666

Specializing in sushi and hibachi, all you can eat! Made fresh to order. Open 7 days a week.




WHY BUSINESSES CHOOSE CLIVE



Location, Location, Location

Businesses benefit from Clive's centralized location and easy access to two major interstate systems (Interstates 35 and 80) and several main transportation corridors including University Avenue, Hickman Road, and N.W. 86th Street. Each of the main corridors carries between 25,000 and 30,000 vehicles daily. Clive also maintains two of the busiest intersections in the Des Moines metro area. The N.W. 100th Street/University Avenue and Hickman/N.W. 86th Street intersections carry approximately 100,000 vehicles daily, making Clive a primary destination for local and regional consumers.

Proximity

Historically, Clive served as a primary point for the railroad and coal mining areas. Today, its prime location is easily accessible from all directions of the Des Moines metro area as well as numerous regional metropolitan areas such as Chicago, Minneapolis/St. Paul, Kansas City, Omaha and St. Louis.

Opportunity

Clive businesses enjoy one of the lowest tax rates, and the community has the highest per capita income level in the metro area. Businesses seeking to cap their expenses and enhance their profit margins through a readily available customer base find Clive to be a perfect fit for their needs.

Qualified Workforce

A young, highly educated workforce awaits any business looking to locate within Clive. The community's median age is 35 with an estimated population of 18,600 after the 2020 census. Clive's residential base maintains an extremely large number of advanced degrees in the state, second only to Iowa City.

Quality of Life

Clive tops the lists of relocation options for a number of reasons: low residential taxes, high-quality educational systems, a vibrant public art initiative, and an exceptional offering of parks and recreational areas surrounding one of our best features, the Clive Greenbelt Trail system. "Clive Pride" is evident throughout the community from our clean, friendly neighborhoods to the beautiful streetscape project along N.W. 86th Street.

Please contact the Clive Chamber of Commerce at 515-222-5295 or info@clivechamber.org with any questions you may have regarding relocating your business within Clive.

We would welcome the opportunity to show you what makes Clive a community of distinction where your business will grow and prosper.



Your Partner in *Care*

Age well at home, knowing we'll be there for you whenever you need us. We're your comprehensive care partner, delivering support in your home:

- Home Health
- Non-Medical In-Home Services
- Palliative Care
- Hospice Care



Caring, Professional, Home-Based Services from a Single Provider

Call to learn more or to schedule a consultation: (515) 978-2777

MAYOR & CITY COUNCIL

Welcome from the City of Clive!

Clive is a great place to live because of its vibrant community, natural spaces, and excellent quality of life. Residents and businesses consistently give Clive high marks for safety, value for taxes paid and trust in their municipal government. Clive recently received the national award for Trust in Government from Polco's 2025 Best in Governance Awards – an honor reserved for communities that earn the highest scores in the National Community Survey.



Clive has almost 20,000 residents and encompasses 7.71 square miles. It is located at the crossroads of two interstate highways (35 and 80). Its central location in the Des Moines Metro area creates easy access to work, world-class art and culture, and exceptional schools. Our households in Polk and Dallas Counties have some of the lowest combined tax rates in the Des Moines metro for families.

Welcome to the City of Clive – it's distinct by nature!



John Edwards | Mayor of Clive
515-223-6220 | jedwards@cityofclive.com
1900 N.W. 114th St., Clive
Term Expires: 2029

CLIVE CITY COUNCIL MEMBERS



Sadie Gasparotto
515-867-5192
sgasparotto
@cityofclive.com
Term expires 2029



Breanne Hocker
563-419-5625
bhocker
@cityofclive.com
Term expires 2027



Susan Judkins
515-681-7878
sjudkins
@cityofclive.com
Term expires 2027



Eric Klein
515-971-6472
eklein
@cityofclive.com
Term expires 2029



Ted Weaver
515-339-5667
tweaver
@cityofclive.com
Term expires 2027

uplifting

LIFE 107.1

Listen on the **FREE App!**

There is No Place Like

THE OTHER PLACE

Scan for Menu!

PIZZA & SPORTS

**OVEN-BAKED SUBS
PASTA - SANDWICHES
SOUPS - SALADS
AND MUCH MORE!**

**EST. 1970 OPEN 11AM DAILY
DOORDASH FOR DELIVERY OPTIONS**

**12401 University Ave. Clive, IA
515-225-9494**

CITY AMENITIES



Clive's tagline, "Distinct by Nature," is embodied in the community's many parks, green spaces, and the exceptional Greenbelt Trail. For ease of access, the Greenbelt Trail includes trailheads at N.W. 86th Street, N.W. 100th Street, Campbell Recreation Area, and Wildwood Park. The trail is open for use year-round, as snow is removed from the trail during winter months. Clive hosts a total of 527 acres of park space and 19 miles of trail located within its city limits, providing a beautiful backdrop for a wide range of activities. Additionally, the Greenbelt Trail connects to the larger central Iowa trail system, with uninterrupted access to destinations across central Iowa. Alongside the Parks division, the recreation division plans and manages a variety of recreational programs for all age groups. Residents and visitors alike can participate in several sports and activities throughout the year.

The Clive Aquatic Center is an outdoor facility that is open during the summer, a fantastic place for visitors to cool off on a hot day. The facility features a zero-depth entry leisure pool, a 315-foot lazy river, a six-lane lap pool, three water slides and a children's sprayground. The Aquatic Center offers children's, adaptive, private, and adult swim lessons during its open season, and the facility can be rented out for special events. For more information about the facility, including hours, admission and rental information, visit cityofclive.com/parkandrecreation.

The Clive Aquatic Center will open in 2026 for Memorial Day weekend, then Saturday, May 30, for the season. Stay tuned to social media for pop-up programs and weather-related closures.

The Clive Public Library offers a range of resources and programs designed to entertain and educate. Visitors can check out items from a great collection of printed materials, media and nontraditional items that help a diverse community learn and grow. The Clive Public Library serves as a community hub with features such as rentable laptops, study rooms and spaces for youth and teens to discover, hang out and learn. Stop by the Clive Public Library at 1900 N.W. 114th St., and sign up to get a library card today.

Melissa Johnson, RN

of Luxe Aesthetics, Premier Medical Spa Providing
Facials, Botox, Fillers and Much More!



"Melissa is kind and so good at what she does. She cares about more than appearance, wanting to make her patient's feel worthy of looking and feeling their best."

— KWM



LUXE AESTHETICS

Daniel J. Baldi, DO - Medical Director



Schedule Your
Appointment
Today!

515.401.4683
1349 NW 121st St, Ste 300
Clive, IA

Thank you for voting us

TOP 3

in Des Moines!

When it comes to your
health, we've got
you covered.



- ✓ Health Insurance
- ✓ ACA Marketplace Alternatives
- ✓ Vision & Dental Insurance
- ✓ Home Health Insurance
- ✓ Medicare Supplement Plans
- ✓ Annuities
- ✓ Travel Insurance



AKP HEALTH
INSURANCE

974 73rd St. West Des Moines
(515) 490-4286 | akphealthinsurance.com

CITY AMENITIES



The City of Clive is home to several permanent, commissioned artworks that celebrate our community and history. Art can be seen along the Greenbelt Trail, at Clive's parks, and at the Clive Public Library. The City of Clive will introduce new public art pieces and programs in 2026!



In 2022, the Harbach Center opened in the former Public Safety building located at 8505 Harbach Blvd. near Linnan Park. The center hosts an east side branch of the Clive Public Library, a community room, and a large recreation space for both organized and open play. Hours of operation and a calendar of events for the Harbach Center can be found at cityofclive.com/harbachcenter.

A group of approximately 20 employees of Barnum Floors standing in front of their brick building. The building has "BARNUM FLOORS" written in large red letters on the facade. The employees are wearing dark-colored shirts and are smiling for the camera. In the foreground, there is a large circular logo for Barnum Floors that says "Greatest Floors on Earth" and "BARNUM FLOORS".

BARNUM FLOORS



Specializing in real wood floors, new installation, restoration of existing hardwood, vintage & handscraped woods, burnished finishes, custom stains, medallions, staircases, custom borders, parquets and Mirage pre-finished hardwood.

9460 Swanson Blvd, Clive | www.barnumfloors.com | 515-270-2211

NEW TO CLIVE?

Gas and Electricity

MidAmerican Energy..... 1-888-427-5632

Water and Sewer

Clive Utility Billing Department..... 515-867-5199

Clive Public Works Department..... 515-223-6231

Cable, Internet and Telephone

Mediacom 1-855-633-4226

CenturyLink1-866-642-0444

Mi-Fiber1-844-499-0399

Metronet.....1-877-407-3224

Garbage, Recycling and Yard Waste

Garbage pickup is weekly, but recycling carts are emptied every other week. Please refer to the sticker on the lid for your pick-up schedule. For yard waste disposal, Clive has Compost It! stickers that can be purchased at City Hall and attached to the waste that needs to be picked up.

Clive City Hall515-223-6220

Metro Waste Authority.....515-244-0021

Dog and Cat Licenses

A license can be obtained at www.petdata.com/clive.

Licenses must be submitted with a copy of rabies certificate and proof of spay/neuter if applicable. License Fees:

Altered Cat: \$17

Intact Cat: \$24

Altered Dog: \$19

Intact Dog: \$29

Pet Data 1-833-991-0934

Leisure Services

Parks and Recreation Information515-223-5246

Clive Aquatic Center 515-440-0599

Public Library Information 515-453-2221

Community Development

If you have any questions regarding building permits, zoning regulations, engineering or sign permits, contact the City Community Development Department.

Clive Community Development

Department..... 515-223-6221

Director: Doug Ollendike



Administration

If you have any questions regarding City Council agenda, official city records, city employment matters or general city inquiries, contact the City Clerk's office.

City Hall515-223-6220

www.cityofclive.com

City Manager: Matt McQuillen

City Clerk: Matthew Graham

Fire/EMS

Administrative Offices: 8800 Hickman Road, Clive

Emergency911

Non-Emergency 515-223-1595

Fire Chief: Clay Garcia

Police

Administrative Offices: 8800 Hickman Road, Clive

Emergency911

Non-Emergency515-278-1312

Police Chief: Mark Rehberg

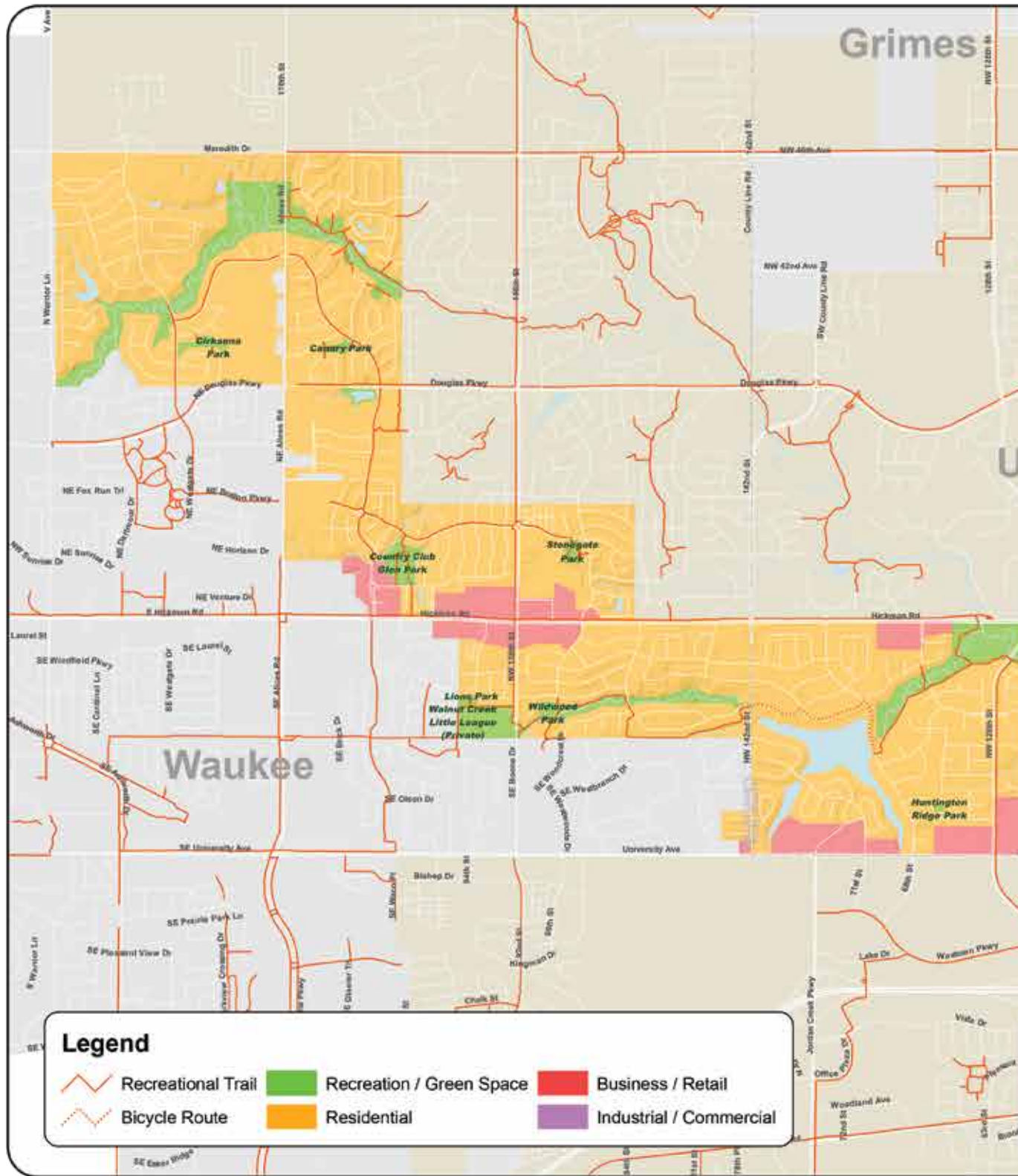
Public Works

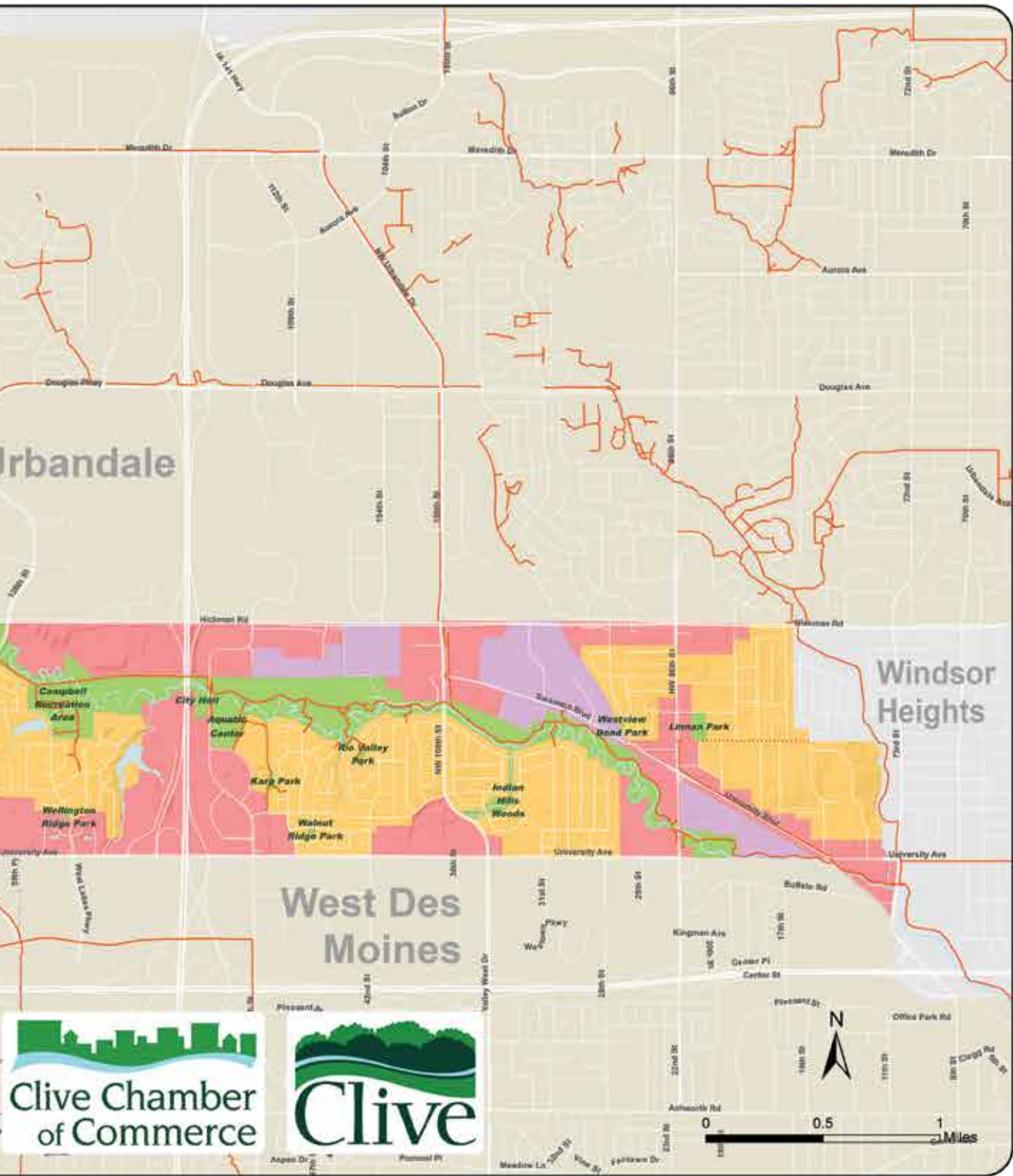
2123 N.W. 111th St., Clive

General Information..... 515-223-6231

Director: Jeff May

CLIVE AREA MAP





CIVIC ORGANIZATIONS



A number of active civic organizations are based in Clive. These organizations offer Clive residents the opportunity to volunteer their time and talents and actively engage in building a stronger community through their service.

Clive Chamber of Commerce

The Clive Chamber of Commerce is focused on offering services and benefits to support both the local business community and the Clive community as a whole. The organization offers ribbon cuttings for new businesses, monthly networking programs, and leadership and volunteer opportunities for residents and business professionals. For more information or a membership application, go to www.clivechamber.org.

Clive Lions Club

The Clive Lions Club has served the local community since 1977. Dedicated to community service and following their motto, "We Serve," the Clive Lions Club sponsors Scout Packs, has an annual holiday food and toy project for families in need, spends hundreds of hours annually conducting eye exams for preschoolers, and helps with numerous other community service projects. This group additionally selects and honors the Citizen of the Year.

Clive Community Foundation

The Clive Community Foundation (CCF) is a conduit for connecting donors with causes they care about. The CCF Community Priorities program focuses on three primary areas: Quality of Life Initiatives, Community Health & Wellness, and Community Collaboration. The CCF identifies programs or services that are important to the continued prosperity of the city and its residents. The CCF is an affiliate of the Community Foundation of Greater Des Moines and is held to rigorous expectations and financial accountability. The foundation facilitates the investment of financial resources to advance the city and optimizes the living experience of the residents through a variety of programs and services. For more details on the Clive Community Foundation or to make a donation, go to www.clivecommunityfoundation.org.

Clive Community Services (CCS)

Clive Community Services (CCS) is a community-supported organization that provides free human services to all in need. The organization was established in 2014 as a 501(c)3 nonprofit organization to serve the Clive community. It operates a food pantry in partnership with the Des Moines Area Religious Council (DMARC). CCS also offers personal care items, clothing, classes for English Language Learners and a free medical clinic in partnership with Free Clinics of Iowa. CCS is completely financed by grants and donations and depends on volunteers to operate. To learn more, call 515-257-8550, email director@clivecommunityservices.com, or visit clivecommunityservices.com.

WayPoint Resources

WayPoint Resources (formerly known as Waukee Area Christian Services) provides food, clothing, healthcare, and other essential support to those in need in our community. From serving individuals at a food pantry to distributing clothing and rescuing thousands of pounds of food, WayPoint Resources is dedicated to supporting individuals and families during times of hardship. They also offer many ways for the community to get involved. Making a financial donation, volunteering your time, or hosting a food or clothing drive can make a meaningful difference. To learn more about the work WayPoint Resources is doing, visit waypoint.care or call 515-987-5523.

DESIGNED *for the* BUSINESS TRAVELER

ENJOY YOUR STAY IN WAUKEE

See how rewarding the world really is. Earn nights, experiences and more. Turn up the volume on your travel plans.

CORPORATE COMFORT ELEVATED

- Sustainability Program • Fresh Linens
- Restaurant & Bar • Convenience Store
- Business Center • Indoor Pool
- Conference Room • Fitness Center
- On-Site Laundry • **Pet Friendly!**

RESERVE TODAY!

aloft
HOTELS

2848 Grand Prairie Pkwy
Waukee, IA • 515.412.0973



Ready to Buy?

We've Got You Covered!

VisionBank mortgages come equipped with low rates, no application fees, and a fast approval process. Best of all, our VisionBank mortgage lenders provide the hassle-free, money-saving experience you deserve.

MEET YOUR MORTGAGE LENDERS



Mike Kentfield

VP | Mortgage & Consumer Lender / Metro Business Development Officer

(515) 226-3302 | mike.kentfield@visionbank.com | NMLS# 644434



Mike Painovich

VP | Mortgage & Consumer Lender

(515) 416-7510 | mike.painovich@visionbank.com | NMLS# 717980

WEST DES MOINES COMMUNITY SCHOOL DISTRICT

Hi, I'm Matt Adams, superintendent for West Des Moines Community Schools (WDMCS). We are proud to be a part of the vibrant and supportive City of Clive. Our schools are more than just buildings — they are cornerstones of the community, reflecting the values and aspirations of its residents. The success of our students is the result of the strong partnership we cultivate between our schools, families and the community.

The support and trust of our community was on full display in November 2025 when voters approved WDMCS' \$135 million general obligation bond. Funds from the bond will be used to fund key facility updates and new construction across the district, including projects at Crestview School of Inquiry and Indian Hills Junior High. By completing the projects included in the bond, we seek to enhance student learning, expand access to activities and attract and retain students and staff.

This is an exciting time at WDMCS. In addition to the community's approval of the general obligation bond, we are in our second year of our strategic plan. Representing the collective



WEST DES MOINES
COMMUNITY SCHOOLS
Innovative Spirit. Inspiring Success

vision of our students, families, staff and community, the plan is shaping the experience of those in our district. We are all sharing the responsibility to educate, empower and inspire our students to be lifelong learners.

Thank you for your continued support of our schools and our students. Together, we're building futures — bright futures — here at West Des Moines Community Schools.

Sincerely,
Dr. Matt Adams, *Superintendent*
WDMCS



CENTRAL IOWA'S PREMIER ROOFING COMPANY

ROOFING • SIDING • DECKS • ADDITIONS • REMODELS • & MORE



CALL OUR TEAM TODAY!
(515) 689-3700!

Locally Owned & Operated



WAUKEE COMMUNITY SCHOOL DISTRICT

Choose growth. Choose innovation. Choose Waukee.

Waukee Community School District offers the opportunities of a large district with the feel of a close-knit community. Serving more than 14,000 students across 20 schools in Waukee, West Des Moines, Urbandale and Clive, Waukee CSD is committed to helping every student thrive.

One exciting offering is our Transitional Kindergarten (TK) program, designed for kindergarten-aged children who would benefit from an additional year of growth before entering traditional kindergarten. This full-day program, housed in our elementary schools, provides smaller class sizes, focused social-emotional development, and a thoughtfully paced introduction to academic content and classroom routines.

Our mission extends far beyond graduation. We prepare students for the "Monday after graduation" by equipping them with academic knowledge, emotional wellbeing, and real-world skills. Career exploration begins in elementary school and continues through high school with assessments, networking opportunities, and a student-exclusive job board.



High school students can participate in APEX (Aspiring Professional Experience), earning real-world experience with local businesses; pursue CNA or EMT certification; enroll in Career and Technical Education courses; explore teaching through Intro to Education; or complete six-month school-to-work internships with partners such as The Iowa Clinic and Drake University.

Additionally, all second and third grade students participate in our Aquatic Experiences program at the Waukee CSD Natatorium, receiving five days of swimming and water safety instruction. Learn more at waukeeschools.org.

Sincerely,
Dr. Brad Buck, *Superintendent*
WCSD



FLOORS

DIRECT

Say *Yes* to Paying *Less*

www.floorsdirectiowa.com

2239 NW 108th St Clive, IA 50325

South of Hickman Road
Next to Mueller Recreation

Open 6 Days/Week



515-270-3885



[floorsdirectiowa](https://www.facebook.com/floorsdirectiowa)



[floors_direct](https://www.instagram.com/floors_direct)

MEMBERSHIP DIRECTORY — BY CATEGORY

ADVERTISING/SPECIALTIES

American Solutions for Business
Triplett Office Solutions

ANIMAL

Stylin Paws Salon and Day Stay

ANIMAL/TRAINING

Dog Training Elite Des Moines

ANIMAL/VETERINARIANS

Waukee-Clive Veterinary Clinic

AUTOMOTIVE/DEALERS

Stew Hansen Buick GMC

AUTOMOTIVE/SERVICE

Christian Brothers Automotive
Lane's Fast Lube, Inc.
Mike's Auto Service
Westside Auto Pros

BUSINESS SERVICES/PERSONAL ASSISTANCE

All Things Errands and Concierge

CHILDREN

FrogFun Toy Library

CLEANING-MAINTENANCE

American Softwash
Rush Rolloffs

CLEANING-MAINTENANCE/DISASTER

ServiceMaster by Rice

COMMUNICATIONS/MAGAZINES

Iowa Living Magazines

COMMUNICATIONS/RADIO

Life 107.1

COMPUTER/EQUIPMENT

Electronic Office, LLC

CONSTRUCTION

Pivot Construction, LLC

CONTRACTOR

Better Builders
BIG Roofing
Buresh Home Solutions
Neu Blinds

CONTRACTORS/ELECTRICAL

Baker Electric, Inc.

CONTRACTORS/HANDYMAN

Ace Handyman Services West Des Moines

CONTRACTORS/HOME BUILDERS

Eden + Gray Design Build

CONTRACTORS/KITCHEN & BATH

Kitchen Refresh by KnoPros

CONTRACTORS/LAWN MAINTENANCE

Mowtivated Lawncare LLC

CONTRACTORS/PAINTERS

CertaPro Painters
Freshcoat Painters of Des Moines

CONTRACTORS/PLUMBING

Clog Busters Drain Cleaning & Repair
Schlievert Plumbing, Inc.

CONTRACTORS/ROOFING-GUTTERS

Black Shield Roofing and Construction
Heartland Roofing, Siding, and Solar
Wagoner Roofing and Construction
Walter Roofing

CONTRACTORS/WINDOWS

America's Best Choice of Des Moines

EDUCATION/PUBLIC

Waukee Community Schools
West Des Moines Community Schools

EMERITUS

Chuck Jones
Claudia Howell
Mary Anne Kennedy
Scott Cirksena

EMPLOYMENT/HUMAN RESOURCES

HR Excellence Consulting

EMPLOYMENT/OUTPLACEMENT

Goodwill of Central Iowa

ENTERTAINMENT-RECREATION

Horizon Events Center
Spare Time Entertainment

ENTERTAINMENT-RECREATION/ATTRACTIONS

Escapology Clive
Vibrant Music Hall

ENTERTAINMENT-RECREATION/DISC JOCKEYS

Complete Weddings + Events

ENTERTAINMENT-RECREATION/VISITOR INFORMATION

Catch Des Moines

ENVIRONMENTAL/WASTE MANAGEMENT

Metro Waste Authority

EVENTS/MANAGEMENT

InnovativEvents, Inc.

EVENTS/RENTAL SERVICES

LED Marquee Des Moines
Metro Rental
Sherwood Forest Event Center

EVENTS/SPECIAL EVENTS

The Monroe

FACILITIES/BANQUET FACILITIES

West Des Moines Marriott

FACILITIES/MEETING ROOMS

Des Moines Urbandale Hilton
Garden Inn

FINANCE

Vision Financial Services

FINANCE/ACCOUNTANTS

Gray Financial Solutions, Inc

FINANCE/BANKS

Bankers Trust - Clive Branch
Farmers State Bank
First Interstate Bank
Fortress Bank
Great Southern Bank
Iowa State Bank
Iowa Trust
Lincoln Savings Bank
Luana Savings Bank
Midwest Heritage Bank
MidWestOne Bank
Northwest Bank
Peoples Bank
UMB Bank
VisionBank

FINANCE/CREDIT UNIONS

GreenState Credit Union

FINANCE/INVESTMENTS

Morgan Stanley
Rundahl Financial Consultants
Trust Bridge Wealth Advisors

FINANCE/RETIREMENT PLANNING

Simply Sophisticated Wealth Planning

FINANCE/TAX SERVICES

H&R Block

FITNESS

Aptitude Fitness
Fly Dance Fitness Des Moines
MercyOne Health and Fitness
Orangetheory Fitness Clive

FOOD-BEVERAGE

Fierce Nutrition

FOOD-BEVERAGE/BAKERIES

5 Borough Bakery
Nothing Bundt Cakes
The Bake Shoppe
The Bake Shoppe Waukee

FOOD-BEVERAGE/CATERING

In the Bag Corporate Cuisine
Jason's Deli
Sunflower Chef Catering

FOOD-BEVERAGE/COFFEE

7 Brew Iowa
A SweetDude LLC

FOOD-BEVERAGE/GROCERS

Fareway Stores, Inc.

GOVERNMENT/CITY

City of Clive

GOVERNMENT/COUNTY

Polk County Board of Supervisors

HEALTH & BEAUTY

vIVid Wellness + Aesthetics

HEALTH & BEAUTY/CONSULTANTS

Luxe Aesthetics

HEALTH & BEAUTY/SALONS-SPAS

ReNew You Spa and Suites LLC

HEALTH CARE - HEALTH CARE PROVIDERS

Capital Orthopaedics and Sports Medicine PC
GRACE Breast Imaging & Medical Spa
The Iowa Clinic

HEALTH CARE/CHIROPRACTORS

HealthSource of Clive

HEALTH CARE/CLINICS

Bodhi Acupuncture and Wellness
Oral Surgeons, PC

HEALTH CARE/HOSPITALS

MercyOne Clive Rehabilitation Hospital

HEALTH CARE/MENTAL HEALTH

Clive Behavioral Health
Daybreak Counseling Inc.

HEALTH CARE/OPTOMETRISTS

Heartland Family Eyecare
Premier Vision Clinic

HEALTH CARE/PHYSICIANS

Iowa Digestive Disease Center
Waggoner Pediatrics of Central Iowa

HEALTH CARE/SERVICES

MercyOne Comfort Health Center for Women
Walnut Creek Family YMCA
WellForm MD

HOTEL-MOTEL

Best Western Plus
Courtyard by Marriott
Hilton Garden Inn West Des Moines
Hyatt Place West Des Moines/Jordan Creek
La Quinta Inn & Suites
Sheraton West Des Moines Hotel
SpringHill Suites by Marriott
Wildwood Lodge

HUMAN SERVICES/SOCIAL SERVICES

Clive Community Services
WayPoint Resources

INDIVIDUAL MEMBERSHIP

Eric Klein
Loretta Sieman

INSURANCE-FINANCE

ICAP

INSURANCE-FINANCE/AGENTS

Country Financial
Horace Mann
Jocelyn Severin Insurance Agency
Kelli Kerton State Farm Insurance
Middendorf Insurance Associates
NCMIC Group, Inc./Professional Solutions
State Farm Insurance - Andrew Peschong
The Dana Company

INSURANCE-FINANCE/SERVICES

Shahna Magee Agency - Farm Bureau Financial Services

INTERNET/WEB SITE DESIGN

Hatch DSM, LLC
Webspec

LEGAL SERVICES/ATTORNEYS

Sullivan & Ward, P.C.

MANUFACTURING

Auto Jet Muffler Corporation

MANUFACTURING/BEVERAGES

Blue Ox Spirits

MANUFACTURING/FOOD

Marzetti Frozen Pasta

MOVING/SERVICES

Two Men and A Truck

ORGANIZATIONS/ASSOCIATIONS

Iowa Pork Producers Association
National Pork Board
Policy Works LLC

ORGANIZATIONS/CHAMBERS OF COMMERCE

Clive Chamber of Commerce
Greater Des Moines Partnership

ORGANIZATIONS/FOUNDATIONS

Clive Community Foundation

ORGANIZATIONS/NONPROFIT

American Foundation for Suicide Prevention Iowa
Big Brothers Big Sisters of Central Iowa
Christ-Life Ministries, Inc.
Food Bank of Iowa
Healthy Birth Day, Inc.
LifeServe Blood Center
The Salvation Army Capital Area Coordination Office

ORGANIZATIONS/SERVICE CLUBS

Clive Lions Club

PHOTOGRAPHY

Terry Snyder Photography

PRINTING

COPYWORKS
Rapids Reproductions, Inc.

PROFESSIONAL-DESIGN SERVICES/ENGINEERS

McClure
Schemmer Associates, Inc.

PROFESSIONAL-DESIGN SERVICES/GRAPHIC DESIGN

1809 Design

REAL ESTATE

Integrated Asset Management-IAM
Next Generation Realty
SoldFast

REAL ESTATE/AGENTS

Century 21 SRE
JKK Real Estate
LPT Realty - Legacy Realty of Iowa

REAL ESTATE/APARTMENTS

Country Court Apartments
Fairmeadows Village
The McCoy @ 8035
The Vibe @ 8035
Urban Green Apartments
Village at Grays Lake

REAL ESTATE/COMMERCIAL

Frontier Coworking
Signature Commercial Real Estate, Inc.

REAL ESTATE/SURVEYORS

Beck Engineering, Inc.

RELIGIOUS AFFILIATIONS

Calvary Chapel Living Hope
Living Faith Lutheran Church
Pure Land of Iowa

RESTAURANTS

5 Borough Bagels
5 Borough Bagels - Urbandale
85 Bar West
Aura Restaurant and Lounge
Burger Shop
Cooper's Hawk Winery & Restaurant
Gilroy's
Izumi Sushi & Hibachi, Inc
Jersey Mike's Subs
Machine Shed Restaurant
Nick's Bar and Grill
Snack & Go
Subway
Tasty Tacos, Inc
The Other Place
The Tavern Pizza
The Tavern Pizza Valley Junction

RETAIL-SHOPS-STORES

Becky's Hallmark
Bud & Mary's
Fareway Stores, Inc.
KSH Design Studio, LLC
Merle Norman Cosmetics
Zoom Room Dog Training

RETAIL-SHOPS-STORES/APPLIANCES

Nebraska Furniture Mart

RETAIL-SHOPS-STORES/CONSIGNMENT

Many Hands Thrift Market
Stuff Etc Quality Consignment

RETAIL-SHOPS-STORES/CONVENIENCE

Kwik Star
Love's Travel Stops

RETAIL-SHOPS-STORES/COSTUMES-DANCE

Elite Dance Outfitters, LLC

RETAIL-SHOPS-STORES/FLOORING

Barnum Floors
Flooring America
Floors Direct

RETAIL-SHOPS-STORES/GIFT ITEMS

Board and Brush Creative Studio

RETAIL-SHOPS-STORES/JEWELERS

Anglo International
Iowa Diamond
Prism Jewelry & Piercing
Windsor Clock & Watch

SENIORS/REAL ESTATE

Meadowview of Clive
Walnut Ridge
Woodlands Creek Senior Living

SIGNAGE FASTSIGNS**TRANSPORTATION**

Enterprise Mobility Truck Rental Division

TRANSPORTATION/PUBLIC

Des Moines Area Regional Transit Authority

UTILITIES/UTILITY COMPANIES

MidAmerican Energy Company

WELLNESS/FITNESS

Anytime Fitness West Des Moines
22nd St

WELLNESS/THERAPEUTIC MASSAGE

Iowa Family Massage
Massage Envoy

THANK YOU TO OUR PREMIUM MEMBERS



Bankers Trust®

BankersTrust.com

Member FDIC



MEMBERSHIP DIRECTORY — ALPHABETICAL

PLATINUM MEMBER

1809 DESIGN

1809design.com
(515) 989-1809

5 Borough Bagels

13435 University Ave., Suite 300,
Clive, IA 50325
5BoroughBagels.com
(515) 809-1807

5 Borough Bagels - Urbandale

11101 Plum Drive, Urbandale, IA 50322
5boroughbagels.com
(515) 214-1837

5 Borough Bakery

272 W. Hickman Road, Waukee, IA 50263
5boroughbagels.com
(515) 508-1273

7 Brew Iowa

15610 Hickman Road, Clive, IA 50325
7Brew.com
(515) 304-5923

85 Bar West

432 E. Hickman Road, Waukee, IA 50263
85barwest.com
(515) 800-8558

A SWEETDUDE LLC

9763 University Ave., Clive, IA 50325
(515) 509-0915

ACE HANDYMAN SERVICES

WEST DES MOINES

2175 N.W. 86th St., Suite 6A, Clive, IA 50325
acehandymanservices.com/offices/west-
des-moines
(515) 309-9922

All Things Errands and Concierge

112 10th St., Unit 108, Des Moines, IA 50266
(515) 301-2815

American Foundation for Suicide Prevention Iowa

P.O. Box 446, Osceola, IA 50213
afsp.org/iowa
(515) 508-0195

American Softwash

1300 N.E. 56th Ave., Suite 57040,
Des Moines, IA 50317
asoftwash.com
(515) 329-5157

GOLD MEMBER

American Solutions for Business

2815 100th St., Suite 105, Urbandale, IA 50322
americanprintpromo.com
(515) 276-1232

AMERICA'S BEST CHOICE OF DES MOINES

8450 Hickman Road, Suite 20, Clive, IA 50325
abcwin.com/des-moines-ia/windows/
(515) 276-6506

Anglo International

12851 University Ave., Suite 100, Clive, IA 50325
anglodiamond.com
(515) 254-0100

ANYTIME FITNESS WEST DES MOINES 22ND STREET

1560 22nd St., West Des Moines, IA 50266
anytimefitness.com/locations/west-des-
moines-iowa-347
(515) 903-3755

Aptitude Fitness

8033 University Blvd., Clive, IA 50325
aptitudedsm.com
(515) 732-5744

AURA RESTAURANT AND LOUNGE

12851 University Ave., Suite 400,
Clive, IA 50325
auradsm.com
(515) 225-6005

Auto Jet Muffler Corporation

9550 Swanson Blvd., Clive, IA 50325
auto-jet.com
(515) 224-0460

Baker Electric, Inc.

111 Jackson Ave., Des Moines, IA 50315
bakerelectric.com
(515) 241-9288

BANKERS TRUST - CLIVE BRANCH

11111 University Ave., Clive, IA 50325
bankerstrust.com
(515) 222-2003

Barnum Floors

9460 Swanson Blvd., Clive, IA 50325
barnumfloors.com
(515) 270-2211

Beck Engineering, Inc.

2480 Berkshire Parkway, Suite B, Clive, IA 50325
beck-engineering.net
(515) 330-1538

SILVER MEMBER

Becky's Hallmark

10201 University Ave., Suite B4, Clive, IA 50325
stores.hallmark.com/ia/clive/
(515) 225-1333

BEST WESTERN PLUS

1450 N.W. 118th St., Clive, IA 50325
bestwestern.com/en_US/book/hotel-
rooms.16097.html?iata=00171880&ssob=BLBW
I0004G&cid=BLBWI0004G:google:gmb:16097
(515) 221-2345

Better Builders

2855 104th St., Urbandale, IA 50322
betterbuildersiowa.com/
(515) 422-1030

Big Brothers Big Sisters of Central Iowa

2130 Grand Ave., Des Moines, IA 50312
bbbsia.org
(515) 288-9025

BIG ROOFING

5751 N.E. 22nd St., Suite 304,
Des Moines, IA 50313
bigroofingllc.com
(515) 777-5007

BLACK SHIELD ROOFING AND CONSTRUCTION

3204 Brookview Drive,
West Des Moines, IA 50265
blackshieldroofing.com
(515) 400-3706

BLUE OX SPIRITS

1631 N.E. 55th Ave., Des Moines, IA 50313
blueoxspirits.com
(515) 650-8079

BOARD AND BRUSH CREATIVE STUDIO

12871 University Ave., Suite 150, Clive, IA 50325
boardandbrush.com/clive
(515) 850-8201

Bodhi Acupuncture and Wellness

8814 1/2 Swanson Blvd., Clive, IA 50325
bodhiacupuncturedesmoines.com
(515) 512-6909

BUD & MARY'S

7239 Apple Valley Drive,
Windsor Heights, IA 50324
budmary.com
(515) 410-9100

PRESIDENT'S CLUB

MEMBERSHIP DIRECTORY — ALPHABETICAL

Buresh Home Solutions

9379 Swanson Blvd., Clive, IA 50325
bureshhomesolutions.com
(515) 274-2957

Burger Shop

1255 N.W. 128th St., Suite 100, Clive, IA 50325
(515) 223-5244

Calvary Chapel Living Hope

9051 Swanson Blvd., Clive, IA 50325
cclivinghope.com
(515) 553-9739

CAPITAL ORTHOPAEDICS AND SPORTS MEDICINE PC

12499 University Ave., Suite 210,
Clive, IA 50325
dsmcapitalortho.com
(515) 440-2676

Catch Des Moines

400 Locust St., Suite 265, Des Moines, IA 50309
catchdesmoines.com
(515) 286-4960

CENTURY 21 SRE

2300 N.W. 128th St., Urbandale, IA 50323
eileensellsiowa.com
(515) 490-8816

CertaPro Painters

2771 104th St., Suite G, Urbandale, IA 50322
certapro.com
(515) 255-9717

Christian Brothers Automotive

15250 Hickman Road, Clive, IA 50325
CBAC.com/Clive
(515) 902-0354

Christ-Life Ministries, Inc.

1900 N.W. 86th St., Clive, IA 50325
clcenter.org
(515) 251-6838

Chuck Jones

(515) 710-4221

City of Clive

1900 N.W. 114th St., Clive, IA 50325
cityofclive.com
(515) 223-6220

Claudia Howell

(515) 321-1948

CLIVE BEHAVIORAL HEALTH

1450 N.W. 114th St., Clive, IA 50325
clivebehavioral.com
(844) 680-0504

Clive Chamber of Commerce

1900 N.W. 114th St., Clive, IA 50325
clivechamber.org
(515) 222-5295

CLIVE COMMUNITY FOUNDATION

clivecommunityfoundation.org
(515) 360-2626

CLIVE COMMUNITY SERVICES

2190 N.W. 82nd St., Suite A, Clive, IA 50325
clivecommunityservices.com
(515) 257-8550

Clive Lions Club

1679 N.W. 98th St., Clive, IA 50325
iowalions.org/clive

WE ARE COMMITTED TO MAKING YOUR EXPERIENCE AS PAINLESS AS POSSIBLE!



- ✓ Shuttle service to and from
- ✓ No to low cost rental cars
- ✓ Waiter appointments to get you in and out
- ✓ Pick up and delivery of your vehicle from home or work
- ✓ Lifetime warranty on most parts and labor
- ✓ One stop for all your maintenance and repairs. Tire, brakes, batteries, engines and transmission!

Valid on most repairs, some restrictions apply

**Westside
AUTO PROS**

**Family Owned & Operated,
Full-Service Auto Repair**

1901 NW 92nd, Clive
515-225-9090
westsideautopros.com

Hours: M-F: 7:30a.m. - 5:30p.m.

CLOG BUSTERS DRAIN CLEANING & REPAIR

3950 Vandalia Road, Des Moines, IA 50317
clogbustersdsm.com
(515) 236-5520

Complete Weddings + Events

7600 University Ave., Suite A,
Clive, IA 50325
completewedo.com/des-moines/
(515) 266-1355

COOPER'S HAWK WINERY & RESTAURANT

12801 University Ave., Clive, IA 50325
chwinery.com
(515) 513-3330

COPYWORKS

105 Welch Ave., Ames, IA 50014
copyworks.com
(515) 291-3159

Country Court Apartments

395 Fourth St., Office #2, Waukee, IA 50263
countrycourtapts.com
(515) 987-4356

Country Financial

1300 50th St., Suite 100,
West Des Moines, IA 50266
(515) 278-5840

COURTYARD BY MARRIOTT

1520 N.W. 114th St., Clive, IA 50325
marriott.com/hotels/travel/dsmch-
courtyard-des-moines-west-clive/
(515) 225-1222

Daybreak Counseling Inc.

12035 University Ave., Suite 202, Clive, IA 50325
daybreakcounselinginc.com
(515) 650-2627

DES MOINES AREA REGIONAL TRANSIT AUTHORITY

620 Cherry St., Des Moines, IA 50309
ridedart.com
(515) 283-8100

Des Moines Urbandale Hilton Garden Inn

8600 Northpark Drive, Johnston, IA 50131
hilton.com/en/hotels/dsmuhgi-hilton-
garden-inn-des-moines-urbandale/
(515) 720-8890

DOG TRAINING ELITE DES MOINES

8801 University Ave., Suite D-22, Clive, IA 50325
dogtrainingelite.com/des-moines
(515) 771-0673

Eden + Gray Design Build

2005 N.W. 100th St., Clive, IA 50325
edenandgray.com
(515) 975-5527

ELECTRONIC OFFICE, LLC

939 Office Park Road, Suite 121,
West Des Moines, IA 50265
electronicbiz.com
(515) 244-4155

Elite Dance Outfitters, LLC

9962 Swanson Blvd., Clive, IA 50325
elitedanceoutfittersia.com
(515) 276-6115

Enterprise Mobility Truck Rental Division

2551 100th St., Urbandale, IA 50322
enterprisetrucks.com/truckrental/en_US.html
(515) 278-1976

LUANA SAVINGS BANK

VOTED METRO'S BEST BANK 2020 - 2025

LuanaSavingsBank.com

450+ Google Reviews

Central Iowa
Polk City • Clive • Norwalk

Northeast Iowa
Luana • Ossian • New Hampton

Member FDIC

515-987-2116

16390 Holcomb Ct. Clive, IA 50325
Across from Stivers Ford

Local People. Local Decisions. Local Investments. Since 1908.

MEMBERSHIP DIRECTORY — ALPHABETICAL

Eric Klein

14938 Summit Drive, Clive, IA 50325
(515) 971-6472

ESCAPOLOGY CLIVE

8801 University Ave., Suite 107A,
Clive, IA 50325
escapology.com/en/clive-ia
(515) 420-0304

Fairmeadows Village

2625 Vine St., West Des Moines, IA 50265
rentfairmeadows55.com
(515) 222-4469

Fareway Stores, Inc.

10151 University Ave., Clive, IA 50325
farewaystores.com
(515) 223-0164

Fareway Stores, Inc.

16035 Hickman Road, Clive, IA 50325
fareway.com
(515) 221-8488

Farmers State Bank

9750 University Ave.,
West Des Moines, IA 50266
fsb1879.com
(877) 372-1879

FASTSIGNS

1791 N.W. 86th St., Clive, IA 50325
fastsigns.com/42
(515) 224-1210

Fierce Nutrition

7220 University Ave.,
Windsor Heights, IA 50324
facebook.com/fiercewindsorheights
(515) 205-3538

First Interstate Bank

10101 University Ave., Clive, IA 50325
firstinterstatebank.com
(515) 223-1607

FLOORING AMERICA

10200 Hickman Road, Clive, IA 50325
iowaflooringamerica.com
(515) 331-4613

FLOORS DIRECT

2239 N.W. 108th St., Clive, IA 50325
floorsdirectiowa.com
(515) 270-3885

FLY DANCE FITNESS DES MOINES

9914 Swanson Blvd., Clive, IA 50325
flydancefitness.com
(386) 852-3374

Food Bank of Iowa

2220 E. 17th St., Des Moines, IA 50316
foodbankiowa.org
(515) 564-0330

Fortress Bank

5000 Westown Parkway, Suite 420,
West Des Moines, IA 50266
bankfortress.com
(515) 480-4119

Freshcoat Painters of Des Moines

1240 Spruce St., Waukee, IA 50263
freshcoatpainters.com
(641) 750-8092

FROGFUN TOY LIBRARY

8350 Hickman Road, Suite 17, Clive, IA 50325
frogfuntoylibrary.com
(515) 257-4000

Frontier Coworking

13137 University Ave., Suite 120,
Clive, IA 50325
frontiercoworking.com
(515) 991-2353

Gilroy's

1238 Eighth St., West Des Moines, IA 50265
gilroykitchen.com
(515) 809-1727

Goodwill of Central Iowa

5355 N.W. 86th St., Johnston, IA 50131
dmgoodwill.org
(515) 777-0780

GRACE Breast Imaging & Medical Spa

1250 N.W. 128th St., Suite 130, Clive, IA 50325
graceimagingandspa.com
(515) 505-3224

Gray Financial Solutions, Inc

2500 W. Second Ave., Indianola, IA 50125
grayfinancialsolutions.com
(515) 961-0099

GREAT SOUTHERN BANK

12257 University Ave., Clive, IA 50325
greatsouthernbank.com
(515) 453-2265

Greater Des Moines Partnership

700 Locust St., Suite 100,
Des Moines, IA 50309
dsmpartnership.com
(515) 286-4950

GREENSTATE CREDIT UNION

12333 University Ave., Clive, IA 50325
greenstate.org
(515) 608-5960

H&R Block

1255 N.W. 128th St., Suite 200, Clive, IA 50325
hrblock.com
(515) 953-5243

HATCH DSM, LLC

218 1/2 Fifth St., West Des Moines, IA 50265
hatchdsm.com
(515) 224-1025

HealthSource of Clive

15920 Hickman Road, Suite 900,
Clive, IA 50325
healthsourcechiro.com/clive
(515) 987-9574

HEALTHY BIRTH DAY, INC.

1820 N.W. 118th St., Suite 220, Clive, IA 50325
healthybirthday.org
(515) 650-8685

Heartland Family Eyecare

1250 N.W. 128th St., Suite 150, Clive, IA 50325
heartlandfamilyeye.com
(515) 223-9595

HEARTLAND ROOFING, SIDING AND SOLAR

2519 N.W. 66th Ave., Des Moines, IA 50313
heartlandroofingandsiding.com
(515) 219-4847

HILTON GARDEN INN WEST DES MOINES

205 S. 64th St., West Des Moines, IA 50266
westdesmoines.stayhgi.com
(515) 223-0571

Horace Mann

1370 N.W. 114th St., Suite 130, Clive, IA 50325
agents.horacemann.com/!//h8C67wE5-
lu5WXoz6KV7VA2
(515) 276-4488

Horizon Events Center

2100 N.W. 100th St., Clive, IA 50325
horizoneventscenter.com
(641) 590-3640

HR Excellence Consulting

6750 Westown Parkway, Suite 200-145,
West Des Moines, IA 50266
hrexcellenceconsulting.com
(515) 227-7050

Hyatt Place West Des Moines/Jordan Creek
295 S. 64th St., West Des Moines, IA 50266
hyatt.com/hyatt-place/en-US/dsmzw-hyatt-
place-west-des-moines-jordan-creek
(515) 223-4001

ICAP
12951 University Ave., Suite 120,
Clive, IA 50325
icapiowa.com
(515) 421-5446

In the Bag Corporate Cuisine
79 University Ave., Des Moines, IA 50314
inthebag-lunches.com
(515) 222-9338

InnovativEvents, Inc.
1980 N.W. 94th St., Suite A, Clive, IA 50325
Innovativevents.com
(515) 208-4330

INTEGRATED ASSET MANAGEMENT-IAM
11428 Forest Ave., Clive, IA 50325
(515) 506-0663

IOWA DIAMOND
4601 Westown Parkway, Suite 215,
West Des Moines, IA 50266
iowadiamond.com
(515) 246-8070

IOWA DIGESTIVE DISEASE CENTER
1378 N.W. 124th St., Clive, IA 50325
iddc.net
(515) 228-6097

Iowa Family Massage
1349 N.W. 121st St., Suite 300, Clive, IA 50325
massagebook.com/therapists/
IowaFamilyMassageTherapy
(515) 491-8680

Iowa Living Magazines
8101 Birchwood Court, Suite D,
Johnston, IA 50131
iowalivingmagazines.com
(515) 953-4822 ext.319

Iowa Pork Producers Association
1636 N.W. 114th St., Clive, IA 50325
iowapork.org
(515) 225-7675

Iowa State Bank
2301 128th St., Urbandale, IA 50323
iowastatebanks.com
(515) 278-2442

IOWA TRUST
15591 Hickman Road, Clive, IA 50325
iowatrustbank.com
(515) 225-6229

Izumi Sushi & Hibachi, Inc
1301 N.W. 114th St., Clive, IA 50325
izumirestaurant.com
(515) 979-4666

JASON'S DELI
3910 University Ave., Suite 90,
West Des Moines, IA 50266
jasonsdeli.com
(515) 222-9797

Jersey Mike's Subs
12851 University Ave., Suite 200,
Clive, IA 50325
jerseymikes.com
(515) 224-1000

Precision watch & clock repair services

*Over 30 years of experience
from our master clockmaker
and timepiece specialists.*

W & W

Windsor Clock & Watch

2035 NW 100th Street, Clive
515-277-0277

windsorclockandwatch.com



PRO SERVICES



**Our experts.
Your business.**

- Commercial and residential flooring
- Electronics
- Appliances
- Window treatments
- Countertops



nfm.com
15500 Hickman Rd. Clive, IA
515-727-6500

©2006 Nebraska Furniture Mart, Inc.

MEMBERSHIP DIRECTORY — ALPHABETICAL

JKK Real Estate

4001 Westown Parkway,
West Des Moines, IA 50266
jess-sells.kw.com
(515) 505-2800

JOCELYN SEVERIN INSURANCE AGENCY

5435 N.W. 100th St., Suite 103,
Johnston, IA 50131
agents.farmers.com/ia/johnston/jocelyn-severin/
(515) 671-2711

Kelli Kerton State Farm Insurance

8818 Swanson Blvd., Clive, IA 50325
kertoninsurance.com
(515) 277-7227

KITCHEN REFRESH BY KNOPROS

2805 100th St., Urbandale, IA 50322
kitchenrefreshiowa.com
(515) 661-0800

KSH Design Studio, LLC

KSHDesignStudios.com
(515) 270-2554

KWIK STAR

15980 Hickman Road, Clive, IA 50325
kwiktrip.com

LA QUINTA INN & SUITES

1390 N.W. 118th St., Clive, IA 50325
wyndhamhotels.com/laquinta/clive-iowa/la-quinta-des-moines-west-clive/overview?CID=LC:6ysy27krtpcrqev:53107&iata=00093796
(515) 221-9200

Lane's Fast Lube, Inc.

9289 Swanson Boulevard, Clive, IA 50325
lanesautorepair.com
(515) 255-1797

LED Marquee Des Moines

1077 Belle Mar Drive,
West Des Moines, IA 50266
ledmarqueedsm.com
(515) 988-0674

LIFE 107.1

3737 Woodland Ave., Suite 600,
West Des Moines, IA 50266
life1071.com
(515) 327-1071

LIFESERVE BLOOD CENTER

5625 N.W. Johnston Drive, Johnston, IA 50131
lifeservebloodcenter.org
(800) 287-4903

LINCOLN SAVINGS BANK

13523 University Ave., Clive, IA 50325
myslb.com
(515) 222-0123

LIVING FAITH LUTHERAN CHURCH

2180 N.W. 142nd St, Clive, IA 50325
livingfaithclive.com
(515) 987-4030

Loretta Sieman

505 36th St., Unit 503, Des Moines, IA 50312
(515) 689-4451

Love's Travel Stops

11820 Hickman Road, Clive, IA 50325
loves.com
(515) 276-5200

LPT Realty - Legacy Realty of Iowa

12345 University Ave., Suite 100,
Clive, IA 50325
legacyrealtyiowa.com
(515) 669-0678

LUANA SAVINGS BANK

16390 Holcomb Court, Clive, IA 50325
luanasavingsbank.com
(515) 987-2116

Luxe Aesthetics

1349 N.W. 121st St., Suite 300, Clive, IA 50325
vagaro.com/luxeaesthetics5
(515) 401-4683

Machine Shed Restaurant

11151 Hickman Road, Urbandale, IA 50322
machineshed.com
(515) 270-6818

Many Hands Thrift Market

8801 University Ave., Suite D-10,
Clive, IA 50325
manyhandsthift.com
(515) 221-1174

Mary Anne Kennedy

(515) 975-0115

Marzetti Frozen Pasta

8714 Swanson Blvd., Clive, IA 50325
marzetti.com
(515) 309-5209

Massage Envy

12655 University Ave., Suite 180, Clive, IA 50325
locations.massageenvy.com/iowa/clive/12655-university-avenue.html
(515) 225-3689

McClure

1360 N.W. 121st St., Clive, IA 50325
mecresults.com
(515) 964-1229

Meadowview of Clive

3300 Berkshire Parkway, Clive, IA 50325
meadowviewseniorliving.com/meadowview-of-clive
(515) 644-8740

MERCYONE CLIVE REHABILITATION HOSPITAL

1401 Campus Drive, Clive, IA 50325
mercydesmoines.org
(515) 358-9461

MercyOne Comfort Health Center for Women

1601 N.W. 114th St., Suite 151, Clive, IA 50325
mercyone.org
(515) 222-7474

MercyOne Health and Fitness

12493 University Ave., Clive, IA 50325
mercyhealthfitness.com
(515) 226-9622

Merle Norman Cosmetics

2900 University Ave., Suite 120,
West Des Moines, IA 50266
merlenorman.com
(515) 226-8737

Metro Rental

10095 Hickman Court, Suite 6, Clive, IA 50325
rentaliowa.com
(800) 560-3408

Metro Waste Authority

300 E. Locust St., Des Moines, IA 50309
mwatoday.com
(515) 244-0021

MIDAMERICAN ENERGY COMPANY

3500 104th St., Urbandale, IA 50322
midamericanenergy.com
(515) 281-2595

MIDDENDORF INSURANCE ASSOCIATES

8400 Hickman Road, Clive, IA 50325
middendorfins.com
(515) 252-1414

Midwest Heritage Bank

1725 Jordan Creek Parkway,
West Des Moines, IA 50266
mhbank.com
(515) 224-9844

MIDWESTONE BANK

1245 Jordan Creek Parkway, Suite 140,
West Des Moines, IA 50266
midwestone.bank
(515) 440-6674

MIKE'S AUTO SERVICE

10500 Hickman Road, Suite A,
Clive, IA 50325
mikeautoservice.com
(515) 252-1400

MORGAN STANLEY

1080 Jordan Creek Parkway, Suite 400N,
West Des Moines, IA 50266
morganstanley.com/the-des-moines-group
(515) 283-7000

MOWTIVATED LAWCARE LLC

2775 N.W. 155th Court, Clive, IA 50325
(515) 975-4279

National Pork Board

1776 N.W. 114th St., Clive, IA 50325
pork.org
(515) 223-2600

NCMIC GROUP, INC./PROFESSIONAL SOLUTIONS

14001 University Ave., Clive, IA 50325
ncmicgroup.com
(515) 313-4500

Nebraska Furniture Mart

15500 Hickman Road, Clive, IA 50325
nfm.com
(515) 727-6500

Neu Blinds

3400 S.E. Miede Drive, Suite 3,
Grimes, IA 50111
(515) 250-5543

NEXT GENERATION REALTY

2011 100th St., Clive, IA 50325
nextgenerationrealty.com
(515) 224-9900

Nick's Bar and Grill

9769 University Ave., Clive, IA 50325
(515) 221-1338

NORTHWEST BANK

5700 University Ave.,
West Des Moines, IA 50266
nw.bank
(515) 327-5108

Nothing Bundt Cakes

1255 N.W. 128th St., Clive, IA 50325
nothingbundtcakes.com
(515) 223-2239

Oral Surgeons, PC

12345 University Ave., Suite 102,
Clive, IA 50325
oralsurgeonspc.com
(515) 416-4524

Orangetheory Fitness Clive

2171 NW 111th Street
Clive, IA 50325
orangetheory.com/en-us/locations/clive-
iowa-0347
(515) 207-3430

PEOPLES BANK

12701 University Ave., Clive, IA 50325
mypeoples.bank
(515) 457-8880

Pivot Construction, LLC

2131 N.W. 138th St., Clive, IA 50325
pivotconstructionia.com
(515) 635-1535

Policy Works LLC

7745 Office Plaza Drive N., Suite 170,
West Des Moines, IA 50266
PolicyWorkslowa.com
(515) 224-8957

POLK COUNTY BOARD OF SUPERVISORS

111 Court Ave., Room 300,
Des Moines, IA 50309
polkcountyiowa.gov
(515) 286-3301

PREMIER VISION CLINIC

12695 University Ave., Suite 170,
Clive, IA 50325
premiervisionclinic.com
(515) 512-1444

PRYSM JEWELRY & PIERCING

13101 University Ave., Suite 2,
Clive, IA 50325
prysmpiercing.com
(515) 868-4653

PURE LAND OF IOWA

8364 Hickman Road, Suite E, Clive, IA 50325
purelandofiowa.org
(515) 331-4144

RAPIDS REPRODUCTIONS, INC.

1980 N.W. 94th St., Suite G, Clive, IA 50325
rapidsrepro.com
(515) 251-3222

ReNew You Spa and Suites LLC

1349 N.W. 121st St., Suite 300,
Clive, IA 50325
dsmrenewyou.com

Rundahl Financial Consultants

8230 Hickman Road, Suite 300,
Clive, IA 50325
rundahlfinancialconsultants.com
(515) 355-3892

Rush Rolloffs

8805 Chambery Blvd., Suite 300,
Johnston, IA 50131
rushrolloffs.com
(515) 344-3437

SCHEMMER ASSOCIATES, INC.

1840 N.W. 118th St., Suite 110,
Clive, IA 50325
schemmer.com
(515) 957-7610

Schlievert Plumbing, Inc.

3181 99th St., Urbandale, IA 50322
schlievertplumbing.com
(515) 279-1513

Scott Cirksema

(515) 777-9293

SERVICEMASTER BY RICE

7555 University Ave., Clive, IA 50325
servicemasterbyrice.com
(515) 212-2511

Shahna Magee Agency - Farm Bureau Financial Services

470 West Hickman Road, Waukee, IA 50263
fbfs.com/find-an-agent/shahnamagee
(515) 987-5263

SHERATON WEST DES MOINES HOTEL

1800 50th St., West Des Moines, IA 50266
marriott.com/dsmsi
(515) 223-1800

Sherwood Forest Event Center

7400 Hickman Road,
Windsor Heights, IA 50324
sherwoodforesteventcenter.com
(515) 509-2332

SIGNATURE COMMERCIAL REAL ESTATE, INC.

4701 121st St., Urbandale, IA 50323
signatureRES.com
(515) 221-9990

MEMBERSHIP DIRECTORY — ALPHABETICAL

Simply Sophisticated Wealth Planning

15149 Buena Vista Drive, Clive, IA 50325
S2Wealth.com
(847) 917-0076

Snack & Go

15700 Hickman Road, Suite 110,
Clive, IA 50325
snackandgoia.com
(515) 987-8066

SPARE TIME ENTERTAINMENT

340 Jordan Creek Parkway,
West Des Moines, IA 50266
sparetimeentertainment.com/desmoines
(515) 414-2824

SpringHill Suites by Marriott

1236 Jordan Creek Parkway,
West Des Moines, IA 50266
marriott.com/hotels/travel/dsmsh-springhill-
suites-des-moines-west
(515) 223-9005

State Farm Insurance - Andrew Peschong

13435 University Ave., Suite 550,
Clive, IA 50325
peschongteam.com
(515) 226-9956

STEW HANSEN BUICK GMC

9060 Hickman Road, Clive, IA 50325
stewhansenbuickgmc.com
(515) 217-3600

STUFF ETC QUALITY CONSIGNMENT

8700 Hickman Road, Clive, IA 50325
shopstuffetc.com
(515) 251-8408

Stylin Paws Salon and Day Stay

120 N.E. Dartmoor Drive, Waukee, IA 50263
stylinpawssalon.com
(515) 518-5913

Subway

11054 Hickman Road, Clive, IA 50325
(515) 276-4196

Sullivan & Ward, P.C.

6601 Westown Parkway, Suite 200,
West Des Moines, IA 50266
sullivan-ward.com
(515) 244-3500

Sunflower Chef Catering

6151 Thornton Ave., Suite 100A,
Des Moines, IA 50003
sunflowerchefcatering.com
(515) 975-4707



TASTY TACOS, INC.

2249 N.W. 86th St., Clive, IA 50325
tastytacos.com
(515) 250-9911

Terry Snyder Photography

940 4th St., Waukee, IA 50263
terrystnyderphotography.photorelect.com
(515) 229-5308

THE BAKE SHOPPE

6611 University Ave., Suite 102,
Windsor Heights, IA 50324
thebakeshoppe.org
(515) 255-2253

The Bake Shoppe Waukee

420 Sixth St., Suite 120, Waukee, IA 50263
thebakeshoppe.org

The Dana Company

12345 University Ave., Suite 300, Clive, IA 50325
thedanaco.com
(515) 224-4391

The Iowa Clinic

5950 University Ave.,
West Des Moines, IA 50266
theiowaclic.com
(515) 875-9000

The McCoy @ 8035

11040 Hickman Road, Clive, IA 50325
themccoyat8035.com
(515) 225-0000

THE MONROE

1805 90th St., West Des Moines, IA 50266
themonroevenue.com
(515) 519-0336

The Other Place

12401 University Ave., Clive, IA 50325
theotherplace.com
(515) 225-9494

THE SALVATION ARMY CAPITAL AREA COORDINATION OFFICE

1400 N.W. 100th St., Clive, IA 50325
centralusa.salvationarmy.org/desmoines
(515) 282-3599

The Tavern Pizza

1755 50th St., West Des Moines, IA 50266
tavernpizza.com
(515) 223-6700

The Tavern Pizza Valley Junction

205 Fifth St., West Des Moines, IA 50265
tavernpizza.com
(515) 225-9827

The Vibe @ 8035

11428 Forest Ave., Clive, IA 50325
Thevibeat8035.com
(515) 650-5775

Triplett Office Solutions

3553 109th St., Urbandale, IA 50322
triplett.com
(515) 270-9150

Trust Bridge Wealth Advisors

4090 Westown Parkway, Suite 108,
West Des Moines, IA 50266
trustbridgewealthadvisors.com
(515) 207-4346

TWO MEN AND A TRUCK

2601 104th St., Suite 400,
Urbandale, IA 50322
twomen.com
(515) 276-7170

UMB BANK

13101 University Ave., Suite 3,
Clive, IA 50325
umb.com
(515) 381-7955



ARE YOU REALLY COVERED?

FAMILY-OWNED. INDEPENDENT.

We know our clients — and we make sure they're covered



MIDDENDORF

INSURANCE ASSOCIATES

8400 HICKMAN RD, CLIVE

(515)-252-1414

middendorfins.com



MEMBERSHIP DIRECTORY — ALPHABETICAL

Urban Green Apartments

7715 Hickman Road, Office #89,
Urbandale, IA 50322
urbangreen-apts.com
(515) 276-8175

VIBRANT MUSIC HALL

2938 Grand Prairie Parkway,
Waukee, IA 50263
vibrantmusichall.com
(515) 895-4980

Village at Grays Lake

2270 Bell Ave., Des Moines, IA 50321
thevillagedm.com
(515) 452-7484

VISION FINANCIAL SERVICES

1776 22nd St., Suite 101,
West Des Moines, IA 50266
yourvisioniowa.com
(515) 440-1133

VISIONBANK

12901 University Ave., Clive, IA 50325
visionbank.com
(515) 226-3302

vIVid Wellness + Aesthetics

1980 N.W. 94th St., Suite E/F, Clive, IA 50325
livin-vivid.com
(515) 415-1550

WAGGONER PEDIATRICS OF CENTRAL IOWA

2555 Berkshire Parkway, Suite A, Clive, IA 50325
waggonerpediatrics.org
(515) 987-0051

Wagoner Roofing and Construction

3161 99th St., Urbandale, IA 50322
wagonerroofingiowa.com
(515) 225-8147

WALNUT CREEK FAMILY YMCA

948 73rd St., West Des Moines, IA 50265
dmymca.org/locations/walnut-creek-family-ymca
(515) 224-1888

Walnut Ridge

1701 Campus Drive, Clive, IA 50325
preshomes.org/our-communities/walnut-ridge
(515) 457-1111

WALTER ROOFING

8450 Hickman Road, Suite 27,
Clive, IA 50325
walterbuilds.com
(515) 343-6955



Waukee Community Schools

560 S.E. University Ave., Waukee, IA 50263
waukeeschools.org
(515) 987-5161

Waukee-Clive Veterinary Clinic

15151 Hickman Road, Clive, IA 50325
waukee-clivevet.com
(515) 987-4552

WayPoint Resources

1155 S.E. Boone Drive, Waukee, IA 50263
waypoint.care
(515) 987-5523

WEBSPEC

5907 Meredith Drive, Urbandale, IA 50322
webspec.com
(515) 334-9544

WellForm MD

2675 N. Ankeny Blvd., Suite 113,
Ankeny, IA 50023
wellformmd.com
(515) 717-7648

West Des Moines Community Schools

3550 Mills Civic Parkway,
West Des Moines, IA 50265
wdmcs.org
(515) 633-5025

West Des Moines Marriott

1250 Jordan Creek Parkway,
West Des Moines, IA 50266
marriott.com/dsmwd
(515) 267-1500

Westside Auto Pros

1901 N.W. 92nd Court, Clive, IA 50325
westsideautopros.com
(515) 225-9090

Wildwood Lodge

11431 Forest Ave., Clive, IA 50325
thewildwoodlodge.com
(515) 222-9876

Windsor Clock & Watch

2035 N.W. 100th St., Suite F, Clive, IA 50325
windsorclockandwatch.com
(515) 277-0277

Woodlands Creek Senior Living

12675 Woodlands Parkway, Clive, IA 50325
woodlandscreek.com
(515) 223-9755

ZENITH DESIGN + BUILD

1492 N.W. 86th St., Clive, IA 50325
zenithdesignbuild.com
(515) 518-0237

ZOOM ROOM DOG TRAINING

13101 University Ave., Suite 4,
Clive, IA 50325
zoomroom.com/location/west-des-moines/
(515) 318-7780



YOUR LAWN. OUR PASSION.



\$500 OFF

LANDSCAPING PROJECT

Call for details.



**LET'S GET
YOUR PROJECT
STARTED TODAY.**

See our full list of services here!



Licensed & Insured

Family Owned & Operated

100% Satisfaction Guarantee



SNOW REMOVAL • HOLIDAY LIGHTS • LAWN MOWING • IRRIGATION
CHEMICAL APPLICATIONS • LEAF CLEANUPS • AND MORE!

WWW.CDSLAWNCARE.COM 515-468-5034 OFFICE@CDSLAWNCARE.COM



Making a Difference for
Innovators

Building a business takes all your attention, and the right bank helps you keep it there. You focus on serving your customers, while we take care of the financial side. Call us to see how we can support your small business.

Chris Beener
VP, Clive Branch Manager

BANKING | LENDING | WEALTH MANAGEMENT

(515) 222-2000 | BankersTrust.com

