

OFFICIAL 2025 COMMUNITY AND VISITOR GUIDE



DISCOVER

MADISON COUNTY

IOWA



PSRST STD
ECRWSS EDM
U.S. POSTAGE
PAID
BIG GREEN
UMBRELLA MEDIA
RESIDENTIAL CUSTOMER
BIG GREEN
UMBRELLA MEDIA
8101 Birchwood Ct. Ste. D
Johnston, Iowa 50131



Dream It. Build It. Sell It.
Your Partner in Real Estate & Construction

Kyle Kuhns

kyle@centralsdmhomes.com
(515) 238-9678

140 Jordan Creek Pkwy #160
West Des Moines, IA 50266



REAL ESTATE AGENT, LICENSED IN THE STATE OF IOWA

CUSTOM HOME BUILDER

NEW CONSTRUCTION | REMODELS
AMISH BUILT POLE BARN
BARNDOMINIUMS

RE/MAX
REVOLUTION



Independent Living

— AT AZRIA HEALTH! —



AZRIA HEALTH
WINTERSET

Azria Health Winterset
provides excellence at every
level, delivering exceptional
service to each individual –
from our inviting welcome
program to our individualized
care plans – we are with you
every step of the way.



Schedule a tour today!

Contact Us at 515-462-1711

email: wintersetinfo@azriahealth.com

www.azriahealth.com

SPACIOUS & AFFORDABLE LIVING

- Weekly Light Housekeeping
- Meal Service • Laundry Available On-site



1015 W. SUMMIT STREET,
WINTERSET

Inquire for open positions
FT and PT are available!



A comprehensive resource designed for you!

Welcome to "Discover Madison County." This annual guide for Madison County residents is created by the publishers of Winterset Living magazine and paid for by the local businesses that advertise their goods and services in these pages. It is designed for easy readability and offers quick answers to common questions. Keep this community resource handy all year long; you'll be glad you did.

In the pages that follow, you will find answers to day-to-day questions that come up in the community, but this is more than a standard directory. "Discover Madison County" offers information about your city council and school board representatives, a listing of area churches, and information about local events planned for the upcoming year.

Be sure to patronize the local businesses and advertisers that helped make this effort

possible. They know you have many options on how to spend your hard-earned dollars, and your loyalty is appreciated. We are a small business, too, and we value the long-standing relationships we have built.

If you would like additional copies, contact our distribution manager, Mike Chiston, at 515-953-4822 ext. 304 or email mike@dmcityview.com.

Of course, things change a lot within a year, so be sure to contact the individual groups listed here for updates. If you notice any errors, omissions, or if you have advice on something new you'd like to see, please contact publisher Shane Goodman at 515-953-4822 ext. 305 or shane@dmcityview.com.

And don't forget to keep this guide where you can easily find it and refer to it often. Madison County has a lot to offer, so get out and enjoy it! ♦

PUBLISHED BY:



Publisher Shane Goodman
Vice President..... Jolene Goodman
Advertising Sales..... Kristine McDonald
Creative Director..... Celeste Tilton
Graphic Designer..... Jayde Vogeler
Graphic Designer..... Nick Ruiz
Digital Manager Beckham Miller
Business Office Manager Brent Antisdell
Distribution Manager Mike Chiston

Report errors and omissions to Shane Goodman at 515-953-4822 ext. 305 or shane@dmcityview.com. Photos contributed by Teddi Yaeger, Madison County Conservation, Winterset Parks & Rec and BGUM staff. A copy of this publication is mailed to every address in Winterset, Earlham and St. Charles. For information about the 2026 Discover Madison County Guide, contact Jolene Goodman, 515-953-4822, ext. 319 or email jolene@iowalivingmagazines.com. Contents © 2025 Big Green Umbrella Media, Inc. All rights reserved. Nothing may be reprinted in whole or in part without permission of the publisher.

FLOORS DIRECT

SAY YES TO PAYING LESS

YOUR LOCAL SOURCE FOR **AFFORDABLE**
IN-STOCK CARPET, TILE, VINYL, HARDWOOD,
LAMINATE AND PROFESSIONAL INSTALLATION
AVAILABLE!

PRICES STARTING AT \$1.99/SF

2239 NW 108th St, Clive, IA 50325

CALL TODAY! (515) 270 3885



Scan to view our website!



FlooringAmerica.
where friends send friends™

THE RIGHT WAY
TO SHOP

Welcome to your **locally owned** and
operated flooring store, **organized by color**
and **designed for an easier way to shop.**

📍 **Clive, IA**
10200 Hickman Ct.
Suite #300
515-331-4613

📍 **Ankeny, IA**
1205 SE 16th Ct.
Suite #4
515-963-9401



Scan to view our website!



SCAN ME

LUXURY VINYL
TILE
LAMINATE
HARDWOOD
CARPET
LUXURY VINYL





INSIDE

Government	6
Frequently Asked Questions	9
Health Care	11
Communities of Madison County	12
Madison Co. Development	18
Chamber of Commerce.....	18
Schools	19
Maps.....	24
Churches.....	26
Underground Railroad.....	29
Parks	32
Covered Bridges	36
Events.....	38
Attractions	40

One Agent for **Life** and **Auto** and **Home** and **Farm & Ranch** and **Business**

Let's review your existing coverage and your plans for the future. We'll work together to develop a customized plan that's right for you.

Contact me today.



Ryan Rasmussen

115 W Court
Winterset, IA
Office | 515.462.4448
Mobile | 641.745.9699
agentryanrasmussen.com

FARM BUREAU
FINANCIAL SERVICES

Registered Representative/Securities & services offered through FBL Marketing Services, LLC, 5400 University Ave., West Des Moines, IA 50266, 677/860-2904, Member SIPC, Farm Bureau Property & Casualty Insurance Company, * Western Agricultural Insurance Company, * Farm Bureau Life Insurance Company, * West Des Moines, IA, * Affiliates. *Company providers of Farm Bureau Financial Services. PB-GB-A (5-24)

RESIDENTIAL & COMMERCIAL **TREE SERVICES**

Offering a variety of professional services to ensure the health of your trees.

- ✓ Tree Pruning
- ✓ Stump Grinding
- ✓ And More!
- ✓ Planting
- ✓ Removals



**KEEP UP-TO-
DATE WITH US
ON FACEBOOK!**



Anderson
Tree Care

Serving Madison County and the surrounding areas!

CALL FOR A QUOTE! 720-475-0915

Get acquainted with Madison County government and services

The communities of Madison County

- BEVINGTON
- EARLHAM
- EAST PERU
- MACKSBURG
- PATTERSON
- ST. CHARLES
- TRURO
- WINTERSET

Madison County was established on Jan. 13, 1846 and has been self-governed since 1849. It was named after James Madison, the fourth president of the United States. Its county seat is Winterset, and it is one of the five counties that make up the Des Moines-West Des Moines Metropolitan Statistical Area.

Madison County is famous for being the county where John Wayne was born and for its covered bridges. These bridges were featured in the book and movie, "The Bridges of Madison County."

COUNTY OFFICES

Hours: Monday - Friday, 8 a.m. to 4:30 p.m.

County Board of Supervisors meetings are every second and fourth Tuesday of the month, 10 a.m. at the Madison County Annex, 201 W. Court Ave.

Madison Ambulance..... 515-462-2253
209 Wambold Drive, Winterset

Assessor..... 515-462-4303
201 W. Court, P.O. Box 152, Winterset

Attorney..... 515-462-5034
112 N. John Wayne Drive, P.O. Box 152, Winterset

Auditor..... 515-462-3914
112 N. John Wayne Drive, P.O. Box 152, Winterset

Board of Supervisors..... 515-462-3225
112 N. John Wayne Drive, Winterset

Clerk of Court..... 515-462-4451
112 N. John Wayne Drive, Winterset

Community Services..... 515-493-1453
112 N. John Wayne Drive, P.O. Box 152, Winterset

Conservation..... 515-462-3536
112 N. John Wayne Drive, P.O. Box 129, Winterset

Celebrating
75 years
of healthcare you can trust.

(515) 462-2373

300 W. Hutchings St. | Winterset, IA 50273



An Affiliate of
MERCYONE.



madisonhealth.com

OUR SERVICES

Family Medicine Clinics

- Men's & Women's Health
- Family Planning
- Pediatrics
- Health Coaching

Chemotherapy & Infusions

Emergency Room

Health & Rehab Services

- Physical Therapy
- Occupational Therapy
 - Pelvic Floor Therapy
 - Lymphedema Therapy
- Speech Therapy
 - Pediatric & Adult
 - Swallow Studies
- Cardiac Rehabilitation
 - Stress Tests
 - Holter & Event Monitors
- Pulmonary Rehabilitation
 - Pulmonary Function Testing
- Diabetes Education

Nursing Services

- Inpatient Care
- Skilled Care

Radiology

- Bone Density Testing
- CT Scans
- 3D Digital Mammography
- MRI
- Nuclear Medicine
- Ultrasound
- X-Ray

Senior Life Solutions

Specialty Services

- Cardiology
- Dermatology
- Foot & Nail Care
- General Surgery
- Oncology
- Orthopaedics
- Pain Management
- Podiatry
- Psychiatry
- Pulmonology
- Rheumatology
- Urology
- Wound Care

Surgical Procedures

COUNTY OFFICES

Emergency Management	515-462-4255
112 N. John Wayne Drive, Winterset	
Engineer	515-462-1136
1105 E. Court Ave., Winterset	
Environmental Health Office	515-462-2636
201 Court Ave., Winterset, IA 50273	
Human Resources	515-462-5026
112 N. John Wayne Drive, P.O. Box 152, Winterset	
Public Health	515-462-9051
209 E. Madison St., Winterset	
Recorder	515-462-3771
201 W. Court, P.O. Box 152, Winterset	
Sheriff	515-462-3575
1012 N. John Wayne Drive, P.O. Box 517, Winterset	
Treasurer	515-462-1542
201 W. Court, P.O. Box 152, Winterset	
Veterans Affairs	515-462-4680
112 N. John Wayne Drive, Winterset	
Weed Commissioner	515-462-2636
112 N. John Wayne Drive, P.O. Box 152, Winterset	
Zoning	515-462-2636
201 W. Court, P.O. Box 152, Winterset	



Madison County Courthouse in Winterset



CONFERENCE & RETREAT CENTER

Wildwood Hills Ranch features exceptional and versatile conference and retreat facilities designed to meet the diverse needs of businesses, churches, sports camps, and more. We specialize in highly sought-after team-building and leadership development training that is customized to fit a group's objectives. Once meetings conclude, unwind in our fully-furnished, rustic yet elegant cabins and indulge in exquisite cuisine thoughtfully curated for the group.

100% of profits from conference & retreat center groups go directly toward supporting scholarships for the vulnerable youth we serve!

BOOK TODAY
 WILDWOOD HILLS RANCH
 2552 UNION LANE
 ST. CHARLES, IA 50240
 641.396.2414
WWW.WILDWOODHILLSRANCH.ORG





Country Cutters

- Tanning
- Lash Lift and Tint
- Hair Cuts
- Customized Color
- Total Family Haircare



116 W. JEFFERSON, WINTERSET • 515-462-1321

COMPLETE FAMILY HAIR CARE

ASHLEY (OWNER) • MICHELLE • JEN

GOVERNMENT

COMMUNITY SERVICES

• GENERAL ASSISTANCE

MATURA Outreach Center, 1724 N. John Wayne Drive, Winterset, IA 50273

Sara Reed, general assistance coordinator,
madisonoutreach@maturaia.org, 515-462-4704

Monday through Friday, 8 a.m. to 4:30 p.m.

Madison County General Assistance serves Madison County residents who meet county eligibility guidelines. Services include: rental assistance; utility assistance; medical, dental and prescription assistance; transportation (employment purposes only); and funeral assistance (cremation only) if funds are available. Restrictions also apply.

• CENTRAL IOWA COMMUNITY SERVICES MADISON COUNTY OFFICE

By appointment only, 641-640-2418

CICS supports individuals and strengthens communities by serving the unique needs of individuals with mental health, intellectual and other developmental disabilities in 15 Iowa counties, including Madison County.

CICS is focused on providing the vital link between individuals and appropriate resources in the region/community to improve health, hope and successful outcomes. CICS service coordinators help individuals navigate through the process of applying for and securing the necessary financial support for their immediate needs. For more information, visit www.cicsmhds.org.

VETERAN AFFAIRS

209 E. Madison St., Winterset, IA 50273

Monday, Tuesday, Thursday and Friday, 9 a.m. to 3 p.m. or by appointment. Call for an appointment: 515-462-4680

Executive Director: Thaddeus Smith,
tsmith@madisoncounty.iowa.gov

Eligible veterans with financial hardships may apply for temporary emergency assistance. Assistance is offered in applying for other benefits and obtaining information for the veteran such as: VA medical care, compensation and pension, Iowa Veterans Home, military records, grave markers and home loan benefits.

A grave registration is maintained for veterans who served in the U.S. Armed Forces whose mortal remains rest in Madison County.

The Madison County Veteran Affairs Commission meets the first Monday of every month at 8 a.m. in the Veteran Affairs Office, third floor of the Courthouse. If the first Monday falls on a holiday, the Commission meets on the following Tuesday.



Monumental Park in Winterset

PUBLIC HEALTH

209 E. Madison St., Winterset, IA 50273

Monday - Friday, 8 a.m. to 4:30 p.m. • 515-462-9051

Public Health Administrator: Susan Crowdes
sjcrowdes@madisoncounty.iowa.gov

The Madison County Board of Health meets at 7 p.m. the first Wednesday of the odd months in the lower level of the Madison County Annex, located at 201 W. Court Ave.

• **Homemaking Services:** These services are being discontinued, effective June 13, 2025.

• **Blood Pressure Clinics:** Blood pressure and vital sign screenings are offered in the Public Health office by appointment only. Call 515-462-9051 to schedule.

• **Immunizations:** Immunizations are available for infants, children, adolescents and adults. Call 515-462-9051 to schedule an appointment. They accept private pay and some insurance plans. As a provider for the VFC (Vaccines for Children) Program, they offer vaccines at no cost for those who qualify. For more eligibility and other information, visit madisoncounty.iowa.gov/offices/public-health.

HIRTA PUBLIC TRANSIT

Hours: 7 a.m. to 5 p.m.

For information or scheduling a ride:

877-686-0029, erides@ridehirta.com.

Providing public transit service to the central Iowa counties of Boone, Dallas, Jasper, Madison, Marion, Story and Warren. HIRTA is open to anyone for any reason. HIRTA is committed to ensuring no person is excluded from participation in, or denied the benefits of, its transit services on the basis of race, age, disability, religion, color, sex or national origin, as protected by Title VI of the 1964 Civil Rights Act. Services are open to the general public, including persons with disabilities, as required by the Americans with Disability Act. ♦

Where do I vote?

To find your voting precinct and polling location, visit sos.iowa.gov/elections/voterreg/pollingplace/search.aspx.

Are there property tax exemptions?

Property owners can apply for a variety of tax exemptions. The list and forms are available at madisoncounty.iowa.gov/offices/assessor. Exemptions are offered for: barn preservation; certain nonprofit and charitable organizations; geothermal heating and cooling systems; historic property rehabilitation; industrial property; manufactured home storm shelter; environmental efforts involving native prairie wetlands, forest or fruit tree preservation and more; wildlife tax exemption; and several others.

How do I obtain a fishing or hunting license?

The Recorder's office sells fishing, hunting, fur harvester, deer and wild turkey licenses. Habitat, migratory bird and trout fees may be paid as well. For additional hunting information, visit the Iowa Department of Natural Resources at iowadnr.gov.

Does a snowmobile need to be registered?

Yes, as do other off-the-road vehicles as well as boats. The Madison County Recorder has the responsibility of registering and titling boats, ATVs, ORVs, ORM's and snowmobiles of Madison County residents. Boat registrations expire on April 30 every three years. Boat fees are based on the length of the boat. All boats 17 feet and longer require a title (except canoes and kayaks). The registrations for land vehicles expire on Dec. 31 of each year. Titles are required on all ATVs registered since January 2000 and on all snowmobiles registered since January 1998.



The Truro Community Center is one polling location. Check to verify your polling center.

How do I apply for a marriage license?

You may apply for a marriage license at any County Recorder's office in Iowa as long as the ceremony is performed in Iowa. Applications are accepted in Madison County during courthouse business hours. Both parties and one witness (18 years or older) must appear in person and present photo identification (driver's license or government-issued ID). The \$35 fee includes a certified copy of the marriage certificate. More information is available at <https://madisoncounty.iowa.gov/offices/recorder/>.

Where do I go for my driver's license?

The Driver's License Office at the Madison County Courthouse is open 8 a.m. to 4 p.m. by appointment only. To schedule an appointment, visit madisoncounty.iowa.gov and click on the link offered. ♦

McDonald's Lawn and Tree Care

515-462-6953



Tree Removal/Trimming
Stump Grinding
Firewood
Snow Removal
Lawn Mowing

Free Estimates Fully Insured



CALDWELL PARRISH
FUNERAL HOME & CREMATORY

1823 N. John Wayne Drive, Winterset • 515-462-4080 • CaldwellParrish.com

Learn how the Board of Supervisors serves Madison County

There are three members on the Board of Supervisors, each elected by citizens in the county. Individuals serve overlapping four-year terms, with elections held every two years. The Board elects one of its members annually to chair its activities.

The board meets every second and fourth Tuesday at 9:30 a.m. at the Madison County Annex lower-level conference room, 201 W. Court Ave., Winterset. Meetings are open to the public. To be placed on the Board's agenda, contact the Board Office by the Thursday preceding the meeting.

The Board of Supervisors has both legislative and administrative powers and is the policy-making body for Madison County government. With its authority to adopt legislation and policies for department operations, the Board sets priorities, allocates resources and maintains budgetary control.

The budget process is the most important power of the Board. By using the budget process effectively, the Board is able to monitor and correct inefficiencies in all organizational units, including elected departments, quasi-government organizations and administrative departments.

In addition to these responsibilities, the Board of Supervisors promotes and facilitates various cooperative efforts among and between other government entities and jurisdictions. Most importantly, the Board is available to its constituency and can respond to issues of importance to citizens. The Supervisors also appoint individuals or serve on a number of boards and commissions that affect all aspects of Madison County operations.

Board Clerk: Michele Brant, 515-462-3225



SUPERVISORS

Heather Stancil

515-493-1278 or 515-412-0090

Board Chair, Supervisor District 1

Term ends Jan. 1, 2027

Serving on the following boards:

- Assessor's Conference Board
- Central Iowa Community Services MHDS Region
- County Covered Bridge Preservation Board
- County Safety Committee
- Metropolitan Planning Organization
- Iowa Heartland RC&D
- Madison County Multi-Purpose Center Advisory Board
- MATURA Action Agency Board
- Iowa Workforce Development

Diane Fitch

515-705-0377

Supervisor District 3

Term ends Jan. 1, 2027

Serving on the following boards:

- Aging Resources of Iowa
- Assessor's Conference Board
- 5th Judicial District Board
- Greater Madison County Community Foundation
- Heart of Iowa Regional Transit Agency
- Opioid Task Force
- North and Middle Rivers Watershed Management Authority
- Southern Iowa Council of Governments
- South Central Iowa Landfill Agency

Jessica Hobbs

515-705-0378

Supervisor District 2

Term ends Jan. 1, 2029

Serving on the following boards:

- Assessor's Conference Board
- Decategorization Governance Board
- County Courthouse Security Committee
- County Local Emergency Planning Committee
- County Resource Enhancement & Protection
- County Safety Committee
- Emergency Management Commission ♦

Being adjacent to Des Moines brings world-class health care to the residents of Madison County. Several major hospitals, as well as one of the largest medical colleges in the United States (Des Moines University), can be found a short drive away. Often, though, there's no need to travel, as excellent health care can be found in Madison County.

Madison County Health Care System, an affiliate of MercyOne, consists of Madison County Memorial Hospital, the Earlham Medical Clinic and the Health Trust Physicians Clinic in Winterset.

The hospital offers in-house comprehensive orthopaedic care, general surgery, rehabilitation therapy, foot and ankle care and chronic disease management. Also serving patients locally are additional visiting specialists representing the fields of cardiology; dermatology; ears, nose and throat; oncology; pain management; podiatry; rheumatology; and urology.

The community as a whole values healthy living, and many activities and wellness programs are available to the public. A fully staffed and active parks and recreation department is found in Winterset, and other communities in the county also offer recreational opportunities. These programs offer a variety of youth and adult programs.

An active Madison County Conservation Commission with full-time staff schedules varied activities throughout the year for all ages to share the beautiful parks and resources found in Madison County. There are also several walking, running and biking events held annually in Madison County. A community dog park is located in Winterset, and family pets can get in on the fun, too.

Whether you call Madison County home or are simply passing through, there is a rich variety of resources ready to meet your health care and wellness needs. ♦



Madison County Memorial Hospital

CONTACTS

Emergency: 911

Madison County Memorial Hospital

300 W. Hutchings St., Winterset • 515-462-2373

Open 24/7 • Business office hours: Monday through Friday, 8 a.m. to 4 p.m.

Health Trust Physicians Clinic

300 W. Hutchings St., Winterset • 515-462-2950

Hours: Monday through Thursday, 7:30 a.m. to 6 p.m.
Friday, 7:30 a.m. to 5 p.m., Saturday, 8:30 a.m. to noon

Earlham Medical Clinic

125 W. First St., Earlham • 515-758-2907

Hours: Monday, Wednesday, Thursday and Friday, 7:30 a.m. to 4:30 p.m. Closed Tuesday.



LOCALLY GROWN FOR YOU!



Groth's Gardens

OPEN APRIL 18–LATE MAY

Annuals, Hanging Baskets, Patio Planters, Ferns

2451 Cumming Road, Winterset
515-462-4445 • www.grothsgreenhouses.com
Monday-Saturday 10am-5pm • Sunday 12pm-4pm • Closed Easter

JOIN OUR MAILING LIST!

Sign up at www.the-iowa.com/connect to get The Iowa's schedule delivered weekly to your inbox.

WE DO NOT SPAM, AND DO NOT SHARE ADDRESSES.

www.the-iowa.com | 121 N John Wayne Dr. | Winterset



COMMUNITIES OF MADISON COUNTY

Earlham

WWW.EARLHAMIOWA.ORG

Located just south of I-80 on the northern edge of Madison County, Earlham's greatest claim to fame may be Marion Michael Morrison, a.k.a. John Wayne, who lived in Earlham as a boy in the early 1900s. He attended school in the Earlham Academy Building that is now owned by the Earlham Historical Society, and his father, Clyde, owned a pharmacy in Earlham until poor health forced the family to move west.

Today, Earlham is a thriving small town with all the benefits of a peaceful, rural landscape near one of the country's most desirable cities. Businesses in Earlham provide all the important conveniences of dining, banking, grocery shopping, health care and more, including an excellent school system. The completion of the Bricker-Price Block project, the rehabilitation of a historic two-building complex in the town center, gained national attention and brought even more amenities to the community.



Earlham Community Center

EARLHAM CITY PARKS

- **City Park:** Earlham's City Park is located in the center of the city between N.E. Sycamore, N.E. Maple, E. Third and E. Second. The park features poles for volleyball nets, horseshoe pits, stage, playground, shelter house, picnic tables, tennis courts, basketball court, drinking fountains for people and dogs, and restrooms open during the season.
- **Recreation Park:** Located north of E. Sixth Street, the Recreation Park features a softball field, baseball field, three Little League fields, three soccer fields and a newly renovated swimming pool.
- **Gendler Park:** This park features walking paths, two ponds, a dock, a picnic shelter with a grill and a dog park.
- **Swimming Pool:** 515-758-2700. Hours when open for season: Monday through Thursday, 1-8 p.m.; Friday through Sunday, 1-5 p.m. earlhamiowa.org/pool

EARLHAM CITY GOVERNMENT

City Hall..... 515-758-2281
140 S. Chestnut Ave., P.O. Box 518
Hours: Monday - Friday, 7 a.m. to 3:30 p.m.
Closed on holidays
earlhamcityhall@mchsi.com or earlhamutilities@outlook.com
Earlham Public Library..... 515-758-2121
120 S. Chestnut Ave. • library@earlham.lib.ia.us

COUNCIL

Jeff Lillie, Mayor Term ends 12-31-25
jlilliej@hotmail.com
Brock Fredericksen, Councilmember..... Term ends 12-31-27
brockf1@yahoo.com
Deeanna Mudge, Councilmember..... Term ends 12-31-25
deeannamudge@gmail.com
Joel Visser, Councilmember Term ends 12-31-27
Visserconstruction@outlook.com
Tim Nelsen, Councilmember Term ends 12-13-25
timjnelsen@gmail.com
David Miller, Councilmember Term ends 12-31-25
davidmilleremail27@gmail.com

CITY STAFF

Shelley Kaster, City Clerk/Treasurer 515-758-2281
earlhamcityhall@mchsi.com
Kristy Amsden, Deputy Clerk..... 515-758-2281
earlhamutilities@outlook.com
Gary Coffman, Public Works Supervisor 515-758-2281
gcoffmancityofearlham@gmail.com
Matt Stringham, Police Chief..... 515-758-2281
6131@earlhampd.org
Adam Gordon, Zoning Administrator..... 515-758-2281
Justina Meek, Library Director 515-758-2121
earlhampubliclibrary@gmail.com

24/7 EMERGENCY SERVICE

- Fire and Smoke Damage Restoration
- Water Damage Restoration
- Mold Remediation
- Board-Up and Tarp-Over Services
- Contents Cleaning and Storage



RAINBOW RESTORATION
a neighborly company

515-462-4350

1621 John Wayne Drive, Winterset
RainbowOfSCI.com

We mean to please, no matter
the occasion!

- Weddings • Anniversary • Birthdays • Holidays • Get Well
- Sympathy • School Dances • Fresh Flowers
- Silk Arrangements • Plants • Gifts & Home Decor

Bellflower
FLORIST & GIFTS LLC

Shop the perfect gift today.



bellflowerfloristandgifts.com | 515-410-2397 | 2251 Sunset Dr Suite C, Norwalk Veteran Owned



COMMUNITIES OF MADISON COUNTY

East Peru EASTPERUIA.ORG

East Peru, located in southeast Madison County, is the "Home of the Original Delicious Apple," discovered there by farmer Jesse Hiatt.

The East Peru City Council typically meets the first Monday of each month at 7 p.m. at the community building. The Council meeting minutes are posted in the Peru Bar & Grill, the outdoor community bulletin board, and the website under "City Government." Check the previous month's minutes for any schedule changes.



East Peru Community Center, 120 Brown St.

STAFF AND COUNCIL MEMBERS

City Clerk **Emily Kimzey** 641-728-4858

cityofeastperu@outlook.com

Mayor **Rick Kimmel**

Mayor Pro-Tem **Shari Porter**

Councilmember **Danielle Rinard**

Councilmember **Josh Rogers**

Councilmember **Todd Porter**

Councilmember **Chance Goodridge**

Truro TRUROIOWA.ORG

Truro is defined less by boundaries on a map than by the sense of shared values its residents hold dear. The community takes pride in maintaining a wholesome lifestyle, rich in cultural history, along with a deep commitment to the preservation of the environment and a progressive approach to local business.



City Hall, 120 E. Center St., Truro, IA 50257 641-765-4586

Truro Library, 114 E. Center St., Truro, IA 50257 641-765-4220

Becki Morris, City Clerk, trurocityclerk@gmail.com 641-765-4586

MAYOR AND CITY COUNCIL

Bryan Arzani, Mayor Term ends Dec. 31, 2025

Jason Phillips Term ends Dec. 31, 2027

Matt Masters Term ends Dec. 31, 2025

Julie McMichael Term ends Dec. 31, 2027

Ancel Kennedy Term ends Dec. 31, 2027

Lyndsay Cannoy Term ends Dec. 31, 2025



CENTRAL IOWA'S PREMIER ROOFING COMPANY

ROOFING • SIDING • DECKS • ADDITIONS • REMODELS • & MORE



CALL OUR TEAM TODAY!
(515) 689-3700!

Locally Owned & Operated



Macksburg

WWW.FACEBOOK.COM/MACKSBURGIOWA

This small metropolis of about 100 residents is located in the southwest corner of Madison County and was incorporated in 1876. It was named for Doctor J.H. Mack, who donated the land for the town. The J.D. Craven Women's Relief Corps No. 322 Auxiliary was organized in 1898. The WRC Hall is on the National Historical Register. The building was sold in 2003 to a resident of the town.

Macksburg was the home of the designer of the Martin B-10 Bomber used in WWI, Glenn Martin, who was born in 1886 in Macksburg.

MACKSBURG CITY GOVERNMENT

City Hall, 106 W. North St., P.O. Box 144, Macksburg, IA 50155
macksburgiowa@gmail.com

Kevin Jackson, Mayor 641-768-2291

Tricia Gardner, Clerk/Treasurer..... 402-432-2432

COUNCIL MEMBERS

Carolyn DeBord 515-249-6720

Rhonda Dean 641-247-1285

Charlie DeBord 641-202-4721

Jimi Davis..... 515-468-1523

City council meetings are held at City Hall on the first Monday of every month at 6 p.m. Meetings are open to the public.



Macksburg belltower

Madison County Realty

SERVING MADISON COUNTY
AND ALL OF CENTRAL IOWA

Residential



Acreages



New Construction



RESIDENTIAL • TOWNHOMES • ACREAGES
NEW CONSTRUCTION • FARMS • COMMERCIAL



Jennifer Stover
515-480-3389



Alyssa Tadlock
515-313 1443



Randy Henry
515-360-8739



Peter Corkrean
515-988-9613



Patrick Corkrean
515-468-1233

65 West Jefferson | Winterset, IA 50273 | 515-462-3120
www.madisoncountyrealty.com



COMMUNITIES OF MADISON COUNTY

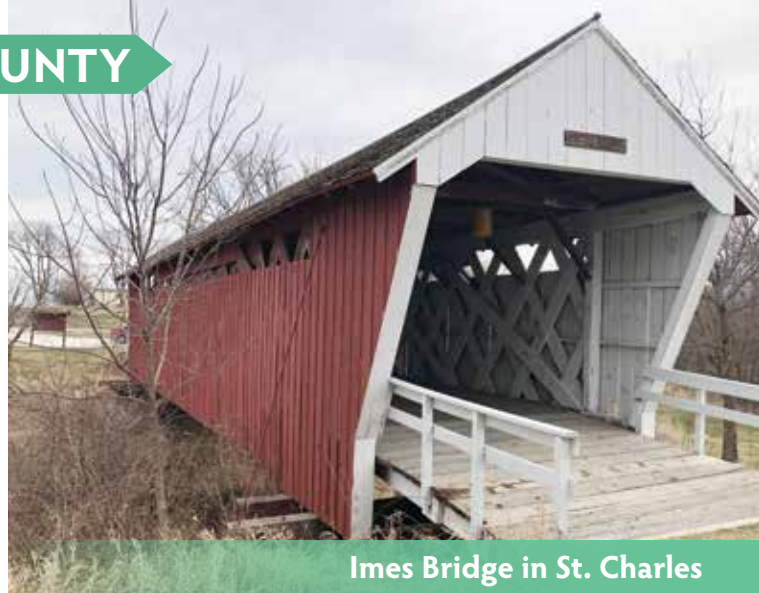
St. Charles STCHARLESIA.US

St. Charles is known locally as the Gateway to the Bridges. Because of this association, the city proudly offers The Gateway as an asset available to the community and visitors to the area. It is a historical landmark built in 1916 that welcomes you to St. Charles as you pass by the Imes Covered Bridge and enter St. Charles from the east. The Gateway has a two-fold purpose. It is available as an event venue and the Welcome Center during the summer.

The Gateway Event Venue is available for rental year-round. There is a full kitchen and restroom available for public use. Seating accommodates up to 100 people on the main level and 75-80 in the basement, depending on the layout. Chairs and tables are available onsite. The beautiful historic stained-glass windows, small stage and wooden floor make it a unique and beautiful option for all types of events. For information on rental prices and available dates, contact: gatewaystcharles@gmail.com or call City Hall at 641-369-2545.

The Welcome Center is operated in collaboration with the city of St. Charles and the Madison County Chamber of Commerce. It is full of information about St. Charles and surrounding areas as well as Winterset and the remainder of Madison County. The friendly staff is available to welcome guests and make this information available to enjoy. There are also souvenir options and treasures made by local artisans. If you are coming for the first time, or have not been here in a while, stop there first. It is a great place to relax and rejuvenate. The Welcome Center is open May 1 to Oct. 31 on Thursdays, Fridays, Saturdays and Sundays from 11 a.m. to 3 p.m.

St. Charles also features the Avenue of the Saints Amphitheater



Imes Bridge in St. Charles

and Event Center. An outdoor event space with a maximum capacity of 18,000, the Center hosts music festivals and other events. This includes the annual three-day Hinterland Music Festival the first full weekend of August.

ST. CHARLES PARKS

St. Charles has three park areas: Imes Covered Bridge Park on the eastern entrance; Old Settlers Park, located across the alley from St. Charles Lions Building; and City Park north of Main Street off Clark Street.



City Park

City Park features playground equipment for younger kids, restrooms, and Soaring Eagle Disc Golf Course, a project of Eagle Scout Jordan Hartfield and a crew of helpers. The park also features a basketball court, volleyball net and pickleball court.

ST. CHARLES CITY GOVERNMENT

The city is governed by a city council that includes the mayor and five council members. The term for mayor is two years with the council members having four-year terms that rotate to ensure continuity. The council meets at least one time per month with other special meetings taking place as needed. The normal council meetings take place on the second Monday of the month at 6:30 p.m. at City Hall.

The mayor and five council members are elected at large on a non-partisan basis. Regular city elections are held the first Tuesday after the first Monday in November during every odd-numbered year.

City Hall, 113 S. Lumber St..... 641-396-2545
Tuesday, Wednesday and Thursday: 9:30 a.m. to 3:30 p.m.

City Clerk: Tracy Kozak..... clerk@stcharlesia.us

Public Library, 113 S. Lumber St..... 641-396-2945
Hours: Sunday, 1-5 p.m.; Monday, 10 a.m. to 6 p.m.; Tuesday and Thursday, noon to 8 p.m.; Saturday, 9 a.m. to noon

City Council

Dennis Smith, Mayor dsmithmayor@gmail.com

Whitney Hutton, Council stcharlescouncil@gmail.com

Thomas Blomme, Council hollywood.thomas@hotmail.com

Megan Allison, Council, Mayor Pro-Tem mallison442@netins.net

Dan Kozak, Council..... dan.kozak.st.charles@gmail.com

Travis Brockett, Council travisb.stcharles@gmail.com

Winterset WINTERSET.GOV

WINTERSET CITY GOVERNMENT

City Hall.....515-462-1422

124 W. Court Ave., Winterset, IA 50273

Monday - Friday, 8 a.m. to 4:30 p.m.

City Council: Council meetings are usually held on the first and third Monday of each month unless it falls on a holiday. Meetings are typically held at 7 p.m. at City Hall.

Mayor and Council members

Thomas Leners, Mayor.....515-468-3222

tom.leners@winterset.gov

Chris Fairholm.....515-462-9032

At Large • chris.fairholm@winterset.gov

Mary Ann Orr.....515-462-2105

North Ward • maryann.orr@winterset.gov

Michael Cook.....515-468-1976

At Large • michael.cook@winterset.gov

Michael Eller.....515-493-6647

At Large • michael.eller@winterset.gov

Mike Fletcher.....515-739-0353

South Ward • mike.fletcher@winterset.gov

Andrew (Drew) Barden, City Administrator...515-462-1422

dbarden@cwmu.net

Departments

• **Parks & Recreation**.....515-462-3258

winterset.gov/213/Parks-Recreation

Monday - Friday, 8 a.m. to 4:30 p.m.

Director: Sky Smothers

• **Building and Zoning**

Rich Parker, Building Inspections

Veenstra & Kimm Inc......515-249-2761

• **Finance Department**.....515-462-1422

Finance Officer: Sam Anker

• **Fire Department**.....**EMERGENCIES 911**

Non-emergencies.....515-462-4840

124 W. Court Ave., Winterset • wintersetfiredpt@aol.com

Fire Chief: Jayson McDonald

Assistant Chief: Jeff Johnston

• **Municipal Utilities**.....515-462-3601

After Hours Emergency.....515-462-3575

124 W. Court Ave., Winterset

General Manager: Steve Benshoof, sbens@cwmu.net



City Park Bridge



John Wayne Birthplace and Museum

• **Library**.....515-462-1731

123 N. Second St., Winterset • library@winterset.lib.ia.us

Hours: Monday - Thursday, 9 a.m. to 7 p.m., Friday, 9 a.m. to 5 p.m.

Saturday, 9 a.m. to 1 p.m., Sunday: Closed

Library Director: David Hargrove

• **Police Department** (non-emergency)515-462-1423

1012 N. John Wayne Drive., Winterset

Chief Ryan Pittman

• **Street Department**.....515-462-4273

1110 N. Fourth Ave., Winterset

Street Superintendent: Ryan Flaherty

• **Code Enforcement**.....515-462-1422

Code Enforcement Officer: Hollie Burgus, hburgus@cwmu.net

• **Waste Collection**.....515-462-1422

• **Sewer Department**

• **Waste Water Treatment Facility**.....515-462-3764

EMERGENCY.....**515-462-1233**

2255 Norwood Ave., Winterset

Nic Smith, USW Utility Group Project Manager

• **City Park**, 300 S. Ninth St. Winterset City Park has many wonderful features spread out over 76 acres: three limestone shelter houses, play equipment, restrooms, picnic areas, campground, hedge maze, lower park natural area, Cutler-Donahue Bridge, Clark Tower, and other historical sites. City Park celebrated 150 years in 2022 and, in 2021, was officially listed as a Historic District on the National Register of Historic Places. City Park begins normal spring operation (water turned on, tower road open, shelter use) in April. The road to Clark Tower closes each night at sunset.

• **Winterset Aquatic Center**, 1201 W. Jefferson St. The Aquatic Center offers a variety of fun features for the whole family to enjoy such as slides, sprays, shade, grass area, zero-depth entry and concessions. The Aquatic Center water is heated for added comfort. Aquatic programming includes open swim times, lessons, exercise classes, private parties and lots more.

• **Cedar Lake** is located a few miles north of the city of Winterset. The lake is managed by Winterset Municipal Utilities and is the drinking water supply for the residents of Winterset. The Historic Jurgensen Bridge was relocated to this site in 2019. With the completion of the Cedar Lake Nature Trail, users can now walk around the lake (approx. 3.2 miles). The nature trail has a unique human-powered pulley system you must use to cross the creek. Boats are allowed; however, boats are restricted to only use of electric motors. Picnic tables are located throughout the park; however, you are asked to take your trash with you when you leave as this park does not have any garbage cans.

• **Whistle Stop Park**, 407 W. North St. This neighborhood park includes a basketball court, open shelter, play

equipment, drinking fountain and small open grass area.

• **Memory Lane Park**, 517 E. Lane St. This neighborhood park includes an open shelter, play equipment, basketball court, small open grass area and off-street parking.

• **Carver Memorial Park**, 112 E. Court Ave. (next to Winterset Fire Department). Dedicated in 1988, this small park is a tribute to the memory and ideas of George Washington Carver. A large mural was installed in 2014 to honor the 150th anniversary of Dr. Carver's birth. The mural, of hand-made ceramic tiles, is named "Dream Big Dreams." This public art project was a collaboration of local students, area educators/professionals, volunteers and donors. The mural honors Carver's love for education, art, nature and his dream to make a better world.

• **City Park Campground**, 225 S. 10th St. Facilities include 40 sites with 50/30/15-amp electric service, water, sewer hook-ups, fire rings, picnic tables, shower/restroom building, and five tent sites. Reservations can be made online at winterset.gov/247/City-Park-Campground or over the phone at 515-462-3258, 8 a.m. to 4:30 p.m., Monday through Friday.

• **Winterset Dog Park**, 1402 E. Court Ave. (east of the Soccer Complex). The Dog Park includes a 4-acre large-dog area and a .5 acre small-dog area, both completely fenced with drinking fountains, benches, play equipment and a shade structure. An annual permit is required to use the dog park. The dog park permit is included for city of Winterset residents who have a current dog license tag on their pet. Non-residents may purchase a dog park pass for \$5 weekly or \$10 annually. Dog Park passes are available at the Parks and Recreation Office located in City Hall. Dogs must be current on rabies

vaccination, be older than 4 months of age and in good health. Dog handlers must be 18 years old with one or two dogs only. Children younger than 9 may not enter the fenced-in area for safety reasons. Complete rules are posted at the dog park and online at <https://winterset.gov/260/Winterset-Dog-Park>.

• **Winterset Skate Park/Rotary Plaza**, 517 S. Fourth Ave. The Winterset Skate Park features a street-plaza style design with various transitions and features for all skill levels. The park includes a shelter house, picnic tables, benches and drinking fountain.

• **Martin Marietta Softball Complex**, 1100 E. Court Ave. The complex has two adult-sized softball fields. Winterset Adult Softball Leagues and tournaments are played here. Youth teams practice here and may play some games. The east diamond is lighted. Both fields are irrigated to enhance the quality of the turf.

• **Martin Marietta Soccer Complex**, 1200 E. Court Ave. The soccer complex is the home of the Winterset Area Soccer Club (WASC) Program. Amenities include: 9 acres of multiple fields, irrigation, drainage and a large parking lot. Improvements include a new shelter house and expanded area (adjacent to the dog park) for the younger ages.

• **Giffin Fields**, Highway 92 (across from Bomgaars). This complex is home to the Winterset Little League Baseball/Softball program. Amenities include three skinned fields, batting cage, restrooms, concession pavilion and shade structure.

• **Tennis/Pickleball Courts**, 1201 W. Jefferson St. Two courts are available on a drop-in basis most anytime except during scheduled activities such as lessons and leagues. Permanent pickleball lines are painted and two portable nets are provided during the summer months. ♦

Madison County Development Group focuses on prosperity

Madison County Development Group is a 501(c)(6) nonprofit with organized economic development efforts by predecessor

entities dating back at least 60 years. The group works on behalf of all Madison County citizens to increase economic activity and grow the tax base. Funding comes from private businesses and a variety of government entities — primarily Madison County and the city of Winterset. Madison County Development Group (MCDG) is governed by a board of directors made up of private industry representatives and representatives of local government.

Madison County has a bright future considering the southern expansion of West Des Moines. MCDG is working to make sure other parts of Madison County are attractive for investment as well.

MCDG annually reviews dozens of inquiries on the availability of land or existing buildings here in Madison County. These inquiries are generated locally, from the State of Iowa, Des Moines Partnership and other sources such as Iowa Area Development Group. It pursues prospects that match the capabilities existing in Madison County.

MCDG offers a variety of services to prospective and existing businesses of all sizes. It works with the Small Business Development Center to provide no-charge business development advice. It operates its own low-interest Revolving Loan Fund covering Madison County to support business and artistic ventures. It also assists local businesses in accessing several other revolving loan funds to augment and supplement the funding available from local banks.

MCDG coordinates with the Iowa Economic Development Authority in updating its local laborshed study to keep employers up to date on trends in employment and salaries for a broad variety of job descriptions. MCDG co-sponsors activities with the chamber such as the Hidden Madison County tours. MCDG also administers the Greater Madison County Community Foundation.

Madison County Development Group

1217 N. Sixth Ave., Suite 3, Winterset
515-462-1891

Ryan Marquardt, Executive Director
director@madisoncountydevelopment.com
www.madisoncountydevelopment.com
www.facebook.com/
madisoncountydevelopment

Promoting business and tourism



Madison County Welcome Center

Madison County Chamber and Welcome Center

73 Jefferson St., Winterset • 515-462-1185

chamber@madisoncounty.com

The Madison County Chamber & Welcome Center promotes local businesses and tourism by providing information and organizing events for local residents as well as visitors. For information about businesses, attractions, events and much more, visit www.madisoncounty.com and exploremadisoncounty.com.

CHAMBER STAFF

Sarah Pugh, CEO, exec@madisoncounty.com

Teddi Yaeger, Tourism & Marketing Manager, tourism@madisoncounty.com

Sandy Kordick, Finance & Welcome Center Manager, acctg.cbf@MadisonCounty.com

Welcome Center Staff: Stephanie Gerleman, Leslie Allen, Catherine Stetzel, chamber@madisoncounty.com

HOURS

May through October: Monday - Saturday, 10 a.m. to 4 p.m.

November and December: Tuesday - Friday, 10 a.m. to 3 p.m.; Saturday, 10 a.m. to 2 p.m.

January through April: Tuesday - Friday, 10 a.m. to 3 p.m.

ST. CHARLES WELCOME CENTER

202 E. Main St., St. Charles • 641-396-2506

chamber@MadisonCounty.com

May - October: Thursday – Sunday, 11 a.m. to 3 p.m.

SCHOOLS **Madison County is home to quality school districts**

The Winterset, Interstate 35 and Earlham community school districts are located in Madison County and provide quality educational opportunities for their students, as well as athletic, artistic and other extracurricular activities.

Winterset Community School District WWW.WINTERSET.K12.IA.US

DISTRICT CONTACTS

District Office515-462-2718

303 Wambold Drive, Winterset, Iowa 50273

Office Hours: 7 a.m. to 4 p.m.

Justin Gross, Superintendent

jgross@winterset.k12.ia.us

Operations/Transportation515-462-2550

923 E. Lane St., Winterset, Iowa 50273

Ray Dawson, Operations Supervisor

rdawson@winterset.k12.ia.us

Ben Messer, Transportation Supervisor

bmesser@winterset.k12.ia.us

Technology515-462-3010

706 W. School St., Winterset, Iowa 50273

Matthew Pudenz, Technology Coordinator

mpudenz@winterset.k12.ia.us

SCHOOLS

Winterset Elementary School515-462-1551

Pre-K-Third Grade. 404 S. Second Ave., Winterset, Iowa 50273

Doug Hinrichs, Principaldhinrichs@winterset.k12.ia.us

Winterset Middle School515-462-3010

Fourth-Sixth Grade. 706 W. School St., Winterset, Iowa 50273

Julie Plant, Principaljplant@winterset.k12.ia.us

Winterset Junior High515-462-3336

Seventh-Eighth Grade. 720 Husky Drive, Winterset, Iowa 50273

Josh Sussman, Principaljsussman@winterset.k12.ia.us

Winterset High School515-462-3320

9th-12th Grade. 720 Husky Drive, Winterset, Iowa 50273

Cam Smith, Principalcsmith@winterset.k12.ia.us

Chad Sussex, Assistant Principalcsussex@winterset.k12.ia.us

Nick Mulder, Activities Director (7-12).....nmulder@winterset.k12.ia.us



Winterset Elementary

SCHOOL BOARD

School Board meetings are held on the second Monday of each month in the board room (generally at 5 p.m.) at the District Administration Office, 303 Wambold Drive in Winterset.

Board members

Jared McDonald, Presidentjmcdonald2@winterset.k12.ia.us

Gina Robinson, Vice Presidentgrobinson@winterset.k12.ia.us

Malcolm Cortnermcortner@winterset.k12.ia.us

Emily Rethmeiererethmeier@winterset.k12.ia.us

Tim Mohstmohs@winterset.k12.ia.us

Interstate 35 School District WWW.I-35.K12.IA.US



Interstate 35 Elementary and Middle School

SCHOOLS

- Interstate 35 Little Roadrunner Daycare**
Kristen Harris, Daycare Director641-765-5220
- Interstate 35 Preschool**
Danielle Woods, Elementary Principal641-765-4901
- Interstate 35 Elementary**
Danielle Woods, Elementary Principal641-765-4818
- Interstate 35 High School**
Adam Beckel, Secondary Principal641-765-4818

DISTRICT CONTACTS

Interstate 35 Community School District has a central campus in Truro that serves the communities of New Virginia, St. Charles and Truro.

District Office641-765-4291
405 E. North St., Truro, IA 50257

Chad Grandon, Superintendent cgrandon@i-35.k12.ia.us

April Hughes, Business Manager ahughes@i-35.k12.ia.us

Cindy Kennedy, Superintendent's Secretary
..... ckennedy@i-35.k12.ia.us

Bobbie Finley, Transportation Director
..... bfinley@i-35.k12.ia.us

Elizabeth Ford, Registrar eford@i-35.k12.ia.us

Brayton Weber, Dean of Students and Activities Director
..... bweber@i-35.k12.ia.us

SCHOOL BOARD

- Nathan Gibson**, President nathangibson@i-35.k12.ia.us
- Melissa Keller**, Vice President mkeller@i-35.k12.ia.us
- Dan Hutton** danhutton@i-35.k12.ia.us
- Monica Strange** mstrange@i-35.k12.ia.us
- Jessica Bucklin** jessicabucklin@i-35.k12.ia.us



Winterset

COMMUNITY SCHOOLS

303 Wambold Drive
Winterset, Iowa 50273
Justin Gross, Superintendent
(515) 462-2718

www.winterset.k12.ia.us

The logo for Winterset Schools, featuring a stylized 'W' inside a circle with the words "WINTERSET SCHOOLS" around it.

Earlham Community School District

WWW.ECSDCARDS.COM


Earlham Community School

DISTRICT CONTACTS

District Office 515-758-2214

535 N. Chestnut Ave., Earlham, IA 50072

Steve Kaster, Superintendent 515-758-2214, ext. 150

skaster@ecsdcards.com

SCHOOLS

Earlham Elementary School

Earlham Middle School

Jason Hammen, Elementary Principal 515-758-2214, ext. 138

jhammen@ecsdcards.com

Earlham High School

Kristin Sheffield, Secondary Principal 515-758-2214, ext. 222

ksheffield@ecsdcards.com

SCHOOL BOARD

Joey Morrison, President jmorrison@ecsdcards.com

Erin Christensen, Vice President echristensen@ecsdcards.com

Jess Tiemeyer jtiemeyer@ecsdcards.com

Kasey Henke khenke@ecsdcards.com

Charlie Lenz clenzen@ecsdcards.com

HIGH QUALITY COLLISION REPAIR WITH A PERSONAL TOUCH.



BEFORE

AFTER!



AL'S BODY & CUSTOMS



(515) 493-1106 815 E GREEN ST. • WINTERSET

MADISON DESTINATION

Window shopping? Come in and discover fashionable clothes, unique finds, and much, much more!



Angel Wings & CT

116 N 1st Ave, Winterset
www.angelwingsandct.com
(515) 462-4227

Find unique women's boutique clothing, scarves, handbags and other fashionable items to add to your wardrobe in our brick and mortar store in Winterset, IA.



B Shannon Designs

51 East Jefferson Street
www.bshannondesigns.com
515-462-6749

Looking for an inspired piece of jewelry or want to remake an existing piece? Take a look at what B. Shannon Designs can offer.



Madison County Mercantile

58 E Court Avenue, Winterset
madisoncountymercantile.com
(515) 462-4535

Madison County Mercantile, Inc. in Winterset is the area's leading boutique serving Winterset and surrounding areas since 1995.



Piece Works Quilt Shop

54 E. Court Winterset, IA
www.piecieworksquilts.com
515-493-1121

Piece Works Quilt Shop is a full-service quilt shop offering thousands of bolts of fabrics.



ORATIONS UNIQUE ANTIQUES BEAUTIFUL COSMETICS

COUNTY N SHOPPING

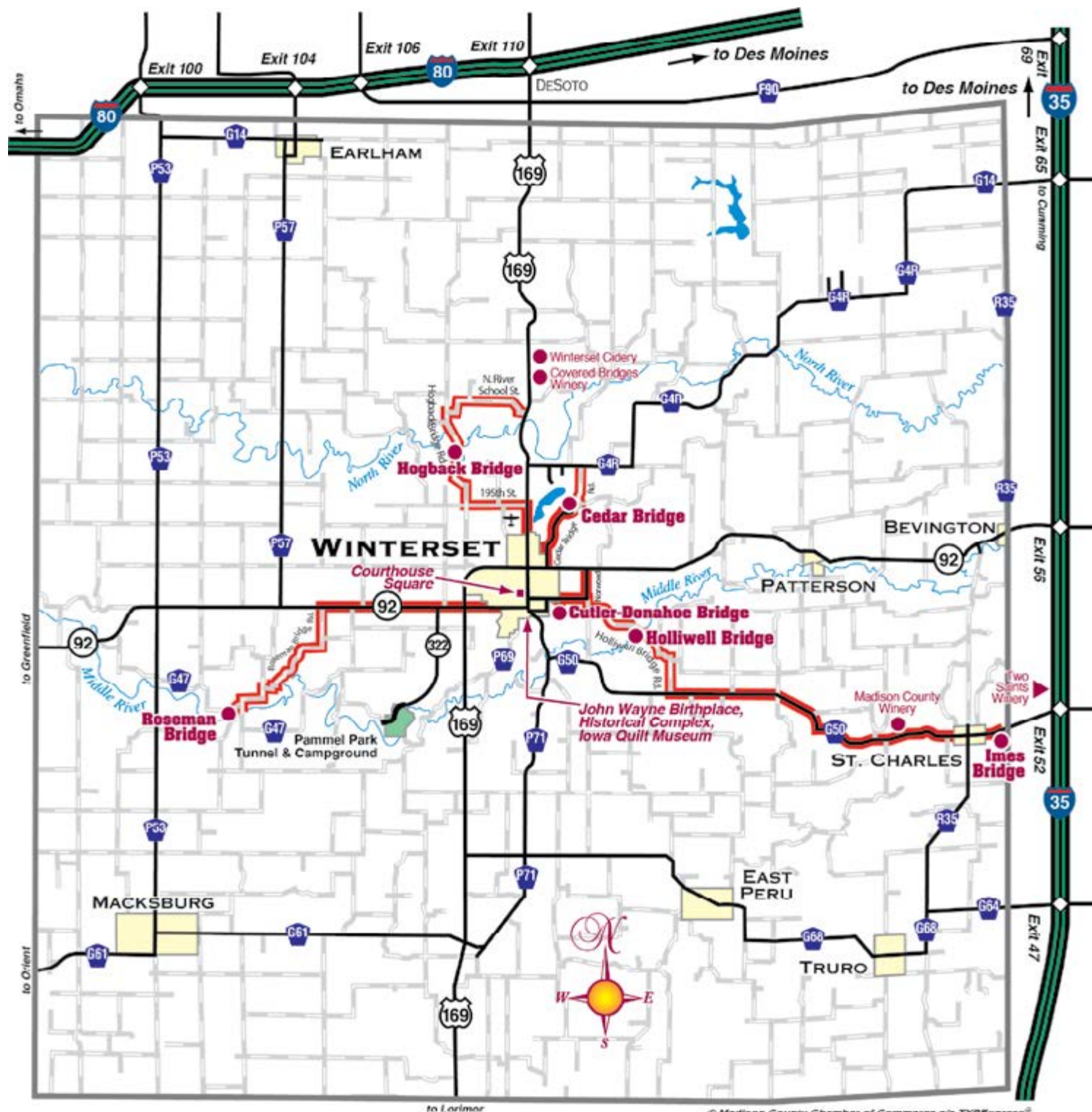
Scan the
QR code
to view
their
website!



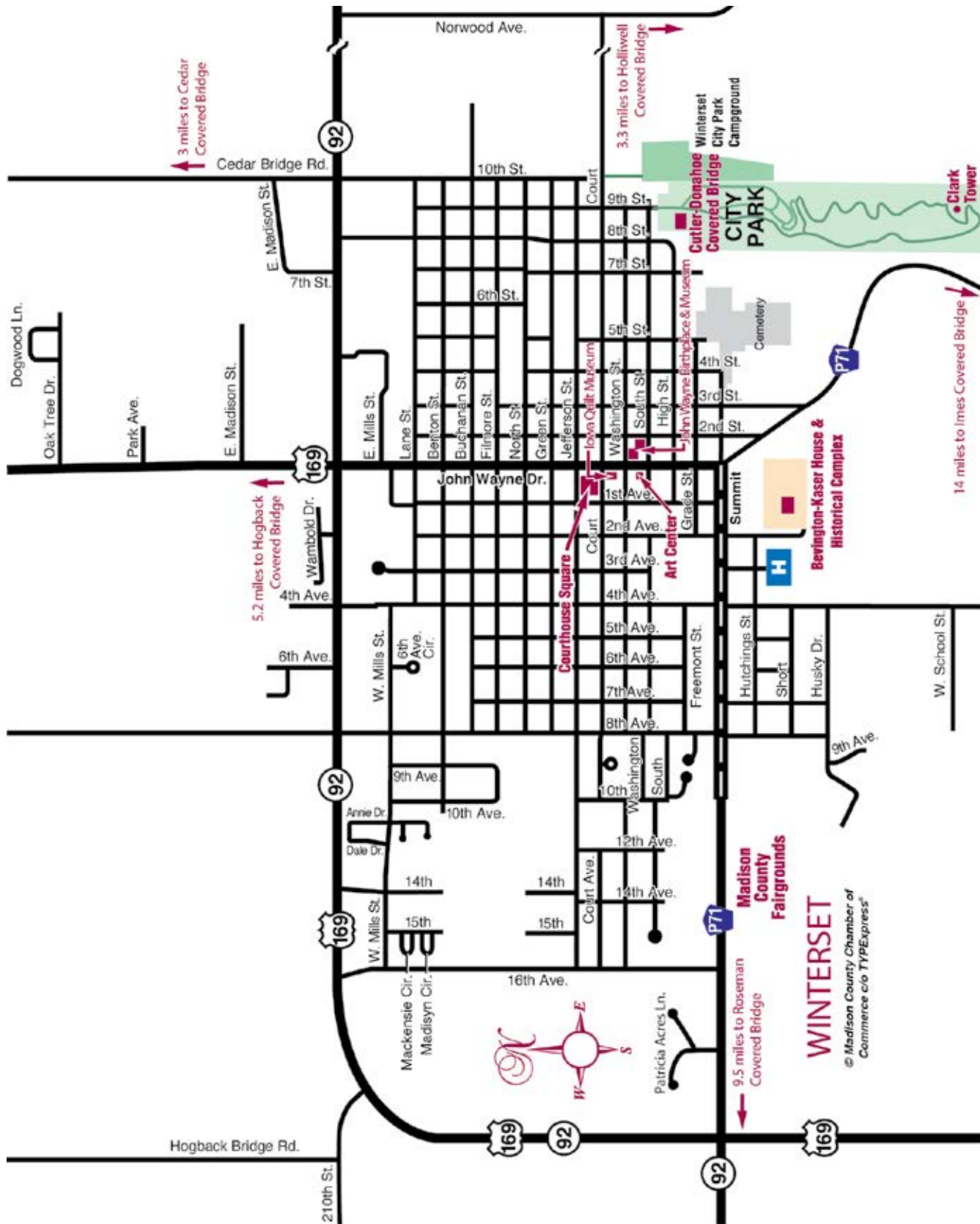
Pine Creek LTD

110 N 1st Ave, Winterset, IA
(515) 468-4736

Home & seasonal decor
gifts & gourmet food • new &
antique furniture • lamps and
candles wall art & mirrors
• rugs, pillows, table linens,
• vases & florals • women's
accessories • locally-roasted
coffee, tea, candy & more!



- | | | | |
|--------------------|----------------|--------------------------|--------------------|
| Interstate Highway | State Highway | Signed Routes to Bridges | Rock Road (gravel) |
| U.S. Highway | County Highway | Paved Road | Municipal Limits |



WORSHIP

Worship opportunities in Madison County

Those looking to join a church congregation or simply attend a service can find a variety of options to choose from in Madison County. Many of the churches maintain their historic buildings and small-town hospitality.



Earlham United Methodist



St. Charles Parish



Trinity Lutheran Church

EARLHAM

Bear Creek Friends Church

18038 Bear Creek Road, Earlham, IA 50072

515-758-2232

www.bearcreekfriends.org

Crossroad Church

18293 365th St., Earlham, IA 50072

515-834-2626

www.crossroad-church.com

Earlham Church of Christ

535 N.W. Sixth St., Earlham, IA 50072

515-758-2787

earlhamchurch.com

Earlham Friends Church

115 N.E. Second St., Earlham, IA 50072

515-758-2285

Earlham United Methodist Church

145 N.E. Sycamore Ave., Earlham, IA 50072

515-758-2568

On Facebook

Early Chapel Christian Church

1440 165th St., Earlham, IA 50072

515-758-2483

On Facebook

First Presbyterian Church

255 E. First St., Earlham, IA 50072

515-758-2620

On Facebook

Peace Lutheran Church Adel/Earlham

34128 L Ave., Adel, IA 50003

515-834-2527

iowapeacechurch.com

Penn-Center Methodist Church

1282 Pitzer Road, Earlham, IA 50072

EAST PERU

Peru United Methodist Church

301 Brown St., Peru, IA 50222

641-728-4479

MACKSBURG

Macksburg United Methodist Church

202 W. Church St., Macksburg, IA 50155

641-768-2342

Macksburg and Hebron Parish

305 S. West St., Macksburg, IA 50155

PATTERSON

Patterson United Methodist Church

150 Sixth St., Patterson, IA 50218

515-462-2912

On Facebook

ST. CHARLES

St. Charles Parish

305 West Main St., St. Charles, IA 50240

641-396-2441

<https://saintcharlesparish.org>

Calvary Baptist Church

109 N. Hartman St., St. Charles, IA 50240

641-396-2234

www.calvarybaptistchurchstc.com

TRURO

Congregational Christian Church-UCC

155 E. Garfield St., Truro, IA 50257

641-765-4524

VAN METER

Trinity Lutheran Church

1195 Prairieview Ave., Van Meter, IA 50261

515-996-2093

trinity-vm.org

WINTERSET

Faith Lutheran Church

815 S. Second Ave., Winterset, IA 50273

641-745-5143

www.faithwinterset.org

First Christian Church

103 W. Green St., Winterset, IA 50273

515-462-1276

First United Methodist Church

309 E. Jefferson St., Winterset, IA 50273

515-462-2912

www.wintersetumc.org

First United Presbyterian Church

210 W. Green St., Winterset, IA 50273

515-462-3261



St. Joseph Catholic Church



St. Paul Lutheran Church

Foursquare Gospel Church

224 E. Court Ave., Winterset, IA 50273

515-462-1259

On Facebook

Grace Baptist Church

703 W. Green St. Winterset, IA 50273

515-462-2600

gracebaptistwinterset.org

Kingdom Hall of Jehovah's Witnesses

1811 N. John Wayne Drive,

Winterset, IA 50273

515-462-2823

www.jw.org

Middle River Primitive Baptist Church

2011 205th Lane, Winterset, IA 50273

515-250-2344

New Bridge Church

1305 W. Jefferson St., Winterset, IA 50273

515-462-1050

www.newbridgewinterset.com

Oak Grove Community Church

2471 Elderberry Ave., Winterset, IA 50273

515-462-1539

www.oakgrove-church.com

WEEKLY SPECIALS

MEDIUM MONDAY'S

Any Medium Pizza \$10 each



THIN THURSDAY'S

Large ThinCrust Specialty Pizza and a Free Cookie or Brownie



TACO TUESDAY'S

\$12.99 Large Taco Pizzas

Sour Cream extra charge



FRENCH FRIES FRIDAY'S

Add fries for \$4



WING WEDNESDAY'S

8 Bone-out Wings \$8



SANDWICH SATURDAY'S & SUNDAY'S

Sandwich, chips, and pickle \$7 add fries for \$1





Scan to Apply



THE HUT IS HIRING

ALL POSITIONS
ALL SHIFTS

Apply online at:
hiringtoday.com/comesinv

DRIVERS - We supply the car and gas!



FUNDRAISERS

Let us host a fundraiser for your club, organization or school, and **EARN 20%** of your hometown Pizza Hut's sales for your cause!

For More Information email fundraisers@comesinv.com or Call 515-330-1172



WORSHIP

Worship opportunities in Madison County

Redeemer Church

200 N. 16th Ave., Winterset, IA 50273
515-480-7034
www.redeemerwinterset.com

St. Paul Lutheran Church

1120 N. Eighth Ave., Winterset, IA 50273
515-462-4270
www.stpaullutheranchurch.net

St. Joseph Catholic Church

1026 N. Eighth Ave., Winterset, IA 50273
515-462-1083
www.saintjosephchurch.net

Winterset Church of the Nazarene

418 W. Summit St., Winterset, IA 50273
515-462-2335
www.facebook.com/WintersetNazarene

Winterset Community Church

113 S. Second St., Winterset, IA 50273
515-462-5781
www.wintersetcommunitychurch.org



Winterset Community Church

Winterset Seventh-Day Adventist Church

903 W. Summit St., Winterset, IA 50273
515-462-3060
<https://wintersethope.my.canva.site/wsda>

Word of Life Family Church

2611 U.S. 169, Winterset, IA 50273
515-462-4405
wolchurch.com



SELF-SERVE!

GET YOUR DOG

SQUEAKY CLEAN!



Huge tub for any size dog!
Shampoo, conditioner and
blow drying included



Suds & Pups
DOG WASH

215 N 1st Ave, Winterset



TROPICAL SNO

DOLE

SOFT SERVE

FRESH-SQUEEZED

LEMONADE



PRETZEL

BITES



Tiki
TREATS

MINI

DONUTS

SATURDAY
MORNINGS AT
THE FARMERS
MARKET!

413 E. Grade St.
Winterset

The Underground Railroad leaves its mark on Madison County history

"Underground Railroad" is a term used to describe the activities of runaway slaves, now termed freedom-seekers, and those who assisted them in escaping bondage to a location where they could live as free men and women. The work was illegal and done in secrecy, so exact dates, places and number of slaves assisted are difficult to pinpoint, but Madison County researchers have identified seven freedom-seekers by name and more than 60 men and women who assisted them.

In Madison County, the Underground Railroad was active from 1857 through 1862. The work did not involve a railroad, as the railroad didn't arrive in Madison County until 1872. Freedom-seekers came from northwestern Missouri and crossed into Iowa with the goal of reaching Polk or Jasper County. From there, they made their way to railways in eastern Iowa, then to Chicago, and finally on to safety in northeastern states or in Canada.

Under the threat of large fines and imprisonment, farmers and their families put their lives in danger in the effort to assist the freedom-seekers on their way through rural Madison County by providing food, shelter and transportation. From the accounts and early maps, we can plot their homes and trails used. Most of the trails used are still well-traveled roads in Madison County. The determination of all those involved is an inspiring example of courage, especially due to a sizeable number of Southern sympathizers in Madison County who made Underground Railroad activities even more challenging and dangerous.

Family members could foster very different views on slavery, as shown in this story. A Madison County farmer, James Farris,

had a freedom-seeker at his door and, surprisingly, they recognized each other. The slave admitted he belonged to the farmer's son-in-law in Missouri. The slave was given shelter by the family in the attic of their log cabin. Later the same day, who should appear but the son-in-law with a slave-hunting party. They were also accommodated for the night on the first floor, so slave and master slept under the same roof. In the new day, the hunting party was advised to continue in one direction while the slave was told to head to freedom in another direction. After a disappointing day, the son-in-law and his group stayed one more night before heading home without his \$1,000 slave (nearly \$30,000 today).

For more information, visit madisoncountyhistory.net and click on the Underground Railroad tile. ♦

Courtesy of Madison County Historical Society / Madison County Historic Preservation Commission

The Zombie Hollow

Halloween Magic
FOR ALL AGES!

2310 Saint Charles Rd
Winterset, Iowa

Open every weekend
in October!

www.thezombiehollow.com

EVERYTHING IS BETTER WITH UNION STATE BANK!



- | | |
|---------------------------------|-----------------------------------|
| ✕ FREE Checking | ✕ FREE Check Images Online |
| ✕ FREE With E-statements | ✕ FREE Bill Pay |
| ✕ FREE Mobile Banking | ✕ FREE E-statements |
| ✕ FREE Mobile Deposit | ✕ FREE Account Alerts |
| ✕ FREE Zelle | ✕ FREE SMILES! |

Open an account today!



3 LOCATIONS
TO SERVE OUR CLIENTS

611 W. Highway 92 • Winterset • 515-462-2161
6305 Mills Civic Pkwy. • WDM • 515-440-2265
160 E. Garfield • Truro • 641-765-4525



USBIOWA.COM

SHOP LOCAL • DINE LOCAL • BANK USB

Member
FDIC



MADISON

EATS & DRINKS

Winter, spring, summer or fall,
you will find cool vibes, tasty eats
and smooth drinks – indoors or out!



The Bakery Unlimited

119 N. John Wayne Dr., Winterset
515-462-2261

*Family owned and operated
for 40 years. Old fashioned
bakery with products made
from scratch. Special order
cakes and misc.
Try our Famous Red Delicious
Apple Fritters!*



Montross Pharmacy

120 N 1st Ave, Winterset
515-462-2282

*A specialty gift shop
with an old-fashioned
soda fountain*



Sports Page

224 East Hwy 92, Winterset
www.thesportspagegrill.com
(515) 462-4673

*Famous for our burgers, live
music, and great local Iowa
Craft Beer with locations
in Ankeny, Indianola, and
Winterset.*



The Candy Bar

107 W Court Ave, Winterset
515-420-5562

*A candy store offering
pre-packaged candy,
snacks, and treats.
Bulk candy sold by
the pound as well.*



C O U N T Y



SWEETS

Scan their QR code to
view their menu!



The Drift

112 North 1st Ave Winterset, IA 50273
www.thedriftia.com
(515) 462-1178

*A taproom in Winterset,
Iowa with craft beer, wine,
cocktails, and food.*



Urban on the Square

**Urban Taproom
Bar & Grill**

69 E Jefferson, Winterset • 515-462-6700
1511 John Wayne Dr, Winterset • 515-462-5192

*Two "Urban" experiences right here
in Madison County. At the Taproom,
enjoy craft beer brewed onsite,
tasty bites and friendly service!
While at the Square, enjoy culinary
artistry, simply delightful dishes!*



Learn, explore and enjoy at Madison County parks

The Madison County Conservation Board manages 13 county parks, located primarily in rural areas throughout the county, that provide a myriad of recreational opportunities. Take the opportunity to explore the county's offerings to enjoy the great outdoors.

Madison County Conservation Center

The new Madison County Conservation Center is a portal to the outdoors, providing an enriched understanding of natural resources through education, exploration and recreation. It serves to foster care about the natural beauty of Madison County — a landform known as the Southern Iowa Drift Plain, where rolling hills were formed from glacial till and molded by wind-blown loess soils and scouring rivers and streams.

Centrally located within Pammel State Park, the Conservation Center uses natural elements to tell a story about the legacy of our land and how it shaped our civilization.

From its geology and forests, to its waterways, natural grasslands and wildlife, the extraordinary vision of the conservation center's planning and design envelops patrons in a sensory and educational experience of the land.

Operations Center

Location: 2273 Clark Tower Road, 1 mile south of Winterset on the west side of County Highway P-71.

Information: The administrative office for the Madison County Conservation Board is located at the Operations Center. All full-time staff personnel have their offices there. The phone number is 515-462-3536.

Historical note: The office is located on a portion of property that was once the site of a large Civilian Conservation Corp (CCC) and Veterans Conservation Corps (VCC) camp that was active in the 1930s. CCC structural foundations and a memorial stone are featured.

Cedar Covered Bridge Park

Location: 3 miles northeast of Winterset on Cedar Bridge Road.

Information: Enjoy picnic facilities, one of which is accessible, while visiting the bridge and enjoying the surrounding pines and deciduous trees, brick patio gardens, and tiered beds of perennial and annual plantings.

Facilities and features: Cedar Covered Bridge (built in 1883, rededicated in 2004), two gazebo shelters, pit-vault style bathrooms located in the south parking lot.



Fellowship Forest

Clanton Creek Natural Resource Area

Location: Approximately 3 miles southwest of East Peru. Routes are marked by standard roadside County Park arrowhead signs.

Information: The area features a variety of habitats and wildlife areas with more than 10 miles of trails.

Facilities and features: 6-acre pond, more than 10 miles of hiking trails, four parking areas, upland oak/hickory forest, oak-savanna prairie, tallgrass prairie, wetland areas adjacent to small creeks and abandoned ponds.

Criss Cove

Location: Approximately 8 miles south of Winterset at the southwest corner of the intersection of U.S. 169 and County Road G-61.

Information: Enjoy fishing, small boating, hiking and camping.

Facilities and features: 9-acre pond, four fishing jetties (one is accessible), groomed shoreline fishing locations, boat landing and docks for small boats and canoes (electric motors only), modern and primitive campgrounds, pit-vault bathrooms and hiking trail.

Fellowship Forest

Location: Approximately 4 miles southwest of Winterset, west of U.S. 169 on Carver Trail. Follow standard County Park arrowhead roadside directional signs.

Information: Fellowship Forest was originally a Methodist Church youth camp. A beautiful, clear-running creek meanders the entire length of the park, cascading over numerous limestone outcroppings, creating 3- to 5-foot high waterfalls.

Facilities and features: 55-acre upland timber; modern picnic shelter with seating capacity of 60, group grill, electrical outlets and lights; pit-vault restroom; pond with accessible fishing deck; accessible trail from parking lot to fishing dock and hiking trails.



Guye Woods suspension bridge



Middle River Park

Goeldner Woods

Location: Approximately 5 miles southeast of Earlham.

Information: One of the most unique aspects of Goeldner Woods is the annual spring woodland wildflower display. Due to cool north-facing woodland slopes and rich virgin soils, this area explodes into pastel color tones as the forest floor literally is blanketed with millions of wildflower blooms. More than 60 species of woodland flowers have been identified.

Facilities and features: 40-acre timber, picnic area, pit-vault bathroom, hiking trails.

Guye Woods

Location: Approximately 6 miles northeast of Winterset in the 2400 block of 160th Street.

Facilities and features:

100-foot-long cable suspension bridge over North River (no formal canoe access at this site), memorial stone recognizing the Guye family as one of Madison County's original settlers.

Hanson Prairie Preserve

Location: 1.5 miles east of Winterset on State Highway 92 and north 1.75 miles on Natural Trail.

Facilities and features:

Approximately 30 acres of tallgrass prairie, Cedar Creek, walking trails, parking area on northwest corner.



Bridges Financial
"We've got you covered."

**Tax & Accounting
Investments
Life & Health Insurance**

email: info@bridgesfa.com

Visit our website: bridgesfa.com

56 Court Avenue • Winterset • 515-462-9500

Where Madison County's Past Meets Your Present.



815 S. 2nd Ave. • Winterset
515-462-2134 • historyonthehill.org
HOURS: May 1-Oct. 15: Mon.-Sat. 11am-4pm, Sun. 1-5pm



Conservation Center



Pammel Park

Jensen Marsh

Location: Approximately 3 miles south of Bevington.

Facilities and features: 80 acres of wetland/marsh, tallgrass prairie, upland timber, abandoned railroad bed hiking trail, two parking areas.

McBride Timber Preserve

Location: Approximately 5 miles northwest of Winterset.

Facilities and features: 40 acres of upland timber.

Middle River Park

Location: 2278 Clark Tower Road, Winterset, 1 mile south of Winterset on County Road P-71 with the entrance of the park directly across the highway from the Operations Center.

Facilities and features: Two-level picnic shelter, modern bathrooms, play equipment, canoe access to Middle River, hard-surfaced accessible trail.

Pammel Park

Location: 1900 Pammel Park Road, Winterset, 4 miles southwest of Winterset. Travel west on State Highway 92 for 1 mile, turn south on State Highway 322 for 3 miles.

Information: The Madison County Conservation Board's Environmental Education/Nature Center is located at Pammel Park. This former rural chapel has been transformed into a nature center where many environmental education programs are conducted by

Healthcare you can trust.

Eve Harris, PA-C
Dr. Jennifer Elkin, Medical Director
(515) 758-2907

Monday - Friday
8:00 am - 4:00 pm
125 W 1st Street
Earlham, IA 50072
www.madisonhealth.com

Let Us Protect You

With us, you're not just getting insurance – you're gaining a partner committed to your security and satisfaction.

We provide financial protection against the unexpected, ensuring you can avoid severe financial hardship.

Get A FREE Personal Price Plan Today!

61 E Green St. Winterset, IA | (515) 462-3366 | www.charlottespeer.com

OFFERING PRIVATE & GROUP LESSONS IN:

Nosework, AKC STAR Puppy, Canine Good Citizens & more!

Our focus is to help you meet your goal, to have the best dog possible!

KBP DOG TRAINING

KBPDogTraining.com
Reach out today! 515 681 4860

the Board's naturalist throughout the year.

A unique feature of the park is the Harmon Tunnel — the only highway tunnel in Iowa. In 1858, the tunnel was originally dug by William Harmon and his sons as a small chute to carry water diverted from the Middle River to power a sawmill that was eventually converted to a grist mill. The mill was abandoned in 1904, and the tunnel expanded in size to allow vehicle traffic in 1925. The tunnel has since been expanded and reinforced to accommodate modern vehicles.

Middle River makes a great horseshoe loop in the park. The dividing wall is called the backbone, which is a natural limestone ridge more than 100 feet high. When standing atop the backbone directly over the tunnel, you can see Middle River flow in all four directions. The geology of the backbone is as extensive as the plant life and well-worth exploring.

Facilities and features: Backbone Shelter, Pammel Lodge, picnic grounds, modern bathrooms, play equipment, trails, Middle River ford, Harmon Tunnel, modern campgrounds, cabins, dump station, and Nature Center activities.

Schildberg Access

Location: North side of Highway 92 approximately 10 miles west of Winterset.

Information: This is a convenient, developed site for canoers and kayakers to access the Middle River.

Facilities and features: Parking lot, canoe/kayak access.

Winterset Outdoor Classroom

Location: Between the Winterset High School and Middle School

Information: This new 5-acre outdoor classroom is currently under construction and will provide the students and teachers of the Winterset Community Schools, as well as general citizens of Madison

County, an instructional tool, set in a natural environment situated between the Winterset High School and Middle School in a natural drainage area bordered by large oak trees.

Facilities and features: Tallgrass prairie, pollinator prairie, oak savanna, wetland areas, native plantings, observation platform, butterfly gardens, nature playscape, amphitheater, accessible walkway and turf pathways, geology wall. ♦

For a full listing of county parks, amenities and environmental education programs, visit www.madisoncountyparks.org.

To place reservations for camping and cabins, visit www.mycountyparks.com and click on Madison County.

For real-time updates, follow the Facebook Page at Madison County Conservation Board. For information, call 515-462-3536.

Melissa Johnson, RN

of Luxe Aesthetics, Premier Medical Spa Providing
Facials, Botox, Fillers and Much More,
with oversight of physician medical director Daniel J Baldi, DO

"Melissa is kind and so good at what she does. She cares about more than appearance, wanting to make her patient's feel worthy of looking and feeling their best."

— KWM



LUXE AESTHETICS



Schedule Your
Appointment
Today!

515.401.4683
1349 NW 121st St, Ste 300
Clive, IA

Plan your adventure!

Follow us on Facebook for
opening day and hours!
[/ThompsonsFallFestival](#)

Book Ahead for Fall Birthday Parties
Group Rates for Pumpkin Painting/Carving
Private Events at the Farm



Corn maze • Jump pad • Hayride to pick your own patch • & more!

1360 290th St., Macksburg • 641-431-0412

Journey into iconic America on the Covered Bridges Scenic Byway

The Covered Bridges Scenic Byway offers visitors a journey into the heart of America. The 82-plus mile route focuses on the iconic and widely-known covered bridges, as well as scenic natural areas, historical sites, cultural sites, and many other unique destinations. The Covered Bridges Scenic Byway is one of Iowa's 12 state-designated and two nationally designated scenic byways, which are a great way to experience Iowa's natural beauty, history and culture.

Byway maps and brochures are available at the Madison County Chamber of Commerce Welcome Center in Winterset, the St. Charles Welcome Center, and online at www.madisoncounty.com or by scanning this QR code.



The Covered Bridges of Madison County

Madison County originally boasted 19 covered bridges, but just six remain today, five of which are listed on the National Register of Historic Places. The bridges were covered by order of the County Board of Supervisors to help preserve the large flooring timbers, which were more expensive to replace than the lumber used to cover the bridge sides and roof. Usually, the bridges were named for the resident who lived closest. The covered bridges are open to the public, and travelers can use a detailed map to do a self-guided tour of the structures. A map is available on www.madisoncounty.com and at the Chamber of Commerce/Welcome Center.

Roseman Covered Bridge

Built in 1883 by Harvey P. Jones and George K. Foster, it is 107 feet in length and sits in its original location. Roseman was renovated in 1992 at a cost of \$152,515. In Robert James Waller's novel, "The Bridges of Madison County," and the movie of the same name, Roseman is the bridge Robert Kincaid seeks when he stops at Francesca Johnson's home for directions. It is also where Francesca leaves her note inviting him to dinner.

Also known as the "haunted" bridge, Roseman is where two sheriff's posses trapped a county jail escapee in 1892. It is said the man rose up straight through the roof of the bridge, uttered a wild cry, and disappeared. He was never found, and it was decided that anyone capable of such a feat must be innocent.

Holliwell Covered Bridge

Built in 1880 by Harvey P. Jones and George K. Foster, it is the longest covered bridge, spanning 110 feet. It remains in its original site over the Middle River southeast of Winterset. Holliwell was renovated in 1995 at a cost of \$225,000. It is featured in "The Bridges of Madison County" movie.



Holliwell Covered Bridge

Cedar Covered Bridge

Built in 1883 by Harvey P. Jones, Cedar Bridge was 78 feet long and was the last bridge open to vehicles. It was built over Cedar Creek north of Winterset on what is now U.S. Highway 169. It was moved to its present location over the same creek in 1921. In Robert James Waller's novel, "The Bridges of Madison County," Cedar Bridge is where Francesca Johnson goes to meet Robert Kincaid to help him take photographs. Cedar is also the bridge on the novel's cover. The bridge was renovated in 1998 at a cost of \$128,073.

Cedar was destroyed by an arsonist on Sept. 3, 2002. A replica of the original bridge was built from the original plans using authentic materials and methods. Cedar was once again destroyed by arson in April of 2017. Rebuilding Cedar Bridge commenced in September of 2018 and was completed in October 2019.

Cutler-Donahoe Bridge

Built in 1871 by Eli Cox, the Cutler-Donahoe Bridge is 79 feet in length and features a pitched roof. Originally located over the North River near Bevington, it was moved to its present site in Winterset's City Park in 1970. Cutler-Donahoe was renovated in 1997 at a cost of \$35,538.

Hogback Covered Bridge

Built in 1884 by Harvey P. Jones and George Foster, the Hogback Covered Bridge measures 97 feet and is in its original location in a valley north of Winterset. Hogback gets its name from the limestone ridge which forms the west end of the valley. It was renovated in 1992 at a cost of \$118,810.



Cutler-Donahoe Bridge



Hogback Covered Bridge

Imes Covered Bridge

The oldest of the remaining covered bridges, Imes was built in 1870 and is 81 feet in length. It was originally located over the Middle River west of Patterson. In 1887, it was moved to a spot over Clinton Creek southwest of Hanley. Imes Bridge was moved again to its present site over a natural ravine just east of St. Charles in 1977. It was renovated in 1997 at a cost of \$31,807.

Covered bridges make their mark on the arts

The novel

Robert James Waller was a guitar-picker, photographer, ex-business school professor and author of the best-selling hardcover book of all time. In 1992, Warner Books published his first novel, "The Bridges of Madison County." The 171-page hardcover novel has been translated into 25 languages, and more than 12 million copies have been sold worldwide. On the New York Times Best Seller list for three years (and No. 1 for 38 weeks), it topped "Gone with the Wind" in 1995 as the best-selling fiction book of all time.

The Movie

Robert Kincaid (Clint Eastwood) has come to Madison County, Iowa, in order to take pictures of the Roseman and Holliwell covered bridges. He is a professional photographer on assignment for National Geographic magazine in the fall of 1965, and he is lost. Pulling his green pickup into the driveway of a well-kept farmhouse, he stops to ask for directions. Francesca Johnson (Meryl Streep) is at home alone, her husband and two children having departed for four days to the Illinois State Fair. She has been married for 15 years, and the luxury of time to herself is an unusual break from her daily life, as is the courteous stranger approaching her for information.

These are the opening circumstances for an extraordinary

story, adapted to the screen by Richard LaGravenese from Robert James Waller's novel, "The Bridges of Madison County." Directed by Clint Eastwood, produced by Eastwood and Kathleen Kennedy, and associate produced by Tom Rooker and Michael Maurer, it is the visual representation of two people coming to terms with their own lives through each other. The film is a narrative about love and choices and consequences.

"The Bridges of Madison County" was made on location in Madison County. A reconstructed farmhouse provided the key set, with additional sequences shot in Winterset and Adel, along with the actual Roseman and Holliwell covered bridges. Locations were coordinated with the full cooperation of the Iowa Film Commission, Madison County and Adel Chambers of Commerce, and the Madison County Covered Bridge Preservation Society.

The Musical

In February 2014, this romantic and well-known story became a Broadway musical. The production opened at the Gerald Schoenfeld Theater on West 45th Street in the Theater District of Manhattan in New York City. Starring Kelly O'Hara as Francesca Johnson and Steve Pasquale as Robert Kincaid, the production was awarded two Tony Awards based on the musical score developed by Tony Award-winning composer Jason Robert Brown ("Parade," "The Last Five Years").

In March 2015, it was announced that the Broadway musical would launch a national tour beginning in central Iowa. With direction by Tony Award winner Bartlett Sher ("South Pacific," "The Light in the Piazza"), and book by Pulitzer Prize winner Marcia Norman ("The Secret Garden," "The Color Purple"), the tour launched at the Des Moines Civic Center on Nov. 28, 2015. The tour visited 18 cities throughout the United States and concluded July 24, 2016. ♦

Explore the hometown celebrations of Madison County

2025 Winterset Wine Walk | May 10, 1-6 p.m.

Join the Madison County Chamber of Commerce, downtown Winterset merchants, and area wineries for shopping, wine sampling, music and more. Must be 21 years of age or older to participate. Cost is \$27.50 or \$25 by check or cash, which includes a commemorative wine glass, plus \$5 coupon toward the purchase of a bottle of wine (that night only). Register at <https://business.madisoncounty.com/events/details/winterset-wine-walk-2802?calendarMonth=2025-05-01>.

2025 Iowa Quilt Festival | June 4-7

The Iowa Quilt Museum, 68 E. Court Ave., Winterset, hosts this community-wide quilt festival celebrating the history, tradition and artistry of quilting in Iowa. Hundreds of quilts are displayed in dozens of historical and cultural landmarks across the county. This unique event is one that you don't want to miss. The festival now also includes classes, a comprehensive quilt symposium and a retreat, so make sure to check out the activities online at www.iowaquiltmuseum.org.

2025 Levitt AMP concerts, Earlham Sundays, June 1 - Aug. 10, 6-9 p.m.

Visit Earlham to enjoy its Levitt AMP Earlham Music Series. Concerts are held Sunday evenings during the summer at Earlham City Park. Since 2019, the Levitt AMP Earlham Music Series, presented by Earlham Chicks with Checks, an all-female giving circle, has ushered in a dynamic new chapter for this small, family-friendly town of 1,450 people. Through the Levitt AMP grant, Earlham City Park has been transformed by the community into a vibrant, music-filled community hub. The 2025 series will offer a diverse array of high-caliber performances while fostering inclusivity and connectedness in Earlham and throughout the surrounding area. For updates, visit https://exploremadisoncounty.com/events/levitt_music_series/2025-06-01/.

Macksburg National Skillet Throw | June 20-21

This event features a parade Saturday at 10 a.m. and skillet throw Saturday at noon. Friday features hot dogs and hamburgers and practice time for skillet throwing from 6-8:30 p.m. at Macksburg Park. Visit macksburgskilletthrow.com for more information.

2025 Freedom Fest, Earlham | July 4

Celebrate Independence Day in Earlham. Take part in a street dance, a parade, a pancake breakfast, tons of contests (including watermelon-eating and bubble gum-blowing), and fireworks, to name just a few activities. Find more information on Facebook @EarlhamFreedomFestival.

2025 Madison County Fair | July 16-20

Bring the entire family for activities, livestock and pet shows, grandstand events, contests, carnival rides and games, food and more. See details as they develop at madisoncountyfair.net.

2025 John Wayne Birthday Celebration May 23-24

The John Wayne Birthday Celebration 2025 will feature musical headliner Riders In The Sky, 40-year veterans of Nashville's Grand Ole Opry. Tickets are on sale for the Friday Night VIP event and the Saturday Night Benefit Dinner & Auction. Seating will be limited for each event. Barry Corbin, a Hollywood legend, will perform a one-man show on May 23. Also returning will be the popular Fly-In Breakfast at the Winterset Municipal Airport, the Winterset Rotary's 5K Run/Walk, and John Wayne in "Chisum" on the big screen at the Iowa Theater. Visit the John Wayne Birthplace & Museum website for tickets and more information: www.johnwaynebirthplace.museum.



2025 Old Settlers Days, St. Charles | July 18-19

The Old Settlers event celebrates family fun and community involvement. St. Charles is proud of its heritage and traditions so celebrates the many Old Settlers who worked hard to build the community. The event features family entertainment all weekend long, from Cow Pie Bingo to entertainment on the Community Stage. For more information, visit www.scolddsettlers.org.

2025 Hinterland Music Festival | Aug. 1-3

Three days of music curated for all who love both music and the great outdoors. This annual festival features a blend of live music; camping; art, craft and food vendors; family activities and more at the Avenue of the Saints Amphitheater in St. Charles. Headliners are Tyler, The Creator; Kacey Musgraves; and Lana Del Rey. Check out the lineup and updated information at www.hinterlandiowa.com/lineup.

Paint Madison County, A Plein Air Festival | Sept. 21

Join the Madison County Chamber of Commerce as it hosts Paint Madison County, A Plein Air Festival at Covered Bridges Winery, 2207 170th Trail, Winterset. Artists will create in the open air 9 a.m. to 1 p.m., and a reception will follow from 4-7 p.m., hosted at Covered Bridges Winery. Attendees will have the opportunity to purchase participating artists' work.



2025 Madison County Covered Bridge Festival Oct. 11-12

While details for the Madison County Covered Bridge Festival are yet to be finalized, the event will feature its usual highlights, including the parade and tours of the namesake bridges. Vendors, demonstrations, family fun, live entertainment, car show, quilt show, Madison County Historical Complex tours, and much more draw crowds from throughout the area. The parade concludes events on Sunday at 3 p.m. Festival admission is \$3 or two for \$5 and free for children younger than 11. For updated information closer to the event, visit https://exploremadisoncounty.com/covered_bridge_festival/.



Madison County Fall Crawl | Sept. 28

Take a drive with friends around Madison County to see small local businesses in their rural setting. There are a few stops along the crawl that have normal business hours where you can grab a glass of coffee, wine, cider, beer, or a bite to eat. The fall crawl is a free event for the entire family, with lots of fun things to do and more than 60 vendors. For list of participating locations and more information, visit www.madisoncountyfallcrawl.com.

Winterset Festival of Lights | Nov. 28, 5-8 p.m.

Enjoy a holiday experience like none other. At 5 p.m., the entire family can enjoy food and warm beverages, live and lighted window displays, free horse-drawn wagon rides, extended shopping hours, and interactions with Santa, all around the Madison County Courthouse. A lighted parade gets underway at 7:15 p.m., followed by a Christmas tree lighting and the annual showing of "Elf" at the Iowa Theater at 8 p.m. (free with non-perishable food donation).

Small Business Saturday | Nov. 29

Shop small, local businesses and enjoy special holiday festivities throughout the day. Watch for details of the festivities as the date draws nearer at https://exploremadisoncounty.com/events/small_business_saturday/2025-11-29/.

Winter Solstice Market | Dec. 12-13

This two-day indoor shopping experience features curated arts, crafts and food vendors in two locations around the Winterset Courthouse Square: the restored Winterset Livery building, 116 S. First Ave., and the newly renovated Warehouse on 2nd, 213 N. Second Ave. Savor the sights, sounds and scents of the holiday season while shopping for handcrafted items for everyone on your list.

Madison County Chamber Banquet & Annual Meeting | January 2026 date TBA

Join the Madison County Chamber of Commerce membership to celebrate the achievements of 2025 and look ahead to an exciting year in 2026. Visit www.madisoncounty.com for more information as the date nears. ♦

PRO TEAM
= REALTY =

**Pick the right
team for the job!**



ROGER QUECK
641-745-7330



TAMRA YEAGER
515-468-8991

PROTEAMAGENTS.COM

PRO TEAM
= INSURANCE =

LIFE • HOME • AUTO

**Protection
for you and
your family!**

**Call us today
to see how much
we can save you.**

Auto-Owners
INSURANCE
LIFE • HOME • CAR • BUSINESS

515-462-4061

55 E. Jefferson Street, Winterset

www.proteaminsurance.com



Explore the sights and sites of Madison County

Winterset Courthouse Historic District

The nine-block area surrounding the Madison County

Courthouse was added to the National Historic Register in 2014 as the Courthouse Historic District. Of the 104 buildings, 78 are contributing structures to the District due to their historical authenticity. The oldest buildings are from the 1860s, and each building that faces the Courthouse was in place before 1899. Building materials include both limestone and brick, with varying styles of architecture.

The Downtown Façade Rehabilitation Project was completed in 2020 and provided 17 buildings in the Historic District with much-needed repairs. They now exhibit a fresh look and are historically preserved to last many more years into the future.

A self-guided walking tour highlighting interesting buildings is available. Stop by the Madison County Chamber of Commerce to pick up a free booklet.

Courtesy of Madison County Historical Society / Madison County Historic Preservation Commission

Madison County Courthouse

The picturesque Madison County Courthouse, built in 1876 at the then-impressive cost of \$116,087, was designed by French-born architect Alfred H. Piquenard, planner for both the Iowa and Illinois state capitols. His original hand-written drawings and specifications have been preserved.

Madison County's first courthouse was a one-story double log cabin that stood one block east of the current Courthouse Square where Monumental Park is located.

The developing county soon outgrew the log walls, so a two-story stone courthouse was built on the town square in 1868. It looked quite similar to the present courthouse but, unfortunately, burned down due to an undetermined cause in October 1875, without insurance. Although the county's records were saved, the dome collapsed to the basement floor, and the bell melted.

Exterior features: Madison County citizens voted to spend the needed funds to build another courthouse in its place using the original design, but with improvements. The building is in the form of a Greek Cross, embracing the features of the late Renaissance style with four stone porticos and rising columns. Massive doors of walnut and oak greet those who enter from every direction. Native limestone quarried in the county was crafted for the exterior, and local wood was hand-carved to adorn the interior by building superintendent Judge William H. Lewis.

Worried of another fire, the basement ceilings are constructed of brick arches, leveled with concrete and walls of stone block, some of which was reused from the remains of the first stone courthouse. The dome is made of metal and rises 122 feet.

When completed in 1878, it was reported, "The work done is both in material and workmanship of the best kind and the hardware of the best bronze throughout, much finer than any other public building in this part of the west."

At one time, the cupola held a weather vane. After deteriorating

Handcrafted in the heart of Madison County



covered bridges
WINERY

Award-winning wines made from 100% Iowa-grown grapes!



Come sample our wines, try an Iowa craft beer, enjoy live music, take a cooking or art class, or just hang out with friends. Whether you're new to Iowa wine or have an experienced palate, you're sure to find something you'll enjoy.

CoveredBridgesWinery.com
2207 170th Trail, Winterset 515-729-WINE (9463)



Shhhhhh!

THE
SPEAKEASY
WINTERSET, IA

www.TheSpeakeasyWinterset.com

over time, it was replaced with a design crafted by local workmen in 1954.

The four-faced clock has provided the time to Winterset, and the bell in the dome has sounded the hour, since 1878. The bell was removed in 2011 due to weight concerns and is now on display on a limestone base on the northeast corner of the courtyard. A recording of its sound has taken over the hourly duties; plus, those same speakers play music for holidays and special occasions.

Large maple trees grace the lawn, lending shade to many during the summer. Other plantings beautify the courtyard, providing a serene setting and adding to the grandeur of the courthouse. Current events such as the annual Madison County Covered Bridge Festival make the courthouse the centerpiece of their celebration.

Interior features: After climbing the outside portico stairs and opening an original heavy door, you are in the heart of Madison County government. The four corners of the first floor contain the offices of the County Auditor, Recorder, Assessor and Treasurer, along with the Supervisors' Office. Records stored here date back to the first log cabin courthouse. Along the walls of the first floor, you will see tributes to Madison County men and women who served in World War I, World War II, the Korean War, the Vietnam War and Operation Desert Storm. Madison County takes great pride in the names of those listed here. In the center of the Greek cross design is a memorial fountain, pointing out other historic

locations within Madison County.

From the second floor, the public accesses the courtroom, which was remodeled in 1966 with a dropped ceiling as was the style at that time. The carved wood railings and court pews are original to the courtroom. The picture of Abraham Lincoln on the wall also presided in the first stone courthouse.

The courtroom was once more than 22 feet in height and extended into the third floor. The spectators' balcony, plaster ceiling medallions, and ornate columns are still in place. Additional county offices are located on the third floor along with access to the dome; however, no one is allowed to climb the steep stairs due to safety concerns.

Courtesy of Madison County Historical Society / Madison County Historic Preservation Commission





**HAND
CRAFTED
BEERS
TAP
ROOM
OPEN
FRIDAY
SATURDAY
SUNDAY**

**LIVE
MUSIC
FOOD
TRUCKS
& MORE**

Find us on Facebook
and Instagram



**BIG
RACK**
BREW HAUS

2475 HIATT APPLE TRAIL
WINTERSET, IA 50273
515.468.0012
BIGRACKBREWHAUS.COM



**ORDER
NOW!**

SUBWAY

77 Green St., Winterset | 515-462-1978



Oasis
WINE & SPIRITS

53 E. Green St., Winterset | 515-462-4193 | oasiswineandspiritsia.com

ATTRACTIONS

Carver Memorial Park

Located one block east of the Courthouse on Court Avenue

Carver Park was established in 1988. George Washington Carver, renowned agricultural scientist and inventor who developed hundreds of products using peanuts, sweet potatoes and soybeans, spent time in Winterset, and his time in the community has been commemorated with the establishment of Carver Memorial Park.

This quiet and inviting park is located next to the site of the former Shults Hotel, where Carver worked as a cook for a time during the two years he was in Winterset. The "Dream Big Dreams" mural, created by Madison County children, was installed in 2014 to enhance the peaceful atmosphere among the plantings.

Courtesy of Madison County Historical Society / Madison County Historic Preservation Commission

Monumental Park

One block east of the courthouse square, Winterset

After the Civil War ended in April 1865, local citizens organized to raise funds to erect a monument in memory of those who served. The monument that was constructed is the focal point of Monumental Park, established at the site of the county's first



Monumental Park

CRAFTING QUALITY, CONSTRUCTING DREAMS.

We have a reputation of excellence in the construction industry in central Iowa. We have achieved this reputation by strictly following one principle: The customer's satisfaction is our priority.



COMPLETE
CONSTRUCTION

cciowa.com

515-556-8777 | josh@cciowa.com



New Homes • Remodels • Additions • Interior & Exterior

OUR CUSTOMERS LOVE OUR WORK!

"I've worked with Josh on many projects large and small, remodels and new builds. He works relentlessly to go above and beyond expectations, and finishes with an amazing product. First-rate contractor, and I look forward to continuing our business relationship!"

courthouse. Four abandoned Civil War cannons and carriages were later added to the park thanks to the efforts of Col. Henry Johnson Brodhead Cummings, a Madison County Civil War hero, editor of the *Madisonian* newspaper, and legislator in the U.S. House of Representatives. In 1974, the monument's original limestone foundation was repaired, and an 1867 time capsule was found. It contained various coins, a button from a Union uniform, an 1866 business directory and various newspapers, both local and from major U.S. cities. These items are now housed at the Madison County Historical Museum.

Courtesy of Madison County Historical Society / Madison County Historic Preservation Commission

Madison County Freedom Rock

Half block east of John Wayne Drive on Washington Street, Winterset. Dedicated in August 2017.

Madison County Freedom Rock, the 64th completed by artist Ray "Bubba" Sorensen from Greenfield, has four separate tributes painted on it. One honors the Quilts of Valor Foundation, which has its national headquarters in Winterset, with the depiction of a female veteran draped in a quilt. Another pays tribute to Madison County veterans George Stout and Glenn Martin. Stout led the WWII U.S. Army unit devoted to recovering art that had



Madison County Freedom Rock

been plundered by the Nazis. Martin created the Glenn L. Martin Company, where aircraft for the military was designed, including the Martin B-10 bomber. A third tribute is paid to four Madison County young men who were taken prisoners of war: Carl Hircock, Larry Spencer, Eddie Bengel and Don Thomas. The final tribute is to John Wayne, with four likenesses representing his many military movie roles.

Courtesy of Madison County Historical Society / Madison County Historic Preservation Commission



Your Smile

Is our Priority!

Become A Member of Our IN HOUSE MEMBERSHIP PLAN

**NO yearly maximums, deductibles, claim forms, frequencies, pre-authorizations, pre-existing conditions no denial for coverage and NO waiting periods.*

Preventative:

- 1st Visit By Age 1
- Sealants (to Prevent Cavities)
- Oral Hygiene Care

Cosmetic:

- Whitening & Bleaching
- Bonding
- Partials
- Complete Dentures

Restorative:

- Tooth Colored Fillings
- Extractions
- Root Canal Therapy
- Crown & Bridge
- Dental Implants

Revolutionizing Smiles with the Latest in Digital X-Ray and Intraoral Camera Technology!



Visit us online or Call Today for more information!

515.758.2323

110 South Chestnut Ave • Earlham, IA
earlhamfamilydental@gmail.com







www.earlhamfamilydentistry.com We File All Insurance

JACKSON



GARAGE DOORS

SALES • SERVICE • INSTALLATION



GARAGE DOORS

SERVING WINTERSET AND SURROUNDING AREAS




515-314-5490

JacksonGarageDoorSales@gmail.com

LiftMaster

Facebook.com/Jeff-Jackson-Garage-Doors

ATTRACTIONS

Winterset's "Rock City" Cemetery

502 S. Fourth St.

The cemetery's current number of burials exceeds 9,200. Originally, it was known as the Rock City Cemetery based on Winterset's nickname due to the amount of limestone in the area.

The grounds contain an impressive WWI memorial and many unique and beautiful headstones. Veterans are honored with a marker at each grave, and an Avenues of Flags is on display each Memorial Day weekend. It is a peaceful place to walk and reflect. It is open from 8 a.m. until sundown.

It is managed by the Winterset Cemetery Improvement Association. For more information, call the Cemetery at 515-462-1255.

Courtesy of Madison County Historical Society / Madison County Historic Preservation Commission

Madison County Historical Complex

815 S. Second Ave., Winterset

The Madison County Historical Complex, which is owned and managed by the Madison County Historical Society, includes 18 acres and 14 buildings, including the Madison County Museum, which opened to the public during the Covered Bridge Festival in October 1980. The next 10 years saw the donation of the Post

Office, the Bevington Kaser house (a restored 1856 brick Victorian mansion that sits prominently at the top of the hill), the Zion Church, the Gazebo, the addition of the west wing, and the relocation of the train depot from downtown to the complex.

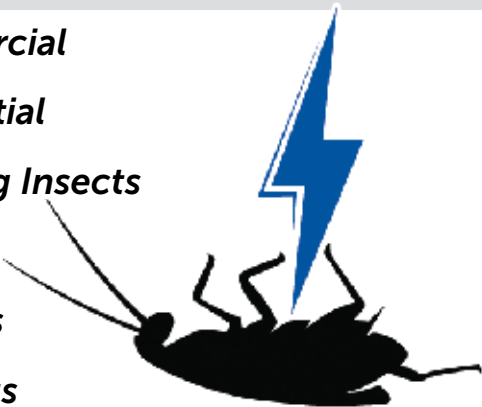
In 1991, the McKee barn was built to house the farm tools and implements in the collection, and the North River School was deeded to the society. Later in that same decade, the Law Office and Martin Gas Station were moved to the complex, and the society established an endowment fund.

In addition to filling the important role of preserving Madison County history for current residents and future generations to learn from, the Madison County Historical Society serves the community through a variety of educational and outreach programs. It also hosts community events such as the Old Fashioned Christmas and reindeer visits and the Fun in the Sun car show. During the annual Covered Bridge Festival, the museum complex often hosts Civil War re-enactors, heritage skill demonstrators like blacksmiths and woodworkers, horse-drawn wagon rides, special displays dedicated to Madison County history and/or the festival's theme, and the Passport to the Past program.

Courtesy of Madison County Historical Society / Madison County Historic Preservation Commission

***We care more about
your pest than you do!***

- Commercial
- Residential
- Crawling Insects
- Rodents
- Termites
- Bed Bugs



**Unmatched customer service,
knowledge & 9 YEARS EXPERIENCE**

712.371.3171

Jaylon@starpestiowa.com

Family Owned & Operated



**LET US SHOW YOU WHAT
A BANK SHOULD BE.**



ASIB American State Bank

What a Bank Should Be!



www.americanstatebank.com • 515-462-5090 • Winterset, IA

**MADISON
COUNTY
WINERY**

*Just a short drive
from Winterset.*



Wood Fired Pizzas on Fridays!

Madison County Winery offers a delicious variety of wines & beers. With a view that overlooks the vineyard, hills and greenery of Iowa, you will love the time you spend with us!

Raise a glass!

Sip and relax indoors or soak up the atmosphere on our spacious outdoor patio! Madison County Winery is buzzing all year long with events and good times!

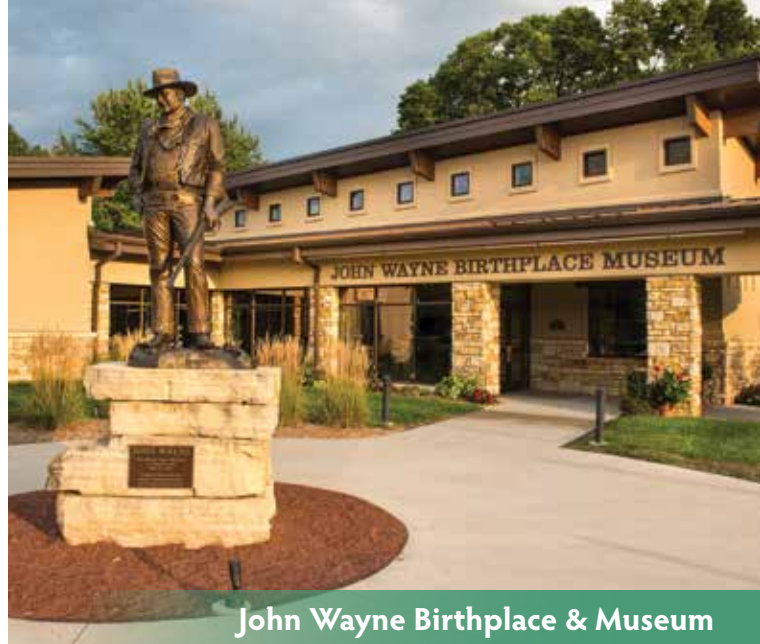
3021 St. Charles Road, St. Charles, IA | 641-396-2220

WWW.MADISONCOUNTYWINERY.COM

John Wayne Birthplace & Museum

205 S. John Wayne Drive, Winterset

Born Marion Robert Morrison in 1907, John Wayne began life in a modest home in Winterset. The home has been restored to its 1907 appearance with period furnishings. A 6,100-square-foot museum was dedicated in 2015 and showcases the life and career of John Wayne. The John Wayne Birthplace & Museum features the largest diversified exhibit of Wayne artifacts in existence, including original movie posters, film wardrobe, scripts, letters, artwork and sculpture, one of his customized automobiles, and a movie theater. The John Wayne Birthplace Trail is a self-guided tour that visits various Madison County locations important to Wayne's life when his family lived in the area. Markers identify each location, and maps are available at the Chamber of Commerce office.



North River Stone Schoolhouse

2053 N. River School St., Winterset

Built in 1874 of native limestone, the school was in continuous use until 1945. It is on the National Register of Historic Places. The school is open only by appointment through the Madison County Historical Society.

Winterset Art Center

224 S. John Wayne Drive, Winterset

The Winterset Art Center, housed in an 1854-era home, features paintings, prints, posters and other artwork by local artists. Check online for available art-related classes and programs, wintersetartcenter.net/classes-events.



**SNOW REMOVAL • HOLIDAY LIGHTS
LAWN MOWING • IRRIGATION
CHEMICAL APPLICATIONS • LEAF CLEANUPS
AND MORE!**

515-468-5034 OFFICE@CDSLAWNCARE.COM



Clark Tower

The Delicious Apple

Jesse Hiatt was a farmer who discovered an unusual seedling in his apple orchard in 1872. He carefully nurtured the tree and found its first fruit to be of a remarkable flavor. Originally named Hiatt's "Hawkeye," the apple was entered in the Missouri State Fair in 1893. Upon biting into the apple, one judge proclaimed it "delicious," and that name stuck. A descendant of the original Delicious apple tree still stands just north of Peru.

Clark Tower

Situated in Winterset City Park (along with the Cutler-Donahoe Bridge), Clark Tower was erected in 1926 as a memorial to one of the county's first pioneer families by its descendants. Constructed of native limestone, it stands 25 feet high and offers a commanding view of the Middle River valley below.

George Stout Story Book

This scenic byway grant-funded public art piece by Michael Goodall is located in Winterset along the Covered Bridges Scenic Byway on the corner of Washington Street and First Avenue as a tribute to Winterset native George Stout. Stout was an American art conservation specialist and museum director who founded the first laboratory in the United States to study art conservation, as well as the first journal on the subject of art conservation. Because of his art conservation background, he was one of the first recruited to the Monuments, Fine Arts, and Archives section. The group was charged with the protection of, and documentation of, damages to European cultural monuments during World War II, as well as the investigation, location, recovery and repatriation of art that had been plundered by the Nazis.



Iowa Quilt Museum

Iowa Quilt Museum

68 E. Court Ave., Winterset

The Iowa Quilt Museum opened its doors to the public on May 21, 2016. Located on the south side of the town square in historic Winterset, this unique museum occupies a storefront that was, for many years, a JCPenney local branch. The museum offers changing exhibits — three to four per year — of American quilts both vintage and new. The Iowa Quilt Museum welcomes quilters, quilt lovers, history buffs and all appreciators of American art and culture.

Bricker-Price Block

The Bricker-Price Block in Earlham was built in 1900 by C.D. Bricker and W. Price and underwent a historic transformation and renovation in 2017. The building is listed on the National Register of Historic Places as a building worthy of preservation, and, in 2018, the Bricker-Price Block once again welcomed the community inside, as a social center and cornerstone of civic pride, expanding educational, cultural and recreational opportunities in Madison County through restoration and development.

Avenue of the Saints Amphitheater and Event Center

3357 Saint Charles Road, St. Charles

A variety of indoor and outdoor events are hosted at this venue, including concerts, sports races, motorcycle rallies, weddings and camp-out events. ♦

Schedule a tour today!

Contact Us at 515-462-1711

email: wintersetinfo@azriahealth.com

www.azriahealth.com/winterset



AZRIA HEALTH
WINTERSET



Rehabilitation Therapy, Long Term Care, Specialized Care Programs

**PROVIDING EXCELLENCE
AT EVERY LEVEL,
PROVIDING
EXCEPTIONAL SERVICE
TO EACH INDIVIDUAL.**

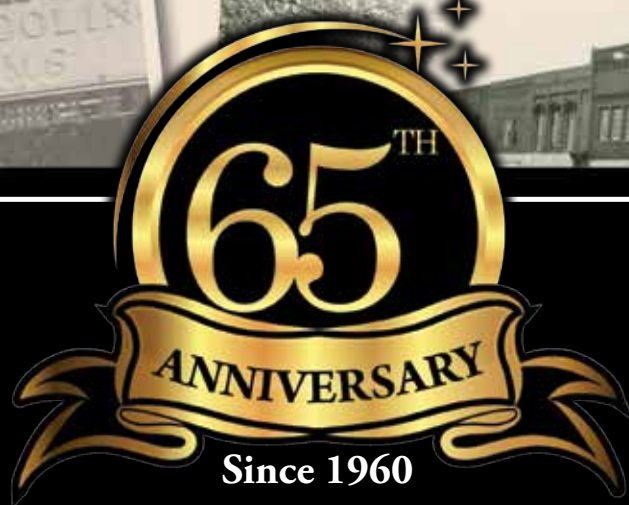
“I have lived here for several years, and restorative therapy is great, I always fun with friends. Lauren and Fran in activities are A1. Everyone here is A1, my brother is always impressed with the level of care here. It is just a great atmosphere, everyone is always happy.”
— Shirley B.



1015 W. SUMMIT STREET,
WINTERSET

**Inquire for open positions
FT and PT are available!**





Celebrating another year of success,
we are proud to be one of central Iowa's most
dependable family-owned businesses.
Our commitment to providing reliable
service continues to strengthen our
reputation as a trusted leader in the
communities we serve. We thank you for your
loyalty and support, and we look forward to
many more years of excellence together.

*- Your friends and neighbors at
Adel Winterset TV & Appliance*

Heating & Cooling Sales and Service
Appliances • Electronics • Beds • Grills & Smokers

The logo for Adel & Winterset features the company name in a large, stylized blue font. To the right of the name is a red circular seal with the text 'Est. 1960' in white. Below the company name, the text 'T.V. & APPLIANCE • HEATING & COOLING' is written in a smaller, bold, sans-serif font.

**ADEL
& Winterset**
T.V. & APPLIANCE • HEATING & COOLING

916 Main Street, Adel
515-993-4287
Mon-Fri 8-5, Saturday 8-1

www.adelwintersettv.com

224 Highway 92, Winterset
515-462-2939
Mon-Fri 9-5, Saturday 9-2