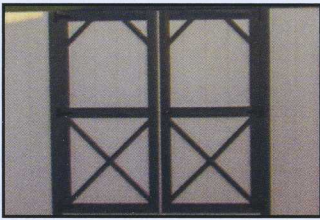
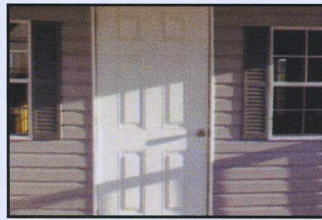


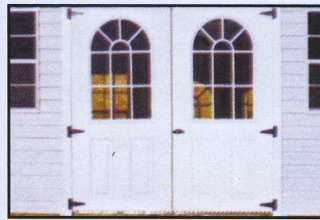
OPTIONS



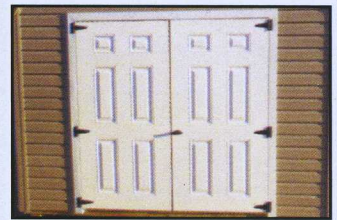
Added Standard Doors \$275



3' Fiberglass Pre-Hung Door \$300
9-Lite Glass Door \$380



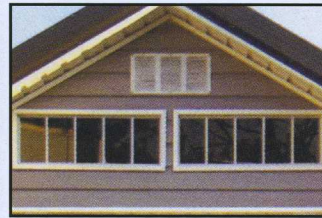
Fiberglass Door with Glass
1 door = \$200 | 2 doors =
\$400 (Add glass on vinyl
buildings = \$100 per door)



Fiberglass Door - 1 door
= \$150 | 2 doors = \$300
(Standard on vinyl buildings)



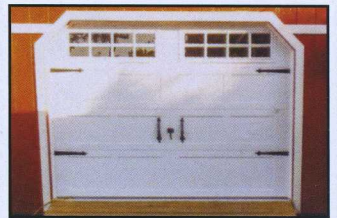
2'x3' Insulated Window \$240
3'x3' Insulated Window \$260



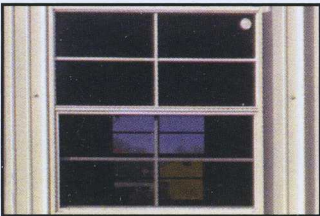
Transom Window \$70



Roll Up Doors 6'x7' \$375
8'x7' \$400 | 9'x7' \$425



9'x7' Carriage House Door \$750
9'x7' Overhead Door \$450



3'x3' Window \$90
2'x3' Window \$80



Ramps 4'=\$125 | 6'=\$150
8'=\$200 | 9'=\$250



Shutters \$35/pair



Flower Boxes \$40 each

WE CAN COLOR MATCH ANY COLOR ... 10% UPCHARGE



Loft Ladder \$80



Vinyl Railings on Cabins \$795
Colors: White, Pebblestone Clay
Wood Railings on Cabins \$250



Arched Gable Window \$95



Sunsky Ridge \$6 per linear ft.

WE CAN ADD ANY OF YOUR CUSTOM OPTIONS

Site Preparation:

A solid and level foundation is vital so the doors of your new shed will operate properly.

- ◆ We recommend 4"-6" of crushed rock (limestone) for the base.
- ◆ Pad should be one foot bigger than building size.
- ◆ Rake out gravel as close to level as possible.
- ◆ Compact the pad by using a compactor or vehicle, etc. Rake the pad level again, filling in any low spots.
- ◆ Next put a level on a long, straight 2x4 and check crossways and lengthways of the pad for level, filling in any areas to bring everything level. You may want to compact and level more than once, depending how much fill was brought in.
- ◆ Slope pad slightly towards biggest door.

Remember, how nicely your new shed sits depends on how well you've leveled the pad!!

Red Maple Sales is not responsible for problems resulting from improper pad preparation. Professional pad installation is available for an added charge. Call for a price quote.