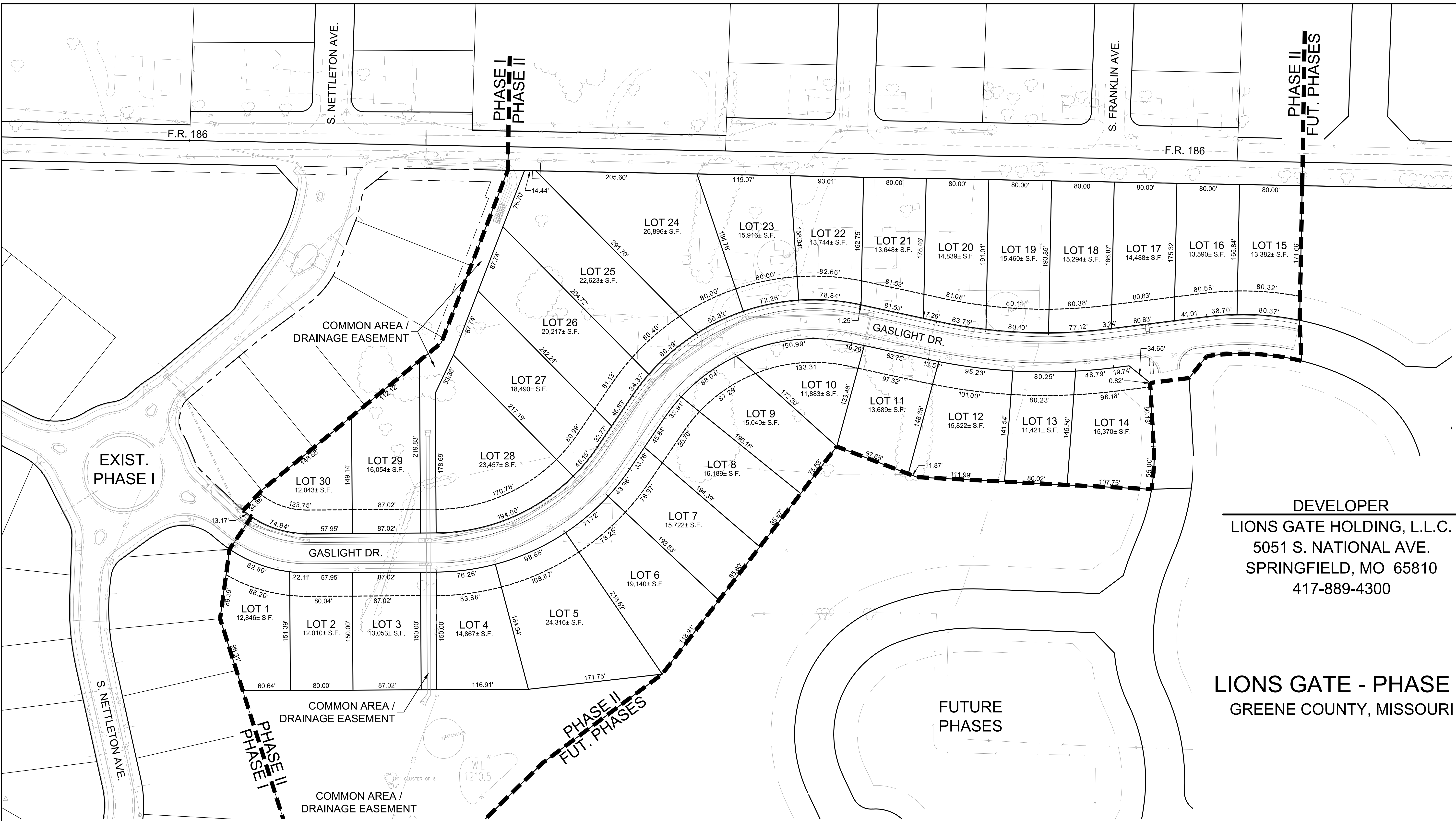


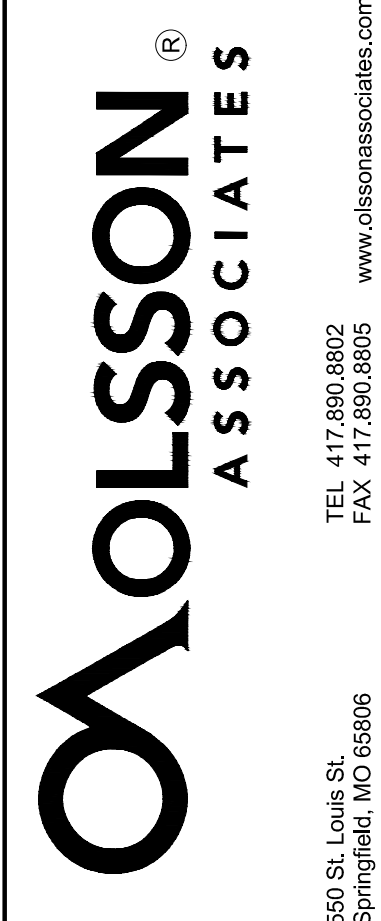
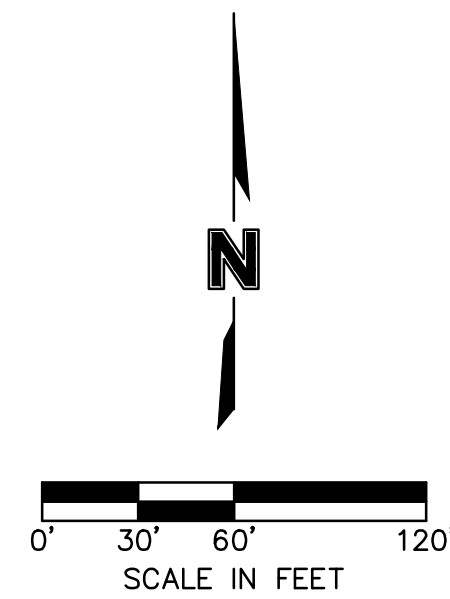
DWG: F:\PROJECTS\015-2169\40-Design\AutoCAD\Exhibits\2018-06-13-LIONS GATE PH22 - MRKT EXH.dwg  
 DATE: Jun 14, 2018 5:18pm  
 USER: mchodwick  
 v-topo\_52169  
 c:\base-others\_52169  
 c:\pilot-ph2\_3-4\_52169  
 c:\base-ph2\_52169



**NOTE:**  
 THIS DRAWING IS NOT A SURVEY AND IS FOR MARKETING PURPOSES ONLY. IT IS ONLY INTENDED TO SHOW THE GENERAL DIMENSIONS OF LOTS. USERS ARE ADVISED TO REVIEW THE RECORDED FINAL PLAT FOR DETAILED LOT DIMENSIONS, EASEMENTS, BUILDING SETBACKS AND TO REVIEW THE RESTRICTIVE COVENANTS FOR OTHER REQUIREMENTS.

**DEVELOPER**  
**LIONS GATE HOLDING, L.L.C.**  
 5051 S. NATIONAL AVE.  
 SPRINGFIELD, MO 65810  
 417-889-4300

**LIONS GATE - PHASE II**  
 GREENE COUNTY, MISSOURI



REV. NO.	DATE	REVISIONS DESCRIPTION

MARKETNG LAYOUT  
 LIONS GATE - PHASE II  
 GREENE COUNTY, MISSOURI  
 2018  
 SHEET 1 of 1

drawn by: MVC  
 checked by: JLR  
 approved by: JLR  
 QA/QC by: RVL  
 project no.: 015-2169  
 drawing no.:  
 date: 06.14.18

