



RUNWAY CENTRE SELECT TN CERTIFIED SITE -26 ACRES FAYETTEVILLE, TENNESSEE

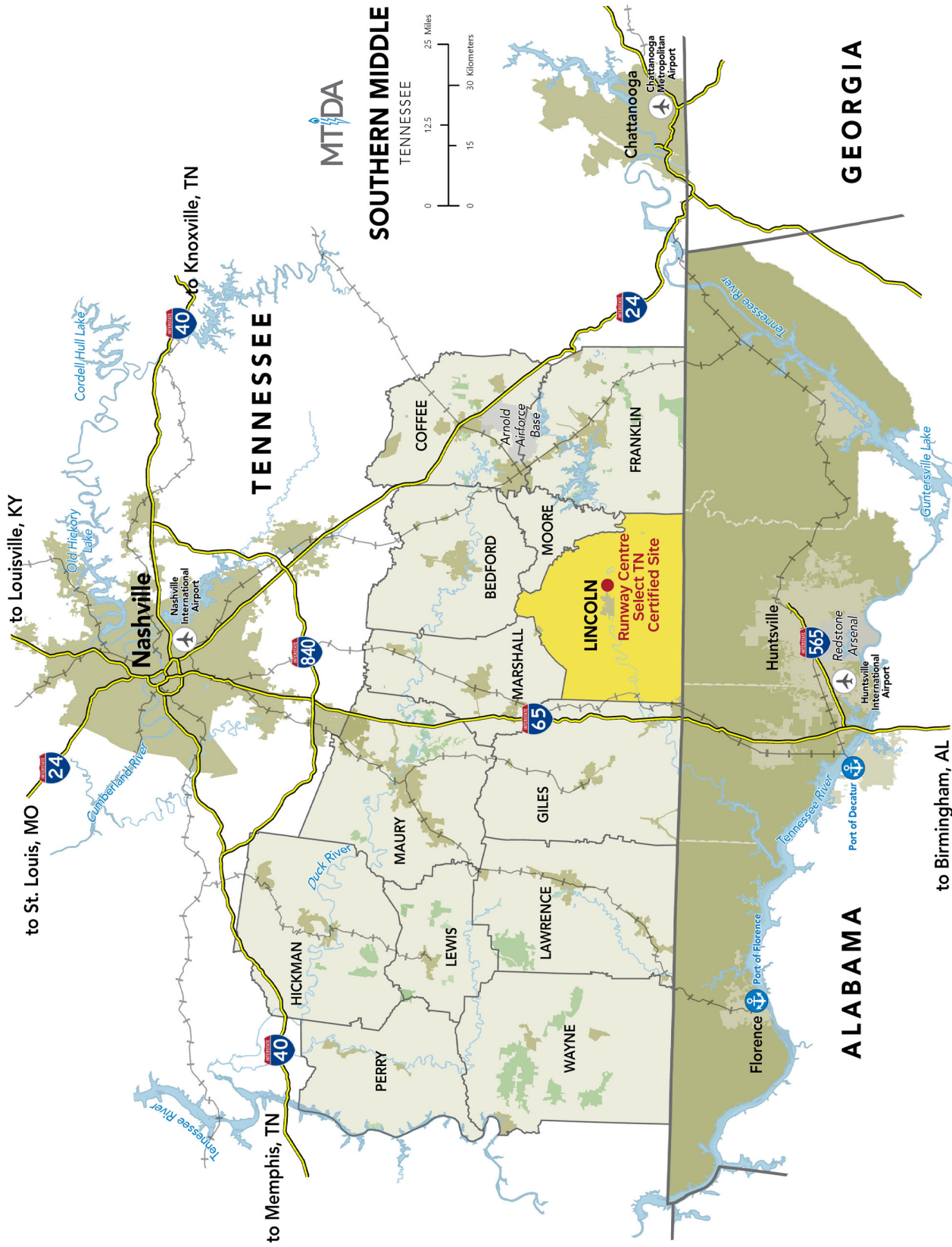


**FAYETTEVILLE
LINCOLN COUNTY**
INDUSTRIAL DEVELOPMENT BOARD

COMMUNITY LOCATION

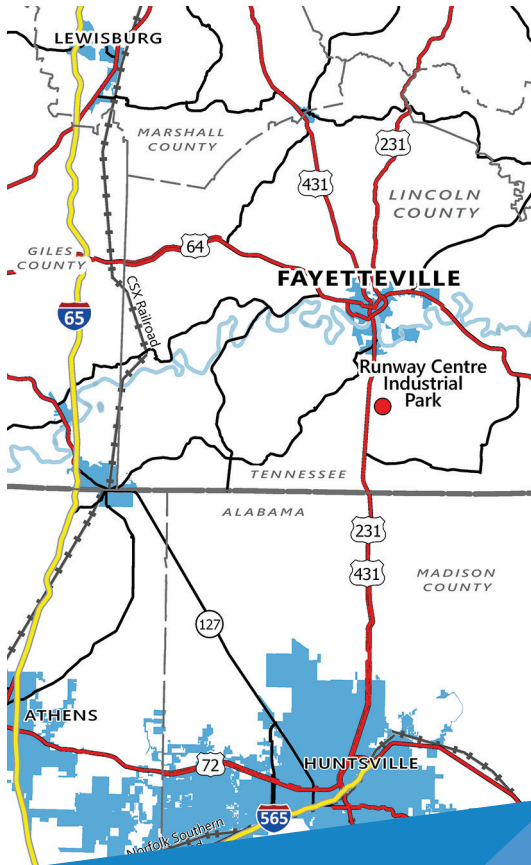


REGIONAL MAP



COMMUNITY OVERVIEW

Lincoln County, Tennessee, with its seat in the charming town of Fayetteville, sits at the center of the economically diverse Tennessee River Valley. The county's main thoroughfare, US Highway 64, is four lanes wide, and Fayetteville is at the center of the connector between I-24 and I-65. With its dynamic location, picturesque setting, relaxed lifestyle, motivated workforce and superb business climate, Fayetteville and Lincoln County are ideally suited to growing enterprises large and small.



CONTACT

Elaine Middleton
 Director
 Fayetteville-Lincoln County
 Industrial Development Board
 16 Franke Boulevard
 Fayetteville, TN 37334
 931-433-0607
 elaine@flcidb.com

TRANSPORTATION

- Located at 2800 Huntsville Highway
- 32 miles to Interstate 65; 45 miles to Interstate 24
- Nashville International Airport (BNA) - 86 miles
- Huntsville International Airport (HSV) - 45 miles
- Fayetteville Municipal Airport (FYM) - 5,900 ft. runway
- Tennessee River access Port of Decatur, Alabama - 46 miles

LOCATION

- County: Lincoln
- Miles from three metropolitan areas:
- Nashville, TN - 82 miles
 - Chattanooga, TN - 96 miles
 - Huntsville, AL - 25 miles

WORKFORCE

- 17.3% of residents - Bachelors degree or higher
- 15,940 available workers
- Available labor: 30 minutes: 25,581; 45 minutes: 121,468; 60 minutes: 302,402
- Motlow State Community College
- 35 miles to Martin Methodist College and two Tennessee College of Applied Technology
- Industrial Maintenance Program
- Highly educated in mainly aerospace and science fields resulting from Arnold Engineering Development Complex (AEDC) and U.S. Army Redstone Arsenal in Huntsville, Alabama

LIVABILITY

- Five federal and state highways that intersect within and throughout the city
- Fayetteville/Lincoln County residents and businesses enjoy some of the lowest utility rates in the nation
- Fayetteville's cost of living index is 87
- Per capita income of \$37,279
- Quality schools with 38.5% of the students meeting the ACT Scores
- 38% of Lincoln County school teachers have a Master's degree or higher

PROPERTY SPECIFICATIONS

26.47 +/- acres are available for development in this park which would be ideal for advanced manufacturing operations. Located a short distance north of Redstone Arsenal in Huntsville, Alabama, a hub for the aviation, aerospace, and defense industries, this park is well suited for a number of highly-skilled and high-value companies. A 200,000-square foot pad is currently under construction on this site by the Fayetteville- Lincoln County Industrial Development Board. For more information please visit:

www.tvasites.com/InSite3-local/insite3-local-rida.aspx?details=4878&Local=MTIDA

LAND INFORMATION

Site Size (acres):	26 +/-
Developable Area (acres):	26 +/-
Additional Acres Available for Development:	No
Certified Site:	Yes
Divisible:	No
Business/Industrial Park:	Yes
Previous Use:	Agriculture
Zoned:	Industrial

PRICING INFORMATION

For Sale:	Yes
For Lease:	No
Sale Price:	\$25,000 per acre
Land Lease Rate:	Not to be leased

UTILITY INFORMATION

Electric Service to Property:	Yes
Electric Provider:	Fayetteville Public Utilities
Electric Voltage:	161 kV
Gas Service to Property:	Yes
Gas Provider:	Fayetteville Public Utilities
Size of Gas Main:	4 inch
Gas Main Pressure:	30 PSI
Fiber Optics:	Yes
Telecom Service to Property:	Yes
Telecom Provider:	AT&T, Comcast, FPU, Birch, Charter & Mediacom
Water On Site:	Yes
Water Provider:	Lincoln County Board of Public Utilities
Water Main Size:	10 inch
Sewer on Site:	Yes
Sewer Provider:	Lincoln County Board of Public Utilities
Sewer Main Size:	8 inch

PROPERTY SPECIFICATIONS

GEOGRAPHIC INFORMATION

Address:	2800 Huntsville Highway Fayetteville, TN 37334
Latitude:	35.064875
Longitude:	-86.568328
Topography:	Level
Wetlands:	No
Flood Plain:	No
Phase 1 ESA:	Yes
Geotechnical Report:	Yes
Foreign Trade Zone:	No
New Market Tax Credit Qualified Census Tracts:	No
Tax Increment Financing Area:	No
Airport Zone:	Yes

Rail Access:	No
Parcel ID:	Map 126 Parcel 041.16
Highway Name:	U.S. Highway 231
Distance to Highway:	Less than 1/4 of a mile
Interstate Name:	Interstate 65
Distance to Interstate:	25 miles
Major Commercial Airport:	Huntsville International Airport
Distance to Airport :	36 miles
Local Airport:	Fayetteville Municipal Airport
Distance to Airport :	Less than 1/4 of a mile
Port Name:	Port of Decatur, Alabama
Distance to Port:	46 miles



VIEW AN AERIAL VIDEO OF THIS SELECT TENNESSEE CERTIFIED SITE AT
https://www.youtube.com/watch?v=TeJaSzDgcA0&feature=emb_logo

SITE MAP

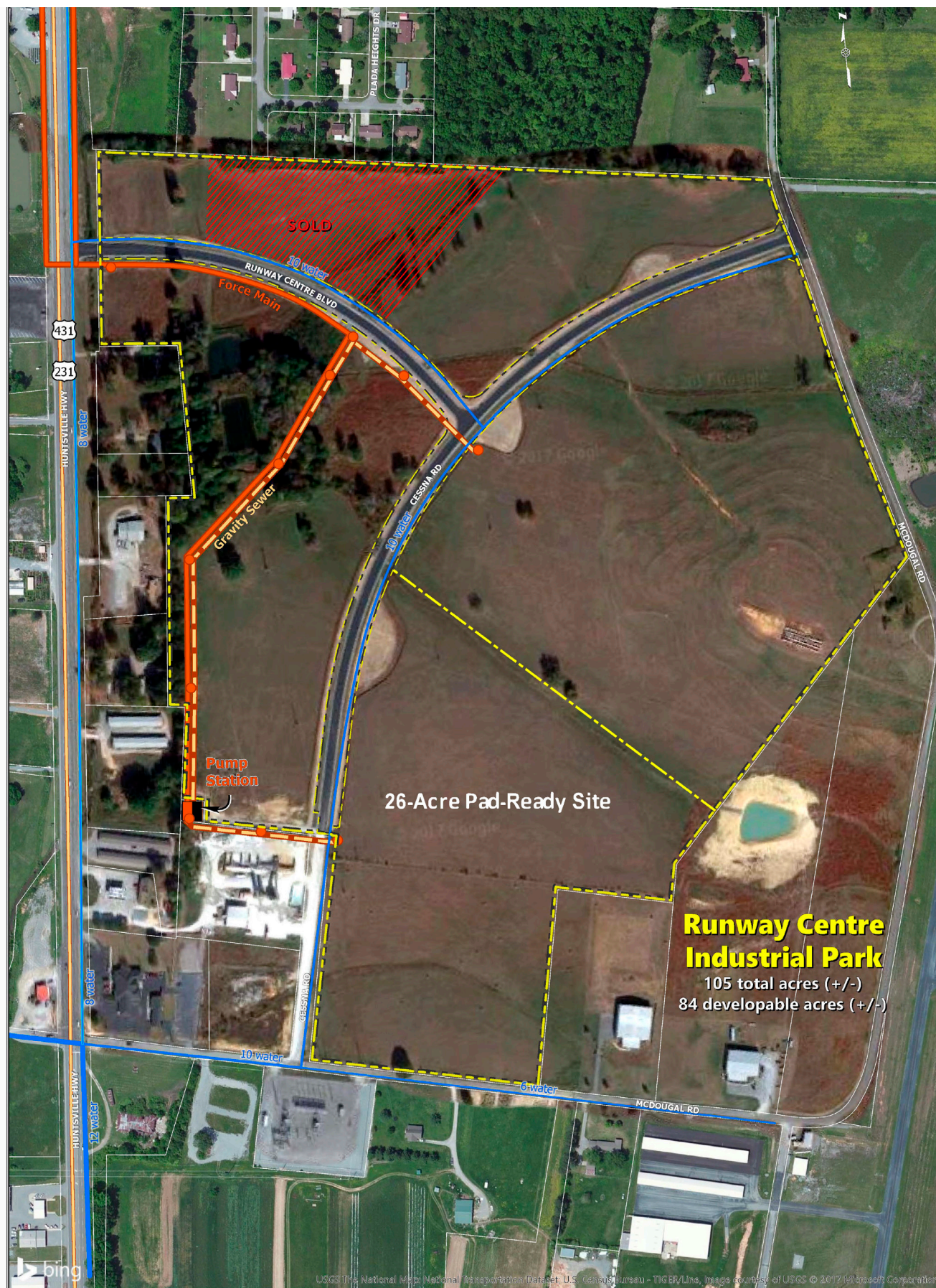


ELECTRIC AND GAS UTILITY MAP



	Fayetteville Public Utilities Runway Centre	Legend ● Pole ■ Substation — Electric Conductor 46KV — Fiber Optic Cable — Gas Main	 N W E S	Created By: J.W. Brown Mapping & Data/GIS Coordinator Date: 6/6/2019	

WATER AND SEWER UTILITY MAP



Runway Centre Industrial Park
Fayetteville, Tennessee

Fayetteville Public Utilities

● Sewer Manhole Gravity Sewer Main

Lincoln County Board of Public Utilities

8" & 6" Water Mains

This map is intended for preliminary planning purposes only.
Source: USGS The National Map; National Transportation Dataset, Microsoft-Bing and Google imagery sources, USGS, and parcel data provided by the State of Tennessee. Sewer utility information and locations provided by Fayetteville Public Utilities (FPU), FPU.

Prepared by the Middle Tennessee Industrial Development Association, March 2017.

Contact Information:

Elaine Middleton

Director

Fayetteville-Lincoln County Industrial
Development Board
16 Franke Boulevard
Fayetteville, TN 37334
(931) 433-0607
elaine@flcidb.com

Britt Dye

CEO/General Manager

Fayetteville Public Utilities
P.O. Box 120
408 West College Street
Fayetteville, TN 37334-0120
(931) 433-1522
bdye@fpu-tn.com

Prepared by:



2021

Robert T. (Bob) Bibb

Executive Director

MTIDA
2108 Westwood Avenue
Nashville, TN 37212
(615) 269-5233
rtbibb@mtida.org