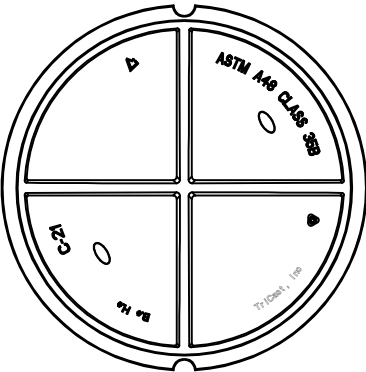
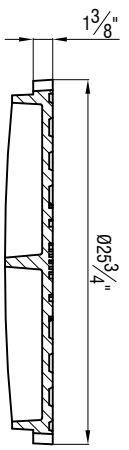


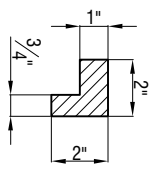
LETTERING 1 1/2" MIN. TALL RAISED 1/4" MARK WITH "SEWER" FOR SANITARY SYSTEMS OR "STORM" FOR STORM DRAINAGE SYSTEMS



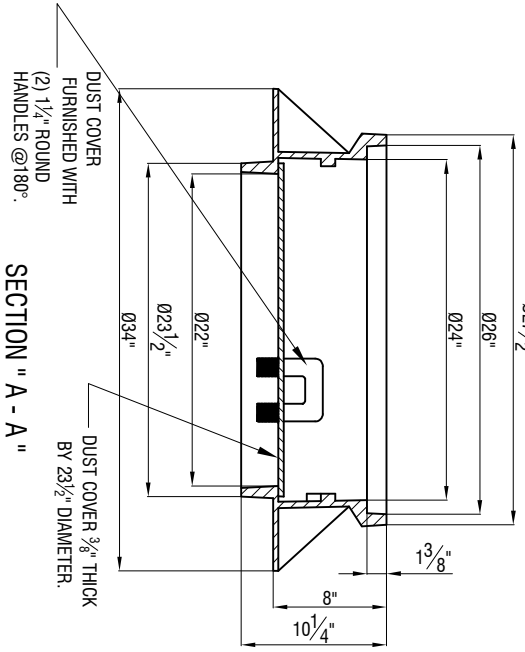
BACK VIEW OF COVER



SECTION " A - A "



DETAILS OF STOP LUGS (2)



SECTION " A - A "

TriCast, Inc P.O. BOX 943 SELMA, NC 27576 PH: (919) 936-2629 FAX: (919) 936-0520 EMAIL: tricast-inc@hotmail.com	
ITEM: HAMPTON ROADS SEWER FRAME, COVER AND DUST COVER	PART # MS - MHC 21Y
MATERIAL SPEC: GREY IRON ASTM A48 CLASS 35B	
LOAD RATING: HEAVY DUTY - HS - 20	

- NOTES:-**
1. ALL CASTING DIMENSIONS SHALL HAVE A TOLERANCES OF $\pm 1/8"$
 2. ALL CASTINGS SHALL BE CLEANED SHOT BLASTING AND HAND CHIPPING UTILIZING STANDARD INDUSTRY PRACTICES PRIOR TO SHOP APPLICATION OF ASPHALTIC COATING, BY DIPPING