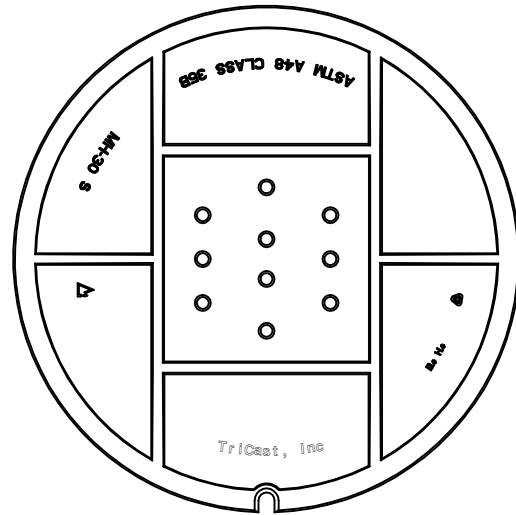
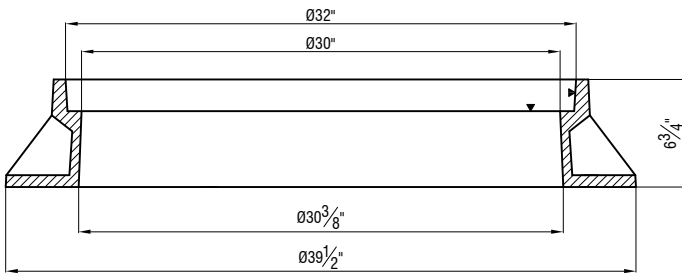


SECTION " A - A "



BACK VIEW OF COVER



SECTION " A - A "

NOTE:-

1. LARGE LETTERS IN CENTER OF COVER SHALL BE SEWER OR AS SPECIFIED IN ORDER
2. CASTING AND COVER IS TO BE MACHINED TO INSURE A FIRM TIGHT FIT.

<p>TriCast, Inc P.O. BOX 943 SELMA, NC 27576 PH: (919) 936-2629 FAX: (919) 936-0520 EMAIL: tricast-inc@hotmail.com</p>
<p>ITEM: 30" STANDARD MANHOLE FRAME & COVER "SEWER"</p>
<p>PART # MS MH - 30 S</p>
<p>MATERIAL SPEC: GREY IRON ASTM A48 CLASS 35B</p>
<p>LOAD RATING: HEAVY DUTY - HS - 20</p>