

CITY OF KIEL LEAF COLLECTION IS **OCTOBER 5-NOVEMBER 16**

LEAF COLLECTION DOS AND DON'TS



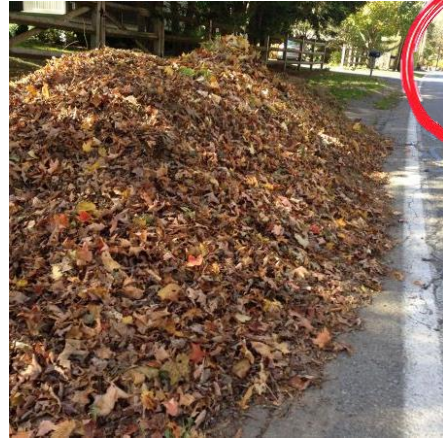
DO place leaves in the gutter.



DON'T place leaves on the terrace.



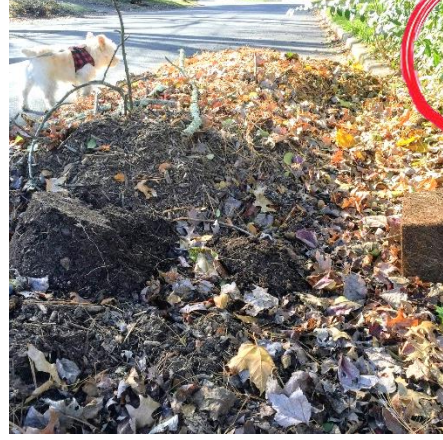
DO rake into long, narrow rows.



DON'T rake into large, compact piles.



DO include leaves and light mulches.



DON'T include sticks, grass clippings, etc.*

DEADLINE FOR LEAVES TO BE PUT OUT FOR PICK-UP IS NOVEMBER 15.

*Leaves mixed with sticks, branches, grass clippings, garden waste, or dog feces **will NOT be accepted**. Please dispose of them in an appropriate manner.

