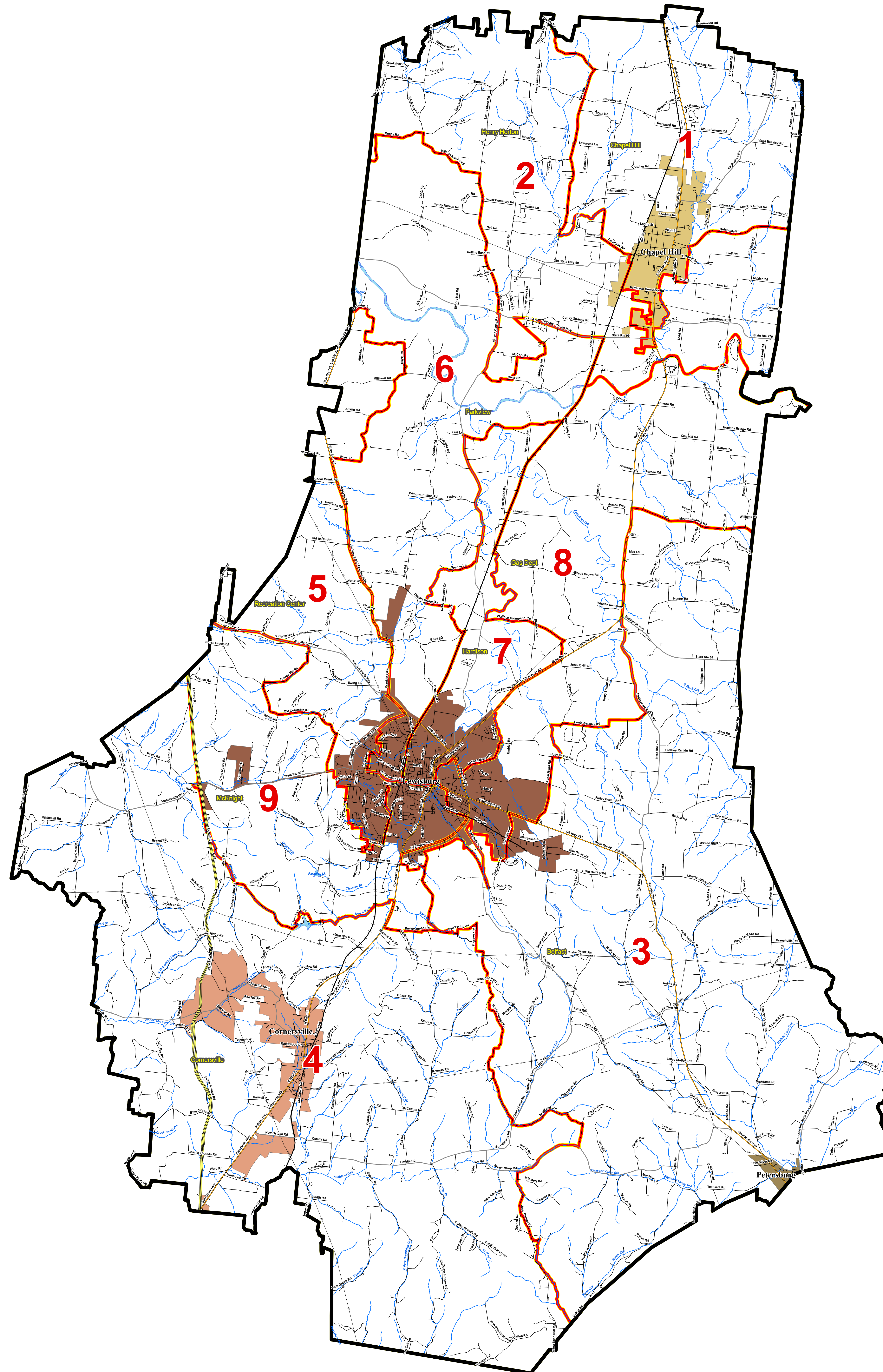
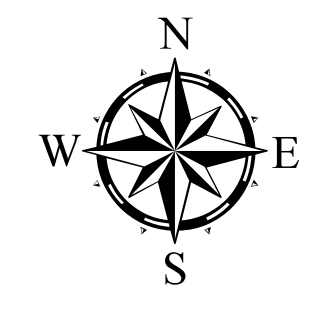


## Current County Commission Districts and Voting Precincts



- Interstates
- U.S. Highway
- State Highway
- Local Roads
- Railroads
- Creeks / Stream
- Powerline
- County Commission Districts
- Voting Precinct
- Lakes / Rivers
- City, Town**
- Chapel Hill
- Cornersville
- Lewisburg
- Petersburg
- 1 County Commission District Number
- 1234 Precinct ID Number



2020 Total Population 34,318

2010 Population by District  
Overall Range [4.3- (-4.1)] = 8.4%  
Optimum Population is 3,813 per District

DISTRICT	NUMCOMS	TOTALPOP	DEVIATION	%DEVIATION	WPOP	%WHITE	BLPOP	%BLACK	OTHERPOP	%OTHERPOP	HSPOP	%HISPANIC
1	2	3,722	-61	-2.4%	3,275	96.7%	109	2.7%	247	6.6%	103	4.4%
2	2	3,854	41	1.1%	3,468	90.2%	72	1.9%	214	5.1%	166	4.2%
3	2	3,656	-107	-4.1%	3,275	89.6%	100	2.7%	281	7.7%	118	3.2%
4	2	3,715	-100	-3.8%	3,417	92.0%	61	1.6%	236	6.3%	113	3.1%
5	2	3,894	-119	-3.1%	3,000	81.2%	289	7.3%	425	11.5%	315	8.0%
6	2	3,884	71	1.8%	3,079	79.3%	272	7.0%	533	13.7%	349	8.6%
7	2	3,977	164	4.3%	2,841	86.4%	661	16.6%	675	17.1%	474	11.9%
8	2	3,880	80	2.1%	3,148	90.2%	257	6.6%	480	12.5%	308	7.6%
9	2	3,825	112	2.9%	3,301	84.1%	251	6.4%	373	9.5%	229	5.9%

### 2020 Population by Precinct

VOTING PRECINCT	TOTALPOP	TOTALPOP18
Bullard	3,650	2,890
Chapel Hill	3,722	2,795
Cornersville	3,713	2,901
Clay Craft	3,883	3,046
Hudson	3,877	2,943
Henry Hester	3,884	2,872
McKnight	3,925	3,054
Petersburg	3,884	2,885
Recreation Center	3,694	2,983



Cordell Hull Building  
425 Rep. John Lewis Way N | Nashville, Tennessee 37243-1402  
P: 615.401.7773 | F: 615.532.5279

*Precincts may change after the publication of this map.  
Contact the Division of Property Assessments at 615.401.7773  
or visit [apps.cot.in.gov/dpamaps/redistrict/counties](http://apps.cot.in.gov/dpamaps/redistrict/counties)  
for current information.*

Created on: 12/21/2021